

New Urbanisms New Citizens

Issue 2

June 2010

Field research underway

Fieldwork began in January 2010 after several months of preparation. The local community has been extremely receptive to the field researcher, Dr. Sophie Hadfield-Hill. The Head of the local primary school has been an invaluable asset, allowing Sophie to undertake six weeks of ethnographic classroom observations, prior to starting the interviews. Sophie was involved in taking sixty Year 5 and 6 pupils on a tour of their local area and was involved in activities during their sustainability week. Two local secondary schools have also been helpful in assisting us with contacting other young people living on the development. Sophie is now recognised by both young people and adults when walking around the community, a great success. The majority of the interviews have now been conducted and the focus groups are now underway.



Local primary school

Team excursions

In addition to the fieldwork being well underway, the team have also been on several trips to give them a broader understanding into various issues related to the project.



Risk taking at the urban skate park

In addition to the involvement with the local community, a number of regional stakeholder interviews have been conducted. The aim being to gain an overview of the growth agenda and the impact on young people living within the Milton Keynes South Midlands region. Local stakeholders have also been contacted to add a further dimension to the research.

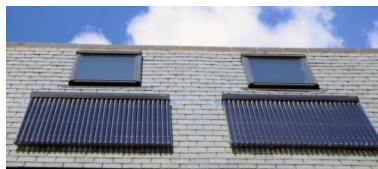
GPS technology

The GPS element of the research is on the horizon. To assist the team with the use of the technology and the analysis of the collected data, we are delighted to have received the support of Dr. Clare Jarvis, Senior Lecturer in Geographical Information and Dr. Jen Dickie, Research Associate, both at the University of Leicester. We welcome them to the team and look forward to working on this element of the research with them.

SHINE research

Dr. Peter Kraftl and Dr. John Horton assisted with the data collection for the 'Sustainable Home Innovation Network' (SHINE) project with Dr. Janet Jackson, The University of Northampton. This involved conducting research with children from our case study community regarding their environmental behaviours and practices. Involvement in this research complements the

'sustainability' aspect of the New Urbanisms, New Citizens project.



Eco features of the development

Conference

In September 2010 the team are hosting two conference sessions at the Royal Geographical Society (with Institute of British Geographers) International conference. The two sessions are entitled, 'Spaces designed with/for/by children, young people and families and 'Children, young people and 'sustainability.' Both sessions are sponsored by the Geographies of Children, Youth and Families Research Group. Details of these sessions will be published in future newsletters.

Visiting researcher

Associate Professor Karen Malone, from the University of Wollongong, NSW, Australia (UNESCO Asia Pacific Director, Growing Up In Cities) will be visiting the research team in June 2010. During her visit she will be involved in research discussions and we will discuss ideas for future collaboration. She has an international reputation regarding the study of children growing up in cities, specifically she focuses on children and young people's participation in planning and developing their neighbourhoods.

The team visited an indoor urban skate park in Northamptonshire, frequently cited as an example of good practice in youth provision.

The team was also taken on a guided tour around Northamptonshire by David Lancaster, Northamptonshire Police Crime Prevention Design Manager. The trip specifically focused on spaces for young people, areas that work well in practice and those that do not. The case study communities were also visited and observed from a crime and design perspective.

In the coming months the team also plans to visit BedZED, the UK's

largest mixed use sustainable community, the Thames Gateway growth area and Poundbury, Dorset, to enhance our understanding of sustainable communities.

The next stage

Over the coming months, interviews and guided tours will be continued in the first case study community. The team is excited about the GPS element of the project which is due to begin in June 2010.

Research will also begin in the other case study communities, in preparation for September, when the second part of the GPS study will take place.

Points of interest:

- Field research is underway
- The team welcomes new members
- Team members collaborate on the SHINE research project
- Conference sessions organised for an International conference

Contact details:

For general enquiries, please contact:

Professor Pia Christensen (PI)
Institute of Education
University of Warwick
Coventry, CV4 7AL.
Tel: 02476 523938
Email:
P.H.Christensen@warwick.ac.uk