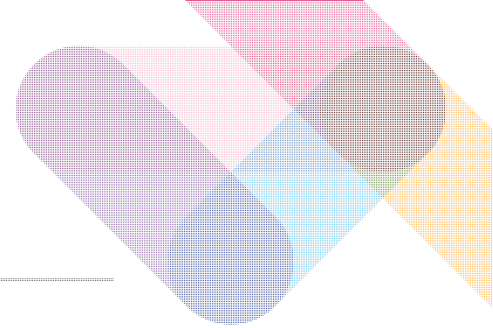


STUDENT-STAFF LIAISON COMMITTEE ANNUAL REPORT



The SSLC Annual Report is used in a variety of ways including:

- Helping the incoming SSLC as a handover document
- Informing the SU & University on how to improve Academic Reps as a whole (findings are published in August and available on the SU Website)
- Helping develop new resources & solutions to better support Course Reps
- Informing the SU & University on how better to raise non-departmental issues to the right places
- Finding similar issues that are being raised across departments and working with the University to develop solutions (findings are published in August and available on the SU Website)
- Promoting the successes within SSLCs during Term 1 and including examples in the SSLC Handbooks to help the next generation of Course Reps

It is the responsibility of the Chair to ensure that a SSLC Annual Report is completed, in consultation with student and staff members of the Committee by the deadline, even if the Committee has not had its last meeting of the year by that date.

Please send this report to sslc@warwicksu.com

Submission Deadline for 2020/2021: 12th July – 1pm

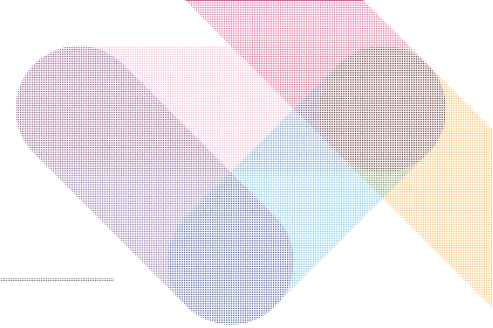
1. Your Student-Staff Liaison Committee	
What is the name of your SSLC? (i.e. Chemistry)	Economics MRes/PhD GSSLC
Which courses are covered by this SSLC? (please include course codes which can be obtained by your Academic Convenor)	MRes/PhD Economics

Which levels are represented by your SSLC? <i>(Delete as applicable)</i>
Undergraduate / Postgraduate Taught / Postgraduate Research

2. Membership 2019/2020		
	Name	
Chair	Andrea Guerrieri D'Amati	<i>n.b. the Chair <u>must</u> be a student</i>
Secretary	Andrea Guerrieri D'Amati	<i>n.b. the Secretary <u>must</u> be a student</i>
Academic Convenor	Pablo Beker	

Number of staff members	6
Number of student members	8

Please indicate who, out of the following, attended SSLC meetings this year:		
	Invited to attend? <i>(Delete as applicable)</i>	Attended at least one SSLC?
SU representative	Yes / No	Yes / No
Subject Librarian	Yes / No	Yes / No
Careers Advisor	Yes / No	Yes / No
Technical and Learning Support	Yes / No	Yes / No
<i>Please indicate here if there were any other attendees:</i>		
<i>Additional comments:</i>		

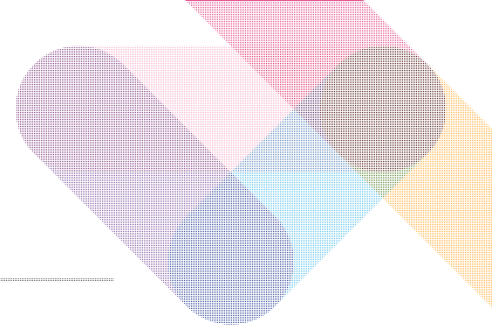


3. Meetings	
How many times has the SSLC met during this academic year? <i>(If there were fewer than four, please indicate why)</i>	5
Did the meetings feel student-led? If no, please indicate why	Yes
Were all minutes from meetings submitted to all members? If not, why?	Yes
4. Your year as representatives	
Please list your SSLC's achievements and other positives that have come out from this academic year	<ul style="list-style-type: none"> Online teaching has been improved after consultations with the SSLC Solved problems related to the organization of Pre-sessional math, EC9A2 and EC9A3 due to the pandemic
Are there any unresolved issues or ongoing matters discussed this year in need of follow up or continuation into the next year's SSLC? What steps are being taken to ensure this? (A copy of this report, containing detail of unresolved issues, will be made available to the SSLC next year, so please do ensure you include all detail of unresolved issues so that they can be followed-up)	No
Are there things that fall outside of the departments control which were discussed as issues at SSLC?	No

5. Communication

Which of the following methods have been used to gather material for meetings? If used, please can you rate them according to effectiveness from 1 to 5 (5 being very effective, 1 being not effective at all).

Please delete as applicable:		Score
SSLC notice board	Yes / No	
Social media	Yes / No	
Surveys	Yes / No	
Moodle	Yes / No	



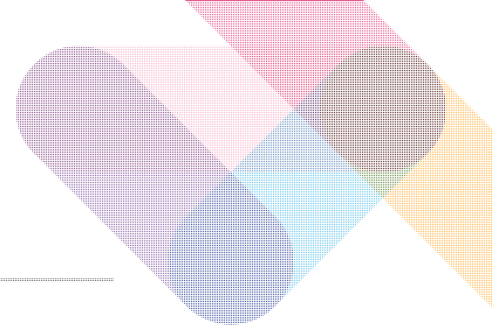
What methods of communication did you find to be the most effective? What didn't work?	University-wide emails were useful but did not produce much interest. On the other hand, emails from the Department (e.g. from Maryanne or Lucia) were highly valuable.
What other ways did you effectively communicate with students?	Mostly internal group chats.
Were you provided access to your department's communication channels? (i.e. having emails send out, departmental noticeboards)	Not directly, but programme managers were very useful in spreading information.
How did you feedback the successes of the SSLC to your cohort?	Mostly internal group chats.
How well do you feel students engaged with your work as course representatives?	Pretty well: before every meeting we asked around for issues to be raised and often received many replies.
What, if any, communications support from the SU would have helped you better represent your peers?	Probably some more induction meetings to raise awareness of the role of the SU and SSLCs in general.

5. Students' Union

Do you feel that the SU has effectively communicated with your Course Rep?	Not really.
How could the SU improve the communication with Course Reps?	Probably some more induction meetings to raise awareness of the role of the SU and SSLCs in general.
What events/activities would you like the SU to put on for Course Reps?	More social events, hopefully in person.
How do you think the SU can help better raise issues that cannot be solved in SSLCs?	
Did all of your Course Reps attend SU Training this year?	Yes
Are there any skills that you needed that was not covered in training?	
How do you feel about the new Course Rep Moodle? Explain your answer	
Do you feel supported as an SSLC by the SU Education Team (Academic Voice Policy Consultant/Supervisor & Academic Voice Coordinator)? Explain your answer.	Not really, but luckily enough there have not been any situations that would require their participation.
Do you feel connected to wider SU Representatives? (e.g. Faculty Reps, Education Officer, Postgraduate Officer) Explain your answer.	Not really, but that could be because the SU is more focused on UG students rather than PG ones.
Any other comments about the SU	

6. The Future of Blended Learning (The opinions of the whole SSLC)

When full physical teaching resumes, would you restart physical SSLCs completely, take a blended approach, or have them all online? Why?	For the MRes part, teaching should resume physically.
What areas/things/projects/initiatives would you like to keep from digital learning after physical teaching fully resumes?	
What areas/things/projects/initiatives would you like to keep from digital assessments after physical teaching fully resumes?	



What areas/things/projects/initiatives would you like to see improved by digital technology that wasn't done well or at all during 2020/21	More IT training for professors
7. Follow-up from last year's SSLC Annual Report	
Were you able to obtain a copy of the previous year's SSLC annual report?	Yes / No
Did you manage to address any of your predecessor's unresolved issues?	Yes/ No
Are there any continuing issues from last year that still need resolving?	Yes /No

8. Data Presented to SSLC by Academic Convenor

Did the SSLC receive the External Examiners' report for the course(s) represented by the SSLC? Yes/~~No~~

If no, why not?

Did the SSLC receive NSS Scores and/or module feedback data for the course(s) represented by the SSLC? Yes/~~No~~

If no, why not?