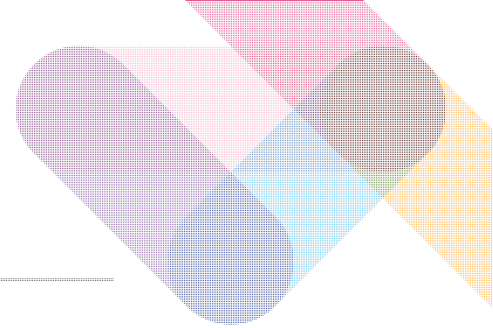


# STUDENT-STAFF LIAISON COMMITTEE ANNUAL REPORT



The SSLC Annual Report is used in a variety of ways including:

- Helping the incoming SSLC as a handover document
- Informing the SU & University on how to improve Academic Reps as a whole (findings are published in August and available on the SU Website)
- Helping develop new resources & solutions to better support Course Reps
- Informing the SU & University on how better to raise non-departmental issues to the right places
- Finding similar issues that are being raised across departments and working with the University to develop solutions (findings are published in August and available on the SU Website)
- Promoting the successes within SSLCs during Term 1 and including examples in the SSLC Handbooks to help the next generation of Course Reps

It is the responsibility of the Chair to ensure that a SSLC Annual Report is completed, in consultation with student and staff members of the Committee by the deadline, even if the Committee has not had its last meeting of the year by that date.

Please send this report to [ssl@warwicksu.com](mailto:ssl@warwicksu.com)

Submission Deadline for 2021/2022: 31<sup>st</sup> July 2022

## 1. Your Student-Staff Liaison Committee

What is the name of your SSLC? (i.e. Chemistry)	Economics MRes/PhD GSSLC
Which courses are covered by this SSLC? (please include course codes which can be obtained by your Academic Convenor)	MRes/PhD Economics

Which levels are represented by your SSLC? <i>(Delete as applicable)</i>
Undergraduate / Postgraduate Taught / Postgraduate Research

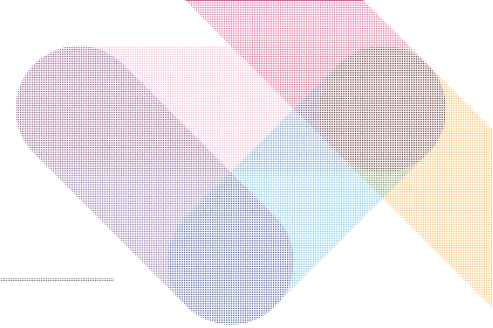
## 2. Membership 2019/2020

	Name	
Chair	Andrea Guerrieri D'Amati	<i>n.b. the Chair <u>must</u> be a student</i>
Secretary	Adam Di Lizia	<i>n.b. the Secretary <u>must</u> be a student</i>
Academic Convenor	Pablo Beker	

Number of staff members	6
Number of student members	8

Please indicate who, out of the following, attended SSLC meetings this year:

	Invited to attend? <i>(Delete as applicable)</i>	Attended at least one SSLC?
SU representative	Yes/ <del>No</del>	Yes/ <del>No</del>
Subject Librarian	Yes/ <del>No</del>	Yes/ <del>No</del>
Careers Advisor	<del>Yes</del> /No	<del>Yes</del> /No
Technical and Learning Support	<del>Yes</del> /No	<del>Yes</del> /No
<i>Please indicate here if there were any other attendees:</i>	Representative from the Doctoral College	
<i>Additional comments:</i>		



### 3. Meetings

How many times has the SSLC met during this academic year? <i>(If there were fewer than four, please indicate why)</i>	5
Did the meetings feel student-led? If no, please indicate why	Yes
Were all minutes from meetings submitted to all members? If not, why?	Yes

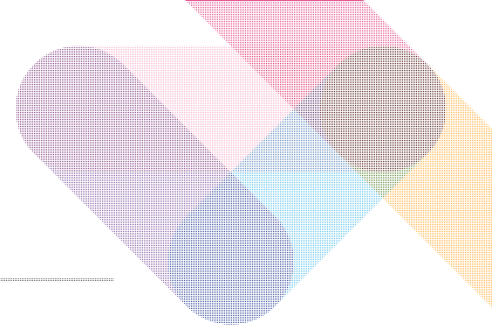
### 4. Your year as representatives

<b>Please list your SSLC's achievements and other positives that have come out from this academic year</b>	<ul style="list-style-type: none"> <li>• Increased discussion and awareness of disabilities in the Department</li> <li>• Increased room coordination</li> <li>• Increased clarity in marking/teaching assignments</li> </ul>
<b>Are there any unresolved issues or ongoing matters discussed this year in need of follow up or continuation into the next year's SSLC? What steps are being taken to ensure this?</b> (A copy of this report, containing detail of unresolved issues, will be made available to the SSLC next year, so please do ensure you include all detail of unresolved issues so that they can be followed-up)	<ul style="list-style-type: none"> <li>• Increasing support for students with disabilities</li> </ul>
<b>Are there things that fall outside of the departments control which were discussed as issues at SSLC?</b>	<ul style="list-style-type: none"> <li>• Issues with marking pay (although this will be more relevant for central uni rather than Department)</li> <li>• Increasing central support for students with disabilities</li> </ul>

### 5. Communication

Which of the following methods have been used to gather material for meetings? If used, please can you rate them according to effectiveness from 1 to 5 (5 being very effective, 1 being not effective at all).

Please delete as applicable:		Score
SSLC notice board	NA	
Social media	NA	
Surveys	NA	
Moodle	NA	



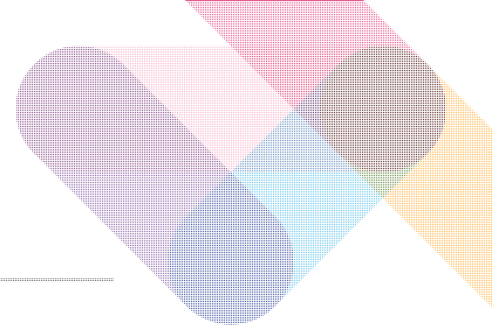
What methods of communication did you find to be the most effective? What didn't work?	University-wide emails were useful but did not produce much interest. On the other hand, emails from the Department (e.g. from Lucia/Natalie/Chen) were highly valuable.
What other ways did you effectively communicate with students?	Mostly internal group chats.
Were you provided access to your department's communication channels? (i.e. having emails send out, departmental noticeboards)	Not directly, but programme managers were very useful in spreading information.
How did you feedback the successes of the SSLC to your cohort?	Mostly internal group chats.
How well do you feel students engaged with your work as course representatives?	Pretty well: before every meeting we asked around for issues to be raised and often received many replies.
What, if any, communications support from the SU would have helped you better represent your peers?	Probably some more mid-term meetings to raise awareness of the role of the SU and SSLCs in general.

## 5. Students' Union

Do you feel that the SU has effectively communicated with your Course Rep?	Not really.
How could the SU improve the communication with Course Reps?	Maybe with some more communications and engagement from SU reps.
What events/activities would you like the SU to put on for Course Reps?	
How do you think the SU can help better raise issues that cannot be solved in SSLCs?	Interact more with the Doctoral College and PGR boards.
Did all of your Course Reps attend SU Training this year?	Yes.
Are there any skills that you needed that was not covered in training?	
How do you feel about the new Course Rep Moodle? Explain your answer	We were not aware of any Course Rep Moodle.
Do you feel supported as an SSLC by the SU Education Team (Academic Voice Policy Consultant/Supervisor & Academic Voice Coordinator)? Explain your answer.	No. We felt there was a lack of communication and engagement from SU reps.
Do you feel connected to wider SU Representatives? (e.g. Faculty Reps, Education Officer, Postgraduate Officer) Explain your answer.	No. Same as above.
Any other comments about the SU	

## 6. The Future of Blended Learning (The opinions of the whole SSLC)

When full physical teaching resumes, would you restart physical SSLCs completely, take a blended approach, or have them all online? Why?	
What areas/things/projects/initiatives would you like to keep from digital learning after physical teaching fully resumes?	
What areas/things/projects/initiatives would you like to keep from digital assessments after physical teaching fully resumes?	



What areas/things/projects/initiatives would you like to see improved by digital technology that wasn't done well or at all during 2020/21	
<b>7. Follow-up from last year's SSLC Annual Report</b>	
Were you able to obtain a copy of the previous year's SSLC annual report?	Yes.
Did you manage to address any of your predecessor's unresolved issues?	There were no unresolved issues.
Are there any continuing issues from last year that still need resolving?	Yes/No

## 8. Data Presented to SSLC by Academic Convenor

Did the SSLC receive the External Examiners' report for the course(s) represented by the SSLC?

If no, why not?

Yes.

Did the SSLC receive NSS Scores and/or module feedback data for the course(s) represented by the SSLC?

If no, why not?

Yes.