

A photograph of three people walking on a paved path in a garden. On the left is a man in a black jacket and blue jeans. In the middle is a woman in a purple hoodie and black pants. On the right is a woman in a grey blazer and black skirt. They are all smiling and looking towards each other. The background features green grass, trees, and a black fence.

MSc Welcome & Introduction

Professor Thijs van Rens

Director of Graduate Studies (Taught Degrees)

16 September 2024

WARWICK

ECONOMICS

This presentation

- Introductions
- Introductory Maths and Statistics
- MSc programmes
- Course structure and module choices
- Assessment, feedback and exams
- Supporting you
- Beyond study

This session is being recorded and will be made available to watch online at any time

The slides have also been uploaded on our induction [website](#)

Introductions



- Professor Thijs van Rens
- Director of Graduate Studies (Taught Degrees)
- S2.105
- J.M.van-Rens@warwick.ac.uk
- Teaching
- Research interests

Introductions



**Professor Ben
Lockwood**
Head of
Department



Dr Claudia Rei
Deputy HoD
(Teaching &
Learning)



**Dr Alex Karalis
Isaac**
Deputy Director
of Graduate
Studies



**Dr Mahnaz
Nazneen**
PGT Senior
Tutor



Inga Turner
Student Support
and Progression
Officer

Introductions – Postgraduate Office



Tina Jones

Programmes
Manager PGT



Andrea Wyld

Programmes
Coordinator
(MSc)



Chau Ho

Programmes
Coordinator
(MRes)



**Marion
Nicholson**

Programmes
Administrator

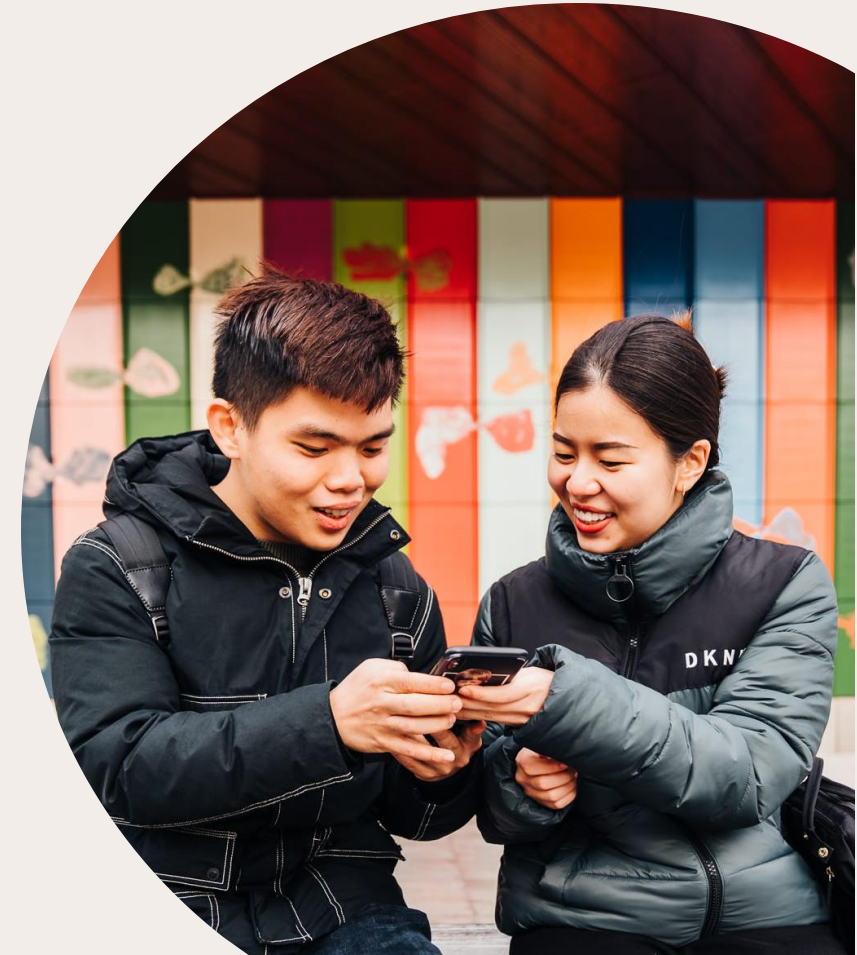


Katie Murley

Student
Engagement &
Experience
Coordinator

How to contact us

- Email economics.pgoffice@warwick.ac.uk or visit the Postgraduate Office in room S1.132
- Visit our [Get in Touch page](#) for frequently asked questions
- When writing emails, please use professional language and academic titles where appropriate
- Allow sufficient time for a reply and avoid making last minute requests
- Please don't send the same message to different email addresses as this duplicates work and causes confusion.





WARWICK

ECONOMICS

Economics in Numbers



We ranked

1st

in the Good University
Guide 2024



We ranked

2nd

in the UK in the most
recent Research
Excellence Framework
(REF) 2021



View more
key statistics



We focus on:



Delivering **outstanding teaching and learning** that benefits society



Delivering **innovative research** that extends the frontiers of the discipline



Producing **policy-relevant research** that enhances wellbeing



Building a **diverse and inclusive community** in which all staff and students can reach their full potential



Creating an environment based on **respect, integrity and accountability** for one's actions

Things to do during induction

- Look at the [induction timetable](#)
- Read the [induction checklist](#) for guidance on the key things to do in your first few weeks
- Check out our [MSc web pages](#)
- Look at [My.Warwick](#)
- Spend some time reading the [MSc Student Handbook](#)



Welcome week

- Welcome week runs from 23 September – 29 September and is a programme of events and activities to help settle in and adapt to life at Warwick.
- Although the week is primarily aimed at students not taking a pre-sessional course, you are very welcome to sign up for events during the weekends and in your free time next week.
- Further details are given at: [Welcome Week | University of Warwick](#)

Introductory Maths & Statistics

- [EC961 Moodle resources](#)
- **Lectures** take place in this room from 2.00-5.00pm today and then from 10.00am-1.00pm tomorrow
- **Classes** will start from 2.00pm-5.00pm tomorrow
- Your allocated class will be published in [Tabula](#) at 5.00pm this afternoon



Introductory Maths & Statistics

- There will be online multiple-choice (MCQ) tests in Moodle
- **Test 1** on Monday 23 September (12.00-1.00pm)
- Optional **second attempt for Test 1** on Monday 30 September (12.00-1.00pm). We will use your highest mark.
- **Test 2** on Wednesday 2 October (9.00-12.00pm)

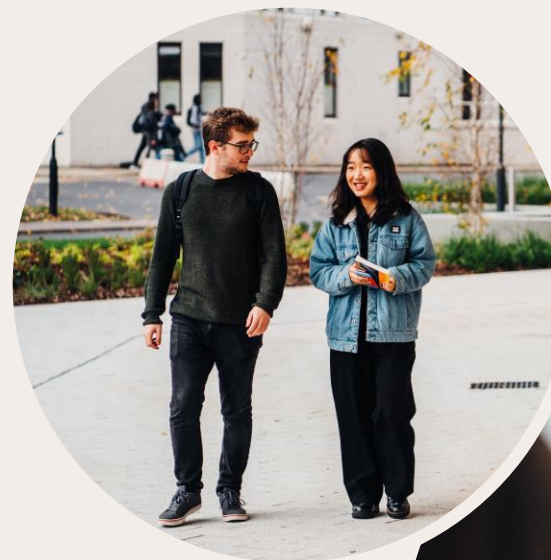
Test weighting in the Econometrics modules		
Course	Test 1	Test 2
MSc Economics	4%	8%
MSc EIFE	4%	8%
MSc BES	8%	12%

Introductory Maths & Statistics

- If you are eligible for **extra time** for tests/exams due to reasonable adjustments, please register with [Disability Services](#)
- This will officially enable us to give you the required extra time.
- Please also let the **Postgraduate Office** know so they can arrange with IT to give you extra time for the online tests (economics.pgoffice@warwick.ac.uk).

Your MSc Programmes

- MSc Economics
- MSc Economics and International Financial Economics
- MSc Behavioural and Economic Science (Economics Track)



WARWICK

ECONOMICS

Overview of the year

Autumn Term

Focusing on core modules

- Microeconomics
- Macroeconomics (Econ/EIFE)
or Psychology modules (BES)
- Econometrics (continues in Spring - Econ/EIFE)

Spring Term

Applying skills and exploring deeper ideas

- Research Methods (Econ/EIFE)
- Optional modules

Summer Term

Developing the skills needed to carry out original research in economics

- Dissertation (Econ/EIFE)
 - Submission deadline 10 Sept 2025
 - Proposal 23 June 2025
 - Proposed title and supervisor: 7 April 2025
 - Start thinking about a topic: Now!
- Project (BES)
 - Submission by end of August 2025

Teaching and Learning

- Research-led teaching
- The year will go by very fast!
- Moodle will be used to allow for personalised teaching, shared use of resources and interactive learning
- Many modules have a sign-up resource to help you form study groups
- 15 CATS module means 150 hours of study consisting of contact hours and independent study

Delivery of Teaching and Learning and exams

- Teaching will be in-person via weekly lectures and weekly/bi-weekly **Support and Feedback classes**
- **Your exams will be in-person**

Course structure: MSc Econ & MSc EIFE

	Pre-term	Term 1	Term 2	Term 3 & Summer
Required Optional core		EC901 Microeconomics A or EC9D3 Microeconomics B 30 CATS		
Required Optional core		EC9D4 Macroeconomics A or EC9D5 Macroeconomics A 30 CATS		
Required Optional core	Pre-sessional Maths and Stats	EC902 Quantitative Methods: Econometrics A or EC910 Quantitative Methods: Econometrics B 45 CATS		
Options			Three optional modules (list varies between courses) 15 CATS each	
Research			Research Methods	EC959 Dissertation 30 CATS

Course structure: MSc BES (Econ Track)

	Pre-term	Term 1	Term 2	Term 3 & Summer
Optional core		EC901/EC9D3 Microeconomics A or B 30 CATS		
Optional core	Pre-sessional Maths and Stats	EC907/EC987 Quantitative Methods: Econometrics A or B 30 CATS		
Core		PS922 Issues in Psychological Science 15 CATS		
Core		PS923 Methods and Analysis in Behavioural Science 15 CATS		
Options			Four optional modules from the course list 15 CATS each	
Research				PS916 Research Project 30 CATS

Optional Core Modules

- Register for **Micro A and Macro A** if you have studied typical undergraduate modules in Micro/Macro
- Take **Micro B and Macro B** if:
 - You have a first-class undergraduate degree
 - You have strong Maths ability ($\geq 60\%$ on EC961 Test 2)
 - You have strong analytical skills or intend to do a PhD
- AB/BA combinations should not be taken without good grounds (such as previous very asymmetric training/experience in macro and micro)



Optional Core Modules

- **Econometrics A** covers fundamental econometrics research skills. **Econometrics B** will supplement the development of these key professional skills by looking at more advanced topics.
- Take Econometrics B if you are familiar with (or are prepared to fill in any gaps on your own):
 - t and F tests of linear restrictions;
 - Heteroskedasticity and Serial correlation;
 - Estimation – in the presence of above problems;
 - Dummy variables;
 - Exogeneity vs Endogeneity.

Optional Modules

- See [Handbook](#) and the [MSc webpage](#) for available options
- **Provisionally** choose **three** from your list (differs between variants). MSc BES choose **four** modules.
- Then, you must register your provisional option choices with University via [eMR](#). The system opens on 25 September.
- Follow the onscreen instructions and see the registration [guidance](#)
- Deadline: Monday 14 October
- Module choices automatically update on Tabula

WBS Modules

- For MSc Econ, MSc EIFE: one IB-coded WBS module can be chosen:
 - IB9X7 Derivative Securities
 - IB9Y2 Behavioural Finance (also available to MSc BES)
 - IB9Y4 International Financial Management
- You must register for one of these WBS modules on eMR if you are interested
- BUT: numbers on these are capped, random selection used in the case of excess demand! If you are selected, you can't then change your mind.

WBS Modules

- WBS modules are challenging technical courses
- EC modules 62% average mark – WBS 54%
- To take these modules, you must have a strong mathematics and statistics/econometrics ability, and have studied relevant topics at UG level e.g. Asset Pricing/ Corporate Finance
- If you have done little maths or stats/econometrics before your MSc, please avoid these modules
- If, by Monday 14 October, you realise you have struggled in Maths/Stats or the Term 1 core modules, do not sign up for these modules

Further module information

- Attend the Presentation of Options meeting to hear from those teaching Economics modules on Friday 4 October
- Information on MSc BES optional modules in Psychology and WBS can be found in the [module catalogue](#)
- The PG Office can make changes on eMR for you during first three weeks of the Spring Term (apart from IB-coded modules)
- It is possible that an option might not run due to low numbers.
- EC991 Topics in Applied Microeconomics and EC979 Health Economics are not running in 24/25.

Assessments

- Modules are assessed by a mix of methods in the form of formal examinations and coursework, including:
 - Problem Sets
 - Essays
 - Modelling and Data Analysis
 - Class Presentations
 - Research Projects



Feedback

Coursework

- Marks returned within 20 days with written individual feedback
- Generic feedback is given for larger modules, including a CDF showing the mark distribution

Exams

- Marks released in February and June
- Generic exam feedback after September resits
- Those resitting will see their exam script (some exceptions)

Other feedback sources

- Problem set solutions
- Support and Feedback classes
- Advice and Feedback hours
- Revision classes

Marking and Exam Schemes

Marking criteria

- The pass mark for modules is 50%
- The mean mark for our core modules is typically around 62%
- To obtain a mark of 70%, your work needs to be very good
- Although we do use the full marking scale of 0% to 100%, in practice marks of above 80% are quite rare (<10%, typically).

Exam Schemes

- You need to pass at least 150 CATS, including all required core modules, and achieve at least 40% in any failed module(s)
- Progression to dissertation is not automatic: it depends on the number of failed exams

Degree classification

- Degree classification is based on your weighted award average
 - $\geq 70.0\%$ Distinction
 - 60.0-69.9% Merit
 - 50.0-59.9% Pass
 - ≤ 49.9 Fail
- This marking scale is typical for the UK, but might be unexpected for anyone who has studied abroad. Please become familiar with it.

Attendance

- You are expected to attend **all** your lectures and classes
- We want to be sure that you are coping with your work and not falling behind
- We ask that you meet fifteen [Monitoring Points](#)
- You will be contacted should we become concerned about your missed Monitoring Points or class attendance record
- You can submit a maximum of 2 absence per year because of short-term illness using the [self-certify sickness form](#)
- Email completed forms to economics.pgoffice@warwick.ac.uk

Supporting You

- **Personal tutors;** your allocated tutor will be shown in Tabula and meetings take place in week 1
- **Senior Tutor** is Dr Mahnaz Nazneen
- Academic & Pastoral Support Drop-in sessions during induction (see [timetable](#) for details)
- [Wellbeing drop-in sessions](#) in term time
- If you are having problems on a module, see the lecturer or class tutor first
- Then, bring it up with your student representatives



Mitigating Circumstances

- If you need to **miss an exam or test** due to illness or personal problems, please use the Personal Circumstances portal in Tabula to inform us
- Read about [self-certification](#) for deadlines
- Specific **coursework extension** requests (with supporting evidence) can also be submitted through Tabula
- These are subject to approval by the Postgraduate Office.

Institutional Support

- [Wellbeing Support Services](#)
- [The University Health Centre](#)
 - Please register with a GP before you get sick
 - NHS 111 service: dial 111 for non-emergency fast help
- [The Students' Union](#)
 - Nightline service: 9pm to 9am student-run listening service
 - 02476522199
- [Student Information Centre](#)
 - Enquiries about Student Records, Student Finance and Accommodation

Academic Support

- Induction sessions
 - Learning to Learn in Economics
 - Academic study skills
- Maths/Stats weekly drop-in sessions
- Refresher Maths for Economics
- Stata Helpdesk
- Advice and Feedback Hours
- Dissertation Helpdesks
- Economics Librarian
- Compulsory training courses
 - [Introduction to Referencing](#)
 - [Avoiding Plagiarism](#)

Full details are given on our [Academic Support](#) webpage

IT Support

- [Guide for new students](#)
- For help contact the [IT Services Help Desk](#) or [Economics IT support](#)
- Keep your files safe in the cloud with [OneDrive](#) or your H:Drive. Don't save your work on your laptop
- Use [OneNote](#) for lecture notes and other material
- [STATA](#) - both Econometrics A and B use it exclusively
- Introductory Moodle courses:
 - [STATA](#), [LaTeX](#), [R](#)

Study Facilities

Department of Economics

- Study Rooms
S1.136, S1.138, S1.139 & S1.140
- Kitchen - S1.129
- Common Room - S1.131 & S1.133
- Group Work - S1.135 ([book in advance](#))
- Bloomberg - S0.55 ([book in advance](#))

University

- [PG Hub](#) and [Library](#)



International Students

WARWICK

ECONOMICS

- There is a webpage for [international students](#), which includes [immigration advice](#)
- Welcome sessions for international students on Wednesday 2 October 1-2pm
- Student visa holders:
 - Limited to working 20 hours per week
 - Full time jobs or internships in the vacation periods are not permitted
 - [Change of study location](#): Students should remain in the UK until the end of the Summer Term.



Beyond Study

- Warwick Economics Lecture Series
- Social Events
- Student Societies
- Student Opportunity
- Graduate Student Staff Liaison Committee (GSSLC): please consider nominating yourself as a student representative
- Sport: Football and Volleyball



WARWICK
ECONOMICS



Preparing for Life After Warwick

Careers

- Check out our [website](#) and [Student Careers](#)
- Attend the Careers Sessions on Thurs 3 and Friday 4 October
- Finance roles: Sept/Oct deadline
- Internship Scheme ([WISE](#))
- Job vacancies advertised via MS Teams (details to follow)

Employability

- Networking: [mentoring](#) and [LinkedIn Groups](#)
- Key skills from your degree are explained in the [handbook](#)
- Look at the [Warwick Award](#)
- [IT skills training](#)
- [English Language skills](#)
- [Foreign language skills](#)

Postgraduate Taught Experience Survey

PTES

PTES

- Conducted by the University in conjunction with Advance HE
- We value your contribution. It means we can continue to enhance the experience of our students.
- Have a look at our [We have acted on your feedback](#) page.
- Opens in April 2025.

Result 2024

- 95% the course is intellectually stimulating
- 92% changes to teaching were communicated effectively and the timetable worked well
- 94% IT resources were good
- 89% the course had enhanced their academic ability and improved their confidence in independent learning

Finally

You must be **fully enrolled** to attend any teaching
If you have not already done, please go to the Student Opportunity Hub and the PG Office to complete your University and Departmental enrolment

Today

- Lectures: 2.00-5.00pm
- Welcome Reception: 5.00-6.00pm in the Rootes Building Atrium

Tuesday-Friday

- Lectures: 10.00am-1.00pm
- Classes 2.00-5.00pm (see [Tabula](#) for details)

WARWICK

ECONOMICS



**Thank you
Any questions?**

**We look forward to seeing
you at 5pm in the Rootes
Atrium.**

