

November 2010

No.28

**Great War, Civil War, and Recovery: Russia's National Income, 1913  
to 1928**

Andrei Markevich, New Economic School, Moscow & Department of Economics,  
University of Warwick.

Mark Harrison, Department of Economics & CAGE, University of Warwick,  
Centre for Russian and East European Studies, University of Birmingham  
Hoover Institution on War, Revolution, and Peace, Stanford University

**WORKING PAPER SERIES**

Centre for Competitive Advantage in the Global Economy

Department of Economics

# Great War, Civil War, and Recovery: Russia's National Income, 1913 to 1928\*

---

Andrei Markevich\*\*  
New Economic School, Moscow  
Department of Economics, University of Warwick

Mark Harrison\*\*\*  
Department of Economics and Centre on Competitive Advantage in the Global Economy,  
University of Warwick  
Centre for Russian and East European Studies, University of Birmingham  
Hoover Institution on War, Revolution, and Peace, Stanford University

## *Abstract*

The last remaining gap in the national accounts of Russia and the USSR in the twentieth century, 1913 to 1928, includes the Great War, the Civil War, and postwar recovery. Filling this gap, we find that the Russian economy did somewhat better in the Great War than was previously thought; in the Civil War it did correspondingly worse; war losses persisted into peacetime, and were not fully restored under the New Economic Policy. We compare this experience across regions and over time. The Great War and Civil War produced the deepest economic trauma of Russia's troubled twentieth century.

Keywords: Civil War, GDP, Russia, Soviet Union, World War I.

JEL Codes: E20, N14, N44, O52.

---

\* Earlier versions of this paper were presented at the World Economic History Congress, Utrecht, August 3 to 7, 2009, the Higher School of Economics annual conference, Moscow, April 6 to 8, 2010, and the seminar of the New Economic School, Moscow, November 11 to 13, 2010. The authors thank Sergei Afontsev, Michael Ellman, Iurii Goland, Sergei Guriev, Paul R. Gregory, Sherman Xiaogang Lai, Andrei Poletaev, Stephen Wheatcroft, Gavin Wright, and the editor and referees for advice, and Natalia Gonzalez and Marina Tsetlin for assistance. Markevich thanks the New Economic School for its support and facilities. Harrison thanks the University of Warwick for research leave and the Hoover Institution for generous hospitality.

\*\* Mail: New Economic School, Suite 1721, Nakhimovskii Prospekt 47, 117418 Moscow, Russia. E-mail: [amarkevich@nes.ru](mailto:amarkevich@nes.ru).

\*\*\* Mail: Department of Economics, University of Warwick, Coventry CV4 7AL, United Kingdom. Email: [mark.harrison@warwick.ac.uk](mailto:mark.harrison@warwick.ac.uk).

First draft: May 31, 2009. This version: November 26, 2010.

# Great War, Civil War, and Recovery: Russia's National Income, 1913 to 1928

---

The long-run impact of the Great War (1914 to 1917), the Bolshevik Revolution of 1917, and the Civil War (1918 to 1921) on the economic life of Russia's citizens can scarcely be overstated. Their immediate impact was also profound, but comprehensive measures of this are lacking. Paul R. Gregory (1982) has provided our best measure of the real national product of the Russian Empire, based on final expenditures, year by year from 1885 to 1913. The annual record begins again in 1928 with Abram Bergson (1961) (GNP by final uses in 1928 and subsequent benchmark years), Moorsteen and Powell (1966) (GNP by sector of origin, 1928 and annually thereafter to 1966), and the U.S. Central Intelligence Agency (CIA 1982, 1990) (GNP from 1950 to 1985), summarized by Ofer (1987). The interval from 1913 to 1928 is left.

Why does the gap matter? The real national income of a country is, after all, only one dimension of its national experience. In this case, however, it is a missing dimension. Without it, we cannot offer conclusive judgments about the performance of Russia's wartime economy. How effectively did alternative government policies and economic systems mobilize the economy in time of war? After seven years of international and civil conflict, how great and how persistent were the damage and losses? It is not easy to judge the pace of the postwar recovery when we do not know exactly the scale of the catastrophe that recovery was from. It is also important to understand the starting point of Soviet industrialization under Stalin's five-year plans. By 1928, was the Soviet recovery from Russia's Great War and Revolution complete, adjusted for territorial change? Had national income per head, on average, returned to its 1913 benchmark by 1928? The answer has a clear bearing on the success or otherwise of Stalin's early five-year plans.

The missing years have a wider significance beyond Russia. The horrors of war and civil war in Russia were not unique. By filling the gap we aim to place Russia more precisely in the spectrum of national experiences of war and civil war in the nineteenth and twentieth centuries.

In this paper we consider, first, the legacy of our predecessors and, in that context, the contributions we can hope to make. Second, we review the economic and demographic challenges presented by the changing borders of Russia and the Soviet Union. In the third section we discuss Russia's national income in 1913, our chosen base year. The fourth section sets out our detailed results. Fifth, we place our results in an international comparative context and, sixth, in the context of more than a century of Russian and Soviet economic growth. The final section concludes.

## 1. Starting Points

We are not the first to labor in this vineyard. Sectoral and national income and production estimates were previously compiled and published within Soviet Russia and the Soviet Union by Prokopovich (1918b), Litoshenko (1925, 1927), Groman (1927), Gukhman (1928), Varzar (1929),

and various official agencies including Gosplan (1929), TsUNKhU (1939), and TsSU (1957). Some of these have been helpfully collated by Poletaev (1998). Outside Russia we note Prokopovich (1930), Nutter (1963), Falkus (1968), Gatrell and Harrison (1993), and Gatrell (2005). In Appendix A we report and compare these estimates in more detail.

None of these estimates was complete, consistent, and internationally comparable in relation to the period, territory, and branches of activity that were covered. Some estimates took into account only industry and agriculture. As we discuss below, nearly all estimates conformed, intentionally or by default, to a material-product concept that excluded the contribution of final services to national income. A number of estimates incorporated significant statistical biases.

In the west there have been concerted efforts to understand the quantitative changes in the Soviet economy of 1928 compared with the Russian economy in 1913. The multi-author collections edited by Davies (1990) and Davies, Harrison, and Wheatcroft (1994) included chapters on national income by Gregory (1990), on agriculture by Wheatcroft (1990), on statistics, population, and agriculture by Davies and Wheatcroft (1994a,b,c), on transport by Westwood (1990, 1994), and specifically on the Great War and Civil War by Gatrell (1994).

Of all past attempts to understand what happened to Russian national income, by far the cleanest are those of Gregory. Gregory (1982) built up his expenditure-side figures from nominal outlays up to 1913, and also in 1928, deflated by price indices. Gregory (1990) modified the 1928 comparison in response to criticisms by Wheatcroft, Davies, and Cooper (1986). The result is a glass bridge across the gap from 1913 to 1928, providing consistent and comparable estimates of Soviet real national income in the final year relative to the initial year. As Table 1 shows, Gregory found that by 1928 real national income exceeded the 1913 level (within Soviet frontiers) by at most 6.5 percent; since the population on that territory increased by more, average incomes declined somewhat over the years that lay between.

As yet, we lack definitive measures of aggregate economic performance for the years in between. This lack has not deterred scholars from setting out to evaluate the changing Soviet economic policies and institutions over this period. Useful studies of the economic organization of Soviet Russia from the Bolshevik Revolution through the Civil War and the years of recovery include Dobb (1949), Carr (1952), Zaleski (1962), Nove (1972), Davies (1989), Malle (1985), and Boettke (1990). More specialized studies have given attention to agriculture and the peasantry (Kabanov 1988, Figes 1989; Lih 1990; Litoshenko 2001), industry (Kafengaus 1993), urban consumption and trade (Hessler 2004), the famine (Adamets 2006), public finance (Goland 2006; McMeekin 2009; Osokina 2009), and labour (Il'iukhov 2010) in this period.

Allen's (2003) reevaluation of Soviet economic development over the longer term does not address the Great War-Civil War period specifically but has important implications that we will address.

The page from which we start is not, therefore, completely blank, but there are significant gaps and discrepancies. To what extent and to what effect can we improve on what already exists? Our contributions to Russian national accounting fall under three headings – intertemporal completeness; conceptual improvement; and explicit consideration of the welfare aspect of national income in wartime.

First, we provide intertemporal completeness. We fill in all years of this turbulent period. Second, we improve conceptually on existing measures of Russian and Soviet wartime GNP. Russian national accounting has been dogged by the legacy of the “material product system.” This was formalized by the United Nations after World War II (UN 1971), but its intellectual roots go back to Adam Smith and before, and go deep into the thinking of many that would be unfamiliar with its methodological detail. The material product of a society is based on the value of physical commodities produced; this includes the value of intermediate services, such as freight transport, consumed in their production, but excludes services of all kinds (civilian and military, provided privately and by the government) that meet final demand. It has a natural appeal for all that prefer the counting of things over intangible services that are consumed in the same moment that they are produced. This includes many economic historians, given the priority that our discipline has traditionally granted to industrial over commercial revolution. These preferences are present in all previous estimates of Russia’s national income that extend into the period of Great War and Civil War.

Yet, for good reason, the GNP-based “system of national accounts,” which the 2008 SNA is the most recent version (UN 2009), insists that national income should include the value added by the factors of production engaging in producing all goods and services, including services that satisfy final demands. Final services contribute to consumer utility and social welfare. To omit them would make much economic growth in Europe and North America disappear (Broadberry 2006). Even in the short run, the neglect of final services would result in significant distortion if the final services component of GNP were to change sharply. National security is, by convention, a final demand, and the military services that produce it are a final use of resources. In wartime, when the share of the economy devoted to producing military services is relatively expanded. A national income concept that omitted this would ignore a vital discontinuity in the pace of economic activity.

This is what the international conventions say; is it right? It leads to our third contribution. We will offer explicit consideration of the welfare aspects of warfare. The measurement of GNP in wartime raises ethical issues, reviewed recently by Harrison (1996) and Higgs (2006). In principle, GNP should measure the aspect of social welfare that is associated with the provision of goods and services. There is then a paradox in war booms, when war and GNP move oppositely. War reduces social welfare, yet wartime mobilization may raise GNP, measured on a basis that includes military services as an addition to GNP. (In the same way, a crime wave lowers welfare, but crime fighting adds to GNP.)

There are two ways to resolve this paradox. One way is surgical: to exclude expenditures on national defense from GNP. In this perspective, defense is not a final service but an intermediate one that contributes to the costs of maintaining society (Higgs 2006). Accordingly, we should redefine defense as an intermediate use of resources, and count only civilian goods and services as final contributions to social welfare. On this basis, the paradox goes away because the outbreak of war shifts GNP and social welfare in the same direction – downwards.

The surgical procedure is a not unattractive solution, but leaves us with the same problem as with surgery generally: where to stop cutting. On the surgical criterion we should also cut the costs of policing out of GNP, because policing is an input into personal security. Going further,

should we not also cut away the value of basic housing, fuel, and food? These are essential inputs into personal maintenance; without them, people would die off and so society would break down. In other words, housing, fuel, and food are costs of society's upkeep, just like defense; if defense should be removed from GNP, so should they. In fact, just about everything can potentially be removed from GNP on the basis that it is intermediate to some other final goal.

Another problem with the surgical approach is that it would violate the international conventions on GNP that now give a more or less universal answer to what we mean by national income. Imperfect as the rules may be, it is questionable whether we should deviate unilaterally. One result would be to destroy the comparability of measures of Russian economic growth and development over both time and space, and what then is the point of producing them?

There are other solutions to the paradox that allow us reasonably to conserve existing conventions on the measurement of GNP. One involves a thought experiment. When war breaks out welfare declines and GNP rises but, without the increase in GNP, welfare would presumably decline by even more. In this sense the output generated to wage war contributes positively to social welfare since, in its absence, society would be undefended and so worse off. This is one reason why military services ought to count positively in GNP.

There is one powerful objection to this argument: the case of civil war. When one part of a society wages war on each other, what is the "society" that stands to benefit from "national defense"? Civil war is a negative-sum game, since the military spending of each faction is not only to the detriment of the other, but also to the detriment of all. Note that, if this argument applies to civil wars, then it must apply to all wars. If we are one race, the human race, sharing a single planet, then all wars are fratricidal. It is a problem, however, that international relations are governed by a prisoner's dilemma: conditional on the possibility of international conflict, the dominant strategy of each nation must be to protect its own welfare by force. Thus, we include the military spending of each nation when we aggregate GNPs up to a global measure of economic development – world GNP – despite the fact that military competition is a detriment for the world as a whole. If we apply this logic globally, is there any reason not to extend it to the fractions of society that engage in civil conflict with each other? One reason might be the principle of legitimate force. Under international law it is legitimate for states to maintain armed forces, whereas the preparation of civil war is always a crime under domestic law.

Finally, Abram Bergson (1961) argued cogently that, whether or not it corresponds with actual social welfare, GNP as conventionally measured does at least represent an observation of society's productive possibilities, or the potential to deliver social welfare under alternative conditions – for example, the absence of war. Objections to this line of reasoning (Rosefielde and Pfouts 1995; Rosefielde 2005) are based primarily on the presumed divergence of Soviet "planned" prices from proportionality of marginal rates of transformation and substitution. These objections do not seem to be compelling in the present case, given that our base year is 1913 when Russia was still a relatively free market economy.

To conclude, we have no original solutions to the paradox of GNP in wartime. Our default is to follow convention so as to produce measures of GNP that, whatever they mean, are at least

internationally recognizable and comparable with national accounts of other periods and other countries. At the same time we will, where appropriate, make explicit the welfare implications. This will be our third contribution. Even then, having measured output and incomes, we will not have measured human development or the economic aspect of well being. When inequality is changing, for example, Stevenson and Wolfers (2008) have proposed that the trend in welfare may be captured by the average of logs of personal incomes better than average incomes. This is far beyond what we can do now, and is likely to remain out of reach.

## 2. Territory and Population

Between 1913 and 1928 the territory that we are accounting for changed. The Russian Empire disintegrated and was reassembled. During the revolutionary upheaval, Finland, Estonia, Latvia, Lithuania, Poland, and parts of the Ukraine and Belorussia left the Russian Empire. Then, in Central Asia the territories of Khiva and Bukhara were incorporated into the Soviet Union, a process formalized in February 1925 by the creation of the Uzbek and Turkmen union republics (Carr 1959, pp. 288-289). Table 2 lists the effects of these changes on the territory and population of the Russian Empire and the Soviet Union. The net effect on territory was small; the land surface under Moscow's dominion in the 1920s was reduced by less than three per cent, compared with that under St Petersburg in 1913. Since the areas lost were densely settled, the effect on population was dramatic, removing one fifth of the official residents of the Empire of 1913 from Moscow's control.

The confusion of border changes raises the question of what national entity and associated territory we should take for our 1913 baseline. One option would be the Russian Empire, perhaps excluding Poland and Finland. We can follow what happened on this territory through 1917, but no further. Our other option is to take the territory of the Soviet state within the frontiers of 1925 to 1939 ("interwar borders") as our benchmark. What happened on this territory can be tracked back to 1913, either from estimates made retrospectively in the 1920s or, where possible, by ourselves deducting the western regions from the Empire. We then follow it through the years after 1917 with relative ease.

As shown in Table 2, the population of the Russian empire (excluding Poland and Finland) in 1913 was officially some 159 million; on the same official figures, the number of people living on the territory of the future Soviet state in the same year, at 138 million, was more than 20 million less. These figures require correction. Government statistics overstated the population of the Russian Empire. The only census of the imperial population was held in 1897. Over the years that followed, in the rural localities of European Russia, the authorities correctly registered births and deaths but failed to count the out-migration of peasants to cities or to Siberia. At the same time, these newcomers were counted at their new places of residence. As a result, they appeared twice in the demographic statistics. This double counting accumulated for almost twenty years.

The scale of correction required is not completely clear. Statisticians were aware of the problem at the time. In the 1920s there were several attempts, reviewed by Vainshtein (1960), to estimate the true numbers. Because these authors generally did not describe their

methodologies, it is hard for us prefer one correction over another. Nearer to our own time, working forward from the 1897 census on the basis of births, deaths, and net migration in each year, Sifman (1977) proposed to subtract 5.38 percent from the 1914 population, and it is this that provides our point of departure.

Table 2 shows the corrected population of the Russian Empire at the beginning of 1913 (excluding Poland and Finland) as 150 millions. Correspondingly, about 133 million people lived on future Soviet territory in the same year. Appendix B provides full details of this transition. By 1928, the Soviet population had grown to 152 millions – a relatively safe figure, based on the first Soviet census of 1926. Accounting for what happened between 1913 and 1926 is, in contrast, uncertain. Three demographic catastrophes overlapped, arising from the Great War, the Civil War, and a postwar famine. Apportioning deaths among them is a hazardous and unfinished business; Vyshnevskii (2006) reviews previous attempts. To summarize the appendix briefly, we divide the period into 1913 to 1918 and 1920 to 1928. In the first period, we start from Sifman's corrected 1914 population figure. For 1913 and 1915 to 1918 we apply annual birth and death rates from Boiarskii (1948), with war losses and net migration, forced and voluntary, from Volkov (1930). From the closing stage of the Civil War (1920) to the first USSR population census (1926), we use figures reconstructed by Andreev, Darskii, and Khar'kova (1993).<sup>1</sup> That leaves 1919, for which we average 1918 and 1920.

Table 3 presents the results of our reconstruction.<sup>2</sup> Series for Soviet interwar territory and the Russian empire both show an increase in the population during the first years of the Great War. After 1915 trends diverge. On the Empire territory population then fell continuously until the data come to an end. The main factors were a rise in mortality and (to a smaller extent) a drop in fertility. On Soviet territory, in contrast, the population continued to grow until 1918. The reason was that an incoming wave refugees from the borderland territories of the future independent states, which were strongly affected by conflict, to the interior regions of the Empire that would later form the Soviet Union. The influx onto Soviet territory more than offset the decline in the indigenous population. It came to an end when the Empire collapsed and Russia's Great War ended. Then the Civil War began and the Soviet population went into decline for several years. Its net natural increase remained negative because of high death rates associated with combat, infectious diseases, and famine. At the same time the earlier inward migration was partly reversed because some wartime refugees from the borderlands returned home, leaving Soviet territory to do so, and some indigenous inhabitants joined the White

---

<sup>1</sup> For full details see Appendix B. Andreev et al. (1993) provide three variants for the early years, based on higher, lower, and median estimates of mortality. We use the higher mortality series on the basis of a study on mortality by Adamets (2003). We further correct the figure for net migration used by Andreev et al. for a misprint that they took over from their original source, Maksudov (1989).

<sup>2</sup> In this and other tables, numbers are italicized when they are found by interpolation on other series or extrapolation from preceding or subsequent years.



emigration. Only after 1923 did population growth resume at the rate of 2.5 million per year on average.

Over the turbulent decade from the first day of 1914 to the last of 1923, the net change of the population on Soviet territory was positive by a small margin. We account for the components of this increase as follows (in thousands):<sup>3</sup>

|  |         |
|--|---------|
| 1. Net increase                        | 3,834   |
| 2. Births, total                       | 52,156  |
| 3. Deaths, total                       | -49,994 |
| Of which,                              |         |
| 4. Normal deaths                       | -36,958 |
| 5. Excess deaths (row 4, less 5)       | -13,037 |
| Of which,                              |         |
| 6. Military deaths, 1914 to 1917       | -1,626  |
| 7. Other excess deaths (row 6, less 7) | -11,411 |
| 8. Net migration                       | 1,672   |

“Excess” deaths are not the exact number that were killed or died prematurely as a direct result of the Great War and Civil War, for this number is not knowable. Rather, it is the least number that must have been killed or died prematurely because of warfare, given the peacetime probability that some would have died anyway. Our figure of 13 million excess deaths falls between the 12 million proposed by Boiarskii (1948) and the 13.8 million found by Maksudov (1989).

---

<sup>3</sup> For full details, see Appendix B, Table B-3. Our starting point is the 3.8 million net increase found by subtracting the population of 1913 (working forward from the 1897 census) from that of 1924 (working backwards from the 1926 census). We calculate the total of births from fertility rates of Boiarskii (1948), based on the age composition of the population from 1926 census and aging factors. The total of deaths is based on civilian death rates from Boiarskii (1948) for 1914 to 1917, Great War military losses from Volkov (1930), and total death rates from Adamets (2003) for 1918 and 1919 and Andreev et al (1993) for 1920 to 1928. We project normal losses on the base of average mortality in the years before and after the decade. Subtracting normal from total mortality leaves 13 million excess deaths. Thus the total number of births over the decade exceeded the total number of deaths by 2.16 millions. Since this falls short of the net increase in the population, we estimate net migration as the residual. The inflow of refugees from the Western provinces of the Empire before 1918 exceeded the combined sum of the return migration after this year and the White emigration by 1.67 million people. Because the White emigration was about 2 million people it follows that, of the inward refugees, 3.67 million resettled in the USSR. This result is consistent with the findings of Volkov (1930) and Gatrell (1999), who report that report 9.7 million as the gross number of inward refugees, and 4.75 million as the number that were registered as having subsequently left Soviet territory; an unknown fraction of the remaining 4.95 million also left without being registered.

### 3. Values and Prices

The importance of index number relativity for Russian and Soviet economic history has been recognized since Alexander Gerschenkron's (1951) work on Soviet machinery output identified the gap between alternative measures of the change in economic volume when price and quantity changes are negatively correlated.

We calculate the real national income of Russia and the Soviet Union only in the prevailing prices of 1913. We do not expect revaluation in the prices of 1928 to be either meaningful or informative. With regard to meaning, the most important consideration is that in 1913 Russia had a relatively free and open market economy, participating extensively in world trade, with market prices responding flexibly to supply and demand. From this point of view the national income of 1928, revalued at 1913 prices, has a reasonably clear economic meaning.

The economic meaning of the national income of 1913, revalued at the prices of 1928, is not so clear. By 1928, the Soviet economy had been cut off from the world by a state monopoly of foreign trade. Domestic prices were distorted by controls, subsidies, and pervasive market disequilibria. The terms of peasant trade with industry were much less favorable than before (Harrison 1990, pp. 113, 288; Allen 2003, p. 83). Bolshevik interventions sought increasingly to control both prices and quantities (Harrison 2008). In fact, when Abram Bergson (1961) surveyed the interwar years for the closest approximation to market-clearing prices, he preferred 1937 to 1928 – which says little for 1937, but even less for 1928. This is why we do not expect revaluation in the prices of 1928 to be particularly meaningful.

The reason we do not expect it to be productive is more practical. A change in base-year prices will affect comparisons of economic volumes across time only in the presence of structural change. If relative volumes do not change, change in relative prices will leave volume measures unaffected. We will see in Table 4 that the sector shares of the main branches in value added, calculated at 1913 prices, were as follows:

|         | Agriculture | Civilian non-<br>agriculture | Military<br>services | NNP  |
|---------|-------------|------------------------------|----------------------|------|
| 1913    | 44.4%       | 54.3%                        | 1.3%                 | 100% |
| 1920    | 53.0%       | 36.5%                        | 10.5%                | 100% |
| 1927/28 | 44.9%       | 54.6%                        | 0.5%                 | 100% |

Branch shares in the Soviet economy in 1927/28 were nearly identical to those of the Russian economy in 1913.<sup>4</sup> There was some within-sector change: in agriculture, livestock and industrial

---

<sup>4</sup> From 1922 to 1930, annual Soviet economic accounts were organized on the basis of the "economic year," which ran from October to September, i.e. from harvest to harvest. Our usage follows the rule that "1922" refers to the calendar year, while "1922/23" is the economic year, running from October 1, 1922, to September 30, 1923. This is why, in Table 3, we were at pains to identify the July 1 (mid-calendar year) and April 1 (mid-economic year) population totals separately.

crops expanded at the expense of grains, and in industry large scale public establishments squeezed the private artisan sector. These changes were very limited. The effect is that revaluing industrial commodities relative to agricultural produce would leave the comparison of 1928 to 1913 approximately unchanged. To this extent, revaluation in the prices of 1928 would be unproductive.

The figures do show that sector shares varied a lot in intervening years; it was only the starting and finishing points that were roughly similar. In wartime civilian nonagriculture lost ground relatively as well as absolutely, and would be relatively favored by a shift to 1928 prices. Because of this, revaluing everything in terms of 1928 would make the wartime decline look still more catastrophic and the recovery correspondingly steeper. This is what makes the choice of base year non-trivial. But we would not learn anything from it that we do not know already.

A completely separate reason to question our choice of 1913 as a benchmark is the argument that it may have been an abnormal year. There was a bumper harvest of food grains, much above the trend since 1885 (Harrison 1994, p. 333n). This prompted Wheatcroft, Davies, and Cooper (1986), Davies (1990), and Harrison (1994) to recommend that the 1920s should be benchmarked against the non-agricultural production of 1913 combined with agricultural production averaged over 1909 to 1913.

We reject this procedure. What happened in 1913 happened. If smoothing is required, it should be done after calculating the national income, not in the course of doing so. If smoothing is applied to the grain harvest, moreover, consistency requires that it should also be done to the other four fifths of national income. But this turns out to be unnecessary. The log-linear trend of average real incomes from 1885 to 1912 predicts the outcome in 1913 within one half of one per cent.<sup>5</sup> For the economy as a whole, in other words, 1913 was a normal year.

## 4. Real National Income

In Table 4, we estimate the real national income of the Russian Empire and the Soviet Union by sector of origin. We start from the production branch structure of net value added in 1913 on the territories of the Russian Empire (excluding Finland) and the USSR within interwar borders. We use these to weight annual series of branch production, rolling national income of the two territories forward in parallel, year on year to 1917.<sup>6</sup> In each year of the overlap, the transition

---

<sup>5</sup> Net national income per head from 1885 to 1913 in rubles and 1913 prices is from Gregory (1980, pp. 56-57). Taking natural logs, with  $t$  ratios in brackets, and omitting 1913,

$$\ln(INCOME) = -28.48 (7.535) + 0.01738 (8.731) \times YEAR; N = 28, R^2 = 0.7457.$$

Predicted income per head in 1913 is then 118 rubles 5 kopecks compared with measured 118 rubles 50 kopecks.

<sup>6</sup> Underlying national income shares are taken from Appendix C, Table C-1. There is a discrepancy of territorial coverage for the Russian Empire up to 1917. Annual time series of wartime production of the Russian Empire by sector of origin are based on the Empire territory,

from Russian to Soviet territory is found by subtracting activity on the lost territories (agriculture and transport); or by interpolating the trend in one territory on the trend in the other (industry, construction, and other civilian sectors); or by assuming a common trend and scaling from one territory to the other on the basis of relative populations (military services). From 1918 Appendix C provides branch-level data and describes sources and methods, while Appendixes D and E provide commodity-level data for agriculture and industry.

Chart 1 compares our aggregate figures for national income with previous estimates for comparable years, setting both Russia and USSR to 100 percent in the base year (1913 or thereabouts). Some previous estimates have provided relatively complete series for industry and agriculture combined, and Chart 2 compares these with our estimates for these two sectors alone.

*Chart 1. Russian and Soviet real national income, 1913 to 1928: New and old estimates, per cent of 1913*



Source: Tables 1 and 4 and Appendix A, Tables A-2 to A-4.

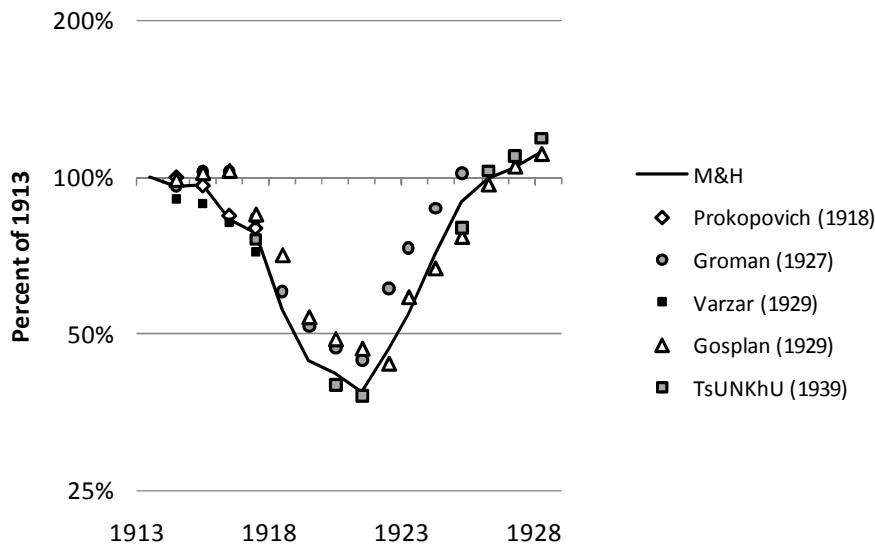
Table 5 compares output with population to find average incomes. While aggregate real output was about 10 percent greater in 1928 than in 1913, average incomes did not fully recover. The reason is that the total population increased by about 14 percent, within constant

---

excluding Finland and Poland. We weight them by national income shares based on the territory excluding Finland only. Ideally we would deduct the contributions of the Polish provinces of the Russian empire from these shares. The Polish provinces, with other western provinces of the future independent states, formed the economically most developed region of the Russian Empire, but the exact sectoral composition of Poland's national income in 1913 is unknown. Correction for this would leave our estimates effectively unchanged. As a cross-check, we applied Soviet-territory production branch weights estimated for 1913 to the Russian Empire production series. Annual pairs differed by not more than 0.15% in any year.

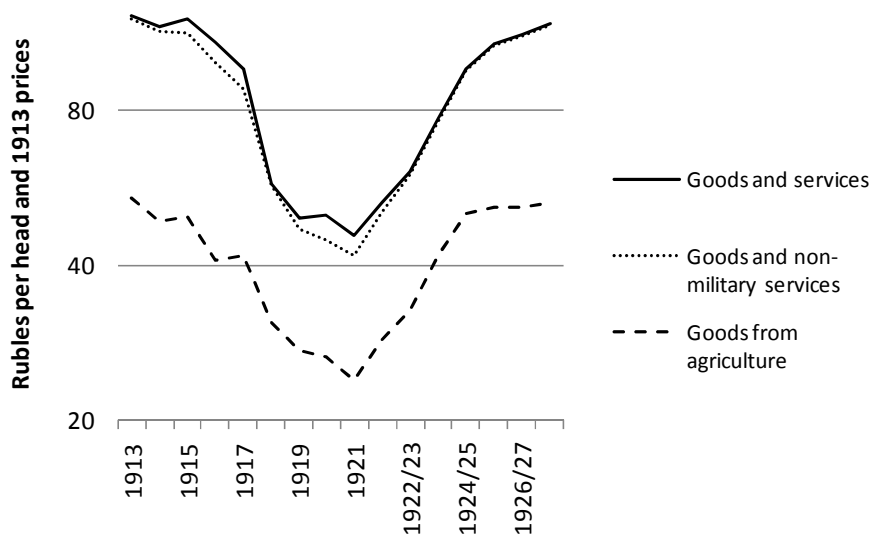
boundaries and taking the period as a whole. As a result, Soviet national income per head in 1928 fell short of the prewar benchmark by around 3 percent. This finding confirms the shortfall found independently by Gregory (1990) and reported in Table 1.

*Chart 2. Real national income produced in industry and agriculture on Soviet interwar territory, 1913 to 1928: New and old estimates, per cent of 1913*



Source: Table 4 and Appendix A, Tables A-1 and A-5.

*Chart 3. Real national income and consumption per head, 1913 to 1927/28: Soviet territory and various measures in rubles and 1913 prices*



Source: Table 5.

Chart 3 shows, in addition to national income (“goods and services”) per head, two other measures of the average level of existence of Russian and Soviet citizens. “Goods and non-military services” aims to capture the availability of resources for civilian use. In the spirit of Higgs (2006), it would exclude defense from national income as an intermediate rather than final use of resources. The military services excluded here are the labor services provided to defense; ideally we would also subtract the value of capital services and material consumption in the defense budget, but there are no measures on which we could base such a series. So this series is only an upper bound on the measure we desire. As the chart makes clear, resources for civilian use fell more rapidly than total output during the Great War, and again during the Civil War; although the Red Army never achieved the absolute numbers of the Imperial Army, overall resources were so shrunken by the low point of 1920 and 1921 that the proportional burden it represented was as great or larger.

Finally, “Goods from agriculture” aims to capture the trend in food availability per head, which fell to a catastrophically low level. The result was urban famine, then famine. The February 1917 Revolution that brought down the Tsar was sparked by urban food shortages. In October 1917 the Bolsheviks inherited a public and private distribution system in collapse (Carr 1952). Despite falling harvests, procurement brigades stripped the grain producing regions of food (Malle 1985; Figs 1989). Those who stayed in the towns were forced into a “crisis mode of consumption” (Hessler 2004, pp. 38-48). By the end of the war, money wages were apparently 4 percent of their prewar level in real terms (Il’iukhov 2010, p. 24), with workers surviving on public and private inventories and barter.

Although average incomes were not fully restored in 1927/28, the composition of national income by sector of origin was almost the same as it had been 1913. This is found by comparing the first and last rows of Table 4. There were two important differences. One was the growth of large-scale industry, mostly under public ownership, at the expense of small-scale industry under mostly private ownership. Another was a decline in the share of military activities by more than one half. From the standpoint of the civilian economy and consumption this was a “peace dividend,” but one that caused military and political leaders huge anxiety given Soviet Russia’s state of military encirclement—both real and imagined—in the late 1920s (Simonov 1996; Sokolov 2008). This concern became an important stimulus to Stalin’s Great Leap Forward.

The year-on-year pattern of change in real national income per head is revealing in various ways. As Chart 1 suggests, our results give Russia fuller credit for the military mobilization of 1914 through 1916 than previous estimates, and revise the pessimistic view of Russia’s Great War that is well established in the literature (Sidorov 1973, Gatrell 2005). The economy held up through 1915. By 1916 it was in decline, but was still less than 10 percent below the peacetime benchmark of 1913.

By the same token, the economic decline through the Revolution and Civil War appears sharper than in previous accounts. Comparing 1917 with 1913, output per head fell by one fifth in four years. Over the two years that followed, from 1917 to 1919, output per head halved. On Soviet territory the year-on-year decline (taken from Table 5) was as follows:

|      |        |
|------|--------|
| 1914 | -4.5%  |
| 1915 | 2.9%   |
| 1916 | -11.1% |
| 1917 | -12.1% |
| 1918 | -38.8% |
| 1919 | -13.7% |
| 1920 | 0.3%   |
| 1921 | -8.5%  |

Notably, output fell most precipitously *before* 1919 when the Red and White armies clashed most fiercely. This suggests strongly that the confrontational policies of “war communism,” with widespread nationalization of finance and industry, and rule by decree instead of market incentives, caused greater disruption than the fighting. Moreover, as the fighting died away, the economy stabilized at around 40 percent of prewar output but did not at first recover. By 1920, with a command economy in place, the Bolsheviks were able to stabilize large-scale state industry and return it to a path of modest growth. But agriculture continued to struggle, because the policy of surplus confiscation under war communism gave peasants no reason to produce food above subsistence (Litoshenko 2001). A deadly game ensued between the farmers and the authorities over the true level of food reserves in the countryside.

A notable feature of our results is that the famine year of 1921 came after a run of disastrous harvests. Ó Gráda (2007, pp. 7-9) has shown that famine is much more likely after two consecutive harvest failures, when the countryside has exhausted its reserves. As Table 4 and chart 3 reveal, 1921 was the third and worst year in a series of catastrophic grain harvests. Consistently with this, new research by Adamets (2003), suggests that the famine actually began in the summer of 1920, and in some regions as early as 1919.

Postwar recovery began only in 1922, following the revolutionary government’s decision to restore market relations and the private sector in small industry and urban-rural trade. The “New Economic Policy” (NEP) was announced in March 1921 under crisis conditions of accelerating hyperinflation and famine; recovery was marked only in the following year. The main mechanism of recovery was the exploitation of spare capacity which, according to Davies (1994, p. 345, footnote 15), continued until 1929/30. The year-on-year growth of Soviet GDP per head up to 1927/28 was then as follows:

|         |       |
|---------|-------|
| 1922    | 16.1% |
| 1922/23 | 15.3% |
| 1923/24 | 26.6% |
| 1924/25 | 24.9% |
| 1925/26 | 12.3% |
| 1926/27 | 4.1%  |
| 1927/28 | 5.2%  |

Strong at first, the recovery slowed rapidly to single-digit growth. In April 1929 when the Bolsheviks officially endorsed the “optimal” variant of the first Five-Year Plan, average incomes were just below the prewar level. In fact, Soviet GDP per head did not significantly exceed this benchmark until 1934. The prewar benchmark is a intuitive focal point for comparison, but is it

the right one? Inspired by Jánosy (1971), the comparative literature on trend growth, war, and postwar catch-up (Crafts and Mills 1996; Crafts and Toniolo 1996; Harrison 1998) suggests that productive potential does not stand still when war breaks out. From this point of view, the prewar benchmark is an excessively low bar. By 1928, fifteen years had passed since the outbreak of the Great War. If in the intervening period Russia's potential GDP per head had risen along its modest pre-1913 log-linear trend of 1.75 percent per year, then by the end of the 1920s the actual fell short of the potential by about one quarter.

While the period under scrutiny is all too short, our figures do not support the view that NEP provided effective institutions and policies for long term Soviet economic development. Once widely held, this view was updated recently by Allen (2003). Specifically, Allen argued that the best development strategy for the Soviet economy in the 1930s would have been industrialization under a soft budget constraint on industrial producers and without collectivization of agriculture, i.e. the New Economic Policy as it was implemented in the late 1920s. This conclusion is hard for us to swallow. One reason is in our figures: agriculture stagnated as the investment mobilization intensified, with significant aggregate effects that showed up in the deceleration and failed restoration of average incomes. Another reason is that Stalin was turning to violence against the peasantry at exactly this time, motivated by the need to resolve the urban rural market disequilibrium brought about by the soft budget constraint on industry.<sup>7</sup>

## 5. Russia in Comparison

In this section we aim to compare Russia's economic experience of world war, civil war, and recovery with that of other countries. Russia's experience of the Great War up to 1917 was neither better nor worse than that of most other European countries that entered the war. Previous research has suggested that national success in wartime mobilization varied inversely with the prewar level of economic development, controlling for contingent factors such as distance from the war and the time to mobilize (Broadberry and Harrison 2005, 2008; Eloranta and Harrison 2010). But this relationship is created with a limited sample, largely by contrasting

---

<sup>7</sup> These views have long pedigrees. It was the rethinking of the Soviet "model" of economic development in the 1960s and 1970s that did most to propagate favourable reevaluation of the New Economic Policy; for a survey see Harrison (1980). The adverse impact of macroeconomic disequilibrium on microeconomic incentives in the late 1920s, emphasized by Harrison (1980, 1990) and Johnson and Temin (1993), provides necessary context for new evidence on Bolshevik decision making surveyed by Harrison (2008). Allen's (2003) rethinking of the macroeconomics of NEP appears inconsistent: in simulations he finds that a soft budget constraint on public-sector industry added to Soviet welfare by raising aggregate employment and output (2003, pp. 167-171), while in narrating the history of the 1920s he accepts that macroeconomic imbalance contributed to the demise of NEP (pp. 85-86). But excess aggregate demand in the macroeconomy flowed from the soft budget constraint in the microeconomy. For related reservations see also Davies (2004).

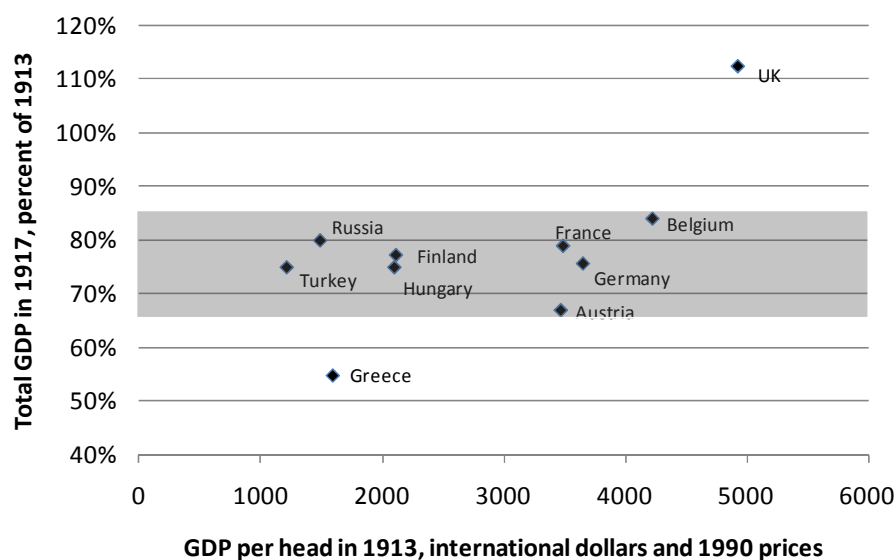


the richer maritime powers with poorer continental economies. It is also sensitive to the revision of individual data points.

Chart 4 plots changes in real GDP of ten Eurasian countries from 1913 to 1917 against their prewar level of economic development, represented by GDP per head in 1913, and incorporating revised data for Russia. In addition to Russia itself, we observe eight other continental powers (Belgium, Germany, France, Austria, Finland, Hungary, Greece, and Turkey), and one offshore power (the United Kingdom). There is a positive slope to the relationship, but this slope relies on two observations, the richest country (the United Kingdom, the only offshore power) and the third poorest (Greece). If these are excluded, the relationship is flat; the average for the continental powers was a GDP decline of 23%, while Russia's GDP declined by 20%.

Underlying this was a continental Eurasian pattern of wartime economic decline. The pattern reflected a common story, based on the burden of subsistence agriculture (Broadberry and Harrison 2005). Across the continent from Russia through Germany, Austria, Hungary, and the Balkans to the Ottoman Empire, military mobilization deprived peasant farmers of men and horses, which initiated a production decline. But the supply effect was secondary compared with the market disruption caused by the mobilization of domestic industry; this squeezed the availability of all those things for which peasants were willing to trade their food surpluses. Peasants withdrew from the market, cutting flows of food from country to town to a trickle. Interventions to ration food at low prices to urban consumers generally increased the market disequilibrium that already existed.

*Chart 4. Wartime mobilization: The GDPs of selected Eurasian countries in 1917, percent of 1913*



Source: Appendix F, Table F-1.

In Russia, town and country were drifting apart well before the revolutions of February and October 1917. This drift led to urban food shortage in 1916/17 and so contributed to the downfall of the old regime. But Russia was not alone in its experience of urban famine, and Russia's overall economic performance was no worse than that of other countries that conformed to the continental pattern of decline. Other factors must be called upon to explain why Russia took first place among the countries where the Great War ended in revolution.

The turn to political and social confrontation and civil war vastly magnified Russia's economic disintegration. In principle the causes and consequences of Russia's Civil War may be compared with those of other civil wars of the past two centuries. Quantitative studies using cross-country data have been limited to the period after 1945 (Paul Collier and Hoeffler 2007; Blattmann and Miguel 2010); they seem intrinsically unlikely to throw much light on the causes of civil war in Russia in 1917. Russia shows two markers that have had predictive value for the onset of civil war: a political constitution that restricted competition and participation, and several years of declining output (Blattmann and Miguel 2010). But so did most other countries in Central and Eastern Europe at that time; we will probably not be able to explain why Russia was the first to descend into revolution and civil war without reference to historical factors that were unique to that country and period.

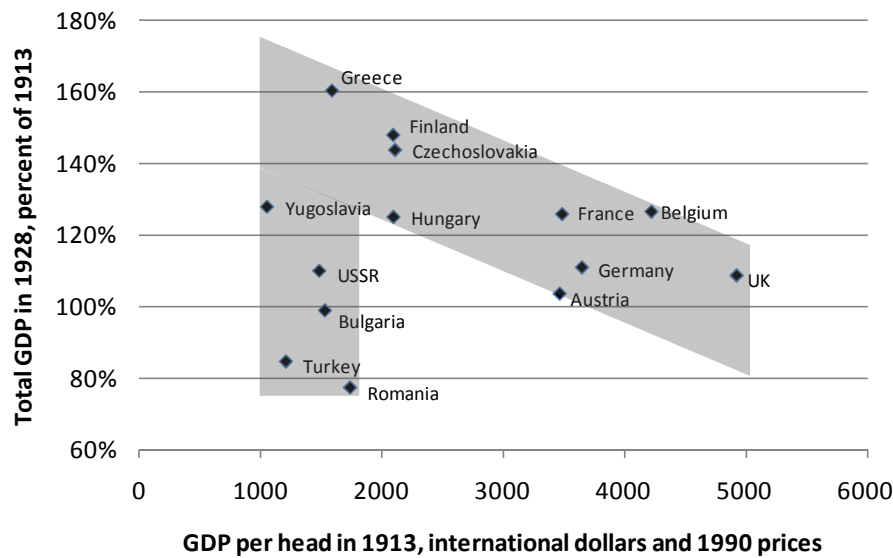
In the same way the progress and outcome of Russia's civil war have specific as well as general features. Paul Collier and Hoeffler (2004) have suggested civil conflict may begin with grievances, but selection into the ranks of the contending forces ensures that grievance gives way quickly to greed as the force that drives conflict to a conclusion. We see the Russian conflict sparked by grievance, then fuelled by greed, but with the difference that Bolshevik greed was for totalitarian power to the extent that it was not already for careerism and corruption (Raleigh 2006, p. 154).

The consequences of Russia's civil war were very severe in international comparison. In Russia, output fell by more than one half; this is much more than the average effects found for civil wars since 1945 (Blattmann and Miguel 2010). We look to earlier periods to find devastation on the same scale. On the losing Confederate side of the American Civil War of 1861 to 1865, production fell by half and real wages collapsed to 11 percent of their prewar level (Ransom 2001). What happened in the Russian Civil War was similar or worse. A difference was that it happened to the winners, not the losers.

The economic outcomes of the Russian Civil War also appear to have been more severe than those of civil war in Spain from 1936 to 1939. There, GDP fell by more than one quarter and consumption by more than one third between 1935 and 1938 (Martín Aceña 2006). In addition there was excess mortality of more than half a million up to 1942, or around 2 per cent of Spain's prewar population (Antonio Ortega and Silvestre 2006).

No production figures are available for China during its Civil War, fought intermittently from 1927 to 1949. As in the Russian case it is impossible to disentangle the premature deaths in the Civil War from those of the World War, but the total up to 1945 exceeded 35 million (Tao 2010, p. 13). In proportion to China's prewar population, around 500 million in the early 1930s, Russia's losses were similar or worse.

Chart 5. Postwar recovery: The GDPs of selected Eurasian countries in 1928, percent of 1913



Source: Appendix F, Table F-1.

Finally, we turn to recovery. Russia's recovery from its Great War and Civil War is placed in Eurasian context in Chart 5. This chart shows two principal moments in the pattern of postwar performance. One group of countries is ranged along a downward sloping convergence frontier from Greece on the left to the UK on the right. To the left, a second group of countries from Yugoslavia to Romania, all relatively poor at the outset, and more or less badly performing over the period, falls below the frontier.<sup>8</sup> The Soviet economy is found in the midst of this group. This confirms our pessimistic evaluation of Soviet economic performance under NEP.

## 6. The Long Run

Chart 6 sets our new estimates in the context of established long run real growth series for Russia and the Soviet Union from 1885 to 2006. It turns out that the Great War and Civil War

<sup>8</sup> This argument might be formalized further. We regress the annual average growth rate of GDP per head, 1913 to 1928, on the logarithm GDP per capita in 1913, a World War I dummy and a Soviet Union dummy for all 43 countries for which data are available in the Maddison dataset (<http://www.ggdc.net/maddison/>). We get:

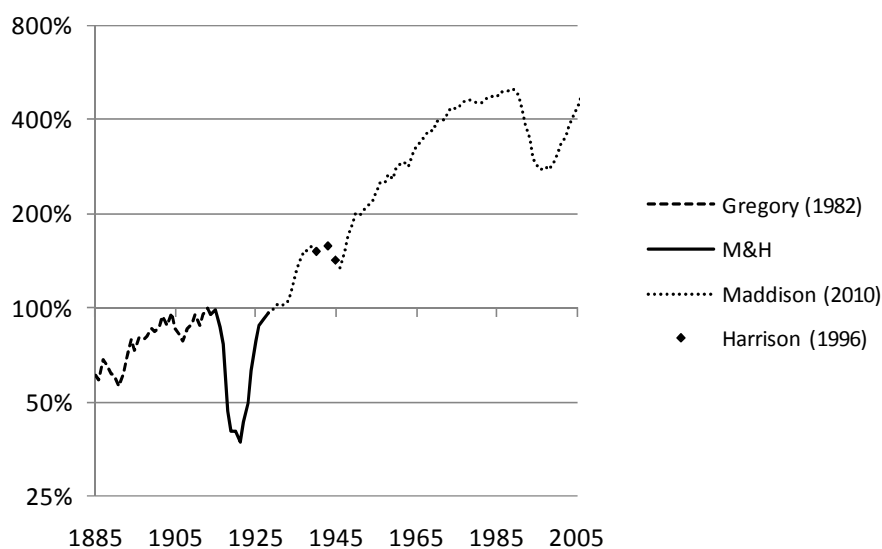
$$\text{Rate191328} = 0.07^{**} - 0.007^{**} \ln(\text{GDP/head1913}) - 0.009\text{WW1} - 0.015^{***}\text{SU};$$

$$N = 43, R^2 = 0.17$$

Table F-2 provides the dataset and results of other specifications. The coefficient on the Soviet Union is negative and statistically significant at the 1% level, i.e. the annual growth rate of average Soviet incomes between 1913 and 1928 was 1.5% slower than it should have been, conditional on the prewar GDP level and engagement in the war.

induced the deepest crisis that Russia experienced in more than a century of modern economic growth.

Chart 6. *Russia and the Soviet Union: Real national income per head, percent of 1913*



Source: Appendix F, Table F-3. All figures are indexed to 1913.

Table 6 provides a more detailed comparison with other major shocks to Russia in its troubled twentieth century. Taken together these comprise just about every disaster that can befall modern societies, including foreign wars, internal wars, famines, and state collapses. In the table we combine income and consumption measures with estimates of the accompanying demographic losses. Few of the figures in the table will ever command a scholarly consensus in precise terms, but they are broadly instructive. We briefly narrate the stories behind them.

Stalin's Great Breakthrough refers to the events following the adoption of the first Five Year Plan in April 1929. Consumption was repressed; capital was created in industry and labor and food were moved out of agriculture. Since productivity in both sectors declined, there was at first no gain in total output. The average figure for the consumption decline hides wide variation between regions and especially within the countryside. The struggle to control food distribution stripped the countryside of grains and spread famine through the Ukraine, the Volga region, the North Caucasus and Kazakhstan. Famine in the early 1930s contributed 5.5 to 6.5 million premature deaths.

Only in the mid-1930s did living standards begin to recover, peaking in 1937. Allen (2003) has argued with some justice that traditional index number concepts employed, for example, by Bergson (1961), somewhat understated the underlying welfare gain of up to 30 percent by 1937, compared with 1928 to 1937. However, Allen's own estimates for farm income in 1937 are probably too high; they rely too heavily on inferences from production statistics, and make no allowance for market disequilibrium (Davies 2004; Ellman 2004). And it should not be forgotten that millions of citizens who ought to have been alive to enjoy the unexpectedly good harvest of

1937 had starved to death in the interim. Presumably, their absence helped to lift the average consumption of the survivors.

It is notable from Chart 6 that Soviet average real incomes reached an interwar peak around 1939. Let us compare this peak with an earlier one, not 1913 but 1904, the eve of the 1905 Revolution, when incomes were already almost at the level of 1913. Over the 35 years from 1904 to 1939, incomes rose by about 75 percent. But in most intervening years there was no net growth at all. In fact, three quarters of the net growth that took place from peak to peak was achieved in just five years, from 1933 to 1937. By that year, the Soviet economy had just about struggled back to the pre-1913 trend.<sup>9</sup> This suggests that all Stalin had brought about by World War II was recovery from the 1905 Revolution, World War I, the Bolshevik Revolution, the Civil War, and his own policy of collectivization.

The central event of the decade from 1937 to 1947 was the Great Patriotic War of 1941 to 1945. Linked to it are preparations for war in the preceding years and a food crisis that followed the end of the war. Under war preparations we include both large-scale rearmament and the Great Terror, Stalin's preemptive war against his potential internal enemies (Khlevniuk 1996) that killed up to a million people in 1937/38. The war then added more than 26 million excess deaths in combat, and from disease, famine, and repression on both sides of the front line. With the German invasion, Soviet-controlled territory shrank, but Stalin's policies successfully managed the war economy. The loss of agricultural land and the intense mobilization of resources into war production and military services put living standards into a deadly squeeze, however. Coming on top of a prewar decline induced by rearmament pressures, consumption per head fell by up to one half. At the end of the war, a regional food crisis struck the Ukraine, southwestern Russia, and Soviet Moldavia and carried off more lives.

Finally, the collapse of the Soviet Union led to economic and demographic upheaval for post-Soviet Russia. The transition from socialism is the only crisis in which mass violence did not take the lead. In fact, it was associated with economic losses on the scale of a major war, but with only minor wars taking place. Official figures suggest that up to 1998 average incomes and consumption fell by around two fifths. Such figures overstate the decline in welfare, however, because they neglect the contemporaneous gain to consumers as the retail market evolved from severe shortage to equilibrium; this gain may have been substantial (Irwin Collier 2005).

While economic aspects are debated, assessments of the demographic costs of transition are extremely polarized. In Table 6 we give an upper and a lower limit. Our lower limit is 100,000 deaths arising from small-scale ethnic clashes and regional conflicts. Our upper limit includes additional deaths among men of working age across Russia as a whole, particularly from alcoholic-related causes, interpersonal violence, and other diseases (UNICEF 2000). The causes of increased mortality are disputed. The upper limit attributes all mortality above that predicted by the application of age-specific mortality rates of 1989 to transition. In support, Stuckler, King, and McKee (2009) assign responsibility for the additional mortality burden to mass privatization and the actual or expected unemployment that, they claim, it brought about.

---

<sup>9</sup> For the pre-1913 trend, see footnote 2.

To the contrary, Earle (2009), Brown and Gehlbach (2010) and Gerry, Mickiewicz, and Nikoloski (2010) reject the attribution of mortality while Brown, Earle, and Telegdy (2010) reject the transmission from privatization to unemployment. In earlier work, Brainerd and Cutler (2005) attributed up to a quarter of the increased mortality to the relative cheapening of alcohol over the same period. More generally, male life expectancy in the Soviet Union was on a downward trend from the 1960s until the last Soviet anti-alcohol campaign of the mid-1980s (Demoscope 2009). It is plausible that the mortality spike of the early 1990s consisted entirely of deaths that were postponed by the campaign, and so were stored up and waiting to happen when the campaign came to an end. These views of transitional mortality are uncompromisingly opposed to each other, and cannot be averaged.

Table 6 confirms that the Great War and Civil War rank first among Russia's economic disasters of the last century. National income per head fell by more than three fifths from 1913 to 1921. We approximate the consumption loss by agricultural production per head, which fell by more than one half. The overall burden of excess deaths was around 9 percent of the prewar population. Normalized by the prewar population, the demographic burden fell not far short of that of World War II. Hunger-related causes were the most important factor in excess mortality, followed by fighting and terror in the Civil War. Mass emigration also took place.

If there is a general lesson from Table 6, it is the importance of the state in the history of modern Russia. In the Great Breakthrough and the Great Patriotic War, the state remained intact. Production was maintained in the midst of disasters that killed millions of people. In particular the state retained its ability to transfer food from people of secondary status such as peasants and forced laborers, who then died, to soldiers and industrial workers, who then lived. In contrast the state failures of 1917 and 1991 were associated with huge losses of output as well as of consumption and lives. In each case the scale of deaths depended heavily on the presence of open violence; this is exemplified by the comparison of two transitions.

Since Vladimir Putin (2000), Russia's political establishment appears to believe that the answer for Russia is to shore up the "power vertical" of the state at all costs. In this view, no outcome is worse than a failed state. Russia's twentieth century shows that a failed state could be associated with terrible suffering, but it also associates grim suffering with a state powerful enough to starve and kill without restraint, with or without the intention to do so. Whether the answer for Russia is confined to state consolidation, or includes building an economy that is more deeply rooted in civil society and private enterprise and more resilient in the face of political action, is another story.

## 7. Conclusions

Our work fills the last remaining gap in the record of Russian and Soviet national income in the twentieth century. This gap, starting in 1914 and finishing in 1928, is full of historic and traumatic events: Russia's Great War, the Bolshevik Revolution and Civil War, and postwar reconstruction under the New Economic Policy, which set the stage for Stalin's Great Breakthrough to forced industrialization.

In comparison with previous interpretations, our findings give a more favorable picture of Russia's economic mobilization for the Great War. Correspondingly, we show the economic catastrophe of the Civil War in a harsher light. Our results confirm that by 1928 economic recovery, measured by national income per head, was most likely still incomplete. We draw negative inferences concerning both the quality of Soviet economic institutions and policies in the 1920s and the economic achievements of the 1930s.

Wars and revolutions have the capacity to wreak havoc on modern societies. Nesting one inside the other, Russia's Great War and Civil War led to economic disaster and demographic tragedy. The scale of losses can be measured against both Russian and global standards. In Russian terms it was the worst economic disaster of the twentieth century. Only World War II resulted in a greater loss of Russian lives. International comparisons also rank the Russian experience of warfare between 1914 and 1921 highly in the damage done to life and living standards.

## Tables

**Table 1. Gregory's population and national income: Russia and USSR, 1913 and 1928**

|   | Russian<br>Empire<br>exc.<br>Finland | Soviet Union,<br>interwar borders<br>Best<br>estimate | Upper<br>limit |
|---|--------------------------------------|---|----------------|
| <i>Population, million</i>                |                                      |   |                |
| 1913                                      | 171                                  | 139.7   |                |
| 1928                                      | ...                                  | 154   | 154            |
| Percent of 1913                           | ...                                  | 110.2%  | 110.2%         |
| <i>NNP, million rubles at 1913 prices</i> |                                      |   |                |
| 1913                                      | 20266                                | 16520   |                |
| 1928                                      | ...                                  | 15600   | 17600          |
| Percent of 1913                           | ...                                  | 94.4%   | 106.5%         |
| <i>NNP/head, rubles</i>                   |                                      |   |                |
| 1913                                      | 118.5                                | 118.3   |                |
| 1928                                      | ...                                  | 101.3   | 114.3          |
| Percent of 1913                           | ...                                  | 85.7%   | 96.6%          |

**Sources:**

Russia and Soviet Union, best estimate: Gregory (1982, p. 113).

Soviet Union, upper limit: Gregory (1990, p. 337).



**Table 2. From Russia to the USSR: Territories and Populations of January 1, 1913**

|                                | Area in<br>square<br>km | Official<br>popula-<br>tion | Less<br>double<br>counting | Corrected<br>popula-<br>tion |
|--------------------------------|-------------------------|-----------------------------|----------------------------|------------------------------|
|                                | 000                     | 000                         | 000                        | 000                          |
| Russian Empire in 1913 borders | 21800                   | 174100                      | ...                        | ...                          |
| Finland                        | -326                    | -3197                       | ...                        | ...                          |
| Empire exc. Finland            | 21474                   | 170903                      | -9195                      | 161708                       |
| Poland                         | -113                    | -11961                      | ...                        | ...                          |
| Empire exc. Finland and Poland | 21361                   | 158942                      | -8551                      | 150391                       |
| Other territory lost*          |                         |                             |                            |                              |
| Western                        | -375                    | -20047                      | ...                        | ...                          |
| Caucasus                       | -22                     | -475                        | ...                        | ...                          |
| USSR in 1922 borders           | 20964                   | 138420                      | ...                        | ...                          |
| Territory gained**             |                         |                             |                            |                              |
| Central Asia                   | 278                     | 2259                        | ...                        | ...                          |
| USSR in 1925 borders           | 21242                   | 140679                      | -7447                      | 133232                       |

**Sources:**

Area: Figures in square versts given by IRI RAN (1995), pp. 11-15, converted at 1.0668 km per verst.

Population: As Tables B-1 and B-2.

**Notes:**

\* West: The provinces of Bessarabia, Vilno, Vitebsk (33%), Volyn (50%), Grodno, Kovno, Kurliand, Lifliand, Minsk (33%), Podolsk, Pskov (10%), Kholm, Estliand, and insignificant parts of Arkhangel and Petrograd. Caucasus: the provinces of Kars, Batumi (50%), and insignificant parts of Erivan.

\*\* Central Asia: Khiva and Bukhara.

**Table 3. Population of Russia and the USSR, 1913 to 1928**

|   | Official<br>figures<br>Jan. 1<br>(A) | Corrected for double-<br>counting, border changes<br>and migration |            |            | Territory under<br>government<br>control |            |
|---|--------------------------------------|--|------------|------------|--|------------|
|   |                                      | Jan. 1   | Apr. 1     | July 1     | Jan. 1                                   | July 1     |
|   |                                      | (B)  | (C)        | (D)        | (E)                                      | (F)        |
|   | <i>000</i>                           | <i>000</i>   | <i>000</i> | <i>000</i> | <i>000</i>                               | <i>000</i> |
| <i>Russian Empire exc. Finland and Poland</i> |                                      |  |            |            |  |            |
| 1913  | 158942                               | 150391   | ...        | 152259     | 150391                                   | 152259     |
| 1914  | 162890                               | 154127   | ...        | 155188     | 154127                                   | 155188     |
| 1915  | 166658                               | 156249   | ...        | 156050     | 156249                                   | 150620     |
| 1916  | 169290                               | 155851   | ...        | 155329     | 144991                                   | 144469     |
| 1917  | ...                                  | 154807   | ...        | 154432     | 143948                                   | 143573     |
| 1918  | ...                                  | 154057   | ...        | ...        | ...                                      | ...        |
| <i>Soviet interwar territory</i>              |                                      |  |            |            |  |            |
| 1913  | ...                                  | 133232   | 134015     | 134798     | ...                                      | ...        |
| 1914  | ...                                  | 136363   | 137073     | 137783     | ...                                      | ...        |
| 1915  | ...                                  | 139203   | 139787     | 140371     | ...                                      | ...        |
| 1916  | ...                                  | 141539   | 142087     | 142634     | ...                                      | ...        |
| 1917  | ...                                  | 143729   | 143943     | 144157     | ...                                      | ...        |
| 1918  | ...                                  | 144585   | 144146     | 143707     | ...                                      | ...        |
| 1919  | ...                                  | 142829   | 142390     | 141950     | ...                                      | ...        |
| 1920  | ...                                  | 141072   | 140070     | 139068     | ...                                      | ...        |
| 1921  | ...                                  | 139068   | 138722     | 138376     | ...                                      | ...        |
| 1922  | ...                                  | 137684   | 137720     | 137756     | ...                                      | ...        |
| 1923  | ...                                  | 137827   | 138419     | 139012     | ...                                      | ...        |
| 1924  | ...                                  | 140196   | 140938     | 141680     | ...                                      | ...        |
| 1925  | ...                                  | 143163   | 143818     | 144472     | ...                                      | ...        |
| 1926  | ...                                  | 145781   | 146500     | 147219     | ...                                      | ...        |
| 1927  | ...                                  | 148656   | 149398     | 150139     | ...                                      | ...        |
| 1928  | ...                                  | 151622   | 152388     | 153155     | ...                                      | ...        |
| 1929  | ...                                  | 154687   | ...        | ...        | ...                                      | ...        |

(Table 3 cont.) Sources:

A and B. Figures for 1913 to 1918, official and after adjustment, are from Tables B-1, column H, and B-2, columns H and K. Figures for 1920 to 1928 are from Andreev, Darskii, and Khar'kova (1993, p. 119), using their high-mortality series for 1920 through 1922. For discussion and our own corrections, see Appendix B.

C and D. The July 1 figure, which we use for the calendar year average, is found as the average of the January 1 figures for the current and following years. The April 1 figure, used for the economic year (October to September) average, is the average of the January and July figures for the current year.

E and F. Figures are adjusted for territory held by the Imperial government.

Note:

In this and following tables, numbers that are interpolated or extrapolated are shown in italics.

Table 4. Net national income of Russia and USSR: million rubles at 1913 market prices and percent

|  | Industry         |                 |                 |                   |                |                   |                      | Total | Percent<br>of 1913 |
|--|------------------|-----------------|-----------------|-------------------|----------------|-------------------|----------------------|-------|--------------------|
|  | Agri-<br>culture | Large-<br>scale | Small-<br>scale | Con-<br>struction | Trans-<br>port | Other<br>Civilian | Military<br>Services |       |                    |
| <i>Russian Empire exc. Finland and Poland</i>                            |                  |                 |                 |                   |                |                   |                      |       |                    |
| 1913   | 8288             | 2793            | 1212            | 956               | 972            | 4263              | 243                  | 18727 | 100.0%             |
| 1914   | 7643             | 2969            | 1188            | 971               | 1033           | 4138              | 410                  | 18352 | 98.0%              |
| 1915   | 7795             | 3099            | 950             | 714               | 1243           | 4137              | 1095                 | 19034 | 101.6%             |
| 1916   | 6709             | 2631            | 1069            | 557               | 1329           | 3686              | 1553                 | 17535 | 93.6%              |
| 1917   | 6575             | 2046            | 950             | 400               | 776            | 3222              | 1362                 | 15331 | 81.9%              |
| 1918   | 5128             | 876             | 891             | 137               | ...            | ...               | ...                  | ...   | ...                |
| 1919   | 4464             | 463             | 594             | 104               | ...            | ...               | ...                  | ...   | ...                |
| <i>Russian Empire (exc. Finland and Poland) under government control</i> |                  |                 |                 |                   |                |                   |                      |       |                    |
| 1913   | 8288             | 2793            | 1212            | 956               | 972            | 4263              | 243                  | 18727 | 100.0%             |
| 1914   | 7643             | 2969            | 1188            | 971               | 1033           | 4138              | 410                  | 18352 | 98.0%              |
| 1915   | 7301             | 3099            | 950             | 714               | 1243           | 3989              | 1095                 | 18392 | 98.2%              |
| 1916   | 6198             | 2631            | 1069            | 557               | 1329           | 3533              | 1553                 | 16870 | 90.1%              |
| 1917   | 6054             | 2046            | 950             | 400               | 776            | 3065              | 1362                 | 14653 | 78.2%              |
| <i>Soviet interwar territory</i>   |                  |                 |                 |                   |                |                   |                      |       |                    |
| 1913   | 7292             | 2408            | 981             | 878               | 833            | 3835              | 213                  | 16439 | 100.0%             |
| 1914   | 6710             | 2560            | 962             | 891               | 859            | 3708              | 360                  | 16050 | 97.6%              |
| 1915   | 6931             | 2671            | 769             | 655               | 1088           | 3750              | 961                  | 16825 | 102.3%             |
| 1916   | 5723             | 2268            | 866             | 512               | 1198           | 3270              | 1363                 | 15199 | 92.5%              |
| 1917   | 5838             | 1764            | 769             | 367               | 658            | 2908              | 1196                 | 13500 | 82.1%              |
| 1918   | 4464             | 755             | 721             | 126               | 175            | 1932              | 62                   | 8236  | 50.1%              |
| 1919   | 3878             | 399             | 481             | 96                | 222            | 1571              | 372                  | 7019  | 42.7%              |
| 1920   | 3653             | 421             | 433             | 62                | 145            | 1459              | 724                  | 6897  | 42.0%              |
| 1921   | 3282             | 384             | 481             | 60                | 178            | 1357              | 535                  | 6277  | 38.2%              |
| 1922   | 3927             | 533             | 529             | 113               | 229            | 1650              | 273                  | 7254  | 44.1%              |
| 1922/23  | 4527             | 746             | 577             | 178               | 298            | 1958              | 121                  | 8406  | 51.1%              |
| 1923/24  | 5891             | 973             | 702             | 242               | 396            | 2539              | 97                   | 10839 | 65.9%              |
| 1924/25  | 7236             | 1509            | 813             | 401               | 521            | 3243              | 97                   | 13819 | 84.1%              |
| 1925/26  | 7613             | 2152            | 894             | 614               | 728            | 3715              | 97                   | 15812 | 96.2%              |
| 1926/27  | 7756             | 2442            | 981             | 744               | 824            | 3945              | 97                   | 16788 | 102.1%             |
| 1927/28  | 8079             | 2852            | 981             | 881               | 887            | 4234              | 97                   | 18010 | 109.6%             |

(Table 4 cont.) Sources:

For 1913, the starting point for national income and value added by sector of origin on both Russian and Soviet territory is Table C-1, but the Empire territory here includes Poland, which we deduct from national income as a whole in proportion to its population (Table 2) multiplied by the relative income coefficient of 1.0852. We assume that Poland was at least as wealthy, relative to the rest of the Empire, as all western provinces were, relative to the provinces that formed the Soviet Union. Comparing the two territories shown in Table C-1, it is easily found that, in the western provinces of the empire in 1913, average incomes were 132.3 rubles, compared with 122.0 rubles on Soviet territory. Thus, average incomes of the western provinces exceeded those on Soviet territory by a factor of 1.0852.

Value added by other civilian sectors (forestry, fishing and hunting, communications, trade, and other civilian services) in 1913 is found as the residual after value added by agriculture, large and small industry, construction, transport, and military services is deducted from national income.

Figures for subsequent years are then interpolated on aggregate index numbers or other series as follows: agriculture, Table C-2 (total); large-scale industry, Table C-4 (total); small-scale industry, Table C-5 (column D); construction, Table C-7 (total); transport, Table C-8 (rail and waterways, total); military services, Table C-11 (column D). An exception is the 1927/28 figure for small industry, missing from the source; we assume that, in the deteriorating conditions of the late 1920s, small industry ceased to grow.

For years after 1913, other civilian sectors are interpolated on the sum of agriculture, large and small industry, construction, and transport.

Table 5. Net national income of Russia and USSR: rubles per head in 1913 market prices

|  | National income per head |                           |                  |                  |                           |                  |
|--|--------------------------|---------------------------|------------------|------------------|---------------------------|------------------|
|  | Rubles                   |                           |                  | Per cent of 1913 |                           |                  |
|  | Goods                    | Goods                     | Goods            | Goods            | Goods                     | Goods            |
|  | and services             | and non-military services | from agriculture | and services     | and non-military services | from agriculture |
| (A)  | (B)                      | (C)                       | (A)              | (B)              | (C)                       |                  |
| <i>Russian Empire exc. Finland and Poland</i>                                      |                          |                           |                  |                  |                           |                  |
| 1913   | 123.0                    | 121.4                     | 54.4             | 100.0%           | 100.0%                    | 100.0%           |
| 1914   | 118.3                    | 115.6                     | 49.3             | 96.2%            | 95.2%                     | 90.5%            |
| 1915   | 122.0                    | 115.0                     | 50.0             | 99.2%            | 94.7%                     | 91.8%            |
| 1916   | 112.9                    | 102.9                     | 43.2             | 91.8%            | 84.8%                     | 79.3%            |
| 1917   | 99.3                     | 90.5                      | 42.6             | 80.7%            | 74.5%                     | 78.2%            |
| <i>Russian Empire territory (exc. Finland and Poland) under government control</i> |                          |                           |                  |                  |                           |                  |
| 1913   | 123.0                    | 121.4                     | 54.4             | 100.0%           | 100.0%                    | 100.0%           |
| 1914   | 118.3                    | 115.6                     | 49.3             | 96.2%            | 95.2%                     | 90.5%            |
| 1915   | 122.1                    | 114.8                     | 48.5             | 99.3%            | 94.6%                     | 89.1%            |
| 1916   | 116.8                    | 106.0                     | 42.9             | 94.9%            | 87.3%                     | 78.8%            |
| 1917   | 102.1                    | 92.6                      | 42.2             | 83.0%            | 76.3%                     | 77.5%            |
| <i>Soviet interwar territory</i>   |                          |                           |                  |                  |                           |                  |
| 1913   | 122.0                    | 120.4                     | 54.1             | 100.0%           | 100.0%                    | 100.0%           |
| 1914   | 116.5                    | 113.9                     | 48.7             | 95.5%            | 94.6%                     | 90.0%            |
| 1915   | 119.9                    | 113.0                     | 49.4             | 98.3%            | 93.9%                     | 91.3%            |
| 1916   | 106.6                    | 97.0                      | 40.1             | 87.4%            | 80.6%                     | 74.2%            |
| 1917   | 93.6                     | 85.4                      | 40.5             | 76.8%            | 70.9%                     | 74.9%            |
| 1918   | 57.3                     | 56.9                      | 31.1             | 47.0%            | 47.2%                     | 57.4%            |
| 1919   | 49.4                     | 46.8                      | 27.3             | 40.5%            | 38.9%                     | 50.5%            |
| 1920   | 49.6                     | 44.4                      | 26.3             | 40.7%            | 36.9%                     | 48.6%            |
| 1921   | 45.4                     | 41.5                      | 23.7             | 37.2%            | 34.5%                     | 43.8%            |
| 1922   | 52.7                     | 50.7                      | 28.5             | 43.2%            | 42.1%                     | 52.7%            |
| 1922/23  | 60.7                     | 59.9                      | 32.7             | 49.8%            | 49.7%                     | 60.5%            |
| 1923/24  | 76.9                     | 76.2                      | 41.8             | 63.1%            | 63.3%                     | 77.3%            |
| 1924/25  | 96.1                     | 95.4                      | 50.3             | 78.8%            | 79.3%                     | 93.0%            |
| 1925/26  | 107.9                    | 107.3                     | 52.0             | 88.5%            | 89.1%                     | 96.1%            |
| 1926/27  | 112.4                    | 111.7                     | 51.9             | 92.1%            | 92.8%                     | 96.0%            |
| 1927/28  | 118.2                    | 117.5                     | 53.0             | 96.9%            | 97.7%                     | 98.0%            |

## Sources:

Population: for calendar years, the July 1 figure given in Table 2 and for economic years the April 1 figure.

National income: Table 4.

Income per head: national income, divided by population.

**Table 6. Russian and Soviet economic and demographic losses in four crises**

|                                  | Decline over    |             |           | Premature deaths, million |            |           |
|----------------------------------|-----------------|-------------|-----------|---------------------------|------------|-----------|
|                                  | period, percent |             |           | Per cent                  |            |           |
|                                  | Total           | Personal    | Years     | Million                   | of initial | Years     |
|                                  | national        | consumption |           |                           | popul-     |           |
|                                  | income          | per head    |           |                           | ation      |           |
| Great War-Civil War              | -62%            | -56%        | (1913-21) | 13.0                      | 8.4%       | (1914-23) |
| Great Breakthrough               | 1%              | -14%        | (1930-32) | 6.0                       | 3.8%       | (1932-34) |
| Great Terror-Great Patriotic War | -21%            | -44%        | (1937-42) | 28.6                      | 15.1%      | (1937-47) |
| Post-Soviet transition           | -38%            | -38%        | (1990-94) | 0.1-3.8                   | 0.1-2.6%   | (1991-98) |

Sources:

*Economic losses*

1913-1921: Table 5 (national income per head at 1913 prices and, for the change in consumption, national income per head from agriculture.

1930-1932: National income per head at 1990 "international" dollars is by Angus Maddison at <http://www.ggd.net/maddison>. Consumption per head is from Allen (2003, p. 147).

1937-1943: Total real GDP, percent of 1937, is given by Harrison (1996, p. 93) for government-controlled territory only, which was enlarged by annexations in 1939/40 and then reduced (by much more) by invasion and occupation in 1941 and 1942. Household consumption combines the decline estimated for 1937 to 1940 by Bergson (1961, p. 252 with that estimated for 1940 to 1943 by Harrison (1996, p. 104), both at 1937 prices. The wartime low point for household consumption was most likely 1942, but we have no population figure for that year, so we use 1943 instead.

1990-1994: National income per head at 1990 "international" dollars is by Maddison at <http://www.ggd.net/maddison>. Consumption change is for "average money incomes" deflated by consumer prices in Goskomstat Rossii (1995, p. 77).

*Demographic losses*

1914-1923: For sources and methods, see the text and Table B-3.

1932-1934: The mid-point of the 5.5 to 6.5 million range given by Davies and Wheatcroft (2004, p. 401).

1937-1947: The official figure for excess war deaths in 1941 to 1945 is now 26.6 million (Andreev, Darskii, and Khar'kova 1990). As Ellman and Maksudov (1994) it may (or more likely may not) include roughly 2.7 million wartime emigrants. To the 26.6 million we add 950,000 as a lower limit on deaths in the Great Terror of 1937/38 (Ellman 2002, p. 1154), plus one million for the lower limit on deaths from famine in 1946/47 Ellman (Ellman 2000a, p. 616).

1990-1998: Our lower limit is the 100,000 violent deaths in regional wars and ethnic conflicts, cited by Ellman (2000b). The upper limit is found by adding 3.7 million excess deaths attributed to transitional reforms by UNICEF (2000, p. 51). The upper and lower limits are based on entirely opposed assumptions and should not be averaged. For their relative merits see discussion in the text. In this crisis, unlike others, Russia received substantial net immigration of more than 13 millions by the year 2000, including many from the "near abroad" (UN 2002, p. 3).

## Appendix A. National Income: Past Estimates\*

The Russian literature starts from Prokopovich (1918a,b). His estimates of Russian Empire GDP by sector of origin in 1913, based on changes in industry and agriculture over the war years, shown in Table A-1, formed the starting point for all future scholars.

Soviet statisticians and economists were mainly interested in estimating the depth of the wartime crisis and the rate of recovery from it. There were a number of attempts to produce national income calculations for particular years. Litoshenko (1925, 1927) elaborated on 1922/23 and 1923/24 (Table A-2). He was the only one to work from “social tables,” aggregating the personal incomes of socially defined sub-groups of the population deriving incomes from the sphere of material production – industry, agriculture, construction, and intermediate transport and distribution.

Other scholars worked on a sector-of-origin basis, as we do, but generally restricting their scope to industry and agriculture alone. Thus, Gukhman (1928) produced an estimate for 1922/23 (Table A-3), based on the material production of industry and agriculture. The practice of basing national income estimates for our period on industry and agriculture alone continued through the Soviet period. Various Soviet-era estimates on this basis are shown side by side in Table A-4.

There were also important sectoral investigations in the 1920s such as that of Vorob’ev (1923) who contributed a study of large-scale industry during the Great War, based on the 1918 industrial census. Two others were suppressed at the time but survived to be published many years later: a general index of large-scale industry over the forty years from 1887 to 1927 by Kafengaus (1994) and a study of agriculture by Litoshenko (2001).

In the early years of Soviet rule, national accountants were actively engaged into data gathering issues as well as into their analysis, running to many statistical volumes published by the Soviet central statistical agency (TsSU) and the production branch ministries (VSNKh, responsible for industry, and others). The TsSU, with its local branches, was the leading organization responsible for data collection. Established in 1918, it combined two main lines of pre-revolutionary statistics – the Central Statistical Committee attached to the Ministry of Internal Affairs, and the local *zemstvo* statistical agencies – into a unified hierarchy. In the early years of Soviet rule the TsSU was a relatively independent organization dominated by pre-revolutionary specialists; up to 1925, in particular, it was headed by a prominent *zemstvo* statistician, P. I. Popov. Early Soviet statistical volumes described the data-gathering methodologies and explicitly discussed data limitations where appropriate. Both Russian and Western scholars view the official statistics of the 1920s, especially from the first half of the decade, as of generally high quality (for more detail see Wheatcroft and Davies 1994a).

The emergence of Stalin’s dictatorship in 1929 reduced dramatically the number of statistical publications and put a stop to independent studies on this theme. With one

---

\* Not for publication.

outstanding exception, Soviet specialists turned away from the problem of national income to the mobilization of industry and labor (Sidorov 1973 illustrates this at its best).

The exception was Al'bert Vainshtein (1960, 1969), who resumed his work on the topic after returning from more than twenty years in the Gulag and internal exile. Starting from Russia's national wealth in 1914, Vainshtein used his knowledge as an insider to explore the quality of Russian Empire statistics and review previous attempts on Russian and Soviet national income. He proposed adjustments for border changes from the Russian Empire to the Soviet Union, and offered corrections of the population and livestock figures. The population correction was further investigated by later demographers such as Sifman (1977).

Reviving the subject after the Soviet collapse, Poletaev (1998) provided a systematic review of this literature; Poletaev and Savel'eva (2001) compared two crises, one in the 1990s and the other in the 1920s.

The Western literature starts again from Prokopovich (1931) who, exiled from Russia, made his estimates available in English. Thereafter, western scholars have divided their attention between the periods before and after 1917. As for the earlier period, the performance of the Russian economy in World War I has been surveyed by Gatrell and Harrison (1993) and Gatrell (2005). Table A-5 shows the latter's revised estimate of the trend in Russia's national income, based on production in the material production sectors, through 1917. For the period after 1917, worthy of note is the estimate provided by Warren Nutter (1963) for three production sectors in 1920 and 1928 relative to 1913 (Table A-6).



**Table A-1. Prokopovich's national income: Russia, 1914/15 to 1917/18, percent of 1913/14**

|         | Agri-<br>culture | Industry | National<br>income |
|---------|------------------|----------|--------------------|
| 1914/15 | 100.5%           | 100.0%   | 100.0%             |
| 1915/16 | 98.3%            | 92.6%    | 96.5%              |
| 1916/17 | 90.7%            | 70.9%    | 84.5%              |
| 1917/18 | 93.2%            | 50.0%    | 80.0%              |

Source: Prokopovich (1918b, p. 173).

**Table A-2. Litoshenko's national income (by social group): USSR, 1922/23 and 1923/24 in budget rubles**

|                          | Peasants | Manual<br>and non-<br>manual<br>workers | Taxpayers     |                | Other<br>urban<br>citizens | Total  |
|--------------------------|----------|---|---------------|----------------|----------------------------|--------|
|                          |          |   | Basic<br>rate | Higher<br>rate |                            |        |
| <i>1922/23</i>           |          |   |               |                |                            |        |
| Thousands                | 111624   | 12050                                   | 3761          | 1202           | 4867                       | 133504 |
| Annual income in rubles: |          |   |               |                |                            |        |
| Average                  | 49.26    | 96.08                                   | 172.1         | 555            | 62.24                      | 62     |
| Total, mn                | 5498     | 1153                                    | 654           | 666            | 305                        | 8276   |
| <i>1923/24</i>           |          |   |               |                |                            |        |
| Thousands                | 113856   | 12484                                   | 3438          | 1274           | 5102                       | 136154 |
| Annual income in rubles: |          |   |               |                |                            |        |
| Average                  | 50.38    | 126.8                                   | 172.1         | 612            | 73.12                      | 66.5   |
| Total, mn                | 5736     | 1574                                    | 598           | 780            | 373                        | 9061   |

Source: Litoshenko (1925, p. 47).

**Table A-3. Gukhman's net national income produced in industry and agriculture: USSR, 1913 and 1922/1923 in current and 1913 rubles**

|                           | Agri-<br>culture | Industry        |              |     |       | Total | Total |
|---------------------------|------------------|-----------------|--------------|-----|-------|-------|-------|
|                           |                  | Large-<br>scale | Small-scale: |     | Total |       |       |
|                           |                  | Urban           | Rural        |     |       |       |       |
| <i>In 1913 prices:</i>    |                  |                 |              |     |       |       |       |
| 1913                      | 8620             | 2657            | 430          | 326 | 756   | 3413  | 12033 |
| 1922/23                   | 6257             | 821             | 114          | 176 | 290   | 1111  | 7368  |
| <i>In current prices:</i> |                  |                 |              |     |       |       |       |
| 1922/23                   | 4676             | 1100            | 148          | 232 | 380   | 1480  | 6156  |

Source: Gukhman (1928, p. 51).

**Table A-4. Various Soviet estimates of national income produced in agriculture and industry (percent of 1913)**

|      | Groman<br>1927<br>(A) | Varzar<br>1929<br>(B) | Gosplan<br>1929<br>(C) | TsUNKhU<br>1939<br>(D) | TsSU<br>1957<br>(E) |
|------|-----------------------|-----------------------|------------------------|------------------------|---------------------|
| 1913 | 100                   | 100                   | 100                    | 100                    | 100                 |
| 1914 | 96                    | 91                    | 99                     | ...                    | ...                 |
| 1915 | 103                   | 89                    | 102                    | ...                    | ...                 |
| 1916 | 103                   | 82                    | 103                    | ...                    | ...                 |
| 1917 | 83                    | 72                    | 85                     | 76                     | 75                  |
| 1918 | 61                    | ...                   | 71                     | ...                    | ...                 |
| 1919 | 52                    | ...                   | 54                     | ...                    | ...                 |
| 1920 | 47                    | ...                   | 49                     | 40                     | 40                  |
| 1921 | 45                    | ...                   | 47                     | 38                     | 38                  |
| 1922 | 61                    | ...                   | 44                     | ...                    | 57                  |
| 1923 | 73                    | ...                   | 59                     | ...                    | ...                 |
| 1924 | 87                    | ...                   | 67                     | ...                    | ...                 |
| 1925 | 102                   | ...                   | 77                     | 80                     | 80                  |
| 1926 | ...                   | ...                   | 97                     | 103                    | 103                 |
| 1927 | ...                   | ...                   | 105                    | 110                    | 110                 |
| 1928 | ...                   | ...                   | 111                    | 119                    | 119                 |

Sources:

A. Groman (1927, p. 47).

B, C, D, and E. Compiled by Poletaev (1998: unpublished appendix). TsUNKhu (Central Administration for National Economic Accounts) was the acronym for the Soviet official statistical agency from 1930 to 1940; before and after these dates it was known as TsSU (Central Statistical Administration).

**Table A-5. Gattrell's national income: Russia, 1914 to 1917, percent of 1913**

|      | Industry       |                | Agri-<br>culture | Forestry | Trade | Transport | Con-<br>struction | Weighted<br>total |
|------|----------------|----------------|------------------|----------|-------|-----------|-------------------|-------------------|
|      | Large<br>scale | Small<br>scale |                  |          |       |           |                   |                   |
| 1914 | 101%           | 98%            | 100%             | 79%      | 84%   | 73%       | 96%               | 95%               |
| 1915 | 111%           | 78%            | 110%             | 59%      | 68%   | 71%       | 100%              | 96%               |
| 1916 | 104%           | 88%            | 90%              | 31%      | 50%   | 43%       | 81%               | 80%               |
| 1917 | 76%            | 78%            | 87%              | 18%      | 37%   | 29%       | 68%               | 68%               |

Source: Gattrell (2005, p. 241).

**Table A-6. Nutter's production indexes: USSR, 1920 and 1928, per cent of 1913**

|      | Agri-<br>culture | Industry | Transport |
|------|------------------|----------|-----------|
| 1920 | 64%              | 20%      | 22%       |
| 1928 | 118%             | 102%     | 106%      |

Source: Nutter (1963, p. 165).

## Appendix B. Population

Our population series falls into two subperiods, 1913 to 1918 and 1920 to 1928. For 1919, which cannot be separately reconstructed, we interpolate between 1918 and 1920.

### *1913 to 1918*

Table B-1 reports official figures for the population of the Russian Empire and its main subregions from 1913 through 1916. Table B-2 reports our reconstruction of the figures and their extrapolation through 1918.

Table B-2 is divided horizontally into two sections, showing the territories of the Russian empire (excluding Poland and Finland) and the interwar Soviet Union respectively. In the upper section official figures (column A, drawn from Table B-1), provide the starting point. Reading across, the first adjustment (column D) is for internal migration.

The Imperial registration of births and deaths was of sufficiently high quality, but officials failed to account correctly for rural-urban migration. They double counted migrants, once in the place of origin and again at their destinations. A census could correct for this mistake, but the only Empire census was conducted in 1897. The double counting accumulated each year from that time. In column C we adjust the 1914 population for this error, following Sifman (1977) who, starting from the 1897 population figure, accounts annually for fertility, mortality, and net migration over the next two decades. Vainshtein (1960) previously reviewed various attempts to estimate the true numbers. Sifman's adjustment is close to the mid-point of the range of these corrections. In contrast to Sifman, other authors rarely reported details of their correction procedures. Volkov's (1930) is the most transparent, but does not account for net external migration and does not correct official figures of the population of the Empire's periphery. Prokopovich's (1918a) downward adjustment is too large, because he applied it to the entire country, including Siberia where there was no double-counting.

To estimate annual figures for 1913 and 1915 to 1918, we apply Boiarskii's (1948) net growth rate to the 1914 population figure and adjust for cumulative war losses and net migration on the basis of Volkov (1930) (columns E, F and G respectively). Boiarskii calculated the rate of natural increase for the Soviet interwar territory only; we assume that the two territories followed the same path. Column J reports the results.

In working on this basis, we reject two other options. One would be to continue with the official figures, corrected à la Sifman. Given the government's wartime difficulties, including the loss of some territories and the irregular information from the rest, the figures are just too unreliable. Another option would be to use Volkov's (1930) population estimates. But these rely too heavily on the 1916 and 1917 agricultural censuses, which covered only the rural population, requiring many assumptions and adjustments to arrive at the total population. So, we reject this too. We do make use of Volkov's data for migration and military losses, which appear to be well founded. A separate argument for our methodology is that at least it is free of rural-urban migration bias, since it accounts for wartime migration flows directly.

Table B-2 (columns K,L, and M) reports our estimations for the territory under direct control of the tsarist government. Starting from the Empire territory, we subtract the population on the

periphery occupied by the Central Powers, adding back the inward flow of refugees from these territories.

The lower section of Table B-2 shows our adjustments to Soviet interwar territory. Again, we start from the official Empire population of 1914. We first subtract official populations of the territories of the future independent states (column B), summing figures for the provinces that left the empire in whole (Note 1) and, weighted appropriately from Vainshtein (1960), in part (Note 2). An “official” figure for the 1914 population within 1922 Soviet borders results (column C).

We then repeat the correction for double counting (column D) and extrapolate for the natural increase (column E). We estimate military deaths (column F) from the Empire figure, excluding deaths of soldiers mobilized from the western provinces. Volkov (1930) put the share of soldiers from the future Soviet territory at 81.4 percent of the total mobilized into the army, and we apply the same share to all military deaths. For net migration (column G), we adjust the number of Russian prisoners-of-war in the same proportion, then add the number of incoming refugees from the western provinces based on Volkov (1930). Accounting for refugees changes the sign of net migration from negative to positive.

We add the populations of Khiva and Bukhara (column H), which joined the Soviet Union in 1924 and 1925. Their combined populations in 1914 were about 2.3 million people (Davies et al. 1993), and we extrapolate this figure to subsequent years on the growth of the population in the rest of the country.

The final result (column J) is the population on Soviet interwar territory from 1913 to 1918. We are unable to go beyond 1918 because the data on migration in 1918 and 1919 are substantially incomplete (Volkov 1930). The net migration in these years was large and negative because many refugees and prisoners of the war left Soviet territory.

### *1920 to 1928*

The Soviet 1926 population, based on the census conducted in December of that year, is the most reliable figure in our data. It is free of the double-counting of rural-urban migrants in the Imperial statistics. Demographers agree that this was one of the best Soviet censuses, requiring little correction. Andreev, Darskii, and Khar’kova (1993) (hereinafter ADK) adjust it upward by about 1 percent for the underreporting of Muslim females in Azerbaidzhan and Central Asia and of infants.

We accept this revision, and we generally follow the ADK reconstruction of population for 1923 to 1928.

For 1920 through 1922, ADK offer three variants based on high, low, and medium mortality rate in the famine of 1921/22. They express no preference between the three, noting that the question awaited further investigation. We adopt their “high” mortality series on the basis of Adamets (2003), who conducted a special study on mortality during the Civil War and famine. Adamets did not reconstruct the population himself. He calculated a mortality index in two variants: from available data for particular regions, and from mortality tables, simulated using the age compositions of 1926 and 1910 respectively. His regional mortality index is supportive of the “high” ADK mortality assumptions. His simulated mortality tables produce an even higher

estimate of 17 million excess deaths between 1918 and 1922. But this relies on many fragile assumptions, and we find it implausible.

We apply one correction to ADK ourselves. This concerns the figure for 1920, which we inflate by 1.8 million. This corrects a misprint, originally in Maksudov (1989), which ADK cite as their source on the White emigration. In his text (p. 185) Maksudov puts the White emigration between 1920 and 1922 at two million but in the relevant table (p. 202) he reports the annual figures (in millions) as 0.9, -1, and -0.1; the first figure is missing a minus sign. ADK reproduce this misprint in their book (p. 14).

**Table B-1. Official population of the Russian Empire, 1913 to 1916**

|      | The Russian Empire, exc. Finland and Poland |          |         |                                  |          |        |                                       |              |                          |
|------|---|----------|---------|----------------------------------|----------|--------|---------------------------------------|--------------|--------------------------|
|      | European<br>Russia<br>(51 pro-<br>vinces)   | Caucasus | Siberia | Steppe<br>and<br>Central<br>Asia | Subtotal | Poland | Russian<br>Empire,<br>exc.<br>Finland | Fin-<br>land | The<br>Russian<br>Empire |
|      | (A)   | (B)      | (C)     | (D)                              | (E)      | (F)    | (G)                                   | (H)          | (J)                      |
|      | 000   | 000      | 000     | 000                              | 000      | 000    | 000                                   | 000          | 000                      |
| 1913 | 125684                                      | 12513    | 9788    | 10957                            | 158942   | 11961  | 170903                                | 3197         | 174100                   |
| 1914 | 128864                                      | 12922    | 10001   | 11104                            | 162890   | 12248  | 175138                                | 3241         | 178379                   |
| 1915 | 131797                                      | 13229    | 10378   | 11254                            | 166658   | ...    | ...                                   | 3277         | ...                      |
| 1916 | 133552                                      | 13422    | 10558   | 11758                            | 169290   | ...    | ...                                   | 3315         | ...                      |

## Sources:

1913: TsSK (1914, pp. 33-57).

1914: TsSK (1915, pp. 33-57)

1915: TsSK (1916, pp. 33-57).

1916: TsSK (1918, pp. 25-50).

## Notes:

Column E is the sum of A to D; Column G is E plus F; J is G plus H.

Table B-2. Population adjustments and corrections, 1913 to 1918

|   | Official figures                    |                             |                          |                          |                                 | Adjusted figures                           |                                       |                               |                        | Less regions occupied by Central Powers in 1915 (K) | Plus refugees from these (L) | Population under Imperial government control (M) |
|---|-------------------------------------|-----------------------------|--------------------------|--------------------------|---------------------------------|--|---------------------------------------|-------------------------------|------------------------|---|------------------------------|--|
|   | Empire exc. Poland and Finland, (A) | Territory lost, 1918/22 (B) | USSR in 1922 borders (C) | Less double counting (D) | Extrapolated from Boiarskii (E) | Cumulative military losses from Volkov (F) | Cumulative net inflow from Volkov (G) | Territory gained, 1924/25 (H) | Present population (J) |   |                              |  |
|   | 000                                 | 000                         | 000                      | 000                      | 000                             | 000  | 000                                   | 000                           | 000                    | 000   | 000                          | 000  |
| <i>Russian Empire exc. Finland and Poland</i> |                                     |                             |                          |                          |                                 |  |                                       |                               |                        |   |                              |  |
| 1913  | 158942                              | ...                         | ...                      | -8551                    | 150391                          | ...  | ...                                   | ...                           | 150391                 | ...   | ...                          | ...  |
| 1914  | 162890                              | ...                         | ...                      | -8763                    | 154127                          | -255                                       | -166                                  | ...                           | 154127                 | ...   | ...                          | ...  |
| 1915  | ...                                 | ...                         | ...                      | ...                      | 156670                          | -951                                       | -981                                  | ...                           | 156249                 | ...   | ...                          | 156249   |
| 1916  | ...                                 | ...                         | ...                      | ...                      | 157782                          | -1675                                      | -1568                                 | ...                           | 155851                 | -11752  | 893                          | 144991   |
| 1917  | ...                                 | ...                         | ...                      | ...                      | 158050                          | -1998                                      | -1553                                 | ...                           | 154807                 | -11772  | 2413                         | 145449   |
| 1918  | ...                                 | ...                         | ...                      | ...                      | 157608                          | ...  | ...                                   | ...                           | 154057                 | -11739  | 2778                         | 145096   |
| <i>Soviet interwar territory</i>              |                                     |                             |                          |                          |                                 |  |                                       |                               |                        |   |                              |  |
| 1913  | 158942                              | -20522                      | 138420                   | -7447                    | 130973                          | ...  | ...                                   | 2259                          | 133232                 | ...   | ...                          | ...  |
| 1914  | 162890                              | -21204                      | 141686                   | -7623                    | 134063                          | -208                                       | 794                                   | 2300                          | 136363                 | ...   | ...                          | ...  |
| 1915  | ...                                 | ...                         | ...                      | ...                      | 136275                          | -774                                       | 2685                                  | 2342                          | 139203                 | ...   | ...                          | ...  |
| 1916  | ...                                 | ...                         | ...                      | ...                      | 137243                          | -1364                                      | 5188                                  | 2385                          | 141539                 | ...   | ...                          | ...  |
| 1917  | ...                                 | ...                         | ...                      | ...                      | 137476                          | -1626                                      | 6647                                  | 2429                          | 143729                 | ...   | ...                          | ...  |
| 1918  | ...                                 | ...                         | ...                      | ...                      | 137091                          | ...  | ...                                   | 2473                          | 144585                 | ...   | ...                          | ...  |

## Sources:

- A. Table B-1, column E.
- B. The sum of totals living in provinces that left the Empire in whole (from Note 1, below) or part (from Note 2).
- C. The sum of A and B.
- D. Column A (for the Russian Empire territory) or C (for Soviet interwar territory) is deflated by 5.38 percent to correct for prewar double-counting on the authority of Sifman (1977), as described in the text.
- E. Figures for 1913 and 1914 are the same as in column A. Figures for 1915 onward are calculated by applying Boiarskii's (0000) net reproduction rate to the population in the previous year.
- F. Calculated from Volkov (1930, pp. 54-68) as the sum of military losses of all kinds.
- G. Calculated from Volkov (1930, pp. 69-77) as the net inflow of migrants, refugees, and prisoners of war.
- H. Khiva and Bukhara: Population of 1914 is from Vainshtein (1960, pp. 453) and for adjacent years is assumed to have been growing at 1.83% annually, the average net reproduction rate in Turkestan for 1900-1913 (Volkov 1930, p.40).
- J. The sum of E through H.
- K. In 1915 the Central Powers occupied the provinces of Kurland, Kovno, Vilnius, Grodno, Rovno (50%), Minsk (50%), and Kholm. Official figures (as Table B-1) for the populations of these provinces in 1914 (as Table B-1) are extrapolated (as column E) through 1918.
- L. War refugees from the occupied regions (as column G) added to the population under Imperial government control.
- M. The sum of J through L.

Table B-2, note 1. Populations of provinces leaving the Russian Empire in whole

|      | Bess-<br>arabia | Vilno      | Grodno     | Kovno      | Kur-<br>liand | Lif-<br>liand | Podolsk    | Kholm      | Est-<br>liand | Kars       | Total      |
|------|-----------------|------------|------------|------------|---------------|---------------|------------|------------|---------------|------------|------------|
|      | <i>000</i>      | <i>000</i> | <i>000</i> | <i>000</i> | <i>000</i>    | <i>000</i>    | <i>000</i> | <i>000</i> | <i>000</i>    | <i>000</i> | <i>000</i> |
| 1913 | 2588            | 2020       | 2020       | 1842       | 783           | 1493          | 3955       | 1068       | 492           | 390        | 16652      |
| 1914 | 2657            | 2076       | 2048       | 1857       | 798           | 1744          | 4057       | 1088       | 507           | 396        | 17229      |
| 1915 | 2687            | 2083       | 2094       | 1871       | 812           | 1779          | 4128       | 1088       | 513           | 355        | 17409      |
| 1916 | 2699            | 2083       | 2094       | 1871       | 812           | 1795          | 4191       | 1088       | 517           | 410        | 17561      |

Table B-2, note 2. Populations of provinces leaving the Russian Empire, in part

|  | Volyn      | Minsk      | Vitebsk    | Pskov      | Batumi     | Total      |
|--|------------|------------|------------|------------|------------|------------|
|  | <i>000</i> | <i>000</i> | <i>000</i> | <i>000</i> | <i>000</i> | <i>000</i> |
| <i>Population living within Empire borders:</i>        |            |            |            |            |            |            |
| 1913   | 4071       | 2979       | 1896       | 1407       | 171        | ...        |
| 1914   | 4189       | 3036       | 1953       | 1425       | 183        | ...        |
| 1915   | 4242       | 3071       | 1985       | 1447       | 186        | ...        |
| 1916   | 4253       | 3095       | 1995       | 1466       | 188        | ...        |
| <i>Of which, living outside future Soviet borders:</i> |            |            |            |            |            |            |
| Per cent   | 50%        | 33%        | 33%        | 10%        | 50%        | ...        |
| 1913   | 2035       | 983        | 626        | 141        | 86         | 3870       |
| 1914   | 2095       | 1002       | 645        | 143        | 92         | 3975       |
| 1915   | 2121       | 1013       | 655        | 145        | 93         | 4027       |
| 1916   | 2127       | 1021       | 658        | 147        | 94         | 4047       |

## Sources:

Provincial populations: as Table B-1. To fill in observations missing from some columns, numbers (shown in italics) are copied from higher rows.

Proportions living outside future Soviet borders are from Vainshtein (1960, p. 455). Also left outside future Soviet borders were "insignificantly small" numbers of the residents of the Petrograd, Arkhangelsk, and Erivan provinces.



Table B-3. Population changes, 1914 to 1924: Soviet interwar territory

|                       | Popul-<br>ation<br>Jan. 1<br>(A) | Crude<br>birth<br>rate<br>(B) | Crude death rate |                 | Estimated<br>Births<br>(E) | Estimated<br>Deaths<br>(F) | Normal<br>deaths<br>(G) | World                     |
|-----------------------|----------------------------------|-------------------------------|------------------|-----------------|----------------------------|----------------------------|-------------------------|---------------------------|
|                       |                                  |                               | Option 1<br>(C)  | Option 2<br>(D) |                            |                            |                         | War I                     |
|                       |                                  |                               |                  |                 |                            |                            |                         | military<br>deaths<br>(H) |
| <i>Annual figures</i> |                                  |                               |                  |                 |                            |                            |                         |                           |
| 1914                  | 136363                           | 0.0437                        | 0.0272           | 0.0272          | 5959                       | -3709                      | -3590                   | -208                      |
| 1915                  | 139203                           | 0.0359                        | 0.0288           | 0.0288          | 4997                       | -4009                      | -3665                   | -566                      |
| 1916                  | 141539                           | 0.0271                        | 0.0254           | 0.0254          | 3836                       | -3595                      | -3726                   | -590                      |
| 1917                  | 143729                           | 0.0263                        | 0.0291           | 0.0291          | 3780                       | -4183                      | -3784                   | -262                      |
| 1918                  | 144585                           | 0.0347                        | 0.0281           | 0.0302          | 5017                       | -4063                      | -3806                   | 0                         |
| 1919                  | 142829                           | 0.0317                        | 0.0394           | 0.064           | 4528                       | -5627                      | -3760                   | 0                         |
| 1920                  | 141072                           | 0.0372                        | 0.0484           | 0.0561          | 5248                       | -6828                      | -3714                   | 0                         |
| 1921                  | 139068                           | 0.0423                        | 0.0448           | 0.0414          | 5883                       | -6230                      | -3661                   | 0                         |
| 1922                  | 137684                           | 0.0432                        | 0.043            | 0.0471          | 5948                       | -5920                      | -3625                   | 0                         |
| 1923                  | 137827                           | 0.0505                        | 0.0305           | 0.0287          | 6960                       | -4204                      | -3628                   | 0                         |
| 1924                  | 140196                           | 0.0472                        | 0.0285           | 0.0224          | 6617                       | -3996                      | -3691                   | 0                         |

*Balance over decade, Jan. 1, 1914, to Dec. 31, 1923:*

|  |        |
|--|--------|
| Births                                   | 52156  |
| Deaths                                   | -49994 |
| Normal deaths                            | -36958 |
| Excess deaths                            | -13037 |
| World War I military deaths              | -1626  |
| Other excess deaths                      | -11411 |
| Net migration (calculated as a residual) | -1671  |

## Sources:

- A. Table 3, column B.
- B. 1913-1919, Boiarskii (1948); 1920-1924, Andreev, Darskii, and Khar'kova (1991) mean fertility series.
- C. 1913-1917, Boiarskii (1948); 1918-1919, Adamets (2003) regional mortality series; 1920-1924, Andreev, Darskii, and Khar'kova (1991) high mortality series
- D. 1913-1917, Boiarskii; 1918-1924, Adamets (2003) simulated mortality series.
- E. Col. A multiplied by col. B.
- F. Col. A multiplied by col. C.
- G. Col. A multiplied by average mortality in 1914 and 1924 from cols C and D.
- H. Volkov (1930, p. 54-68).

## Appendix C. Production by Sector of Origin

Table C-1 is based on Malcolm Falkus's (1968) estimate of the shares of the main sectors in the net income of the Russian economy in 1913 within both Empire and Soviet borders. To reach his findings Falkus began from Prokopovich but found many difficulties with the latter's original estimates. To correct them he relied extensively – correctly in our view – on Gukhman.

In Falkus's work, national income was limited to material production. Material production comprises commodity production, construction, and intermediate services such as transport and trade. Final services are missing, and must be added for national income on a goods-and-services basis.

The upper part of Table C-1 belongs to Falkus; in the lower part, we adjust from material production to net national income by adding final services. For Russian Empire territory, we find final services as the residual that is left when the net material product (18.5 billion rubles, found by Falkus) is deducted from the net national product (20.3 billion rubles, found by Gregory). The 1.8 billion ruble gap amounts to 8.8 per cent of the Gregory total.

Within final services, we identify value added by military services as the cost of soldiers' maintenance in 1913, marked up by 50 per cent as an arbitrary allowance for the contribution of defense capital services. We deduct this from the final services residual to leave civilian final services.

How reliable is our estimate of the importance of civilian final services in 1913? The two aggregates that mainly form it were estimated independently, the net material product from the output side, and the net national product from the expenditure side, so there is plenty of scope for measurement error in determining the size of the gap between them. Employment data for 1913 provide a rough check. According to a Soviet handbook (TsSU 1973, p. 343), trade and other civilian services (including medicine, science, culture, and state administration) accounted for 14 per cent of total employment in 1913. Our equivalent is found in Table C-1 from the shares of trade and final civilian services under Soviet territory, which sum to 16.3 per cent. The fit is not exact, but it is close. A closer fit would not change our final results, moreover. This is because we have no independent measure of the changing output of civilian final services over time. Our only option is to allow it to follow the weighted average of the civilian series that are measured. Changing its weight would make no difference.

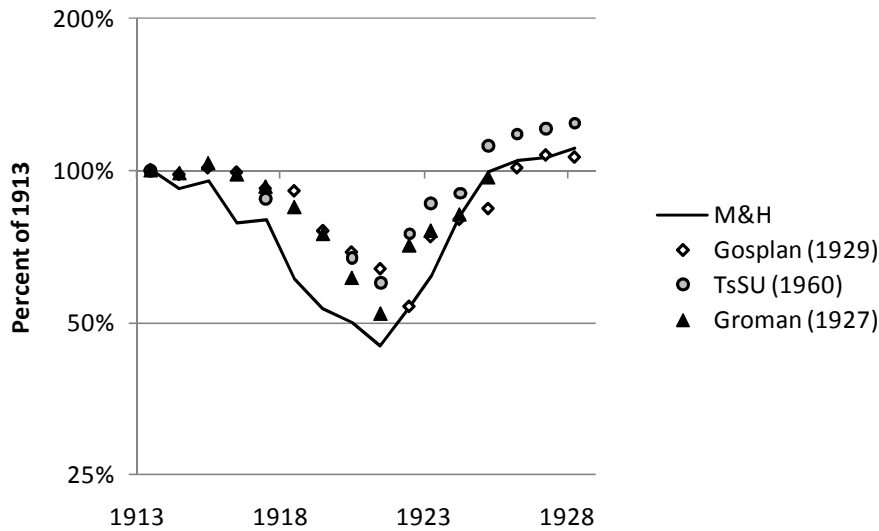
As described in the table, we adjust final services to Soviet territory in proportion to the adjustment of the net material product found by Falkus.

For subsequent years we estimate the real national income by sector of origin. Tables C-2, C-4, and C-7 to C-11 summarize the production branch data that we use. Our figures for agriculture (Table C-2) and large-scale industry (Table C-4) are based on series for agricultural and industrial commodities production in physical units, found in Appendixes D and E respectively.

Agriculture was the largest sector of the economy. It accounted for nearly half of all economic activity in 1913 and 1928, and more than half of employment. Our figures are the result of painstaking reconstruction of agricultural production, region by region and commodity

by commodity, detailed in Appendix D. In Table C-3 we compare our index with alternative Soviet-era index numbers collected by Poletaev (1998). Chart C-1 plots the aggregate indexes.

*Chart C-1. Agricultural Production on Soviet Territory, 1913 to 1928: Alternative estimates, per cent of 1913*



Source: M&H from Table C-2; other series from Table C-3.

For the mid and late 1920s, we come into agreement with the contemporaneous Gosplan index. For the war period, especially for 1916 and 1918 to 1920, our estimates fall well below the alternatives. It is difficult to identify the sources of disagreement because Soviet-era indexes after the late 1920s were typically published without detailed methodological explanation. The difference is most likely not in the original sources, set out and discussed in Appendix D, because they and we use the same. Most likely, the gap arises from the correction factors that we apply to the low-quality wartime data – particularly to grains. These are discussed in detail in Appendix D, and Table D-1 provides a full list of those used in our estimates.

For industry, data are of better quality (Davies et. al. 1993). We start with large-scale (“census”) production on Soviet territory. From Appendix E (Tables E-2 to E-13), we take 78 annual series of industrial products from Kafengaus (1994) and official figures for 1928 (TsSU 1929a). Of the 78 series, many of them incomplete, we actually make use of 60. For some of these, as they are listed in the Appendix, units are not specified or are apparently misspecified in the source. Our methodology for aggregating them is fortunately unit-free, and this saves some data that we would otherwise be unable to exploit.

The industrial classification in use before the Revolution divided industry into 11 branches; the only one on which we have no data, electricity production, was of minor importance at this time. Within each branch, each product series enters with equal weight. At the branch level in 1913 we construct value-added weights from the 1918 industrial census, which includes retrospective figures from 1913 onwards. A special study on the 1918 census (Drobizhev,

Sokolov, and Ustinov 1975, p. 43) gave it high marks for quality and argued that its results could be extrapolated to the whole country despite limited coverage (only 31 provinces). Applying value-added weights to each branch index, we obtain an index for large-scale industry (Table C-4).

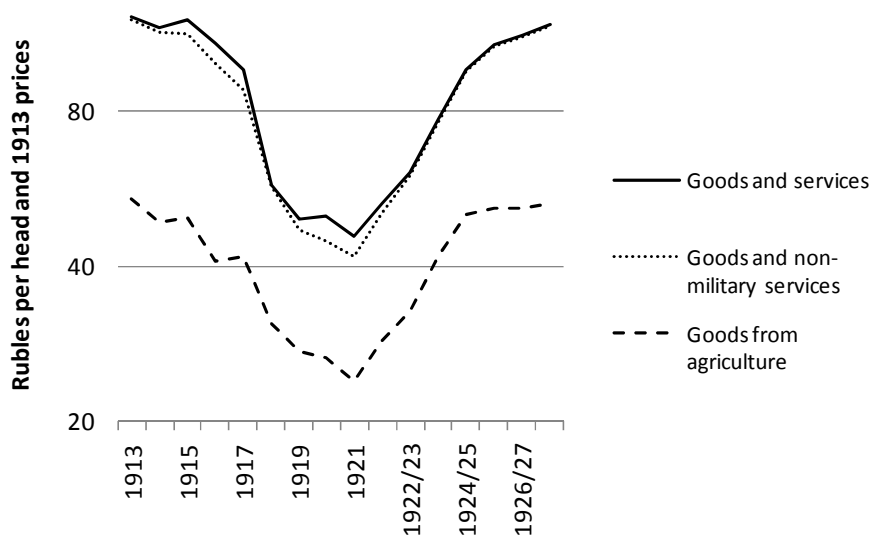
Our methodology makes no allowance for quality changes within our period. Prokopovich (1931) made the assumption that between 1913 and 1928 the average quality of Soviet industrial products declined by about one fifth. Quality change cannot have been all one way; the typical airplane of the late 1920s, for example, flew higher and faster for longer than before the war, but we do not allow for this either. Despite such omissions, our index numbers fit within the range proposed by Wheatcroft, Davies, and Cooper (1986, p. 267) based on deflated nominal values of gross output for 1926/27 and 1927/28: 2-6 per cent and then 18-23 per cent higher than in 1913.

We combine our index of large-scale industry with the only available measure of small-scale production, a Soviet official index (Table C-5), using the associated 1913 weights of large and small industry to aggregate them. The nature of small-scale production made accounting for small industry very difficult, before and after the Revolution. One might argue that the Bolshevik anti-market policy gave craftsmen additional incentives to conceal their activities from the state after the Revolution, creating a problem of growing underreporting of small production. The only available check, based on employment data, does not support this view, however. Davies (1990, pp. 45-46) concluded: "The best estimate of the number of persons engaged in small-scale industry in terms of full-time equivalents is ... 2-2¼ millions in 1913 and 1½ millions or more in 1926/27": in other words, small industry employment in 1926/27 was most likely 66 to 75 percent of the 1913 level. The Soviet official measure puts small industry output in 1926/27 at 100 percent of 1913. Thus, it is unlikely that, by relying on the latter, we have understated the contribution of small industry in the 1920s. Finally, the weight of small industry in total industrial production is itself small (6.5 percent), so an error is unlikely to have noticeable aggregate effects.

Again, we compare our figures with those of others. Tables C-5 and C-6 report a range of alternatives, and Chart C-2 plots the aggregate index numbers.

For construction (Table C-7) we rely on the production of building materials (cement, red bricks, window glass, and sawn timber). Effectively, we assume that the production of these materials equaled their intermediate consumption in the construction industry, and that the construction industry's ratio of intermediate consumption to value added remained unchanged over the period. A test of this approach would be to estimate the employment trend in this sector and compare it to that of measured output. The main difficulty is that employment in the construction sector is, in the words of Davies (1990, p. 46), "extremely uncertain territory." The problem lies in coming up with a figure for 1913, which requires extrapolation from the 1897 census. Davies concluded: "It seems likely that the right comparison is ... between Gukhman's 965,000 for 1913 and the census figure of 542,000 in December 1926," i.e. a decline by 44 percent. Our production series suggest a smaller output decline, by 15 percent up to 1926/27 year. There is a gap, but it is favorable to the performance of the Soviet economy. Moreover, the gap is not large, given the heroic guesswork underlying Gukhman's figure for 1913.

Chart C-2. Industrial Production on Soviet Territory, 1913 to 1928: Alternative estimates, per cent of 1913



Source: M&H from Table 4; other series from Table C-6.

Turning to transport (Table C-8), railways are relatively well served by official statistics. We use the dataset assembled by John Westwood (1994) in ton- and passenger-kilometers for both Empire and Soviet territory. Westwood also provides data on waterway freight traffic for widely separated benchmark years; since this element is too large to be omitted, we interpolate missing observations as best we can. Highway traffic was surely important too, but was almost entirely unmeasured. We have data only for mechanical road traffic which, although growing rapidly, remained insignificant in volume until after our period.

The coverage of trade and civilian services (Tables C-9 and C-10) is limited to employment in 1920 and the postwar years. Even employment series are lacking for the pre-Soviet period. We report these figures but we are unable to use them.

We measure military services by employment. Table C-11 shows two series for defense employment; Series A is that provided by the authoritative Correlates of War international historical database, but we believe Series B improves on this significantly from Russian sources. This uses figures on the number of soldiers from 1913 to 1921 for several months of each year from Golovin (1931, reprinted 2001) and Direktivy (1978). We infer annual averages from the monthly data. For later years we use official Soviet annual averages. The great expansion of the Russian army and navy in 1914 to 1916 is the most notable feature of Table C-11. Even at its 1920 peak, the Red Army was less than half the maximum size of the Imperial army.

It is necessary, but not easy, to account for military services of the anti-Bolshevik forces in 1918 to 1920. The sizes of the White armies are known approximately. Volkov (2002) reports figures for various armies for irregular benchmark dates. According to him, there were almost no White forces during the first half of 1918; by the end of the year the largest White army in 1918, that of Kolchak, had about 50 thousand soldiers. The Kolchak army peaked at 436

thousand in June 1919, and the Denikin army stood at about 250 thousand in July 1919. But their month-on-month variation was also large, by 25 to 80 thousand for the Kolchak forces and 30 to 82 thousand for the Denikin army. On the basis of these numbers we also make a token allowance for national insurgent forces in the Ukraine, the Caucasus, and Central Asia.

**Table C-1. National income by sector of origin, 1913: Russian and Soviet borders and million rubles**

|                                  | Russian Empire    |         | Soviet territory  |         |
|----------------------------------|-------------------|---------|-------------------|---------|
|                                  | exc. Finland      |         | Million           |         |
|                                  | Million<br>Rubles | Percent | Million<br>Rubles | Percent |
| Agriculture                      | 8969.5            | 44.3%   | 7291.6            | 44.4%   |
| Forestry                         | 1067.0            | 5.3%    | 812.0             | 4.9%    |
| Fishing and hunting              | 257.9             | 1.3%    | 244.2             | 1.5%    |
| Industry, large                  | 3022.6            | 14.9%   | 2407.5            | 14.6%   |
| Industry, small                  | 1311.1            | 6.5%    | 981.0             | 6.0%    |
| Construction                     | 1035.0            | 5.1%    | 878.0             | 5.3%    |
| Transport                        | 1051.9            | 5.2%    | 832.7             | 5.1%    |
| Communications                   | 120.9             | 0.6%    | 97.3              | 0.6%    |
| Trade                            | 1639.7            | 8.1%    | 1442.3            | 8.8%    |
| <br>                             |                   |         |                   |         |
| Net material product             | 18475.6           | 91.2%   | 14986.6           | 91.2%   |
| <br>                             |                   |         |                   |         |
| Final services                   | 1790.4            | 8.8%    | 1452.3            | 8.8%    |
| Of which:                        |                   |         |                   |         |
| Civilian services                | 1527.9            | 7.5%    | 1239.4            | 7.5%    |
| Military services                | 262.5             | 1.3%    | 212.9             | 1.3%    |
| <br>                             |                   |         |                   |         |
| Net national income              | 20266             | 100%    | 16439             | 100%    |
| Corrected mid-year population, m | 163.7             | ...     | 134.8             | ...     |
| National income per head, rubles | 123.8             | ...     | 122.0             | ...     |

Source: Rows down to "Net material product" are from Falkus (1968, p. 55).

Other rows:

Russian Empire territory: Final services are calculated as the residual when the net material product is deducted from net national income. Military services are soldiers' maintenance, 175 million rubles in 1913, from Gregory (1982, p. 247), marked up 50 per cent to account for the contribution of defense capital services. Final services, less military services, gives final civilian services.

Soviet territory: final services, civilian and military, are adjusted from Russian Empire territory in the same proportion as the net material product. Net national income is then the sum of the net material product and final services.

Populations of January 1, corrected for double counting are from Table 2, adjusted to mid-year as Table 3.

National income per head is national income divided by corrected mid-year population.

Table C-2. Agriculture, 1913 to 1928: percent of 1913

|  | Livestock   |             |             |             |             |             |                  |             | Total        |
|--|-------------|-------------|-------------|-------------|-------------|-------------|------------------|-------------|--------------|
|  | Grains      | Potatoes    | Sheep and   |             |             |             | Industrial crops |             |              |
|  |             |             | Horses      | Cattle      | goats       | Pigs        | Flax             | Cotton      |              |
|  | Tons<br>000 | Tons<br>000 | Head<br>000 | Head<br>000 | Head<br>000 | Head<br>000 | Tons<br>000      | Tons<br>000 | % of<br>1913 |
| <i>Russian Empire exc. Finland and Poland</i>                                      |             |             |             |             |             |             |                  |             |              |
| <i>Weight:</i>   | 48.3%       | 15.6%       | 7.0%        | 7.0%        | 7.0%        | 7.0%        | 4.0%             | 4.0%        | 100.0%       |
| 1913   | 100%        | 100%        | 100%        | 100%        | 100%        | 100%        | 100%             | 100%        | 100.0%       |
| 1914   | 83%         | 105%        | 104%        | 102%        | 98%         | 106%        | 67%              | 110%        | 92.2%        |
| 1915   | 94%         | 89%         | 98%         | 97%         | 102%        | 92%         | 59%              | 128%        | 94.1%        |
| 1916   | 80%         | 59%         | 92%         | 88%         | 116%        | 80%         | 58%              | 107%        | 80.9%        |
| 1917   | 82%         | 80%         | 82%         | 77%         | 92%         | 78%         | 53%              | 57%         | 79.3%        |
| 1918   | 54%         | 71%         | 79%         | 69%         | 81%         | 61%         | 49%              | 60%         | 61.9%        |
| 1919   | 45%         | 74%         | 76%         | 62%         | 70%         | 45%         | 37%              | 31%         | 53.9%        |
| <i>Russian Empire territory (exc. Finland and Poland) under government control</i> |             |             |             |             |             |             |                  |             |              |
| 1913   | 100%        | 100%        | 100%        | 100%        | 100%        | 100%        | 100%             | 100%        | 100.0%       |
| 1914   | 83%         | 105%        | 104%        | 102%        | 98%         | 106%        | 67%              | 110%        | 92.2%        |
| 1915   | 87%         | 82%         | 95%         | 93%         | 100%        | 83%         | 55%              | 128%        | 88.1%        |
| 1916   | 72%         | 50%         | 91%         | 86%         | 114%        | 76%         | 55%              | 107%        | 74.8%        |
| 1917   | 74%         | 75%         | 76%         | 72%         | 85%         | 72%         | 43%              | 57%         | 73.0%        |
| <i>Soviet interwar territory</i>   |             |             |             |             |             |             |                  |             |              |
| <i>Weight:</i>   | 50.3%       | 12.9%       | 7.1%        | 7.1%        | 7.1%        | 7.1%        | 4.2%             | 4.2%        | 100.0%       |
| 1913   | 100%        | 100%        | 100%        | 100%        | 100%        | 100%        | 100%             | 100%        | 100.0%       |
| 1914   | 83%         | 106%        | 104%        | 100%        | 98%         | 107%        | 67%              | 120%        | 92.0%        |
| 1915   | 93%         | 95%         | 99%         | 97%         | 103%        | 90%         | 57%              | 140%        | 95.0%        |
| 1916   | 79%         | 55%         | 88%         | 82%         | 82%         | 95%         | 58%              | 114%        | 78.5%        |
| 1917   | 81%         | 85%         | 79%         | 77%         | 87%         | 86%         | 58%              | 61%         | 80.1%        |
| 1918   | 53%         | 79%         | 76%         | 69%         | 77%         | 68%         | 40%              | 51%         | 61.2%        |
| 1919   | 44%         | 83%         | 74%         | 62%         | 67%         | 50%         | 30%              | 27%         | 53.2%        |
| 1920   | 38%         | 81%         | 71%         | 64%         | 50%         | 72%         | 28%              | 20%         | 50.1%        |
| 1921   | 31%         | 83%         | 65%         | 60%         | 49%         | 61%         | 31%              | 15%         | 45.0%        |
| 1922   | 53%         | 89%         | 53%         | 54%         | 39%         | 37%         | 34%              | 31%         | 53.9%        |
| 1923   | 52%         | 129%        | 56%         | 63%         | 56%         | 44%         | 33%              | 60%         | 62.1%        |
| 1924   | 58%         | 141%        | 70%         | 94%         | 97%         | 94%         | 46%              | 148%        | 80.8%        |
| 1925   | 82%         | 151%        | 74%         | 99%         | 113%        | 92%         | 40%              | 242%        | 99.2%        |
| 1926   | 86%         | 168%        | 81%         | 105%        | 120%        | 89%         | 34%              | 240%        | 104.4%       |
| 1927   | 81%         | 161%        | 86%         | 108%        | 130%        | 110%        | 31%              | 308%        | 106.4%       |
| 1928   | 80%         | 156%        | 90%         | 110%        | 135%        | 123%        | 39%              | 382%        | 110.8%       |

## Sources:

For quantities see Appendix D, Table D-2.

Weights in agricultural gross value of output at 1913 prices are taken from Gukhman (1925, pp. 130-135). Value-added weights, available from Vainshtein (1960) only for 1910 and for European Russia, do not differ greatly.

There are no figures for the cotton harvest from 1918 to 1923. Numbers are interpolated on the weighted sum of other rows, adjusted for the marked difference of trend between benchmark years.



**Table C-3. Agriculture, 1913 to 1928, alternative estimates: Soviet territory, percent of 1913**

|      | Groman | Gosplan | TsSU (1960) |       | Varzar | TsSU (1987) |      |
|------|--------|---------|-------------|-------|--------|-------------|------|
|      | (1927) | (1929)  | Total       | Crops | (1929) | Grains      | Meat |
|      | Total  | Total   |             |       | Grains |             |      |
| 1913 | 100    | 100     | 100         | 100   | 100    | 100         | 100  |
| 1914 | 99     | 98      | ...         | ...   | 82     | ...         | ...  |
| 1915 | 103    | 101     | ...         | ...   | 82     | ...         | ...  |
| 1916 | 98     | 99      | ...         | ...   | 70     | ...         | ...  |
| 1917 | 93     | 92      | 88          | 81    | 68     | 71          | 105  |
| 1918 | 85     | 91      | ...         | ...   | 68     | 65          | 102  |
| 1919 | 75     | 76      | ...         | ...   | 68     | 66          | 100  |
| 1920 | 61     | 69      | 67          | 64    | 46     | 59          | 63   |
| 1921 | 52     | 64      | 60          | 55    | 38     | 47          | 80   |
| 1922 | 71     | 54      | 75          | 75    | 49     | 66          | 54   |
| 1923 | 76     | 74      | 86          | 84    | 61     | 74          | 63   |
| 1924 | 82     | 80      | 90          | 82    | 56     | 67          | 83   |
| 1925 | 97     | 84      | 112         | 107   | 80     | 95          | 93   |
| 1926 | ...    | 101     | 118         | 114   | 85     | 100         | 102  |
| 1927 | ...    | 107     | 121         | 113   | ...    | 95          | 110  |
| 1928 | ...    | 106     | 124         | 117   | ...    | 96          | 120  |

Source: Groman (1927, p. 47), Poletaev (1998, pp. 186-256).

**Table C-4. Large-scale industry by sector: Soviet territory, per cent of 1913**

|                          | Stone<br>and<br>glass | Mining | MBMW  | Wood-<br>working | Chemi-<br>cals | Food,<br>drink,<br>and nar-<br>cotics | Leather<br>and fur | Cotton<br>textiles | Woolen<br>textiles | Flax and<br>hemp<br>textiles | Paper<br>and<br>printing | Total  |
|--------------------------|-----------------------|--------|-------|------------------|----------------|---------------------------------------|--------------------|--------------------|--------------------|------------------------------|--------------------------|--------|
| <i>Number of series:</i> | 3                     | 15     | 7     | 1                | 16             | 10                                    | 2                  | 2                  | 2                  | 1                            | 1                        | 60     |
| <i>Weight:</i>           | 3.9%                  | 29.9%  | 13.2% | 2.7%             | 6.2%           | 21.5%                                 | 1.4%               | 13.1%              | 3.1%               | 1.9%                         | 3.2%                     | 100.0% |
| 1913                     | 100%                  | 100%   | 100%  | 100%             | 100%           | 100%                                  | 100%               | 100%               | 100%               | 100%                         | 100%                     | 100.0% |
| 1914                     | 107%                  | 93%    | 144%  | 85%              | 106%           | 111%                                  | 108%               | 100%               | 98%                | 125%                         | 89%                      | 106.3% |
| 1915                     | 78%                   | 80%    | 216%  | 64%              | 105%           | 110%                                  | 99%                | 110%               | 101%               | 132%                         | 75%                      | 110.9% |
| 1916                     | 61%                   | 82%    | 141%  | 49%              | 111%           | 83%                                   | 111%               | 110%               | 97%                | 115%                         | 51%                      | 94.2%  |
| 1917                     | 40%                   | 60%    | 146%  | 47%              | 85%            | 64%                                   | 93%                | 63%                | 70%                | 80%                          | 29%                      | 73.3%  |
| 1918                     | 11%                   | 23%    | 31%   | 23%              | 29%            | 39%                                   | 69%                | 41%                | 54%                | 42%                          | 12%                      | 31.4%  |
| 1919                     | 5%                    | 18%    | 18%   | 17%              | 18%            | 21%                                   | 35%                | 6%                 | 21%                | 23%                          | 6%                       | 16.6%  |
| 1920                     | 5%                    | 17%    | 22%   | 12%              | 18%            | 26%                                   | 21%                | 5%                 | 17%                | 25%                          | 5%                       | 17.5%  |
| 1921                     | 4%                    | 28%    | 7%    | 14%              | 24%            | 12%                                   | 37%                | 6%                 | 12%                | 12%                          | 4%                       | 16.0%  |
| 1922                     | 9%                    | 25%    | 17%   | 26%              | 23%            | 21%                                   | 57%                | 20%                | 27%                | 50%                          | 8%                       | 22.1%  |
| 1922/23                  | 14%                   | 29%    | 31%   | 39%              | 42%            | 31%                                   | 86%                | 27%                | 35%                | 55%                          | 25%                      | 31.0%  |
| 1923/24                  | 21%                   | 39%    | 32%   | 47%              | 55%            | 40%                                   | 159%               | 36%                | 41%                | 73%                          | 33%                      | 40.4%  |
| 1924/25                  | 38%                   | 51%    | 74%   | 69%              | 82%            | 58%                                   | 209%               | 66%                | 60%                | 89%                          | 53%                      | 62.7%  |
| 1925/26                  | 65%                   | 74%    | 120%  | 84%              | 119%           | 87%                                   | 205%               | 85%                | 72%                | 124%                         | 69%                      | 89.4%  |
| 1926/27                  | 81%                   | 89%    | 150%  | 95%              | 124%           | 88%                                   | 102%               | 99%                | 89%                | 126%                         | 99%                      | 101.4% |
| 1927/28                  | 99%                   | 91%    | 153%  | 105%             | 174%           | 123%                                  | 314%               | 110%               | 109%               | 116%                         | 93%                      | 118.4% |

Sources:

For quantities, see Appendix E, Tables E-2 to E-13.

Weights in industry gross value added at 1913 prices are from TsSU (1924b, p. 198).

Table C-5. Industry gross value of output, 1913 to 1927/28, alternative estimates: Soviet Union, billion prewar rubles

|         | Large-scale |      | Small-scale |      |
|---------|-------------|------|-------------|------|
|         | (A)         | (B)  | (C)         | (D)  |
| 1913    | 5.62        | ...  | 6.39        | 2.04 |
| 1914    | 5.69        | ...  | 6.43        | 2.00 |
| 1915    | 6.39        | ...  | 7.06        | 1.60 |
| 1916    | 6.83        | ...  | 7.42        | 1.80 |
| 1917    | 4.34        | ...  | 4.78        | 1.60 |
| 1918    | 1.91        | 1.85 | 2.16        | 1.50 |
| 1919    | 1.45        | 0.96 | 0.95        | 1.00 |
| 1920    | 0.98        | 0.82 | 0.82        | 0.90 |
| 1921    | 1.49        | 1.17 | 1.08        | 1.00 |
| 1922    | 1.95        | 1.52 | 1.44        | 1.10 |
| 1922/23 | 2.54        | 2.17 | 2.13        | 1.20 |
| 1923/24 | ...         | 2.59 | 2.59        | 1.46 |
| 1924/25 | ...         | 4.14 | 3.96        | 1.69 |
| 1925/26 | ...         | 6.02 | 5.72        | 1.86 |
| 1926/27 | ...         | 6.89 | 6.72        | 2.04 |
| 1927/28 | ...         | 8.43 | ...         | ...  |

Sources:

A. Gukhman (1928, p. 114).

B. TsSU (1929a, pp. 302-311).

C and D. Akademii nauk (1960, p. 198), citing *Planovoe khoziaistvo* 1929, no. 5, p. 191.

Table C-6. Industry gross value of output, 1913 to 1927/28, alternative estimates: Soviet Union, 1913=100%

|        | Large scale industry |                   |                |                    | All industry      |                |               |      |
|--------|----------------------|-------------------|----------------|--------------------|-------------------|----------------|---------------|------|
|        | Gosplan<br>(1929)    | TsUNKhU<br>(1939) | TsSU<br>(1957) | Maevskii<br>(1957) | Gosplan<br>(1929) | TsSU<br>(1964) | Nutter (1962) |      |
| Prices | 1926/27              | 1926/27           | 1926/27        | 1926/27            | 1913              | 1926/27        | 1913          | 1928 |
| 1913   | 100                  | 100               | 100            | 100                | 100               | 100            | 100           | 100  |
| 1914   | 101                  | 101               | ...            | 102                | 100               | ...            | 110           | 113  |
| 1915   | 110                  | 114               | ...            | 118                | 103               | ...            | 107           | 109  |
| 1916   | 116                  | 122               | ...            | 120                | 109               | ...            | 111           | 112  |
| 1917   | 75                   | 63                | 63             | 85                 | 76                | 71             | 92            | 92   |
| 1918   | 34                   | 35                | ...            | ...                | 43                | ...            | 40            | 43   |
| 1919   | 15                   | 26                | ...            | ...                | 23                | ...            | 24            | 21   |
| 1920   | 13                   | 14                | 14             | ...                | 20                | 22             | 22            | 19   |
| 1921   | 17                   | 20                | 21             | ...                | 25                | 31             | 24            | 21   |
| 1922   | 23                   | 26                | ...            | ...                | 30                | 41             | 34            | 34   |
| 1923   | 33                   | 39                | ...            | ...                | 40                | ...            | 43            | 43   |
| 1924   | 41                   | 46                | 46             | ...                | 48                | 51             | 53            | 52   |
| 1925   | 62                   | 76                | 75             | ...                | 67                | 73             | 73            | 75   |
| 1926   | 90                   | 108               | 108            | ...                | 90                | 98             | 91            | 91   |
| 1927   | 105                  | 124               | 122            | ...                | 104               | 111            | 101           | 98   |
| 1928   | 127                  | 154               | 152            | ...                | 120               | 132            | 103           | 100  |

Source: Poletaev (1998, pp. 186-256).

**Table C-7. Construction materials: Soviet territory, per cent of 1913**

|         | Cement | Red<br>bricks | Window<br>glas | Sawn<br>timber | Total  |
|---------|--------|---------------|----------------|----------------|--------|
| 1913    | 100%   | 100%          | 100%           | 100%           | 100.0% |
| 1914    | 119%   | 110%          | 93%            | 85%            | 101.5% |
| 1915    | 93%    | 64%           | 77%            | 64%            | 74.6%  |
| 1916    | 88%    | 43%           | 53%            | 49%            | 58.3%  |
| 1917    | 58%    | 31%           | 30%            | 47%            | 41.8%  |
| 1918    | 6%     | 15%           | 13%            | 23%            | 14.3%  |
| 1919    | ...    | 9%            | 7%             | 17%            | 10.9%  |
| 1920    | 2%     | 9%            | 5%             | 12%            | 7.1%   |
| 1921    | 4%     | 4%            | 4%             | 14%            | 6.9%   |
| 1922    | 10%    | 6%            | 10%            | 26%            | 12.9%  |
| 1922/23 | 15%    | 10%           | 18%            | 39%            | 20.3%  |
| 1923/24 | 24%    | 14%           | 24%            | 47%            | 27.5%  |
| 1924/25 | 48%    | 23%           | 43%            | 69%            | 45.7%  |
| 1925/26 | 88%    | 47%           | 61%            | 84%            | 69.9%  |
| 1926/27 | 108%   | 65%           | 70%            | 95%            | 84.7%  |
| 1927/28 | 126%   | 82%           | 88%            | 105%           | 100.3% |

Source: Calculated from Tables E-2 and E-6. The total is the unweighted mean of the component series in each year.

Table C-8. Rail and water transport, 1913 to 1927/28: physical units

|   | Railways          |                   |                   | Water-ways | Rail and waterways, total |           |
|---|-------------------|-------------------|-------------------|------------|---------------------------|-----------|
|   | Freight           | Pass-engers       | Convent-ional*    |            | Ton/km                    | % of 1913 |
|   | Ton/km<br>billion | Person<br>/km, bn | Ton/km<br>billion |            |                           |           |
| <i>Russian Empire exc. Finland and Poland</i> |                   |                   |                   |            |                           |           |
| 1913  | 76.8              | 29.7              | 106.5             | ...        | ...                       | 100.0%    |
| 1914  | 74.7              | 38.5              | 113.2             | ...        | ...                       | 106.3%    |
| 1915  | 83.0              | 53.2              | 136.2             | ...        | ...                       | 127.9%    |
| 1916  | 96.1              | 49.5              | 145.7             | ...        | ...                       | 136.8%    |
| 1917  | 63.0              | 22.0              | 85.0              | ...        | ...                       | 79.8%     |
| <i>Soviet interwar territory</i>              |                   |                   |                   |            |                           |           |
| 1913  | 65.7              | 25.2              | 90.9              | 29.0       | 119.9                     | 100.0%    |
| 1914  | 61.1              | 32.7              | 93.8              | ...        | ...                       | 103.2%    |
| 1915  | 73.6              | 45.2              | 118.8             | ...        | ...                       | 130.6%    |
| 1916  | 88.7              | 42.1              | 130.8             | ...        | ...                       | 143.8%    |
| 1917  | 61.1              | 18.7              | 79.8              | 15.0       | 94.8                      | 79.0%     |
| 1918  | 13.8              | 8.2               | 22.0              | 3.3        | 25.2                      | 21.0%     |
| 1919  | 17.5              | 10.4              | 27.9              | 4.2        | 32.0                      | 26.7%     |
| 1920  | 11.4              | 6.7               | 18.1              | 2.7        | 20.8                      | 17.4%     |
| 1921  | 14.0              | 8.3               | 22.3              | 3.3        | 25.6                      | 21.3%     |
| 1922  | 18.0              | 10.6              | 28.6              | 4.3        | 32.9                      | 27.4%     |
| 1922/23                                       | 23.5              | 13.9              | 37.4              | 5.6        | 43.0                      | 35.8%     |
| 1923/24                                       | 33.7              | 15.4              | 49.1              | 8.0        | 57.1                      | 47.6%     |
| 1924/25                                       | 47.4              | 19.0              | 66.4              | 8.6        | 75.0                      | 62.5%     |
| 1925/26                                       | 68.9              | 23.4              | 92.3              | 12.5       | 104.8                     | 87.4%     |
| 1926/27                                       | 81.7              | 22.1              | 103.8             | 14.8       | 118.6                     | 98.9%     |
| 1927/28                                       | 88.2              | 23.6              | 111.8             | 16.0       | 127.8                     | 106.6%    |

Note:

\* Conventional ton/kilometres sum freight and passenger traffic, converting one passenger/kilometre to one ton/kilometre of freight.

Sources:

Russian Empire: All figures are from Westwood (1990, pp. 305, 309) except 1916. For 1916 we interpolate railway freight on the figure for Soviet territory, taking into account the divergent trends of Russian and Soviet railway freight in 1917 relative to 1915. The figure for passenger transport is then interpolated on freight transport, again adjusting for the different trends of freight and passenger transport across adjacent years.

Soviet territory: Figures for 1913 in real terms from Westwood (1990, pp. 305, 309) are extrapolated through subsequent years as follows. For railway freight we use index numbers from Poletaev (1998, unpublished appendix) that closely match series reported by Westwood. For railway passenger transport we use 1913-based index numbers reported by Poletaev for 1922 through 1928; for the intervening years, we interpolate up to 1917 on passenger transport in the Russian Empire and, from 1918 to 1921, on freight transport, taking into account the divergent trends of freight and passenger transport from 1917 to 1922/23. We ignore the index number for passenger traffic in 1917 cited by Poletaev which, translated into real terms, gives a figure for Soviet territory as large as that for the entire Russian Empire. For water transport we have figures in real terms only for 1913, 1917, 1923/24, and 1927/28. We interpolate missing years on railway freight transport, again adjusting for the different trends across benchmark years.

**Table C-9. Trade, 1923/24 to 1927/28: Soviet Union, persons employed**

|         | Persons |
|---------|---------|
|         | 000     |
| 1922/23 | 286     |
| 1923/24 | 279     |
| 1924/25 | 420     |
| 1925/26 | 532     |
| 1926/27 | 582     |
| 1927/28 | 599     |

Sources:

1922/23: Vovsi (1926, p. 8), from a census of 1923.

1923/24-1927/28: TsSU (1929a).

**Table C-10. Civilian services, 1923/24 to 1927/28: Soviet Union, persons employed**

|         | Finance | Govern-<br>ment | Edu-<br>cation | Medical<br>services | Commu-<br>nications | Domestic<br>service |
|---------|---------|-----------------|----------------|---------------------|---------------------|---------------------|
|         | 000     | 000             | 000            | 000                 | 000                 | 000                 |
| 1920    | ...     | ...             | ...            | 111                 | ...                 | ...                 |
| 1921    | ...     | ...             | ...            | 103                 | ...                 | ...                 |
| 1922    | ...     | ...             | ...            | 117                 | ...                 | ...                 |
| 1922/23 | 31      | 923             | 421            | 179                 | 92                  | 0                   |
| 1923/24 | 48      | 947             | 484            | 244                 | 76                  | 133                 |
| 1924/25 | 66      | 1004            | 551            | 271                 | 82                  | 193                 |
| 1925/26 | 82      | 1127            | 603            | 324                 | 94                  | 253                 |
| 1926/27 | 85      | 1164            | 714            | 365                 | 95                  | 317                 |
| 1927/28 | 86      | 1135            | 781            | 405                 | 95                  | 317                 |

Sources:

1920-1923: Employment in medical services is based on TsSU (1927, pp. 104-5).

1922/23: Vovsi (1926, p. 9).

1923-1927: TsSU (1929a).

**Table C-11. Military services, 1913 to 1927/28: persons employed**

|   | Armed forces       |      | Anti-     | Total |
|---|--------------------|------|-----------|-------|
|   | of Russia and USSR |      | Bolshevik |       |
|   | (A)                | (B)  | forces    |       |
|   | 000                | 000  | 000       | 000   |
| <i>Russian Empire exc. Finland and Poland</i> |                    |      |           |       |
| 1913  | 1286               | 1423 | ...       | 1423  |
| 1914  | 1321               | 2405 | ...       | 2405  |
| 1915  | 5500               | 6425 | ...       | 6425  |
| 1916  | 10900              | 9108 | ...       | 9108  |
| 1917  | 9050               | 7992 | ...       | 7992  |
| <i>Soviet interwar territory</i>              |                    |      |           |       |
| 1913  | ...                | 1239 | ...       | 1239  |
| 1918  | ...                | 313  | 50        | 363   |
| 1919  | 1550               | 1867 | 300       | 2167  |
| 1920  | 3050               | 4139 | 75        | 4214  |
| 1921  | 5500               | 3113 | ...       | 3113  |
| 1922  | 3600               | 1590 | ...       | 1590  |
| 1922/23                                       | 2100               | 703  | ...       | 703   |
| 1923/24                                       | 562                | 562  | ...       | 562   |
| 1924/25                                       | 562                | 562  | ...       | 562   |
| 1925/26                                       | 562                | 562  | ...       | 562   |
| 1926/27                                       | 562                | 562  | ...       | 562   |
| 1927/28                                       | 562                | 562  | ...       | 562   |

**Sources:**

A. Correlates of War database, at [www.correlatesofwar.org](http://www.correlatesofwar.org).

B. 1913-1917: Calculated from Golovin (2001, pp. 166, 186).

The figure given for Soviet territory in 1913 under column (B) is notional, and represents the Russian Empire figure for the same year adjusted in proportion to the official population figures for the two territories shown in Table 2. Figures for 1918 to 1921 are calculated from Direktivy (1978, pp. 15-227) and those for 1922 to 1927 are from TsSU (1929a).

C. An arbitrary allowance.

D. The sum of B and C.

## Appendix D. Agriculture

Table D-1 reports the corrections we apply to the original agricultural data as published at the time, and table D-2 presents our final corrected series.

The basic source for pre-revolutionary figures on Russian agriculture is an official summary of Russian economic development during World War I (Narkomfin 1922). Figures for 1913 and 1914 cover the whole empire, but there are omissions for particular regions – mainly those that were occupied by Germany – and for particular products in the later years.<sup>10</sup> We interpolate missing figures from trends in neighboring regions. To move from Imperial to Soviet territory, we use regional information from this volume and from the Imperial yearbooks for 1913 and 1915. In moving to Soviet frontiers we added the cotton production of Khiva and Bukhara.

Livestock figures are of worse quality than the arable data. For 1916 there are no livestock figures at all for the Asiatic part of the empire; the European part is represented by data for 48 out of 53 provinces. These omissions were interpolated using data on the regional distribution of livestock across the Empire in previous years. We use the same regional information to estimate figures for Soviet territory.

The agricultural data of lowest quality are those for 1918 and 1919. For grains, potatoes, and flax fibers, figures exist only for particular districts of 34 Russian provinces. These report average yields per unit of area in 1918 and 1919, and cropped areas in 1917 and 1919. For these regions, cropped areas multiplied by yields give output (for 1918 we use the average of areas cropped in 1917 and 1919). We extend the regional figures to the entire Empire and Soviet territories on the basis of these districts' share in national output figures of 1917.

For livestock, too, figures exist only for the same districts of the 34 regions. Because national livestock figures in 1917 are not known, we have difficulty extending the regional figures to the country as a whole. As an approximation, we use the average of the regional shares of grains, potatoes, and flax fibers.

Territorial adjustments are not the only obstacle to comparability of agricultural statistics before and after the Revolution. In addition, there was widespread underreporting. To compensate for this, we apply various corrections to the pre-revolutionary statistics, as shown in Table D-1. These, especially those applied to grains, are the most likely source of the divergence between our own aggregate series and the estimates of the 1920s, mentioned in Appendix C.

We start with grains, to which we apply two correction factors. Many contemporary statisticians and economists believed that peasants tended to underreport yields and sown areas, particularly before the Revolution. From the mid-1920s, Gosplan statisticians applied a

---

<sup>10</sup> For 1915 there are no data on grain production for 6 out of 53 regions in the European part of the Russian Empire, and 3 out of 24 regions in the Asiatic part. In 1916 we miss 5 European and 13 Asiatic regions, and in 1917 we miss 2 and 5. On potatoes in 1916 there are no data for the Baltic region, Belorussia, the Middle Volga, South Steppe, and Steppe regions, Turkestan, Transcaucasia, and Siberia and in 1917 for the Steppe region and Turkestan.

1.19 correction factor to scale up the pre-revolutionary grain harvest retrospectively (Wheatcroft and Davies 1994c). While the intrinsic validity of this correction is debatable, it continues to be required for comparability between grain statistics gathered before and after the Revolution. We apply it therefore to our series for 1913 to 1917.

In the early 1920s, however, Soviet statisticians applied a smaller correction factor, namely 10-12%. They applied this both to the pre-revolutionary grain statistics and to the contemporary Soviet figures, in the belief that the pre-revolutionary problem of underreporting had been carried over into the Soviet registration system. Thus, grain figures for 1918 and 1919 appeared in the 1921 source that we use, already multiplied by 1.11 (not 1.19). For consistency with the grain figures of the later 1920s, multiplied by 1.19 (not 1.11), therefore, we apply a further adjustment factor of 1.072 (1.19 divided by 1.11). We do not adjust the 1920 figure because, at the time it was published in 1924, Soviet statistics had already switched to a 1.19 correction.

The further problem of wartime underreporting deserves special mention. Under the policy of compulsory grain requisitions from 1918 to 1920, peasants had stronger incentives to conceal harvests than in peacetime. Contemporary statisticians were well aware of the issue and introduced further corrections for it from the early 1920s. These corrections are already in our data. The original TsSU (1921b) correction factor was 1.25, which was the product of multiplying the 10-12 percent adjustment for peacetime underreporting, discussed above, and a further 10-15 percent correction for wartime underreporting of yields.

Alternative views from the 1920s, reviewed by Kabanov (1988), suggested larger corrections of wartime yields, in a range that varied up to 40 percent. In the early 1920s, TsSU did not support such larger adjustments. At this time TsSU remained a relatively independent organization, with highly qualified statisticians still in charge. In the late 1920s, however, higher agricultural figures for 1918 and 1919 began to appear in official publications. It is likely that these responded to political requirements of the time, rather than changes in expert assessment. The official line blamed the grain procurement difficulties on the peasants' concealment of harvests and hoarding of stocks, and applied the same logic to the grain figures of 1918 and 1919.

To summarize, we reject the further upward correction of the figures published in the early 1920s as driven by ideology rather than scholarship. In fact, larger adjustments would imply the concealment not only of yields but also of areas under crops. The latter is less likely because cropped areas were more easily observable.

We apply further corrections to the potato harvests reported for the same years. At this time official figures included only field-grown potatoes, omitting those grown on the side, in "subsidiary" farming in both town and country. Wheatcroft and Davies (1994c) cite Gukhman's (1925) estimate of 1913 potato production for a correction factor of 1.283, which we use to scale the figures up.

Finally, livestock-breeding accounted for almost one third of agricultural production in 1913. The 1916 agricultural census revealed underreporting of livestock on a large scale. This was brought to light by Vainshtein (1960); before his work, no corrections were made. We follow him in multiplying livestock figures for 1913 to 1915 by factors of 1.198 for horses; 1.415 for



cattle; and 1.896 for pigs. The correction factor we apply to sheep and goats (1.504) is the arithmetic mean of the three Vainshtein correction factors for other livestock.

**Table D-1. Correction factors for agriculture**

|                 | Period    | Factor |
|-----------------|-----------|--------|
| Grains          | 1913-1917 | 1.19   |
| Grains          | 1918-1919 | 1.072  |
| Potatoes        | 1913-1919 | 1.283  |
| Horses          | 1913-1919 | 1.199  |
| Cattle          | 1913-1919 | 1.416  |
| Pigs            | 1913-1919 | 1.897  |
| Sheep and goats | 1913-1919 | 1.504  |

**Sources:**

For discussion of the underreporting of agricultural production in peacetime and wartime, see the text of this appendix. Correction factors are applied to grains on the authority of Wheatcroft (1990) and Wheatcroft and Davies (1994c); to potatoes following Gukhman (1925), cited by Wheatcroft and Davies (1994c); and to horses, cattle, and pigs following Vainshtein (1960). The correction factor for sheep and goats is the arithmetic mean of the three Vainshtein correction factors for other livestock.

Table D-2. Agriculture, 1913 to 1928: physical units

|  | Livestock   |             |             |             |                       |             | Industrial crops |             |             |             |             |
|--|-------------|-------------|-------------|-------------|-----------------------|-------------|------------------|-------------|-------------|-------------|-------------|
|  | Grains      | Potatoes    | Horses      | Cattle      | Sheep<br>and<br>goats | Pigs        | flax             | hemp        | flax        | hemp        | cotton      |
|  |             |             |             |             | Head                  |             | fibre            | fibre       | seed        | seed        |             |
|  | <i>Tons</i> | <i>Tons</i> | <i>Head</i> | <i>Head</i> | <i>Head</i>           | <i>Head</i> | <i>Tons</i>      | <i>Tons</i> | <i>Tons</i> | <i>Tons</i> | <i>Tons</i> |
|  | <i>000</i>  | <i>000</i>  | <i>000</i>  | <i>000</i>  | <i>000</i>            | <i>000</i>  | <i>000</i>       | <i>000</i>  | <i>000</i>  | <i>000</i>  | <i>000</i>  |
| <i>Weights</i>   | 51.0%       | 14.0%       | 7.0%        | 7.0%        | 7.0%                  | 7.0%        | 3.5%             | ...         | ...         | ...         | 3.5%        |
| <i>Russian Empire exc. Finland and Poland</i>                                      |             |             |             |             |                       |             |                  |             |             |             |             |
| 1913   | 99176       | 32699       | 39099       | 69495       | 110034                | 25948       | 861              | ...         | ...         | ...         | 199         |
| 1914   | 82155       | 34225       | 40606       | 70831       | 107821                | 27581       | 579              | ...         | ...         | ...         | 218         |
| 1915   | 93212       | 28958       | 38344       | 67462       | 112540                | 23790       | 512              | ...         | ...         | ...         | 255         |
| 1916   | 79406       | 19431       | 36100       | 61092       | 127281                | 20832       | 498              | ...         | ...         | ...         | 212         |
| 1917   | 80912       | 26091       | 31978       | 53541       | 101166                | 20141       | 460              | ...         | ...         | ...         | 113         |
| 1918   | 53437       | 23109       | 30911       | 48245       | 89312                 | 15958       | 420              | ...         | ...         | ...         | 120         |
| 1919   | 44654       | 24246       | 29844       | 42948       | 77459                 | 11774       | 315              | ...         | ...         | ...         | 62          |
| <i>Russian Empire territory (exc. Finland and Poland) under government control</i> |             |             |             |             |                       |             |                  |             |             |             |             |
| 1913   | 99176       | 32699       | 39099       | 69495       | 110034                | 25948       | 861              | ...         | ...         | ...         | 199         |
| 1914   | 82155       | 34225       | 40606       | 70831       | 107821                | 27581       | 579              | ...         | ...         | ...         | 218         |
| 1915   | 86002       | 26714       | 37299       | 64803       | 110398                | 21526       | 475              | ...         | ...         | ...         | 255         |
| 1916   | 71413       | 16276       | 35458       | 59856       | 125797                | 19672       | 471              | ...         | ...         | ...         | 212         |
| 1917   | 73873       | 24391       | 29724       | 49768       | 94036                 | 18722       | 368              | ...         | ...         | ...         | 113         |
| <i>Soviet interwar territory</i>   |             |             |             |             |                       |             |                  |             |             |             |             |
| 1913   | 88934       | 25640       | 35638       | 61096       | 101526                | 20546       | 928              | ...         | ...         | ...         | 233         |
| 1914   | 73428       | 27112       | 36969       | 61359       | 99209                 | 22009       | 618              | ...         | ...         | ...         | 279         |
| 1915   | 82919       | 24404       | 35207       | 59151       | 105047                | 18423       | 533              | ...         | ...         | ...         | 326         |
| 1916   | 69920       | 14045       | 31506       | 49966       | 83176                 | 19587       | 537              | 307         | 563         | 289         | 265         |
| 1917   | 72054       | 21752       | 28078       | 47012       | 88829                 | 17685       | 539              | ...         | ...         | ...         | 141         |
| 1918   | 46920       | 20291       | 27141       | 42361       | 78421                 | 14011       | 369              | ...         | ...         | ...         | 120         |
| 1919   | 39209       | 21289       | 26205       | 37711       | 68013                 | 10338       | 277              | ...         | ...         | ...         | 62          |
| 1920   | 34111       | 20863       | 25412       | 39101       | 51030                 | 14830       | 263              | 257         | ...         | ...         | 46          |
| 1921   | 27668       | 21343       | 23331       | 36818       | 49721                 | 12491       | 286              | 216         | ...         | ...         | 34          |
| 1922   | 46971       | 22889       | 18875       | 33031       | 40022                 | 7637        | 319              | 291         | 279         | 257         | 72          |
| 1923   | 45895       | 33089       | 20035       | 38567       | 56745                 | 9105        | 305              | 316         | 312         | 313         | 140         |
| 1924   | 51581       | 36237       | 24980       | 57690       | 98389                 | 19254       | 430              | 321         | 303         | 268         | 346         |
| 1925   | 72657       | 38606       | 26440       | 60781       | 114502                | 18946       | 367              | 483         | 576         | 548         | 565         |
| 1926   | 76562       | 42969       | 28772       | 64074       | 121671                | 18249       | 315              | 431         | 536         | 529         | 559         |
| 1927   | 71719       | 41218       | 30727       | 66203       | 131768                | 22552       | 292              | 511         | 518         | 596         | 718         |
| 1928   | 71542       | 39904       | 32207       | 67124       | 137138                | 25367       | 365              | 489         | 563         | 534         | 891         |

## Note:

All figures in the original sources cited below have been multiplied by the correction coefficients in Table D-1, for reasons given in the text.

(Table D-2 cont.) Sources:

*Russian Empire territory exc. Finland and Poland:*

1913-1917: Grains, potatoes, livestock, and cotton are from Narkomfin (1922). Grains are computed as the sum of winter and oats, barley, spring rye and wheat, buckwheat, and millet. Original data for 1916 and 1917 do not cover the entire territory of the Empire because of the occupation of western provinces and the failure of some interior provinces to report to the centre. Adjustments are based on the weights of missing provinces in 1913-1915. Poods are converted-tons.

1917: livestock are from TsSU (1921b). Original data for 34 provinces are multiplied by a factor of 82/34 for the 82 provinces of the Empire. An alternative correction would use population weights.

1918-1919: grains, potatoes, livestock, and cotton are from TsSU (1921b). Original data for 34 provinces are multiplied by a factor of 82/34 for Empire territory.

*Soviet interwar territory:*

1916: livestock are from TsSU (1924b, pp. 136-137).

1913-1917: grains and potatoes are calculated from Narkkomfin (1922).

1913-1916: livestock are calculated from Narkomfin (1922).

1913-1917: cotton is from Narkomfin (1922).

1917: livestock are from TsSU (1921b). Original data for 34 provinces are multiplied by a factor of 72/34 for the 72 provinces of the interwar Soviet Union.

1918-1919: grains, potatoes, livestock, and cotton are from TsSU (1921b). Original data for 34 provinces are multiplied by a factor of 72/34 for Soviet interwar territory.

1918-1923: cotton is from Narodnoe khozyastvo za 70 let (1987).

1920-1921: grains, potatoes, livestock, and flax are from TsSU (1924b, pp. 131, 135).

1922: potatoes, livestock, and flax are from TsSU (1924b, pp. 131, 135).

1923: potatoes are from Gukhman (1925, p. 133).

1922-1923: grains are from TsSU (1924a, p. 83).

1924: grains, potatoes, flax, hemp, and cotton are from TsSU (1927, p. 119).

1924-1926: livestock are from TsSU (1927, p. 188).

1925-1928: grains, potatoes, flax, hemp, and cotton are from TsSU (1929b, pp. 221, 249-261).

1927-1928: livestock are from TsSU (1929b, p. 221).

## Appendix E. Large-Scale Industry\*

**Table E-1. Large-scale industry, 1913 to 1917: the Russian Empire, physical units**

|      | Coal        | Anthracite  | Oil         | Peat        | Pig iron    | Open hearth steel | Rolled steel | Aircraft     | Gasoline    | Solar oil   | Flour       | Raw spirit     |
|------|-------------|-------------|-------------|-------------|-------------|-------------------|--------------|--------------|-------------|-------------|-------------|----------------|
|      | <i>Tons</i> | <i>Tons</i> | <i>Tons</i> | <i>Tons</i> | <i>Tons</i> | <i>Tons</i>       | <i>Tons</i>  | <i>Units</i> | <i>Tons</i> | <i>Tons</i> | <i>Tons</i> | <i>Grams</i>   |
|      | <i>000</i>  | <i>000</i>  | <i>000</i>  | <i>000</i>  | <i>000</i>  | <i>000</i>        | <i>000</i>   |              | <i>000</i>  | <i>000</i>  | <i>000</i>  | <i>million</i> |
| 1913 | 30631       | 4077        | 8876        | 1458        | 4186        | 4302              | 3560         | 280          | 29.2        | 77.0        | 1713        | 87101          |
| 1914 | 30288       | 4366        | 8896        | 1649        | 4062        | 4442              | 3625         | 535          | 25.0        | 69.9        | 1528        | 79972          |
| 1915 | 31212       | 3258        | 9197        | 1417        | 3667        | 4098              | 3249         | 1305         | 22.0        | 39.8        | 1520        | 93307          |
| 1916 | 32018       | 2150        | 9723        | 1360        | 3779        | 4252              | 3356         | 1870         | ...         | ...         | 1659        | 83351          |
| 1917 | 28615       | 5189        | 8198        | 1163        | 3121        | 2549              | ...          | 1897         | ...         | ...         | 1761        | ...            |

Sources: TsSU (1921a); Narkomfin (1922).

**Table E-2. Large-scale industry on Soviet territory, 1913 to 1927/28: Stone and glass, physical units**

|         | Cement       | Red brick      | Window glass |
|---------|--------------|----------------|--------------|
|         | <i>Casks</i> | <i>Units</i>   | <i>Tons</i>  |
|         | <i>000</i>   | <i>million</i> |              |
| 1913    | 9275         | 2143.6         | 403255       |
| 1914    | 10996        | 2353.6         | 374344       |
| 1915    | 8632         | 1374.2         | 310230       |
| 1916    | 8167         | 921.5          | 214011       |
| 1917    | 5425         | 674.1          | 121789       |
| 1918    | 578          | 314.5          | 53351        |
| 1919    | 42           | 188.8          | 28224        |
| 1920    | 222          | 189.7          | 18919        |
| 1921    | 397          | 94             | 17600        |
| 1922    | 888          | 129            | 41600        |
| 1922/23 | 1385         | 215.6          | 70858        |
| 1923/24 | 2250         | 303.5          | 98122        |
| 1924/25 | 4454         | 486.3          | 174563       |
| 1925/26 | 8144         | 1007.9         | 246078       |
| 1926/27 | 10056        | 1397.8         | 281788       |
| 1927/28 | 11661        | 1765           | 356200       |

Sources:

1917: TsSU (1927), pp. 244-247.

1918-1928: TsSU (1929a), pp. 302-311.

1913-1927/28: Kafengaus (1994/1930, pp. 354-551).

---

\* Not for publication.

**Table E-3. Large-scale industry on Soviet territory, 1913 to 1927/28: Mining, physical units**

|         | Coal and<br>lignite     | Anth-<br>racite         | Lignite                 | Oil                 | Peat                    | Coke                    | Iron<br>ore             | Copper<br>ore       | Manga-<br>nese          | Sulphur<br>pyrites  | Chrome<br>ore | Asbestos | HCl<br>salts        |
|---------|-------------------------|-------------------------|-------------------------|---------------------|-------------------------|-------------------------|-------------------------|---------------------|-------------------------|---------------------|---------------|----------|---------------------|
|         | <i>Tons<br/>million</i> | <i>Tons<br/>million</i> | <i>Tons<br/>million</i> | <i>Tons<br/>000</i> | <i>Tons<br/>million</i> | <i>Tons<br/>million</i> | <i>Tons<br/>million</i> | <i>Tons<br/>000</i> | <i>Tons<br/>million</i> | <i>Tons<br/>000</i> | <i>Tons</i>   | *        | <i>Tons<br/>000</i> |
| 1913    | 24.257                  | 4.706                   | 9.235                   | 9235                | 1.724                   | ...                     | 9.215                   | 1117                | 1.254                   | 66.2                | 25979         | 22490    | 1978                |
| 1914    | 26.813                  | 5.137                   | 9.132                   | 9132                | 1.814                   | ...                     | 6.539                   | 999                 | 0.906                   | 131.3               | 9828          | 15905    | 1933                |
| 1915    | 26.443                  | 5.037                   | 9.305                   | 9305                | 1.635                   | ...                     | 5.269                   | 838                 | 0.537                   | 158.8               | 7207          | 10172    | 2003                |
| 1916    | 28.935                  | 5.511                   | 9.880                   | 9880                | 1.608                   | ...                     | 6.635                   | 762                 | 0.472                   | 364.5               | 4259          | 12171    | 2602                |
| 1917    | 26.232                  | 4.997                   | 8.725                   | 8725                | 1.391                   | ...                     | 4.955                   | 607                 | 0.382                   | 206.3               | 13694         | 6274     | 1804                |
| 1918    | 10.894                  | 2.075                   | 3.842                   | 3842                | 1.099                   | ...                     | 0.772                   | 135                 | 0.065                   | ...                 | 868           | 1360     | 1321                |
| 1919    | 7.805                   | 1.487                   | 4.614                   | 4614                | 1.187                   | ...                     | 0.183                   | 64                  | 0.056                   | ...                 | 115           | 672      | 610                 |
| 1920    | 7.186                   | 1.369                   | 3.831                   | 3831                | 1.526                   | ...                     | 0.164                   | 4                   | 0.097                   | ...                 | 2965          | 1458     | 740                 |
| 1921    | 7.002                   | 1.528                   | ...                     | 4001                | 2.027                   | ...                     | 0.129                   | 4                   | ...                     | ...                 | ...           | ...      | 983                 |
| 1922    | 7.317                   | 1.723                   | 4.646                   | 4912                | 2.137                   | ...                     | 0.244                   | 13                  | 0.066                   | 6.3                 | 966           | 3391     | 743                 |
| 1922/23 | 8.604                   | 2.035                   | 5.271                   | 5271                | 2.376                   | ...                     | 0.481                   | 62                  | 0.320                   | 18.5                | 672           | 6028     | 1040                |
| 1923/24 | 12.659                  | 2.530                   | 6.069                   | 6069                | 2.821                   | 0.725                   | 1.043                   | 100                 | 0.427                   | 24.9                | 7273          | 8469     | 1207                |
| 1924/25 | 13.138                  | 3.334                   | 7.060                   | 7060                | 2.680                   | 1.356                   | 2.083                   | 178                 | 0.573                   | 46.0                | 30648         | 12318    | 1356                |
| 1925/26 | 20.180                  | 5.351                   | 8.323                   | 8323                | 3.510                   | 2.761                   | 3.307                   | 381                 | 0.970                   | 95.0                | 26667         | 18297    | 1587                |
| 1926/27 | 25.220                  | 6.798                   | 10.284                  | 10284               | 4.813                   | 3.415                   | 4.804                   | 541                 | 0.840                   | 167.4               | 18060         | 21056    | 2088                |
| 1927/28 | 26.439                  | 8.074                   | ...                     | 11509               | 5.040                   | ...                     | 5.357                   | 647                 | 0.737                   | ...                 | ...           | ...      | 2428                |

Source: As Table E-2.

Note: \* Units not reported.

**Table E-4. Large-scale industry on Soviet territory, 1913 to 1927/28: Metallurgy, physical units**

|         | Iron                | Sheet<br>steel      | Rolled<br>steel     | Copper              | Zinc        | Lead        | Silver      | Rails               |
|---------|---------------------|---------------------|---------------------|---------------------|-------------|-------------|-------------|---------------------|
|         | <i>Tons<br/>000</i> | <i>Tons<br/>000</i> | <i>Tons<br/>000</i> | <i>Tons<br/>000</i> | <i>Tons</i> | <i>Tons</i> | <i>Tons</i> | <i>Tons<br/>000</i> |
| 1913    | 4216                | 4247                | 3509                | 32.3                | 2948        | 1371        | 4.1         | 645                 |
| 1914    | 4082                | 4400                | 3582                | 32.3                | 2408        | 1082        | 2.4         | 706                 |
| 1915    | 3685                | 4106                | 3257                | 26.0                | 1884        | 819         | 2.0         | 561                 |
| 1916    | 3798                | 4273                | 3372                | 23.6                | 1523        | 901         | 0.9         | 408                 |
| 1917    | 3023                | 3080                | 2444                | 18.5                | ...         | 41          | ...         | 195                 |
| 1918    | 516                 | 402                 | 357                 | 4.0                 | ...         | ...         | ...         | 19                  |
| 1919    | 113                 | 199                 | 179                 | ...                 | ...         | ...         | ...         | 35                  |
| 1920    | 115                 | 162                 | 147                 | ...                 | 82          | 193         | ...         | 21                  |
| 1921    | 116                 | 182                 | 224                 | ...                 | ...         | ...         | ...         | ...                 |
| 1922    | 188                 | 317                 | 250                 | 10.8                | ...         | 328         | 0.4         | 6                   |
| 1922/23 | 300                 | 615                 | 474                 | 2.3                 | 16          | 405         | 2.6         | 65                  |
| 1923/24 | 680                 | 993                 | 690                 | 2.8                 | 508         | 643         | 2.8         | 93                  |
| 1924/25 | 1292                | 1873                | 1390                | 7.6                 | 1491        | 876         | 4.2         | 169                 |
| 1925/26 | 2202                | 2911                | 2250                | 11.6                | 1867        | 1273        | 10.0        | 295                 |
| 1926/27 | 2961                | 3592                | 2744                | 13.7                | 2266        | 1027        | 12.6        | 313                 |
| 1927/28 | 3282                | 4104                | 3232                | ...                 | ...         | ...         | ...         | ...                 |

Source: As Table E-2.

Table E-5. Large-scale industry on Soviet territory, 1913 to 1927/28: Machine building and metalworking, physical units

|         | Aircraft     | Tractors     | Ploughs    | Harrows      | Seeders      | Threshers    | Winnow-<br>ers and<br>sorters | Reapers<br>and<br>mowers | Steam<br>engines | Pass-<br>enger<br>wagons | Freight<br>wagons |
|---------|--------------|--------------|------------|--------------|--------------|--------------|-------------------------------|--------------------------|------------------|--------------------------|-------------------|
|         | <i>Units</i> | <i>Units</i> | <i>000</i> | <i>Units</i> | <i>Units</i> | <i>Units</i> | <i>Units</i>                  | <i>Units</i>             | <i>Units</i>     | <i>Units</i>             | <i>Units</i>      |
| 1913    | 280          | 1            | 667        | ...          | 68300        | 110180       | 49000                         | 111000                   | 654              | 1031                     | 13801             |
| 1914    | 535          | 0            | ...        | ...          | ...          | ...          | ...                           | ...                      | 763              | 1223                     | 20385             |
| 1915    | 1305         | 0            | ...        | ...          | ...          | ...          | ...                           | ...                      | 917              | 886                      | 23486             |
| 1916    | 1870         | 0            | 133        | ...          | 13688        | 22000        | ...                           | 22200                    | 600              | 502                      | 16792             |
| 1917    | 1897         | 0            | 50         | 6500         | ...          | 15200        | 3200                          | 7600                     | 420              | 298                      | 12702             |
| 1918    | 255          | 0            | 13         | 100          | ...          | 100          | 500                           | 600                      | ...              | ...                      | ...               |
| 1919    | 137          | 0            | 23         | 1000         | ...          | 100          | 800                           | 1000                     | ...              | ...                      | ...               |
| 1920    | 166          | 0            | 89         | 2600         | 9900         | 1200         | 3300                          | 2300                     | ...              | ...                      | ...               |
| 1921    | 13           | 0            | 101        | 6200         | 5000         | 1700         | 2000                          | 1700                     | ...              | ...                      | ...               |
| 1922    | 44           | 0            | 159        | 15400        | 8500         | 19700        | 8800                          | 19700                    | ...              | ...                      | ...               |
| 1922/23 | 146          | 2            | 207        | 26800        | 10700        | 25900        | 11600                         | 25900                    | ...              | ...                      | ...               |
| 1923/24 | 208          | 10           | 174        | 125800       | 9700         | 13600        | 21300                         | 13600                    | ...              | ...                      | ...               |
| 1924/25 | 326          | 481          | 582        | 174500       | 29980        | 35600        | 57600                         | 55800                    | ...              | ...                      | ...               |
| 1925/26 | 469          | 813          | 945        | 310200       | 61995        | 54700        | 94800                         | 88100                    | ...              | ...                      | ...               |
| 1926/27 | 575          | 781          | 1037       | 355390       | 58065        | 66472        | 141974                        | 170501                   | ...              | ...                      | ...               |
| 1927/28 | 870          | 1332         | 1167       | 590028       | 55123        | 84025        | 194052                        | 244895                   | ...              | ...                      | ...               |

Source: As Table E-2.

Table E-6. Large-scale industry on Soviet territory, 1913 to 1927/28: Woodworking, physical units

|         | Sawn<br>timber                 | Ply-<br>wood               |
|---------|--------------------------------|----------------------------|
|         | <i>Cu. m</i><br><i>million</i> | <i>Cu. m</i><br><i>000</i> |
| 1913    | 11875                          | 24556                      |
| 1914    | 10062                          | 40459                      |
| 1915    | 7657                           | 42583                      |
| 1916    | 5813                           | 45905                      |
| 1917    | 5578                           | 54652                      |
| 1918    | 2754                           | ...                        |
| 1919    | 2008                           | ...                        |
| 1920    | 1484                           | ...                        |
| 1921    | 1710                           | ...                        |
| 1922    | 3057                           | 3330                       |
| 1922/23 | 4584                           | 22995                      |
| 1923/24 | 5621                           | 52600                      |
| 1924/25 | 8165                           | 84500                      |
| 1925/26 | 9943                           | 118000                     |
| 1926/27 | 11322                          | 137435                     |
| 1927/28 | 12458                          | ...                        |

Source: As Table E-2.

Table E-7. Large-scale industry on Soviet territory, 1913 to 1927/28: Chemicals, physical units

|         | Caustic<br>soda | Baking<br>soda | House-<br>hold<br>soap | Rubber<br>foot-<br>wear | Sul-<br>phates | Nitric<br>acid | Hydro-<br>chloric<br>acid | Sul-<br>phuric<br>acid | Conc.<br>sul-<br>phuric<br>acid | Paints |
|---------|-----------------|----------------|------------------------|-------------------------|----------------|----------------|---------------------------|------------------------|---------------------------------|--------|
|         | Tons            | Tons           | Boxes<br>000           | Pairs<br>000            | Tons           | *              | *                         | *                      | *                               | *      |
| 1913    | 49338           | 159873         | 94892                  | 27885                   | 70649          | 9992           | 60737                     | 132786                 | 51142                           | 3243   |
| 1914    | 52565           | 144378         | 96252                  | 23164                   | 41033          | 8665           | 42376                     | 98414                  | 43441                           | 3964   |
| 1915    | 46291           | 117071         | 111273                 | 23769                   | 54973          | 16626          | 31582                     | 156172                 | 79773                           | 1114   |
| 1916    | 49205           | 135647         | 111273                 | 19695                   | 49010          | 25390          | 39263                     | 184980                 | 73704                           | 164    |
| 1917    | 40017           | 101307         | 87341                  | 17402                   | 30502          | 20197          | 39354                     | 194693                 | 85224                           | 410    |
| 1918    | 7797            | 18984          | 63835                  | 5856                    | 14489          | 5602           | 21726                     | 45197                  | 24586                           | 213    |
| 1919    | 1671            | 4056           | 7579                   | 2616                    | 3623           | 3178           | 4875                      | 22403                  | 17418                           | 98     |
| 1920    | ...             | 11212          | 11475                  | 10                      | 9999           | 1769           | 16734                     | 16911                  | 6952                            | 49     |
| 1921    | ...             | ...            | 8348                   | 626                     | ...            | ...            | ...                       | ...                    | ...                             | ...    |
| 1922    | 10631           | 32170          | 11603                  | 8568                    | ...            | ...            | 17780                     | 36491                  | 6843                            | 524    |
| 1922/23 | 19384           | 55120          | 20263                  | 9971                    | 15398          | ...            | 23440                     | 51848                  | 12489                           | 1605   |
| 1923/24 | 29550           | 78151          | 41197                  | 6178                    | 26176          | ...            | 38380                     | 84818                  | 22146                           | 1458   |
| 1924/25 | 35742           | 98447          | 74957                  | 15731                   | 23408          | ...            | 35906                     | 106064                 | 23424                           | 3800   |
| 1925/26 | 43621           | 136728         | 101690                 | 25302                   | 27912          | ...            | 43310                     | 147949                 | 24047                           | 8485   |
| 1926/27 | 51437           | 171445         | 129623                 | 29631                   | 29824          | ...            | 46481                     | 167705                 | 32986                           | ...    |
| 1927/28 | 55734           | 209011         | 156097                 | 36004                   | ...            | ...            | ...                       | ...                    | ...                             | ...    |

Source: As Table E-2.

Note: \* Units not reported.

Table E-7 (continued).

|         | Gasoline    | Lighting<br>oil | Solar<br>oil | Residual<br>oils | Matches      |
|---------|-------------|-----------------|--------------|------------------|--------------|
|         | Tons<br>000 | Tons<br>000     | Tons<br>000  | Tons<br>000      | Boxes<br>000 |
| 1913    | 262.6       | 1553            | 144.1        | 4127             | 3753         |
| 1914    | 179.3       | 1366            | 111.6        | 4132             | 4092         |
| 1915    | 91.3        | 1153            | 76.1         | 5514             | 2940         |
| 1916    | 223.5       | 1164            | 112.9        | 3713             | 2900         |
| 1917    | 229.8       | 1223            | 147.8        | 3410             | 2280         |
| 1918    | 18.7        | 386             | 36.9         | 956              | 1019         |
| 1919    | 50.9        | 524             | 23.2         | 1643             | 1008         |
| 1920    | 36.2        | 396             | 103.8        | 1115             | 633          |
| 1921    | 67.0        | 532             | 32.0         | 2167             | 782          |
| 1922    | 83.0        | 565             | 39.0         | 2258             | 1031         |
| 1922/23 | 140.3       | 613             | 242.0        | 2190             | 1425         |
| 1923/24 | 223.4       | 789             | 275.1        | 2399             | 1883         |
| 1924/25 | 406.6       | 1132            | 355.1        | 2927             | 3162         |
| 1925/26 | 603.0       | 1324            | 521.6        | 3191             | 3955         |
| 1926/27 | 775.2       | 1740            | 482.5        | 3705             | 4250         |
| 1927/28 | 934.0       | 2047            | 655.0        | 4683             | 5554         |

Source: As Table E-2.



Table E-8. Large-scale industry on Soviet territory, 1913 to 1927/28: Food, beverages, and narcotics, physical units

|         | Beet<br>sugar  | Vinegar | Candle<br>wax | Gly-<br>cerin | Cigar-<br>ettes | Makh-<br>orka | Butter      | Beer           | Starch      | Molasses    | Flour          | Groats      | Raw<br>spirit  |
|---------|----------------|---------|---------------|---------------|-----------------|---------------|-------------|----------------|-------------|-------------|----------------|-------------|----------------|
|         | <i>Tons</i>    | *       | *             | <i>Tons</i>   | <i>Units</i>    | <i>Tons</i>   | <i>Tons</i> | <i>Hectol.</i> | <i>Tons</i> | <i>Tons</i> | <i>Tons</i>    | <i>Tons</i> | <i>Hectol.</i> |
|         | <i>million</i> |         |               |               | <i>trillion</i> |               |             | <i>000</i>     |             |             | <i>million</i> | <i>000</i>  | <i>000</i>     |
| 1913    | 1794           | 7257    | 19100         | 4980          | 22.1            | 78676         | ...         | 8064           | 123673      | 54154       | 4938           | 218631      | 11564          |
| 1914    | 2130           | 5242    | 16348         | 17707         | 25.7            | 84654         | ...         | 5015           | 114357      | 110241      | 5496           | 243365      | 13443          |
| 1915    | 2578           | 6634    | 12482         | 15561         | 31.1            | 73304         | ...         | 136            | 97418       | 111027      | 7305           | 321582      | 6028           |
| 1916    | 2354           | 3833    | 10467         | 16184         | 29.4            | 82330         | ...         | ...            | 77578       | 93664       | 3888           | 172126      | 2005           |
| 1917    | 2030           | 1556    | 4292          | 2637          | 22.0            | 81564         | ...         | ...            | 58495       | 66996       | ...            | ...         | 476            |
| 1918    | 1166           | 770     | 2817          | 2850          | 12.7            | 28468         | ...         | ...            | 13497       | 30304       | ...            | ...         | ...            |
| 1919    | 394            | 442     | ...           | ...           | 12.0            | 18722         | ...         | ...            | 9370        | 17331       | ...            | ...         | 60             |
| 1920    | 98             | 246     | ...           | ...           | 4.8             | 21384         | ...         | ...            | 5831        | 8354        | 2977           | 203348      | 309            |
| 1921    | 65             | ...     | ...           | ...           | 5.1             | 11923         | 26754       | ...            | ...         | ...         | ...            | ...         | 504            |
| 1922    | 241            | ...     | 131           | 98            | 12.6            | 13252         | 55995       | ...            | 35415       | 5209        | ...            | ...         | 216            |
| 1922/23 | 248            | 410     | 573           | 442           | 10.8            | 19546         | 87652       | 989            | ...         | 17593       | 2673           | 182266      | 280            |
| 1923/24 | 499            | 770     | 1491          | 704           | 13.0            | 30599         | 127506      | 2276           | 51861       | ...         | 3524           | 180076      | 220            |
| 1924/25 | 753            | 983     | 3636          | 1769          | 26.3            | 46506         | 219320      | 2531           | 63702       | 20115       | 4231           | 277972      | 1004           |
| 1925/26 | 1507           | 1523    | 5111          | 3112          | 37.3            | 81458         | 327034      | 4084           | 99168       | 22277       | 5881           | 358499      | 4106           |
| 1926/27 | 1285           | 1770    | 4346          | 4310          | 40.7            | 82486         | 252922      | 4181           | 119320      | 26995       | 7060           | 250151      | 4726           |
| 1927/28 | 1637           | ...     | ...           | ...           | 49.0            | 83815         | 335070      | ...            | ...         | ...         | 6753           | 300000      | 5205           |

Source: AS Table E-2.

Table E-9. Large-scale industry on Soviet territory, 1913 to 1927/28: Leather and fur, physical units

|         | Large<br>hides | Small<br>hides | Foot-<br>wear | Pig<br>bristle |
|---------|----------------|----------------|---------------|----------------|
|         | <i>Units</i>   | <i>Units</i>   | <i>Pairs</i>  | <i>Tons</i>    |
|         | <i>000</i>     | <i>000</i>     | <i>000</i>    |                |
| 1913    | 570            | 1203           | 8349          | 491            |
| 1914    | 1021           | 4872           | 9743          | 491            |
| 1915    | 1156           | 4353           | 8705          | 459            |
| 1916    | 1100           | 4919           | 9837          | 508            |
| 1917    | 1049           | 3587           | 7173          | 491            |
| 1918    | 3140           | 4764           | 4551          | 410            |
| 1919    | 2613           | 4517           | 3105          | 164            |
| 1920    | 2466           | 3665           | 2638          | 49             |
| 1921    | 3416           | 3274           | 3361          | 165            |
| 1922    | 3510           | 2856           | 3442          | 357            |
| 1922/23 | 4973           | 4676           | 4070          | 606            |
| 1923/24 | 6249           | 5379           | 4568          | 1294           |
| 1924/25 | 7385           | 9651           | 8200          | 1572           |
| 1925/26 | 8397           | 12521          | 10827         | 1376           |
| 1926/27 | 10163          | 13347          | 17035         | ...            |
| 1927/28 | 11554          | 15643          | 26246         | ...            |

Source: AS Table E-2.

**Table E-10. Large-scale industry on Soviet territory, 1913 to 1927/28: Cotton textiles, physical units**

|         | Un-bleached |               |
|---------|-------------|---------------|
|         | Yarn        | cloth         |
|         | <i>Tons</i> | <i>Metres</i> |
|         |             | <i>000</i>    |
| 1913    | 270770      | 250064        |
| 1914    | 270311      | ...           |
| 1915    | 298207      | ...           |
| 1916    | 297945      | ...           |
| 1917    | 209638      | 120188        |
| 1918    | 118906      | 92992         |
| 1919    | 17986       | 15266         |
| 1920    | 13514       | 11984         |
| 1921    | 21819       | 10008         |
| 1922    | 71501       | 33118         |
| 1922/23 | 74394       | 65440         |
| 1923/24 | 101893      | 84196         |
| 1924/25 | 185050      | 157330        |
| 1925/26 | 240826      | 201857        |
| 1926/27 | 278101      | 237778        |
| 1927/28 | 316878      | 256836        |

Source: As Table E-2.

**Table E-11. Large-scale industry on Soviet territory, 1913 to 1927/28: Woollen textiles, physical units**

|         | Un-bleached |               | Finished fabric |
|---------|-------------|---------------|-----------------|
|         | Yarn        | cloth         |                 |
|         | <i>Tons</i> | <i>Metres</i> | <i>Metres</i>   |
|         |             | <i>000</i>    | <i>000</i>      |
| 1913    | 46455       | 45063         | ...             |
| 1914    | 45521       | 44161         | ...             |
| 1915    | 46815       | 45407         | ...             |
| 1916    | 44244       | 44358         | ...             |
| 1917    | 32450       | 31483         | 78602           |
| 1918    | 24948       | 24194         | 60417           |
| 1919    | 9943        | 9632          | 24068           |
| 1920    | 8045        | 7338          | 18340           |
| 1921    | 6790        | 4583          | 14305           |
| 1922    | 13745       | 10694         | 23402           |
| 1922/23 | 14564       | 17237         | 29946           |
| 1923/24 | 19306       | 17855         | 33853           |
| 1924/25 | 27665       | 27664         | 51823           |
| 1925/26 | 32943       | 32943         | 66796           |
| 1926/27 | 41100       | 40606         | 85209           |
| 1927/28 | 52383       | 47240         | 78575           |

Source: As Table E-2.

**Table E-12. Large-scale industry on Soviet territory, 1913 to 1927/28: Silk textiles, physical units**

|         | Finished<br>fabrics |
|---------|---------------------|
|         | <i>Metres</i>       |
|         | <i>000</i>          |
| 1913    | ...                 |
| 1914    | ...                 |
| 1915    | ...                 |
| 1916    | ...                 |
| 1917    | ...                 |
| 1918    | ...                 |
| 1919    | 604                 |
| 1920    | 429                 |
| 1921    | 663                 |
| 1922    | 2245                |
| 1922/23 | 3542                |
| 1923/24 | 2161                |
| 1924/25 | 2212                |
| 1925/26 | 5588                |
| 1926/27 | 6468                |
| 1927/28 | 9776                |

Source: AS Table E-2.

**Table E-13. Large-scale industry on Soviet territory, 1913 to 1927/28: Flax and hemp textiles, physical units**

|         | Finished<br>fabrics |
|---------|---------------------|
|         | <i>Metres</i>       |
|         | <i>000</i>          |
| 1913    | 53253               |
| 1914    | 66751               |
| 1915    | 70076               |
| 1916    | 61198               |
| 1917    | 42360               |
| 1918    | 22605               |
| 1919    | 12367               |
| 1920    | 13104               |
| 1921    | 6605                |
| 1922    | 26678               |
| 1922/23 | 29402               |
| 1923/24 | 39038               |
| 1924/25 | 47536               |
| 1925/26 | 66003               |
| 1926/27 | 66860               |
| 1927/28 | 61979               |

Source: AS Table E-2.

**Table E-14. Large-scale industry on Soviet territory, 1913 to 1927/28: Paper and printing, physical units**

|         | <u>Cartons</u> |
|---------|----------------|
|         | <i>Tons</i>    |
| 1913    | 38216          |
| 1914    | 34055          |
| 1915    | 28764          |
| 1916    | 19657          |
| 1917    | 11188          |
| 1918    | 4714           |
| 1919    | 2277           |
| 1920    | 1854           |
| 1921    | 1553           |
| 1922    | 2935           |
| 1922/23 | 9422           |
| 1923/24 | 12427          |
| 1924/25 | 20168          |
| 1925/26 | 26536          |
| 1926/27 | 37772          |
| 1927/28 | 35460          |

Source: AS Table E-2.

## Appendix F. Comparative and Long-Run Data\*

**Table F-1. GDP in 1913, 1917, and 1928: selected European countries in international dollars at 1990 prices and per cent**

|                | GDP per  | GDP, total, per |      |
|----------------|----------|-----------------|------|
|                | head, \$ | cent of 1913    |      |
|                | 1913     | 1917            | 1928 |
| United Kingdom | 4921     | 113%            | 109% |
| Belgium        | 4220     | 84%             | 127% |
| Germany        | 3648     | 76%             | 111% |
| France         | 3485     | 79%             | 126% |
| Austria        | 3465     | 67%             | 104% |
| Finland        | 2111     | 77%             | 144% |
| Hungary        | 2098     | 75%             | 125% |
| Czechoslovakia | 2096     | ...             | 148% |
| Romania        | 1741     | ...             | 77%  |
| Greece         | 1592     | 55%             | 161% |
| Bulgaria       | 1534     | ...             | 99%  |
| Russia         | 1488     | 80%             | 110% |
| Turkey         | 1213     | 75%             | 85%  |
| Yugoslavia     | 1057     | ...             | 128% |

Source:

All figures are from or based on estimates by Angus Maddison at <http://www.ggd.net/maddison/>, except as follows: UK (1917) from Broadberry and Howlett (2005, p. 208); Germany (1917) from Ritschl (2005, p. 45, midpoint of columns VI and VII); France (1917) from Hautcoeur (2005, p. 171); Austria and Hungary (1917) from Schulze (2005, p. 83); USSR (1917 and 1928) from Table 8; Turkey (1917) is based on the statement by Pamuk (2005, p. 120) that "by 1918 the GDP of the empire had declined had declined by at least 30 per cent, and perhaps 40 per cent or more, from its prewar level."

---

\* Not for publication.

Table F-2. Ln GDP per capita in 1913 and average annual GDP per capita growth in 1913 to 1928: selected countries

|                | Annual<br>average<br>growth of<br>GDP per<br>head<br>1913-1928 | Natural<br>log of<br>GDP per<br>head in<br>1913 and<br>1990 GK\$ | Great<br>War<br>dummy |                     | Annual<br>average<br>growth of<br>GDP per<br>head<br>1913-1928 | Natural<br>log of<br>GDP per<br>head in<br>1913 and<br>1990 GK\$ | Great<br>War<br>dummy |
|----------------|--|--|-----------------------|---------------------|--|--|-----------------------|
| United Kingdom | 0.57%  | 8.50127  | 1                     | Spain               | 1.52%  | 7.62852  | 0                     |
| Belgium        | 1.31%  | 8.34759  | 1                     | Australia           | 0.37%  | 8.54811  | 1                     |
| Germany        | 0.76%  | 8.20194  | 1                     | New Zealand         | -0.01%   | 8.54714  | 1                     |
| France         | 1.60%  | 8.15622  | 1                     | Canada              | 1.01%  | 8.39999  | 1                     |
| Austria        | 0.36%  | 8.15047  | 1                     | United States       | 1.43%  | 8.57565  | 1                     |
| Finland        | 1.66%  | 7.65492  | 1                     | Argentina           | 0.82%  | 8.24197  | 0                     |
| Hungary        | 0.94%  | 7.64874  | 1                     | Brazil              | 2.37%  | 6.69827  | 1                     |
| Czechoslovakia | 2.34%  | 7.64779  | 1                     | Chile               | 0.73%  | 8.00236  | 0                     |
| Romania        | -2.34%   | 7.46222  | 1                     | Colombia            | 1.25%  | 7.11964  | 0                     |
| Greece         | 2.26%  | 7.37275  | 1                     | Mexico              | 0.46%  | 7.45703  | 0                     |
| Bulgaria       | -1.53%   | 7.33563  | 1                     | Peru                | 3.54%  | 6.93925  | 1                     |
| Russia         | -0.24%   | 7.30519  | 1                     | Uruguay             | 1.10%  | 8.10470  | 1                     |
| Turkey         | -0.88%   | 7.10085  | 1                     | Venezuela           | 6.79%  | 7.00670  | 0                     |
| Yugoslavia     | 1.45%  | 6.96319  | 1                     | India               | 0.32%  | 6.51175  | 1                     |
| Denmark        | 1.34%  | 8.27180  | 0                     | Indonesia and Timor | 1.71%  | 6.77308  | 0                     |
| Italy          | 1.08%  | 7.84932  | 1                     | Japan               | 2.41%  | 7.23490  | 1                     |
| Netherlands    | 2.30%  | 8.30623  | 0                     | Philippines         | 2.29%  | 6.89568  | 1                     |
| Norway         | 1.59%  | 7.80262  | 0                     | South Korea         | 2.10%  | 6.76734  | 1                     |
| Sweden         | 1.56%  | 8.03041  | 0                     | Taiwan              | 2.72%  | 6.59578  | 1                     |
| Switzerland    | 2.46%  | 8.35843  | 0                     | Malaysia            | 2.89%  | 6.80240  | 1                     |
| Ireland        | 0.00%  | 7.91425  | 1                     | Sri Lanka           | 0.12%  | 7.11802  | 1                     |
| Portugal       | 1.08%  | 7.13090  | 1                     |                     |  |  |                       |

Source:

Rows from the UK to Yugoslavia as Table F-1; all other GDP figures are from or based on estimates by Angus Maddison at <http://www.ggdc.net/maddison/>.

Table F-2, note 1. Regression results

Dependent variable is GDP per head growth, 1913 to 1928 in natural logs

|   | 1       | 2       | 3         | 4         | 5       | 6        | 7         | 8         |
|---|---------|---------|-----------|-----------|---------|----------|-----------|-----------|
|   | OLS     | OLS     | OLS       | OLS       | OLS     | OLS      | OLS       | OLS       |
| In GDP per capita in 1913                   | -0.005* | -0.006* | -0.006*   | -0.007**  | -0.004* | -0.005** | -0.005*   | -0.005*   |
|   | 0.003   | 0.003   | 0.003     | 0.003     | 0.003   | 0.002    | 0.003     | 0.002     |
| World War I dummy                           |         | -0.009* |           | -0.009    |         | -0.004   |           | -0.004    |
|   |         | 0.005   |           | 0.005     |         | 0.003    |           | 0.003     |
| Soviet Union dummy                          |         |         | -0.018*** | -0.015*** |         |          | -0.016*** | -0.015*** |
|   |         |         | 0.003     | .003      |         |          | 0.002     | 0.002     |
| Constant                                    | 0.054** | 0.068** | .057**    | 0.07**    | 0.045** | 0.053*** | 0.049**   | 0.055***  |
|   | 0.024   | 0.027   | 0.025     | 0.027     | 0.020   | 0.019    | 0.020     | 0.019     |
| Excluding outliers<br>(Venezuela and India) | No      | No      | No        | No        | Yes     | Yes      | Yes       | Yes       |
| R-squared                                   | 0.06    | 0.14    | 0.14      | 0.17      | 0.05    | 0.08     | 0.10      | 0.12      |
| N   | 43      | 43      | 43        | 43        | 41      | 41       | 41        | 41        |

Note: robust standard errors are reported

Table F-3. Real national income per head in the former Russian Empire and USSR, 1885 to 2006

|      | Maddison,<br>inter-           |                           |                                |                                |      | Maddison,<br>inter-           |                           |                                |                                |
|------|-------------------------------|---------------------------|--------------------------------|--------------------------------|------|-------------------------------|---------------------------|--------------------------------|--------------------------------|
|      | Gregory,<br>rubles of<br>1913 | M&H,<br>rubles of<br>1913 | national<br>dollars<br>of 1990 | Harrison,<br>rubles of<br>1937 |      | Gregory,<br>rubles of<br>1913 | M&H,<br>rubles of<br>1913 | national<br>dollars<br>of 1990 | Harrison,<br>rubles of<br>1937 |
| 1885 | 72.5                          | ...                       | ...                            | ...                            | 1915 | ...                           | 119.9                     | ...                            | ...                            |
| 1886 | 69.7                          | ...                       | ...                            | ...                            | 1916 | ...                           | 106.6                     | ...                            | ...                            |
| 1887 | 81.5                          | ...                       | ...                            | ...                            | 1917 | ...                           | 93.6                      | ...                            | ...                            |
| 1888 | 78.4                          | ...                       | ...                            | ...                            | 1918 | ...                           | 57.3                      | ...                            | ...                            |
| 1889 | 72.9                          | ...                       | ...                            | ...                            | 1919 | ...                           | 49.4                      | ...                            | ...                            |
| 1890 | 72.6                          | ...                       | ...                            | ...                            | 1920 | ...                           | 49.6                      | ...                            | ...                            |
| 1891 | 66.5                          | ...                       | ...                            | ...                            | 1921 | ...                           | 45.4                      | ...                            | ...                            |
| 1892 | 72.8                          | ...                       | ...                            | ...                            | 1922 | ...                           | 52.7                      | ...                            | ...                            |
| 1893 | 82.5                          | ...                       | ...                            | ...                            | 1923 | ...                           | 60.7                      | ...                            | ...                            |
| 1894 | 93.8                          | ...                       | ...                            | ...                            | 1924 | ...                           | 76.9                      | ...                            | ...                            |
| 1895 | 86.8                          | ...                       | ...                            | ...                            | 1925 | ...                           | 96.1                      | ...                            | ...                            |
| 1896 | 95.6                          | ...                       | ...                            | ...                            | 1926 | ...                           | 107.9                     | ...                            | ...                            |
| 1897 | 94.0                          | ...                       | ...                            | ...                            | 1927 | ...                           | 112.4                     | ...                            | ...                            |
| 1898 | 96.5                          | ...                       | ...                            | ...                            | 1928 | ...                           | 118.2                     | 1370                           | ...                            |
| 1899 | 102.4                         | ...                       | ...                            | ...                            | 1929 | ...                           | ...                       | 1386                           | ...                            |
| 1900 | 100.2                         | ...                       | 1237                           | ...                            | 1930 | ...                           | ...                       | 1448                           | ...                            |
| 1901 | 102.7                         | ...                       | ...                            | ...                            | 1931 | ...                           | ...                       | 1462                           | ...                            |
| 1902 | 111.6                         | ...                       | ...                            | ...                            | 1932 | ...                           | ...                       | 1439                           | ...                            |
| 1903 | 103.9                         | ...                       | ...                            | ...                            | 1933 | ...                           | ...                       | 1493                           | ...                            |
| 1904 | 114.9                         | ...                       | ...                            | ...                            | 1934 | ...                           | ...                       | 1630                           | ...                            |
| 1905 | 101.7                         | ...                       | ...                            | ...                            | 1935 | ...                           | ...                       | 1864                           | ...                            |
| 1906 | 97.2                          | ...                       | ...                            | ...                            | 1936 | ...                           | ...                       | 1991                           | ...                            |
| 1907 | 93.4                          | ...                       | ...                            | ...                            | 1937 | ...                           | ...                       | 2156                           | ...                            |
| 1908 | 102.0                         | ...                       | ...                            | ...                            | 1938 | ...                           | ...                       | 2150                           | ...                            |
| 1909 | 105.9                         | ...                       | ...                            | ...                            | 1939 | ...                           | ...                       | 2237                           | ...                            |
| 1910 | 113.0                         | ...                       | ...                            | ...                            | 1940 | ...                           | ...                       | 2144                           | 1309                           |
| 1911 | 104.4                         | ...                       | ...                            | ...                            | 1941 | ...                           | ...                       | ...                            | ...                            |
| 1912 | 112.8                         | ...                       | ...                            | ...                            | 1942 | ...                           | ...                       | ...                            | ...                            |
| 1913 | 118.5                         | 122.0                     | 1488                           | ...                            | 1943 | ...                           | ...                       | ...                            | 1363                           |
| 1914 | ...                           | 116.5                     | ...                            | ...                            | 1944 | ...                           | ...                       | ...                            | ...                            |
|      |                               |                           |                                |                                | 1945 | ...                           | ...                       | ...                            | 1226                           |



Table F-3 (continued)

|      | Maddison,<br>inter-           |                           |                                |                                | Maddison,<br>inter-           |                           |                                |                                |     |
|------|-------------------------------|---------------------------|--------------------------------|--------------------------------|-------------------------------|---------------------------|--------------------------------|--------------------------------|-----|
|      | Gregory,<br>rubles of<br>1913 | M&H,<br>rubles of<br>1913 | national<br>dollars<br>of 1990 | Harrison,<br>rubles of<br>1937 | Gregory,<br>rubles of<br>1913 | M&H,<br>rubles of<br>1913 | national<br>dollars<br>of 1990 | Harrison,<br>rubles of<br>1937 |     |
| 1946 | ...                           | ...                       | 1913                           | ...                            | 1976                          | ...                       | ...                            | 6363                           | ... |
| 1947 | ...                           | ...                       | 2126                           | ...                            | 1977                          | ...                       | ...                            | 6454                           | ... |
| 1948 | ...                           | ...                       | 2402                           | ...                            | 1978                          | ...                       | ...                            | 6559                           | ... |
| 1949 | ...                           | ...                       | 2623                           | ...                            | 1979                          | ...                       | ...                            | 6472                           | ... |
| 1950 | ...                           | ...                       | 2841                           | ...                            | 1980                          | ...                       | ...                            | 6427                           | ... |
| 1951 | ...                           | ...                       | 2806                           | ...                            | 1981                          | ...                       | ...                            | 6432                           | ... |
| 1952 | ...                           | ...                       | 2937                           | ...                            | 1982                          | ...                       | ...                            | 6535                           | ... |
| 1953 | ...                           | ...                       | 3013                           | ...                            | 1983                          | ...                       | ...                            | 6684                           | ... |
| 1954 | ...                           | ...                       | 3106                           | ...                            | 1984                          | ...                       | ...                            | 6708                           | ... |
| 1955 | ...                           | ...                       | 3313                           | ...                            | 1985                          | ...                       | ...                            | 6707                           | ... |
| 1956 | ...                           | ...                       | 3566                           | ...                            | 1986                          | ...                       | ...                            | 6921                           | ... |
| 1957 | ...                           | ...                       | 3576                           | ...                            | 1987                          | ...                       | ...                            | 6950                           | ... |
| 1958 | ...                           | ...                       | 3777                           | ...                            | 1988                          | ...                       | ...                            | 7040                           | ... |
| 1959 | ...                           | ...                       | 3669                           | ...                            | 1989                          | ...                       | ...                            | 7109                           | ... |
| 1960 | ...                           | ...                       | 3945                           | ...                            | 1990                          | ...                       | ...                            | 6890                           | ... |
| 1961 | ...                           | ...                       | 4098                           | ...                            | 1991                          | ...                       | ...                            | 6419                           | ... |
| 1962 | ...                           | ...                       | 4140                           | ...                            | 1992                          | ...                       | ...                            | 5470                           | ... |
| 1963 | ...                           | ...                       | 3985                           | ...                            | 1993                          | ...                       | ...                            | 4928                           | ... |
| 1964 | ...                           | ...                       | 4439                           | ...                            | 1994                          | ...                       | ...                            | 4247                           | ... |
| 1965 | ...                           | ...                       | 4634                           | ...                            | 1995                          | ...                       | ...                            | 4025                           | ... |
| 1966 | ...                           | ...                       | 4804                           | ...                            | 1996                          | ...                       | ...                            | 3911                           | ... |
| 1967 | ...                           | ...                       | 4963                           | ...                            | 1997                          | ...                       | ...                            | 3995                           | ... |
| 1968 | ...                           | ...                       | 5202                           | ...                            | 1998                          | ...                       | ...                            | 3907                           | ... |
| 1969 | ...                           | ...                       | 5225                           | ...                            | 1999                          | ...                       | ...                            | 4098                           | ... |
| 1970 | ...                           | ...                       | 5575                           | ...                            | 2000                          | ...                       | ...                            | 4454                           | ... |
| 1971 | ...                           | ...                       | 5667                           | ...                            | 2001                          | ...                       | ...                            | 4741                           | ... |
| 1972 | ...                           | ...                       | 5643                           | ...                            | 2002                          | ...                       | ...                            | 5006                           | ... |
| 1973 | ...                           | ...                       | 6059                           | ...                            | 2003                          | ...                       | ...                            | 5397                           | ... |
| 1974 | ...                           | ...                       | 6176                           | ...                            | 2004                          | ...                       | ...                            | 5852                           | ... |
| 1975 | ...                           | ...                       | 6135                           | ...                            | 2005                          | ...                       | ...                            | 6264                           | ... |
|      |                               |                           |                                |                                | 2006                          | ...                       | ...                            | 6766                           | ... |

## Sources:

Gregory, 1885-1913 (Russian Empire territory): Gregory (1980, pp. 56-57).

M&H, 1913-1928 (Soviet interwar territory): Table 5.

Maddison, 1900, 1913, 1928-1940, and 1946-2006 (Soviet post-1945 territory): <http://www.ggd.net/maddison/>.

Harrison, 1940, 1943, and 1945 (Soviet controlled territory): GDP from Harrison (1996, p. 92); population from Harrison (1996, p. 104), and Andreev, Darskii, and Khar'kova (1990, pp. 25-27).

## References

### *Statistical publications*

- CIA 1982. *USSR: Measures of Economic Growth and Development, 1950-1980*. Washington, DC: U.S. Government Printing Office.
- CIA. 1990. *Measures of Soviet Gross National Product in 1982 Prices*. Washington, DC: US Government Printing Office.
- Goskomstat. 1995. *Rossiiskii statisticheskii ezhegodnik*. Moscow: Goskomstat Rossii.
- Goskomstat. 2000. *Rossiiskii statisticheskii ezhegodnik*. Moscow: Goskomstat Rossii.
- Gosplan. 1929a. *Kontrol'nye tsifry narodnogo khoziaistva SSSR na 1928/29 g.* Moscow: Planovoe khoziaistvo.
- Gosplan. 1929b. *Piatiletanii plan narodno-khoziaistvennogo stroitel'stva SSSR*. Vols 1-3. Moscow: Planovoe khoziaistvo.
- Narkomfin. 1922. *Narodnoe khoziaistvo v 1916 godu*. Issue no. 7. *Svodnye statisticheskie tablitsy za 1913-1916 gg.* Petrograd.
- TsSK. 1914. *Statisticheskii ezhegodnik Rossii v 1913 g.* St Petersburg: TsSK.
- TsSK. 1915. *Statisticheskii ezhegodnik Rossii v 1914 g.* St Petersburg: TsSK.
- TsSK. 1916. *Statisticheskii ezhegodnik Rossii v 1915 g.* St Petersburg: TsSK.
- TsSK. 1918. *Statisticheskii ezhegodnik Rossii v 1916 g.* St Petersburg: TsSK.
- TsSU. 1921a. *Trudy TsSU*. Vol. 7, issue no. 1. *Statisticheskii sbornik za 1913-17 gg.* Moscow: TsSU RSFSR.
- TsSU. 1921b. *Trudy TsSU*. Vol. 8, issue no. 1. *Statisticheskii ezhegodnik 1918-1920 gg.* Moscow: TsSU RSFSR.
- TsSU. 1924a. *Narodnoe khoziaistvo SSSR v tsifrakh. Kratkii spravochnik*. Moscow: TsSU SSSR.
- TsSU. 1924b. *Trudy TsSU*. Vol. 18. *Sbornik statisticheskikh svedenii po SSSR. 1918-1923 gg. Za piat' let raboty TsSU*. Moscow: TsSU SSSR.
- TsSU. 1927. *Itogi desiatiletiia Sovetskoi vlasti v tsifrakh. 1917-1927*. Moscow: TsSU SSSR.
- TsSU. 1929a. *Statisticheskii spravochnik SSSR za 1928 g.* Moscow: TsSU SSSR.
- TsSU. 1929b. *Sel'skoe khoziaistvo SSSR. 1925-1928*. Moscow: TsSU SSSR.
- TsSU. 1957. *Promyshlennost' SSSR. Statisticheskii sbornik*. Moscow: Gosstatizdat.
- TsSU. 1960. *Selskoe khoziaistvo SSSR. Statisticheskii sbornik*. Moscow: Gosstatizdat.
- TsSU. 1964. *Promyshlennost' SSSR. Statisticheskii sbornik*. Moscow: Statistika.
- TsSU. 1973. *Narodnoe khoziaistvo SSSR. 1922-1972. Iubileinyi statisticheskii ezhegodnik*. Moscow: Statistika.
- TsSU. 1987. *Narodnoe khoziaistvo za 70 let. Iubileinyi statisticheskii ezhegodnik*. Moscow: Finansy i statistika.
- TsUNKhU. 1939. *SSSR i kapitalisticheskie strany. Statisticheskii sbornik tekhniko-ekonomicheskikh pokazatelei narodnogo khoziaistva SSSR i kapitalisticheskikh stran za 1913-37 gg.* Moscow: Gosplanizdat.
- UN. 1971. *Basic Principles of the System of Balances of the National Economy*. Studies in Methods, Series F, no. 17. New York: United Nations Statistical Office.
- UN. 2009. *System of National Accounts 2008*. New York: European Commission-International Monetary Fund-Organization for Economic Cooperation and Development-United Nations-World Bank.

### *Secondary sources*

- Note: Relevant works that were prepared for publication in Soviet Russia in the early 1920s, suppressed by the censorship at the time, and published only decades later, include Kafengauz (1994) and Litoshenko (2001).
- Adamets, S. 2003. *Guerre civile et famine en Russie: Le pouvoir bolchévique et la population face à la catastrophe démographique de 1917-1923*. Paris: Institute d'études slaves.
- Akademii nauk. 1960. *Sovetskoe narodnoe khoziaistvo v 1921-25 gg.* Moscow: Nauka.
- Allen, Robert C. 2003. *Farm to Factory: A Reinterpretation of the Soviet Industrial Revolution*. Princeton: Princeton University Press.
- Andreev, E. M., L. E. Darskii, and T. L. Kharkova. 1990. Otsenka liudskikh pter' v period Velikoi Otechestvennoi voiny. *Vestnik statistiki* no. 10, pp. 25-27.
- Andreev, E. M., L. E. Darskii, and T. L. Kharkova. 1993. *Naselenie Sovetskogo Soiuz, 1922-1991*. Moscow: Nauka.
- Antonio Ortega, José, and Javier Silvestre. 2006. Las consecuencias demográficas. In *La Economía de la Guerra Civil*, pp. 53-106. Madrid: Marcial Pons.
- Bergson, Abram. 1961. *The Real National Income of Soviet Russia Since 1928*. Cambridge, MA: Harvard University Press.
- Blattman, Christopher, and Edward Miguel. 2010. Civil War. *Journal of Economic Literature* 48:1, pp. 3-57.
- Boettke, Peter J. 1990. *The Political Economy of Soviet Socialism: the Formative Years, 1918-1928*. Boston: Kluwer Academic.
- Boiarskii, A. Ia. 1948, reprinted 1975. K voprosu o estestvennom dvizhenii naseleniia v Rossii i v SSSR v 1915-1923 gg. First published in *Uchenye zapiski Moskovskogo ekonomiko-statisticheskogo instituta*, vol. 1. Moscow. Reprinted in *Naselenie i metody ego izucheniia. Sbornik nauchnykh trudov*, pp. 225-238. By A. Ia. Boiarskii. Moscow: Statistika.
- Brainerd, Elizabeth, and David M. Cutler. 2005. Autopsy on an Empire: Understanding Mortality in Russia and the Former Soviet Union. *Journal of Economic Perspectives* 19:1, pp. 107-130.
- Broadberry, Stephen. 2006. *Market Services and the Productivity Race, 1850-2000: British Performance in International Perspective*. Cambridge: Cambridge University Press.
- Brown, J. David, John S. Earle, and Álmos Telegdy. 2010. Employment and Wage Effects of privatisation: Evidence from Hungary, Romania, Russia, and Ukraine. *Economic Journal* 120:545, pp. 683-708.
- Carr, E. H. 1952. *The Bolshevik Revolution, 1917-1923*, vol. 2, London: Macmillan
- Carr, E. H. 1959. *Socialism in One Country, 1924-1926*, vol. 2. London: Macmillan.
- Collier, Irwin L. 2003. The 'Welfare Standard' and Soviet Consumers. *Comparative Economic Studies* 47:2, pp. 333-345.
- Collier, Paul, and Anke Hoeffler. 2004. Greed and Grievance in Civil War. *Oxford Economic Papers* 56:4, pp. 563-595.
- Collier, Paul, and Anke Hoeffler. 2007. Civil War. In *Handbook of Defense Economics*, Volume 2, Defense in a Globalized World, pp. 711-740. Edited by Todd Sandler and Keith Hartley. Amsterdam and Oxford: Elsevier.
- Crafts, Nicholas, and Gianni Toniolo. 1996. Postwar Growth: An Overview. In *Economic Growth in Europe Since 1945*, pp. 1-37. Edited by Nicholas Crafts and Gianni Toniolo. Cambridge: Cambridge University Press.
- Crafts, Nicholas, and Terence C. Mills. 1996. Europe's Golden Age: an Econometric Investigation of Changing Trend Rates of Growth. In *Quantitative Aspects of Europe's Postwar Growth*, pp. 415-31. Edited by Bart van Ark and Nicholas Crafts. Cambridge: Cambridge University Press.

- Davies, R. W. 1989. Economic and Social Policy in the USSR, 1917–41. In *The Cambridge Economic History of Europe*, vol. VIII. *The Industrial Economies: The Development of Economic and Social Policies*, pp. 000-000. Edited by Peter Mathias and Sidney Pollard. Cambridge (England): Cambridge University Press.
- Davies, R. W. 1990. Introduction: From Tsarism to NEP. In *From Tsarism to the New Economic Policy: Continuity and Change in the Economy of the USSR*, pp. 1-28. Edited by R. W. Davies. Basingstoke and London: Macmillan.
- Davies, R. W. 1994. Industry. In *The Economic Transformation of the Soviet Union, 1913-1945*, pp. 131-157. Edited by R. W. Davies, Mark Harrison, and S. G. Wheatcroft. Cambridge: Cambridge University Press.
- Davies, R. W. 2004. Review of *Farm to Factory: A Reinterpretation of the Soviet Industrial Revolution*, by Robert C. Allen. EH.NET.  
URL [http://eh.net/book\\_reviews/farm-factory-reinterpretation-soviet-industrial-revolution](http://eh.net/book_reviews/farm-factory-reinterpretation-soviet-industrial-revolution).
- Davies, R.W., and S. G. Wheatcroft. 2004. The Industrialisation of Soviet Russia, 5: The Years of Hunger: Soviet Agriculture, 1931-1933. Basingstoke: Palgrave.
- Demoscope. 2009. Smertnost' v Rossii skvoz' prizmu privatizatsii. *Demoscope Weekly*, no. 363-364. February 2 to 15.  
URL <http://demoscope.ru/weekly/2009/0363/lisa01.php>.
- Direktivy. 1978. *Direktivy komandovaniia frontov Krasnoi armii (1917-1922)*, vol. 4. Moscow.
- Dobb, Maurice. 1949. *Soviet Economic Development since 1917*. London: Routledge and Kegan Paul.
- Drobizhev, V. Z., A. K. Sokolov, and V. A. Ustinov. 1975. *Rabochii klass Sovetskoj Rossii v pervii god proletarskoj diktatury (Opyt sravnitel'nogo analiza po materialam professional'noi perepisi 1918 g.)*. Moscow: Izdatel'stvo MGU.
- Earle, John S. 2009. Mass Privatisation and Mortality. *The Lancet* 373 (April 11), p. 1247
- Earle, John S., and Scott Gehlbach. 2010. Did Mass Privatisation Really Increase Post-Communist Mortality? *The Lancet* 375 (January 30), p. 372.
- Ellman, Michael, and S. Maksudov. 1994. Soviet Deaths in the Great Patriotic War. *Europe-Asia Studies* 46:4, pp. 671-680.
- Ellman, Michael. 2000a. The 1947 Soviet Famine and the Entitlement Approach to Famines. *Cambridge Journal of Economics* 24:5, pp. 603-630.
- Ellman, Michael. 2000b. The Social Costs and Consequences of the Transformation Process. *Economic Survey of Europe* no. 2/3, pp. 125-145.
- Ellman, Michael. 2004. Soviet Industrialization: A Remarkable Success? *Slavic Review* 63: 4, pp. 841-849.
- Engerman, Stanley L. "The Economic Impact of the Civil War." *Explorations in Entrepreneurial History*, second series 3 (1966): 176-199 .
- Falkus, M. E. 1968. Russia's National Income, 1913: A Revaluation. *Economica* 35:137, pp. 52-73.
- Figes, Orlando. 1989. *Peasant Russia, Civil War: The Volga Countryside in revolution, 1917-1921*. Oxford: Oxford University Press.
- Gatrell, Peter, and Mark Harrison. 1993. The Russian and Soviet Economy in Two World Wars. *Economic History Review* 46:3, pp. 425-452.
- Gatrell, Peter. 1994. The First World War and War Communism, 1914-1920. In *The Economic Transformation of the Soviet Union, 1913-1945*, pp. 216-237. Edited by R. W. Davies, Mark Harrison, and S. G. Wheatcroft. Cambridge: Cambridge University Press.
- Gatrell, Peter. 1999. *A Whole Empire Walking: Refugees in Russia During the First World War*. Bloomington: Indiana University Press.

- Gatrell, Peter. 2005. Poor Russia, Poor Show: Mobilising a Backward Economy for War, 1913-1917. In *The Economics of World War I*, pp. 235-275. Edited by Stephen Broadberry and Mark Harrison. Cambridge: Cambridge University Press.
- Gerry, Christopher J., Tomasz M. Mickiewicz, and Zlatko Nikoloski. 2010. Did Mass Privatisation Really Increase Post-Communist Mortality? *The Lancet* 375 (January 30), p. 371.
- Gerschenkron, Alexander. 1951. *A Dollar Index of Soviet Machinery Output, 1927-28 to 1937*. Santa Monica, CA: Rand.
- Goland, Iu. M. 2006. *Diskussii ob ekonomicheskom politike v gody denezhnoi reform 1921-1924*. Moscow: Ekonomika.
- Goldin, Claudia, and Frank Lewis. "The Economic Costs of the American Civil War: Estimates and Implications." *Journal of Economic History* 35 (1975): 299-326.
- Golovin, N. N. 1930, reprinted 2001. *Voennye usiliia Rossii v mirovoi voine*. Moscow: Kuchkovo pole.
- Gregory, Paul R. 1982. *Russian National Income, 1885-1913*. Cambridge: Cambridge University Press.
- Gregory, Paul R. 1990. National income. In *From Tsarism to the New Economic Policy: continuity and change in the economy of the USSR*, pp. 237-47. Edited by R. W. Davies. Basingstoke and London: Macmillan.
- Groman, V. G. 1927. *Narodnoe khoziaistvo SSSR*. Moscow: Gosizdat.
- Gukhman, B. A. 1925. *Produktsiia i potreblenie SSSR*. Moscow: Gosplan.
- Gukhman, B. A. 1927. Dinamika promyshlennosti Rossii v sviazi s dinamikoi narodnogo khoziaistva. In *Promyshlennost' i narodnoe khoziaistvo: sbornik statei*. Edited by E. I. Kviring et al.
- Gukhman, B. A. 1928. *Produktsiia i potreblenie SSSR. K narodno-khoziaistvennomu balansu (1922/23 khoziaistvennyi god)*. With introduction by S. G. Strumilin. Moscow: Gosplan.
- Harrison, Mark. 1980. Why Did NEP Fail? *Economics of Planning* 16:2, pp. 57-67.
- Harrison, Mark. 1990. The Peasantry and Industrialization. In *From Tsarism to the New Economic Policy: Continuity and Change in the Economy of the USSR*, pp. 104-124. Edited by R. W. Davies. Basingstoke and London: Macmillan.
- Harrison, Mark. 1994. National Income. In *The Economic Transformation of the Soviet Union, 1913-1945*, pp. 38-56. Edited by R. W. Davies, Mark Harrison, and S. G. Wheatcroft. Cambridge: Cambridge University Press.
- Harrison, Mark. 1996. *Accounting for War: Soviet Production, Employment, and the Defence Burden, 1940-1945*. Cambridge, England: Cambridge University Press.
- Harrison, Mark. 2008. Prices in the Politburo, 1927: Market Equilibrium Versus the Use of Force. In *The Lost Transcripts of the Politburo: From Collective Rule to Stalin's Dictatorship*, pp. 224-246. Edited by Paul R. Gregory and Norman Naimark. New Haven: Yale University Press.
- Hessler, Julie. 2004. *A Social History of Soviet Trade: Trade Policy, Retail Practices, and Consumption, 1917-1953*. Princeton: Princeton University Press.
- Higgs, Robert V. 2006. *Depression, War and Cold War: Studies in Political Economy*. Oxford University Press.
- Il'iukhov, A. A. 2010. *Kak platili bol'sheviki: Politika sovetskoii vlasti v sfere oplaty truda v 1917-1941 gg*. Moscow: ROSSPEN.
- Jánosy, Ferenc. 1971. *The End of the Economic Miracle: Appearance and Reality in Economic Development*. White Plains, NY: International Arts and Sciences Press.
- Johnson, Simon, and Peter Temin. 1993. The Macroeconomics of NEP. *Economic History Review* 46:4, pp. 750-767.

- Kabanov, V. V. 1988. *Krest'ianskoe khoziaistvo v usloviakh "voennogo kommunizma."* Moscow: Nauka.
- Kafengaus, L. B. 1994. *Evolutsiia promyshlennogo proizvodstva Rossii (posledniaia tret' XIX – 30-e gody XX veka)*. Moscow: Epifaniia.
- Lih, Lars T. 1990. *Bread and Authority in Russia, 1914-1921*. Berkeley, CA: University of California Press.
- Litoshenko, L. N. 1925. *Natsional'nyi dokhod SSSR*. Moscow: Finansizdat.
- Litoshenko, L. N. 1927. The National Income of the Soviet Union. *Quarterly Journal of Economics* 42: 1, pp. 70-93.
- Litoshenko, L. N. 2001. *Sotsializatsiya zemli v Rossii*. Novosibirsk: Sibirskii khronograph.
- Maevskii, I. V. 1957. *Ekonomika russkoi promyshlennosti v usloviakh pervoi mirovoi voiny*. Moscow: Gospolitizdat.
- Malle, Silvana. 1985. *The Economic Organization of War Communism, 1918-1921*. Cambridge: Cambridge University Press.
- Maksudov, S. 1989. *Poteri naseleniia SSSR*. Benson: Chalidze Publications.
- Martín Aceña, Pablo. 2006. La economía de la guerra civil: perspectiva general y comparada. In *La Economía de la Guerra Civil*, pp. 13-52. Edited by Pablo Martín Aceña and Elena Martínez Ruiz. Madrid: Marcial Pons.
- McMeekin, Sean. 2009. *History's Greatest Heist: The Looting of Russia by the Bolsheviks*. New Haven: Yale University Press.
- Moorsteen, Richard, and Raymond P. Powell. 1966. *The Soviet Capital Stock, 1928-1962*. Homewood, IL: Irwin.
- Nove, Alec. 1992. *An Economic History of the USSR, 1917-1991*, 3rd edn. Harmondsworth (England): Penguin Books.
- Nutter, G. Warren. 1962. *The Growth of Industrial Production in the Soviet Union*. Princeton, NJ: National Bureau of Economic Research.
- Nutter, G. Warren. 1963. The Soviet Economy: Retrospect and Prospect. In *National Security: Political, Military, and Economic Strategies in the Decade Ahead*, pp. 000-000. Edited by David Abshire and Richard V. Allen. NY: Praeger.
- Ó Gráda, Cormac. 2007. Making Famine History. *Journal of Economic Literature* 45:1, pp. 5-38.
- Ofer, Gur. 1987. Soviet Economic Growth: 1928-1985. *Journal of Economic Literature* 25:4, pp. 1767-1833.
- Osokina, Elena. 2009. *Zoloto dlia industrializatsii: Torgsin*. Moscow: Rosspen.
- Poletaev, A. V. 1998. Ekonomicheskie krizisi v Rossii v XX veke (statisticheskoe issledovanie). in *Istoki. Voprosi istorii narodnogo khoziaistva i ekonomicheskoi mysli* vol. 3, pp. 186-256. Edited by Ia. I. Kuz'monov. Moscow: Higher Economic School.
- Poletaev, A. V., and I. M. Savel'ev. 2001. Sravnitel'nyi analiz dvukh sistemnykh krizisov v rossiiskoi istorii (1920-e i 1990-e gody). In *Ekonomicheskaiia istoriia. Ezhegodnik. 2000*, pp. 98-134. Moscow: Rosspen.
- Popov, Vladimir. 2010. The Long Road to Normalcy: Where Russia Now Stands. United Nations University, World Institute for Development Economics Research. Working Paper no. 2010/13.
- Prokopovich, S. N. 1918a. *Opyt ischisleniia narodnogo dokhoda 50 gubernii evropeiskoi Rossii v 1900-1913 gg.*
- Prokopovich, S. N. 1918b. *Voina i narodnoe khoziaistvo*. St Petersburg.
- Prokopovich, S. N. 1931. *The National Income of the U.S.S.R.* Memorandum no. 3, University of Birmingham.

- Putin, Vladimir. 2000. The State of Russia: A Way to an Effective State. The state of the nation address to the Federal Assembly of the Russian Federation, 8 July 2000. Moscow: Novosti. URL [http://www.un.int/russia/pressrel/2000/00\\_07\\_00.htm](http://www.un.int/russia/pressrel/2000/00_07_00.htm).
- Raleigh, Donald. 2006. The Russian Civil War, 1917-1922. In *The Cambridge History of Russia*. Vol. 3. *The Twentieth Century*, pp. 140-167. Edited by Ronald Grigor Suny. Cambridge: Cambridge University Press.
- Ransom, Roger L. 2001. Economics of the Civil War. *EH.Net Encyclopedia*. Edited by Robert Whaples. URL <http://eh.net/encyclopedia/article/ransom.civil.war.us>.
- Rosefielde, Steven. 2001. Premature Deaths: Russia's Radical Economic Transition in Soviet Perspective. *Europe-Asia Studies* 53:8, pp. 1159-1176.
- Rosefielde, Steven. 2005. Tea Leaves and Productivity: Bergsonian Norms for Gauging the Soviet Future. *Comparative Economic Studies* 47:2, pp. 249-273.
- Rosefielde, Steven, and Ralph W. Pfouts. 1995. Neoclassical Norms and the Valuation of National Product in the Soviet Union and Its Postcommunist Successor States. *Journal of Comparative Economics* 21:3, pp. 375-389.
- Sidorov, A. L. 1973. *Ekonomicheskoe polozhenie Rossii v godi pervoi mirovoj vojni*. Moscow.
- Sifman, R. I. 1977. Dinamika chislennosti naseleniia Rossii za 1897-1914 gg. In *Brachnost', rozhdaemost' i smertnost' v Rossii i SSSR*, pp. 62-82. Edited by A. G. Vishnevskii. Moscow: Statistika. URL [http://demoscope.ru/weekly/knigi/polka/gold\\_fund05.html](http://demoscope.ru/weekly/knigi/polka/gold_fund05.html).
- Stevenson, Betsey, and Justin Wolfers. 2008. Economic Growth and Subjective Well-Being: Reassessing the Easterlin Paradox. *Brookings Papers on Economic Activity* 2008:1, pp. 1-87.
- Stuckler, David, Lawrence King, and Martin McKee. 2009. Mass Privatisation and the Post-Communist Mortality Crisis: a Cross-National Analysis. *The Lancet* no. 373 (January 31), pp. 399-407.
- Stuckler, David, Lawrence King, and Martin McKee. Did Mass Privatisation Really Increase Post-Communist Mortality? – Authors' Reply. *The Lancet* 375 (January 30), pp 372-374.
- Tao Wenzhao. 2010. Zhongri zhanzheng yu taipingyang zhanzheng (The Sino-Japanese War and the Pacific War). In *Zhongri lishi gongtong yanjiu baogaoshu, zhongfang baogaoshu* (Chinese Report in the Joint Report of the Joint Japanese-Chinese Historical Research Project). Edited by Zhongri gongtong lishi yanjiu zhongfang weiyuanhui (The Chinese Committee of Sino-Japanese Joint Historical Research Committee). Beijing. URL [http://www.mofa.go.jp/mofaj/area/china/pdfs/rekishi\\_kk\\_c.pdf](http://www.mofa.go.jp/mofaj/area/china/pdfs/rekishi_kk_c.pdf).
- UN 2002. *International Migration Report 2002*. New York: UN Department of Economic and Social Affairs.
- UNICEF 2001. *Desiat' let perekhodnogo perioda*. Regional'nyi monitoringovyi doklad no. 8. Florence: UNICEF Innocenti Research Centre.
- Vainshtein, A. L. 1960. *Narodnoe bogatstvo i narodnokhoziaistvennoe nakoplenie predrevoliutsionnoi Rossii*. Moscow.
- Vainshtein, A. L. 1969. *Narodnyi dokhod Rossii i SSSR*. Moscow: Nauka.
- Varzar, V. E. 1929, published 1955. Indeks fizicheskogo ob'ema potrebleniia v SSSR. In *Kriticheskii analiz burzhuaznykh statisticheskikh publikatsii*, pp. 448-462. Edited by P. P. Maslov. Moscow: Akademii nauk SSSR.
- Vishnevskii, A. G., ed. 2006. *Demographicheskaiia modernizatsiia Rossii, 1900-2000*. Moscow: Novoe izdatel'stvo.
- Volkov, E. Z. 1930. *Dinamika narodonaseleniia SSSR za vosem'desiat let*. Moscow-Leningrad: Gosizdat.

- Volkov, S. V. 2003. *Beloe dvizhenie. Entsiklopediia grazhdanskoi voiny*. St Petersburg-Moscow: Neva-OLMA Press.
- Vorob'ev, N. Ya. 1923. *Izmeneniya v russkoi promishlennosti v period voini I revolutsii*. *Vestnik statistiki*, vol. 14, pp. 113-154.
- Vovsi, M. 1926. *Trud sluzhashchikh v SSSR. Statistiko-ekonomicheskii obzor*. Moscow.
- Westwood, J. N. 1990. The Railways. In *From Tsarism to the New Economic Policy: continuity and change in the economy of the USSR*, pp. 169-188. Edited by R. W. Davies. Basingstoke and London: Macmillan.
- Westwood, J. N. 1994. Transport. In *The Economic Transformation of the Soviet Union, 1913-1945*, pp. 158-181. Edited by R. W. Davies, Mark Harrison, and S. G. Wheatcroft. Cambridge: Cambridge University Press.
- Wheatcroft, S. G. 1990. Agriculture. In *From Tsarism to the New Economic Policy: continuity and change in the economy of the USSR*, pp. 79-103. Edited by R. W. Davies. Basingstoke and London: Macmillan.
- Wheatcroft, S. G., and R. W. Davies. 1994a. The Crooked Mirror of Soviet Economic Statistics. In *The Economic Transformation of the Soviet Union, 1913-1945*, pp. 24-37. Edited by R. W. Davies, Mark Harrison, and S. G. Wheatcroft. Cambridge: Cambridge University Press.
- Wheatcroft, S. G., and R. W. Davies. 1994b. Population. In *The Economic Transformation of the Soviet Union, 1913-1945*, pp. 57-80. Edited by R. W. Davies, Mark Harrison, and S. G. Wheatcroft. Cambridge: Cambridge University Press.
- Wheatcroft, S. G., and R. W. Davies. 1994c. Agriculture. In *The Economic Transformation of the Soviet Union, 1913-1945*, pp. 106-130. Edited by R. W. Davies, Mark Harrison, and S. G. Wheatcroft. Cambridge: Cambridge University Press.
- Wheatcroft, S. G., R. W. Davies, and J. M. Cooper. 1986. Soviet Industrialization Reconsidered: Some Preliminary Conclusions about Economic Development between 1926 and 1941. *Economic History Review* 39:2, pp. 264-294.
- Zaleski, Eugene. 1962. *Planning for Economic Growth in the Soviet Union, 1918-1932*. Chapel Hill, NC: University of North Carolina Press.