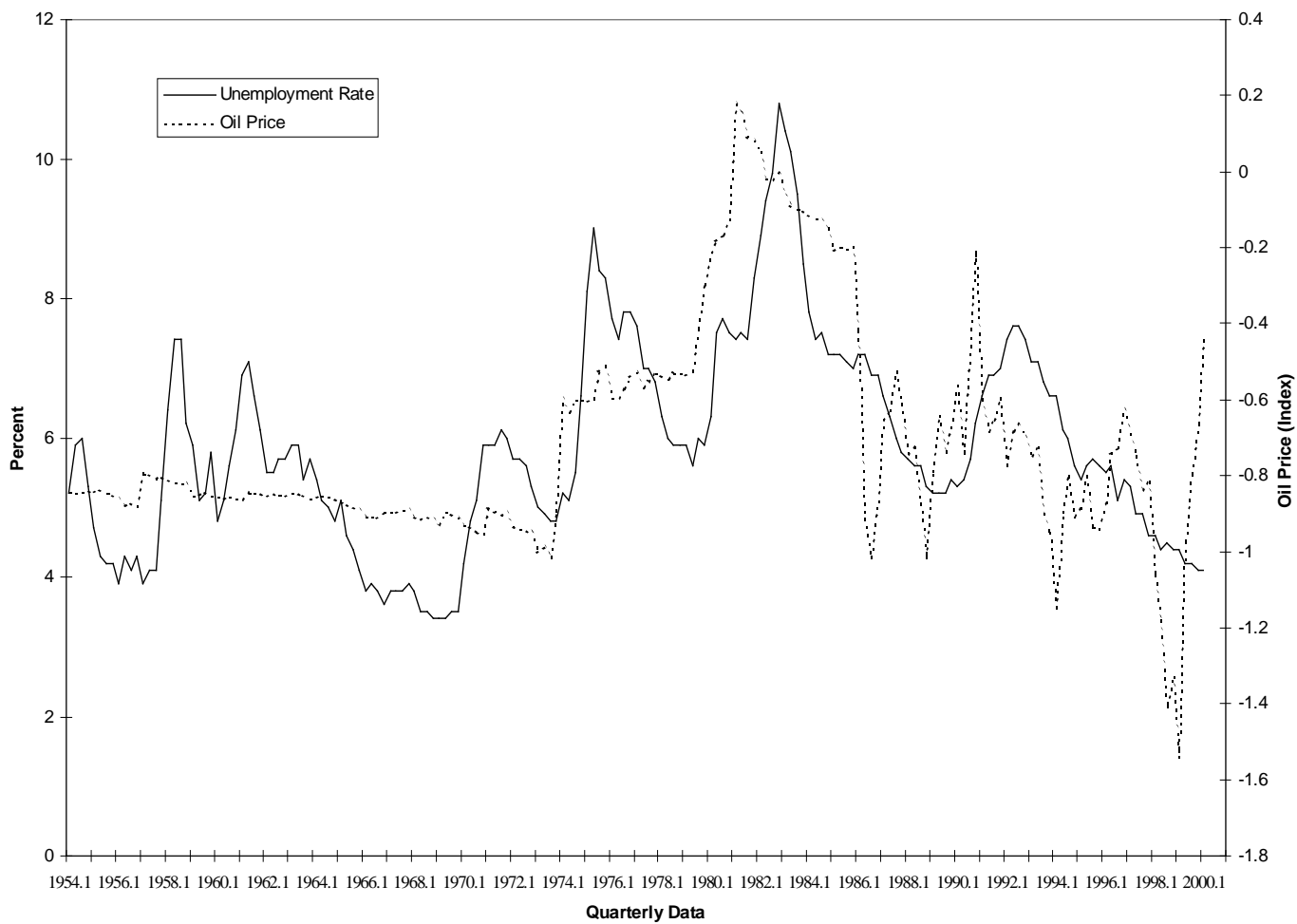


Updated Real Oil Price and US Unemployment Figure and Data, April 2000

Alan Carruth, Mark Hooker, and Andrew Oswald

U.S. Unemployment Rate and Log Real Oil Price



U.S. Unemployment Rate and Real Oil Price

Year.Quarter	Unemployment	roil	log roil
1954.1	5.2	0.43	-0.84397007
1954.2	5.9	0.429	-0.847231196
1954.3	6	0.43	-0.84397007
1954.4	5.3	0.432	-0.840487768
1955.1	4.7	0.43	-0.84397007
1955.2	4.3	0.433	-0.837017551
1955.3	4.2	0.429	-0.847231196
1955.4	4.2	0.427	-0.850737101
1956.1	3.9	0.423	-0.860856025
1956.2	4.3	0.416	-0.877550904
1956.3	4.1	0.418	-0.87275243
1956.4	4.3	0.414	-0.882614206
1957.1	3.9	0.452	-0.794958447
1957.2	4.1	0.452	-0.794958447
1957.3	4.1	0.446	-0.807660567
1957.4	5.1	0.447	-0.804525769
1958.1	6.4	0.444	-0.811030221
1958.2	7.4	0.442	-0.817350784
1958.3	7.4	0.44	-0.821207851
1958.4	6.2	0.44	-0.821207851
1959.1	5.9	0.426	-0.853550702
1959.2	5.1	0.428	-0.849333264
1959.3	5.2	0.43	-0.84304027
1959.4	5.8	0.425	-0.854725376
1960.1	4.8	0.424	-0.857786003
1960.2	5.1	0.423	-0.861092571
1960.3	5.6	0.424	-0.857786003
1960.4	6.1	0.423	-0.861092571
1961.1	6.9	0.421	-0.864172778
1961.2	7.1	0.429	-0.847231196
1961.3	6.6	0.429	-0.847231196
1961.4	6.1	0.429	-0.847231196
1962.1	5.5	0.426	-0.853550702
1962.2	5.5	0.429	-0.847231196
1962.3	5.7	0.427	-0.850502991
1962.4	5.7	0.426	-0.853550702
1963.1	5.9	0.429	-0.847231196

1963.2	5.9	0.429	-0.847231196
1963.3	5.4	0.427	-0.850502991
1963.4	5.7	0.423	-0.861092571
1964.1	5.4	0.424	-0.857786003
1964.2	5.1	0.425	-0.854725376
1964.3	5	0.424	-0.857786003
1964.4	4.8	0.423	-0.861092571
1965.1	5.1	0.42	-0.867262501
1965.2	4.6	0.417	-0.873710284
1965.3	4.4	0.414	-0.882855956
1965.4	4.1	0.411	-0.889162064
1966.1	3.8	0.404	-0.907330991
1966.2	3.9	0.404	-0.907330991
1966.3	3.8	0.402	-0.911800827
1966.4	3.6	0.408	-0.895508193
1967.1	3.8	0.407	-0.898450814
1967.2	3.8	0.408	-0.895508193
1967.3	3.8	0.41	-0.891110433
1967.4	3.9	0.41	-0.891110433
1968.1	3.8	0.403	-0.909066887
1968.2	3.5	0.401	-0.914791856
1968.3	3.5	0.404	-0.907578791
1968.4	3.4	0.4	-0.916290732
1969.1	3.4	0.394	-0.930643238
1969.2	3.4	0.409	-0.895263365
1969.3	3.5	0.406	-0.90090963
1969.4	3.5	0.402	-0.912049738
1970.1	4.2	0.395	-0.928616382
1970.2	4.8	0.394	-0.93140437
1970.3	5.1	0.388	-0.94803943
1970.4	5.9	0.385	-0.953473523
1971.1	5.9	0.414	-0.882372514
1971.2	5.9	0.409	-0.893062606
1971.3	6.1	0.405	-0.903374507
1971.4	6	0.407	-0.898205264
1972.1	5.7	0.393	-0.934200152
1972.2	5.7	0.39	-0.941864983
1972.3	5.6	0.389	-0.944175935
1972.4	5.3	0.387	-0.949072221
1973.1	5	0.368	-0.999944117
1973.2	4.9	0.373	-0.986176859

1973.3	4.8	0.362	-1.015834862
1973.4	4.8	0.409	-0.895018597
1974.1	5.2	0.55	-0.597837001
1974.2	5.1	0.531	-0.633181599
1974.3	5.5	0.549	-0.599292605
1974.4	6.6	0.549	-0.600021203
1975.1	8.1	0.546	-0.606052474
1975.2	9	0.551	-0.596201975
1975.3	8.4	0.592	-0.525093596
1975.4	8.3	0.598	-0.513662979
1976.1	7.7	0.551	-0.596201975
1976.2	7.4	0.551	-0.59602047
1976.3	7.8	0.565	-0.570752572
1976.4	7.8	0.582	-0.5407695
1977.1	7.6	0.589	-0.529329095
1977.2	7	0.568	-0.56651453
1977.3	7	0.574	-0.555474375
1977.4	6.8	0.587	-0.533412122
1978.1	6.3	0.585	-0.53580161
1978.2	6	0.58	-0.544899604
1978.3	5.9	0.587	-0.533412122
1978.4	5.9	0.587	-0.533241663
1979.1	5.9	0.586	-0.534264855
1979.2	5.6	0.591	-0.525939262
1979.3	6	0.661	-0.414304057
1979.4	5.9	0.743	-0.296655547
1980.1	6.3	0.808	-0.213440776
1980.2	7.5	0.834	-0.182121577
1980.3	7.7	0.845	-0.168655366
1980.4	7.5	0.879	-0.129197938
1981.1	7.4	1.196	0.178648151
1981.2	7.5	1.165	0.152549398
1981.3	7.4	1.098	0.093490343
1981.4	8.3	1.085	0.081579987
1982.1	8.9	1.052	0.050788167
1982.2	9.4	0.981	-0.019182819
1982.3	9.8	0.977	-0.023166278
1982.4	10.8	0.997	-0.003004509
1983.1	10.4	0.94	-0.061556306
1983.2	10.1	0.917	-0.086975014
1983.3	9.5	0.905	-0.100151882

1983.4	8.5	0.902	-0.1030299
1984.1	7.8	0.892	-0.113840816
1984.2	7.4	0.883	-0.124656605
1984.3	7.5	0.882	-0.126130277
1984.4	7.2	0.862	-0.148384006
1985.1	7.2	0.812	-0.208008664
1985.2	7.2	0.818	-0.200404064
1985.3	7.1	0.815	-0.204567166
1985.4	7	0.819	-0.199549102
1986.1	7.2	0.656	-0.421746941
1986.2	7.2	0.4	-0.916290732
1986.3	6.9	0.363	-1.014730805
1986.4	6.9	0.42	-0.867976872
1987.1	6.6	0.519	-0.656236827
1987.2	6.3	0.533	-0.629046255
1987.3	6	0.589	-0.530008443
1987.4	5.8	0.543	-0.610277703
1988.1	5.7	0.474	-0.746126105
1988.2	5.6	0.484	-0.72649716
1988.3	5.6	0.417	-0.875388741
1988.4	5.3	0.362	-1.016111067
1989.1	5.2	0.454	-0.789658081
1989.2	5.2	0.526	-0.643214812
1989.3	5.2	0.478	-0.738772359
1989.4	5.4	0.511	-0.671190013
1990.1	5.3	0.568	-0.56528181
1990.2	5.4	0.476	-0.743178114
1990.3	5.7	0.646	-0.437730069
1990.4	6.2	0.81	-0.210474148
1991.1	6.6	0.548	-0.601845022
1991.2	6.9	0.505	-0.683791086
1991.3	6.9	0.52	-0.654311157
1991.4	7	0.55	-0.598200703
1992.1	7.4	0.461	-0.773923491
1992.2	7.6	0.505	-0.68299885
1992.3	7.6	0.514	-0.665532014
1992.4	7.4	0.497	-0.699970406
1993.1	7.1	0.474	-0.746969987
1993.2	7.1	0.484	-0.726290399
1993.3	6.8	0.407	-0.899187824
1993.4	6.6	0.387	-0.950364712

1994.1	6.6	0.317	-1.149484619
1994.2	6.1	0.408	-0.896978421
1994.3	6	0.449	-0.801177925
1994.4	5.6	0.404	-0.906092907
1995.1	5.4	0.413	-0.884307686
1995.2	5.6	0.448	-0.802069588
1995.3	5.7	0.393	-0.935218742
1995.4	5.6	0.391	-0.939815277
1996.1	5.5	0.418	-0.871317366
1996.2	5.6	0.476	-0.741917345
1996.3	5.1	0.483	-0.727324632
1996.4	5.4	0.534	-0.6267978
1997.1	5.3	0.502	-0.689354382
1997.2	4.9	0.473	-0.749717532
1997.3	4.9	0.432	-0.840256046
1997.4	4.6	0.441	-0.818710404
1998.1	4.6	0.346	-1.062473242
1998.2	4.4	0.306	-1.183516796
1998.3	4.5	0.245	-1.407313728
1998.4	4.4	0.265	-1.329536027
1999.1	4.4	0.214	-1.540845121
1999.2	4.2	0.379	-0.971539206
1999.3	4.2	0.451	-0.796953349
1999.4	4.1	0.516	-0.662424008
2000.1	4.1	0.646	-0.437575162

*Unemployment is a standard series; roil is ppi for crude/ppi for all commodities.
Both are middle month of quarter.*