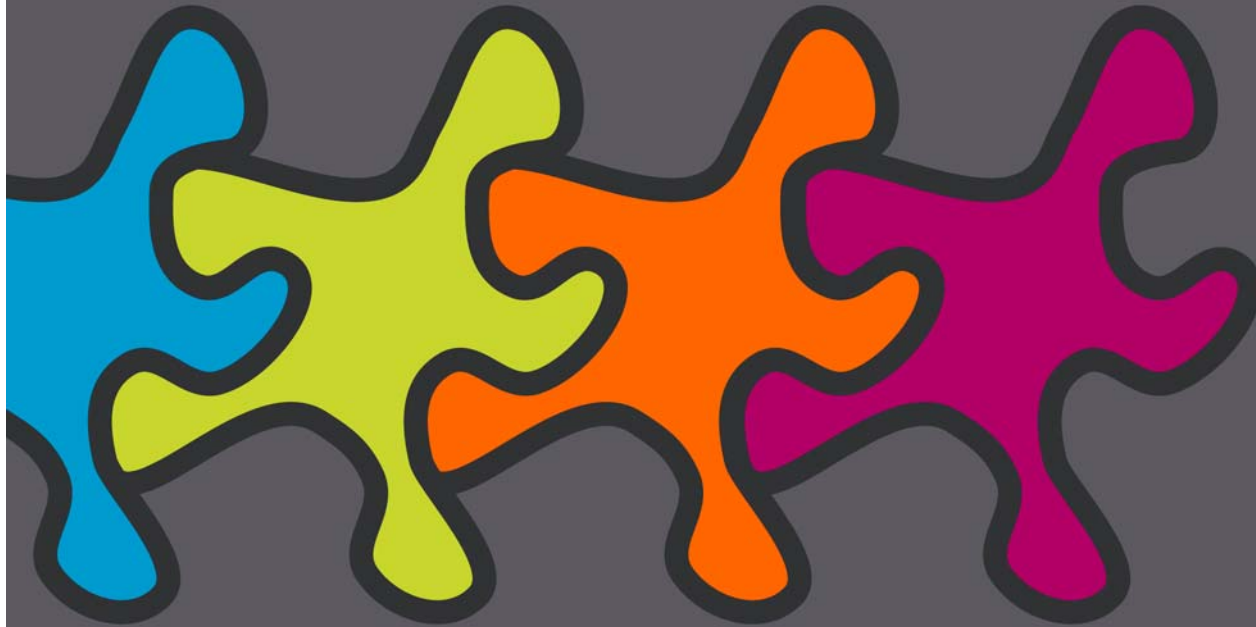


# i~work – some thoughts on structure



**John Clarkson**



## i~work – some thoughts on structure

### The goal

To enable inclusive access to work?





## i~work – some thoughts on structure

### The goal

To encourage extended years at work?





## Perspectives on structure

A user-led approach

A design-led approach

A solution-led approach

A question-led approach

A policy-led approach

A knowledge-led approach



## i~work – some thoughts on structure

**A solution-led approach**

A hierarchical set of solutions



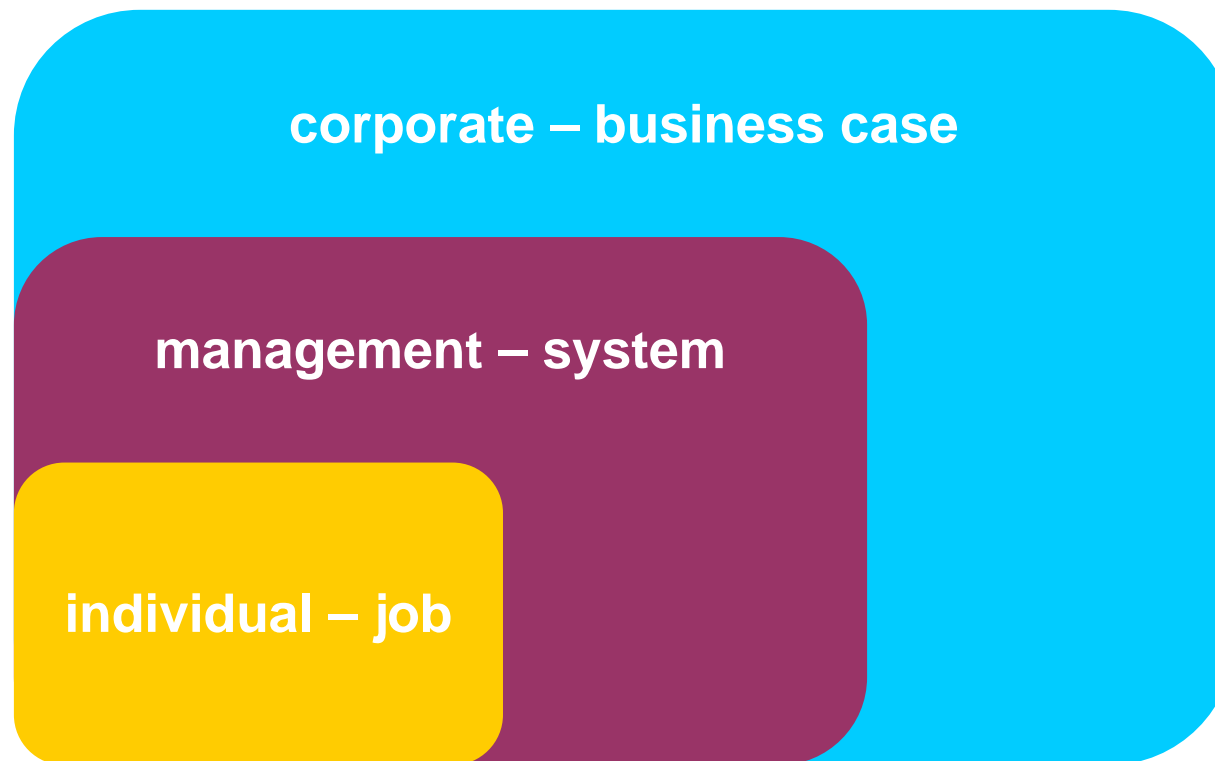
**A requirements-led approach**

A hierarchical set of challenges



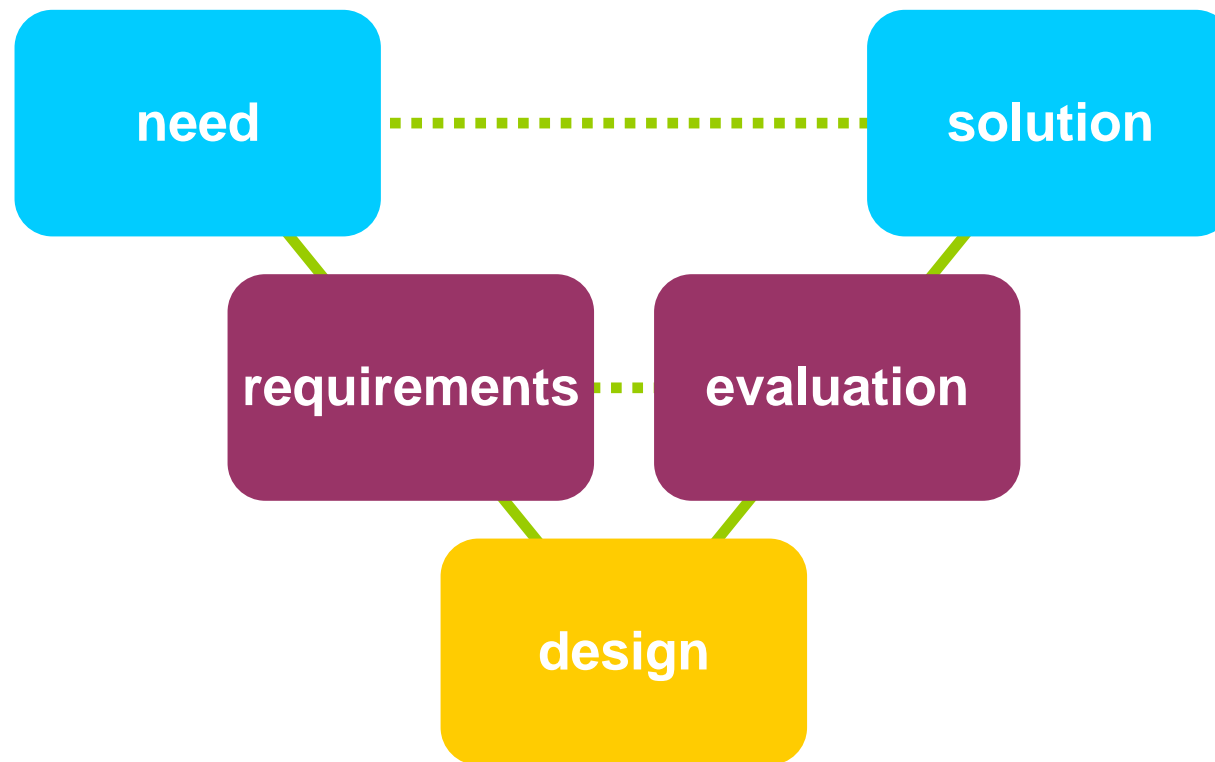
## A user-led approach

Different issues for different people



## A design-led approach

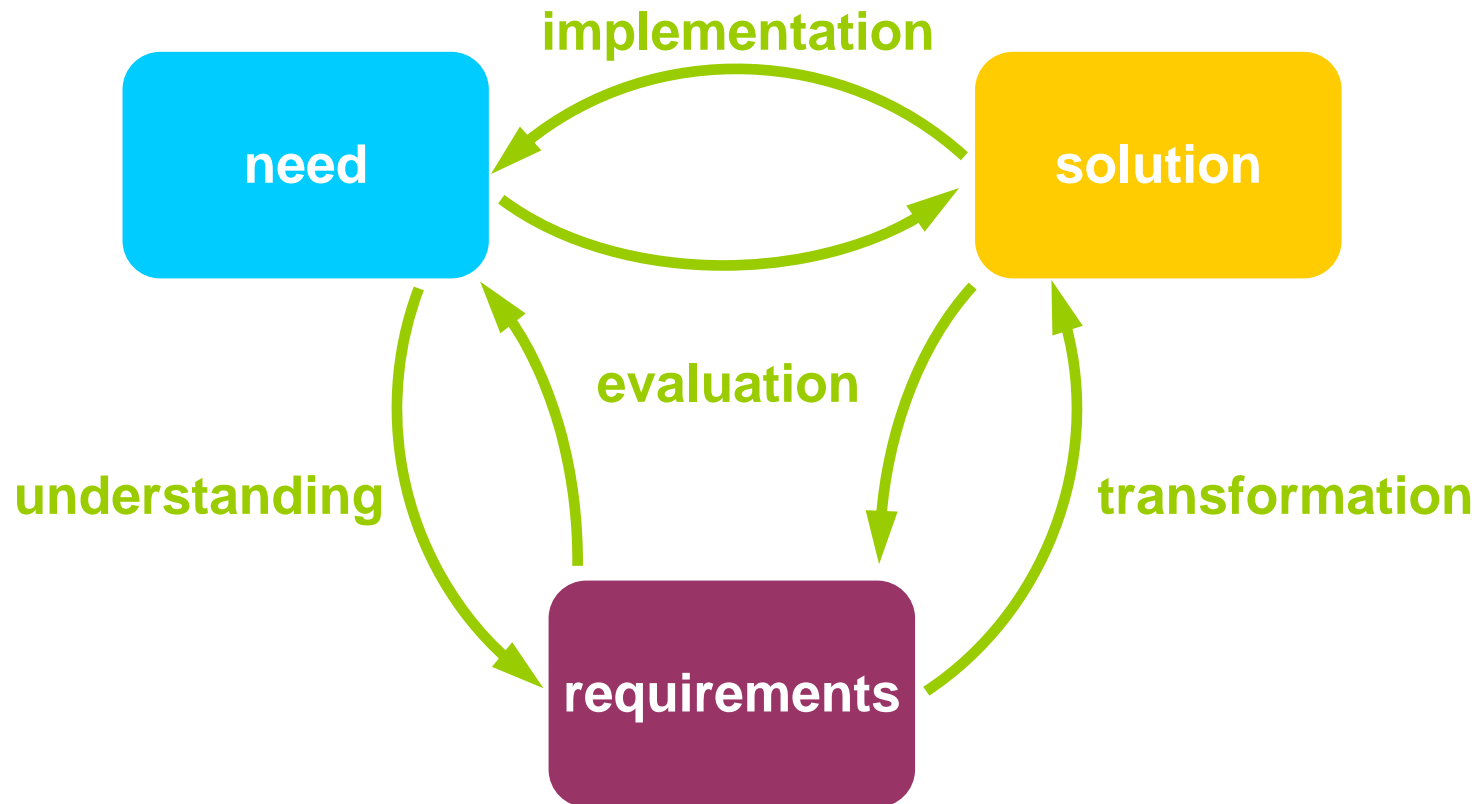
The V-model of design





## A design-led approach

The spiral-model of design

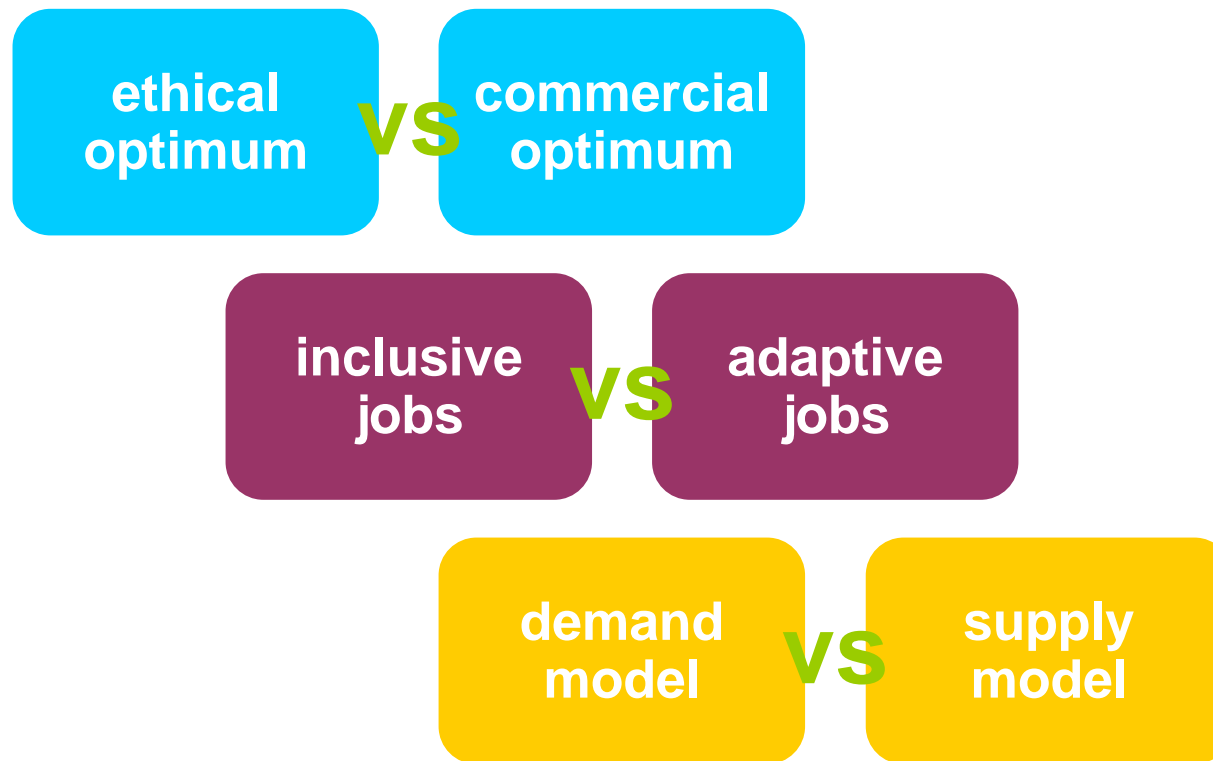




## i~work – some thoughts on structure

### A question-led approach

A range of strategic challenges





## i~work – some thoughts on structure

**A domain-led approach**

A range of characteristics

**job diversity**



**skill requirements**

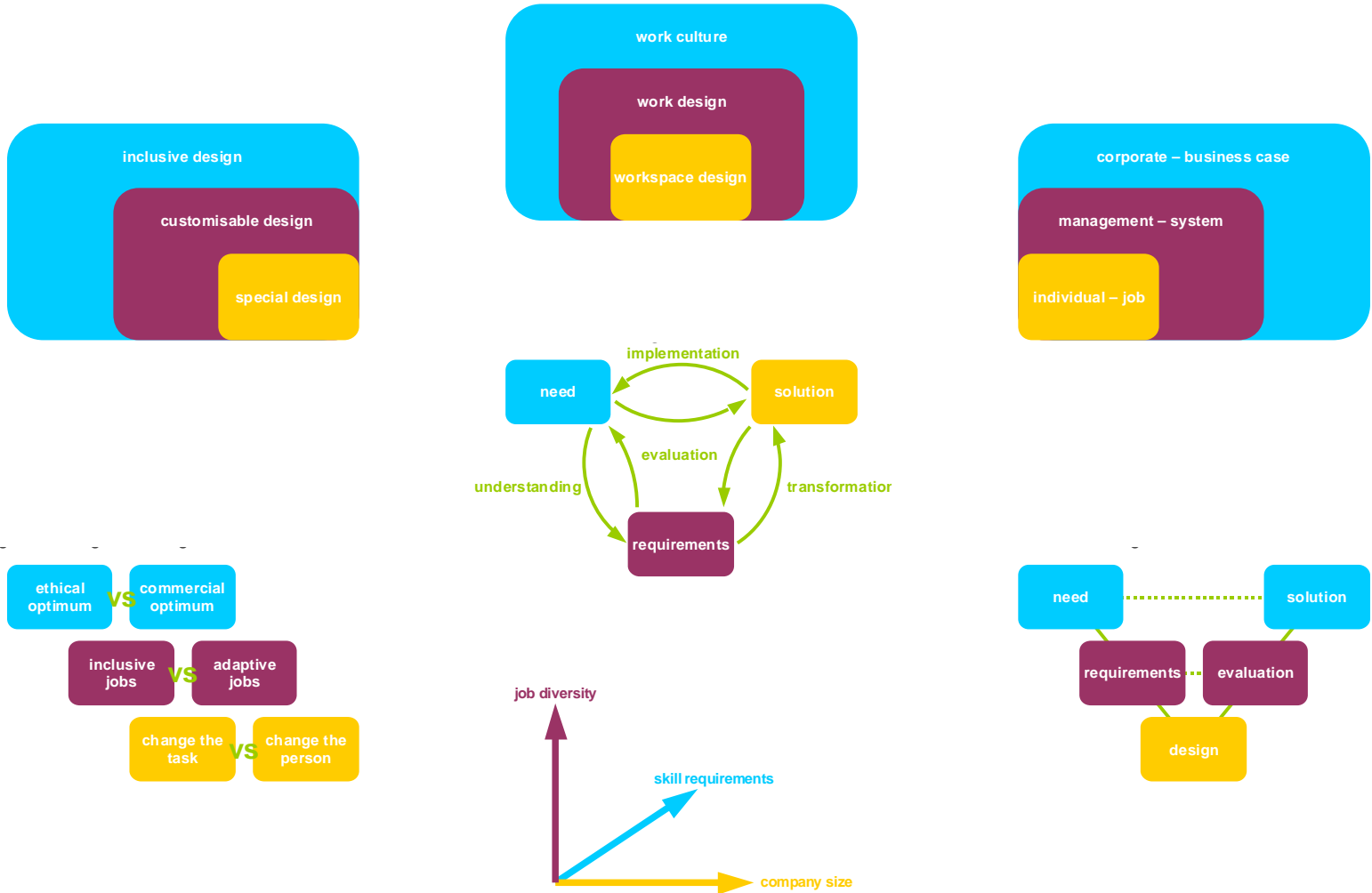


**company size**



# i~work – some thoughts on structure

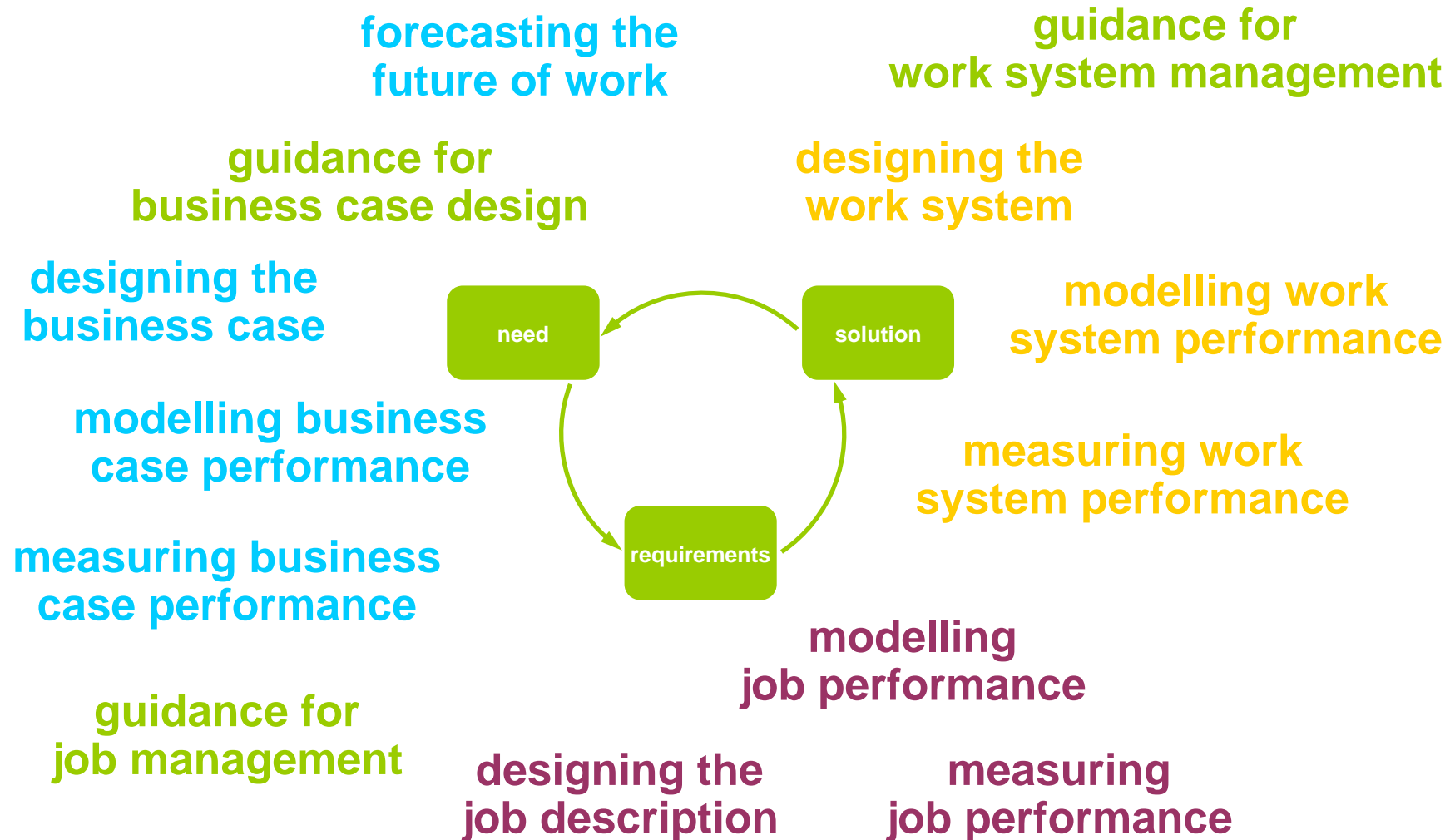
## A framework for integrated work design





# i~work – some thoughts on structure

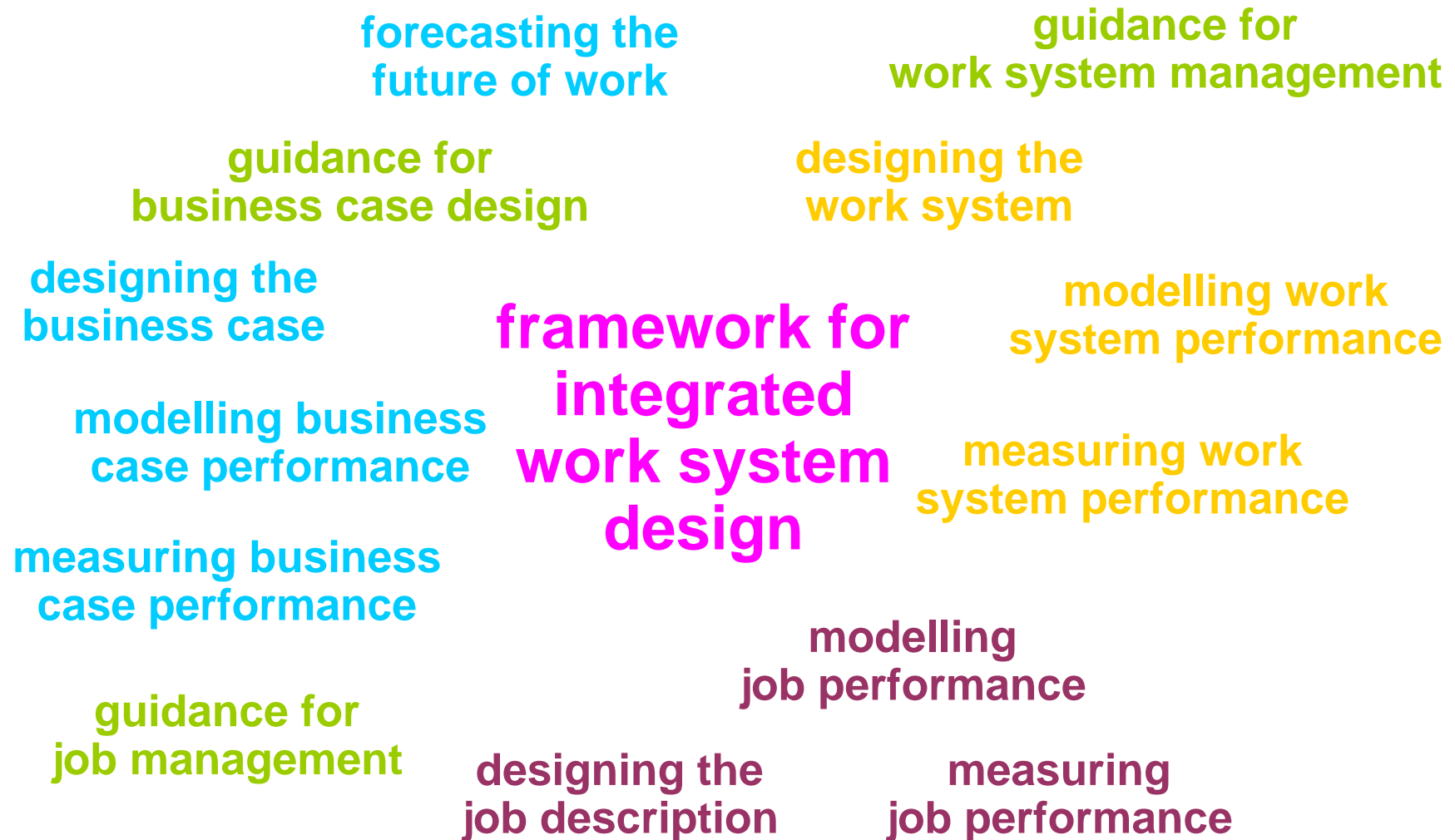
## A design-led approach





# i~work – some thoughts on structure

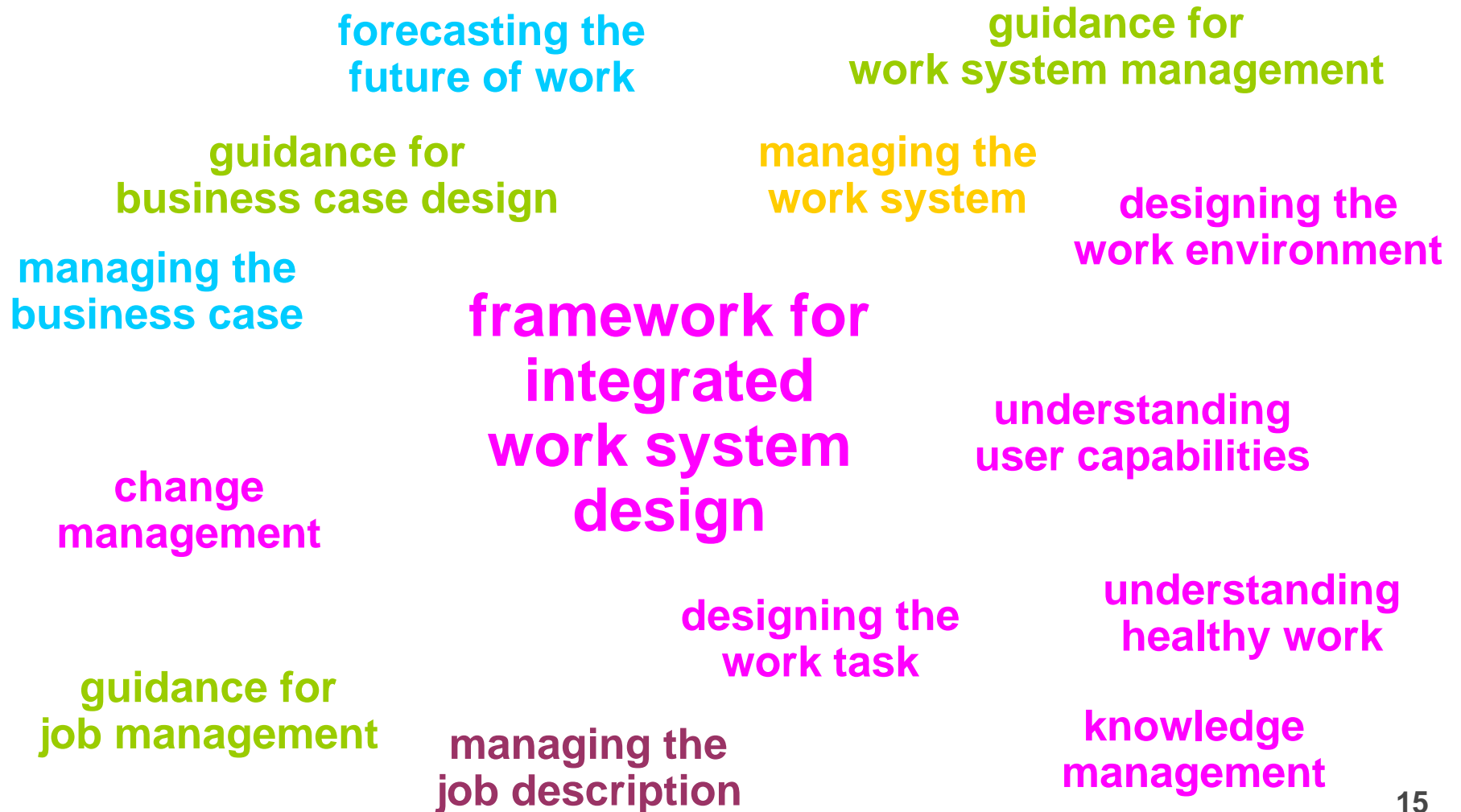
## A design-led approach





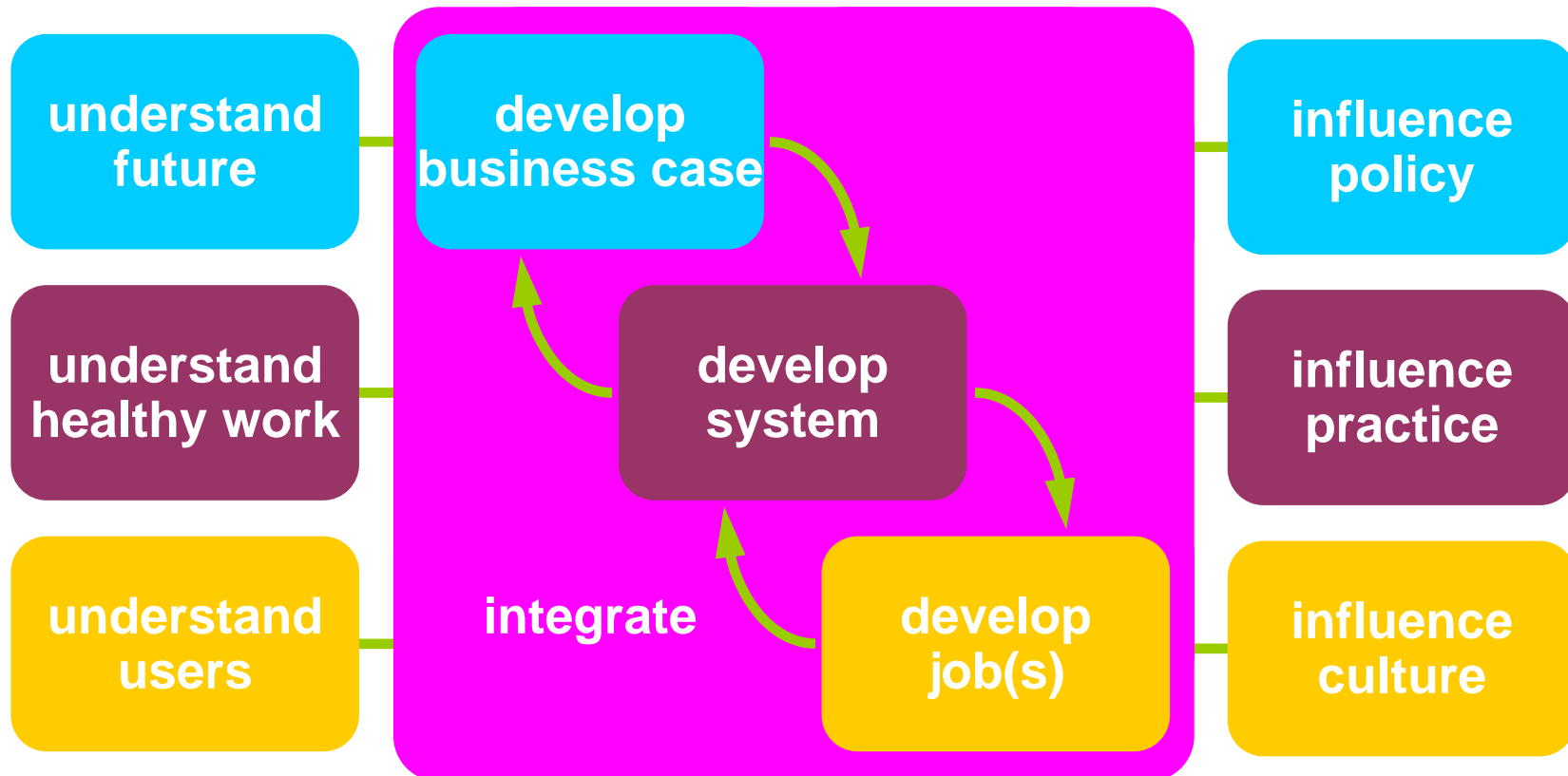
# i~work – some thoughts on structure

## A design-led approach



## A design-led approach

### Workpackage structure







## i~work – some thoughts on structure

### Workpackage participants

Understand future	<u>Warwick</u> , ILC
Understand healthy work	<u>Surrey</u> , Notts, HSL
Understand users	<u>Camb</u> , Surrey, RCA, Warwick
Develop business case	<u>Warwick</u> , Cambs, Surrey, RCA, Notts
Develop system	<u>Surrey</u> , Warwick, Cambs, RCA, Notts
Develop job(s)	<u>Warwick</u> , Cambs, Surrey, Notts
Integrate	<u>Cambs</u> , Surrey, Warwick, RCA, Notts
Socio-political context	<u>Warwick</u> , ILC
Influence policy	
Influence practice	
Influence culture	