

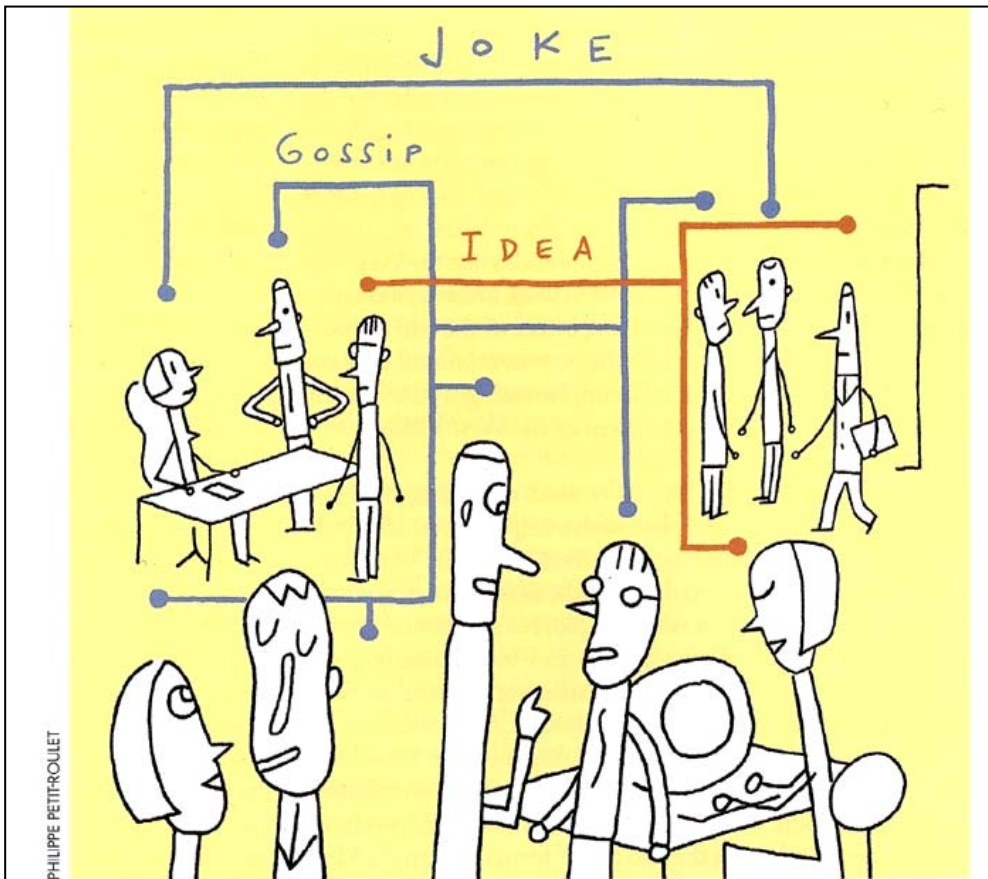
entation by Jeremy Myerson

ctor, Royal College of Art Helen Hamlyn Centre

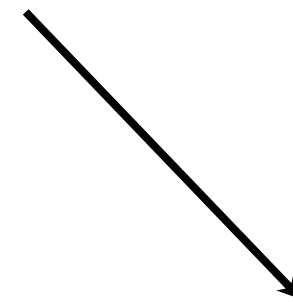
ch 2007



# Thinking office design to enable growing numbers of older people to participate in the 21st century knowledge economy



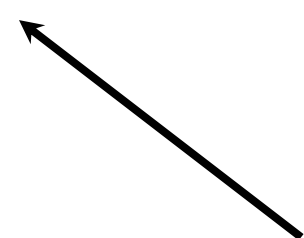
ergonomic needs of older workers in the knowledge economy?



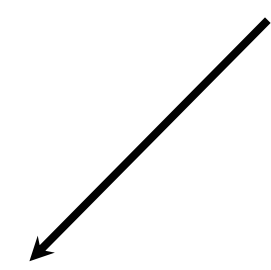
What are the  
underpinning design  
principles that arise  
from a critical reflection  
on the project?

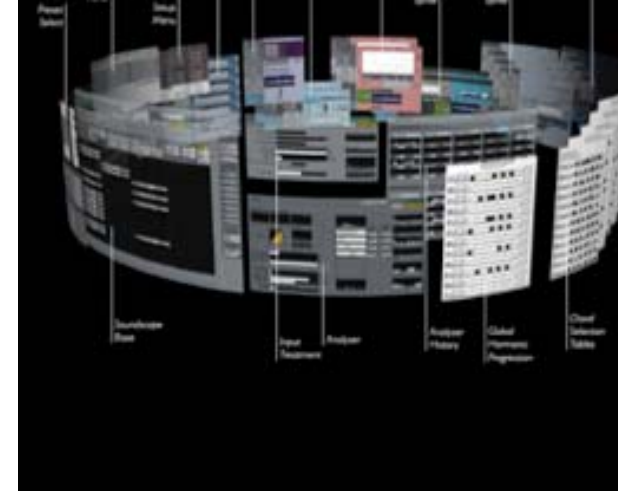
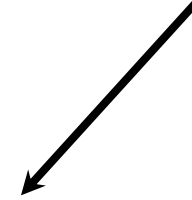
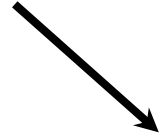
# Research Questions

How can these needs  
be addressed in the work  
environment?

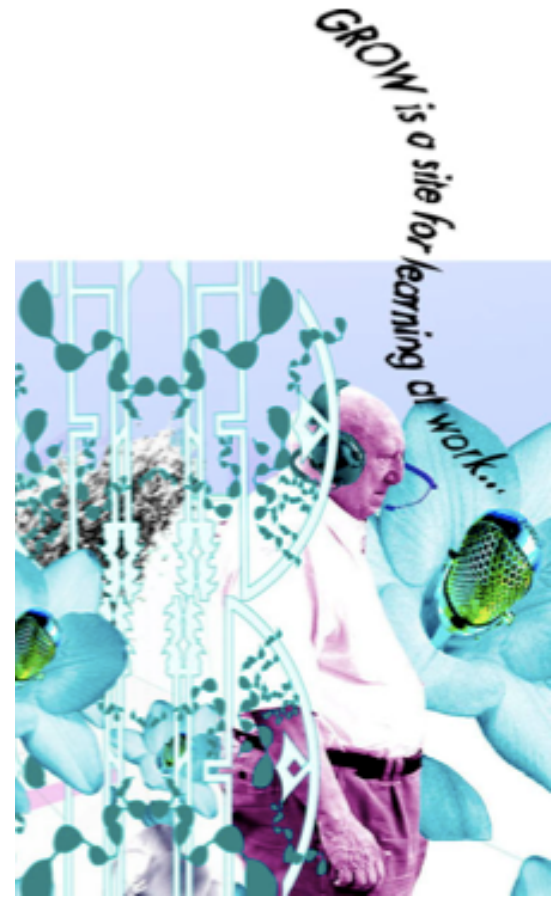
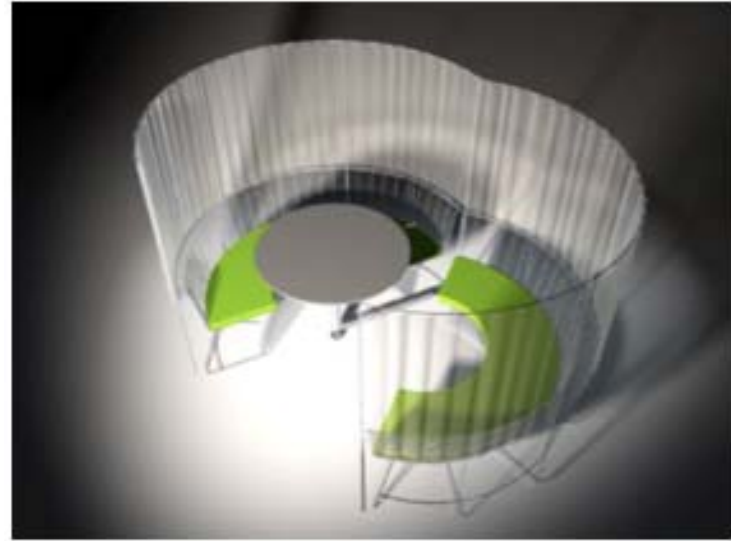
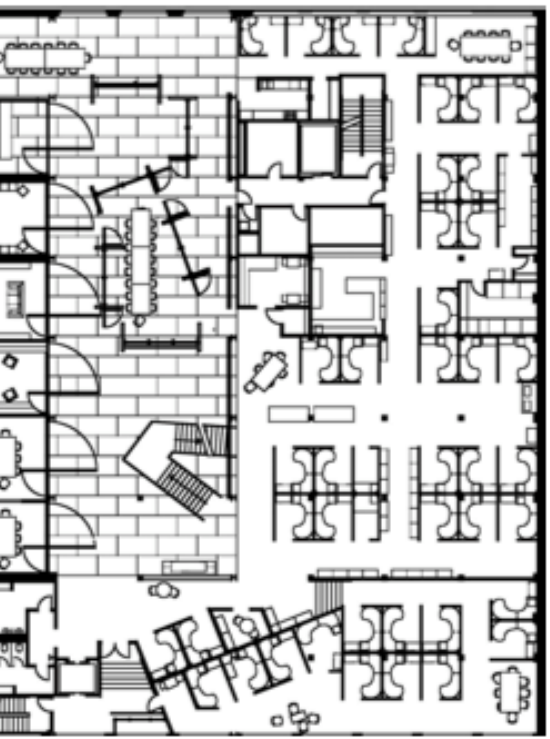
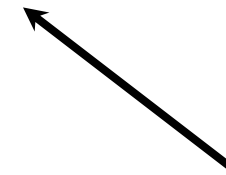


Which design & technology  
interventions have the most  
beneficial impact?





# Welcoming Workplace



Jeremy Myerson  
Research Director  
Principle Investigator

Jo-Anne Bichard  
Social Anthropologist  
Co-investigator

Alma Erlich  
Psychology

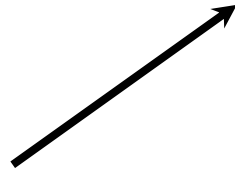


**Project Team**

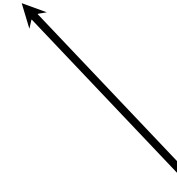


Dr. John Smith  
Architecture

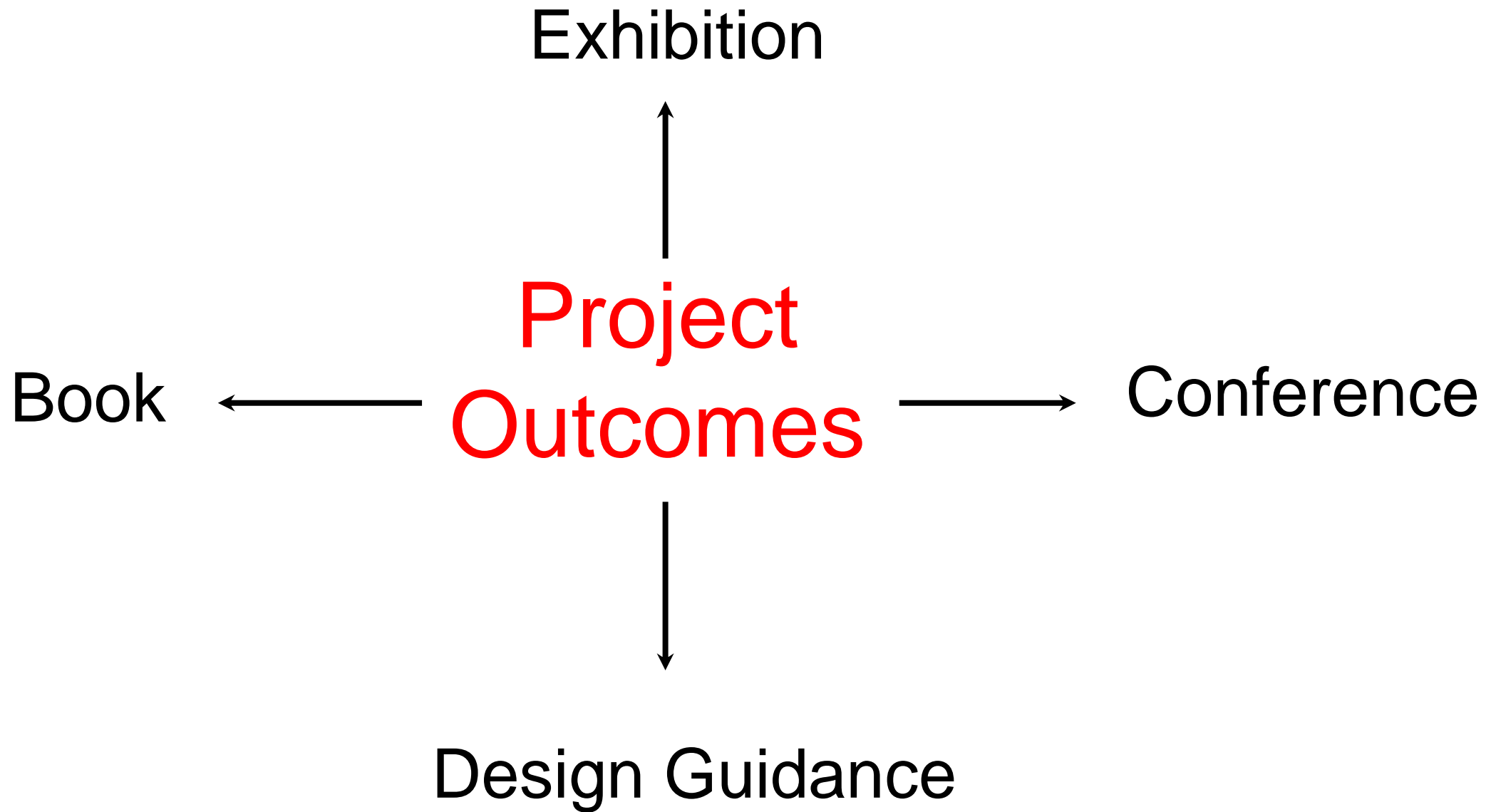
Joanna Ivison  
Management



Matthew Harrison  
Research Assistant



Margaret Durkan  
Communication



LINE

ature search, image bank, research design, site  
ction

ELOP

observation, design interventions, analysis

VER

rt forums, dissemination & documentation of outcome

Technology &  
Learning Futures

Architecture, Spaces  
& Access

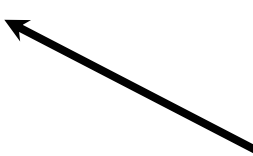
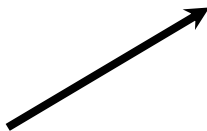
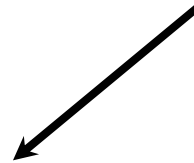
Furniture, Lighting, Acou  
& Ergonomics

Literature  
Search

Human Resources,  
Employment & Skills

Management Theor  
& Knowledge Work

Psychology of Ageing  
& Working





Concentration & Flow - **acoustic, lighting & furniture**

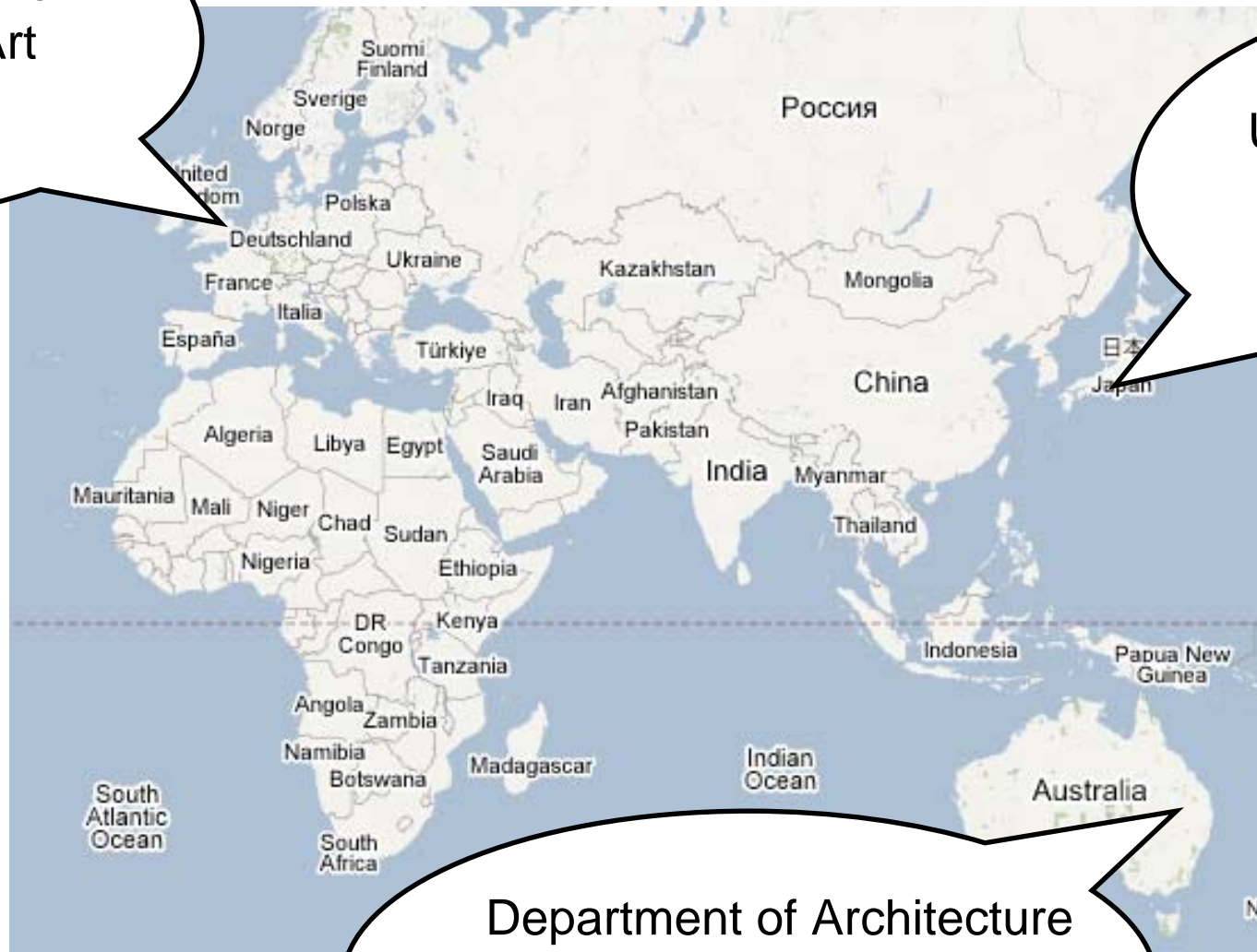
Work & Ageism - **expressing the value of experience**

Voluntary & Forced Retirement - **knowledge exchange & mentoring**

Collaboration vs. contemplation work - **public / private space strategies**



Helen Hamlyn Centre  
Royal College of Art  
United Kingdom



User Science Institute  
Kyushu University  
Japan

Department of Architecture  
University of Melbourne  
Australia

[www.welcomingworkplace.com](http://www.welcomingworkplace.com)



**helen  
hamlyn  
centre**