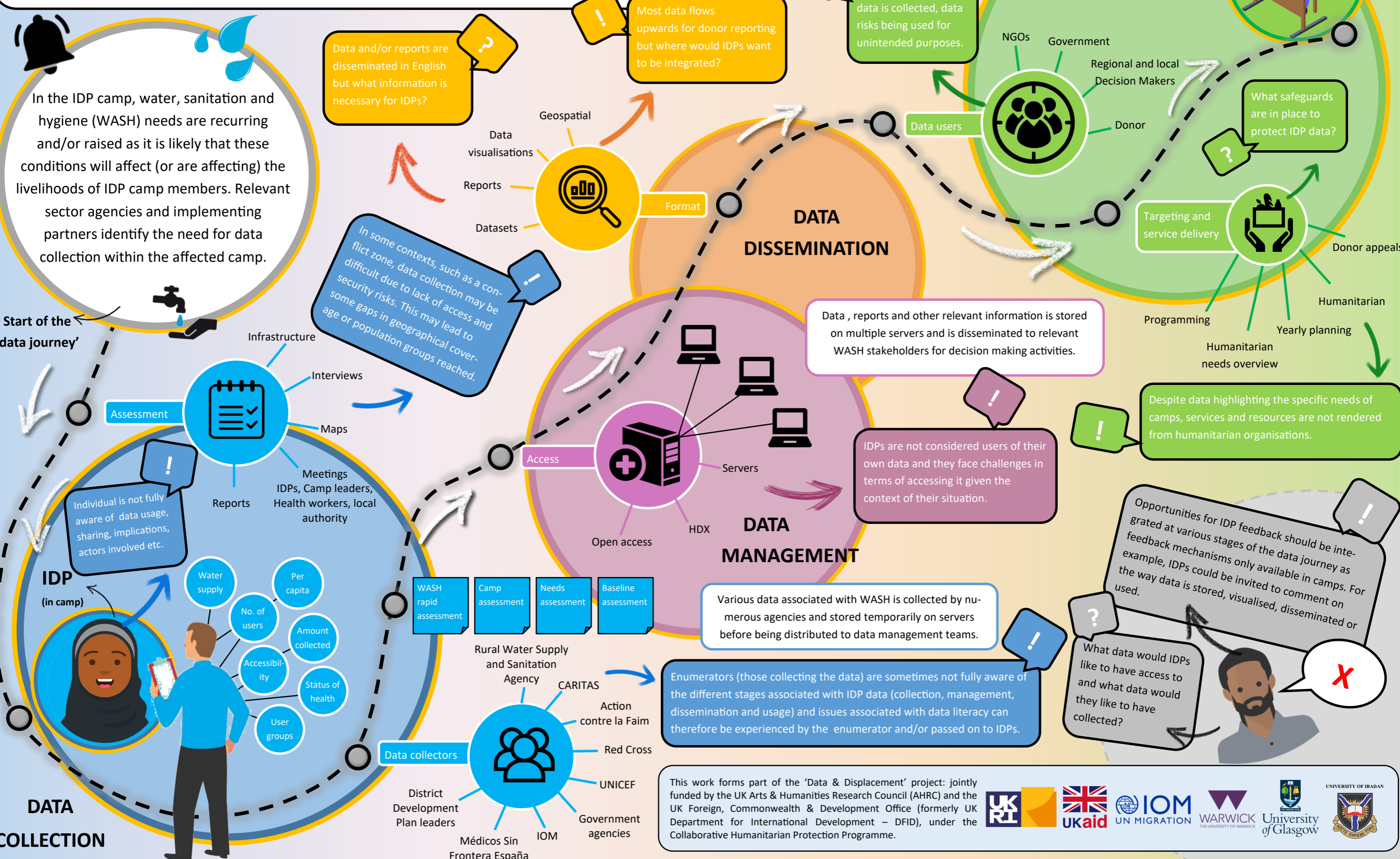


Data Journey: WASH

A data journey is often referred to as the key stages and activities undertaken to produce meaningful information from data. This diagram therefore represents the various stages associated with the 'journey' of IDP data, focusing specifically upon water, sanitation and hygiene, and includes the raising of camp needs and data collection, management, dissemination and usage activities/processes. Frictions or tensions experienced throughout the data journey are highlighted by '?' and '!'. Stakeholders analyse the data and utilise the information for evidence based decision making i.e. identification of needs, distribution of resources.



This work forms part of the 'Data & Displacement' project: jointly funded by the UK Arts & Humanities Research Council (AHRC) and the UK Foreign, Commonwealth & Development Office (formerly UK Department for International Development - DFID), under the Collaborative Humanitarian Protection Programme.

