



PHILOSOPHY

DO YOU WONDER?

UNDERGRADUATE STUDY

CONTENTS

- 03 Experience Philosophy at Warwick
- 04 How you'll learn
- 06 Your choice of degrees
- 12 Take an international perspective
- 14 Where can Philosophy take you?
- 16 Our students
- 18 The space and support you need
- 20 Student life in Warwick Philosophy
- 22 Get more from your Philosophy community
- 24 How to apply

48%

OF OUR PUBLICATIONS WERE JUDGED TO BE **WORLD-LEADING** IN THE REF 2021

"WONDER IS ONLY THE BEGINNING OF PHILOSOPHY."

SOCRATES IN PLATO'S *THEATETUS*



EXPERIENCING PHILOSOPHY AT WARWICK

Does the world make you wonder? Do you wonder why it's one way and not another? Do you wonder if the world could be changed for the better?

Satisfy your curiosity by studying Philosophy at Warwick.

We're an inclusive staff and student community in which you'll find it easy to share views, challenge perceptions and take intellectual risks.

Our department is driven by highly regarded research, which means you'll benefit from teaching informed by the most advanced understanding of the subject. We support diverse philosophical traditions, with strong interests in both analytic and continental philosophy. As a result, we offer a broad take on the discipline, allowing you to choose from a varied range of modules and tailor your learning to what interests you most.

Whichever topics you choose to study, you'll be challenged by a rigorous, but rewarding, learning experience. You'll benefit from a mix of traditional and innovative approaches to teaching, and be able to draw on extensive, dedicated support for your learning outside of the classroom. You'll also have opportunities to conduct your own research.

Our goal is to empower you to make a difference in the world by supporting you to become an independent, creative and effective thinker.

HOW YOU'LL LEARN

OUR TEACHING APPROACH

Through a variety of teaching methods, you'll encounter a wide range of areas and traditions of philosophy. Some of our modules will introduce you to the key works from the history of philosophy, while thematically organised modules will focus on contemporary treatments of philosophical problems. Recent modules have looked at philosophical issues about race, evil, terrorism and conspiracy theories, and making difficult decisions, for example.

Importantly, you will also begin to 'do philosophy'. You'll be exposed to good craftsmanship and get regular practice in reading, interpreting, debating about and arguing with texts, philosophers and theories. Lectures provide information, analysis and argument about particular philosophical positions, as well as time for questions and some discussion. Seminars are an opportunity to cement and further your learning through interactive group discussion, debates, and exchange of ideas and learning in a small group. Your seminar tutor will set the format and guide the discussion, making sure everyone gets a say and prompting healthy debate. You may take it in turns to begin the discussion with a presentation, be set some questions to consider beforehand or approach a specific task as a group.

HOW YOU'LL BE ASSESSED

Modules are assessed mainly through a mix of exams and essays, and you'll get extensive feedback to help you progress. Some modules involve other modes of assessment, including group work, video assignments or oral presentations. Regular feedback throughout the year will provide you with invaluable advice to ensure that you are equipped to succeed on your degree, whilst providing you with ideas about how to further develop your skills.

Lecturers and seminar teachers are available outside of class to give advice on your assignments, and on other matters related to their module. They will also give you feedback on your essays to help you improve both your writing and your philosophical engagement with topics.

At Warwick, you will be part of a supportive and enthusiastic community of philosophy students who often discuss philosophical ideas outside of class and offer study support and mentorship to fellow students. You will also get academic support from your lecturers and seminar leaders, who are experts in their field and therefore the best placed to introduce you to their area of philosophy.

OUR COURSES

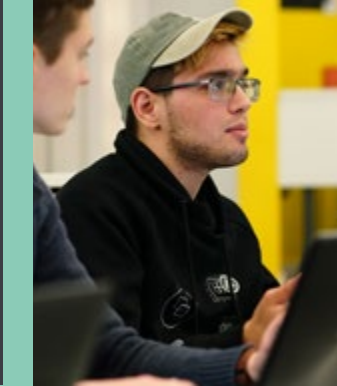
Flexibility and choice are key features of our philosophy courses. You'll have a lot of freedom to choose your own path through the subject and will have the opportunity to explore our strengths in both analytic philosophy and continental philosophy. You can also complete your degree with a dissertation on a topic of your own, developed and agreed in discussion with your supervisor.

In all of our courses, the first year aims to hone your ability to critically argue and complete well-structured analytical essays and other assignments on philosophical readings. We'll help you master the fundamentals block by block, from reading to understanding, outlining key concepts, detecting patterns of argument, and preparing for assessments. Our first year is designed in such a way that if you have not studied philosophy before you are not at a disadvantage.

From here, your degree will be defined by the course, pathway and modules you choose.

"If I could sum up the Philosophy course at Warwick in one word it would be...modern. I found that unlike some institutions that tend to focus only on the typical Plato and Aristotle type modules, Warwick gives you the opportunity to intertwine philosophy with your everyday life. One of my favourite modules was 'Philosophy through film' which involved investigating whether films could actually do philosophy. Although we didn't get to swap lectures for film screenings, we had fun movie nights, thoughtful debates and eventually created our own short films which is less daunting than it sounds. Our lecturers encourage us to genuinely investigate the aspects of philosophy that interests us so that we are constantly interested in what we study and keen to contribute our own ideas."

ORAY
BA PHILOSOPHY



YOUR CHOICE OF DEGREES



BA PHILOSOPHY

A level: AAA / IB: 36

Our single honours degree will enable you to wrestle with fundamental questions about the world and our understanding of it, and ethical questions regarding how we should live. You'll not only learn about philosophical topics, but you'll also develop the skills required to engage actively with those topics, in a vibrant and supportive academic community.

We emphasise the study of philosophy's core traditions (e.g. in the works of Plato, Aristotle, Descartes, Hume and Kant) as a background to understanding and critically interrogating more recent philosophical questions and concerns. In your second and third years, we give you even greater freedom to choose your own path through the subject, selecting from an exceptionally broad range of module topics; these currently include Hegel, Nietzsche, Sartre, Film, Aesthetics, Feminism, Time, Terrorism and Mind. Throughout your degree you will also have the opportunity to take modules from outside of the department, tailoring your degree to what interests you.

Our students benefit from expert guidance from staff in developing strong analytical and critical skills alongside the ability to integrate large bodies of information involving multiple perspectives.

FIRST YEAR

In your first year, you'll gain a solid grounding in philosophy and its history, and familiarity with an unusually broad range of philosophical questions. You'll also develop proficiency in the close reading of complex texts and the preparation of well-crafted assignments. Throughout your time with us, we'll support you in improving your philosophical abilities and your knowledge of the subject.

You'll take **six core modules** in your first year:

- Reason, Argument and Analysis
- Key Debates in Moral and Political Philosophy
- Mind and Reality
- Plato and Descartes
- Logic I: Introduction to Symbolic Logic
- Introduction to Ancient Philosophy

You'll combine these core modules with **one or two optional modules** within the department or from other departments if you wish.

SECOND AND THIRD YEAR

In your second and third years, we'll help you to deepen your philosophical knowledge and skills through a wide range of more specialised optional modules. Through engaging in depth with specific topics and thinkers, you'll learn how to closely read and analyse philosophical texts and other literature, and to think and write clearly. Our academics produce world-leading research in both analytic and continental philosophy, as well as in interdisciplinary work involving psychology, mathematics, and literature. Because we are involved in teaching at all levels, you are learning from individuals at the forefront of their fields from day one.

You'll take **one core double module** in your second year:

- History of Modern Philosophy

You'll then choose from a vast selection of optional modules.

In your **final year** there are **no core modules** so you'll have the flexibility to choose all your modules.

"My favourite modules in philosophy were Applied Ethics, Feminism and Crime & Punishment. I loved being able to apply traditional theories to real practices in the world today. I particularly enjoyed the seminars in these subjects because I felt really engaged and liked the informal debates that we had. The lecturers always had time for me and are all experts with a huge interest in their field. Finally, I always felt supported in the Philosophy department, from all members of staff and students- I couldn't have asked for better!"

NICOLE
BA PHILOSOPHY WITH PSYCHOLOGY

BA PHILOSOPHY WITH PSYCHOLOGY

Entry requirements: A level: AAB / IB: 34

What are minds and how do they work? What explains the objective character of thought, the fact that thoughts can be true or false? Can the subjective character of experience be explained scientifically? What makes other peoples' minds and actions intelligible to us? Addressing questions such as these requires drawing on insights about mechanisms from psychology as well as addressing conceptual challenges in philosophy.

If you have an interest in theoretical and philosophical aspects of psychology, or if you want to understand how actions are produced and what minds are for, our BA Philosophy with Psychology could be the degree for you.

Throughout this degree, you'll focus on minds and actions: the mechanisms and structures, biological, cognitive and social, which underpin them; their development and evolution; the reasons they vary between individuals and species; and their complex relations with culture.

We are unique in having many lecturers who are experts in philosophical psychology, and several lecturers whose published research includes both experimental psychology and philosophy.

Please note: Philosophy with Psychology is not BPA accredited as a route into clinical psychology.

FIRST YEAR

Your first year will cover foundational topics in philosophy and psychology and you'll be introduced to philosophical psychology. In the honours years, you'll be able to choose from a wide variety of modules on topics such as the origins of mind, the nature of thought and language, the philosophy of mind and action, social cognition, and joint action.

You'll take **five core modules** in your first year:

- Key Debates in Moral and Political Philosophy
- Mind and Reality
- Plato and Descartes
- Logic 1: Introduction to Symbolic Logic
- Brain & Behaviour

You'll combine these core modules with a choice of further modules from within Philosophy or Psychology.

SECOND YEAR

In your second year you'll take **three core modules**:

- History of Modern Philosophy
- Language and Cognition
- Developmental Psychology

You'll then choose from a vast selection of optional modules.

THIRD YEAR

In your **final year** there are **no core modules**. You'll choose optional modules from a range of modules from both departments. You also have the choice to take some of your optional modules from another department.

BA PHILOSOPHY AND LITERATURE

Entry requirements: A Level: AAB to include A in English Literature or English Language and Literature. IB: 34 to include 6 in Higher Level English Literature or English Language and Literature.

This is a degree for students interested in philosophy and literature and how they relate to each other. It gives you the opportunity to study the two subjects, each with distinctive traditions and lively contemporary scholarship, and to consider how these two fields matter to each other: are they in conflict, as Plato suggested? Do they complement, or even need one another? What can we learn about ourselves by having the goals, methods and problems of both fields in view and considering how they 'speak to' each other?

Some of the central themes and questions concern the way we express ourselves – what concrete form do we give to our thoughts and experience? We consider how the diverse human capacities for imagination, emotion, and reason can be relevant to truth-seeking.

And very broadly, we are interested in the goals and values that are at work in philosophy and literature: what are the projects and challenges that show up as worthwhile in these practices? We bring philosophy and literature together in the classroom. At key points in the degree you will be jointly taught by faculty from the Philosophy and the English and Comparative Literary Studies Departments. Though the particular thinkers and texts studied vary, these are some of the figures you might encounter: Friedrich Nietzsche, Virginia Woolf, Jean-Jacques Rousseau, Toni Morrison, Walter Benjamin, J. M. Coetzee, Emily Dickinson, William Wordsworth, Fernando Pessoa and Jorge Luis Borges. This degree encourages you to learn about these fields in depth and to develop your own understanding of what is important in the relationship between philosophy and literature.

FIRST YEAR

In your first year you'll study **three core modules**:

- Problems in Philosophy and Literature
- Modes of Reading
- Introduction to Philosophy

As there are only three core modules you can shape your course from year one, choosing up to three of your modules from six options.

SECOND AND THIRD YEAR

You'll take **one core double module** in your second year:

- History of Modern Philosophy

You'll then choose from a vast selection of optional modules across English and Philosophy.

In your final year there are no core modules so you'll have the flexibility to choose all of your modules (including those from other departments). As a Philosophy and Literature student you can also choose to take a dissertation or independent project co-supervised by staff in both departments.

4th
IN THE UK

The Times and Sunday Times Good University Guide, 2022.

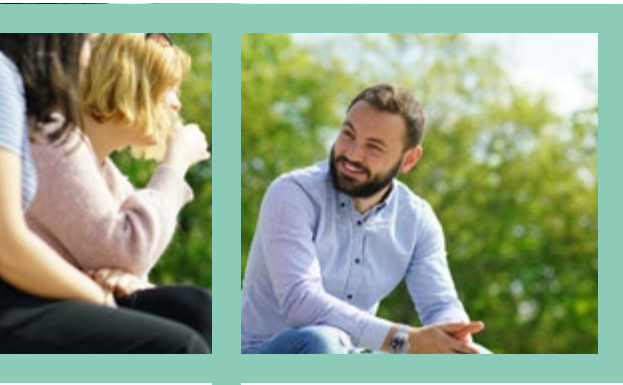
BSc MATHEMATICS AND PHILOSOPHY

Entry requirements: A level: A*A*A to include A*s in Mathematics and Further Mathematics.

IB: 39 to include 6,6,6 in three Higher Level subjects including Mathematics.

The BSc in Mathematics and Philosophy provides the opportunity to study both subjects in depth while also exploring how they are related through logic and philosophy of mathematics. In addition to Mind and Reality and Symbolic Logic during your first year, you'll also take core mathematics modules in probability, analysis, methods and modelling, and linear algebra which will prepare you for more advanced work in mathematics.

In your honours years you'll explore further topics in logic – such as Gödel's completeness and incompleteness theorems, set theory, modal operators, Turing machines, undecidable problems, computational complexity – as well as having the opportunity to consider related philosophical questions – e.g. how can we escape from the logical paradoxes? What is a mathematical proof? Are there true but unprovable statements? How is mathematics related to computation and to the empirical sciences? You'll also continue your work in maths by taking more advanced modules.



FIRST YEAR

In your first year you'll take **nine core modules:**

- Mind and Reality
- Logic I: Introduction to Symbolic Logic
- Refresher Mathematics
- Sets and Numbers
- Introduction to Probability
- Mathematical Analysis 1 & 2
- Mathematical Methods and Modelling 1 & 2
- Linear Algebra

SECOND AND THIRD YEAR

More than 50% of your modules in the second and third years are up to you and may be selected from a broad range of options, including honours level optional modules in Philosophy. Subject to meeting academic requirements, there is also an option to stay for a fourth year during which you'll undertake additional advanced study in logic or mathematics and work on an independent project or dissertation on a topic of your choice under the supervision of a faculty member in mathematics or philosophy.

In your second year you will take:

- Metric Spaces
- Multilinear Algebra
- Groups and Rings
- Mathematical Analysis 3 [core only for the 4 year degree]

In your third year you will take:

- Set Theory

BA PHILOSOPHY, LITERATURE AND CLASSICS

Entry requirements: A level: AAB, to include grade A in English Literature or English Language and Literature or in an A-level in Latin or Greek

IB: 34 to include 6 in Higher Level English Literature or English Language and Literature or Latin or Ancient Greek

This degree is for students eager to combine study of philosophy, literature, language and culture from the ancient to the modern world. The subjects of Philosophy, English Literature and Classics share a rich history, such that knowledge in one subject deepens and enlivens understanding in the others. Students on this degree can learn, for instance, about Plato as a thinker, writer and cultural influence; they can study myths from the ancient world that are still powerful today; they can study ethical ideas expressed in literature, theoretical argument and cultural practices from ancient Greece up to the current moment.

This degree is distinctive in giving students access to all three departments. You'll be able to take modules that link the subjects in various ways, and you'll also have great freedom to develop subject-specific interests - you could study not only ancient philosophy and epic poetry, but also archaeology, philosophy of mind and contemporary literary theory. The first year includes study of ancient Greek or Latin, and during your degree you will have the option to study modules that focus on texts that cross subject-boundaries and address questions about how the subjects relate.

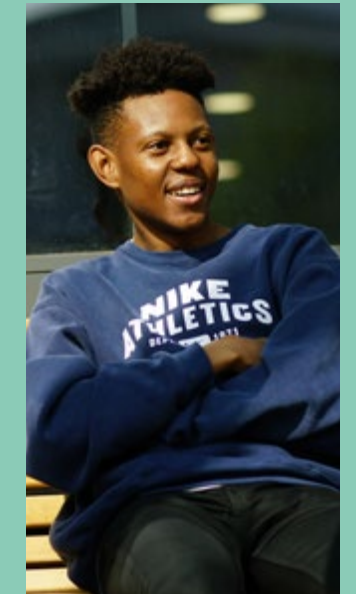
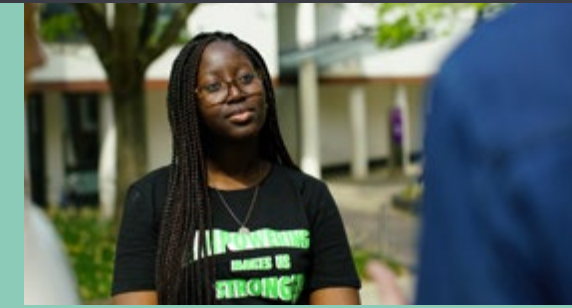
FIRST YEAR

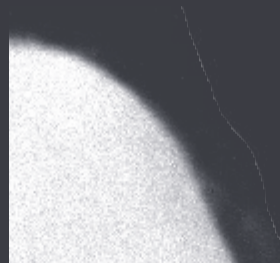
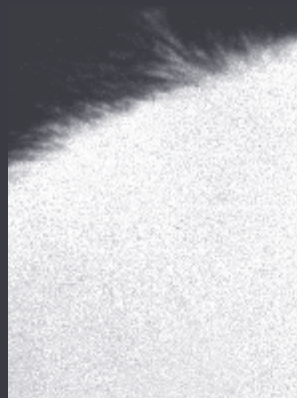
In your first year you will study:

- Problems in Philosophy and Literature
- Introduction to Philosophy
- Epic into Novel or Modes of Reading
- Options in Ancient Greek or Latin Language and/or Literature.

SECOND AND THIRD YEAR

You have one core module in your second year, History of Modern Philosophy, and will choose options from English, Classics, and a further option in any of the three subjects. In your final year you will have no core modules, with the freedom to choose your modules from each of the three departments. In either your second or third year you may also take an option in any of the Modern Languages, Arts or Social Sciences departments.





" BE LOVED,
BE ADMIRER,
BE NECESSARY;
BE SOMEBODY."

SIMONE DE BEAUVOIR

TAKE AN INTERNATIONAL PERSPECTIVE

You'll find great reward from studying abroad, whether you opt for an integrated or intercalated year. Our department is part of a global network of exchange partners, enabling you to spend time studying in another country during your time with us. We have long-standing agreements with prestigious universities in countries around the world.

INTEGRATED: STUDY ABROAD INCLUDED WITHIN YOUR THREE YEAR DEGREE

An integrated year allows you to replace year two of your programme with a year abroad. The marks you earn will count as the second year of your final degree results.

INTERCALATED: STUDY ABROAD ADDING A YEAR TO YOUR DEGREE

The intercalated option will add one year to your degree programme. Typically students apply in their second year of study to go abroad for a third year of study at a European institution. Students then return to Warwick for their final year. Warwick also has university-wide partnerships with universities all around the world. Each year the Philosophy department is allocated a number of places on these exchanges to which you can apply. Find out more at warwick.ac.uk/studyabroad

Below is an example list of places that were open to our students in previous years. The list is illustrative of what might be on offer in future years, as places and availability are always subject to change on an annual basis.

Integrated country options

Canada - Queen's University in Ontario; Western University in Ontario

USA - University of Wisconsin-Madison

Intercalated country options

Europe - Our department has partners in France, Spain, Italy, Germany, Netherlands, Austria, Denmark and more. You can choose from amongst the finest universities in Europe in cities such as: Madrid, Dijon, Rome, Koln, Vienna and Copenhagen.

Australia - Monash University (Melbourne campus).

Malaysia - Monash University (Selangor campus).

Japan - If you're interested in Japan, you can apply for options such as: University of Tokyo or Hokkaido University.

China - Tsinghua University.

WHERE CAN PHILOSOPHY TAKE YOU?

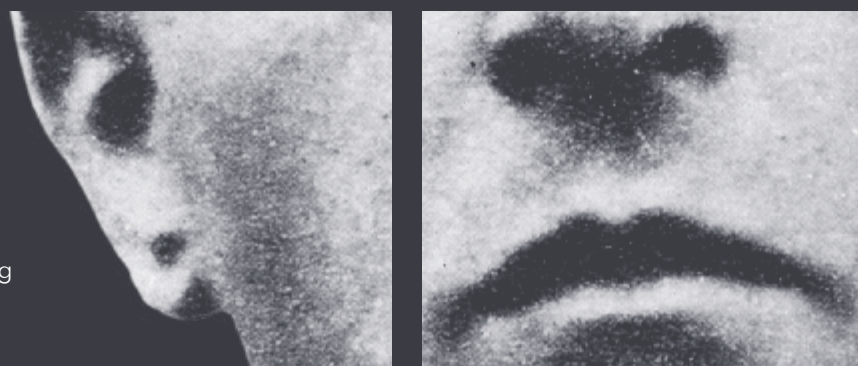
OUR GRADUATES

By studying Philosophy at Warwick, you'll develop a skillset to prepare you for careers that value fresh, creative, critical thinking. From the point of view of graduate recruiters, philosophy is well-known and well-regarded as a subject, so the range of opportunities is very wide. Recent graduates have progressed into research, consultancy, marketing, local government, human resources, construction management, the IT industry, public relations and the arts.

As one of our philosophy students, you'll have the opportunity to apply for a year-long work placement scheme at the end of your first or second year. Students are responsible for arranging placements themselves, but take a special module requiring them to write a report on their placement, and graduate with "with work placement" in their degree title. The scheme is a valuable way of gaining work experience during your degree.

Employers tell us that they like philosophy graduates because they can:

- Formulate complex problems and assess possible solutions
- Be rigorously logical
- Communicate clearly, both verbally and in writing
- Pay close attention to detail
- Influence ideas and decisions
- Consider social and ethical issues in a structured way



"HOW SMALL A THOUGHT IT TAKES TO FILL A WHOLE LIFE!"

LUDWIG WITTGENSTEIN

WHERE PHILOSOPHY TOOK SOME OF OUR GRADUATES...

"Following my degree, I worked as a learning support assistant with students with special educational needs and then as a teacher in an inner London school. Today I work as a Head of Humanities in Harris Academy Peckham, where I lead a team of teachers of RE, history, geography, psychology, sociology, media, law, citizenship and health and social care.

The job is fantastic. The children love learning philosophy. Due to them coming from a plethora of nationalities and faiths, debates can become lively and perceptive. Highlights of such work include seeing students go on to university and a yearly trip that I manage, where Peckham children work in a French monastery for a week, with an Ecumenical community of young people from around the world."

JOE
HEAD OF HUMANITIES, HARRIS ACADEMY, PECKHAM
BA PHILOSOPHY

I studied Philosophy with a work placement, and was the first person on this exciting degree programme! Upon my graduation in 2020 I received the Highest Award conferred by the University of Warwick, the Outstanding Student Contribution Award (OSCA) 2020, in recognition of my efforts to enhance employability for social science students.

I did my work placement at Microsoft where I was a Partner Development Manager intern in a new division of Microsoft UK, named One Commercial Partner (OCP). In essence, my division worked with partner organisations which sold on behalf of Microsoft to end customers. My day to day role involved client research, building reports, business planning, event management and managing client accounts.

My philosophy degree equipped me with various skills that helped me to succeed in my role, including problem-solving, research, and presentation skills. Philosophy students thrive on problem-solving, and the essay writing skills I developed during my degree improved my ability to research and present complex information in an effective, simple and succinct way to my team and clients. After my Microsoft internship I went on to intern at Google, and I now have a graduate job at Visa Inc as a Fintech Analyst!

VERA
BA PHILOSOPHY WITH WORK PLACEMENT

OUR STUDENTS

"Whether you're into applying philosophy in a wider educational setting or grappling with Kant's 'Critique of Pure Reason' there are a wide range of modules you can choose. One thing which really stands out to me is the fact that research talks are constantly being advertised in the department, whether this is from professors or our very own postgraduates.

Everyone in the department is super friendly. The department provides advice on how to write essays and they put your academic success on the top of their priority list. I really feel that the advice given on how to write essays is useful for all students, with staff even offering to go through all the essays I wrote during the first and second year. Academic support in the department is coupled with the opportunity to attend end of term parties in addition to the Philosophy Society's events."

SARA
BA PHILOSOPHY WITH PSYCHOLOGY

"I knew that I had an interest in alternative ways of thinking, but I was unsure whether that would be enough to get me through three years of studying Philosophy at a top university. However, all of that uncertainty quickly turned into a motivated excitement when I arrived here and started to see the truly transformative potential of this degree. Each module I took, from first year right through to third year, provided me with some teaching, rule, or wisdom that had a real-life application. Whether I was applying Stoic thinking to the problem of climate change, discussing Simone de Beauvoir's views on love with my partner, or making sure my arguments with friends were logically sound, my studies always played a crucial role in my daily experiences. As I continue my studies, begin my career, and engage with new people, I am certain that the philosophical toolkit I have developed here will serve me well."

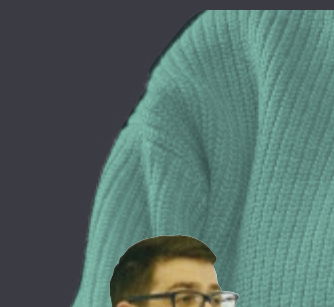
ADAM
BA PHILOSOPHY

"Some of my non-philosophy friends say I "don't seem like a philosophy student". I think that there is the "myth" that philosophers mainly exist in solitude, reading, and thinking, detached from life. While my degree includes that, I am naturally very sociable; you will see me around campus all the time. I do many things beyond my course - I love going to the theatre, dancing to live music in Leamington pubs, singing and playing guitar, and cooking with friends. By being yourself you will build meaningful friendships, but only by keeping an open mind."

XITA
BA PHILOSOPHY AND LITERATURE

"The philosophy department at Warwick is slightly smaller than some of the other departments which I love because it has such a close-knit feel. Everyone knows each other's names and you get to have some fantastic discussions while you wait for lectures. The department is also truly unique in that they strive to be innovative, many of the modules here you won't find anywhere else which I love. They endeavour to include modern content so you will be studying events happening in the world right now which I find really exciting. I believe you will not find a more passionate group of philosophers anywhere else."

AMELIA
BA PHILOSOPHY



THE SPACE AND SUPPORT YOU NEED

YOUR PERSONAL TUTOR

You will have a personal tutor who will be a first point of contact for you, offering you guidance and support for your general academic questions and any academic or personal difficulties you might have. They will support your academic development throughout the duration of your programme, and you will meet regularly, discussing, for example, how you are progressing and what you might choose as your optional modules. This means they have a complete picture of your strengths, experiences and skills, and will provide references for you during and beyond your time as a student.

MODULE DIRECTORS

Your module tutors are in charge of your module content, set seminar topic areas, and deliver the main lectures of your module. They can provide specific advice about the subject matter of individual modules along with advice about particular essays and assignments.

THE DIRECTOR OF STUDENT EXPERIENCE AND PROGRESSION (DSEP)

The DSEP can offer advice on study skills, including how to do well (or even better) in essay writing, assignments or exams, which modules might suit you best, or guidance on internships, careers, and postgraduate study.

YOUR ACADEMIC LIBRARIAN AND LIBRARY HELPDESK

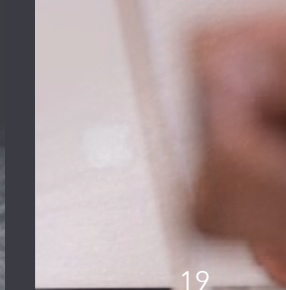
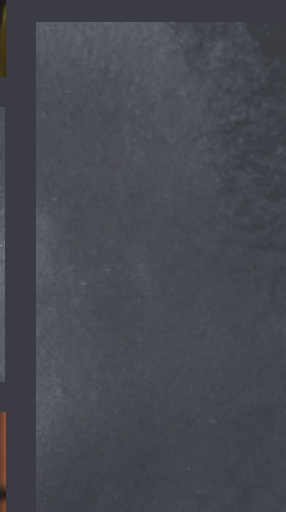
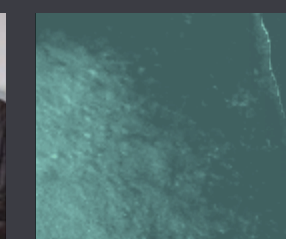
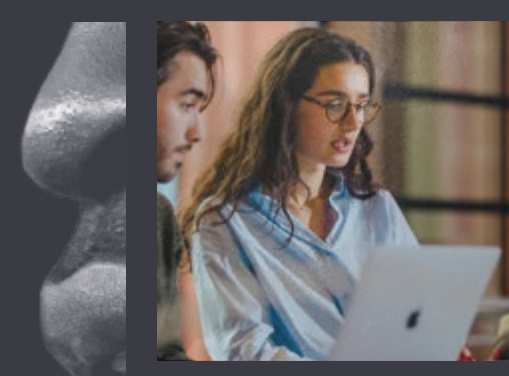
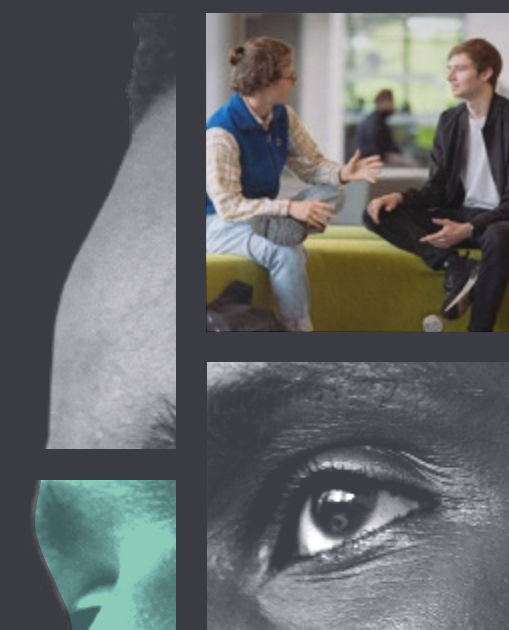
Your Academic Support Librarian will help you to develop information and research skills during your studies and they can offer you training in literature searching, finding and using information, referencing and avoiding plagiarism, and reference management tools. They can help you develop skills to find what you're looking for quickly, and they can give you techniques for delving into the vast array of resources available to you.

SKILLS SESSIONS AND PROGRAMMES

Study skills will be built into your core modules in the first year. In those modules, you will develop skills in close reading, essay writing, exam technique, critical thinking and presentation. We also offer specific sessions for second and third years, directed at honours level assessed work. Warwick also offers the Undergraduate Skills Programme and Academic Writing Programme to help you further develop academic and career-related skills.

STUDENT MENTORS

When you arrive, you will be given a mentor, a current student on your programme who can tell you about their experiences of life and studies at Warwick. These student volunteers can also help guide and support you, give advice and answer questions. We've found that new students appreciate the availability of those who are willing to share their experiences with them in this way.



STUDENT LIFE IN WARWICK PHILOSOPHY

We are based right in the heart of campus, next to the library, Arts Centre and near to the main lecture theatres. Our student common room acts as a hub for fellow students to gather between lectures.

With such a friendly, active department, you'll find plenty of things philosophy related to keep you busy, engaged and sociable. You'll get the chance to make friends with fellow students, exchange experiences, get advice, and hear interesting perspectives from various speakers and conferences.

OUR SOCIETIES

The **Philosophy** and the **Philosophy and Literature** societies are both open to students with a passion for philosophy. The two societies are closely linked and offer peer-support for students, as well as a range of regular socials and speakers throughout the year.

"The Philosophy Society is a space built by students for students interested in philosophy to come together, socialise, and meet new people. Joining the society gives you access to prestigious speakers, a mentoring programme, debates, a philosophy essay bank, and our student led magazine, all designed to help you flourish academically. This year we have focussed on making the society more sociable and at times held socials multiple times a week - allowing us to gain members from a range of academic backgrounds. It has been an amazing year for the society, we have had a blast and we look forward to welcoming you into the community!"

SHAAN

PRESIDENT OF WARWICK
PHILOSOPHY SOCIETY



"When I first came to Warwick I was impressed by how modern the campus was, and I liked the convenience of all the facilities being within walking distance: university buildings, the library, accommodation halls, bars and cafes, the arts centre and supermarkets.

With all the essential information about the course given, it was easy to get into the new student routine. The workload during the first term wasn't too huge and I didn't find it hard to keep up the pace, even though I am an international student and I needed to adapt to the English language as well as studying at university level. As a fresher, I had a student mentor assigned to me who was there to help me with queries that arose during the first term, and the whole year.

It was quite easy to make friends with those I was living with and also with people doing different philosophy degrees. I met many of them in the philosophy common room where students come to share their ideas, study, or enjoy a cup of coffee/tea. There are also different societies to join, including the Philosophy Society that organises social events, which is a good opportunity to find people that you have something in common with."

RUGILE

BA PHILOSOPHY WITH PSYCHOLOGY

GET MORE FROM YOUR PHILOSOPHY COMMUNITY

Whether you're an undergraduate, postgraduate or member of staff, you'll be welcomed at our department seminars and other research activities which take place throughout the year. As well as providing opportunities for you to socialise and collaborate, these events will give you the chance to develop valuable skills and networks.

We host a range of fantastic philosophical speakers from across the UK at these seminars and events. Examples of some of the exciting activities that have gone on here in the last year include:

Minorities and Philosophy (MAP) events - MAP is a worldwide network that aims to facilitate the participation of underrepresented groups in Philosophy. MAP at Warwick hosts a variety of events including student and staff workshops, coffee mornings and external speakers.

MindGrad - This is the world's leading conference for postgraduate students in the philosophy of mind.

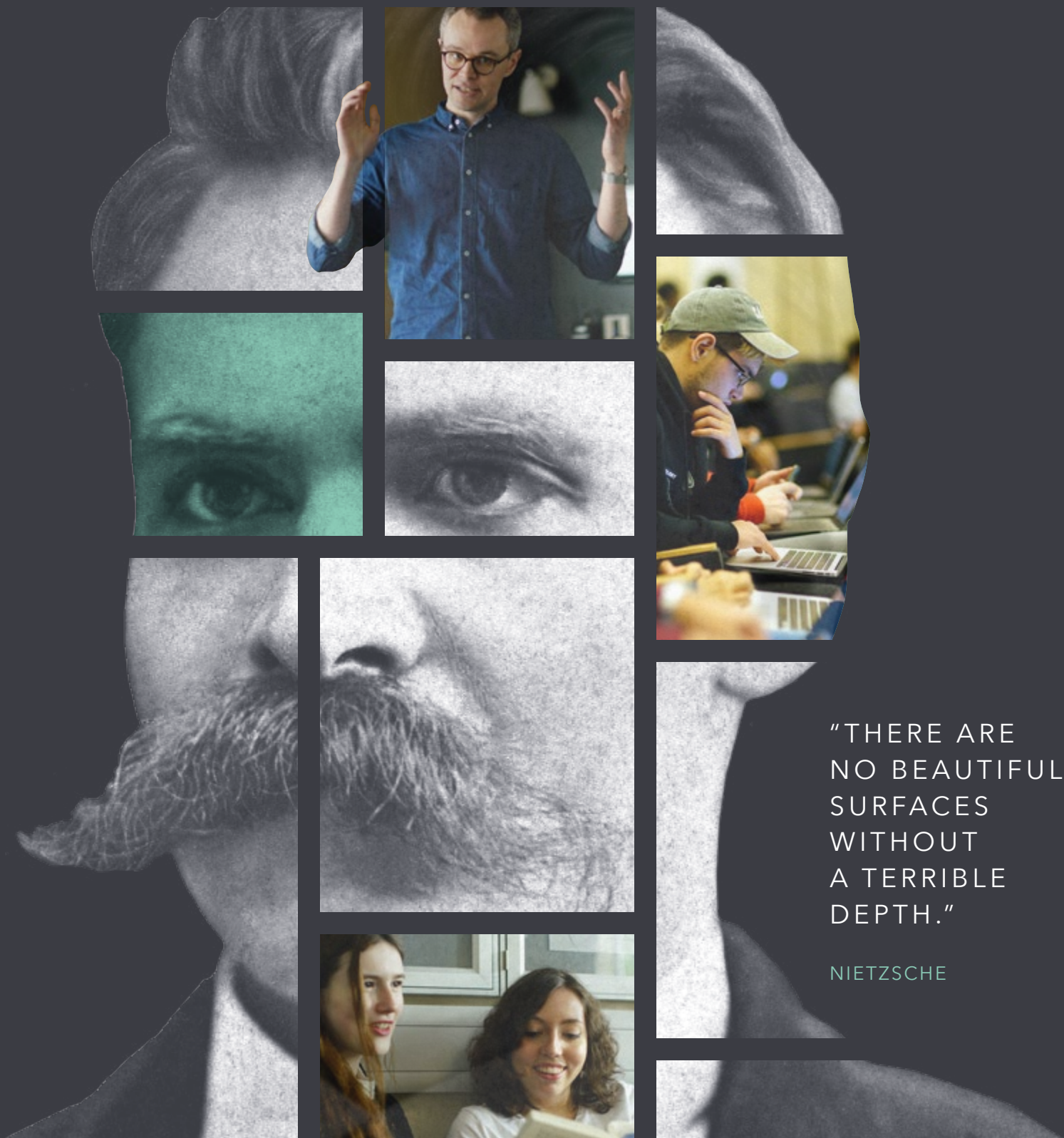
Philosophy Film Club - Organises weekly screening of philosophical films.

Philosophy Department Social Events - Evenings of philosophy talks, student and staff socialising, and pizza. Recent events have included the Philosophy Open House, Philosophy Question Time and Balloon Debates.

JOIN THE UNDERGRADUATE RESEARCH COMMUNITY

You can apply for the **Warwick Undergraduate Research Support Scheme**. If you are successful, you'll get a bursary and skills development training to carry out your summer research project, as an addition to your philosophy degree programme. This project is a fantastic opportunity for you to carry out research supervised by an academic member of staff. View some examples of URSS projects which philosophy students have completed at: www.warwick.ac.uk/urss

Reinvention is an open-access, online, peer-reviewed journal, dedicated to the publication of high-quality undergraduate student research. The journal welcomes academic articles from all disciplinary areas and all universities. Students play a strong and active role in this community, and the journal aims to support undergraduate students in their first venture into academic publishing.



"THERE ARE NO BEAUTIFUL SURFACES WITHOUT A TERRIBLE DEPTH."

NIETZSCHE

HOW TO APPLY

Applications are made through UCAS.

ucas.com

If you are made and accept an offer, and meet any outstanding conditions, we will confirm your place and look forward to warmly welcoming you at the start of your life here at Warwick.

For more detailed information about how we process applications please visit:
warwick.ac.uk/study/undergraduate/apply

OVERSEAS APPLICANTS

At Warwick, we welcome applications from across the globe, and have dedicated teams available to advise and support, as well as a global network of Agents and Representatives.

For more information on applying from your country see:
warwick.ac.uk/io

STUDENT FEES AND FUNDING

We want to ensure that, wherever possible, financial circumstances do not become a barrier to studying at Warwick. We provide extra financial support for qualifying students from lower income families.

warwick.ac.uk/studentfunding

ACCOMMODATION

We believe that where you live underpins your University experience. Warwick Accommodation manages around 7000 self-catering residences on campus. At Warwick, you'll enjoy the freedom of independent living alongside your fellow students but with the security of knowing you're surrounded by people who can support you should you need it. For more information visit:

warwick.ac.uk/accommodation

DISCOVER MORE

To find out more about the University, including opportunities to visit and engage with your department of choice, visit:

warwick.ac.uk/undergraduate/visits

Department of Philosophy
University of Warwick
Coventry
CV4 7AL
United Kingdom

📞 +44 (0)24 76150816

✉ ugphiladmissions@warwick.ac.uk

💻 warwick.ac.uk/philosophy

This course information was accurate at the time of publication (June, 2022). While the University tries to ensure that the information is accurate, it does not warrant that this is the case. The University may need to make changes including to the course content, syllabus, delivery, methods of assessment, or to comply with external accrediting or reviewing bodies. It is therefore important that you revisit the relevant course website before you apply and when you accept an offer to ensure you are viewing the most up to date information. This information should not be construed as an offer and nor does it create a contract or other legally binding relationship between the University and you or a third party. For full terms and conditions, please visit warwick.ac.uk/ugtermsandconditions

