

POLITICS, PHILOSOPHY AND LAW

UNDERGRADUATE
STUDY

WARWICK
THE UNIVERSITY OF WARWICK

CONTENTS

- 04 PPL at Warwick
- 06 Course structure
- 08 Adding a year to your programme
- 10 Your learning
- 12 Our students
- 16 Employability
- 17 Careers support
- 18 Entry requirements
- 20 How to apply



Politics, Philosophy and Law (PPL) at Warwick gives you the opportunity to study across three of the UK's most renowned Social Science departments and draw together subjects that are vital to understanding the world around us.

Immerse yourself in the study of three intrinsically related disciplines which shape our everyday lives.

POLITICS impacts directly on our ability to travel and work, where we can live, whether we are at war or peace, how children are educated and what rights we have. In the study of politics, you will learn to analyse and critically assess complex political debates, ideologies and institutions to develop a deeper understanding of the social and political world.

PHILOSOPHY interrogates the fundamental questions behind politics and the law, providing you with the structure, tools and techniques to form your own position: Should the state simply provide the rule of law, or should it also safeguard citizens' welfare and equality? How should we punish those who break the law? How do we know what is just?

LAW regulates the decisions of politicians, the actions of the State, and our own lives as individuals and collectively. The study of law will enable you to critically assess the origins of and values behind statutes, as well as how we should interpret them. You will learn to deconstruct and analyse individual legal cases, as well as examining wider legal issues. These include the balance between individuals and the State, and the philosophical underpinnings of legal topics such as crime, punishment, and individual and collective freedom.

As a PPL student at Warwick you will gain a strong understanding of the current key issues in each of these disciplines. You will learn how to analyse complex global issues such as human rights, immigration, conflict and climate change using powerful interdisciplinary approaches. The combined strength of the three disciplines will enable you to broaden your perspectives and to debate important current issues.

PPL AT WARWICK

EXCELLENT TEACHING AND RESEARCH

Our Politics, Philosophy, and Law departments are internationally renowned for their teaching and research. Politics and International Studies (PAIS) is one of the largest Politics departments in the country, ranked 2nd in the UK.* Philosophy is home to a unique mix of world-leading philosophers teaching an extensive range of options in different philosophical fields and traditions and is ranked 5th in the UK*. Our Law School is renowned for its "law in context" approach, examining the law from a comparative, critical and global perspective.

All our departments demonstrated their high-quality research in the most recent Research Excellence Framework (REF 2021), with all departments ranked in the top 10 of the fields. The teaching of your degree will reflect this world-class research, as you learn alongside experts who are passionate about their subjects.

BRIDGING THE DISCIPLINES

Our bridge model seeks to connect the synergies between the disciplines. Your first year core PPL module will allow you to explore both the differences and the intersections between the three subjects as you are taught by experts from all three disciplines. Topics will vary each year, but may include issues such as punishment and prisons, immigration, and paternalism. In your second and third years, you may also choose options from a range of modules both from within Politics, Philosophy and Law, and from other departments across the university. These could relate to one discipline or reach across subject boundaries.

INTERNATIONAL REACH

Studying with staff and students from over 40 countries, you'll draw on the diverse backgrounds, cultures, and experiences of your colleagues, as you debate and analyse crucial world issues. We have an excellent global reputation for research and teaching in Comparative Politics, Political Theory, and International Relations and Security. You'll gain insight into our particular strength in Continental Philosophy, exemplified by great European thinkers such as Schopenhauer, Nietzsche, Sartre and Deleuze. And you'll benefit from teachers with first-hand experience of teaching and practising law in over 15 non-UK jurisdictions, with diverse specialisms in International and European Law.

A VIBRANT COMMUNITY

With an engaged and enthusiastic community of students from all over the world, and members of academic staff across the three PPL departments, you will gain new insights and be encouraged to challenge your existing viewpoints. You will join researchers, volunteers, entrepreneurs and writers, who share your curiosity and love of learning. Within the departments, you may choose to develop your own skills beyond the lecture theatre through research assistantships and events, publishing opportunities and conference attendance.



88%

OF OUR PPL STUDENTS WERE SATISFIED WITH THE COURSE OVERALL**



100%

OF OUR PPL STUDENTS BELIEVED THE COURSE PROVIDED THEM WITH OPPORTUNITIES TO BRING INFORMATION AND IDEAS TOGETHER FROM DIFFERENT TOPICS**

* The Times and Sunday Times Good University Guide 2022
** National Student Survey (NSS) 2022



COURSE STRUCTURE

YEAR ONE

First Year comprises of foundation modules within each department. You will cover a broad range of issues and theoretical perspectives in Politics, and a wide range of historical and contemporary philosophical topics such as moral philosophy, aesthetics and logic in the introductory Philosophy module. In the Law School, you will explore the meaning of studying the Law in context and develop an understanding of the English legal method and theory.

Taught by experts from each department, your interdisciplinary PPL module enables you to critically examine the intersections of the three subjects. Topics are selected to draw on insights across the disciplines and to explore the political, philosophical and legal questions they raise.

Core modules:

- ▶ Introduction to PPL
- ▶ Introduction to Philosophy
- ▶ Introduction to Politics
- ▶ Understanding Law in Context

YEAR TWO

In your Second Year, you will take at least one full-year module from each of the three disciplines. You will also have the choice to take a further year-long module or two term-long modules either from within Politics, Philosophy and Law or from departments across the University.

Optional cores (you must choose one option per subject from a small group of modules):

- ▶ **Politics:** Foundations of Political Theory and Topics in Political Theory; Theories of International Relations; Core Issues in Comparative Politics; International Security; States and Markets: An Introduction to International Political Economy
- ▶ **Philosophy:** History of Modern Philosophy; Ethics and Applied Ethics
- ▶ **Law:** Law, State and the Individual; Tort Law; Criminal Law

YEAR THREE

In your Final Year, you can truly tailor your module choices to your own interests. There are no required modules, and you can focus on two of the subjects or all three.

You'll be able to choose from a large range of approved options in each department, and again have the option to take courses from other departments across the university.

You can also choose to write a final year dissertation in the field of your choice: Philosophy, Politics, Law, or a PPL interdisciplinary dissertation. Applying your knowledge and skills to independent research can allow you to pursue an area of particular interest in greater depth, preparing you well for further study, or helping you to stand out to employers.

"The modules I studied in First Year have provided a strong foundation which I am looking forward to developing in my studies. Incorporating historical and contemporary topics and learning how to apply them to a modern context has demonstrated how practical this degree is. Some of the topics I have engaged in include moral philosophy, aesthetics, logic, core concepts in political theory and politics as well the law. The interdisciplinary PPL module allowed us to explore the intersections of the subjects, broadening my knowledge whilst providing the opportunity to engage in a rich and diverse range of literature."

ZARA

"My favourite module in the First Year was Introduction to PPL. It really cemented my choice of degree because I could truly see how much these disciplines are interlinked. The module was an amazing space to learn how to make the connections between the subjects and foster the unique thinking that will help PPL students to stand out. I enjoyed the opportunity to encounter multiple academics from the PPL departments and learn from their interpretations of certain issues vary according to their specialism. Linking the Prisoner's Dilemma to the Trolley Problem whilst considering its legal implications is something that could only ever happen in PPL."

TEREZA



OPTIONAL MODULES

Our academics provide research-led teaching, which means that they keep content fresh and up-to-date with current thinking and developments in their subject. We also add new modules in line with research developments and in response to student feedback. So you'll be choosing from a varied selection of interesting specialisms and interdisciplinary options.

You will have a wide range of choices through your course so that you can explore the issues that interest you the most.

Politics and International Studies have multiple research clusters, whose world-leading work provides the basis for research-led teaching in areas such as comparative politics and democratisation, political theory, international political economy, and international relations and security.

In **Philosophy**, you will study with world-leading scholars in both analytic and continental philosophy. Historical modules focus on key works from the history of philosophy, while thematic modules will introduce you to contemporary treatments of philosophical problems. Recent modules have covered philosophical issues about race, evil, conspiracy theories, and making difficult decisions.

In **Law**, research is built on the twin themes of law in context and the international character of law. Areas of focus include international and comparative legal research, criminal justice, law and humanities, regulatory and

commercial law, human rights in practice, and the exploration of legal, social, and economic law and policy both in the UK and throughout the world.

Examples of options available in past years include:

- ▶ **Politics:** Gender and Development; War in the 21st Century; Politics of Globalisation; US Foreign Policy; Themes in European Integration; Capitalism and its Alternatives; International Relations of the Americas; The Politics of Climate Change; The Future of Work
- ▶ **Philosophy:** Philosophy of Religion; Introduction to Chinese Philosophy; Feminism; Sartre and Existentialism; Post-Kantian Social and Political Philosophy; Hegel and Marx; Aesthetics: Art, Beauty and the Sublime; Topics in Philosophy and Literature; The Philosophy of Terrorism and Counterterrorism
- ▶ **Law:** Human Rights in Practice; Gender and the Law; Medicine and the Law; An Introduction to Islamic Law; Writing Human Rights; Legal Issues of Brexit; Critical Perspectives on Forced Migration; Climate Change and Law; Issues in the Legal History of Race; History of the Philosophy of Law



CROSS DISCIPLINES

Optional modules are also available from outside the PPL departments. These can come from other areas in the Social Sciences, Humanities and Business School. Particularly popular are Sociology, Warwick Business School, Psychology, History, and interdisciplinary modules with IATL (Institute of Advanced Teaching and Learning).

LANGUAGES

Another option is to study a language. Languages are particularly popular if you intend to apply for a year abroad as part of your studies. We teach a wide variety of languages at Warwick, including Arabic, Chinese, French, German, Italian, Japanese, Korean, Portuguese, Russian and Spanish.

"The most enjoyable part of my course has been when entirely different modules (and departments) sometimes focus on very similar topics. In one week, both my international law and international security modules discussed international courts and their impact on human security. It was so cool to be able to analyse an issue from two distinct viewpoints. PPL has offered me countless examples like this which has broadened my understanding of topics and improved my degree experience more generally."

ROMAN

ADDING A YEAR TO YOUR PROGRAMME

STUDY ABROAD

You can apply to add an additional year to your degree programme by choosing to study abroad. If your application is successful, you'll go abroad between your second and final years. The grades you achieve abroad will not count directly towards your final degree, but if you pass the year your degree certificate will show you studied PPL for four years 'with intercalated year'.

Some examples of past destinations include*

- Australia** – Monash University, Melbourne, Australia with the opportunity to spend the second half of the year at the Monash Malaysia campus in Selangor
- Hong Kong** – City University of Hong Kong, Hong Kong University, Hong Kong University of Science and Technology
- China** – Tsinghua University
- Japan** – Hokkaido University, Waseda University
- South America** – Fundação Getulio Vargas, Brazil
- Europe** – A large number of partner universities in Austria, Denmark, France, Germany, Hungary, Italy, Netherlands, Norway, Spain and Sweden.

WORK PLACEMENT

You also have the opportunity to complete a professional work placement in the UK or abroad, as an intercalated (non-credit bearing) year between your second year and final year. By doing so, you will transfer from a three year degree to a four year 'intercalated year' degree.

You will source your own placements to gain genuine examples to support future applications and interviews, whilst also allowing you to begin applying the skills and knowledge you have been learning on the course.



"There are plenty of amazing and diverse options for an intercalated year through all three departments, and I took the opportunity to study in Salzburg, Austria. This was an incredible year abroad that taught me independence through living in an exciting and unique environment. Being a part of the Universität Salzburg community gave me new academic opportunities in both doing local language modules and specialist subjects that I would not have the opportunity to do in Warwick. Austria itself is a beautiful country that gave me a lot of experiences that make me consider it a second home. Without doing the intercalated year through PPL at Warwick I would never have had this opportunity."

OMAR

*Available placements may change by year of application.

YOUR LEARNING

Typically, you will have 10 to 15 hours of contact time per week through a combination of lectures and seminars. Lectures provide you with information, analysis and argument, on the basis of which you prepare for discussion or problem solving in your seminars. Seminars are much smaller groups, in which you deepen your learning through interactive group discussion, debates, and exchange of ideas. In your third year you may choose to place a stronger emphasis on individual research through a dissertation.

TEACHING METHODS

Tutors will provide you with reading, instructions, notes or tasks, and guide work and discussions. You'll be expected to prepare independently or in groups, and share your views and debate the issues and concepts with your classmates. Module tutors are available outside of class to give advice on essay writing and other matters related to their module. They will also give you feedback on your essays to help you improve your writing and problem-solving techniques.

SKILLS SESSIONS

Research training, personal and professional development are all embedded into your programme. Study skills will be built into your core modules in the first year, helping you develop your academic and case reading, essay writing, understanding of doctrines, theories and legal and political systems, exam technique, critical thinking and presentation skills.

We also offer specific sessions for second and third years in writing Politics and Philosophy essays, as well as the opportunity to try moot through the Law Society. Outside of the departments, Warwick offers the Warwick Award Programme and Academic Writing Programme to help you perfect a range of skills and develop yourself further.

"A valuable aspect of PPL is the variety of assessment methods available to students. Anything from exams to group projects, essays to presentations are available to choose from. In Politics, I have chosen to take as much coursework as possible to suit my strengths and preferences. The choice is made from several selections, so everyone has the chance to equally demonstrate their strengths."

ROMAN

LEARNING OUTSIDE OF YOUR DEGREE

To deepen your knowledge and develop skills beyond your degree, there are many opportunities to get involved with student societies, volunteer projects, research assistantships, debates and talks with high profile speakers.

ASSESSMENTS

You'll be assessed through a mix of exams, essays and other assessments, and you'll get extensive feedback to help you progress. You'll also have formative essays, which are assessments that may not necessarily contribute marks to your overall grade. They will, however, provide you with invaluable feedback on what is required from your degree, and guidance on how to develop your style and skills in preparation for your main assessments and exams. Some modules allow you to choose your assessment method, between essay or exam, or occasionally try different styles of assessment, such as filmmaking and blogging.



1ST

RANKED 1ST - UNIVERSITY OF THE YEAR FOR TEACHING QUALITY

(The Times and Sunday Times Good University Guide 2022)



OUR STUDENT COMMUNITY



"The PPL community is a proper family. Everyone is there to help in any way they can. A big part of that is the PPL Common Room - there is no better place on campus! Whether you are there to work or take a break, someone is always there for a chat, a debate, or a study session."

BEN

STUDENT SOCIETIES



"Being a part of Warwick Law Society has allowed me to understand all the possible routes into a legal career after my degree. They do an amazing job of connecting students to information on becoming qualified, as well as meeting lots of other aspiring lawyers."

SOPHIA

"The PPL Society's aim is to create a community of students who are willing to "question everything", as is our motto. PPL students joining Warwick in year one have the opportunity to be partnered up with an older PPL student who is there to help you find your feet. Throughout the year we host high-profile speakers and encourage our members to come along with their questions. Social events are also a key part of the society, we regularly host socials to help PPL students meet and develop friendships with their fellow classmates. But what we are most known for is our termly 'Dinner Party' events, an evening of food, fun and debate!"

MEGAN

SUPPORT

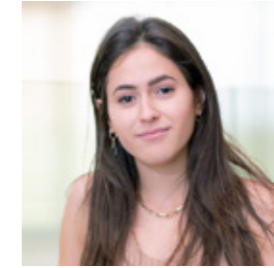


"The PPL office is tailored to assisting PPL students and has been an incredible resource throughout my degree. All of its members have been incredibly kind and helpful to me whenever problems arose throughout my degree. This ranged from assisting with scheduling clashes in modules or with paperwork for my year abroad.

Module leaders and seminar supervisors are also a great resource at Warwick and should actively be used by students to schedule meetings and talk to after class to discuss work, essays, and academic problems in your modules."

OMAR

STUDENT VOICE



"I was fortunate enough to be able to experience the role of the PPL Student-Staff Liaison Committee first hand. I was really pleased by how valued the student feedback was and the actual impact that it made. Throughout my time, we have helped to introduce changes to the degree which will make an impact on module choices for future PPL students. It has demonstrated that the programme is indeed shaped by student voice."

TEREZA

EMPLOYABILITY

PPL will equip you for a career in either the public or private sector, support your development towards postgraduate qualifications and develop your transferable skills in analysis, problem solving, and oral and written communication.

Our PPL alumni are pursuing diverse careers in areas such as law, marketing, the civil service, and finance as well as undertaking further study in subjects including Political Science, Marketing, Political Legal Theory, and Behavioural Science.

Employers specifically value graduates with an interdisciplinary degree from our departments because they:

- ▶ Have strong communication and presentation skills in both verbal discussion and writing
- ▶ Develop strategy and use creative thinking to solve complex problems
- ▶ Consider social and ethical issues in a structured and critical way
- ▶ Think clearly in the abstract, and construct sound and logical arguments
- ▶ Have intellectual autonomy, since much of their academic work is independent



5TH

MOST TARGETED
UNIVERSITY BY
THE UK'S TOP 100
GRADUATE EMPLOYERS

*(The Graduate Market in 2023,
High Fliers Research Ltd.)*

"The PPL degree has enabled me to build up the ability to analyse different topics from all three lenses simultaneously, thereby giving me a holistic understanding of any given topic. This proved to be incredibly useful in helping me secure a graduate job at the commercial law firm, Allen & Overy. The firm valued the ability to look at legal issues from a multidisciplinary perspective which I was able to demonstrate during the interview because of the skills I had developed during the PPL degree."

MOHAMMAD

"The PPL course encouraged me to constantly push boundaries, to find the intersections between everything around me, and to ignite unique change. I was constantly inspired by the faculty, my classmates, and by the structure of the degree itself. Studying at the intersections between law, politics, and philosophy pushed me towards the field of conflict resolution and alternative forms of dispute resolution where I could explore these intersections further. I am currently extending my PPL education through an MSc in Negotiation and Conflict Resolution at Columbia University."

MAYA

Please note that the PPL degree is not available as a Qualifying Law Degree. The Solicitor's Regulation Authority (SRA) has introduced a new route to qualifying as a solicitor. Now, any graduate from any discipline is able to take the Solicitors Qualifying Examination (SQE).

CAREERS SUPPORT

The Warwick Student Opportunity team exists to enable Warwick students and graduates to devise and implement their long-term career plans. They run a packed programme of employer led skills workshops and host a series of major careers fairs each year.

- ▶ Warwick Award Programme, which recognises extra-curricular contributions to employability, such as training courses and co-curricular activities. It can help you to identify and articulate your skills.
- ▶ Departmental-level workshops for all students on all aspects of careers - applications and CVs, mock interviews and further study, and going overseas. You can also see careers advisors one-to-one at any stage of your course and after graduation.
- ▶ Careers events run periodically and you can seek advice on personal development and career planning from your personal tutor. You will also find that there is a wide range of societies focused on careers specific skills.



ENTRY REQUIREMENTS

A level: AAA

IB: 38 points

We welcome a range of A level equivalent qualifications from across the world. We also encourage applications from candidates with Access to HE Diploma (QAA-recognised), including appropriate subjects with distinction grades in level 3 units, and students who complete the Warwick International Foundation Programme (IFP).

If you're unsure what the level is for you, just get in touch ugadmission@warwick.ac.uk

Please check our website for the most up-to-date information: warwick.ac.uk/study/undergraduate/courses/ppl



HOW TO APPLY

Everything you need to know about applying to Warwick is on our web pages. There is up-to-date information about:

- How to apply
- Writing your personal statement
- Key dates and deadlines
- How we process your application
- After you've applied

If you are made and accept an offer, and meet any outstanding conditions, we will confirm your place and look forward to warmly welcoming you at the start of your life here at Warwick.



How to apply:
warwick.ac.uk/study/undergraduate/

OVERSEAS APPLICANTS


At Warwick, we welcome applications from across the globe, and have dedicated teams available to advise and support, as well as a global network of Agents and Representatives.




Overseas application advice:
warwick.ac.uk/io

**Politics, Philosophy
and Law**
University of Warwick
Coventry
CV4 8UW



 +44 (0)24 7652 2582

 ppl@warwick.ac.uk

 warwick.ac.uk/ppl

STUDENT FEES AND FUNDING

We want to ensure that, wherever possible, financial circumstances do not become a barrier to studying at Warwick. We provide extra financial support for qualifying students from lower income families.



Fees and funding:
<https://warwick.ac.uk/studentfunding>

ACCOMMODATION

We manage approximately 7,500 self-catered rooms on campus for different budgets and requirements. Living on campus in your first year gives you the opportunity to meet people and form friendships whilst never being more than a short distance from your lectures or our amazing campus facilities. At Warwick, you'll enjoy the freedom of independent living with the security of knowing you're surrounded by people who can support you.



Living on campus:
warwick.ac.uk/accommodation

DISCOVER MORE

If you have questions about living and studying at Warwick, speak to our current students to get answers on:

- Campus life
- Accommodation
- Study support, wellbeing and more



Unibuddy:
warwick.ac.uk/study/unibuddy

Disclaimer: This course information was accurate at the time of publication (May, 2023). While the University tries to ensure that the information is accurate, it does not warrant that this is the case. The University may need to make changes including to the course content, syllabus, delivery, methods of assessment, or to comply with external accrediting or reviewing bodies. It is therefore important that you revisit the relevant course website before you apply and when you accept an offer to ensure you are viewing the most up to date information. This information should not be construed as an offer and nor does it create a contract or other legally binding relationship between the University and you or a third party. For full terms and conditions, please visit warwick.ac.uk/ugtermsandconditions