

UNDERGRADUATE
STUDY



WARWICK
THE UNIVERSITY OF WARWICK



**POLITICS,
PHILOSOPHY
AND LAW**

WHY PPL AT WARWICK?

Address Current Issues

How do global and legal institutions address issues of human rights, environmental sustainability, and social justice on an international scale? In what ways do philosophical perspectives contribute to the understanding of justice and the resolution of contemporary societal challenges? How do legal frameworks intersect with political dynamics, and what role does the law play in shaping common norms?

Studying Politics, Philosophy and Law (PPL) enables you to develop your own answers to these questions and to consider the world from the viewpoint of philosophers, lawyers and political scientists.

95%

of our PPL students felt they had the chance to explore ideas and concepts in depth



National Student Survey (NSS) 2023

Bridge the Disciplines

Instead of studying the three subjects independently, our bridge model enables you to explore how the topics interact. You will focus on important real-life issues at the intersection of the disciplines and examine them from a truly interdisciplinary perspective.

Examples of recent topics include climate change, migration and refugees, punishment and prisons, and paternalism.

Flexibility to Specialise

You'll have the flexibility to tailor your degree to your own interests by choosing from a range of core and optional modules throughout your degree. In your final year, there are no mandatory modules, and you can choose to study all three subjects in equal proportions, or you may focus on two of the three subjects in more depth.

In addition to core modules carefully designed to provide you with a solid foundation in all three subjects, you will be able to choose from a wealth of optional modules. You will also have the opportunity to take options from at least one other subject area, such as business, psychology, sociology, history or modern languages.

An International Perspective

You will be part of a community of around 50 PPL students in your year group, with approximately 15% of students coming from outside the UK. With an engaged and enthusiastic community of students from all over the world, and members of academic staff across the three PPL departments, you will gain new insights and be encouraged to challenge your existing viewpoints.



My favourite thing about the PPL course is being able to study interdisciplinary topics as well as studying each subject individually. Our 'Introduction to PPL' module looks at ideas such as punishment and freedom of speech which I've really enjoyed debating! Everyone on the course offers different perspectives - and I like that there are not really any wrong answers.

// Sophia

Three Leading Departments

Warwick's Politics, Philosophy and Law departments are internationally renowned for their teaching and research and are ranked top 100 in the world*. All three departments are consistently ranked highly in leading UK subject league tables, with Politics ranked 2nd in the country, Philosophy ranked 4th and Law ranked 10th in their fields.**

* QS World Rankings 2024

** The Times and Sunday Times Good University Guide 2024

As a Warwick PPL student, you'll benefit from access to the huge range of modules available across the departments, allowing you to pursue your own areas of interest through innovative, research-led teaching.



THE COURSE

YEAR ONE

PPL Foundations

Your PPL programme will support you with the foundations of the disciplines and enable you to specialise and hone your skills to best suit your interests and career path.

Your first year comprises foundation modules in each department.

- Introduction to Politics
- Introduction to Philosophy
- Understanding Law in Context
- Introduction to PPL

In Politics you will study some of the core ideologies in political science, combining theory and political practice. In the introductory Philosophy module, you'll study a wide range of historical and contemporary philosophical topics such as moral philosophy, aesthetics, and logic. In the Law School, you will explore the meaning of studying the Law in context and develop an understanding of the English legal method and theory.

Taught by experts from each department, your interdisciplinary PPL module enables you to critically examine the intersections of the three subjects. Topics are selected to draw on insights across the disciplines and to explore the political, philosophical and legal questions they raise.

"My favourite module in the first year was Introduction to PPL. It really cemented my choice of degree because I could truly see how much these disciplines are interlinked. The module was an amazing space to learn how to make the connections between the subjects and foster the unique thinking that will help PPL students to stand out. I enjoyed the opportunity to encounter multiple academics from the PPL departments and learn how their interpretation of certain issues vary according to their specialism. Linking the Prisoner's Dilemma to the Trolley Problem whilst considering its legal implications is something that could only ever happen in PPL."

// Tereza

The modules I studied in first year have provided a strong foundation which I am looking forward to developing in my studies. Incorporating historical and contemporary topics and learning how to apply them to a modern context has demonstrated how practical this degree is. Some of the topics I have engaged in include moral philosophy, aesthetics, logic, core concepts in political theory and politics as well as law. The interdisciplinary PPL module allowed us to explore the intersections of the subjects, broadening my knowledge whilst providing the opportunity to engage in a rich and diverse range of literature.

// Zara



YEAR TWO

Tailor Your Degree

In your second year, you will take at least one full-year module from each of the three disciplines. You will also have the choice to take a further year-long module or two term-long modules either from within Politics, Philosophy and Law or from departments across the University.

Politics

One of:

- Foundations of Political Theory and Topics in Political Theory
- Theories of International Relations
- Core Issues in Comparative Politics
- International Security
- States and Markets: An Introduction to International Political Economy

Philosophy

One of:

- History of Modern Philosophy
- Ethics and Applied Ethics

Law

One of:

- Law, State and the Individual
- Tort Law
- Criminal Law

Pursue Your Interests

You will then choose one or two optional modules, either within the three departments or from other departments in the Humanities and Social Sciences faculties. You can take this opportunity to explore a PPL topic in greater depth, or to expand your studies with departments including Sociology, History, the Business School and Language Centre.

Important Information

We are planning to make some exciting changes to modules on our degrees for 2025 entry. As modules are approved, we will update the course information on the website, so please check there before you apply and prior to accepting an offer.

YEAR THREE

Flexibility to Specialise

In your final year, you can truly tailor your module choices to your own interests. There are no required modules, and you can elect to focus on two of the subjects or all three.

You'll be able to choose from a large range of approved options in each department, and again have the option to take courses from other departments across the university. Many students also choose to take a dissertation or a research project either in PPL or in a field of their choice.

"The most enjoyable part of my course has been when entirely different modules (and departments) sometimes focus on very similar topics. In one week, both my international law and international security modules discussed international courts and their impact on human security. It was so cool to be able to analyse an issue from two distinct viewpoints. PPL has offered me countless examples like this which has broadened my understanding of topics and improved my degree experience more generally."

// Roman

"The PPL dissertation is an innovative project that can only be undertaken by students doing PPL. The project itself is the apex of the programme, in presenting students with the freedom to choose an altogether unique and personalised topic to research. This is then filtered through specialists from two departments who guide you through the complexities your topic presents. Unlike other dissertations at Warwick, the PPL dissertation provides a much broader focus, applicable to many careers, which exemplifies the strengths of the degree. My dissertation on Intersectional Identity in Asylum Claims was a passion project that I loved investing time into writing. I have also had many opportunities to refer to this project in successful subsequent interviews."

// Omar

OPTIONAL MODULES

Combine Your Passions

Our academics provide research-led teaching, which means that they keep content fresh and up-to-date with current thinking and developments in their subject.

We also add new modules in line with research developments and in response to student feedback. So you'll be choosing from a wide selection of interesting specialisms and interdisciplinary options.

Politics and International Studies have four research clusters, whose world-leading work provides the basis for research-led teaching in comparative politics and democratisation, political theory and public policy, international political economy, and international relations and security.

In Philosophy, you will study with world-leading scholars in both analytic and continental philosophy. Topics in past years have included: Hegel, Nietzsche, Sartre, Film, Aesthetics, Feminism, Time, Terrorism, and Mind.

In Law, research is built on the twin themes of law in context and the international character of law. Areas of focus include international and comparative legal research, criminal justice, law and humanities, regulatory and commercial law, human rights in practice, and the exploration of legal, social, and economic law and policy both in the UK and throughout the world.

A selection of modules offered by the departments in recent years includes:

Politics and International Studies

- Politics of the USA
- Public Policy for 21st Century Challenges
- The Politics of Climate Change
- Politics in Eastern Africa
- EU Policy Making
- Race and International Politics
- The Future of Work
- Russia in World Politics
- Gender, Race and Militarism
- Discrimination and Appearance

Philosophy

- Freedom, Blame, and Moral Responsibility
- Thought and Language
- Philosophy of Evil
- Vagueness
- Feminism
- Moral Epistemology
- Kant's Ethical Theory
- Montaigne's Essays

Law

- Foundations of European Law
- Contemporary Challenges in Contract Law
- Global Intellectual Property Law and Policy
- Comparative Constitutional Law
- Restorative Justice
- Writing Human Rights
- Criminal Evidence
- Gender and the Law

Cross Disciplines

As well as focusing on individual disciplines, there is also a high degree of intellectual freedom to cross 'traditional' topic lines, as you can see from the selection of interdisciplinary modules taken in past years:

- Democracy: Authority and Resistance
- Politics of Globalisation
- Public Policy for 21st Century Challenges
- Capitalism and its Alternatives
- Gender and Development
- Post-Kantian Social and Political Philosophy
- The Philosophy of Terrorism and Counterterrorism
- Crime and Punishment
- Climate Change and Law
- History of the Philosophy of Law
- Labour Law in Context
- The Laws of War
- Critical Perspectives on Forced Migration

Explore New Subjects

Optional modules are also available from outside the departments. These can come from other areas in the Social Sciences and Humanities. Particularly popular are Warwick Business School, Psychology, Sociology, History, and interdisciplinary modules with the Institute of Advanced Teaching and Learning.

Another option is to study a language. Languages are particularly popular if you intend to apply for a year abroad as part of your studies. We teach a wide variety of languages at Warwick, including Arabic, Chinese, French, German, Italian, Japanese, Korean, Portuguese, Russian and Spanish.



YOUR LEARNING

Teaching

Most modules are taught using a combination of weekly lectures and seminars. Lectures provide you with information, analysis and argument, on the basis of which you prepare for discussion or problem solving in your seminars.

Seminars are much smaller groups, in which you deepen your learning through interactive group discussion, debates, and exchange of ideas. Tutors will provide you with reading, instructions, notes or tasks, and guide work and discussions. You'll be expected to prepare independently or in groups and share your views and debate the issues and concepts with your classmates.

Class Size

In the majority of your modules, you will learn alongside students on single honours and other joint degrees, exposing you to a wide range of knowledge. Therefore, some core module lectures may have up to 500 students in them, while optional module lectures may have from 30 up to around 200. Seminars usually have 14 to 18 students.



1st



The Times and Sunday Times named Warwick University of the Year for Teaching Quality in 2022

Contact Hours

Each module has roughly three hours of contact hours per week, so when studying four modules per term you will receive around 12 hours of contact time per week. In your third year you may choose to place a stronger emphasis on individual research by writing a dissertation.

Alongside timetabled teaching, you are encouraged to make use of regular feedback sessions and opportunities to speak with module directors and seminar tutors. Departments also offer many extra academic activities, including optional lectures, colloquia, discussion groups and workshops.

Independent Learning

You will also be expected to undertake independent study, helping you to develop your critical thinking and research skills. This environment of independent study will equip you with key skills for future careers, fostering self-discipline, initiative, and a proactive approach to challenges.

Assessments

You'll be assessed through a mix of exams, essays and other assessments, and you'll receive extensive feedback to help you progress. You'll also have formative essays, which are assessments that may not necessarily contribute marks to your overall grade. They will, however, provide you with invaluable feedback on what is required from your degree, and guidance on how to develop your style and skills in preparation for your main assessments and exams. Some modules allow you to choose your assessment method, or occasionally try different styles of assessment, such as writing policy briefs, filmmaking, and blogging.



"A valuable aspect of PPL is the variety of assessment methods available to students. Anything from exams to group projects, essays to presentations are available to choose from. In Politics, I have chosen to take as much coursework as possible to suit my strengths and preferences. The choice is made from several selections, so everyone has the chance to demonstrate their strengths."

// Roman

STUDY ABROAD

Broaden Your Horizons

Studying abroad will encourage you to embrace different perspectives, challenge traditional ways of thinking, and provide an opportunity to fully immerse yourself in another culture.

Studying PPL gives you access to a wide range of prestigious universities around the world via the three departments, all with their own long-standing partnerships.

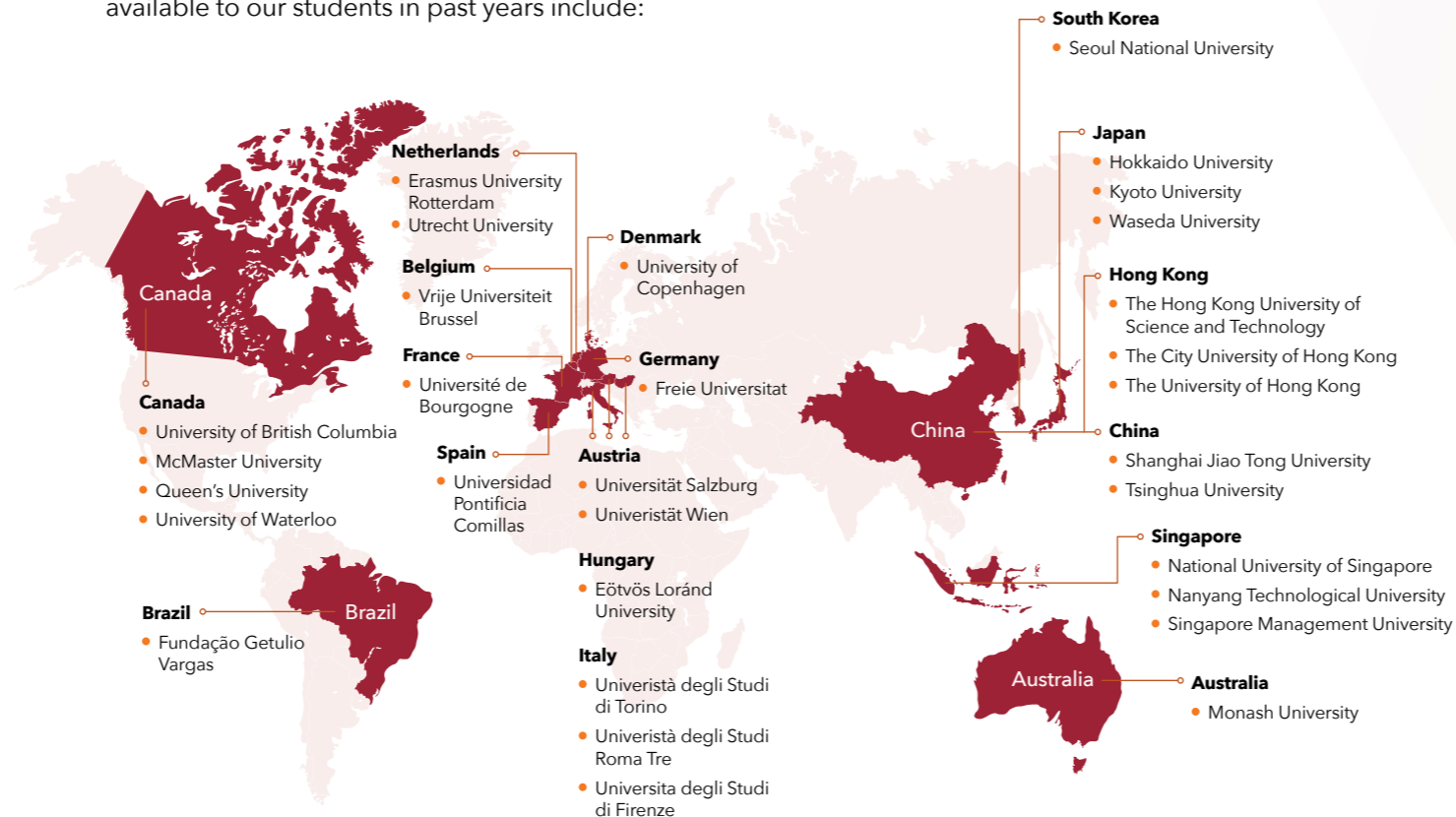
Intercalated: Study Abroad Adding a Year to Your Degree

An intercalated year will add one year to your degree programme, with your year abroad taken between your second and final years. The grades obtained don't count directly towards your degree, but if you pass the year then your degree certificate will show "with intercalated year".

You will be invited to apply during the first term of second year. It is a competitive process, but there are a lot of opportunities. Each year roughly 15% of PPL students from a cohort study abroad.

Partner Universities

Examples of study abroad destinations* available to our students in past years include:



* This list is illustrative - partners are subject to change. Study abroad opportunities cannot be guaranteed.

WORK PLACEMENTS

Apply Theory to Practice

Work placements provide an opportunity for you to develop skills, learn from industry professionals as well as explore a future career path.

You can undertake a full-year or part-year intercalated work placement in the UK or abroad. You could even combine a part-year placement with a part-year study abroad placement. We provide support and guidance around identifying and applying for placements.

Our students have undertaken placements with employers from the private, public, and third sectors. This includes Governmental Bodies, Consultancies, Research Institutions, and many more.

There are plenty of amazing and diverse options for an intercalated year through all three departments, and I took the opportunity to study in Salzburg, Austria. This was an incredible year abroad that taught me independence through living in an exciting and unique environment. Being a part of the Universität Salzburg community gave me new academic opportunities in both doing local language modules and specialist subjects that I would not have the opportunity to do in Warwick.

// Omar

BEYOND STUDY

Our Community

We think it's important to ensure that PPL students have their own identity and community. You will have your own facilities, with a dedicated PPL office and common room which acts as a hub for PPL students to gather, debate, and work together. The dedicated PPL academic staff are located in the three departments which are nearby. The Social Sciences building is right in the heart of campus next to the Library, Arts Centre, and near to the main lecture theatres.

We also organise social events for you to relax and get to know your peers and tutors outside of the classroom. Recent socials have included a quiz night, summer barbecue, and pizza lunch. We also hold an annual dinner and welcome PPL alumni back to campus to share their career experiences.

Research Opportunities

You can explore real-world applications of your academic interests through our research assistantship scheme. You will be able to assist faculty members with their own work, providing you with invaluable hands-on experience and insights into their research.

The Warwick Undergraduate Research Scholarship Scheme gives you the opportunity to carry out a summer research project whilst being supervised by an academic member of staff. You will receive living expenses and skills development training.

In addition, PPL students regularly take part and present at both the International Conference for Undergraduate Research (ICUR) and British Conference for Undergraduate Research (BCUR).

Legal Skills

Warwick Law School pioneered the "law in context" approach, encouraging students to examine the law in its various contexts. As a result, they are also dedicated to providing opportunities for you to gain practical skills alongside your studies.

The Death Penalty Project works with defence attorneys in capital punishment trials in the USA, and over its 20-year run hundreds of Warwick Law School students have contributed.

Warwick Law in the Community works in partnership with the Central England Law Centre to create opportunities for students to be involved in client-focused legal work. In the Immigration and Asylum Clinic you can conduct legal research, see clients, draft representations for legal aid, and assist in representing individuals and families in appeals and applications for judicial review.

The Strategic Social Justice Clinic tackles issues that go beyond individual cases by working collaboratively to undertake action, research, and draft Freedom of Information requests, identify systemic issues arising from real cases, produce bespoke education materials, and contribute to government reviews.

//

The PPL community is a proper family. Everyone is there to help in any way they can. A big part of that is the PPL Common Room - there is no better place on campus! Whether you are there to work or take a break, someone is always there for a chat, a debate, or a study session.

// Ben



SUPPORTING YOU

Dedicated Staff

You will benefit from a team of committed faculty and administrative staff, ensuring that you have personalised guidance in navigating the interdisciplinary nature of the programme.

The PPL Director and Co-Directors are academic staff from each of the three departments who are responsible for the operation and design of the PPL programme. They can provide personalised mentorship and support, helping you to navigate the degree in a way that aligns with your unique strengths, interests, and career aspirations.

The PPL Office will be your first port of call for any enquiries, meaning that you have one team who can assist with any area of your degree.

Individual Support

You will be assigned a Personal Tutor, who will be an academic member of staff from one of the three departments. They will be your contact for general academic questions and will be able to support you through any personal difficulties. Your termly meetings will be an opportunity to discuss your progression and review your skills.

Your Wellbeing

The PPL Senior Tutor oversees the Personal Tutor system and is available to students with more complex or ongoing pastoral issues. As well as our programme support, you'll also have access to the provision of the Wellbeing Support Services, which includes the Disability and Counselling teams.

Student Mentors

When you arrive, you will be paired with a PPL student mentor who will help you to navigate the complexities of the interdisciplinary programme. They will be able to share their experiences, answer your questions, and offer practical advice all while welcoming you to the PPL community.

//

Being a part of Warwick Law Society has allowed me to understand all the possible routes into a legal career after my degree. They do an amazing job of connecting students to information on becoming qualified, as well as meeting lots of other aspiring lawyers.

// Sophia

STUDENT SOCIETIES

Warwick's Social Life

Warwick has more than 300 student-run clubs and societies, providing a wealth of opportunities for you to meet students with similar interests.

The PPL Society brings together all students with an interest in the disciplines, as well as serving an important role for students on the course. The Society runs speaker events, offers peer-support, provides career development, and arranges a range of social activities from sports teams and international trips, to dinner parties.

The PPL office is tailored to assisting PPL students and has been an incredible resource throughout my degree. All of its members have been incredibly kind and helpful to me whenever problems arose throughout my degree. This ranged from assisting with scheduling clashes in modules or with paperwork for my year abroad. Module leaders and seminar supervisors are also a great resource at Warwick and should actively be used by students to schedule meetings and talk to after class to discuss work, essays, and academic problems in your modules.

// Omar

P, P and L Societies

Other popular societies of course include the Politics Society, Philosophy Society and Law Society, which all provide opportunities to engage with the subjects outside of lessons. You can attend talks from prominent speakers, contribute to the society magazines, and broaden your network via a range of social events. Student societies also maintain alumni and industry links and support students with career skills and contacts.

"The PPL Society's aim is to create a community of students who are willing to "question everything", as is our motto. PPL students joining Warwick in first year have the opportunity to be partnered up with an older PPL student who is there to help you find your feet. Throughout the year we host high profile speakers and encourage our members to come along with their questions. Social events are also a key part of the society, we regularly host socials to help PPL students meet and develop friendships with their fellow classmates. But what we are most known for is our termly 'Dinner Party' events, an evening of food, fun and debate!"

// Megan

WHERE CAN PPL TAKE YOU

A Broad Skillset

Studying PPL will equip you with highly transferrable skills in critical thinking and the ability to construct and explain complex arguments. The interdisciplinary nature of PPL fosters adaptability, which will allow you to navigate multi-layered challenges and contribute meaningfully to a wide range of sectors.

Careers Support

Our Student Opportunity careers team can help you to devise and implement your career plans at any stage of your course and up to three years after graduation. They provide skills training, employer-led workshops, alumni talks, and regular careers fairs. You can also benefit from one-to-one bespoke careers advice and skills development with our PPL Careers Consultant.

PPL Student Ambassadors

During your time at Warwick, you can apply to become a PPL Student Ambassador; a role which will build your communication and interpersonal skills as you share your passion for the degree and for Warwick. As well as assisting both prospective and current PPL students, you will have further opportunities to work alongside staff on the programme.

PPL Graduate Careers

Our PPL alumni are pursuing diverse careers in areas such as law, marketing, consultancy, the civil service, teaching, human resources, and finance.

PPL Graduate Further Study

PPL graduates have gone on to pursue the following postgraduate programmes at leading institutions in the UK, Europe, North America, and throughout the world:

Energy and Climate Change, Political Science, Marketing, Negotiation and Conflict Resolution, Behavioural Science, US Foreign Policy, International Development, Political Legal Theory, Democracy and Comparative Politics, Psychology, Global Environment and Climate Change Law, Philosophy, International Relations, and Defence, Development and Diplomacy



“The PPL course encouraged me to constantly push boundaries, to find the intersections between everything around me, and to ignite unique change. I was constantly inspired by the faculty, my classmates, and by the structure of the degree itself. Studying at the intersections between Law, Politics, and Philosophy pushed me towards the field of conflict resolution and alternative forms of dispute resolution where I could explore these intersections further. I therefore extended my PPL education through an MSc in Negotiation and Conflict Resolution at Columbia University.”

// Maya

“The PPL degree has enabled me to build up the ability to analyse different topics from all three lenses simultaneously, thereby giving me a holistic understanding of any given topic. This proved to be incredibly useful in helping me secure a graduate job at the commercial law firm, Allen & Overy. The firm valued the ability to look at legal issues from a multidisciplinary perspective which I was able to demonstrate during the interview because of the skills I had developed during the PPL degree.”

// Mohammad

ENTRY REQUIREMENTS

A level: AAA

IB: 36 points

We welcome a range of A level equivalent qualifications from across the world. We also encourage applications from candidates with Access to HE Diploma (QAA-recognised), including appropriate subjects with distinction grades in level 3 units, and students who complete the Warwick International Foundation Programme (IFP).

If you're unsure what the level is for you, just get in touch ugadmissions@warwick.ac.uk

Please check our website for the most up-to-date information: warwick.ac.uk/study/undergraduate/courses/ppl



HOW TO APPLY

Everything you need to know about applying to Warwick is on our web pages. There is up-to-date information about:

- How to apply
- Writing your personal statement
- Key dates and deadlines
- How we process your application
- After you've applied

If you are made and accept an offer, and meet any outstanding conditions, we will confirm your place and look forward to warmly welcoming you at the start of your life here at Warwick.



OVERSEAS APPLICANTS

At Warwick, we welcome applications from across the globe, and have dedicated teams available to advise and support, as well as a global network of Agents and Representatives.



CONTEXTUAL OFFERS

We're committed to supporting students from diverse and under-represented backgrounds. We do this in a variety of ways, including through our contextual admissions policy which is designed to ensure fairness in our admissions processes.



STUDENT FEES AND FUNDING

We want to ensure that, wherever possible, financial circumstances do not become a barrier to studying at Warwick. We provide extra financial support for qualifying students from lower income families.



ACCOMMODATION

We manage approximately 7,500 self-catered rooms on campus for different budgets and requirements. Living on campus in your first year gives you the opportunity to meet people and form friendships whilst never being more than a short distance from your lectures or our amazing campus facilities. At Warwick, you'll enjoy the freedom of independent living with the security of knowing you're surrounded by people who can support you.



CHAT TO OUR STUDENTS ON UNIBUDDY

If you have questions about living and studying at Warwick, speak to our current students to get answers on:

- Campus life
- Accommodation
- Study support, wellbeing and more





WARWICK
THE UNIVERSITY OF WARWICK

Politics, Philosophy and Law

The University of Warwick
Coventry
CV4 8UW



 +44 (0)24 7652 2582

 ppl@warwick.ac.uk

 warwick.ac.uk/ppl

Disclaimer: This course information was accurate at the time of publication (May, 2024). While the University tries to ensure that the information is accurate, it does not warrant that this is the case. The University may need to make changes including to the course content, syllabus, delivery, methods of assessment, or to comply with external accrediting or reviewing bodies. It is therefore important that you revisit the relevant course website before you apply and when you accept an offer to ensure you are viewing the most up to date information. This information should not be construed as an offer and nor does it create a contract or other legally binding relationship between the University and you or a third party. For full terms and conditions, please visit warwick.ac.uk/ugtermsandconditions