



Distance Learning MBA Careers Provision

CareersPlus



How we can help you

- Career consultations
- Executive coaching
- External events
- Leadership & Development Day
- Mentoring
- Online resources
- Professional Networks & Clubs



Career consultations

- 1 x career consultation throughout your degree, covering themes such as:
- Not sure what your next step looks like?
- Looking to make a career transition?
- Reviewing your CV / applications
- Get advice & support on your job hunting strategy
- Practice your interview skills
- Discuss on boarding and how to make an impact in a new job
- Or anything else careers related...
- [Book in here](#)
 - Further career consultations can be purchased via the [CareersPlus shop](#)



Executive coaching

- 1 hour of Executive coaching as part of your degree
- Executive coaching can help with:
 - Understanding more about yourself
 - Maximising your true potential
 - Managing stress, conflict and change
 - And so much more...
- More sessions can be purchased via the [CareersPlus shop](#)



External events

- Please check my.wbs for more information on events
- Here are a sample of case competitions that students have participated in:
 - Airbus: Fly Your Ideas
 - Barclays Challenge Africa
 - BP Global Challenge
 - CIMA Global Business Challenge
 - International Business Ethics Case
 - KPMG International Case Study
 - McKinsey Case Study Adventure
 - Tata Business Leadership Award



Leadership Day

- 360 self-assessment
- Conflict management
- Cultural competence
- Facilitated networking
- Group coaching
- Self-awareness
- Values



Mentoring

- Mentors can help to provide unbiased support, guidance and motivation
- Discussion topics can include:
 - Career planning
 - Goal setting
 - Soft skills
- All mentors are WBS alumni and appreciate the journey you are on and can provide their own career insight

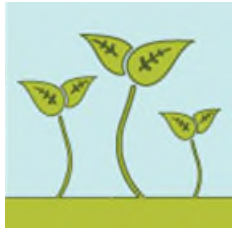


Online resources

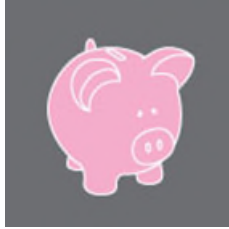
- All online resource can be found on [My.WBS](#)
- [WBS Career Management Module](#)
- Some common online resources are:
 - [Case Coach](#)
 - [FT](#) (free access)
 - [Marketline Advantage](#)
 - [Sonru](#) (video interview software)
 - [Workmaze](#) (Executive recruitment guides)
 - [VMock](#) (automated CV review software)



Professional networks



Entrepreneurship



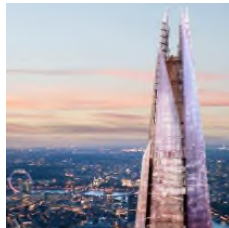
Finance



Global Energy



Life Sciences & Healthcare



London



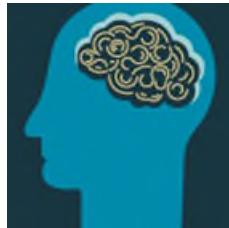
Midlands



Professional Women



Real Estate



Strategy & Consulting



Technology



Clubs

- Clubs have been created by Full Time MBA students
- For further details, please contact each club or ftmbacareers@wbs.ac.uk
 - [MBA Black in Business](#)
 - [MBA Women in Business](#)
 - [MBA Marketing](#)
 - [Community Impact](#)
 - [Social Impact](#)
 - [Finance/FinTech](#)
 - [Opswick](#) (Operations & Supply Chain)
 - [Strategy & General Management](#)



Your Part Time MBA Team



[Sarah Jackson](#)
[MBA Careers Manager](#)



[Nita Lad](#)
[PTMBA Careers Coach](#)



[Anil Ram](#)
[PTMBA Careers Manager](#)