



Thomson Reuters Eikon – Microsoft Office Add-In

With an open and connected set of services, Eikon enables you to act with confidence in every moment. It gives you easy access to the precise content you need, delivered at speed, filtered by relevance and displayed in a highly visual way that's easy to grasp and act on.

We have combined Eikon's vast content with advanced tools in Microsoft Office, so you can bring all data from your sources in one place and organize it to suit your workflow in a cutting edge desktop. Through Microsoft Excel, PowerPoint and Word you can organize, manipulate and visualize your data in new and creative ways, giving you the edge on decision making.

Key Benefits

Access Thomson Reuters premium content where you need it

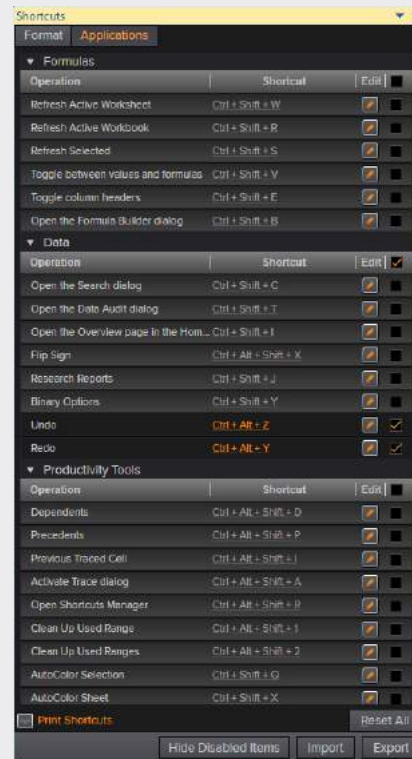
- Price data, Fundamentals, Estimates, Funds, Economic Indicators, Indices, Corporate Actions, Deals, Fixed Income, Events, Credit Ratings, StarMine Models, Industry KPIs, and more

Build Models fast and with ease

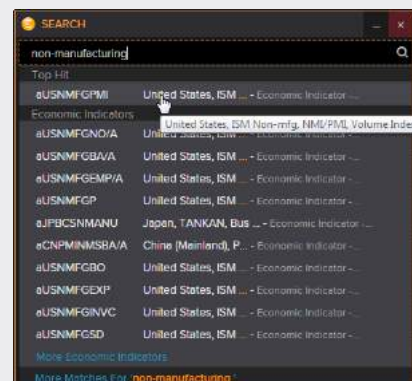
- Intuitive search tools with natural language search and autosuggest save you time
- In-cell function building for fast access to data in Excel
- Extensive keyboard shortcut menu

Excellent performance-update models rapidly

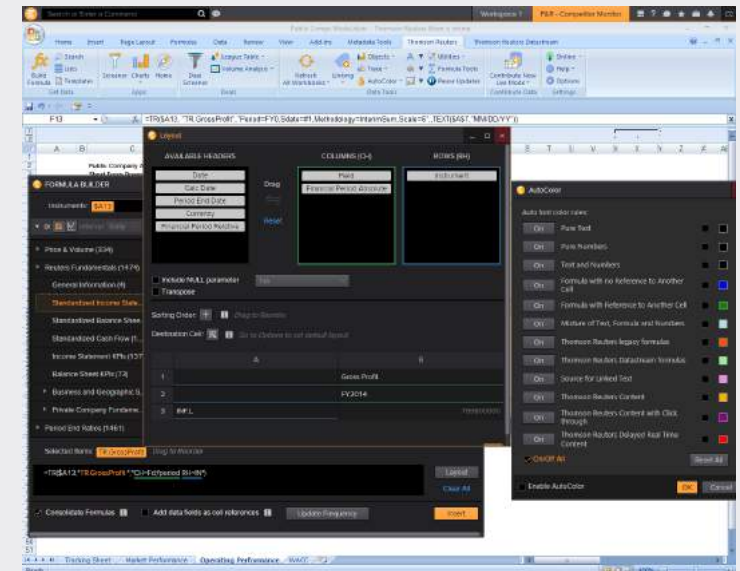
- Designed with rapid retrieval as a key requirement
- Improve productivity with tools to quickly build formulas, create tables, charts and reports with your firm's branding and rapidly refresh with the latest data



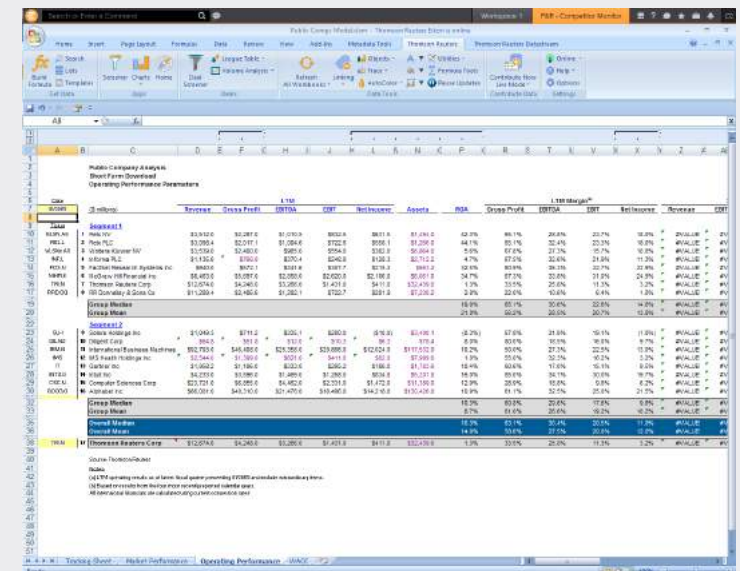
Extensive keyboard shortcut menu



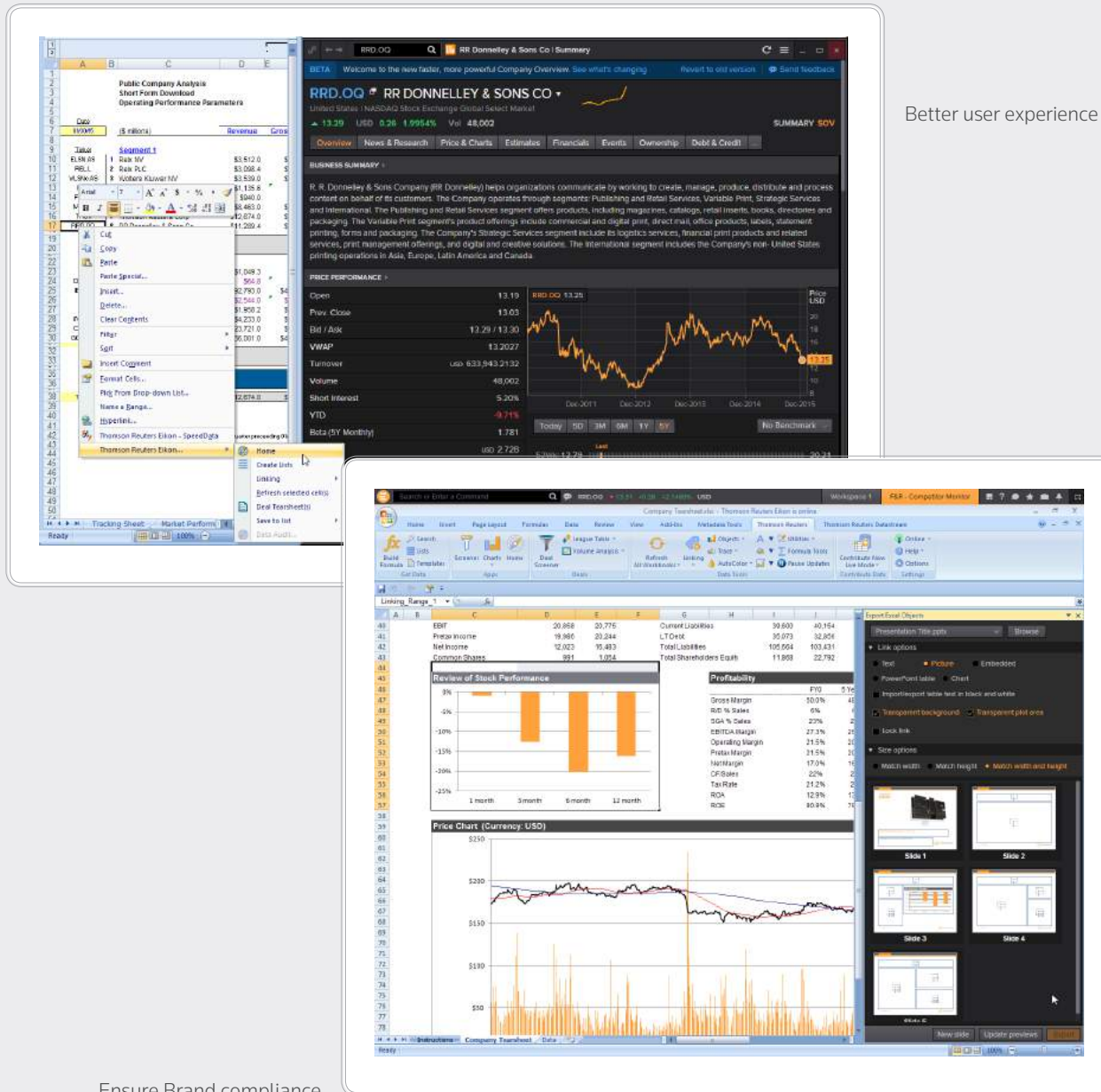
Intuitive search tools



Improve productivity



Update models rapidly



Better user experience

Key Benefits

Better user experience across desktop and Add-In

- Use the same search, screening and formula building tools across the desktop and Add-In for greater efficiency
- Right click from a ticker in Excel to go straight to key company information via the Eikon desktop application

Ensure brand compliance with presentation tools in Microsoft PowerPoint

- All brand compliant objects available to the user in a single place
- Concentrate on the content of the presentation and we take care of the aesthetics
- Link content from Excel into Word and PowerPoint while maintaining a link with the source Excel file

Continual enhancements and easy update process

- Monthly releases with server side updates requiring minimal front end support
- New content and analytics regularly added

Ensure Brand compliance

Features at a Glance

The Thomson Reuters ribbon in Excel after sign-in

Note: This ribbon displays all the apps, including the additional entitlement-based.

Use the **Formula Builder** to create complex data requests with speed and ease.

Screen companies.

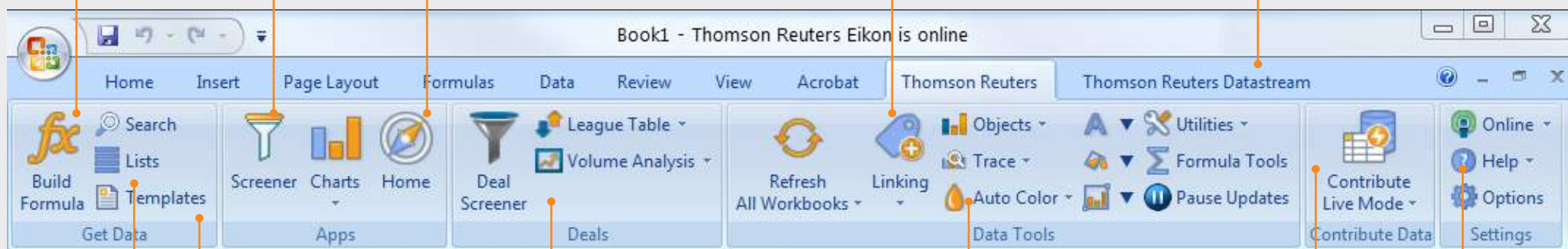
Dig deeper into rich asset-specific content, news, research, estimates, prices, and more.

Enable the **Linking** app to link Excel data and charts to PowerPoint or Word documents.

This is an entitlement-based additional app.

Work with **Datastream** data and charts.

These are entitlement-based additional apps.



Work with **lists** and **portfolios**, even those created in the Desktop.

Use handy asset-specific **templates**.

Monitor **deal** flow, identify trends and gain insight into your competitive positioning with **Deal Analytics**. This is an entitlement-based additional app.

Increase productivity with handy tools like **Auto Color**, **Presentation Tools**, **Formula Tools**, **Shortcuts**, and more...

Contribute data locally or to a network.

View product information, set sign-in preferences, define settings, and enable additional apps.

Check the [FAQs](#) in a browser, or in Eikon Desktop search, type FAQ and view the section on *Thomson Reuters Eikon – Microsoft Office*.

Note: To work with *Deal Analytics*, *Datastream*, *Linking*, and *Presentation Tools*, you must:

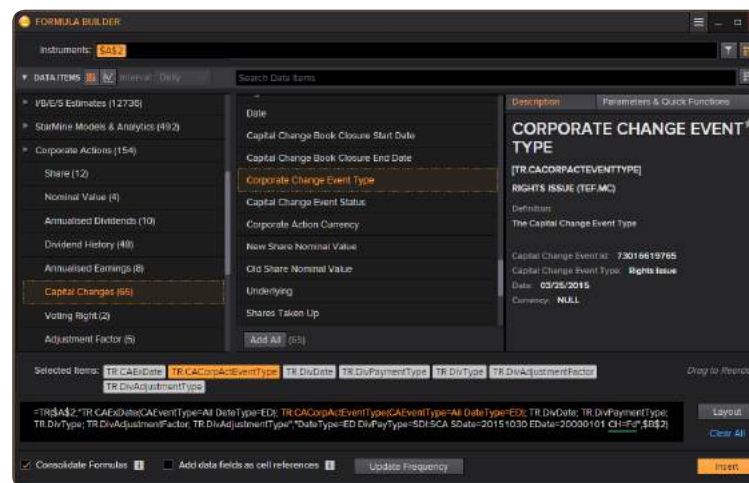
1. be entitled to use the apps.
2. enable the apps via *Options > Apps*. See [Enable Additional Apps in Excel](#).

Key Features

Formula Builder

Access the entire universe of available Thomson Reuters instruments and entities and associated data-items. Format your output how you'd like to maximize your decision-making capabilities through your spreadsheet analyses. Come back and re-hydrate your formulae in Formula Builder to edit and modify your requests over time.

- Easily find instruments using auto-suggest or advanced search
- Browse the entire catalog of data-items using keyword searching
- Build your formulas using data in your spreadsheet using cell-referencing
- Customize your parameters, options to your personal preferences
- Preview your tables and data-item output before you insert into Excel



Screener

Build a screen using any of the available 12,000+ filter criteria, for Public or Private companies. Create sophisticated expressions and criteria to filter your universe. Sort, rank and add additional data-points to your results for deeper analysis.

- Dynamically filter your Public or Private company universe using any of the available filter criteria
- Create complex expressions, using the Expression Builder, to use as a filter
- Sort, add data-items or rank your results to further analyze your results
- Insert your screen and analysis criteria into Excel, either as static values or as a dynamic formula
- Edit your Screen formula using Formula Builder for additional data-items or Layout options

The screenshot shows the 'Excel Screener' window. The top left shows the current screen: 'Increasing FOCF' with 'USD' as the currency. The main area displays a table of companies with columns for Identifier, Company Name, Country of Headquarters, and Free Operating Cash Flow (FOCF). The table is sorted by FOCF in descending order.

Identifier	Company Name	Country of Headquarters	Free Operating Cash Flow (FOCF) (USD)
MGL.PK	Magnolia Solar Corp	United States of America	945,200.00
IMCL.PK	IntermedClr Corp	United States of America	695,666.67
ADRY.PK	Advanced Oxygen Technologies Inc	United States of America	56,825.00
SBDO.PK	Si oogoo Corp	United States of America	56,431.82
NGMG.PK	Next Generation Management Corp	United States of America	55,433.33
ETAL.A	Elephant Talk Communications Corp	United States of America	27,243.62
NTEK.PK	NanoTech Entertainment Inc	United States of America	27,151.67
SPAN.OQ	Span-America Medical Systems Inc	United States of America	26,303.35
SRCE.OQ	1st Source Corp	United States of America	25,994.55
AMAG.OQ	AMAG Pharmaceuticals Inc	United States of America	25,664.42
TRTA	Trio-Tech International	United States of America	23,300.00
LHCG.OQ	LHC Group Inc	United States of America	20,711.71
DGR.H	Digital Realty Trust Inc	United States of America	19,119.52

Key Features

Template Library

The Template Library allows for users to search for and open in Excel Application based templates (which provide a specific workflow) as well as How-To templates which walk the user through a specific function or theme in building out a template. They can be used out of the box to grab critical financial data or used as training guides to learn the product. All of this in a dialog that provides dynamic searching capabilities with clear written and visual descriptions.

- Dynamically search in a flat streamlined dialog which will get the users to a specific template quickly and efficiently
- Clear visual and written descriptions that help identify a templates purpose and walk them through the usage of it
- Application based templates that work out of the box to provide the user key financial data on the fly
- How-To templates that walk the user through a specific theme or workflow, or even a functionality. Used for training purposes to learn the product and start building

The screenshot shows the 'Template Library' window with a search bar at the top. Below the search bar, there are 224 results and suggested tags: 'Single Instrument Studies', 'Time Series', and 'Pricing'. The interface is divided into two main sections: 'CATEGORIES' and 'ASSET CLASSES' on the left, and a list of template cards on the right. Each card includes a thumbnail, a title, a description, and an 'Open' button. Callouts point to the search bar, the category/asset class filters, and the thumbnail view.

Dynamic search bar that allows for free text search of template names and descriptions.

Categories and Asset Class filters are a great starting point for users to begin searching for templates.

Thumbnail view which dynamically updates as a user applies a filter or text in the search bar.

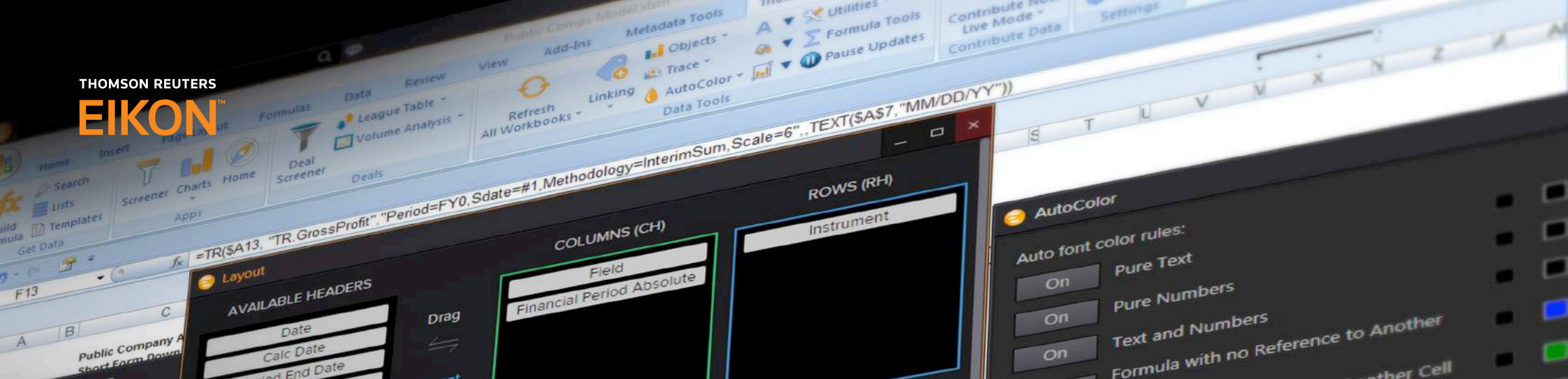
Additional Key Features

An Overview

AUTOSUGGEST powers the entire application. Add input, make selections, and build data requests with ease and speed.

 <p>Rapidly find instruments using the general search, or the advanced asset-specific searches. Help Topic. Training video: browser.</p>	 <p>Contribute data locally within Excel, or to server. Help Topic. Training video: browser.</p>
 <p>Work with lists, indices, and portfolios created in Eikon Desktop and Excel. Help Topic.</p>	 <p>Deal Analytics – an entitlement-based app Monitor deal flow; identify trends, gain insight and spot opportunities. Audit fundamental and estimates data. Help Topic. Training video: browser.</p>
 <p>Reuse asset-specific templates; access, create and share data sheets in a few mouse-clicks. Help Topic.</p>	 <p>Linking – an entitlement-based app Link Excel data and charts to PowerPoint and Word documents. Help Topic.</p>
 <p>Screen companies by universe, filter by qualitative and quantitative data items, and monitor companies in Excel. Help Topic. Training video: browser.</p>	 <p>Datastream & Datastream Charting – entitlement-based apps Comprehensive source for cross-asset analysis for IM professionals. Help Topic.</p>
 <p>Chart data in Excel. Help Topic.</p>	 <p>Presentation Tools – an entitlement-based app Tools to facilitate brand compliant presentations. Help Topic.</p>
 <p>Explore the data further. View rich asset-specific content, news, research, estimates, prices, and more. Help Topic.</p>	 <p>Options View product information, install apps, define data retrieval settings and set sign-in preferences. Help Topic.</p>
 <p>Choose which data to refresh data: all workbooks, workbook, worksheet, selection, or calculator links.</p>	 <p>Trace Trace formula precedents and dependents in a grid or tree view. Help Topic.</p>
 <p>Instantly identify different types of content. Spot delayed real-time data, linked text, formulas with references, etc. Help Topic.</p>	 <p>Utilities Access tools like <i>Shortcuts</i>, Adfin settings and conversion tools for legacy content. Help Topic.</p>
 <p>Modify data display and the update frequency with the handy contextual <i>Formula Tools</i>. Help Topic.</p>	

You are all set! Handy links: [Online Help](#), and [Getting Started](#) video. Tip: Access *OnDemand* videos and *FAQs* via the Eikon Desktop search.



To learn how to use Thomson Reuters Eikon Microsoft Office Add-In, download our [Quick Start Guide](#).

To learn more about how Thomson Reuters Eikon, go to: financial.thomsonreuters.com/eikon

The intelligence, technology and human expertise
you need to find trusted answers.



the answer company™
THOMSON REUTERS®