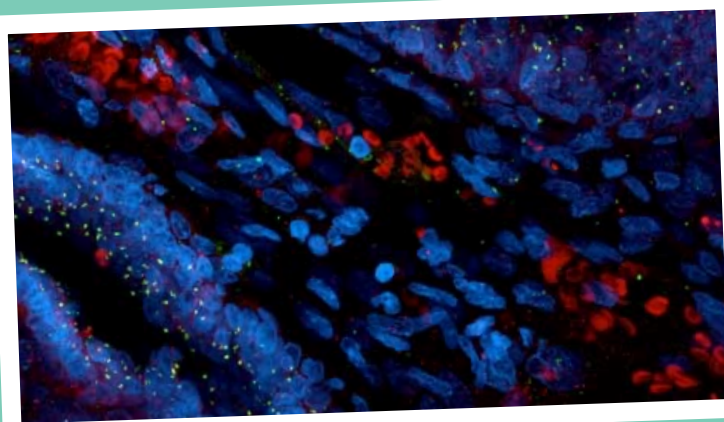


Thank you for supporting cancer research at Warwick

Imagine a future where research transforms how we understand cancer, its diagnosis, treatment and care. Your support is creating life-changing interventions that are changing the way we look at and live with cancer. By giving to Warwick Cancer Research Centre, you are helping researchers discover the best ways of delivering cancer drugs directly to cancer cells and supporting the development of new technologies for diagnosis. Thanks to you, experts can examine the impact of Covid-19 on the development, diagnosis, and treatment of the disease.

Warwick's research strengths in different disciplines, ranging from biomedical research to work in chemistry, engineering, and mathematics, combine to produce world-class research with impact and purpose. For example, using computer science and artificial intelligence to improve cancer detection in biopsies and guide decisions about the best treatment for individual cancer patients.



Ovarian cancer cells as seen under a powerful microscope. Credit: Carolin Sauer.

'Your support for researchers taking an interdisciplinary and collaborative approach brings unique perspectives and expertise to the fight against cancer.'

Professor Lawrence Young
Director, Warwick Cancer Research Centre

Combatting Covid and conquering cancer

Research has continued throughout the global pandemic, contributing to both fighting Covid and cancer. Current Covid-19 therapy discovery and development has specifically supported the Covid crisis effort whilst contributing to the effective detection, treatment, and longer-term cures for many different types of cancer. New ways to detect and diagnose cancer are being developed, such as technologies identifying markers in the blood that can be used to diagnose and monitor the response of patients to cancer therapy. Other technologies are using computer science and artificial intelligence to screen cancers such as breast cancer to improve the screening process and better identify accurate outcomes.

Researcher profile: Professor Lawrence Young

About me: I'm Professor of Molecular Oncology and Director of Warwick Cancer Research Centre.

Research interests: Identifying markers in the blood that can diagnose and monitor patients' responses to cancer therapy and exploring the link between infection and cancer. A recent project looks at links between cancer and the Epstein Barr Virus, which causes glandular fever, to examine the virus's effect on Covid-19. This research could improve outcomes for both cancer patients and patients affected with long Covid.

What giving means to me: Your support means research can progress more quickly and with expanded scope. Philanthropy enables research to move from laboratory bench to bedside, making a difference to the diagnosis, treatment and care of patients with cancer.

You, and donors like you, are funding everything from essential laboratory equipment to additional researchers to expand our team. I personally, along with all my colleagues in our Cancer Centre, am extremely grateful for your generosity.



Donor profile - Caroline Bainbridge (BA English and European Literature, 1973-76)



Caroline on her wedding day.

Her husband, Michael, wishes to continue her legacy and support the development of life-changing cancer treatments.

About Caroline: Caroline's English degree at Warwick was the first of three degrees she achieved. Sadly, she passed away due to cancer in 2020. She is pictured on her Wedding Day in May 2020, her makeup and curly hair, woven with gypsophila, done by hospice nurses, and wearing a beautiful opal and diamond necklace. This was her something old, something new, borrowed, and something blue.

What giving meant to Caroline: Caroline was a supporter of Warwick Cancer Research Centre because she wanted to focus on giving which directly benefitted research. Her husband, Michael Harris, now continues this work and her legacy, enabling better treatment and diagnoses so that more cancer patients have the opportunities to overcome this complex disease.

Michael says: "I wish to support cancer research, which is very close to my heart. Caroline had a sudden diagnosis of primary lung, secondary brain, liver, and lymph gland cancers at a stage when there was no treatment possible. It's my wish, and she would have agreed with me, to support smaller organisations where more direct benefit can happen. I'm very pleased to be able to continue her previous support."

You are making a difference to the future of cancer research

Caroline's legacy reminds us that there's much more work to do in the fight against a disease that will affect one in two of us in our lifetimes. Your support is bringing treatments and cures closer to those who need them the most.

Your donations help directly fund research ranging from large observational studies and trials to using new technologies in the detection and treatment of cancer. You are making a real difference to cancer patients and their families for generations to come. Thank you.

Scan the QR code to learn more about cancer research at Warwick.

