

Air Pollution Outside Schools

WARWICK
THE UNIVERSITY OF WARWICK

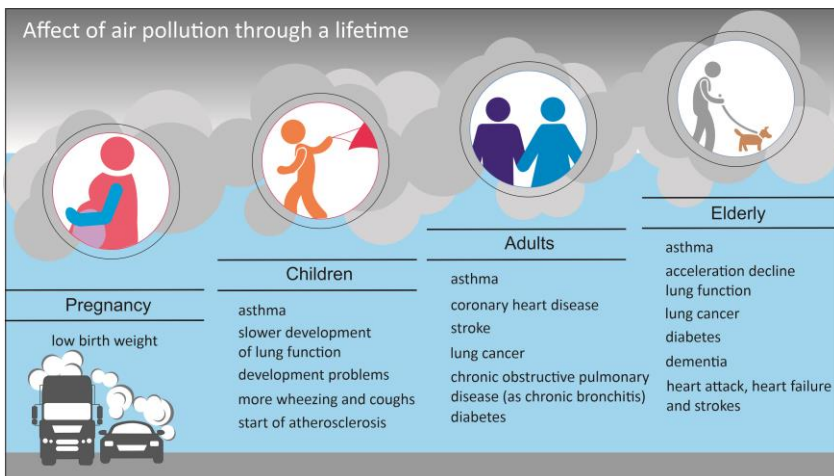
A FRESH Approach

Air pollution is an odourless, silent and colourless poison that **impacts life at all stages.**

Sources include:

- Transport
- Industry
- Agriculture
- Energy
- Waste management

It leads to an extra **7 million premature deaths each year.**



Key pollutants

Particulate Matter (PM2.5)

Nitrogen dioxide (NO₂)

Nitric Oxide (NO)

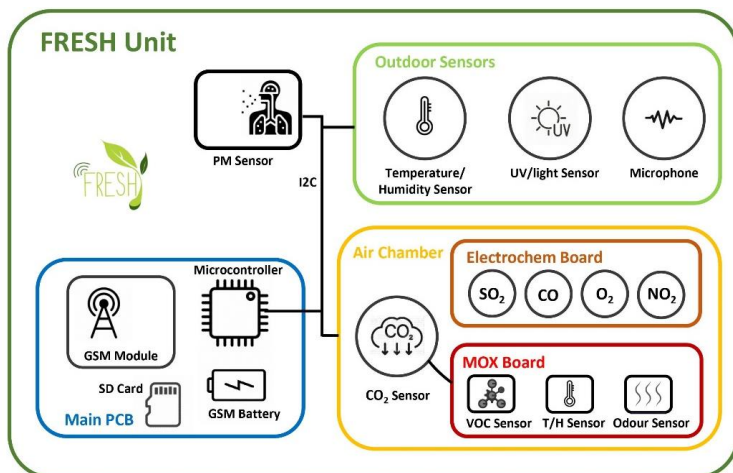
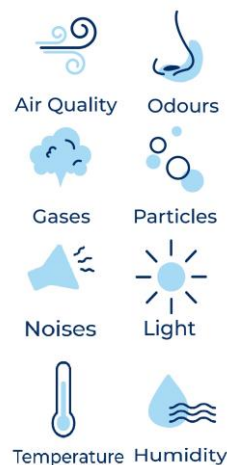
Sulphur dioxide (SO₂)

Volatile Organic Compounds

The **FRESH system** was developed at the University of Warwick to help understand the environment around us:

- Measurement of air main pollutants
- Environmental conditions
- Fully portable
- Battery powered
- Simple to install & use
- Records/transmits data

It can be used to monitor **air quality around schools** to inform and change behaviour.



The FRESH system



Prof. James Covington
BioMedical Sensors Laboratory
School of Engineering, University of Warwick
Email: j.a.covington@warwick.ac.uk

Supported by the
Health GRP

