

Working with the Arts and Cultural Sector

Creative Practitioners



Image Credit: George Blower

Creative practitioners could include creators such as visual artists, theatre makers, filmmakers, sound artists, dancers, writers and many more. They can range in size from individual artists to national, or even international, organisations. Researchers in the Arts often work with these creative practitioners to inspire and inform artistic work, to reach new audiences and to provide other forms of support.

Practitioners could be involved at any stage of a research project. In some cases, they may be involved in co-creating research alongside academics, while in other they may benefit from the research once it has been conducted.

In some cases academics will commission artists to work on a particular project. If this is something that you would like to do as part of a research project you could build the cost into a funding application.

Impact could include:

- Impact on creative practice and professional development;
- Research underpinning the creation of new artworks;
- Increased revenues;
- Reaching new audiences (both for your research and/or for the artistic work);
- Using art and creative practice to educate, to deliver a particular message or encourage behaviour change.

Examples

Using Research to Inspire Practice or Artworks

Hilary Marland (Department of History) [worked with theatre groups](#), including Talking Birds, Geese Theatre Company, Rideout and Fuel Theatre to create performances based on her

team's research into mental health in prisons to raise public awareness and work with prisoners.

James Hodgkinson (SMLC) [worked with local artists](#) Mohammed Ali and Mohsen Keiany who created new artworks including a video of testimony and a new painting, both based on his research into perceptions of Islam in Western societies. James has continued to work with [Soul City Arts Birmingham](#) on SCA's place-based research programme which comprised two events (South-Asian Film Festival and Global Dining Exchange) run during spring and summer 2024 from their Port-Hope base in Sparkhill, Birmingham.

Coventry Creates

We also have the Coventry Creates Exhibition, where 18 local artists worked with researchers from the University of Warwick and Coventry University resulting in a wide range of innovative artworks presented through a digital exhibition. [Coventry Creates \(warwick.ac.uk\)](#) for more information and links to the exhibition [coventrycreates.co.uk](#).

COVENTRY CREATES — PROJECT INDEX

All projects 2020 2021

2021
FURNITURE OF MY IMAGINATION
What can pre-modern experiences of solitude tell us about what it means to be alone?
(R) Naomi Pullin

2021
IMAGINE EQUALITY, CREATE CHANGE
How do women of colour envision an equal society and how can desired change be created?
(R) Khursheed Wadia
(A) Sherrie Edgar

2021
THRESHOLDS
What is it like being a healthcare worker in a pandemic?

2021
PARCHMENT SCAI PEI ROCK

2-minute promo video for the Coventry Creates Exhibition - <https://youtu.be/bX80I6KfxUs>

There are other examples of artist-researcher collaborations available here - [Artist-Researcher Collaborations \(warwick.ac.uk\)](#). We also have a [brochure of over 100 examples](#) of creative projects, working with local artists etc., and community, third sector and public sector organisations.

Research

Research Culture - | REF 2021 | Research Facilities | Impact - | Partners - | Supporting Talent - | Virtual Bookcase - | Knowledge Exchange -

Place-based Research ▶ Artist-Researcher Collaborations



Coventry Biennial

Warwick has been collaborating with the Coventry Biennial since its second iteration in 2019, with artists responding to a variety of Warwick research and Warwick researchers participating in various events.



Belgrade Theatre Project

Working with the Belgrade Theatre, Professor Jacqueline Hodgson and Dr Rachel Lewis will see their research into policing and community translated into a performance piece, exploring the power of arts and culture as a collaborative endeavour.



Coventry Creates

For Coventry Creates, 18 local artists worked with researchers from the University of Warwick and Coventry University resulting in a wide range of innovative artworks presented through a digital exhibition.



Artist-Researcher Collaborations with Coventry Creates:
sharing knowledge and inspiring innovation

Artists & Researchers: Why Collaborate?

To evaluate the success of artist-researcher collaboration on artist participants, a series of interviews were carried out. Feedback forms were gathered from all artists and researchers, providing additional insights into participants' experiences of Coventry Creates.

A knowledge sharing document was also created based on the evaluation of artist-research collaborations together with a roundtable discussion.

These documents share learning from Coventry Creates, including its benefits and challenges, alongside four case studies to illustrate the experiences of artists and researchers working together for the first time. In setting out our findings, as well as lessons going forward for similar projects, we hope to help promote future successful artist-researcher collaborations - not just around City of Culture, but in all aspects of academic work.

Evaluation of Coventry Creates

We also have guidance, informed by research and interviews with researchers and artists who have worked together, in written and video form.

Artist's Perspectives



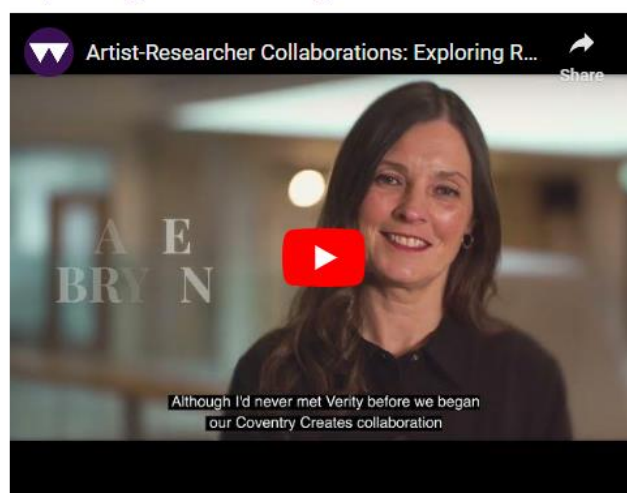
'Artist Perspectives' – 3-minute video – https://youtu.be/UUiRoRm_dM

'Exploring Research together' – 3-minute video – <https://youtu.be/11y13fdQrlc>

[Artist-Researcher Collaborations with Coventry Creates: Sharing Knowledge and inspiring innovation](#)

[Coventry Creates Brochure](#)

Exploring Research Together



Coventry Biennial

Warwick has been collaborating with the Coventry Biennial since its second iteration in 2019, with artists responding to a variety of Warwick research and Warwick researchers participating in various events.

Coventry Biennial 2023

Following successful partnerships in 2019 and 2021, The University of Warwick co-funded (with Warwick Institute of Engagement and Sustainable Cities GRP) a significant and exciting exhibition, bringing together University research and contemporary art, together with local communities, to be a major part of the [Coventry Biennial 2023](#), with Warwick becoming one of the major sponsors of the Biennial.

Professor Graeme Macdonald (English and Comparative Studies) collaborated with a Biennial artist to create a research informed flagship exhibition for CB2023. [Find out more.](#)

How was Warwick involved?

The University of Warwick researchers have partnered with the Biennial in a number of ways. The University has supported the creation exhibitions with Warwick researchers having been involved in associated events. Discover the [previous Warwick projects here.](#)

For more information, please visit our webpages. [Coventry Biennial | Artist-Researcher Collaborations \(warwick.ac.uk\)](#)

Policy Impact

Jackie Hodgson (Law) and Rachel Lewis (Law/Sociology) have an ongoing (as of July 2024) project [‘Policing, Culture and Community’](#) working with the Belgrade Theatre and various creatives. Over time this project has resulted in various creative outputs including a play [‘After Preston’](#),

Images from the production (photographer Nicola Young).



The project team is currently working to develop training workshops for West Midlands Police, related to the Police Race Action Plan and influence policy.

Informing practice

Nadine Holdsworth (Theatre and Performance Studies) [conducted a research project with the Royal Navy Theatre Association](#), which examined the history of amateur performance in the Navy, giving the association a stronger understanding of their traditions.

Carol Rutter (English and Comparative Literary Studies) [has acted as an academic advisor](#) to a number of productions, including performances by the RSC, advising directors and actors.

Reaching and educating new audiences

The team behind [‘The Projection Project’](#) (Charlotte Brunsden, Jon Burrows, Michael Piggott and Rick Wallace, all from Film and Television Studies) worked with photographer Richard Nicholson to document the remaining cinemas that project film, creating a visual archive.

Steve Purcell’s (English and Comparative Literary Studies) [research on Shakespeare and performance](#) has underpinned the practice of the Pantaloons Theatre Company, of which Purcell is an Artistic Director, bringing Shakespearean plays to open air and community venues.

[Kevin Moffat](#) (Life Sciences) undertakes a lot of work with creatives from poets, to dance and theatre.

Building or supporting networks of practitioners

Yvette Hutchison (Theatre and Performance Studies) [founded the African Women Playwright’s Network](#), bringing together female playwrights from across Africa.

The Warwick Writing Programme (School of Creative Arts, Performance and Visual Cultures) [launched the Women in Translation Prize](#) to address the gender imbalance in translated literature.

Warwick Institute of Engagement

Via the Co-Creation and Collaboration Fund the WIE has supported many projects that include the arts and cultural sector, you can browse brief information on 36 diverse projects that span all Faculties on their webpages. [Awarded Projects \(warwick.ac.uk\)](#)

Venues

Coventry Venues and Companies

(this is a list of artistic production companies and venues in the local area which have worked with Warwick academics):

- [Belgrade Theatre](#)
- [Shop Front Theatre](#)
- [Theatre Absolute](#)
- [EGO Performance Company](#)
- [Talking Birds Performance Company](#)
- [Warwick Arts Centre](#)

Coventry City Council have a [directory](#) of some of the theatres and companies in the city.

Theatres and Theatre Companies

- [Database of Theatres](#) (also useful if you are looking for a location to host an event)
- [List of some English theatre companies](#)

Cinemas

[Database of cinemas](#) (page maintained by [Cinema Theatre Association](#))

Museums, Galleries and Heritage Organisations

Museums, galleries and heritage organisations preserve and make accessible to the public a broad range of artworks, objects and buildings. These organisations often work with academics to access research that will inform their own practice, develop new avenues of exploration and improve visitor information and experience.

In some cases, organisations will approach academics to request their expertise on a particular project or questions. If you have an idea of a collaboration you can also reach out to them to discuss whether they would be interested.



These kinds of cultural organisations are likely to have their own strategies and goals, and it can be helpful to think about how your research can link to these when you are proposing a joint project. It may be useful to think about whether there are key events coming up, for example anniversaries of birth or deaths, that your research would tie in with, or whether your research can support an organisation to speak to contemporary concerns. These organisations often plan programming a year or more in advance, so it is important to consider this when suggesting a collaboration.

Creating Impact

Impact could include:

- Informing organisations about collections and their conservation or restoration
- Creating educational resources for children and young people
- Informing visitor materials such as books, catalogues, and object labels, and holding events such as talks and workshops.
- Attracting new visitors and/or increasing visitor numbers.
- Development of new exhibitions or collections

Examples

Co-Curating Exhibitions

Helen Wheatley and Rachel Moseley (Film and Television Studies) [co-curated an exhibition](#) with the Herbert Gallery in Coventry, using their expertise in children's television to curate a collection of objects such as models, puppets and memorabilia from popular television shows.

Rob Fletcher (Department of History), together with Greg McInerny (Centre for Interdisciplinary Methodologies), Katherine Brown (University of Portsmouth) and Amanda Thompson (Glasgow School of Art) [curated an exhibition at the National Museum of](#)

[Wales](#) on their interdisciplinary research into the efforts of the British Empire's Anti-Locust Research Centre (ALRC) to eradicate the threat of locusts.

Informing practice and understanding

Kate Astbury (SMLC) [provided Portchester Castle](#) (an English Heritage site) with expert advice on recreating a Napoleonic prisoner-of-war theatre that had previously existed in the castle's keep, as well as contributing to visitor information materials.

Alison Cooley (Classics) [enhanced the Ashmolean Museum's Latin Inscriptions](#) by creating a new open-access catalogue of Latin inscriptions held by the museum, which enhanced the museum's understanding of their own collection and resulted in a marked increase in the number of inscriptions on display in the Ashmolean.

Developing Education Programmes

In addition to her work cataloguing inscriptions (see section above), Alison Cooley and her team developed a set of educational resources for the Ashmolean to use, including This included a 'legacy box' of resources and replicas, and a Latin Language Adventure programme for school visits.

David Lambert and Tim Lockley created a freely-available [online educational resource](#), hosted on the British Library's website, to complement an exhibition they co-curated on the history of the West India Regiments (WIRs).

UK Heritage organisations:

[English Heritage](#)

[National Trust](#)

[Heritage Gateway](#)

[Historic England](#)

Museums and Galleries:

Art Fund List of Museums and Galleries in the UK: <https://www.artfund.org/whats-on/museums-and-galleries>

Which Museums: Find museums in the UK and Europe: <https://whichmuseum.co.uk/>