

MAKE THE MOST OF YOUR STAY

Things to do when visiting Warwick Conferences




WARWICK
CONFERENCES



WARWICK SPORTS & WELLNESS HUB

[!\[\]\(0f848bbd71cef6b345273b16f905912a_img.jpg\) Find out more.](#)

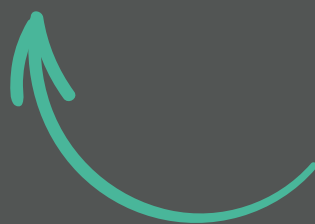
Brand new sports hub. 5 minutes' walk from Scarman and Radcliffe and 20 minutes' walk from Central Campus Venues. Residential guests enjoy complimentary access to the pool and gym.



WARWICK ARTS CENTRE

[!\[\]\(6a9b39b98eb945faa14c645ec99e4eaa_img.jpg\) Find out more.](#)

A place where we can all meet, 3 brand new cinemas showing the latest film releases. Located just a 5 minutes' walk from Scarman and Radcliffe and just metres away from Central Campus Venues.



MEAD GALLERY (DURING TERM TIME)

📍 [Find out more.](#)

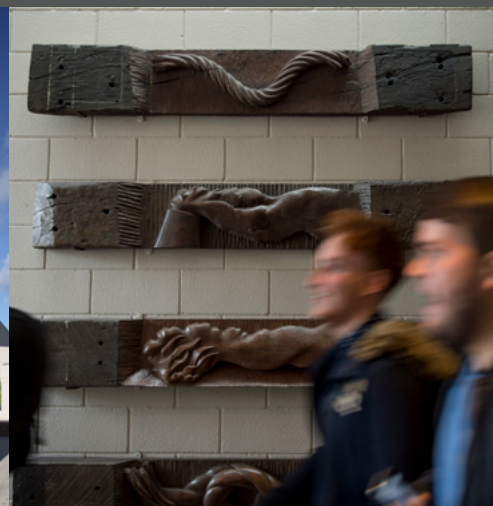
Located in Warwick Arts Centre, the Mead Gallery is one of the most distinctive exhibition spaces in the UK.



WARWICK SCULPTURE TRAIL

📍 [Find out more.](#)

A self-guided walk around the outdoor artwork on campus. We have many sculptures spread out across the University.

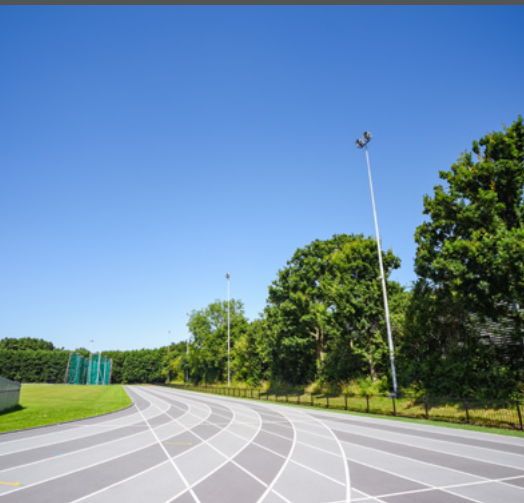




CAMPUS WALKS

[!\[\]\(e78f798d4ea5c530c9db49e7d26e6b95_img.jpg\) Find out more.](#)

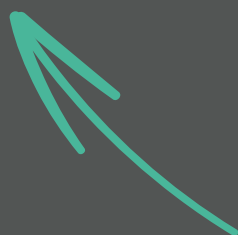
Our campus is home to several short walks and green spaces. Why not explore some of our natural areas and improve your wellbeing at the same time?



RUNNING ROUTES

[!\[\]\(758ebdf4629c903da74c2e079717ae32_img.jpg\) Find out more.](#)

Get your feet out and about and run, jog or walk at your speed with a like-minded community of movers.



CENTRAL LOCATION

Why not book an additional nights' stay with us and take in some of the local areas.



Kenilworth - 3 miles

Coventry train station - 3.6 miles

Coventry - 4.1 miles

Leamington Spa - 8.8 miles

The NEC Birmingham - 10 miles

Birmingham airport - 11.1 miles

Birmingham - 22.5 miles