

6m Printing – Personal Laptops Open Suse Linux



How do I install Kyocera on Open Suse – Linux?

Note: You will be asked for your IT Services username and password throughout the guide.

If you require a password reset please call the IT Services Helpdesk on 024 7657 3737 or visit the IT Helpdesk Drop in centre in the library and we will set a new password for you.

Before you install the Kyocera print queue, you will need to download the drivers – click the link below, which will download them:

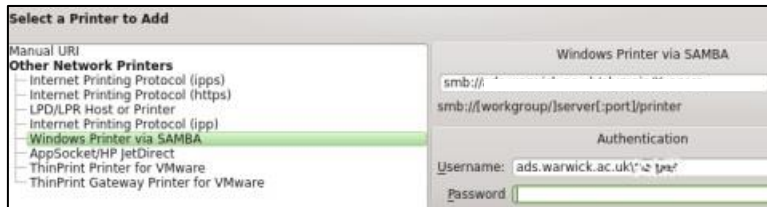
https://warwick.ac.uk/services/its/service-support/printing/unixprinting/Linux_8.1605_TA...5052_6052ci.zip

Linux			
Linux PPDs	8.4	1.18 MB	Linux_PPDs_TASKalfa3050.zip

Configure desktop



When you have downloaded the drivers open **Configure Desktop**. Click on **Printers** and **Add**.



The Network Printer options will load, select **Windows Printer via SAMBA**

Enter the following **smb://(server).ads.warwick.ac.uk/Kyocera**

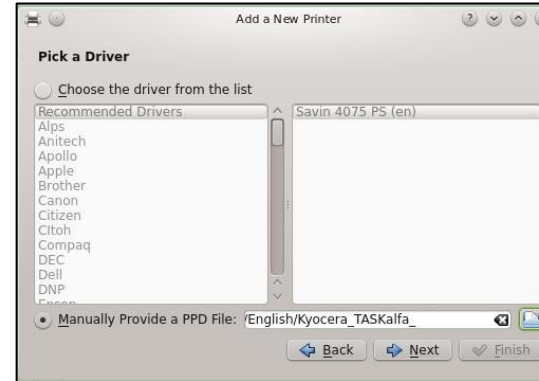
You will need to replace **(server)** with either **Foster** or **Hopkins**.

Enter your username and password

Username: **ads.warwick.ac.uk\username**

Enter your IT Services password and click **Next**.

Pick a driver



On the **Choose Driver** page, select the option called **Provide PPD file** and then browse to the driver file you downloaded previously.

Select **Kyocera_TASKalfa_6052ci.PPD**
Click **Next**



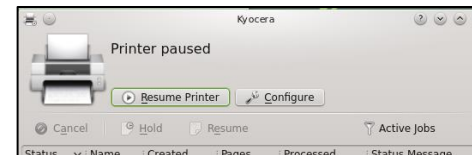
On the following screen, type a name, description and location.

Untick **Share this printer**

Click **Finish** to finish the installation.



Untick **Reject print jobs** on the final screen and press **Open Print Queue**



Click **Resume Printer**.

Note: The network protocol SMB1 has recently been disabled. For more information see <https://warwick.ac.uk/services/its/service-support/printing/manageddeptprinting/faq/smbv1>

If you find you are not able to print, please contact IT Services on 024 765 73737.



6m Printing – Personal Laptops Open Suse Linux



How do I install Kyocera on Open Suse – Linux?

Note: You will be asked for your IT Services username and password throughout the guide.

If you require a password reset please call the IT Services Helpdesk on 024 7657 3737 or visit the IT Helpdesk Drop in centre in the library and we will set a new password for you.

Before you install the Kyocera print queue, you will need to download the drivers – click the link below, which will download them:

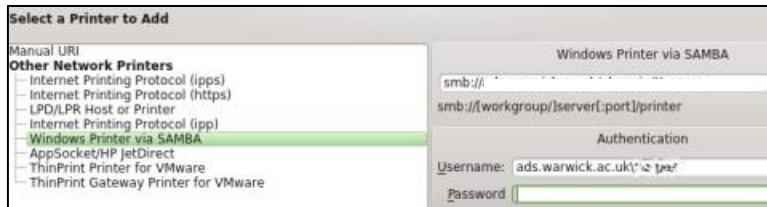
https://warwick.ac.uk/services/its/servicessupport/printing/unixprinting/Linux_8.1605_TA...5052_6052ci.zip

Linux			
Linux PPDs	8.4	1.18 MB	Linux_PPDs_TASKalfa3050.zip

Configure desktop



When you have downloaded the drivers open **Configure Desktop**.
Click on **Printers** and **Add**.



The Network Printer options will load, select **Windows Printer via SAMBA**

Enter the following **smb://(server).ads.warwick.ac.uk/Kyocera**

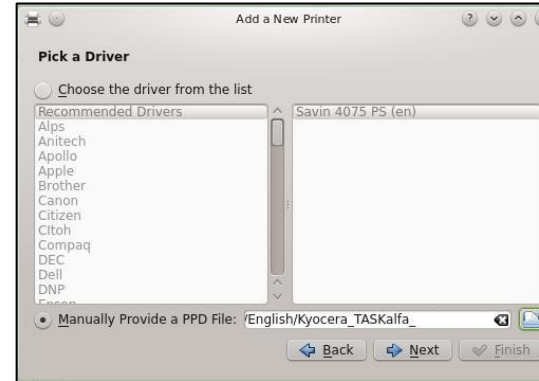
You will need to replace **(server)** with either **Foster** or **Hopkins**.

Enter your username and password

Username: **ads.warwick.ac.uk**(username)

Enter your IT Services password and click **Next**.

Pick a driver



On the **Choose Driver** page, select the option called **Provide PPD file** and then browse to the driver file you downloaded previously.

Select **Kyocera_TASKalfa_6052ci.PPD**
Click **Next**



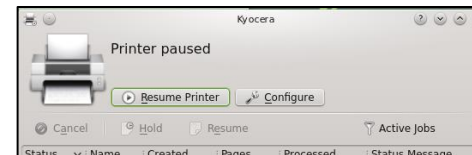
On the following screen, type a name, description and location.

Untick **Share this printer**

Click **Finish** to finish the installation.



Untick **Reject print jobs** on the final screen and press **Open Print Queue**



Click **Resume Printer**.

Note: The network protocol SMB1 has recently been disabled. For more information see <https://warwick.ac.uk/services/its/servicessupport/printing/manageddeptprinting/faq/smbv1>

If you find you are not able to print, please contact IT Services on 024 765 73737.

