


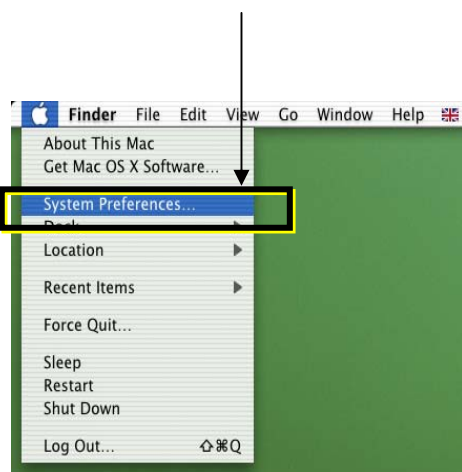
1. Network Setup

The network installed into the residences at Warwick is an Ethernet switched LAN operating at 10Mb and 100Mb. To connect to it, you will need a computer and an Ethernet network card. The majority of newer Apple Mac's will have built-in Ethernet cards but it is advisable to check before hand.

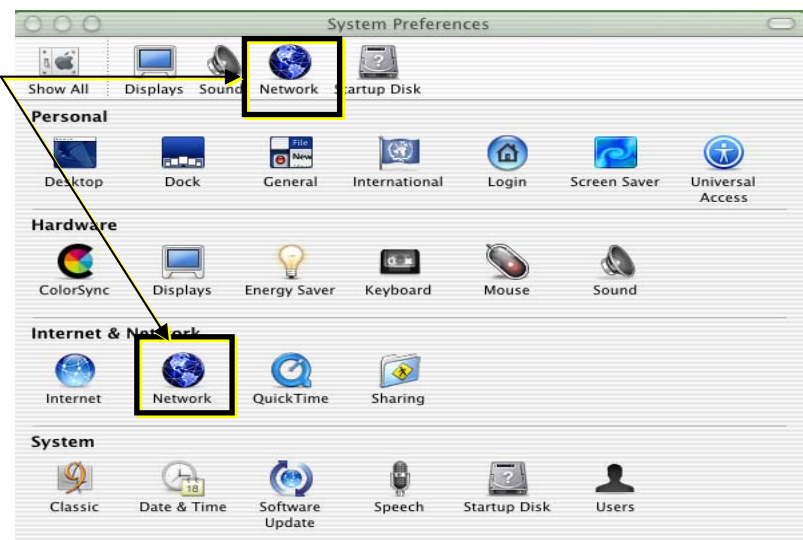
The following instructions should guide you through configuration of your Mac O/S 10



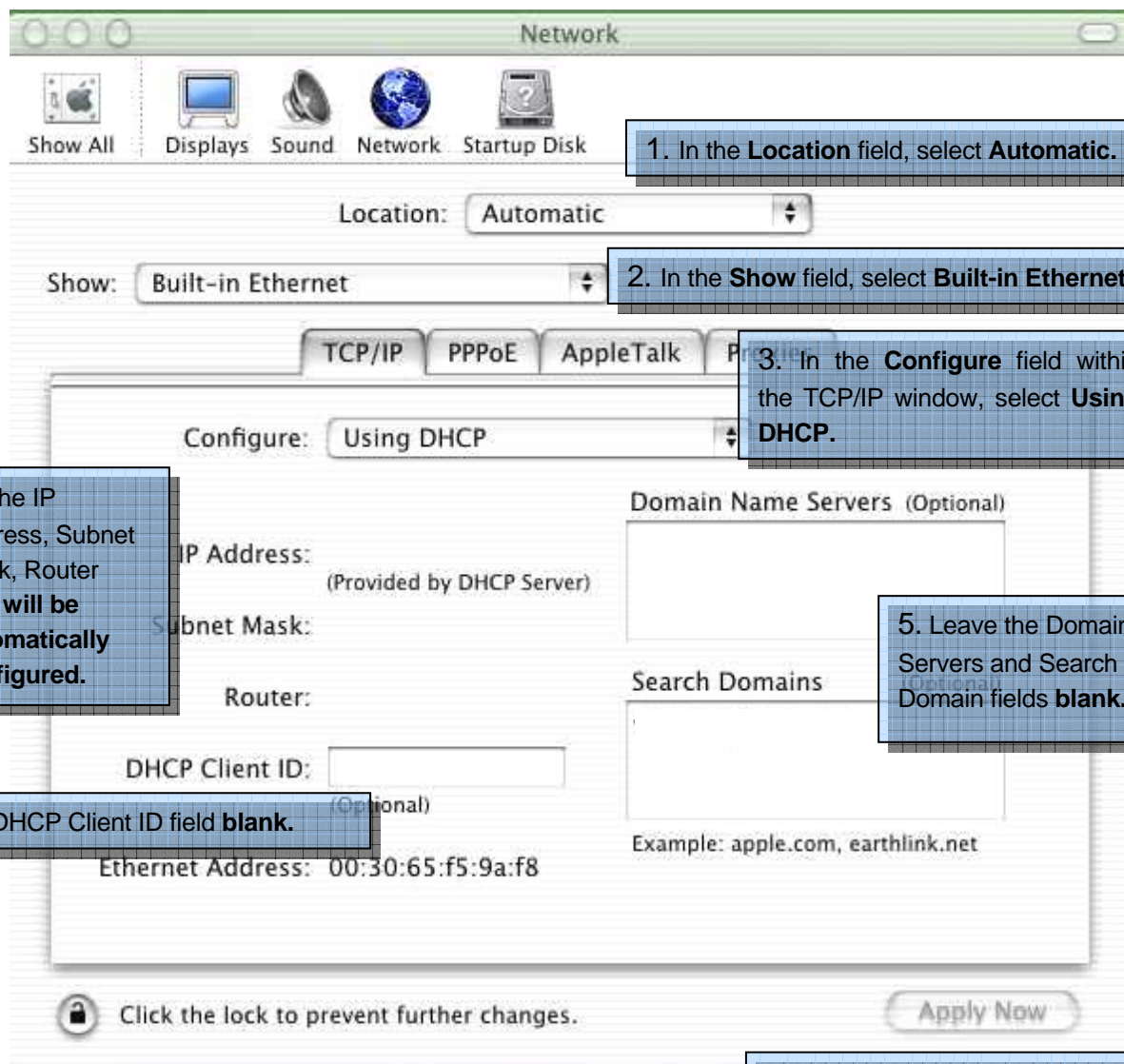
Select the **System Preferences** button on the dock or go to the Apple Menu icon,  then press **System Preferences** as shown below.



2. Select the **Network** button



3.



The screenshot shows the 'Network' system preference window. At the top, there are icons for 'Show All', 'Displays', 'Sound', 'Network', and 'Startup Disk'. The 'Location' dropdown is set to 'Automatic'. The 'Show' dropdown is set to 'Built-in Ethernet'. The 'Configure' dropdown is set to 'Using DHCP'. Below this, there are tabs for 'TCP/IP', 'PPPoE', 'AppleTalk', and 'Printer'. The 'TCP/IP' tab is active, showing fields for 'IP Address', 'Subnet Mask', and 'Router', all of which are empty and have '(Provided by DHCP Server)' written below them. To the right, there is a 'Domain Name Servers (Optional)' section with a 'Search Domains' field, which is also empty. Below this, there is a 'DHCP Client ID' field, which is empty and has '(Optional)' written below it. At the bottom, there is an 'Ethernet Address' field with the value '00:30:65:f5:9a:f8'. A lock icon is visible in the bottom left corner, and an 'Apply Now' button is in the bottom right corner.

1. In the **Location** field, select **Automatic**.

2. In the **Show** field, select **Built-in Ethernet**.

3. In the **Configure** field within the TCP/IP window, select **Using DHCP**.

4. The IP Address, Subnet Mask, Router field **will be automatically configured**.

5. Leave the Domain Name Servers and Search Domain fields **blank**.

6. Leave the DHCP Client ID field **blank**.

7. Click **Apply Now** to save the configuration.

2. How to check Internet Explorer settings

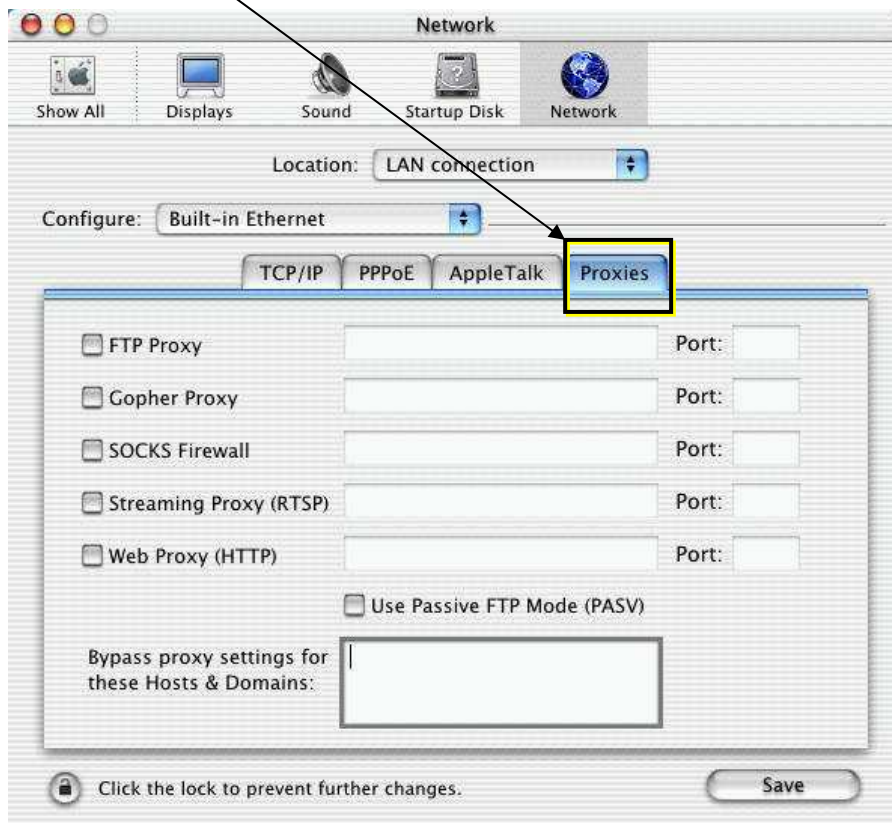
There are two places to check Proxy Settings. The first place is in the Network settings:

- Choose **System Preferences** from the Apple menu.

- Click on the **Network** icon.



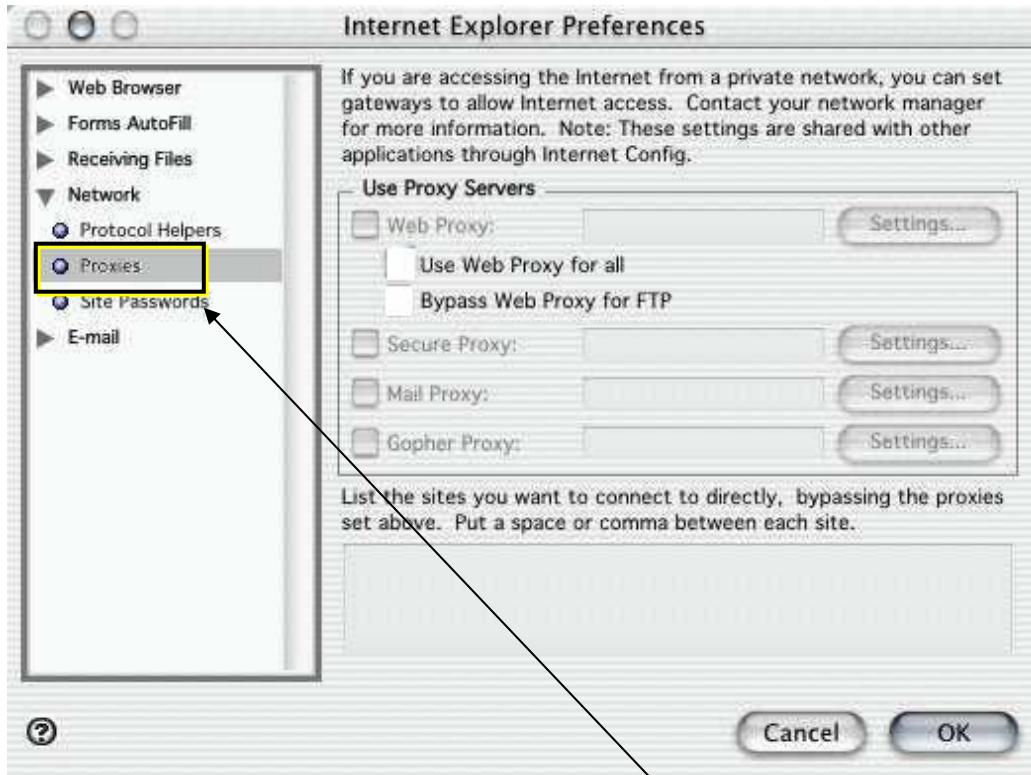
- Click on the **Proxies** tab.



- Make sure all boxes in here are blank
- Then click on the **Save** button.

The Second place to check is in Internet Explorer preferences.

- Goto the Internet Explorer menu, then **Preferences**.



- Click the **Networks** tab on the right, then on **Proxies**
- Make sure everything in here is blank and there are no ticks in any of the boxes.
- Click the **OK** button
- You should now be able to browse the Internet.