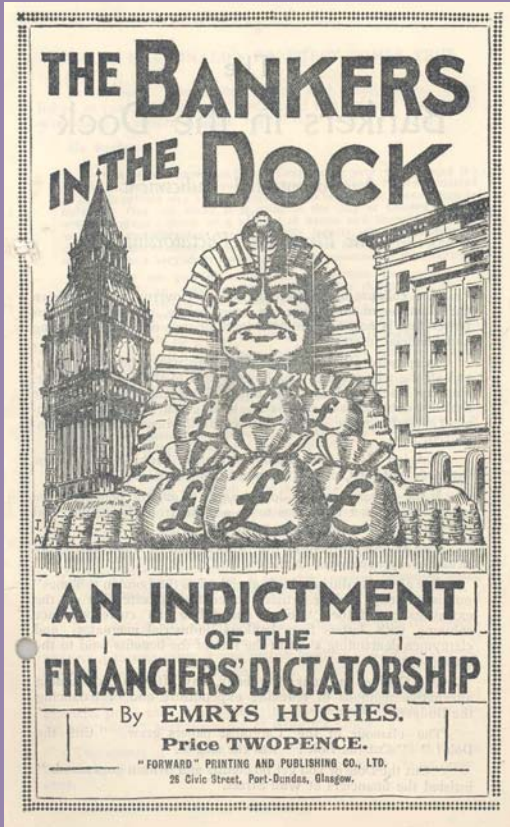




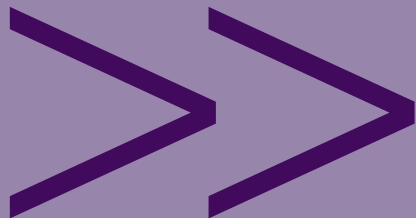
Jack Jones,
1913 – 2009

Annual Report 2008-2009



(MSS.127/NU/5/1/48)
*'The bankers in the dock:
An indictment of the
financiers' dictatorship',
by Emrys Hughes, c1932*

Front cover: Jack Jones. (MSS.625/40/14)



Introduction

The academic year 2008-2009 has proved busier than usual, with increases in all activities from the number of accessions and items catalogued through to the number of visitors and documents produced.

The work has been particularly busy in the area of internet access and promotion of collections – several new subject guides were added, catalogues and lists increased and made more accessible and on-line exhibitions and resources considerably expanded.

The foundations have been laid for the Modern Records Centre to improve its profile and research support activities and the plan is to increase facilities and provide a more dynamic and connected Centre with improved links to the Library's Teaching Grid, Research Exchange and other services.

This year has also seen some significant events such as the death of Jack Jones, trade union leader and a former member of the Centre's Advisory Board. This and other milestones - the US presidential elections in 2008 and the world financial crisis - have been marked by the Centre with exhibitions which can be seen on the Centre's website.

Cataloguing

The Centre continues to add to the catalogues and subject guides available for on-line searching. This year we have added a further 170 collections to the database comprising 37,000 items. The total database now contains over 182,000 items. Key additions this year include the brewery industry archives, iron and steel industry records and the records of the civil service unions.



Cheers!

The extensive archive of the British Beer and Pub Association is contained in over 400 boxes and spans nearly two centuries – from the formation of the Country Brewers' Society in 1822 to the centenary of the BBPA (formerly the Brewers' Society) in 2004.

As well as the standard administrative and financial records, the BBPA archive also contains examples of advertising material from the 1920s to the 1960s, together with an extensive series of subject files covering issues such as taxation, defence of the tied house system, involvement in Europe, exports, legislation, retail, state ownership, social problems, and production and supply during the Second World War.

It includes the Country Brewers' Society, the Kent Brewers' Union and the National Trade Defence Association: formed by representatives of the liquor trade in Britain and Ireland to combat Parliamentary opposition, teetotalism, Sunday closing and the confiscation of licenses without compensation.

There are examples of advertising material, anti-prohibition propaganda, and documents regarding concerns over the effects of alcohol on health and social behaviour.

The archive was catalogued by Liz Wood, who also prepared a subject guide to the brewers' organisations which has been added to the website. This provides an overview of the main parts of the collection and useful links to other sources of information.

Iron and Steel

Major sources for the history of the British iron and steel industry were made fully accessible by Martin Sanders with the cataloguing of the archives (totalling 2,389 separate items) deposited at the Centre by British Steel plc (now Corus). They consist of the records of some 36 employers' associations, negotiating bodies and businesses involved in the industry from the 1860s to the 1980s. The largest of these archives is that of the British Iron and Steel Federation (BISF), which between 1934 and 1967 was concerned with strategic planning and the industry's relationship with government. The BISF archive is a particularly good source for the development of the industry during

and immediately after World War II, including its reaction to the formation of the European Coal and Steel Community. The deposits also include records of the nationalised British Steel Corporation, the Iron and Steel Trades Employers' Association and several other regional or sectional employers' and trade bodies.

The completion of these catalogues led to a visit to the Centre by Dr Joan Heggie and Mr Simon Sheppard of the British Steel Archive Project based at Teesside Archives. We hope in the future to use our respective cataloguing systems to draw researchers' attention to the links between our collections.



(690/PH/1/1) Steel mill worker.

Social Workers

The cataloguing of the archive of the British Association of Social Workers (BASW) is nearing completion by James King. Founded in 1970 by the amalgamation of seven existing organisations, BASW is the primary professional association for all social workers in the United Kingdom. The archives range from the late 1960s to the 1990s and give a comprehensive picture of the activities of social workers and the organisation of social work during that period, as well as considerable information on late 20th century British social, medical, psychiatric and legal history.

The archive includes minutes, reports, publications and subject files, and complements the archives of the predecessor associations, which have already been catalogued. A number of case files on some of the significant child abuse inquiries from the 1970s and 1980s are also included.

According to Dr Mathew Thomson, Director of the Centre for the History of Medicine at Warwick, who intends to use the collection in his research on the history of children in post-war Britain: "The British Association of Social Workers archive is providing an important source for research in history of medicine...the extension of cataloguing to the period after 1970 opens a key source for an emerging social history of this period."

The cataloguing of the BASW archive has been funded by a grant from the Wellcome Trust.

Other collections

In addition several other archives have been made available during the year including:

Civil Service representative bodies. The largest of these archives are those of the Staff Side of the National Whitley Council for the Civil Service, the Civil and Public Services Association (formerly the Civil Service Clerical Association), and the Society



of Civil and Public Servants. They cover a wide range of issues, from purges of Communists and Fascists to pencil sharpeners and soap in government offices, with pay and conditions inevitably featuring prominently.

Industrial Society (MSS.303), earlier the Boys' Welfare Society (BWS) and now known as the Work Foundation. The Society's principal activities were in the field of personnel management and the archive includes *The Journal of Industrial Welfare* from 1920 to 1988 (with various name changes).

Federation of British Industry (FBI) archives. This large collection of one of the predecessors of the CBI contains a huge range of material on the economic and industrial development of Britain and its international trade relationships, particularly in the post-war years. The full catalogue is now available online.

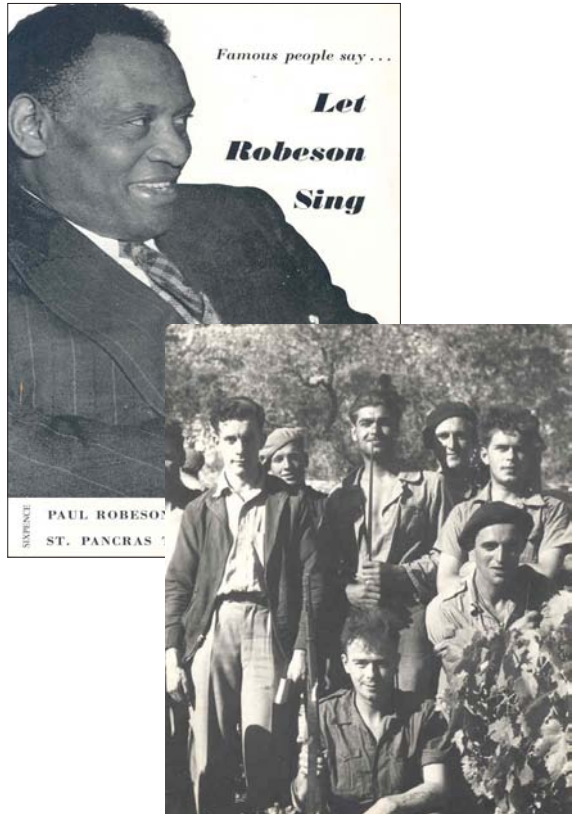
Direct links to the catalogues of all of our available collections have been sent for inclusion on the National Register of Archives. This will further increase the visibility of our holdings and the ease with which researchers can find out about them. Work has also continued, in conjunction with IT Services, on ensuring that links to superseded catalogues are redirected to the current versions.

Publicity and Outreach

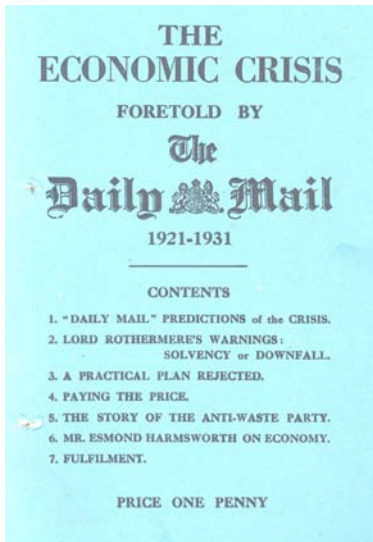
Liz Wood prepared a number of exhibitions during the year including 'Let Robeson Sing' – a joint exhibition organised by the Capital Centre (Creativity and Performance in Teaching & Learning) at Warwick and supported by items from the collections of the Modern Records Centre, the Royal Shakespeare Company and the Shakespeare Birthplace Trust. It coincided with the first performances of a new RSC production of *Othello* at the Warwick Arts Centre.

An on-line exhibition was produced by James King to commemorate Jack Jones CH MBE, who died on 21 April 2009. The MRC holds his personal papers and official files from his period as General Secretary of the Transport and General Workers' Union.

An exhibition on 'World Chaos' was also put together in response to the economic crisis, and the US Presidential elections in 2008 were an opportunity to produce an exhibition encompassing previous presidential elections and the civil rights movement in the US.



(MSS. 79/6/CJ/3/22) Election leaflet for John F Kennedy, 1960



Resources for Warwick Modules

In July 2008, the first of the 'Resources for Warwick modules' webpages went online. This contained images of a small selection of documents relevant to the University of Warwick History module 'British Culture and the Great War', together with explanatory text and links to the online archive catalogue. In total nine webpages for seven undergraduate modules in the History, Politics and Sociology Departments were completed for the 2008/9 academic year, covering subjects such as 'Social Welfare in Britain', 'The Politics of Protest' and 'Anti-fascism, Resistance and Liberation in Western Europe'.

The resources have proved popular - with over 34,000 hits in the first 12 months - and have helped to build stronger links with the academic departments within the university. Margot Finn, Head of History, described the resources as "a tremendous boon for research-led teaching in the History Department ... Thanks to this excellent development, History students are able to make much more comprehensive and much more active use of the MRC's wealth of resources".

The online resources have been used as the raw material for research projects and to prompt discussion amongst students in seminars - as Roberta Bivins, a tutor on the History module 'Making of the Modern World' (HI153), commented - "My students have really enjoyed the exercise of working with 'real' history. One in particular spoke to the rest of the students in his seminar about how moving he found it to really hear the voices of people who were directly experiencing empire." They have also provided a valuable introduction to primary sources - as one undergraduate has commented, archives provide "a chance to look outside the 'canon'" and allow students to think for themselves.

Five new webpages will be added for the 2009/10 academic year, ranging in subject from 'Politics and Society in Eastern Africa' to 'The Victorian City'.

In addition to the visual resources, there are now pages of 'ready made catalogue searches' for a range of other modules. These include the 'History of Russia since 1881', 'War, Revolution and Reform: China since 1900' and 'Northern Ireland 1968-1998'. These pages will help to reveal the range and depth of items available at the Centre.



(MSS. 292B/943/19) Checkpoint Charlie, American Sector, Berlin 1961

(MSS. 200b/3/2/C751/1) 'New Ventures in Broadcasting'. 'Britain in the 20th Century' module



Talks and Tours

One result of the more visible resources available online has been a noticeable increase in the number of induction sessions and student visits made to the Centre.

Introductions to archives and the MRC for students of the History (Theory Skills and Method), Making of the Modern World and Sources for the Great War modules at the beginning of the academic year are regular sessions, though the numbers participating continue to increase.

The sessions for Visual Sociology continue to grow in popularity – last year 42 students were introduced to a range of photographic sources from both the MRC and BP Archive, with a number of these choosing to develop a project based around these resources.

There have been additional sessions requested this year as a direct result of the Warwick online modules: MA politics students were introduced to the Centre for the first time for a session on qualitative research and the History department also requested induction sessions on East African history sources.

Sociology Field Studies numbers have also increased so that we gave four sessions to this group in Feb 2009.

The total number of students introduced to the Centre was 205 and 16 different groups were provided with talks.

The Centre was also host to the Warwick 'Junior Commissioners' (age 11-17) in July 2009. A group of students from various countries selected by the International Gateway for Gifted Youth and researching education as a human right spent the morning looking at a range of

materials and toured the strongrooms.

As well as the visit by representatives of the British Steel Archive Project mentioned above, we also hosted a visit by Maggie Shapley of the Noel Butlin Archives Centre at the Australian National University and a group of university records managers from Norway. More recently a tour was given to Professor Bob Fryer, a new member of our Advisory Board.



Behind the Scenes

Carole Jones has spent a large part of the year preparing the upper strongroom for the reshelving project in January 2010. Many of the smaller collections and some of the split collections have been moved and reunited, providing more space and ensuring there are no strays for the move.

In the second phase of the scheme to increase storage capacity, the archives in the upper strongroom will be moved out of the Centre and the current shelving replaced. This will affect a number of collections, which will be temporarily unavailable, and we will publish details of those affected on our web pages and in a special Bulletin towards the end of the year.

University Archives

This academic year there has been great interest in the university archive's visual resources and its photographic collections have been used to chart Warwick's 'philanthropic journey', prompt reminiscences from figures formerly associated with campus, and explore the innovations in architecture associated with the new universities of the 1960s. The archive has also supported academic research relating to the development of health provision for students during the twentieth century and contributed to a project on the changing nature of university teaching and learning spaces. In addition, the renovation of Warwick's Art Centre has prompted visits from staff interested in compiling its history, while external enquiries have included requests for information relating to the honorary degrees awarded by Warwick to Lenny Henry and Humphrey Lyttelton. At present cataloguing is underway of the papers for Warwick's seven major committees, and is soon to start on the latest Lord Rootes Reports and a recent deposit of university publications.



(UWA/Photos/IV.B.3/1.) Student protest against the Vietnam war.

(UWA/Photos/II.C.2/1.) Arts Centre 1978.



Additional help and volunteers

We have been fortunate to have had the help of a number of volunteers at the Centre during the year.

Julie Moores is currently studying for an archive qualification on the distance learning course at Aberystwyth. She started working with us last October and has produced a number of lists including the National Union of Tailors and Garment Workers. She has also worked on a short term project for the Capital Centre and produced a catalogue of the archives of the Northern Broadsides Theatre Co.

Carolyn Ewing has also recently started voluntary work at the Centre and is helping with the listing of small collections of furniture trade unions.

The indexing of the first membership register of the Amalgamated Society of Railway Servants (containing membership details back to 1872) was continued first by Paul Smith and then by James Barber, son of Steve Barber of the University Library. To date, over 1,800 entries have been added and the year 1878 has been reached. There is a great deal more work needed to complete this volume, but as the index grows it will become increasingly useful to staff answering enquiries about individual railwaymen.

2008/2009 Statistics Summary

The number of visitors rose from 279 to 390 during the year and the total number of visits made increased from 1,695 to 1,922. The Centre continues to attract a larger proportion of its users from outside Warwick University, though as noted above, we have seen an increase in the number of student introductions to the MRC.

Although the number of email, postal and telephone enquiries is slightly reduced from 2007/8, the number of web visits has increased. These statistics are possibly related as more people are able to access the catalogues and discover material or check items for themselves.

Last year's figures in brackets.

Archives

Total visits: **1,029** (832) made by **390** (279) readers.
Internal (Warwick) reader visits: **395** (279)
External reader visits: **634** (553)
Archives produced: **36,018** (28,565) [includes BP: **1,214** (1,966)]
Student inductions: **16** (9) groups totalling **205** (132) students

Theses

Total visits: **893** (863)
Theses produced: **1,532** (1,108)

Evening visits

Total: **280** (222)
Archives: **182** (135)
Theses and Special collections: **78** (66)
BP: **20** (21)

Enquiries

Email, post and telephone: **1,001** (1,036)

Web visits: **231,950** (211,302)

Photocopies: **4,790** (4,317)

Digital images taken: **27, 443** (24,480)

Accessions

There were 45 deposits during the year.

Acc No.	Title	Deposit Date
639	National Union of Teachers (NUT) and National Association of Teachers in Further and Higher Education (NATFHE) /Association of University Teachers (AUT), now UCU: Minutes, conference papers, reports.	08/08/2008
640	Social Workers' Benevolent Trust (SWBT): Minutes and papers, 2005-2006	12/08/2008
641	Trades Union Congress: Reports	04/08/2008
642	Transport and General Workers' Union: Additional records	12/08/2008
643	UK Association of Professional Engineers (UKAPE) (Amicus section of Unite)	11/09/2008
644	Newspapers printed during the General Strike	26/09/2008
645	Transport and General Workers' Union: Additional material	03/10/2008
646	Biscuit, Cake, Chocolate and Confectionery Alliance (BCCCA): Minutes, journals, correspondence	01/10/2008
647	Records of the Iron and Steel Trades Confederation and related bodies: Midland Iron and Steel Wages Board; Welsh Tinsplate and Sheet Trades JIC; Sheet Trade Board; misc. publications; merger meetings with National Union of Blastfurnacemen and Steel Industry Management Association; meetings of trade unions in steel, coal and rail triple alliance; police report on national steel strike.	08/10/2008
648	International Transport Workers Federation: Additional records	21/10/2008
649	Operational Research papers of British Coal	30/10/2008
650	Wolverhampton Operative Tin-Plate Workers' Society	13/11/2008
651	National Amalgamated Sheet Metal Workers and Braziers	13/11/2008
652	Birmingham Operative Tin-Plate, Sheet Metal and Braziers' Society	13/11/2008
653	Papers of Brenda Dean (SOGAT): News International dispute	12/11/2008
654	Research papers of Dr Paul Smith on road transport and haulage	19/11/2008
656	Confederation of British Industry (CBI)	10/12/2008
657	Papers of Rodney Bickerstaffe: NALGO summer school photographs, 1930-1933; UNISON records; speeches; cuttings; Labour Party campaign material, mainly Sussex, 1930s-1950s (papers of David Packham, NUPE National Health Officer)	26/11/2008
658	Additional papers of Victor Gollancz: German peace prize awarded to him, 1951	19/12/2008
659	Commercial Vehicle and Road Transport Club (CVRTC) Newsletters, 2008	06/01/2009
660	Records of the Auto Cycle Union: Minutes and accounts, trials and time records etc., 1903-1993	07/01/2009

661	Trotskyist and other left-wing periodicals and pamphlets: <i>Socialist Worker, Workers' Power, Class Struggle</i> and others, 1980s-2000s	16/01/2009
662	Papers of David Michael Beaton, industrial relations officer and manager: includes his office diaries, 1968-1971	19/01/2009
666	Transport and General Workers' Union. <i>The T&G Story</i> , 2008	26/11/2008
669	Socialist Fellowship	14/01/2009
670	Frederick James Barrell: Membership cards of the London Society of Compositors	28/01/2009
671	' <i>A long road to equality for the unsung heroes of the NHS</i> '; booklet produced by UNISON North West Region's NHS Private Contractors Forum	23/02/2009
672	<i>Big Flame</i> , socialist newspaper 1970-1981	11/03/2009
674	Guidance booklets of the National Union of Civil and Public Servants, the Public Services, Tax and Commerce Union and others	12/03/2009
675	National Union of Teachers: Annual Report and <i>The Teacher</i>	13/03/2009
676	CTC Continental Road Books annotated by W G W Goodworth, 1895 - 1900	02/04/2009
677	NALGO additional papers and publications (collected by M. Ironside for published history of NALGO): Bound volumes of the union's journals 1920-1970, and minute books of the 'emergency committee'	25/03/2009
678	Fire Brigades Union; Additional publications	31/03/2009
679	Association of British Steel Pen Makers: copy minutes, 1918-1959	02/04/2009
681	Amalgamated Society of Gilders: minute book 1878-1928	09/04/2009
682	Transcript of notes from Communist Party Summer School	15/04/2009
684	Transport and General Workers' Union: Additional material	21/04/2009
685	National Association of Staff Support (within the Health Care Services)	14/05/2009
690	Papers of James (Jimmy) Barnes, trade union and peace activist: Correspondence, articles and campaigning materials, 1980s onwards	06/07/2009
691	Additional papers of Tony Lane: transcripts of interviews with Lord (Alf) Allen, Gen. Sec. of USDAW in the 1970s, and with Alan Jackson, shop steward at United Glass, St Helens in the 1980s	07/07/2009
692	Transport and General Workers' Union: Health & Safety Department	04/07/2009
693	Allison Edwards Papers: Biography of Harry J Edwards, Chairman of the GEC, TGWU, with copies of press cuttings etc; dissertation on the TGWU in the Second World War	13/07/2009
694	Society of Civil Servants, Immigration Staff Branch, Dover Group: Transcription from original minute books and diary. 1946-1949	14/07/2009
696	Glacier Metal Company Ltd: Company magazines; books by Wilfred Brown and Elliott Jaques; unpublished history	22/07/2009
697	Diaries and papers of Ron Savage, Industrial Relations Manager at British Leyland, Longbridge	07/08/2009

Further Information

Advisory Board Members:

Mr R. Bickerstaffe (Chairman) (until July 2009)
Ms A. Bell (University Librarian and Director of the MRC)
Mrs C. Davies (CBI)
Ms R. Donaghy
Professor R. Fryer
Professor D. Howell
Professor R. Hyman (until July 2009)
Ms J. Henderson (TUC)
Professor H. Marland*
Professor J. Melling (until July 2009)
Lord Morris of Handsworth
Professor S. Palmer
Professor M. Terry* (retired)
Professor P. Thane
Dr M. Thomson*

*Members of the MRC Academic Committee

Modern Records Centre Staff

Ms Anne Bell, University Librarian, Director
Helen Ford, Archive Manager
Carole Jones, Records Assistant
James King, Senior Assistant Archivist
Elizabeth Morrison, Records Assistant (part-time)
Martin Sanders, Senior Assistant Archivist
Andree Whittaker, Records Assistant (part-time)
Elizabeth Wood, Assistant Archivist



The Chairman of the Centre's Advisory Board, Rodney Bickerstaffe stepped down in July 2009 after nine years in office. Rodney has been an avid supporter and advocate of the Centre, enthusiastically attending and speaking at events such as the launch of the TUC catalogue, chairing the annual lectures and encouraging friends and colleagues to visit and use the Centre. He was instrumental in the deposit of a number of key trade union collections and continues to deposit his own papers with alarming regularity.

Rodney brought the same generosity in terms of his time, help and enthusiastic support for the MRC as he does to his other commitments. We were therefore delighted that Rodney's contribution to public life was acknowledged in July 2009 with the award of an Honorary Doctor of Laws by the University. He will be greatly missed in his official capacity by the Centre but we hope he will stay in touch as a friend.

Contact details

Modern Records Centre
University of Warwick Library
Coventry CV4 7AL
Tel. 024 7652 4219
Fax. 024 7652 4211

Email. archives@warwick.ac.uk
URL: www2.warwick.ac.uk/services/library/mrc/