

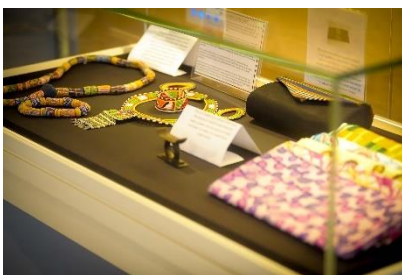
# NEED DISSERTATION INSPIRATION? DISCOVER SOURCES AT THE MODERN RECORDS CENTRE

BY MELISSA PRIOR, MRC ARCHIVIST



*If you're about to head into your final year of undergraduate study at Warwick, you might be thinking ahead to your dissertation or research project. If you're stuck for ideas, why not check out Warwick's Modern Record Centre? MRC Archivist Melissa lets us in to some of the secrets of the MRC.*

Many students in their final year of university have to complete a dissertation or long-form research project as part of their degree. This project is an opportunity for you to get stuck in to an area of interest, as well as showcasing the research skills you've developed on your course. However, you might be feeling a little stuck as to what to research, or how. This is where Warwick's Modern Record Centre may come in handy.



## So, what is the MRC?

The Modern Records Centre (MRC) is a treasure trove of historical material right here on your doorstep. As part of the University of Warwick, all students have access to its collections. Our collections focus on economic, social and political history from

the 19<sup>th</sup> century onwards. Highlights include:

- Over 500 trade union collections
- Material from prominent individuals including Richard Crossman, Ernest Bevin and Victor Gollancz
- Archives relating to the British Trotskyist Movement, including the central archives of the Socialist Party and the International Marxist Group
- Over 50 collections on pressure and protest groups
- Records relating to cycling
- The archive of the University of Warwick
- And much more!

## Finding Sources

To see if we hold any material relating to your dissertation try searching for a keyword in our [online catalogue](#). Archives are arranged into collections created by different individuals or organisations.



Your search results will most likely list items from several different collections. It is a good idea to look at which collection an item comes from, the date and description as this will give you more information about whether it is likely to be relevant to your research. Find out more about [how to search the MRC catalogue](#).

# NEED DISSERTATION INSPIRATION? DISCOVER SOURCES AT THE MODERN RECORDS CENTRE

BY MELISSA PRIOR, MRC ARCHIVIST



and to provide proof of your ID e.g. your university card, passport or driving licence.

*We look forward to seeing you soon!*

You may also like to have a look at the [ready-made searches](#) of our catalogue on popular topics.

---

*...a treasure trove of historical material...*

---

## Visit us

The Modern Records Centre is open on Mondays, Tuesdays, Wednesdays, and Thursdays (9am-5pm) and Fridays (9am-4pm). It is helpful, but not essential, to give us advance notice of your visit, at least a minimum of one full working day (i.e. more than 24 hours) if possible.



On your first visit you will be required to complete a research application form