



WARWICK
THE UNIVERSITY OF WARWICK

Warwick International
Foundation Programme
2024/25



Your degree starts here

The
best start
to your
studies...

67th
in the
world

QS World
University
Rankings 2024

11th
in the
UK

Complete
University Guide
(CUG) 2024

Ranked
9th in
the UK


The Guardian
University
Guide 2024



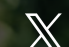
Welcome to just the start





Find us online

 warwick.ac.uk/ifp

 [Facebook.com/WarwickIFP/](https://www.facebook.com/WarwickIFP/)

 [@WarwickIFP](https://twitter.com/WarwickIFP)

 [Warwick International
Foundation Programme](https://www.youtube.com/WarwickInternationalFoundationProgramme)

 [Warwick_IFP](https://www.instagram.com/Warwick_IFP)

The Warwick International Foundation Programme (IFP)

Choosing to study at Warwick means joining a world-leading university. And by choosing to study on the Warwick IFP, you're giving yourself the best possible start to your undergraduate studies.

Through intensive teaching and continuing support, you can develop confidence in more than just your studies and be prepared to enter the university degree of your choice.

You'll be joining a course that is taught on the University of Warwick campus - with access to all the world-class facilities our university campus has to offer. You'll study a subject that interests and challenges you, in a safe and welcoming environment.

We're one of the longest-running International Foundation Programmes in the UK, so we're experienced in making the transition to UK education as exciting, engaging, and enjoyable as possible for our students.

Our expert team of academic and support staff can help you every step of the way through your course.



" Warwick IFP gave me a boarding pass to an international experience and outstanding support to begin my undergraduate studies."

Mehdi, Warwick IFP graduate, now studying MORSE at Warwick

250+
PLACES
EACH
YEAR

with students from
over **30 countries**
across the world



Established in 1983
MORE THAN
40 YEARS'
EXPERIENCE

in supporting
students to
progress to top
UK universities



UNIVERSITY
AND CAREER
ADVICE AND
GUIDANCE

helping you to enter
the university and
degree course of
your choice



CAMPUS
LIFE

with IFP students
eligible to apply
for prioritised
accommodation
on-campus in the
University's Halls
of Residence



Fully enrolled
Warwick students,
with access to over

300
STUDENT-RUN
SOCIETIES AND
SPORTS CLUBS



SPECIALISED
ACADEMIC
STREAMS

to prepare you
for a range of
specific degree
programmes



INTENSIVE
ACADEMIC
ENGLISH
TUITION

tailored to
discipline areas



GUARANTEED
CONDITIONAL
OFFERS FOR
A RANGE OF
WARWICK DEGREE
PROGRAMMES

giving you the
confidence in the
quality of our courses

What courses can I study?



Business Management

Our Business Management course is the perfect preparation for progression on to a degree programme in Management, or Business Studies. Providing you with a sound knowledge of the key principles and concepts on which business, management and finance practices are based, you'll also look at international trade and the environment in which businesses operate today.

Finance

The Finance IFP is designed for students looking to develop and become more competent in the mathematical and statistical techniques necessary for successful study on degree-level Finance-related programmes. By considering the basics of international finance and development economics, you'll become more confident in these areas ahead of your degree studies.

Mathematics and Statistics

As well as developing your understanding of mathematical processes, further mathematics and statistics, our Mathematics and Statistics IFP will allow you to recognise and appreciate the scope of the application of mathematics in finding solutions to real-world problems across a range of disciplines. You'll have the opportunity to consider mathematical modelling, interpreting, and evaluating the outputs of mathematical models in the context of the original situation.

Economics

The Economics IFP is a great way to prepare for an undergraduate degree in a related subject area, as it provides you with a sound knowledge of fundamental economic concepts and principles and their application to real-world situations. In addition to developing your further mathematics and statistics skills, you'll also look at using these mathematical tools in economic models and will consider the links that economics has with subjects such as politics and business.



Computer Science

Studying on the Computer Science IFP will allow you to combine the theory of computing with practical computing activities including programming and application of the software lifecycle. You'll be introduced to the fundamental aspects of the academic discipline of computer science, including the use of formal languages in computer science such as programming and algorithms.

Physics and Engineering

The Physics and Engineering IFP will support you in further developing your skills in the fundamental subjects of Mathematics and Physics. You will be given the opportunities to not only learn the theory of these subjects, but also take on practical experiments, allowing you to test the knowledge that you have gained and apply it to the real world.

Biological Science and Psychology

Studying the Biological Science and Psychology IFP offers you the opportunity to combine the study of Biology and Psychology. You'll improve your knowledge of scientific concepts and processes, as well as acquiring confidence in statistics for science, and the scientific laboratory techniques and procedures that you'll need to be familiar with to be successful on a related undergraduate degree.

Social Science

The Social Science IFP will introduce you to the family of disciplines that constitute the social sciences. You'll consider society and the world around us, allowing you to evaluate a range of contemporary social issues and events in an interdisciplinary way. With modules including Politics and International Relations, and Understanding Society, you'll be prepared for a wide range of undergraduate degree options upon completion of the course.

Law

If you already know that a Law degree is right for you, then our Law IFP offers you a great way to prepare for your undergraduate studies. You'll gain an underpinning knowledge of the English Legal System, developing an understanding of the role of the court hierarchy and personnel involved in the law. You will establish relevant links between current events and law reform and look more widely at International Relations and Society.

Arts and Humanities

Our Arts and Humanities IFP will offer you the opportunity to explore a range of disciplines including History, Philosophy, Film Studies and Literature, and support you in developing the relevant analytical skills required to be successful on a degree course in these areas. You'll also develop skills in the close analysis of culture through the study of visual, material and textual cultural forms, such as art, film, digital and print media, museum and gallery displays.

Inquiry and Research Skills

Studying in the UK means you could be learning to engage critically with your chosen subject in a completely new way than you've been used to in your school environment.

Our bespoke Inquiry and Research Skills modules draw the learning from each of your discipline modules together, helping you develop and deploy the critical thinking and cross-disciplinary understanding that will prepare you for your future studies. This module is a core, tailored part of your course, enabling you to develop deep analytical skills alongside key study skills relevant to your chosen discipline.

You'll start this module by considering what critical thinking means, learning to identify and construct arguments, as well as recognising and adjusting to cultural differences such as new academic customs and learning styles. As the module progresses, you'll develop your critically reflective reading and writing skills, applying them to your chosen programme of study.

Our supportive teachers will encourage you throughout the year, as you learn to develop and discuss your ideas confidently across a range of settings, from extended written projects to presenting at a conference.

“ Every student was respected to share their own opinions; the class was engaged. Everyone could learn together from one's curiosity.”

Michelle, IFP graduate, now studying International Management at Warwick



Developing your Academic English

Our English for Academic Purposes (EAP) modules are also core to the programme, with each EAP module appropriately tailored to your academic discipline and designed to enhance your academic English skills.

The competencies that you develop in the EAP module will support your achievement in your academic subjects too, meaning that the module will benefit you, whatever your level of English language.

From the outset of the module, you will be introduced to a variety of techniques for analysing texts appropriately, within your academic discipline. You'll develop a range of skills from listening to lectures strategically and organising your academic writing, to staging effective, engaging presentations.



“ My English teacher and tutor have given me countless support. They offer me much guidance in English, especially in writing; this is really helpful, and I can see great improvement in my writing, which later benefits my essay assignments in other subjects.”

Christina, IFP graduate now studying MSc Finance at Warwick

Where can the IFP take me?

As a student enrolled on the Warwick IFP, you will receive a guaranteed offer of a place on a related undergraduate programme at the University of Warwick, when you apply to Warwick through UCAS (Universities and Colleges Admissions System).

But that's not all - you can also use the IFP to apply to other leading UK universities and we'll support you no matter where you want to go to.

We have a dedicated Education and Liaison Officer, as well as your Personal Tutors, who are all focused on supporting you through your UCAS application to Warwick and other UK universities. You'll receive personalised guidance from them about the next steps to undergraduate study, as well as to help you start thinking more about your career aspirations.

You may have always known what you want to study, or maybe you want to keep your options open. The Warwick IFP can be the foundation for your future study, wherever you choose to go.

"I just want to say to all the future students to come here open-minded and be ready to embrace the change of life in the UK as an international student!"

Htet, IFP Business Management graduate 2022, now studying at Warwick Business School

IFP Students typically progress to
70 DIFFERENT COURSES
EACH YEAR

IFP Students typically progressed to
25 DIFFERENT UNIVERSITIES
EACH YEAR

Over
75%
OF IFP
STUDENTS
PROGRESS TO A
RUSSELL GROUP
UNIVERSITY

More than
800
STUDENTS HAVE
PROGRESSED TO
UNIVERSITY OF
WARWICK OVER
LAST 10 YEARS

Depending on your chosen IFP course, you can progress to a huge range of undergraduate degrees at Warwick, including (but not limited to) those shown below.

Undergraduate Degree Course

IFP Course

	Business Management	Finance	Mathematics & Statistics	Economics	Computer Science	Physics and Engineering	Biological Science & Psychology	Social Sciences	Arts & Humanities	Law
BSc Accounting and Finance		●		●						
BSc Biochemistry							●			
BSc Biomedical Science							●			
BSc Computer Science			●		●					
BSc Data Science			●	●	●					
BSc Economics				●						
BA/BSc EPAIS				●				●		
BEng Engineering (Automotive, Civil, Electronic, Mechanical, Systems)						●				
BA English Language & Linguistics									●	
BSc Health and Medical Science							●			
BA History									●	
BSc International Management	●									
LLB Law										●
BSc Management	●									
BSc Mathematics			●							
BSc MORSE			●	●	●					
BSc Neuroscience							●			
BA Philosophy									●	
BA/BSc PPE				●				●	●	
BA PPL								●		●
BSc Physics						●				
BA Politics								●		●
BSc Psychology							●			
BA Sociology								●		
BASc Global Sustainable Development	●						●	●	●	●

Student support

We'll support you throughout your time on the Warwick IFP, from when you first apply, through to when you complete the course.

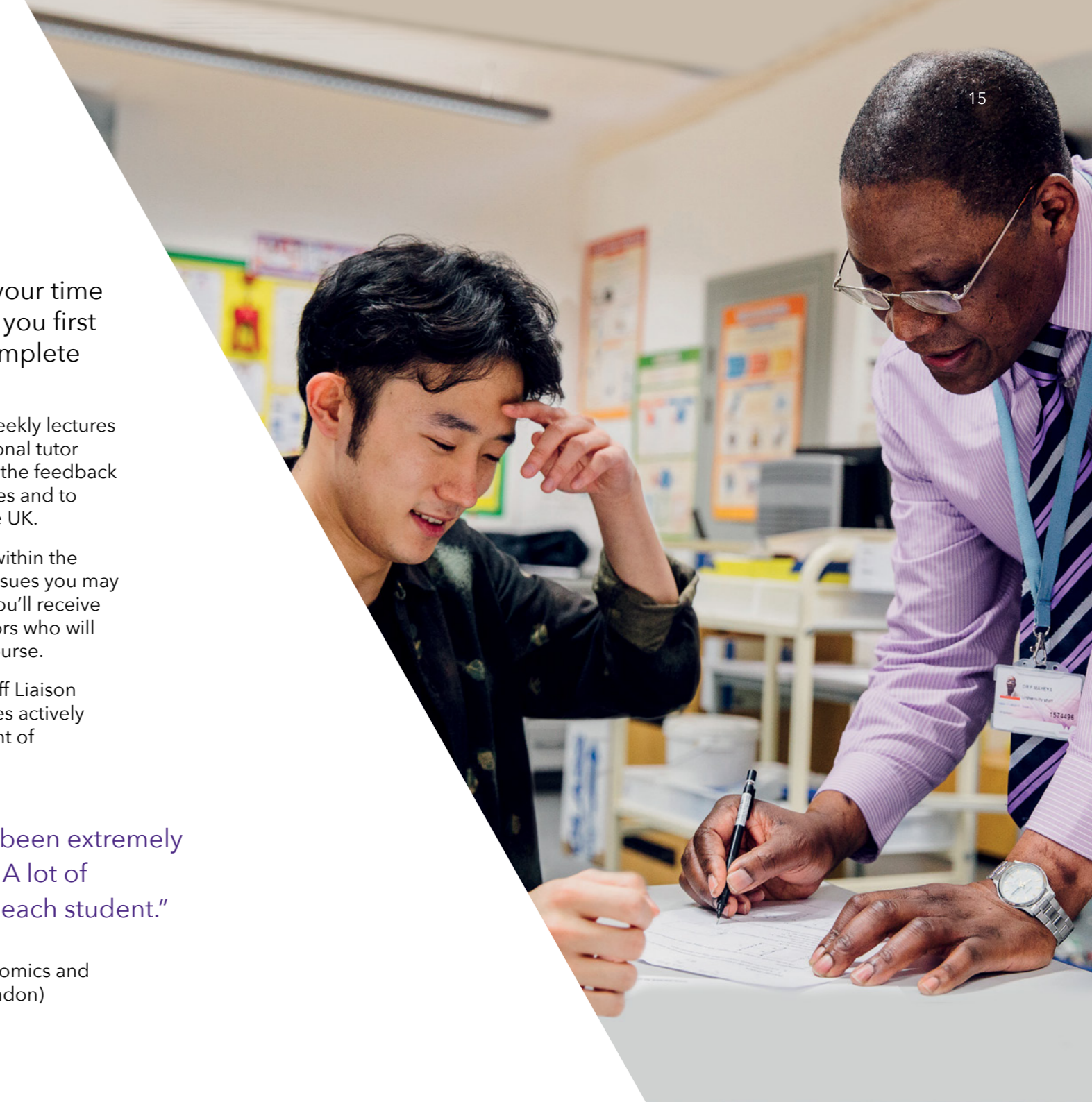
Once you have arrived, as well as your weekly lectures and seminars, you'll meet with your personal tutor regularly to support you in learning from the feedback you've received in your academic modules and to ensure that you are settling into life in the UK.

You'll also have access to a Senior Tutor within the department who can help you with any issues you may encounter during the programme, and you'll receive academic support from your module tutors who will monitor your progress throughout the course.

You'll benefit from our active Student-Staff Liaison Committee, where student representatives actively contribute to the review and development of our courses.

“The teachers on the IFP have been extremely supportive, friendly and kind. A lot of personal attention is given to each student.”

Yashi, IFP graduate, now studying Economics and Business at UCL (University College London)



Societies

There's more to the Warwick IFP than just your academic studies. Being part of the Warwick IFP means you'll have full access to the Warwick student experience – from Warwick Arts Centre and the live events hosted there, to opportunities to take part in more than 250 student-run societies.

As a student at Warwick, you'll also be a member of our Students' Union, which supports all our societies and sports clubs. So, whether you're interested in food, films, faith, or something completely different, there's bound to be something for you. And if you can't find a society that catches your interest, you can always create your own.

“ There are lots of funny and interesting societies, but also there are lots of societies that can support you. Meeting people at society events has really helped me improve my English ”

Maria, IFP graduate, progressed to Warwick Business School and has now completed her MSc Business with Marketing

Sport

With a fantastic state-of-the-art Sports and Wellness hub on campus, you can stay active and support your health and wellbeing.

You can also make the most of our 65 sports clubs, plus courses, leagues, and pay-and-play sessions. You might think you don't enjoy sport, but university is a chance to try new things, and we have a huge range of sports you might never have tried before, from dodgeball to Ultimate Frisbee. Whether you're an absolute beginner or a world-class competitor, you can join in at whatever level you feel comfortable.

“ I love to play sport and at Warwick I can do that three or four times a week and this is making me really happy ”

Arthur, IFP graduate, now studying Economics Studies and Global Sustainable Development at Warwick





Location

With major cities and countryside both within easy reach, our campus is perfectly positioned in the Heart of England – giving you fast and easy access to local history, beautiful countryside and thriving cities.

A thriving city

We're located in Coventry, a modern city with a rich history. You'll find major high-street shops, restaurants, nightclubs, and bars within a five-minute walk of medieval monuments.

The city is buzzing with new experiences to explore, you only have to set foot in areas such as the revamped Fargo Village, with its vintage clothes and gift shops, American diner, and handmade jewellery boutiques to see that.

Well connected

Of course, your Warwick IFP experience wouldn't be complete without a visit to the UK's capital city, London, which is just one hour away from Coventry by train.

Warwickshire towns

The elegant town of Royal Leamington Spa is within easy reach of campus by public transport. It's smaller than Coventry but still lively with plenty of bars, cafés, and shops to explore.

If you're looking for somewhere to discover history and heritage, nearby Kenilworth, Warwick and Stratford-upon-Avon have plenty of both. From experiencing live theatre in the house where Shakespeare grew up, to Warwick and Kenilworth castles, there's plenty to appeal to your cultural side.

Or you could just make the most of the beautiful Warwickshire countryside to get some fresh air and escape the crowds.



Accommodation

As a Warwick IFP student you'll be eligible to apply for accommodation on the University of Warwick campus. Joining the Warwick IFP probably means moving to a new country or living away from home for the first time – we work hard to help you settle into life at Warwick.

You can choose from several accommodation options, all a short distance from our amazing campus facilities. Life on campus means enjoying a safe, inclusive and welcoming atmosphere, helping you to feel at home and succeed in your studies. Living in university halls is a great way to meet people and form new friendships.

You'll enjoy the freedom of independent living, but with the reassurance of our support should you need it. You'll be welcomed by our Residential Community Team, who live alongside you in your accommodation, and are available for support throughout the year.

What's more, if you progress to an undergraduate degree at Warwick, you'll benefit from the familiarity of continuing your studies on a campus you know and love, helping you to settle quickly into undergraduate study and thrive on your chosen course.

“ My flat had 8 students and we were like a small family. I think that one of the main advantages of Warwick IFP is that its students live with other university students which allows them to get a closer insight about undergraduate studies.”

Mehdi, Warwick IFP graduate, now studying MORSE at Warwick



Make your application online at warwick.ac.uk/ifp/apply



How to apply

All applications for the Warwick IFP are made online, via our website.

Once you've completed an application form, we'll need to see a copy of your most recent school transcript and a personal statement so that we can start to assess your eligibility.

Your personal statement is your opportunity to tell us about your passion for your chosen subject area, as well as the reasons why you want to study at Warwick.

We provide full guidance on our website to make the application process as simple as possible for you and our Admissions Team are there to answer any questions that you may have; we also aim to make decisions within 5-working days.

"I really appreciate the service all the staff have provided here. They answered my countless questions before I arrived, and their friendliness has made it much easier for me to understand what I need to learn."

Nathan, Warwick IFP and BSc Accounting and Finance graduate



Entry requirements

We receive a high volume of applications each year, and places are offered on a competitive basis. In some circumstances you may be required to take part in a short interview (normally via Video Conferencing) to assess your eligibility for the course.

In most cases, we require strong high school grades of around 80-90%. Details of our entry requirements for a range of different countries is available on our website. If you can't find information for your specific country or qualification, you can contact us directly.

You will also need to demonstrate that your English language ability meets our minimum requirements, which varies depending upon the course you're applying to. An Extended Intensive English module starting 6 weeks before the course start date is available to certain students below this IELTS (International English Language Testing System) level. Full details of this module, as well as all the acceptable forms of English language test, are available on our website.

Key dates

Application Deadline	—○	Final Document Deadline	—○	Course Start Date	—○	Course End Date
31 July 2024		12 August 2024		23 September 2024		27 June 2025

Fees

Application Fee

All applications are subject to a non-refundable £75 (GBP) assessment fee.

Course Fees

Course fees for the 2024/25 academic year are £23,935 (GBP)

Academic Deposit

A deposit of £2,000 (GBP) is needed upon acceptance of the course offer to secure your place; this should be paid as soon as possible – your deposit deadline will be specified in your official offer email.

Accommodation Fees

Accommodation fees are payable directly to the University through Warwick Accommodation. Full information on fees and dates for payment will be sent to offer-holders via email in May.

Visas

It is important that you ensure you have an appropriate visa or immigration permission for studying in the UK. Your immigration permission should match your main purpose for being in the UK. For example, if your main purpose for being in the UK is to study full-time, you should apply for a Student visa.

Further information about obtaining a visa, as well as some of the most frequently asked questions, is available on our website, warwick.ac.uk/immigration.

Transformative Learning, Powering Futures

We provide student-centred pathway programmes and learning experiences that inspire, prepare and empower learners with the skills, capabilities and knowledge they need to advance to degree level study at Warwick, or another University of their choice.

With an innovative, holistic approach, combining teaching expertise with nurturing, personal support, we specialise in supporting driven, motivated individuals wherever they are on their learning journey, to progress and succeed.

Our unique portfolio of high quality programmes, from intensive, accelerated courses, to bespoke sessions and immersive tasters, enables each person to realise their full potential and open doors to their future.

Designed and delivered by the University of Warwick to unlock the talent of tomorrow.

For more information, visit the website at warwick.ac.uk/ifp





Contact the Warwick IFP team

Warwick IFP Team
Warwick Foundation Studies
University of Warwick
Coventry CV4 7AL UK

Tel. +44(0)24 76523003
Tel. +44(0)24 76528582

For a full list of our contacts
around the world,
please see our website
www.warwick.ac.uk/ifp

Speak to
our staff and
students



Virtual
Tour

