



Empowerment through Engagement

*My WP Journey & The Path forward at WARWICK:
Jano Manoharan and Erin Barona*

JANO MANOHARAN

- Final Year Economist, lucky enough to receive a contextual offer.
- First Generation
- From South East London, Lewisham



What is Widening Participation (WP)?

- ▶ You were eligible for Free School Meals while at secondary school
- ▶ You come from a low socio-economic background where your household income is below £35, 001
- ▶ You are in receipt of a Warwick Bursary or other means tested financial support
- ▶ Neither of your parents attended university and gained a degree (e.g. BA/BSc or equivalent) – *excluding if they were/are a mature student*
- ▶ You come from an area with low progression rates to higher education
- ▶ You are a student with disabilities

What does Student Voice mean?

Representation matters:
Students need role models
they can relate to and see
themselves in

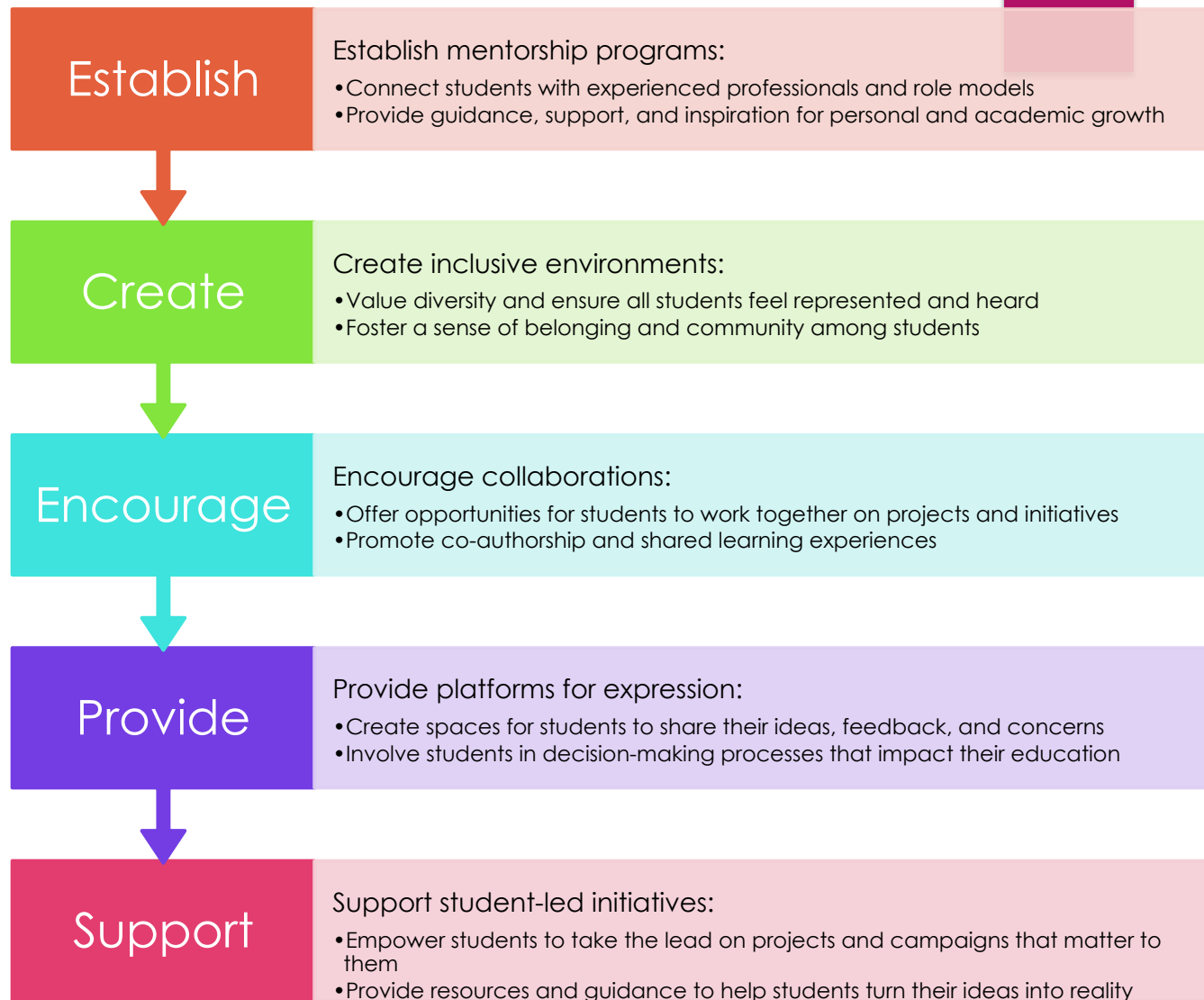
Opportunities for expression:
Students should have
platforms to share their ideas
and advocate for their
needs

Empowerment and
ownership: Students should
be empowered to take
charge of their learning and
have a say in decisions that
affect them

Inclusivity and diversity: All
student voices should be
valued, heard, and
represented in the learning
community

Collaboration and dialogue:
Student voice thrives in an
environment that
encourages open
communication and
collaboration between
students, faculty, and staff

How can we
improve
empowerment
of Student
Voice?



What does student success mean to you?



Warwick Advance:

Internships and career support tailored to your needs

Opportunities to gain practical experience and build professional networks



Exploring further opportunities at Warwick:

Discovering new interests and passions beyond your chosen field of study

Engaging in extracurricular activities, clubs, and societies



More than just attainments and grades:

Developing transferable skills and personal growth

Cultivating a well-rounded university experience



Maximising your potential:

Utilising MyAdvantage and Career Support services

Seeking guidance and resources to help you achieve your goals



Exclusive opportunities at Warwick:

Accessing unique programs, internships, and initiatives

Taking advantage of the diverse range of support available to students

How can we improve engagement of Student Success?

Offer

- Offer paid internships:
 - Digital Engagement Curator summer internship
 - Warwick Internship for Economics (WISE)
 - IMF Economist Program recruitment

Provide

- Provide personal and professional development opportunities:
 - Warwick Award to develop skills
 - Warwick Advance for internships and career support

Support

- Support international experiences:
 - Short Term Mobility opportunities (e.g., BUNAC Work USA, Summer Camp USA)
 - Warwick in Africa program

Offer

- Offer financial assistance:
 - Warwick Turing Scheme grants and bursaries for WP students

Foster

- Foster community engagement:
 - Encourage students to participate in local and global initiatives
 - Promote volunteering and community service opportunities

Celebrate

- Celebrate student achievements:
 - Showcase success stories and highlight student accomplishments
 - Create a culture of recognition and appreciation for student efforts

Bridging the Gap: University to Work Life

- ▶ - Address systemic barriers and biases that may hinder student success, particularly for underrepresented groups
- ▶ - Provide targeted support and resources for students facing additional challenges or disadvantages
- ▶ - Continuously assess and improve policies and practices to ensure they promote equity, inclusion, and accessibility for all students
- ▶ - Build strong partnerships with community organisations, schools, and families to support students holistically and bridge gaps between academic and personal lives
- ▶ Charities- SEO London, UpReach etc



What does the Access + Participation Plan for 2020-25 tell us?

New APP focuses on:

Current students and post-course/graduation success

Understanding the impact of interventions on students before implementation

Student consultation and collaboration in the process

Making the APP document accessible to students

Enhancing awareness and support for underrepresented groups:

Working with schools, colleges, and charitable organizations

Raising student achievement and expectations for higher education

Narrowing the gap by 2025:

Reducing the ratio of students from the most and least represented neighborhoods in higher education

From 7.5:1 to 4:1

Ensuring student success:

Providing tailored support and resources for students throughout their journey

Addressing barriers to access, retention, and progression

Committed to transparency and accountability:

Regularly reviewing and assessing the effectiveness of initiatives

Sharing progress and outcomes with the university community

Questions?



Or feel free to message me on
Linkedin: Janoshan Manoharan



Or email me at:
Jano.Manoharan@warwick.ac.uk



<https://uk.linkedin.com/in/janoshan-m>