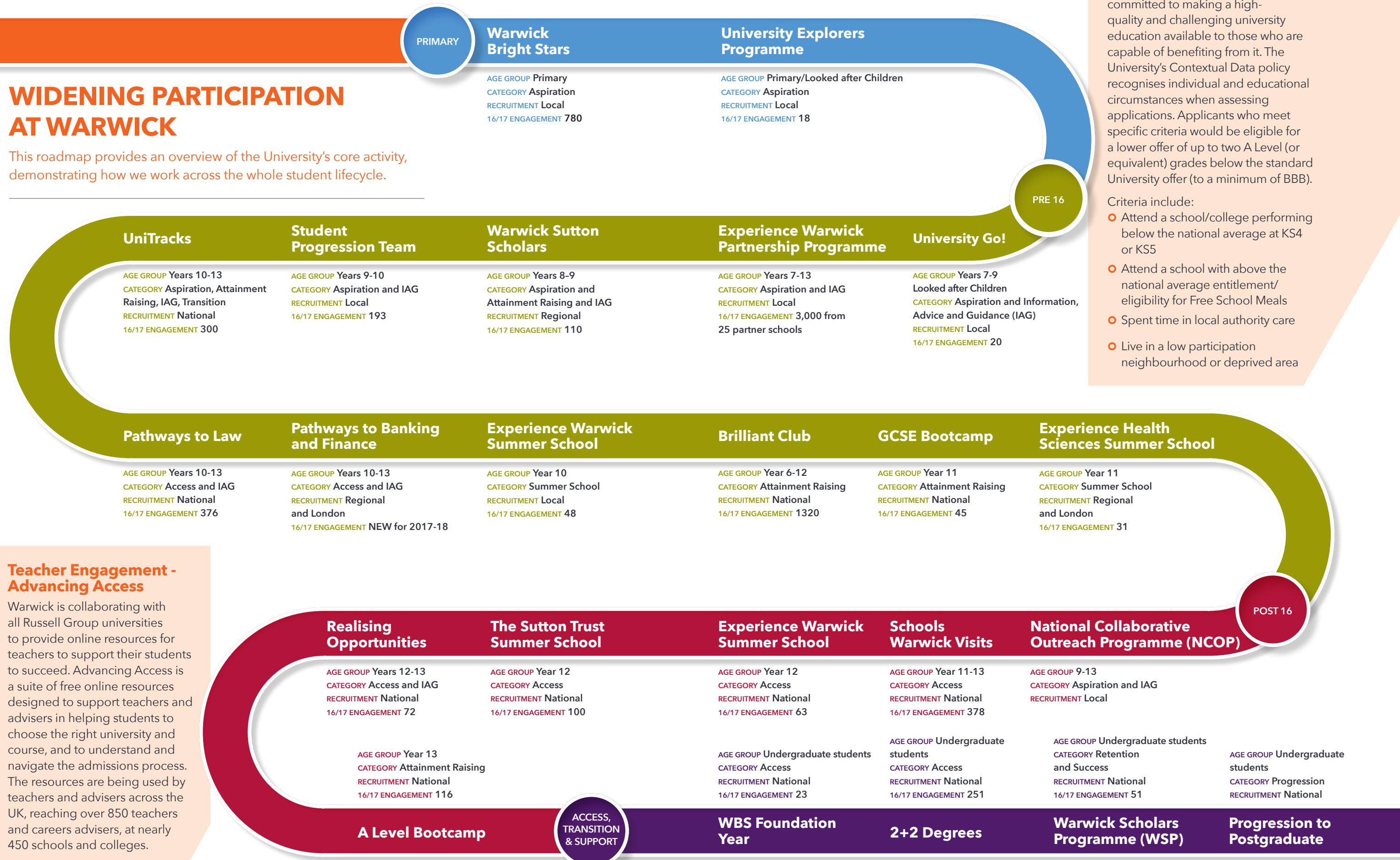




KEY TO RECRUITMENT
Local = Coventry and Warwickshire
Regional = West Midlands

WIDENING PARTICIPATION AT WARWICK

This roadmap provides an overview of the University's core activity, demonstrating how we work across the whole student lifecycle.



Contextual Admissions

The University of Warwick is committed to making a high-quality and challenging university education available to those who are capable of benefiting from it. The University's Contextual Data policy recognises individual and educational circumstances when assessing applications. Applicants who meet specific criteria would be eligible for a lower offer of up to two A Level (or equivalent) grades below the standard University offer (to a minimum of BBB).

Criteria include:

- Attend a school/college performing below the national average at KS4 or KS5
- Attend a school with above the national average entitlement/eligibility for Free School Meals
- Spent time in local authority care
- Live in a low participation neighbourhood or deprived area

Teacher Engagement - Advancing Access

Warwick is collaborating with all Russell Group universities to provide online resources for teachers to support their students to succeed. Advancing Access is a suite of free online resources designed to support teachers and advisers in helping students to choose the right university and course, and to understand and navigate the admissions process. The resources are being used by teachers and advisers across the UK, reaching over 850 teachers and careers advisers, at nearly 450 schools and colleges.