



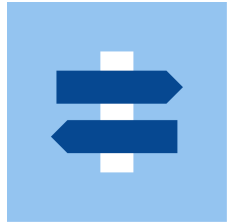
WARWICK
THE UNIVERSITY OF WARWICK

WARWICK ACCESS PROGRAMMES

YOUR CHOICE, YOUR JOURNEY



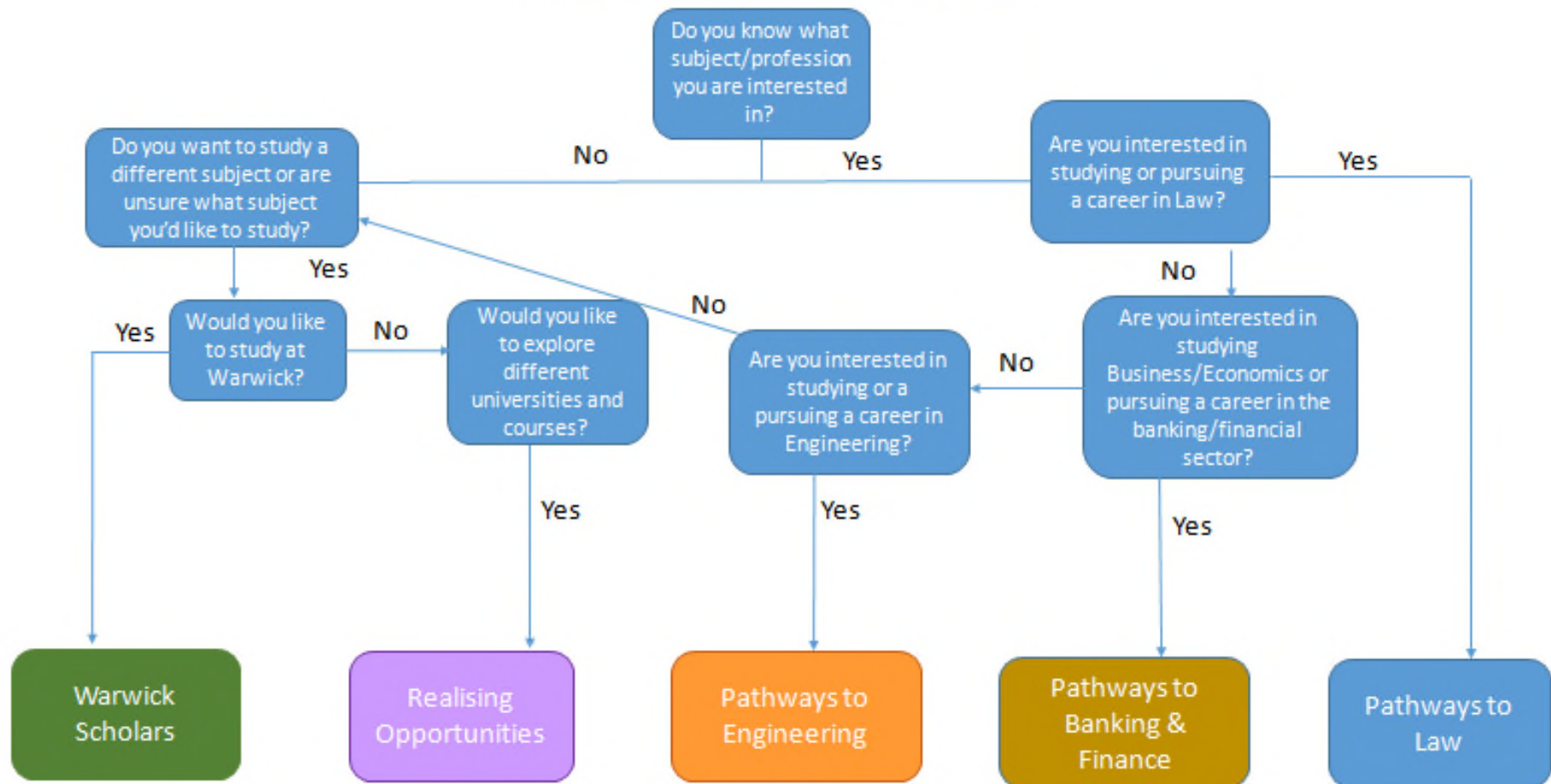
Our Programmes



Pathways Programmes



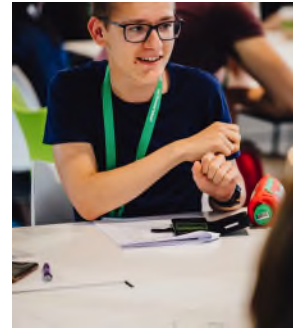
Choosing The Right Post 16 Programme For You



**Please visit warwick.ac.uk/outreach to check your eligibility for your chosen programme.*

All our programmes will give you...

**Support
with UCAS**



Taster lectures

WARWICK
THE UNIVERSITY OF WARWICK

New friends



Academic Skills



**A feel for what it is
like to be a student
at university**

And on successful completion even more...

An alternative offer



The ability to apply for a £2000 bursary



WARWICK
THE UNIVERSITY OF WARWICK

Special consideration

Enabling you to make informed choices

Eligibility criteria

All our programmes have similar eligibility criteria

Essential Criteria:

- Attend a state funded school / college
- Studying in Year 12
- Be eligible for Home UK fee status
- Academic Criteria:
 - Achieved at least five GCSEs at grades 9-6
 - If this doesn't include Maths / English Language, at least a 4 in those subjects

Additional Criteria

The more criteria you meet, the more likely you are to secure a place on the programme

- Live in a neighbourhood with a low rate of progression to higher education and/or a high level of socio-economic deprivation.
- Would be in the first generation of your family to attend university.
- Be in receipt of, or entitled to, discretionary payments/16-19 bursary at school/college
- Have been in receipt of Free School Meals whilst at secondary school.
- Be living in/have lived in local authority care, be a young carer, or are estranged/living independently from your family.

**PATHWAYS TO
BANKING & FINANCE**

**PATHWAYS TO
ENGINEERING**

PATHWAYS TO LAW



WARWICK
THE UNIVERSITY OF WARWICK

Should I apply for one of the Pathways Programmes?

- Are you interested in studying Business, Economics, Law or Engineering at University?

- Are you interested in pursuing a career in the financial, legal or engineering sectors?

WARWICK
THE UNIVERSITY OF WARWICK



Pathways programme

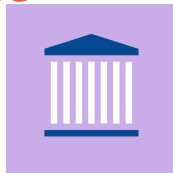
Pathways to Law

- 2 years
- 35 places
- National programme across XX universities



Pathways to Banking & Finance

- 2 years
- 35 places
- London School of Economics, University of Liverpool & University of Leicester involved



Pathways to Engineering

- 2 years
 - 35 places
 - University of Liverpool and Cardiff
- University involved



WARWICK
THE UNIVERSITY OF WARWICK

Pathways programme

A typical Year 12 programme

Autumn Term

- Programme Launch

Spring Term

- CV guidance
- Sector Day
- Opportunity to apply for work experience placements
- Academic Taster Day

Summer Term

- Personal Statement and LNAT events
- Pathways National Conference
- Opportunities to attend events at other Pathways Universities

A typical Year 13 programme

Autumn Term

- Programme Relaunch

Spring Term

- External Events
- A-level Bootcamp
- Programme Graduation

WARWICK
THE UNIVERSITY OF WARWICK

Mentoring
throughout
Year 12 with
undergraduate
students from
Warwick

What Pathways has to offer

Opportunities to apply for **work experience**



Opportunity to hear from and network with industry professionals

External events off campus



Academic Taster Lectures



WARWICK
THE UNIVERSITY OF WARWICK



Specific benefits to the Pathways programmes

- ✓ A real flavour of a specific subject
- ✓ Meeting professionals and gaining industry experience
- ✓ On successful completion of the programme you may be eligible for a reduced offer of up to 2 A-level grades lower when applying to Warwick.
- ✓ Access to Sutton Trust Online



How do I apply?

- Visit our website and click on 'apply now'
 - [Warwick.ac.uk/pathwaystolaw](https://warwick.ac.uk/pathwaystolaw)
 - [Warwick.ac.uk/pathwaystobanking](https://warwick.ac.uk/pathwaystobanking)
 - [Warwick.ac.uk/pathwaystoengineering](https://warwick.ac.uk/pathwaystoengineering)
- We will need a short personal statement & teacher reference
- Application deadlines:
 - Applications are open now
 - Applications will close 4 November
 - Exact dates will be announced on our website

What our pathways students say

- warwick.ac.uk/pathwaystolaw

“Pathways to Law has genuinely been such an amazing experience for me. I spent a day shadowing a Barrister and feel enlightened on what a Barrister actually does and whether it is suited to me. I would highly recommend this experience to anyone interested in Law!”



WARWICK
THE UNIVERSITY OF WARWICK

- [warwick.ac.uk/pathways to banking](https://warwick.ac.uk/pathways%20to%20banking)

“Pathways to Banking & Finance is an amazing experience for people who aren’t from traditional backgrounds and may not have the access needed for a career in finance. You get amazing opportunities that you wouldn’t get anywhere else.”

Cohort 16 Recruitment

Student Presentation

**REALISING
OPPORTUNITIES**
Working Together | Supporting Talent



Overview



1
programme



11 research
intensive
universities



Over 6000
university
courses



Research intensive universities

**REALISING
OPPORTUNITIES**
Working Together | Supporting Talent

Research intensive universities

The RO Partner universities are all RIUs which means they have:

- Leading academics and tutors who are experts in their field
- Vibrant learning environments where new discoveries are being made
- Cutting edge facilities thanks to investment associated with research
- Top careers guidance and strong links with business
- World-renowned reputations which are highly valued by employers

The RO Programme



Programme benefits

Programme elements

There are three compulsory elements of the programme to successfully complete RO

- Attend at least two RO events/activities (these can be the Launch and the National Student Conference)
- Pass the skills4uni online multiple-choice quiz
- Complete the RO Academic Skills Module (ASM)

Programme Benefits



Alternative offers from the RO Partners universities, which are typically two grades lower than the standard offer



Develop your skills in analysis, critical thinking, evaluation and research through taking the RO Academic Skills Module (ASM)



Experiences and support to help you make an informed choice about higher education and research-intensive universities



A Launch event with your host university to celebrate your place on the RO programme, get you started, and meet university representatives



Additional consideration when you make applications to RO Partner universities through UCAS



Online support through a variety of resources, including online sessions, speaking to the RO Ambassador, and speaking to current students at our Partner universities at events.



A virtual National Student Conference where you will get a chance to meet others from across the country taking part in RO and representatives from all the RO Partner universities



skills4uni – An online study skills challenge and multiple choice quiz which will help you develop your planning and independent research skills

Programme support



**REALISING
OPPORTUNITIES**
Working Together | Supporting Talent

Student Feedback

"The programme was more insightful than I could have ever imagined. There was help available from start to finish"

Millie, RO Student 2020 - 2022

"I would recommend joining because it will help you learn more about university and what you want to do post-18"

Ajay, RO Student 2021 - 2023

Application process

Application Process

If you'd like to apply for a place on the RO Programme then you need to:

- Check our full eligibility criteria on our website. You can check if your postcode is eligible by visiting the RO website.
- Ask the RO contact at your school/college for the Student Application Key for your school/college.
- Go to realisingopportunities.co.uk/apply to enter the Student Application Key and complete your application form.
- Ask your parent/carer to complete the online parent/carer permissions form which will be sent to their email address once you have submitted your application.

You will receive confirmation of whether you have been successful in gaining a place on RO by Monday 6 January 2025.

Key Dates and Events

25 October

**Student
Application
Deadline**

8 November
parent/carer
permission forms
and teacher
references all need
to be completed by
this date

**Monday 6
January 2025**

Application Outcome

Students will receive
confirmation of whether
they have been
successful in gaining a
place on RO by this date

**8 February
2025**

RO Launch

Students invited
to on campus
event to
kickstart the
programme and
outline what
they can expect.

TBC

**National Student
Conference**

Online event where
RO students can chat
to all partner
universities and attend
interactive sessions.

Date TBC

Academic Skills Module

Held on campus. Students attend
a subject taster lecture and take
part in study skills sessions to
prepare them for higher
education.



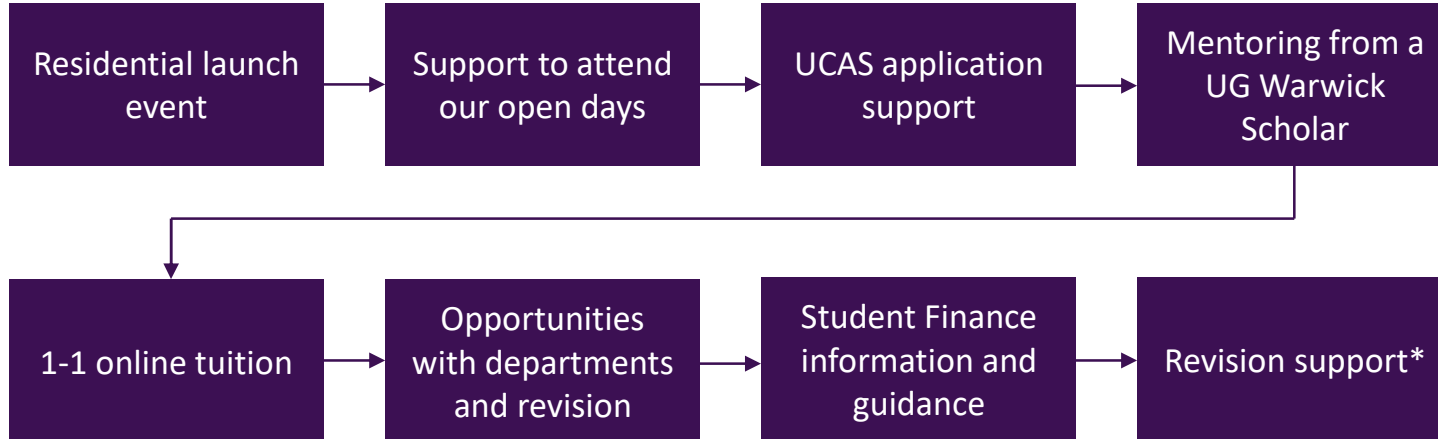
WARWICK SCHOLARS

Be part of something

What is Warwick Scholars?

- Widening access to University of Warwick
- Supporting students to reach their full academic potential
- Providing insight and experience of studying at Warwick
- Developing skills that will help students succeed
- Continued support throughout the degree programme
- Membership of the Warwick Scholars community

What is involved in Warwick Scholars?



*This is what a typical cycle of the Warwick Scholars Access programme looks like

**If you successfully pass Warwick
Scholars and come to the
University of Warwick...**

Warwick Scholars Undergraduate Programme



- Support from enrolment to graduation and beyond
- Dedicated Warwick Scholars Team contact
- Exclusive opportunities
- Additional consideration for existing opportunities
- Removing barriers
- Making the most of university

Current benefits of taking part – Warwick Scholars Access programme

- Receive support from a dedicated contact and team at the University
- Mentoring from a current undergraduate student
- Tutoring in one A Level subject

On successful completion of all elements of the Warwick Scholars programme, applicants will receive:

- A guaranteed offer of 2-4 grades below the standard admissions offer
- 50% tuition fee discount per year of study
- Access to a bursary of up to £2000 per year of study


How to apply?

Applications will open spring 2025


- Complete the online application form – including all relevant information
- You will need to provide some personal details, your GCSE results and information about your parent/carers' education
- You will need to nominate a teacher to support your application and provide your A Level predicted grades (make sure you check with them first as we can't process your application without this!)
- Finally, on the application form you will need to write a short personal statement (approx. 250 words)

What do our students say?


Warwick Scholars alumni



'Being a Warwick Scholar has opened a range of opportunities to me which have helped me enhance my CV and make my applications stand out'



'Applying to or even looking in Higher Education can be an overwhelming process and it can be difficult to even know where to start, so having a programme like Warwick Scholars with amazing committed people to guide you is invaluable'



'The free tuition helped me improve my grades before my exams last year. My tuition subject went from my worst to being my best subject once I received my grades.'

FAQs

- **Can I apply for any course at Warwick?**
YES, any UG course. We are particularly interested in applications for Arts/Humanities courses
- **If accepted onto Warwick Scholars do I still apply on UCAS?**
YES – you apply as normal via UCAS.
- **Is the offer unconditional?**
No – it is conditional on you completing the programme and getting the required grades
- **What if I get accepted onto Warwick Scholars, then decide I don't want to come to Warwick?**
You will remain on the programme until you stop engaging or no longer have an active application with Warwick e.g. don't apply, don't accept the offer, are unsuccessful or apply for a non-guaranteed course
- **What is the time commitment?**
Attendance at a Warwick Scholars residential launch, 1 hour a week for 10 weeks of tutoring, 1 evening mentor launch, 30 minutes...ish a month mentoring and an optional revision bootcamp
- **Can I apply for deferred entry?**
Yes – You can apply for deferred entry by 1 year at the discretion of the department
- **Can I reapply as a Warwick Scholar in a future UCAS cycle?**
NO – Your Warwick Scholars offer is only for one UCAS cycle.



How can I find out if I am eligible for one of these programmes?



WARWICK
THE UNIVERSITY OF WARWICK

Please visit our [website](#) to check programme criteria.



WARWICK
THE UNIVERSITY OF WARWICK

Any questions email us at
post16@Warwick.ac.uk