

**WIDENING  
PARTICIPATION  
IMPACT REPORT**

2018

**WARWICK**  
THE UNIVERSITY OF WARWICK

# CONTENTS

---

**03** / FOREWORD  
**Chris Hughes**, Pro-Vice Chancellor (Education)  
**Paul Blagburn**, Head of Widening Participation

**04** / SETTING THE SCENE

**05** / WIDENING PARTICIPATION  
IN NUMBERS

**06** / WORKING WITH SCHOOLS  
AND COLLEGES ACROSS THE UK

**08** / WIDENING PARTICIPATION AT  
THE UNIVERSITY OF WARWICK

**10** / PRE-16 ACTIVITY

**11** / POST-16 ACTIVITY

**12** / ATTAINMENT RAISING

**13** / ACADEMIC OUTREACH

**14** / WARWICK SCHOLARS PROGRAMME  
AND INTERNATIONALISATION

**16** / INTOUNIVERSITY







## FOREWORD

Professor Chris Hughes, Pro-Vice Chancellor (Education)

**W**idening participation is central to the University of Warwick's Education Strategy and overall mission. WP matters hugely to the Warwick staff and student community as part of our contribution to social inclusion nationally and regional engagement, and above all to ensure we are able to recruit and support the development of the most talented students regardless of background. As this Impact Report outlines, Warwick continues to make significant progress in WP objectives and has a dynamic set of programmes underpinning our activities. Our staff and students demonstrate tremendous commitment in working

in partnership on WP initiatives with a range of schools, charitable foundations, universities, and government agencies. But we are aware that we constantly need to stretch and further enhance our efforts in WP. Hence, as we look forward, Warwick will continue to develop the life-cycle approach to WP to support students across their entire journey from recruitment, to their studies at Warwick, and through to employment and further study.

Recent notable highlights of our WP work include our new WP Strategy, a very ambitious Access and Participation Plan, and a new and highly successful IntoUniversity Centre in Coventry. Warwick has also

launched in 2019 the new Warwick Scholars programme that is sector-leading in terms of the depth of understanding and working with the participating students from school and through all stages of University study and beyond, and the breadth of support financially and for the whole student experience, so looking to ensure outstanding outcomes.

Warwick will seek ever more ambitious objectives and consolidate its position as beacon of excellence in WP activities. Warwick's top leadership, academic and professional support staff, and students are fully committed to these goals.

Paul Blagburn, Head of Widening Participation and Outreach

**W**idening participation and social inclusion are core tenets of our institutional strategy 'Excellence with Purpose'. Our widening participation approach spans the whole student lifecycle, from sowing the seeds about university in primary schools to enhancing progression for underrepresented groups to postgraduate study. 2018 has been important both in terms of articulating our ambition for the future but also the development of new practice which will underpin our vision to be regarded as one of the UK universities with the greatest impact on social mobility.

I want to highlight some of the excellent work that has gone into this development. During 2018-19 we were proud to launch a new partnership with the national educational charity IntoUniversity, whose reputation for, and experience of, delivering impactful provision in disadvantaged

communities is recognised nationally. Our recently opened Centre in Hillfields, Coventry has already made a positive impact in the local community with unprecedented engagement from young people, teachers and parents. This is a key partnership to support young people in Coventry realise their potential and fulfil their aspirations. If you haven't been to visit the Centre it's a must.

We also launched Warwick Scholars, a new transformational social mobility programme, supporting students to get in, get on and give back. This new programme will inspire some of the brightest minds to consider and have confidence in applying and securing a place at Warwick, including supporting WP students to thrive and succeed throughout their Warwick journey. We have nearly 100 students in the first cohort from over 30 schools and colleges in the Midlands.

Finally a plug for the excellent students here at Warwick who are outstanding advocates and champions for what you can achieve at university. Our students are ambassadors, mentors, social enterprises creators, and volunteers all in the cause of social justice, leading to four of our students being recognised at the inaugural Student Social Mobility Awards in the House of Lords. But the group I really want to extend my congratulations to are the WBS students who in July were the first graduates of the pioneering WBS Foundation Year route.

I'd like to extend my thanks to all who support our work especially our students and staff, our partners locally and further afield, and our alumni, funders and donors, without your commitment and support we would not have been half as successful as we have been.

## SETTING THE SCENE

**P**romoting inclusion, diversity and internationalisation are at the core of the University's mission and purpose as a driver of social mobility. The

University is strongly committed to fulfilling this mission, and has a deep-rooted affinity to attract, support and enable individuals to fulfil their potential irrespective of background. A key part of our work are the collaborations with other universities, schools, colleges, regional partners, industry and the charitable sector to enhance social mobility.

Our work spans many geographical regions, and is informed by evidence and evaluation to ensure that we are maximising our impacts on access and social mobility on a local, regional and national level. The overall aims of our work are to enhance access to higher education for all those who aspire to study at university, regardless of background, and to ensure that the students studying at the University of Warwick are supported to fulfil their potential and make the most of their time here.

To achieve these aims, we provide support and run a range of activities which are targeted at state school educated students, students who would be the first in their family to attend university, students from low socio-economic backgrounds and students who come from neighbourhoods where there is low progression to higher education.

### What our work involves:

- Delivering pioneering outreach programmes – which are **relevant** to individual learners aged between 9 and 19, teachers, schools/colleges and employers, and which seek to **overcome barriers** to achievement, **enable progression** and ensure that individuals reach their **academic potential**.
- Providing generous financial support for undergraduates through bursaries and scholarships, including the **Warwick Scholars Programme**.
- Working collaboratively with local authorities, schools and colleges, to widen participation of the hardest-to-reach and those least likely to enter higher education, including projects supporting looked-after children.
- Engaging with our **local communities** to ensure that they, and our students, benefit from the University's presence and facilities in the region.
- Engaging in the **national and international policy arena** to provide study abroad opportunities for students, promote the economic and social value of increasing the diversity of those who participate in higher education.
- Contributing to the national widening participation and access **policy discourse**.



In 2018  
we worked with  
**396**

schools and engaged  
with **12,491** students  
including over  
**1,500** students  
on our sustained  
widening participation  
programmes

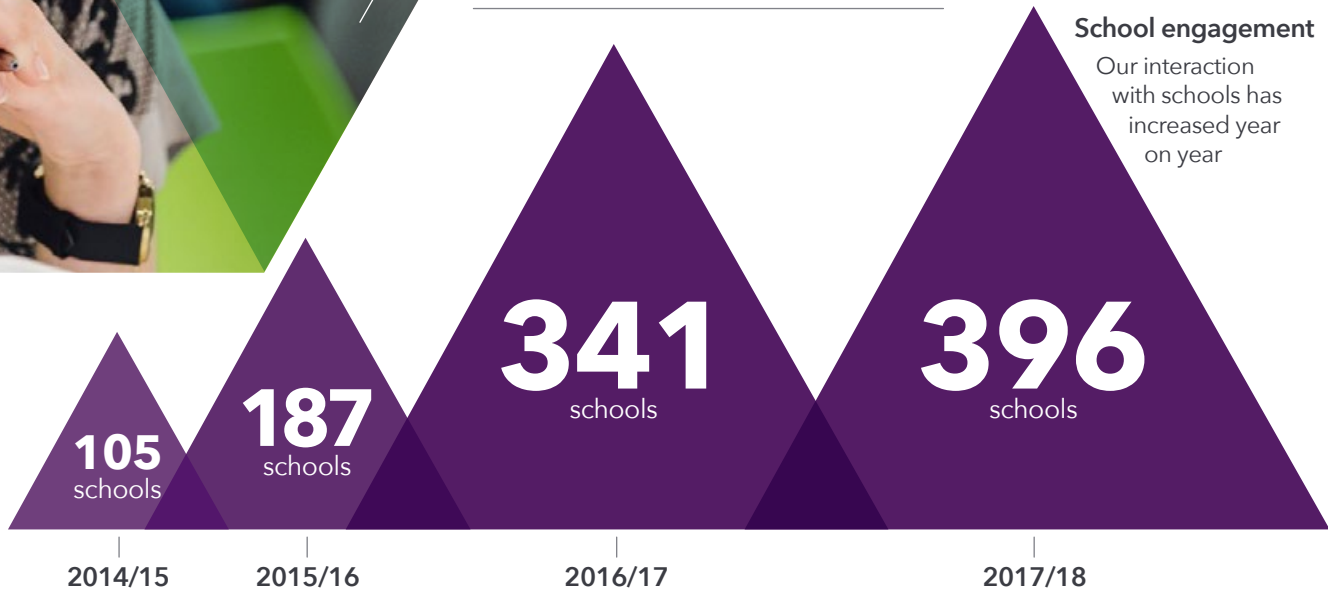
## WIDENING PARTICIPATION (WP) IN NUMBERS

The University WP team connects with a diverse range of young people, parents/carers, and teachers.

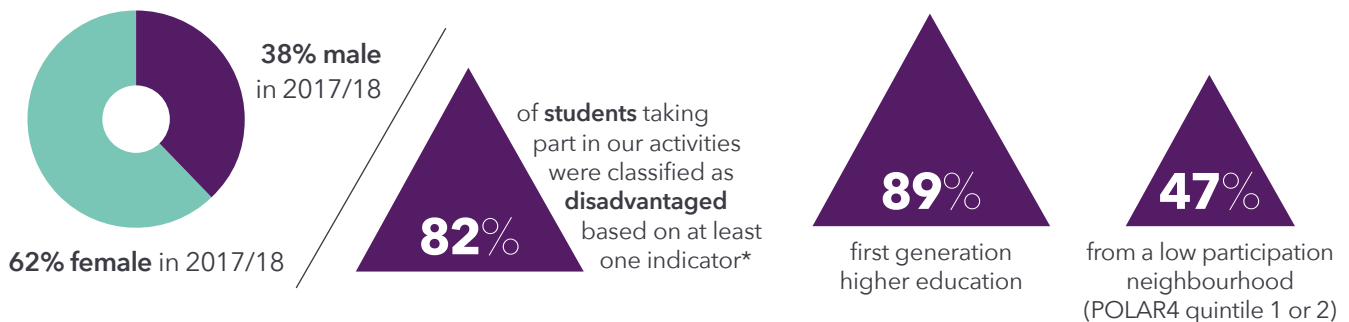
### Outreach Activity

#### School engagement

Our interaction  
with schools has  
increased year  
on year

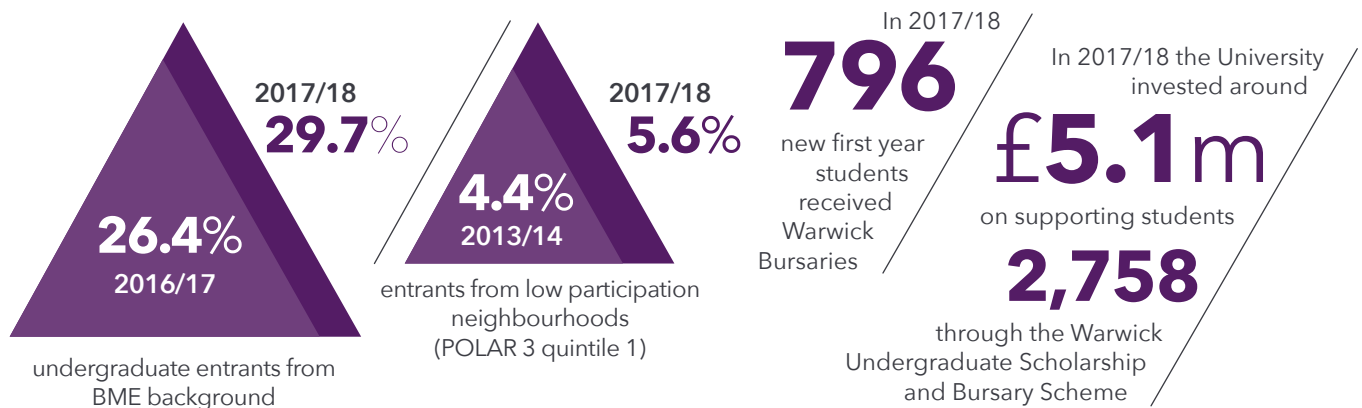


### Our students



### Access to Warwick

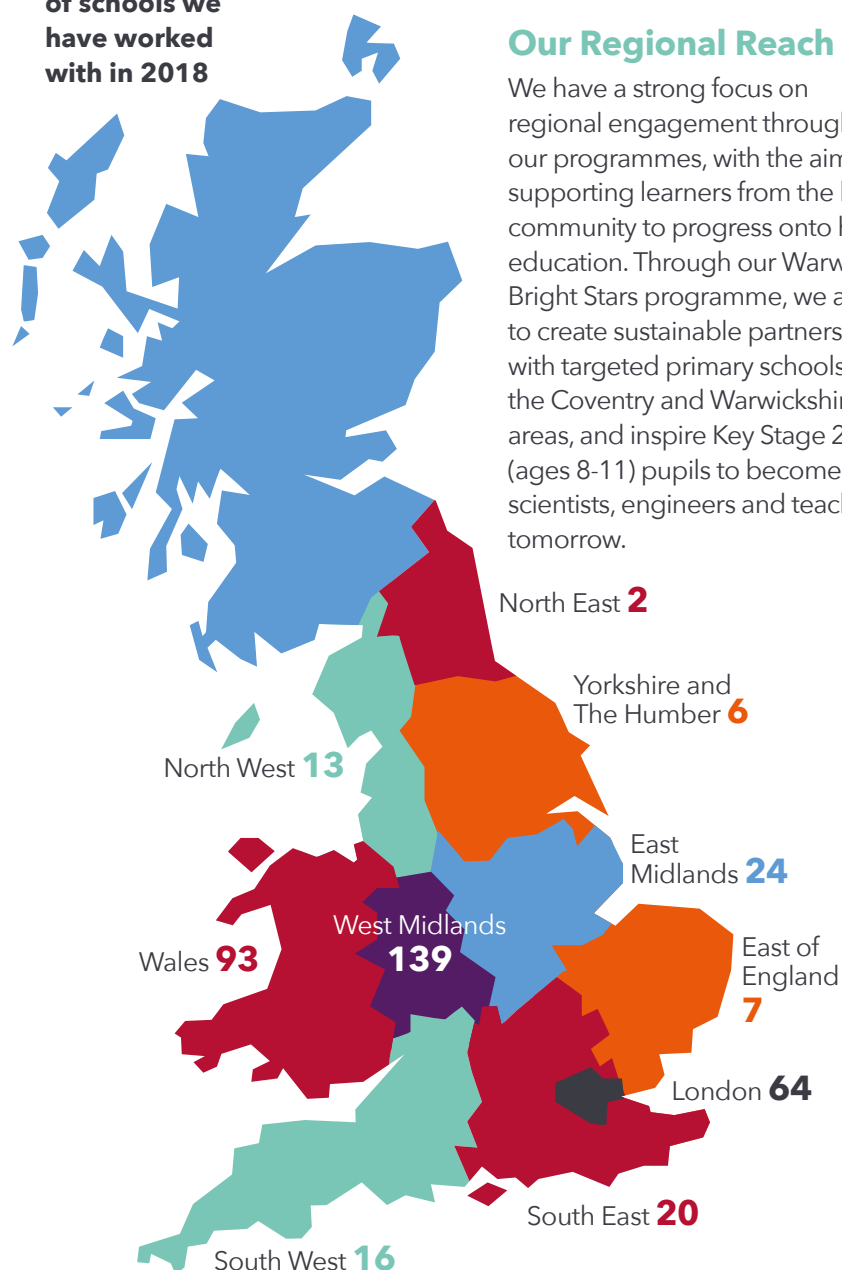
The University has made positive progress with many of its access target groups over a period of time.



\* Indicators include IMD, EST, IDACI or POLAR 4.

## WORKING WITH SCHOOLS AND COLLEGES

Location map of schools we have worked with in 2018



**O**ur relationships with schools and colleges are a fundamental element of the work we do and we recognise the value of working closely with teachers to achieve our goal of increasing access to university for widening participation students.

### Our Regional Reach

We have a strong focus on regional engagement through our programmes, with the aim of supporting learners from the local community to progress onto higher education. Through our Warwick Bright Stars programme, we aim to create sustainable partnerships with targeted primary schools in the Coventry and Warwickshire areas, and inspire Key Stage 2 (ages 8-11) pupils to become the scientists, engineers and teachers of tomorrow.

# 90%

of pupils said that their confidence has increased and that they would like to come to study at university when they are older

### Bright Stars outcomes

- In 2018, we worked with 30 schools across the West Midlands, offering a range of activities to inspire excitement and confidence in learning.
- We delivered 4 Science Campus days to 484 pupils and held 3 Arts and Engineering campus days for 176 pupils.

// They were talking about the university... They are 14 and 15 and they were having conversation about where they would like to go, whether they'd like to go to a campus university or not. //

Ms Johnstone,  
Teacher

### Our target schools are:

- Non-selective state schools
- Schools with a high % of students who would be the first in their family to attend university
- Schools with a high % of students from low socio-economic backgrounds
- Schools with a high % of students who come from neighbourhoods where there is low progression to university
- Schools performing below the national average at key stage 4 and 5



## Our Wider Geographical Reach

Many of the schools we work with also have a much broader geographic reach, as we believe that the geographic mobility of the students we work with is an important part of what we do. To this end, we work with schools from across the West Midlands and beyond, aiming to help break down some of the concerns or misconceptions students may have about attending a university further away from home.

// Personally, UniTracks has completely changed my perception of university and what I wish to pursue post-education. I owe a lot to the programme for offering me that stepping stone I would have missed out on. //

UniTracks Student

## Spotlight on

### UniTracks

- Our four year national outreach programme targeted at highly able year 10 students worked with 19 schools and 248 students from across the country.
- It supports students through the critical phases of their education journey, with subsequent years tailored to raise awareness and aspirations, enhance attainment, enable informed choices and facilitate positive transition to higher education.

### The impact

- Data indicates that a high proportion of participants apply and are ultimately successful with their application to HE. Moreover, analysis suggests that when compared to a benchmarked group with the same characteristics, UniTracks students are significantly more likely to apply to higher tariff institutions or courses (UCAS, 2017).

## Spotlight on

### Realising Opportunities (RO)

- A two year national outreach programme of 15 leading, research intensive universities from across the country aimed at promoting fair access and social mobility of highly able Year 12 students from groups underrepresented in higher education. Participants have the opportunity to visit universities and meet students from around the country.

### Stats

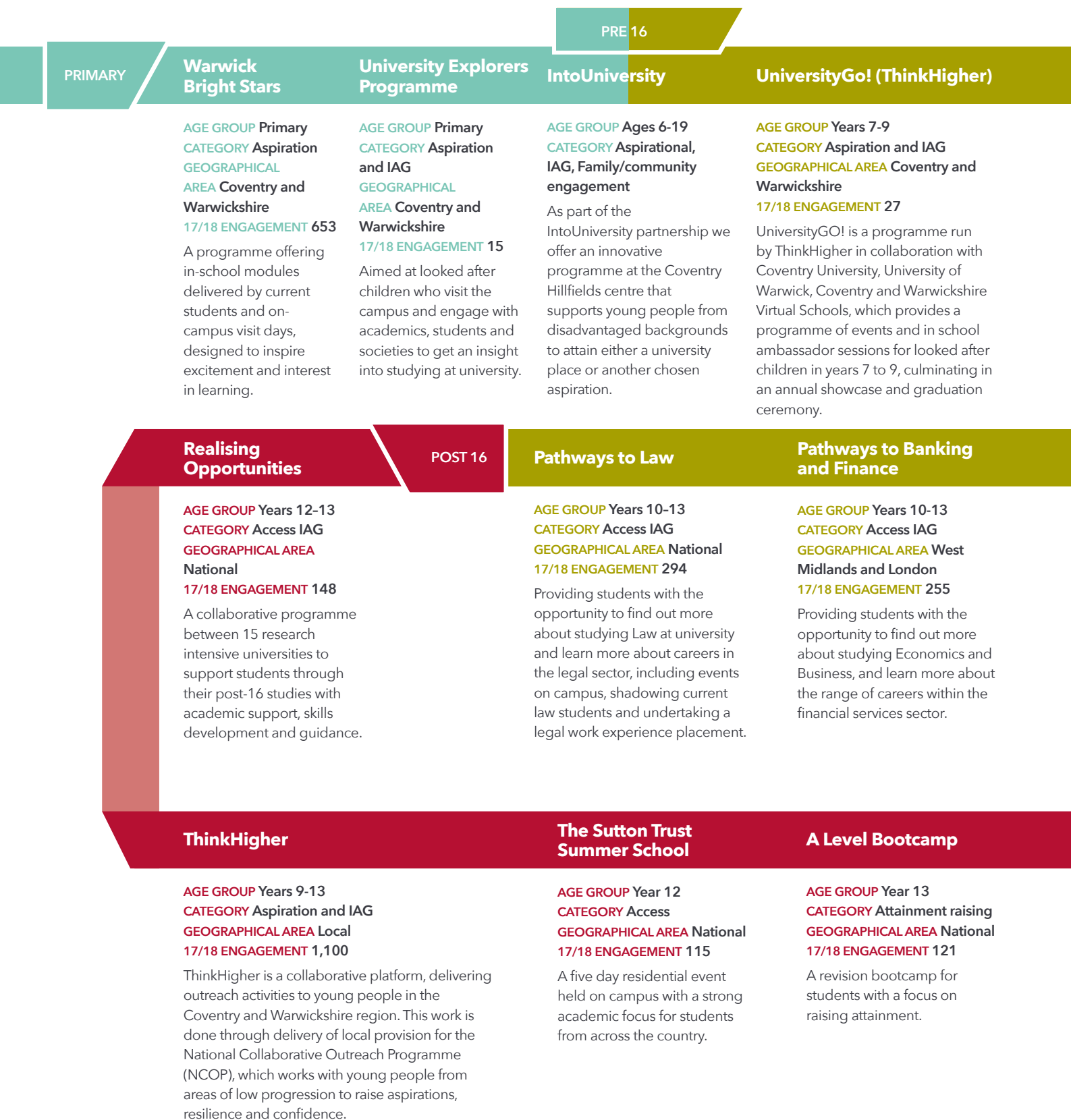
- In 2017, there were **926** active RO students.
- 84%** of RO students nationally apply to university at the end of Year 13, **double** the overall proportion of 18 year olds who apply to university.
- Around **one in three** RO students attend research intensive universities, compared with one in four in a comparator group receiving alternative outreach support.

// Realising Opportunities has really pushed me to believe in myself and apply to research intensive universities. Being able to visit different universities and try out things I wouldn't be able to do at school was an asset to add to my personal statement as well as an amazing experience. //

Realising Opportunities Student

# WIDENING PARTICIPATION AT WARWICK

This roadmap provides an overview of the University's core activity, demonstrating how we work across the whole student lifecycle.







Gradu8	Experience Warwick Partnership Programme	Warwick Sutton Scholars	Schools Warwick Visits
<p><b>AGE GROUP</b> Year 8 <b>CATEGORY</b> Summer School <b>GEOGRAPHICAL AREA</b> Coventry and Warwickshire</p> <p>A new three day residential event held on campus to motivate, inspire and raise educational aspirations of local Year 8 boys, in addition to building confidence, motivation and developing key skills such as teamwork and communication.</p>	<p><b>AGE GROUP</b> Years 7-12 <b>CATEGORY</b> Aspiration and IAG <b>GEOGRAPHICAL AREA</b> Coventry and Warwickshire</p> <p>A programme delivered in local schools offering impartial information, advice and guidance (IAG) and enabling learners to make informed decisions at key milestones in their school career.</p>	<p><b>AGE GROUP</b> Years 8-9 <b>CATEGORY</b> Aspiration and attainment raising <b>GEOGRAPHICAL AREA</b> West Midlands <b>17/18 ENGAGEMENT</b> 134</p> <p>A programme for highly able students, designed to stretch, challenge and inspire pupils academically across a range of non-traditional subjects and inspire them to consider university in the future.</p>	<p><b>AGE GROUP</b> Years 11-13 <b>CATEGORY</b> Aspiration and IAG <b>GEOGRAPHICAL AREA</b> National <b>17/18 ENGAGEMENT:</b> 368</p> <p>Our Schools Warwick visits are focused on preparing students for University. These include guided campus tours and presentations where students are provided with information into what Warwick has to offer both academically and socially.</p>
Experience Warwick Summer School	GCSE Bootcamp	UniTracks	Student Progression Team
<p><b>AGE GROUP</b> Year 10 <b>CATEGORY</b> Summer School <b>GEOGRAPHICAL AREA</b> Coventry and Warwickshire <b>17/18 ENGAGEMENT</b> 40</p> <p>A four day residential event held on campus for local students who are considering applying to university.</p>	<p><b>AGE GROUP</b> Year 11 <b>CATEGORY</b> Attainment raising <b>GEOGRAPHICAL AREA</b> National <b>17/18 ENGAGEMENT</b> 43</p> <p>A revision bootcamp for students with a focus on raising attainment.</p>	<p><b>AGE GROUP</b> Years 10-13 <b>CATEGORY</b> Aspiration Attainment raising IAG Transition <b>GEOGRAPHICAL AREA</b> National <b>17/18 ENGAGEMENT</b> 248</p> <p>A programme for highly able students, providing an insight into university life and applications, supporting academic attainment and building skills and confidence through visits to campus and online mentoring.</p>	<p><b>AGE GROUP</b> Years 9-10 <b>CATEGORY</b> Aspiration and IAG <b>GEOGRAPHICAL AREA</b> Coventry and Warwickshire <b>17/18 ENGAGEMENT</b> 174</p> <p>Current Warwick students support pupils in-school, delivering a variety of tailored and interactive sessions and acting as mentors and role models for Higher Education.</p>
ACCESS, TRANSITION & SUPPORT			
Warwick Scholars Programme	WBS Foundation Year	2+2 Degrees	
<p><b>AGE GROUP</b> Year 12 - Undergraduate students <b>CATEGORY</b> Access, retention and success</p> <p>A lifecycle approach to supporting applicants from under-represented groups in their academic attainment and progression to Warwick.</p> <p>As undergraduates, scholars receive tailored skills and career development opportunities and a generous financial support package. Applicants from all of our post 16 programmes become Warwick Scholars when they enrol as undergraduates.</p>	<p><b>AGE GROUP</b> Undergraduate students <b>CATEGORY</b> Retention and success</p> <p>An alternative entry route on to specific undergraduate programmes at the Warwick Business School.</p>	<p><b>AGE GROUP</b> Undergraduate students <b>CATEGORY</b> Access, retention and success</p> <p>Degree programme for non-traditional learners offered by the Centre for Lifelong Learning in collaboration with local Further Education Colleges.</p>	

## PRE-16 ACTIVITY

At Warwick, we believe it's important to engage with students from a young age and we run a wide range of activity for students who are under the age of 16.

### Spotlight on

#### Warwick Sutton Scholars

- Warwick Sutton Scholars is a two year programme for highly able Year 8 and 9 students who come from backgrounds that are under-represented in higher education.
- The overall aim of the programme is to support students to reach their full potential, providing them with information, advice and guidance to allow them to make informed choices at all of the key decision making points of their educational journey and encourage them to consider HE in the future.

**82%**  
of Sutton Scholars agreed or strongly agreed that they noticed an increase in their confidence

// Days will pass and turn into years but I will always remember being a Sutton Scholar. Everything was amazing and I have learnt so much. I hope someone else gets the same experiences as me as it was the best and nothing could have been better than the residential at the end. I recommend this to everyone. //

Former Warwick Sutton Scholar

**98%**  
of students agreed or strongly agreed that the Sutton Scholars programme had a positive effect on their attitude to learning

### Spotlight on

#### Student Progression Team (SPT)

- SPT is an aspiration-raising mentoring programme, which aims to inspire young people (from Years 8-10) to think about their future. University of Warwick students act as role models for Higher Education, providing a unique opportunity for school pupils to gain an insight into the next key stages of education through interactive sessions during term-time.

#### Stats

- 43%** of SPT students visited a University for the first time through the programme.
- The proportion of **students** who felt they knew enough about higher education to make a decision for the future **tripled** after the programme.

// Overall, I can't thank you enough for offering the SPT programme - I think for the students who follow it through, it really opens their eyes to the possibility of attending university. //

Teacher at Nicholas Chamberlain

## PRE- AND POST-16 SUMMER SCHOOLS

### Summer Schools

Our Summer Schools offer participants from underrepresented backgrounds a varied insight into life at a research intensive university. These include staying in our halls of residence, attending academic sessions and experiencing the social

and sports facilities on our campus. Participants will also be able to interact with our ambassadors who are current students at the University. Last year we ran five residential summer schools for students aged between 15 and 18, welcoming 241 students onto campus in total.

// You've all made a real difference to my life, you've given me confidence I never knew I had. Thank you for all the memories and for again giving me the best week of my life. //

Year 12 Summer School Student

88%

of young people who took part in our sustained programmes went to HE, this is more than double the overall proportion of 18 year olds who apply to university.

## POST-16 ACTIVITY

We run a range of activities and events for students who are aged 16 to 18. For this age group we focus on academic enrichment, attainment raising and preparation for university – including application and personal statement support.

### Spotlight on

#### Pathways to the Professions

Pathways to Law and Pathways to Banking and Finance are two national outreach programmes available to students from state schools in England who are interested in pursuing a career in law or banking/finance respectively. The programmes seek to provide students in Key Stage 4 and Key Stage 5 with the skills, experience and confidence necessary to succeed at university and beyond. They offer an opportunity for students to find out more about university life, about studying degrees in Law or Finance-related fields, and about careers in these sectors.

#### Pathways to Banking and Finance Outcomes

- In **2017/18** we welcomed the first cohort of Pathways to Banking and Finance.
- We engaged a total of **201 students** from year's 10/11 and **54 students** from year 12.

#### Pathways to Law Outcomes

- We recruited **39** Year 12 students from **19** schools onto the **Pathways to Law** programme.
- We supported **71** students on through the programme across our Year 12 and 13 cohorts.

#### The impact

- Young people who took part in **Pathways to Law** nationally (2006-2016), were **3.5 times more likely** to apply and receive an offer from a top university than their peers from similar backgrounds. They were also **four times** more likely to accept an offer from a top university.
- In 2017/18, a total of **14** **Pathways students** were admitted to the University of Warwick.

// I'm unimaginably grateful. Some of the experiences I've had, have been so amazing and made me change my entire perspective on what I can achieve in the future. I wouldn't have had the mindset or vision I have now if wasn't for the opportunities through pathways to Law. //

Pathways to Law Student

// This program really opened my eyes to finance; there's such a great variety of people who work in finance and so many pathways into it. I've met professionals from Rothschilds, Barclays, KPMG, Deutsche Bank, PwC, The Brokerage and many more. You also get help with more current issues such as CV skills, presentation skills, personal branding and self-confidence. This is the best program I've ever signed up for academically and is definitely a good way to get ahead in Finance. //

Pathways to Banking and Finance Student







## ATTAINMENT RAISING

**T**he academic attainment of the students we work with is crucial in enabling them to progress to higher education. At Warwick, we continue to focus on improving academic attainment, both at GCSE and post-16 stages, ensuring that students from targeted groups are not only inspired by the opportunities HE provides, but are equipped academically to reach their potential.

In 2018 we offered supplementary school holiday revision sessions for GCSE and A Level students across 7 subjects, including Biology, Chemistry, Physics, History, Psychology, Maths and English Language. The overall objective of these sessions was to improve learner attainment by one grade in a specific discipline but additional outcomes were noted by students, for example increased confidence in their own ability to perform well in exams and an enhanced readiness for the transition to higher education.

We are also actively engaged in a 'Closing the Gap' project with Warwickshire County Council to examine the challenges faced by disadvantaged learners and to develop intervention and support that promotes better attainment and progression outcomes for these students at all stages of their educational journey.

### Spotlight on

#### A level Bootcamp

During the Easter holidays, we welcomed over 120 Year 13 students to the University of Warwick for our free 3 day A Level Revision Bootcamp. Students had the opportunity to go through exam board specific subject content, practise exam techniques, and review their progress through assessments and extensive feedback. They received tailored advice and support for their subject and developed strategies to better prepare for their exams.

// I think I've learned a lot more here than I've learned in the past few months at college. //

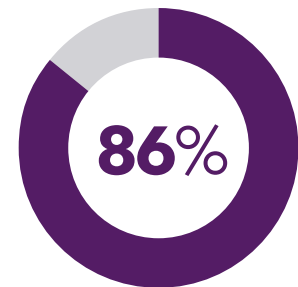
A Level Bootcamp Student

// I sat AS maths last year and I got a B overall. I feel now I should be able to push that grade up. It turns out I do know a bit more than I thought. //

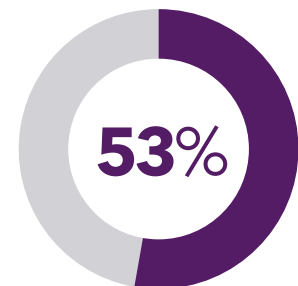
A Level Bootcamp Student

// There are several students in the room I believe will get an A\*. I hope they leave here with a greater confidence in their abilities and continue to work diligently. //

A Level Bootcamp Teacher



86% of outreach participants whose attainment outcomes were longitudinally tracked were awarded 5 A\*-C (including English and Maths) at GCSE\*\*\*



compared to the overall average for their schools

# 121

students took part in the A level revision bootcamp from 41 schools

# 43

students took part in the GCSE bootcamp from 15 schools



## ACADEMIC OUTREACH

**A**cademic departments provide invaluable contributions to the work we do to widen participation at Warwick, giving students a true insight into academic study to enable them to make informed choices. We have also set up the WP development fund which gives departments the opportunity to bid for funding to support innovative widening participation projects that demonstrate real innovation and an understanding of the barriers and enablers to progression and success at university.

### Spotlight on

#### WP Development Fund Project

##### Bridging the Gap

Bridging the Gap is a two-year long project created by the Centre for Professional Education to retain and develop higher-order literacy skills amongst a group of gifted pupils from low-income families, as they moved from Year 6 into Year 7. Pupils engaged with teaching and academic staff at both school and university levels, to ensure they were nurtured and developed as critical and creative thinkers within the subject of English.

##### Stats

- Pupils stated that they were more confident in English after participating in the programme.
- They agreed that they were challenged more than at primary school on the programme.

In 2018 we funded projects led by academic departments in the following areas:

- / Chemistry
- / Classics
- / Sociology
- / Warwick Medical School
- / Student Careers and Skills
- / The Centre for Professional Education
- / The Centre for Lifelong Learning



## WARWICK SCHOLARS

**Warwick Scholars is an established part of our lifecycle approach** to ensuring that the needs of students from widening participation backgrounds are considered at every stage of their educational journey.

In 2019 we will invite applications to Warwick Scholars from year 12 students from sixth forms and colleges across the Midlands region for the first time, increasing our capacity to engage with and support local post 16 students from a range of widening participation backgrounds. Participants will be supported to achieve the best possible grades in their post 16 studies as well as preparing them for higher level study. Additionally, those who complete the programme will benefit from a preferential contextualised offer for their chosen course of study, a 50% tuition fee discount and a £2,000 bursary.

The Warwick Scholars undergraduate programme is offered to all students who join Warwick Scholars in year 12 as well as those who have completed one of our other local or national post 16 access programmes.

*“Every year I continue to be amazed by the generosity of the donors. I cannot thank you enough for believing in me, without even knowing who I am. Your support is paving my future and I am a stronger, more independent person because of this.”*

Bianca Caravtov  
Law and Sociology, 4th year

Alongside a comprehensive matrix of opportunities linked to all aspects of student life (see Diagram 1) which Warwick Scholars are encouraged to engage with they also benefit from:

- a means-tested financial award to ensure they are able to fully participate in all aspects of student life e.g. living on campus, joining student societies, community volunteering to name but a few.
- priority access to opportunities provided through partner organisations such as upReach and a variety of student careers and skills programmes.

New elements of the Warwick Scholars Programme are being developed in collaboration with the students on the programme reflecting and responding to the changing priorities over the course of their undergraduate studies.

*“I would like to say a heartfelt thank you for your generosity and for giving students like me the opportunity to study at Warwick. The scholarship programme has been a huge part of my university experience, and I hope that future students will be able to have the experiences that I have had.”*

Grace Bend  
Modern Languages, 3rd year

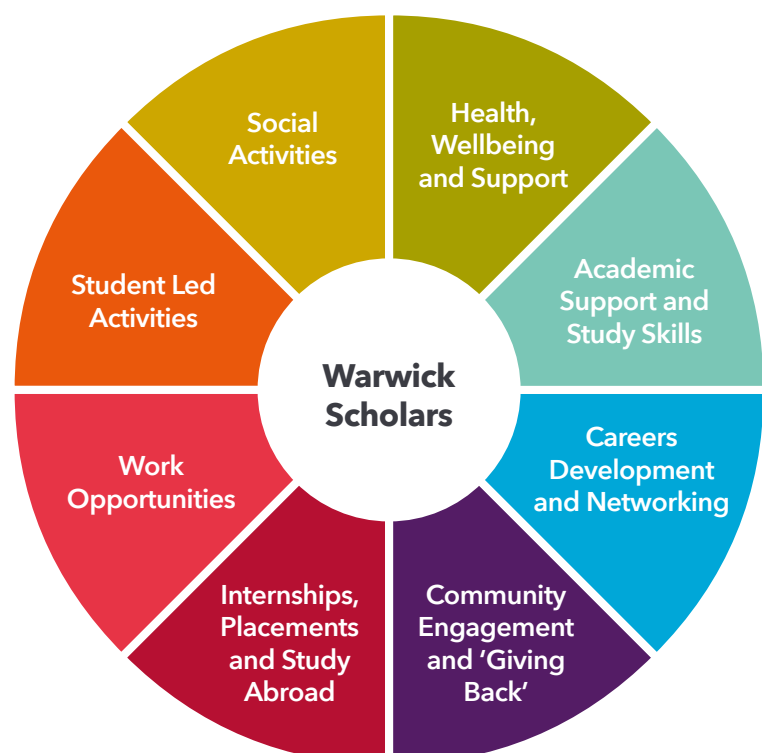


Diagram 1





## Spotlight on

### Internationalisation - The Global Leadership Experience

New for 2018/19, we are introducing a short term study abroad opportunity for first and second year undergraduates on the Warwick Scholars Programme. With funding from the Monash Warwick Alliance we are offering a select group of students the chance to travel to Kuala Lumpur, Malaysia to participate in a Global Leadership Experience alongside Monash University students from Australia and Malaysia. The programme has been co-designed in partnership with Common Purpose, a not-for-profit organisation based in the UK, to address concerns that students from widening participation backgrounds are less likely to engage in study abroad opportunities (Universities UK International, 2017).

In 2016 the European Commission's Erasmus+ impact study found that Erasmus study abroad participants have better employability prospects long-term, being half as likely to experience unemployment five years after graduation than non-mobile graduates. In recognition of this we have designed a programme which removes several of the known barriers to student mobility for students from WP backgrounds: financial, circumstantial, and experiential.



## Spotlight on

### IntoUniversity

IntoUniversity is a national educational charity providing learning opportunities for young people delivered in a community setting. This year the University has formed a partnership with the organisation to fund and open a centre in Coventry. IntoUniversity Centres are based in areas of economic deprivation, and work together with local schools to raise aspirations and improve achievement within the local community, in partnership with a local university. The Coventry Centre has been opened in the Hillfields area of the city and works with both primary and secondary schools in the locality.



We would like to thank the following partners and supporters for their contribution towards widening participation at Warwick over the last year.



The  
Brilliant  
Club



National Collaborative  
Outreach Programme



MONASH  
University



**Widening  
Participation Team**  
University House  
University of Warwick  
Kirby Corner Road  
CV4 8UW

outreach@warwick.ac.uk  
warwick.ac.uk/outreach  
024 7657 3555

 @OutreachWarwick

