

Don't worry  
about the future.  
**Change it.**

# Global Sustainable Development

Undergraduate Programmes



# Contents

|                             |    |
|-----------------------------|----|
| Are you ready for GSD?      | 3  |
| Why study GSD at Warwick?   | 4  |
| How will I study and learn? | 6  |
| Core GSD modules            | 14 |
| Optional GSD modules        | 17 |
| Study abroad                | 18 |
| Professional development    | 20 |
| Beyond the classroom        | 22 |
| Entry requirements          | 23 |



"We study, research and teach Global Sustainable Development (GSD) because it is an urgent priority for our social, economic and environmental wellbeing. Our Bachelor of Arts and Science (BASc) degrees are the first undergraduate programmes of this kind in the UK.

These courses are challenging and ambitious, dealing with contemporary problems that have local and global impact. We use a transdisciplinary, problem-based and solution-focused approach to learning, allowing you to engage with complex issues and explore creative resolutions.

Beyond our undergraduate degrees, we offer you the opportunity to further your studies with us through our postgraduate programmes in GSD.

Studying GSD is your opportunity to contest longstanding inequalities and to actively promote change. As you join us on this journey, collaboration will be key. 'Together we need to listen. And together we need to act'\*."

**Prof. Stéphanie Panichelli-Batalla,**  
Head of the School for  
Cross-faculty Studies

\* Secretary-General of the United Nations, António Guterres.



# Are you ready for **GSD?**

Global Sustainable Development is often defined as “development that meets the needs of the present without compromising the ability of future generations to meet their own needs”\*.

Our innovative undergraduate programmes challenge you to think critically about pressing questions of our time and to consider practical solutions to these problems.

In 2005, the United Nations (UN) World Summit affirmed the concept of the three pillars of sustainability – economic, social, and environmental – and our degrees are structured around these three pillars. This means that our modules provide an opportunity to actively engage with the UN Sustainable Development Goals.

As a GSD student, you will investigate global issues from a variety of perspectives. You will look at and evaluate solutions, their implications, limitations and interconnectivity, and you will have the chance to explore your own alternative solutions. Along the way, you will develop knowledge and understanding of a range of global sustainable development debates, as well as a host of valuable skills that will enhance your employability prospects and support your future as a global citizen. We will prepare you to contribute to, stimulate and lead the debate on complex issues such as; what constitutes global citizenship and good governance, sustainable resource use, and the determination of ecological limits.

You can choose to study either our single honours degree or select from our range of joint honours programmes which combine the study of GSD with that of another, more traditional academic discipline.

\* United Nations *Report of the World Commission on Environment and Development: Our Common Future*, 1987





# Why study GSD at Warwick?

## Bachelor of Arts and Science degrees

Our Bachelor of Arts and Science (BASc) degrees take a transdisciplinary approach that equips you to pursue careers in a variety of fields using skills that range across social sciences, sciences, and the arts.

## Transdisciplinary approach

The world faces unprecedented challenges with widespread human and ecological ramifications. The consequences of which will occur across social equity, individual wellbeing, cultural cohesion, migration, governance, environmental change, and the production, distribution and use of food, material and resources.

These challenges are interconnected and cannot be solved in isolation. All of our degrees offer a transdisciplinary approach which will allow you to confront issues from a diverse array of perspectives in order to identify innovative solutions.

For more information on how you will learn see [page 6](#).

## Passionate academics

Our staff are expert academics and researchers drawn from disciplines across the humanities, social sciences and scientific fields, including politics, economics, history, natural sciences, sociology and many other fields of enquiry. All are passionate about defining, investigating and exploring solutions to those issues which are of vital importance to the social, economic and environmental wellbeing of society.



**“We are empowering our students to engage actively with the Sustainable Development Agenda to help us flip the narrative in global change from negative to positive.”**

**Dr. Jessica Savage,**  
Head of Global Sustainable  
Development and Deputy Head of the  
School for Cross-faculty Studies



## Unique study abroad programme

We will support you if you want to extend your learning and broaden your perspective by studying overseas. GSD students have the opportunity to spend part of their second year studying abroad at our partner institutions Monash University (home to the Monash Sustainable Development Institute) and Pompeu Fabra University.

For more information on studying abroad see [page 18](#).

## Employability skills

We acknowledge the importance of employability skills and we have embedded them as part of your studies. Our degrees have been designed to develop the core professional skills that employers seek in graduates. These skills are embedded in our course content, teaching approach, and assessments. You will also have the opportunity to develop your professional skills through our unique certificates and engage in work placements.

For more information on professional development see [page 20](#).

## Institute for Global Sustainable Development

The School for Cross-faculty Studies is home to Warwick's Institute for Global Sustainable Development (IGSD).

IGSD provides a focal point for Warwick's sustainable development research, contributing towards the UN Sustainable Development Goals (SDGs) but still challenging them. IGSD's vision is to be at the forefront of knowledge creation, enabling transformations towards a more sustainable, prosperous, healthier and just world for all. It undertakes innovative transdisciplinary research to tackle global challenges and enable changes in human-environment interactions.

By establishing equitable partnerships with researchers and non-scientific stakeholders across the Global North and the Global South, IGSD works on challenge-led research projects that cross disciplinary boundaries, and achieve impact towards the SDGs.



## 5<sup>th</sup> most targeted University in the UK by the top 100 graduate employers

*(The Graduate Market in 2023, High Fliers Research Ltd.)*



## 96.3% overall satisfaction for GSD students (single honours)

*(The National Student Survey 2022)*



## Warwick is 64<sup>th</sup> in the World University Rankings

*(QS World University Rankings 2023)*



# How will I study & learn?

Whether you study our single honours degree or one of our joint honours programmes, you will gain a thorough grounding of the principles of global sustainable development. You will also have the flexibility to study the areas most interesting to you.

Practical activities are at the heart of the way we examine issues, so there will be plenty of opportunities for you to work with other GSD students to think about how problems within the field of sustainable development could be tackled.

"GSD is unique compared to all other courses as it has some of the most passionate lecturers and encourages its students to not only think critically but also practically about viable solutions to sustainable development."

**Natalya**, Politics, International Studies and GSD graduate

## It is not all about exams and essays...

Of course, exams and essays can be useful assessment tools for testing knowledge, but in the workplace, people don't often get their point across by means of an academic essay.

We want to prepare you to be effective and successful professionals, so we assess your progress and understanding using different methods designed to correspond with the types of outputs that you will be expected to produce in the work environment. For example, you will produce research papers, reports, policy briefings, posters, portfolios and presentations.

You will contribute to group projects, as well as have the opportunity to present your work in a public forum such as the British Conference of Undergraduate Research or the International Conference of Undergraduate Research.

## Support

### Personal tutor

You will be assigned a personal tutor who you can talk to about any issues or queries you might have about your academic life and student journey. You will meet your personal tutor regularly and you will also be able to contact your personal tutor at any point should you need to.

### Office hours

Our academics allocate several hours a week just so you can arrange to meet with them to discuss your studies.


### Director of Student Experience

GSD has a Director of Student Experience who is dedicated to helping you get the most out of your time at Warwick and reach your potential in your degree.

### Undergraduate Office

Our Undergraduate Office is open throughout the week during term time to answer your general queries.





## Should richer countries help vaccinate poorer countries during a pandemic?

### Single honours degree

Our flexible single honours course offers you a unique transdisciplinary and international learning experience in which you will examine, in depth, the economic, social, environmental and governance factors that shape our understanding of GSD. Using a range of methods of enquiry from the social sciences, humanities, and sciences you will explore pressing problems such as food security and inequality. You will engage with the concepts of social justice, ethics, and wellbeing to assess how they relate to ecological and economic factors.

The course aims to give you in-depth knowledge of key challenges in sustainable development alongside how they are being and could be tackled; fostering the acquisition of a future-facing outlook in which you think about the consequences of actions, and how systems and societies can be adapted to ensure sustainability. The core modules in each year of the course are complemented by optional modules that allow you to focus on the issues of sustainable development of most interest to you, preparing you to make significant, meaningful interventions.

### Joint honours degrees

If you choose to study one of our joint honours degrees, your teaching will be **equally split** between modules in GSD and modules from your chosen discipline. This structure ensures that you are taught the key principles and theories that underpin your studies and that you are able to apply them to problems of contemporary significance. You will gain both depth of understanding and knowledge, and practical experience in tackling issues - ideal preparation for a global change maker.

#### You can study GSD alongside one of the following disciplines:

- ▶ Business Studies
- ▶ Design Studies
- ▶ Economic Studies
- ▶ Education Studies
- ▶ Hispanic Studies
- ▶ History
- ▶ Life Sciences
- ▶ Philosophy
- ▶ Politics and International Studies
- ▶ Psychology
- ▶ Sociology
- ▶ Theatre and Performance Studies



## Year One

In your first year, regardless of the course you choose, your core modules will teach you the principles of GSD as identified by the UN and will give you the chance to see how those principles apply to a real case affecting a local community through a research project.

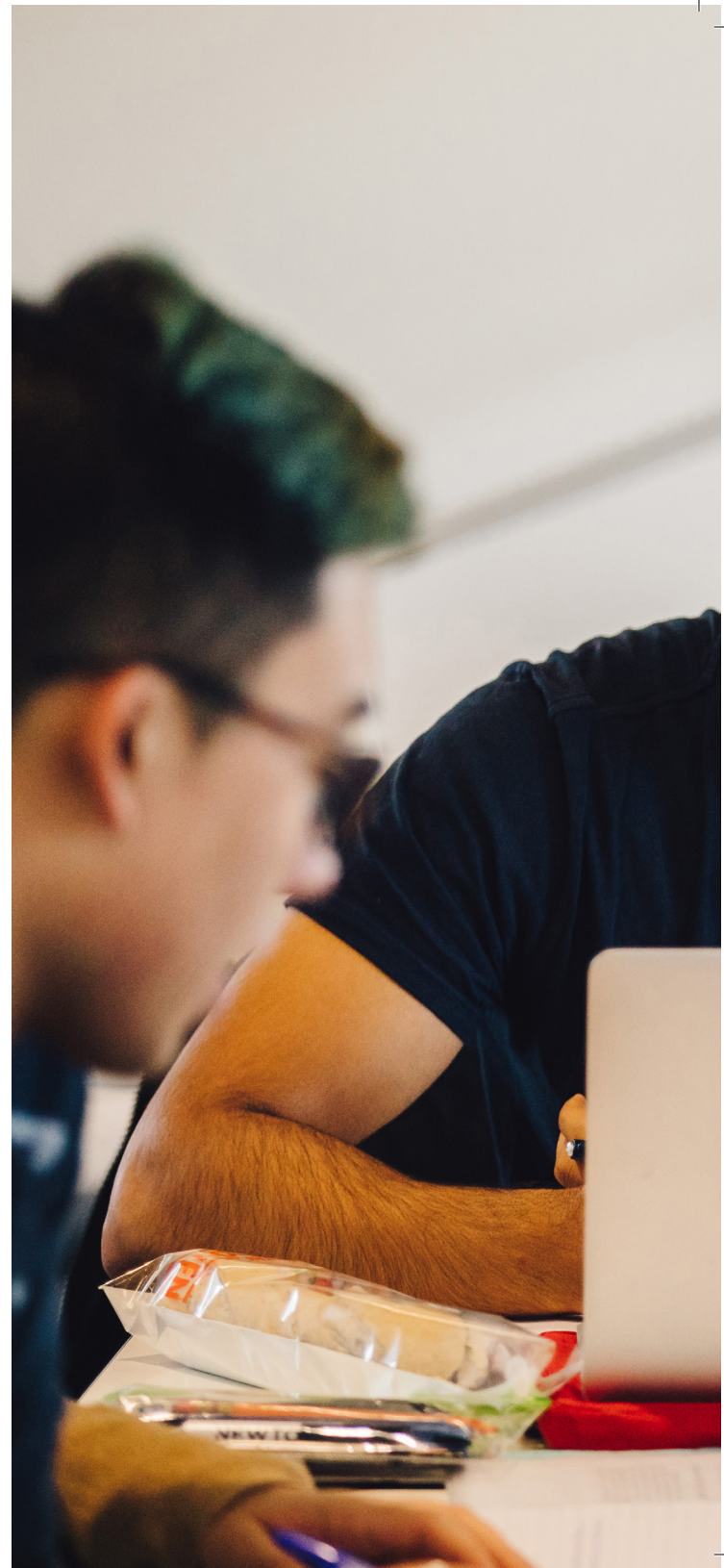
The research which you will undertake won't just be desk-based. You will be out in the local community speaking to people and using research techniques employed by the professionals. So, you will learn the theories and then have an opportunity to put your learning into practice.

This is a key feature of the way in which our courses are taught and it means that you are developing research skills right from the start of your degree. These skills are going to stand you in good stead when it comes to the rest of the course and your life beyond Warwick.

## Year Two

In your second year you are able to start investigating the problems that concern you most as an aspiring global citizen, with the knowledge to execute meaningful interventions. You will choose from three GSD modules focusing on food, health, or inequalities. These are complex topics affecting societies across the world which the UN has pledged to address. You will learn and use a range of methods from the sciences, social sciences, and humanities to delve into the relationships between each and the challenge of sustainable development.

In your second year you can also study other issues of sustainable development as you will be able to pursue modules offered both by GSD and other academic departments around the University which are investigating global issues.







## Final Year

In your final year you will have the opportunity to bring together everything that you have learned about GSD in a dissertation. In your dissertation you will present your knowledge, ideas and conclusions on an issue or question which is of particular concern or interest to you - a problem that you want to address. You will be supported in your research activity by supervisors with expertise on your chosen topic.

# Joint honours degrees

## GSD and Business Studies

On this course you will combine technical and enterprising expertise with an understanding of social and environmental concerns. You will learn at the internationally renowned Warwick Business School (WBS). With no core WBS requirements, you are free to curate a business education around your own specific interests.

You might explore Employment Relations, Global Risks, and Equality and Diversity in Organisations. At the same time, you could be learning about social enterprises that put people and the planet first. Graduates from this degree will be among those few fit to lead the possibilities of sustainable business.

"Studying business along with GSD makes you aware of the crucial importance of incorporating the notion of sustainability in contemporary companies. It makes you understand that reforming businesses is the starting point for reforming the world."

**Feriel,**  
GSD and Business Studies graduate

## Design Studies and GSD

Modules from our brand new Design studies course will challenge you to think critically about important problems such as human rights, environmental impact, technological and digital advancement whilst considering practical, design-led solutions.

On this unique and exciting new course, you will explore current issues of global significance from a variety of disciplinary perspectives and examine how positive change can be achieved through the application of the theory and practice of design. This is a future facing programme which aims to develop a new generation of designers as holistic, strategic, and agile interdisciplinary practitioners.

## Economic Studies and GSD

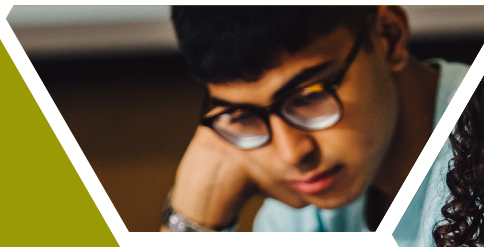
Economics modules in your first and second years will develop your understanding of the fundamental concepts in micro- and macro-economic analysis. They will also introduce you to analytical skills and statistical techniques, including the use of statistical computer packages, and consider how these can be applied to real-world economic problems.

In your final year, core Economics modules will explore key economic and policy issues facing developing countries, including poverty,

malnutrition, international trade, gender inequality, healthcare and education. You can also choose modules from within the Economics Department that focus on issues that will inform your research for the final-year GSD dissertation.

"Both Economics and GSD are concerned with wellbeing and allocation of finite resources. On the one hand, economic policy is at the core of sustainable development solutions. On the other hand, economic development has long been pursued without considerations of social justice and environmental sustainability. Undoubtedly, the combination of Economics and GSD allows you to critically consider this complicated relationship, while providing you with a set of highly complementary skills, ranging from advanced quantitative and statistical techniques to critical thinking and analytical skills."

**Dr Marta Guerriero,**  
Associate Professor in GSD





## Education Studies and GSD

First-year core modules in Education Studies will introduce you to the contested nature of education, state-of-the-art theorising within the field, and creative approaches to teaching and learning. Second-year modules in Education Studies will develop a deeper understanding of the role of education within society. You will have the unique opportunity to undertake an integrated work placement module, allowing you to explore career paths and apply your learning. In your final year, you will focus on either society, culture, creativity or learning and you will take core Education Studies modules that develop the theoretical and research-based underpinnings of the subject.

"Doing a GSD Education degree is not just an academic pursuit; it's a commitment to shaping a sustainable future, an opportunity to gain a comprehensive understanding of innovative solutions to global challenges. The degree is an amalgamation of knowledge and responsibility, offering theoretical and practical tools to become change-makers."

**Dr Camilla Audia,**  
Assistant professor of Education Studies and GSD

## Hispanic Studies and GSD

Hispanic Studies modules in your first year will help you develop your knowledge of the Spanish language either from a beginners' level or from a more advanced level (GCSE, AS or A level). You will also learn about Hispanic cultures and societies through the Hispanic cultural modules. In your second and final year, your Hispanic Studies modules will be divided between core language modules and a selection of optional Hispanic cultural modules, where you will be able to develop in-depth knowledge in topics of your interest about the Spanish-speaking world, while at the same time acquiring excellent communication and research skills. Cultural module choices available to our current students include topics such as film, human rights, and nature in Hispanic countries.

"Studying Hispanic Studies and GSD has given me the chance to integrate two subjects I am passionate about. I have been able to develop my Spanish language skills and my understanding of Hispanic cultures as well as implementing the lessons I have learned into my GSD studies. The interdisciplinary approaches through which the GSD modules are taught have enabled me to undertake unique projects and develop my independent thinking which has opened up a wide range of opportunities for me throughout my time as a GSD student."

**Axelle,**  
Hispanic Studies and GSD graduate

## History and GSD

First-year core History modules introduce you to a variety of approaches to the study of history as you consider the subject from the viewpoints of culture, identity and the environment. You will develop your historical knowledge of the modern world from the mid 18<sup>th</sup> century and explore the practice of history through the research process – from primary sources through to the presentation, dissemination, manipulation and consumption of historical interpretation. In your second year, you can choose History module options according to those aspects of history that interest you most, including at least one Early Modern module. This continues into your final year, when you will have at least some focus on the Early Modern but also choose optional History modules from a wide range of topics, including the history of gender and food.

"History and GSD has combined my interests in our world's past, present, and future. This allows me to explore and understand how culture, science, politics, money, and our ever-changing environment shapes the decisions we make. By studying a joint degree, I can better understand topics such as the global economic situation by drawing on the history of colonialism and slavery, and what impact these chains of events are having on global sustainability."

**Emily,**  
History and GSD student

## Life Sciences and GSD

Your Life Sciences modules will provide you with crucial knowledge of biological theories and ecological processes that underpin our natural world. You will be introduced to evolution, genetics, population studies, and a range of theoretical frameworks. You will also take part in hands-on workshops, innovative labs, and thought-provoking field trips. As the course progresses, you will have the opportunity to choose either a Biological Sciences or Ecology route, allowing you to study modules tailored to your interests and career aspirations. Current students are taking options such as Environmental Science and Management, Exploiting Innovation in Biology, Principles of Development, and Science Communication. There are also opportunities to get involved with key research projects.

"Studying Life Sciences and GSD is a truly unique opportunity. This one-of-a-kind course empowers students to bridge the gap between the sciences and the interdisciplinary global sustainability agenda. Combining in-depth knowledge about how the world works with the principles of sustainable development, we encourage students to dream of a brighter future and provide them with the intellectual tools to make it a reality."

**Dr Jess Savage,**  
Associate Professor in GSD

## Philosophy and GSD

A first-year introductory Philosophy module equips learners to reflect on issues of global sustainable development by introducing ideas and arguments proposed by some of the world's most significant philosophers. This experience sets out the intellectual landscape of the discipline and outlines key issues at its frontiers. Second-year Philosophy modules develop a range of analytical skills and you will consider how these can be applied to our lived reality. Throughout your degree, you will also select optional Philosophy modules, focusing on the areas or issues that you want to explore more fully. Optional modules available to current students include Ethics, the Philosophy of Nature and the Philosophy of Terrorism and Religion - all highly relevant to the GSD half of your degree.

"Marcus Aurelius wrote that 'the soul becomes dyed with the colour of its thoughts'. This defines what it means to study Philosophy and GSD. Philosophy is the foundation of everything we do; if we do not first understand how to think, we cannot understand how to act. The more we learn of ourselves, others, and the universe, the more connections our souls can make; this interconnectedness is perhaps how we might learn to live beyond ourselves."

**Elizabeth,**  
Philosophy and GSD graduate

## Politics, International Studies and GSD

First-year core Politics and International Studies (PAIS) modules introduce the main issues, theoretical perspectives, processes and concepts in the study of politics. Second-year core PAIS modules examine the political philosophy of important European writers from 1640 onwards. The final-year core PAIS module analyses and assesses arguments in political philosophy, relating those arguments to contemporary issues.

In your second and third years you will also study optional PAIS modules, allowing you to examine specialised topics in depth. Currently, these include Politics of International Development, International Security, and Gender and Development.

"I have found PAIS and GSD to interlink so much, and any time I feel like I'm struggling with one side, the reading from the other somehow always links and helps me with my understanding of what I am learning. I feel really lucky to work with students from a broad range of disciplines. In seminars we constantly critically analyse global challenges and solutions from different perspectives, which for far too long have been separate discourses."

**Hollie,**  
PAIS and GSD graduate



## Psychology and GSD

An understanding of how and why people act and react in the way that they do, gleaned through a study of Psychology, can support the change in human attitude and action that is required in order to positively impact the planet and secure its future survival. First-year Psychology modules provide a general introduction to the subject of Psychology, its core topics and its history, which is designed to support your future study of the discipline. You will then explore some of these issues in more depth through your choice of second-year Psychology modules. For current students, these options include Language and Cognition; Psychobiology; Social Psychology; and Perception, Planning and Action. In your third year, you will complete your study of the subject by choosing Psychology modules that focus on contemporary topics, which may enrich the focus of your dissertation.

"We are the vital key to understanding how to deal with all other dimensions affecting the success of humanity. It was through learning about the development of the human psyche during childhood and adolescence, how to influence human behaviours using psychological techniques, and how these are all witnessed in real-life situations that this understanding was enriched. Being able to see GSD issues through a psychological lens has proved invaluable to me, not only academically, but personally in my own quest to live more sustainably."

**Anna,**  
Psychology and GSD graduate

## Sociology and GSD

Your first-year modules will build a foundation of analytical, professional, and research-based skills across both disciplines. In your second-year modules, you will be taught about Sociology as an academic discipline and approaches taken by practitioners, as well as different ways societies have been organised. You will learn how to analyse datasets and gain practical skills for planning and carrying out social research. In your final year, you will have a choice of Sociology modules, some of which currently include Feminist Pedagogy and Activism; State Crime, Human Rights and Global Wrongs; Postcolonial Theory and Politics; and Surveillance and Security: Race, Gender, and Class.

"Sociology - the study of society - is well-placed in accompanying GSD. Often, global sustainable development is prioritised in its economic or environmental dimensions without due attention being paid to social questions such as: 'might the organisation of society itself be unsustainable?' Studying Sociology and GSD together helps put you at the forefront of how to better address these and other neglected questions."

**Romain Chenet,**  
Senior Teaching Fellow in GSD

## Theatre and Performance Studies and GSD

First-year Theatre and Performance Studies modules will introduce you to the key issues and theoretical concepts underpinning the study of theatre and performance. You will also explore how these intersect with politics and culture, and look at the process of taking text from page to performance. In your second and third years, you can choose from a variety of modules offered by Theatre and Performance Studies to explore those issues that interest you most. Your third-year choices can be tailored to feed into your chosen dissertation topic. Second and third year options available to current students include Writing for Theatre and Performance, Theatre and National Identities, and Performing Gender and Sexuality.

"Whenever I tell anyone that I study Theatre and GSD, there is always this sense of incredulity, followed by a pleasant surprise that it exists. Having such a unique combination has allowed me to view the world from different perspectives, but more importantly apply different approaches to timely issues. It is also this that encourages me to push for more creative and innovative solutions that affect a wider range of people."

**Angelo,**  
Theatre and Performance  
Studies and GSD graduate



# Core GSD modules

## Year One

### Economic Principles of GSD

Why and how can economics address issues of global sustainable development? In this module, you will learn about the relationship between economic activity, social inclusion and environmental sustainability, and critically analyse the economic theories that underpin sustainable development policy interventions and how those theories impact upon policy design.

By the end of this module, you will be able to apply fundamental economic principles to the analysis of global sustainable development problems. You will also understand how economic policies intended to address those problems are developed and you will be able to offer informed critiques of such policies.

### Social Principles of GSD

This module examines concepts that enable you to analyse and interpret social and political issues related to global sustainable development. You will learn to understand and evaluate pressing social and political dimensions of sustainability at national and international levels.

By the end of this module, you will be able to offer a well-informed and evidence-based explanation of the key challenges facing our world, focusing on the social and political dimensions. You will also be able to explain global social problems caused by forms of economic development, reflect critically on why some countries have developed while others have stayed poor, and consider challenges in 'leaving no one behind'.

### Environmental Principles of GSD

This module focuses on the natural science of the world's most pressing environmental issues. We will cover well-known topics like climate change and biodiversity loss and less prominent problems like biochemical flows. You will evaluate existing governance and management efforts and develop innovative responses of your own. You will learn how to write a policy briefing and create a policy briefing paper and policy pitch, aimed at a specific decision-making audience. By the end of this module, you will possess key knowledge of environmental principles and skills valuable for creating meaningful change in the world of work, governance and/or activism.

### GSD Project

This is an exciting, innovative, and practical module. It is designed to give you research and analysis skills and to enable you to apply the theories from your other first-year core modules. You will learn how to research sustainability by designing and developing a group project on the topic of sustainable transport, under the guidance of an academic supervisor. Staff from across the GSD Department with expertise in transport policy as well as research methods teach this module.





## Year Two

### Security, Sovereignty and Sustainability in the Global Food System

(Optional core module)

Goal 2 of the 2030 Agenda for Sustainable Development aims to end hunger, end all forms of malnutrition, and ensure sustainable food production systems. However, the world population will likely increase to nearly 10 billion people by 2050. After decades of positive change, the incidence of malnourishment is again on the rise, global stocks of key food are contracting and it is currently more expensive to buy food than for most of our planet's modern history.

This module addresses these significant challenges by encouraging students to adopt a 'food systems approach' in responding to the imperative agendas of food security, sovereignty and sustainability. The module is taught in collaboration with researchers from across various disciplines at Warwick, especially those involved in the University's Global Research Priority on Food.

### Health and Sustainable Development

(Optional core module)

Viable and equitable solutions in health and sustainable development require interdisciplinary and critical thinking. The first part of the module will introduce you to fundamental concepts of global health governance and health systems, and acquaint you with key global health priorities like drug resistance and mental health from the perspective of global sustainable development.

The second part of the module will focus on issues that relate to policies and behavioural change, and are also applicable beyond health, for example in areas like education or technology transfer.

Alongside the module content, you will have the opportunity to develop your analytical skills to make independent, critical, and constructive contributions to Health and Sustainable Development.

### Inequalities and Sustainable Development: Inclusion and Dignity for All

(Optional core module)

This module focuses on how inequalities shape our societies, economies, environments and politics.

Starting with the question 'Does inequality matter?', you will critically reflect on the UN's decision to integrate inequalities into the Sustainable Development Agenda. You will then explore six different dimensions of inequalities (work, politics, environmental justice, societal discrimination, automation and globalisation, empowerment) and gain an understanding of the complexities of these problems.

Finally, you will appreciate the challenges faced by today's policy makers who aim to address issues of inequalities while taking into consideration all three pillars of sustainable development.



**Why is sustainability important to our wellbeing?**



## Final Year

### Dissertation

In this module you will bring together all of your learning and experiences on the course - the theoretical concepts and principles and your practical know-how - in order to address a specific sustainable development problem of your own choosing. This will be a problem that concerns you most and which you would like to tackle.

You will be supported by an academic supervisor to devise a suitable project and to undertake research to explore the issue, taking a transdisciplinary approach to your investigation in order to produce an original research output. This may be a concept paper, a practical project, a film production, a long essay, an advocacy campaign...use your creativity!

You will design a strategy for disseminating your findings (for example at a conference presentation, via online publication or an article in a journal, or at a public meeting that you have arranged). This provides you with an opportunity to have your voice heard in a forum where it matters and could have lasting impact.

**"My favourite aspect of the GSD course at Warwick is the final-year dissertation. This is an opportunity for students to intervene in a genuine real-life issue and the best thing about this is that you can do so in a creative way."**

---

**Rhys,**  
Single honours GSD graduate



# Optional GSD modules

We are continually updating our list of optional modules to reflect the latest research and expertise within our department. Please visit [warwick.ac.uk/gsd](http://warwick.ac.uk/gsd) for the most up-to-date list of options. For current students, a selection of our optional modules include:



Credit: Katharine McEnery, Life Sciences and GSD graduate, winner of the GSD Student Photo Competition 2017-18

## Realising Sustainable Development

This module aims to stimulate your creativity, vision and flexibility by giving you the chance to engage in small-scale, community-based projects, within the University campus and the local area.

You will be putting into practice the theories, techniques and principles that you have learned so far, working alongside a range of stakeholders including professionals, volunteers and government officials to diagnose problems and generate ideas for more sustainable approaches.

You will gain an appreciation of the complexities inherent in implementation, including the diversity of perspectives on key issues and thus potential trade-offs necessary in order to effect change. Your work on the project is supported by a series of workshops that are led by practitioners. This module provides an ideal opportunity to experience what it might be like to work as a sustainability professional.

## Managing Natural Resources

Oil. Fish. Bananas. Everything about the way our society has evolved and operates relates to the way in which we use such natural resources. While there are myriad global policies and targets to help mitigate the damage caused by humans, these policies are designed to fundamentally alter the way humans interact with their environment.

This module investigates what the different relationships between humans and their environment look like. Tackling different case studies focused on various resources and across global regions, you will investigate how policies manifest on the ground, and you will critically explore future pathways for natural resource management.

## Surviving the Apocalypse

In this highly topical module, we explore the challenges linked to contemporary social, economic and political disorder, and ecosystems breakdown. You will think through contemporary crises in terms of the possibilities and limitations of different responses, and collaboratively explore opportunities for new ideas that address global issues.

# Study abroad

Your university experience could be a truly global one by studying overseas. You can access study abroad opportunities via two routes:

## 1. Study abroad for part of your second year

Spend the second and third terms of your second year studying at either Monash University (home to the Monash Sustainable Development Institute) or Universitat Pompeu Fabra (UPF) in Barcelona.

Your time at Monash or UPF will be part of your degree, so you will graduate in three years. You will therefore gain the benefits of studying abroad without extending the length of your course. Your academic achievements abroad will count towards your degree awarded by Warwick, meaning your studies will be both rewarding and rewarded! This is a unique opportunity exclusively available to you as a GSD student.

You will have the chance to enhance your global outlook as you experience Monash's or UPF's approach towards issues of global sustainable development. You will learn to appreciate that different corners of the world have different concerns and priorities for sustainable development, as well as different ways of tackling issues. You will broaden your learning in new and exciting ways by taking modules beyond the ones offered at Warwick.

"Living abroad has certainly benefited my attitudes, mostly due to the interaction with very international people. Although both Warwick and Monash attract many international students, very few students at Monash are European. Instead, the great majority come from India, China, Canada, and the US. This leads to the interaction with very different cultures and points of view, and the desire to understand these more profoundly."

**Josefa,**  
GSD and Business Studies graduate

We continually see our students immersing themselves in their Monash experience. GSD alumni, Hannah and Liam, studied at Monash and joined **Monash SEED**, a society empowering students to create a positive social impact. On returning to Warwick, Hannah and Liam co-founded **Warwick SEED**, a society promoting social impact careers and global collaboration. In 2019 Hannah and Liam were jointly awarded Warwick's Outstanding Student Contribution Award for the significant difference they made to our community through Warwick SEED.

"When I studied at Monash University in my second year, we had an introductory week where I came across 'Borrow Cup', a free reusable cup sharing system which cuts down on waste from campus coffee shops. The project was a student-led enterprise, supported by the University and its sustainability team. This was a great opportunity to get involved with something that I was passionate about and that was related to GSD."

**Maddie,**  
Politics, International Studies  
and GSD graduate



## 2. Year-long study abroad

If you want to extend your learning and broaden your perspective by studying abroad for a year, Warwick has partnerships with universities across the world. You will spend your first and second years at Warwick, studying abroad in your third year. You will then return to Warwick for your final year. Your year abroad won't count towards your overall final mark (but it will be recorded on your Higher Education Achievement Report), giving you the freedom to take chances with your module choices and push yourself outside of your comfort zone with your learning. Depending on your destination, you will have the opportunity to learn a new language and immerse yourself in a new learning context.

"Whilst my aim in picking modules was to be related to what I study back at Warwick, I really wanted to make use of the diversity and interdisciplinarity of courses in Canada, and take modules that wouldn't be available when I get back home."

**Meredith**, Sociology and GSD graduate, year-long study abroad at Queen's University, Canada

## 3. Optional modules

If you are looking for a short-term alternative for studying abroad, then some of our optional modules allow you to experience the benefits of overseas learning through engaging trips and experiences abroad.

### Some of the modules that include study abroad experiences include:

- ▶ **WIISP** - a two-week residential module in Brussels in collaboration with the Warwick International Intensive Study Programme (WIISP). Students will study political, cultural, economic, social and environmental questions relevant to the city of Brussels.
- ▶ **A Sustainable Serenissima: Water and the Future of Venice** - This residential module examines the ways in which contemporary Venice confronts sustainability challenges and develops resilience. The theme of 'water' will serve as a conceptual anchor to ground our consideration of issues such as rising sea levels, urbanization, resource management, energy production and distribution.

Sometimes circumstances may arise which are beyond the control of the GSD Department and the University which will require changes to the study abroad programmes offered and/or location. An example circumstance is the ever-evolving COVID-19 pandemic; we are still encountering uncertain times for travelling as a result of the pandemic.

# Professional development

We acknowledge the importance of employability skills and we have embedded them as part of your studies.

We offer a series of bespoke co-curricular certificates and work placement options to continue your professional development.

Outside of the curriculum, the certificates aim to develop employability skills which have been identified by employers as being vital for success in the workplace. Your achievement will be recorded on your Higher Education Achievement Report which you can show to employers.

You will have the opportunity to take part in both short and long work placements during your degree. Work placements will enable you to engage in the world of work and learn about the professional environment. They are an opportunity for you to apply theory to practice, develop skills, learn from industry professionals as well as explore a future career path. This experience develops your employability skills and prepares you for future employment.

## Certificates

### Certificate of Digital Data

To succeed in a digital society, you need to be savvy about how it can be used to enhance your life and career, and aware of the potential threats that come with the territory.

Workshops for this certificate focus on issues including online identity, privacy and security, and digital etiquette.

### Certificate of Sustainability Consultancy (Auditing)

On this certificate you will develop consultancy skills by undertaking a sustainability-related audit with an internal University client. In a team, you will focus on one aspect of sustainability on campus and ways of addressing the problem, before reporting your findings and reflecting on your learning.

### Certificate of Coaching Practice

This certificate aims to develop your ability and confidence to conduct effective coaching conversations. You will have the opportunity to practise the key skills – such as listening to understand, asking open questions, and building rapport and trust – that enable you to coach well. These skills are useful in many other contexts, including teaching, consultancy and managing people.

### Certificate of Professional Communication

This certificate aims to develop your professional communication skills and promote your understanding of the working environment. It is designed to make the link between

communication and employability, which is pivotal for your personal and professional growth. Workshops will explore theories and concepts around communication in relation to the world of work. Using this preparation, you will undertake a short work placement which concludes the certificate.

### Carbon Literacy Certificate

This certificate is the first step for students to become carbon literacy trainers or consultants. Students will learn to communicate about climate change, adapting their message to different audiences, and how to use tools to induce change for a more sustainable future, both individually and as part of collective initiatives.

## Work placements

### Year-long work placement

You will complete a four-year degree and your work placement will take place in your third year. The work placement can take place in the UK or globally and after completion, you will return to Warwick for your final year. Your year-long work placement will be formally recognised on your Higher Education Achievement Report.





### Short work placements

We support students to undertake shorter work placements throughout the year. Our students have been successful in securing work placements with employers from the private, public, and third sectors. This includes Investment Banking, Advertising, Research Institutions, Governmental Bodies, NGOs, Intelligence Agencies, Environmental Consultancies, and many others. They have undertaken diverse roles, including but not limited to, Marketing Assistant, Sustainability Officer, Intelligence Analyst, and Researcher.

### Support

We have a dedicated Employability and Placement Manager who will provide you with one-to-one careers guidance. They work in collaboration with employers, so you will be supported in securing appropriate work placements. You will have access to specialist pre-placement advice, guidance and preparation, as well as on-going support during your placement.

You will also have access to the University's **Student Opportunity** resources (including careers counselling, employment advice, and job fairs).

[warwick.ac.uk/studentopportunity](http://warwick.ac.uk/studentopportunity)

**88% of our graduates find graduate-level jobs/study within 15 months after graduation**

*(The Guardian, "The best UK universities 2022 - league table")*

### IEMA accreditation

Our GSD course has been accredited by IEMA (the Institute for Environmental Management and Assessment) - the global professional body for individuals and organisations working, studying or interested in the environment and sustainability. Accreditation by IEMA, confirms that our students receive a professionally recognised level of knowledge, skills and tools for working in sustainability practice.

All undergraduate students of GSD will receive a free student membership and upon completion of the course, will qualify for Graduate Membership of IEMA and the ability to use the GradIEMA title. Graduate members can "Fast track" to Practitioner Membership (PIEMA) following successful completion of a work-based assessment of competence.

"Work placements are a way for students to get experience in an area they think they may be interested in."

"The interns met and exceeded our expectations. We were impressed by how proactive and engaged they were. They are quick to learn and very open-minded. They were also clearly passionate about the environment which adds credibility in our line of work."

**Kaushal,**  
Founder and CEO, envopAP

# Beyond the classroom

Like you, our students recognise the importance of making a practical difference.

That is why they are actively involved in projects and campaigns on campus and in our communities. You too can use your time at Warwick to meet new people, develop your skills, and follow your passions.

## Warwick GSD Society

Warwick GSD Society is the social home and discussion space for all Warwick students who are interested in the present and future social, economic, and environmental challenges of sustainable development. The society aims to promote and educate students about sustainable development and organises academic discussions and talks and various social activities for its members.

f @GSDSoc

## GLOBUS Warwick

GLOBUS is an online publication created and run by GSD students. It features articles, videos, news and advice which address aspects of our culture, society, science and the arts that raise issues of sustainability, as well as items about what it is like to be a GSD student at Warwick.

The GLOBUS team also run outreach projects in the community such as the Warwick Climate Negotiating Forum, and the 2019 Climate Emergency campaign that led to the University's commitments to carbon neutrality.

f @globuswarwick

## Warwick SEED

Warwick SEED (Socio-Economic Engagement and Development), established in 2018, was co-founded by two GSD students. The society encourages students to embrace positive business impact and pursue social impact careers such as social enterprises, start-ups and B corporations.

f @WarwickSEED



Left: GSD students and staff helping the Grounds team to plant trees on campus on behalf of the Warwick Climate Negotiating Forum



# Entry requirements

Please note all our courses require a minimum of grade B/grade 6 in English Language and Mathematics at GCSE or equivalent.

## **BASc Global Sustainable Development (L8A1)**

**A level:** AAA

We make differential offers to students in a number of circumstances at AAB

**IB:** 36 to include English and Mathematics

## **BASc GSD and Business Studies (L8N1)**

**A level:** A\*AA

We make differential offers to students in a number of circumstances at AAB

**IB:** 38 to include English and Mathematics

## **BASc Economic Studies and GSD (L1L8)**

**A level:** A\*A\*A including Mathematics

We make differential offers to students in a number of circumstances at AAA including Mathematics

**IB:** 39 with 666 in 3 Higher Level subjects including Higher Level Mathematics (either 'Analysis and Approaches' or 'Applications and Interpretation') and English

## **BASc Education Studies and GSD (XL38)**

**A level:** AAB

We make differential offers to students in a number of circumstances at ABB

**IB:** 34 points to include English and Mathematics

## **BASc Hispanic Studies and GSD (R4L8)**

**A level:** AAB to include a modern or classical language

We make differential offers to students in a number of circumstances at ABB including Spanish

**IB:** 34 to include a modern or classical language at Higher Level 5, and English and Mathematics

## **BASc History and GSD (V1L8)**

**A level:** AAA to include History

We make differential offers to students in a number of circumstances at AAB including grade A in History

**IB:** 36 to include History (at Higher Level 6), English and Mathematics

## **BASc Life Sciences and GSD (C1L8)**

**A level:** AAB to include Biology

We make differential offers to students in a number of circumstances at ABB, to include Biology

**IB:** 34 to include Biology at Higher Level 5, and English and Mathematics

## **BASc Philosophy and GSD (V5L8)**

**A level:** AAA

We make differential offers to students in a number of circumstances at AAB

**IB:** 36 to include English and Mathematics

## **BASc Politics, International Studies and GSD (L2L8)**

**A level:** AAA

We make differential offers to students in a number of circumstances at AAB

**IB:** 36 to include English and Mathematics

## **BASc Psychology and GSD (C8L8)**

**A level:** AAB

We make differential offers to students in a number of circumstances at ABB

**IB:** 34 to include English and Mathematics

## **BASc Sociology and GSD (L3L8)**

**A level:** AAB

We make differential offers to students in a number of circumstances at ABB

**IB:** 34 to include English and Mathematics

## **BASc Theatre and Performance Studies and GSD (W4L8)**

**A level:** AAB

We make differential offers to students in a number of circumstances at ABB

**IB:** 34 to include English and Mathematics

## **BASc Design Studies and GSD (H1L8)**

**A level:** AAA

We make differential offers to students in a number of circumstances at AAB

**IB:** 36 to include English and Mathematics

We welcome applications from students taking a wide range of qualifications.

For more information please visit [warwick.ac.uk/ugoffers](http://warwick.ac.uk/ugoffers)

## How to apply

Everything you need to know about applying to Warwick is on our web pages. There is up-to-date information about:

- ▶ How to apply
- ▶ Writing your personal statement
- ▶ Key dates and deadlines
- ▶ How we process your application
- ▶ After you've applied

If you are made and accept an offer, and meet any outstanding conditions, we will confirm your place and look forward to warmly welcoming you at the start of your life here at Warwick.

How to apply:  
[warwick.ac.uk/study/undergraduate/apply](https://warwick.ac.uk/study/undergraduate/apply)

## Overseas Applicants

At Warwick, we welcome applications from across the globe, and have dedicated teams available to advise and support, as well as a global network of Agents and Representatives.

Overseas application advice:  
[warwick.ac.uk/io](https://warwick.ac.uk/io)

## Global Sustainable Development

Ramphal Building,  
School for Cross-faculty Studies,  
University of Warwick,  
Coventry, CV4 7AL

## Student fees and funding

We want to ensure that, wherever possible, financial circumstances do not become a barrier to studying at Warwick. We provide extra financial support for qualifying students from lower income families.

Fees and funding:  
[warwick.ac.uk/studentfunding](https://warwick.ac.uk/studentfunding)

## Accommodation

We manage approximately 7,500 self-catered rooms on campus for different budgets and requirements. Living on campus in your first year gives you the opportunity to meet people and form friendships whilst never being more than a short distance from your lectures or our amazing campus facilities. At Warwick, you'll enjoy the freedom of independent living with the security of knowing you're surrounded by people who can support you.

Living on campus:  
[warwick.ac.uk/accommodation](https://warwick.ac.uk/accommodation)

## Discover more

If you have questions about living and studying at Warwick, speak to our current students to get answers on:

- ▶ Campus life
- ▶ Accommodation
- ▶ Study support, wellbeing and more

Unibuddy:  
[warwick.ac.uk/study/unibuddy](https://warwick.ac.uk/study/unibuddy)

✉ [UGGSD@warwick.ac.uk](mailto:UGGSD@warwick.ac.uk)

🖥️ [warwick.ac.uk/gsd](https://warwick.ac.uk/gsd)



### Find us online

🌐 [WarwickGSD](https://warwick.ac.uk/gsd)

f [WarwickGSD](https://warwick.ac.uk/gsd)

This course information was accurate at the time of publication (October 2023). While the University tries to ensure that the information is accurate, it does not warrant that this is the case. The University may need to make changes including to the course content, syllabus, delivery, methods of assessment, or to comply with external accrediting or reviewing bodies. It is therefore important that you revisit the relevant course website before you apply and when you accept an offer to ensure you are viewing the most up to date information. This information should not be construed as an offer and nor does it create a contract or other legally binding relationship between the University and you or a third party. For full terms and conditions, please visit [warwick.ac.uk/ugtermsandconditions](https://warwick.ac.uk/ugtermsandconditions)