



WARWICK
THE UNIVERSITY OF WARWICK

Open Day Programme

Saturday 5 and 19 October 2024

Belong here. **Go anywhere.**



Welcome



This programme includes all the sessions taking place today.

All your booked session details are included in the latest email from us. Please speak to us at an **Information Point** if you need help checking your bookings.

Entry to pre-booked sessions requires confirmation of your booking and is limited to you plus one guest to prioritise student attendance. If you've not booked, please arrive 15 minutes before the start time and staff will advise if space is available.

We hope you have a great day!



Accommodation

Residences are open to view today from 10.00-15.45.

Go to the residences you want to see and our ambassadors will be on hand to help. See our **Open Day Map** to find our residences and follow our campus trails.

Speak to our Accommodation Team at the **Information Fair in Rootes Building** to ask any questions you may have about living on campus.

If you don't have much time today, we recommend visiting a shared and en-suite bathroom option so you can see the variety of accommodation available.



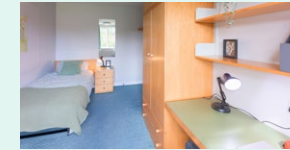
Arthur Vick

- // En-suite bathroom
- // Small double bed
- // £232 per week (2024/25)
- // Up to 14 students sharing a kitchen



Bluebell

- // En-suite bathroom
- // Small double bed
- // £245 per week (2024/25)
- // Up to 8 students sharing a kitchen



Claycroft

- // Shared bathroom between 2 students
- // Single bed
- // £170 per week (2024/25)
- // Up to 8 students per flat sharing a kitchen



Cryfield Apartments

- // En-suite bathroom
- // Small double bed
- // £226 per week (2024/25)
- // Up to 12 students sharing a kitchen



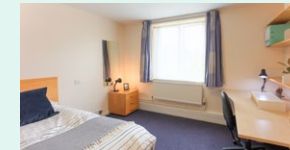
Cryfield Standard

- // Shared bathroom between 6 students on average
- // Single bed
- // £121 per week (2024/25)
- // Up to 14 students sharing a kitchen



Cryfield Townhouses

- // En-suite bathroom
- // Small double bed
- // £221 per week (2024/25)
- // Up to 12 students sharing a kitchen



Heronbank

- // En-suite bathroom
- // Single bed
- // £191 per week (2024/25)
- // Up to 8 students sharing a kitchen



Jack Martin

- // En-suite bathroom
- // Small double bed
- // £208 per week (2024/25)
- // Up to 13 students sharing a kitchen



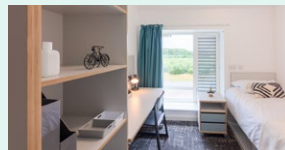
Lakeside

- // En-suite bathroom
- // Small double bed
- // £202 per week (2024/25)
- // Up to 8 students sharing a kitchen*



Rootes

- // Shared bathroom between 6 students on average*
- // Single bed
- // £123 per week (2024/25)
- // Up to 18 students sharing a kitchen*



Sherbourne

- // En-suite bathroom
- // Single bed
- // £199 per week (2024/25)
- // Up to 12 students sharing a kitchen



Tocil

- // Shared bathroom between 4 students on average
- // Single bed
- // £128 per week (2024/25)
- // Up to 12 students sharing a kitchen



Accommodation



Our residences

* The specification stated differs in some areas of Rootes, please see the website for further details.

Please note that the accommodation specs and fees listed are correct for the 2024/25 academic year. These are subject to change for future years. Visit our website more details.

Accommodation

Living on campus allows you to make the most of your experience at Warwick, make new friends and try new things.

Campus accommodation features

- // Self-catered residences, with all our campus facilities in easy walking distance
- // Approx. 7,500 rooms to suit different budgets, with shared bathroom and en-suite room options
- // University-allocated guarantee to new full-time first year undergraduates, provided you meet the conditions and deadlines in our Allocation Principles
- // Residential Community Team (RCT) will help you settle in and make friends, and offer support. The team also host social events throughout the year
- // Community Safety Team available 24/7
- // If you have specific accommodation requirements, we can help to support your needs
- // No application fee, deposit or guarantor required. Utility bills, WiFi and contents insurance included for all our residences, owned and managed by us



What happens next?

- // If you receive an offer from us, you will be invited back to campus for an Offer Holder Day, where you can view some of our residences, speak to current students and our accommodation team
- // Prices, let lengths and allocation principles will be available to view in spring 2025 for the 2025/26 academic year
- // If you accept Warwick as your 'firm' or 'insurance' choice, you will also be able to apply for accommodation (which is not offered on a first-come-first-served basis)
- // By September we will be in touch by email about your accommodation application

Student life sessions

If you have pre-booked onto these sessions you will be given priority entry. If you haven't booked, speak to staff to check if space is available. Don't forget you can also visit the Information Fair and Societies Fair (09:30-16:00), as well as Campus Tours running today (09:15-16:00).



Welcome to Warwick talk

We recommend attending this University overview session, presented by a member of our UK student recruitment team and current students.

Sessions and times	Room	Location	Map reference	Booking required
WELCOME TO WARWICK				
Welcome to Warwick 09:45-10:15 / 13:15-13:45	Butterworth Hall	Arts Centre	C5/6	✓
ACCOMMODATION				
Accommodation Viewings Drop-In 10:00-15:45		Campus		
Accommodation - The Student Experience 09:30-10:00	OC1.05	Oculus	D6	✓
Accommodation - The Student Experience 12:15-12:45	Butterworth Hall	Arts Centre	C5/6	✓
ADMISSIONS				
Admissions Panel Q&A 10:00-10:30	Helen Martin Studio	Arts Centre	C5/6	✓
Admissions Panel Q&A 13:15-13:45	OC1.05	Oculus	D6	✓
CAREERS AND SKILLS				
Careers and Employability 11:00-11:45 / 12:45-13:30	OC0.04	Oculus	D6	✓
Careers and Employability 14:15-15:00	OC1.06	Oculus	D6	✓

Sessions and times	Room	Location	Map reference	Booking required
CHAPLAINCY				
Chaplaincy Drop-In 09:30-15:00		Chaplaincy	D5/6	
FINANCE AND FUNDING				
Your Money at Warwick 10:30-11:00	Studio	Arts Centre	C5/6	✓
Your Money at Warwick 14:00-14:30	Helen Martin Studio	Arts Centre	C5/6	✓
LANGUAGE CENTRE				
For applicants to non-language degrees 10:15-10:45 / 12:00-12:30 13:45-14:15 / 15:45-16:15	OC0.04	Oculus	D6	✓
LIBRARY				
Library Drop-In 10:00-16:00		Library	D5/6	
SPORTS AND WELLNESS				
Sports and Wellness Hub Tours Drop-In 10:00-15:30		Sports and Wellness Hub	B2/3	
Sport and Active Lifestyles at Warwick 10:15-10:45 / 11:00-11:30 / 12:00-12:30 12:45-13:15 / 14:00-14:30 / 14:45-15:15		Sports and Wellness Hub	B2/3	✓
STUDENTS' UNION (WARWICK SU)				
Warwick Students' Union 12:30-13:00 / 15:00-15:30	Copper Rooms	Students' Union	C6	✓
STUDY ABROAD				
Study Abroad 10:30-11:15 / 13:00-13:45 / 14:00-14:45	MS.01	Zeeman	F6	✓
WELLBEING AND STUDENT SUPPORT				
Parents and Supporters - Wellbeing and Student Support 11:15-12:00	OC1.06	Oculus	D6	✓
Parents and Supporters - Wellbeing and Student Support 13:15-14:00	S0.13	Social Sciences	D5	✓

Academic sessions and activities

Find out more about studying at Warwick with our academic sessions and activities. You can also visit our Information Fair in Rootes (see our **Open Day Map** for details) to meet staff from some of our academic departments.

Sessions and times	Room	Location	Map reference	Booking required
APPLIED LINGUISTICS				
Introduction to Applied Linguistics 10:30-11:45 / 14:00-15:15	S0.19	Social Sciences	D5	✓
Applied Linguistics Drop-In 11:45-14:00	S0.19	Social Sciences	D5	
CHEMISTRY				
Chemistry Demonstrations Drop-In 10:00-15:30	Chemistry Concourse	Chemistry and Physics	E5	
Chemistry Lab Sessions Drop-In 10:00-15:30	3rd Floor UG Labs	Chemistry and Physics	E5	
Chemistry Degrees at Warwick 10:30-11:00 / 14:15-14:45	L3	Chemistry and Physics	E5	✓
Chemistry Taster Lecture 11:30-12:00	L3	Chemistry and Physics	E5	✓
Chemistry Taster Lecture 12:45-13:15	L4	Chemistry and Physics	E5	✓
A Week in the Life of a Chemistry Student 13:30-14:00	L4	Chemistry and Physics	E5	✓
CLASSICS AND ANCIENT HISTORY				
Classics: Intro Talk 11:45-12:45	FAB0.08	Faculty of Arts (FAB)	D6	✓
Degree Talk: Classical Civilisation and Ancient History and Classical Archaeology 12:45-13:45	FAB0.08	Faculty of Arts (FAB)	D6	✓
Degree Talk: Classics (Greek and Latin variants) and Classics/English combined degrees 12:45-13:45	FAB5.03	Faculty of Arts (FAB)	D6	✓

Sessions and times	Room	Location	Map reference	Booking required
CLASSICS AND ANCIENT HISTORY (continued)				
Classics Lunch 13:45-14:30	Classics Academic Studio	Faculty of Arts (FAB)	D6	✓
Classics Parents/HoD Drop-In 14:30-15:30	Classics Academic Studio	Faculty of Arts (FAB)	D6	
Classics Taster Talk - "The Madness of Heracles: Virtual Reality in Ancient Art and Text" with Dr Emily Clifford (5 October only) 14:45-15:45	OC1.03	Oculus Building	D6	✓
Classics Taster Talk - "The tyrant's body; Seneca's Claudius" with Professor Victoria Rimell (5 October only) 14:45-15:45	OC1.04	Oculus Building	D6	✓
Classics Taster Talk - "How to become a princeps at Pompeii" with Professor Alison Cooley (19 October only) 14:45-15:45	OC1.03	Oculus Building	D6	✓
Classics Taster Talk - "How to become a princeps at Pompeii" with Professor Alison Cooley (19 October only) 14:45-15:45	OC1.03	Oculus Building	D6	✓
Classics Taster Talk - "Hippocrates" with Professor Caroline Petit (19 October only) 14:45-15:45	OC1.04	Oculus Building	D6	✓
Classics Informal Tea and Coffee/Biscuits 15:30-16:30	Classics Academic Studio	Faculty of Arts (FAB)	D6	✓
COMPUTER SCIENCE				
Computer Science (including Discrete Mathematics) 10:00-10:45	R0.21	Ramphal	D5	✓
Computer Science Drop-In (Student) 11:00-14:45	CS0.03	Computer Science	E6	
Computer Science Drop-In (Academic, Research) 11:00-14:45	CS1.04	Computer Science	E6	
Computer Science Tour (Student Led) 11:00-13:00 / 13:45-14:45 (am/pm session 30 minute slots)		Computer Science	E6	✓
Computer Science Lab Workshop 11:00-12:00 / 12:00-13:00 / 13:30-14:30	CS0.06	Computer Science	E6	✓
Computer Science Mini Lecture 14:45-15:30	R0.21	Ramphal	D5	✓

Sessions and times	Room	Location	Map reference	Booking required
CYBER SECURITY (WMG)				
Cyber Security Overview, Q&A, and Activity 10:30-12:00 / 13:00-14:30	Main Auditorium 002	WMG IMC	E5/6	✓
Cyber Security Drop-in 10:30-15:00	Student Hub	WMG IMC	E5/6	
Lab (WMG) 11:00-15:00		Degree Apprenticeship Centre	F6	
DEGREE APPRENTICESHIPS				
Introduction to WMG's Digital and Technology Solutions Degree Apprenticeship 10:30-11:15 / 13:00-13:45		Degree Apprenticeship Centre	F6	✓
WMG Drop-In with Employers and Staff 11:00-15:00		Degree Apprenticeship Centre	F6	
Introduction to the Civil and Infrastructure Engineer Degree Apprenticeship 11:00-11:45	Helen Martin Studio	Arts Centre	C5/6	✓
Introduction to WMG's Applied Professional Engineering Degree Apprenticeship 11:30-12:15 / 14:00-14:45		Degree Apprenticeship Centre	F6	✓
Introduction to the Electromechanical Engineer Degree Apprenticeship 14:30-15:15	Helen Martin Studio	Arts Centre	C5/6	✓
DESIGN AND GLOBAL SUSTAINABLE DEVELOPMENT				
Design Studies Drop-In 09:30-16:00	Agora	Faculty of Arts Building	D6	
Design and Global Sustainable Development Overview session 10:30-11:30 / 15:00-16:00	FAB1.10	Faculty of Arts Building	D6	✓
ECONOMICS				
Economics 10:45-11:45	Butterworth Hall	Arts Centre	C5/6	✓
Economics Drop-In 11:45-15:00	OC0.02	Oculus	D6	

Sessions and times	Room	Location	Map reference	Booking required
ECONOMICS, PSYCHOLOGY AND PHILOSOPHY (EPP)				
EPP: Combining Economics, Psychology and Philosophy 10:30-11:30 / 14:30-15:30	S0.20	Social Sciences	D5	✓
EPP Taster 12:00-12:45	S0.20	Social Sciences	D5	✓
EPP Drop-In and Lunch 12:30-13:45	OC1.08	Oculus	D6	
EDUCATION STUDIES				
Introduction to BA Education 12:00-12:45	OC1.02	Oculus	D6	✓
BA Education Taster Lecture 13:00-13:45	OC1.02	Oculus	D6	✓
BA Education Drop-In 14:00-15:00	OC1.02	Oculus	D6	
ENGINEERING				
Engineering Tours 10:00-16:30	Engineering Reception	Engineering (Sciences)	E5	
Engineering Drop-In, Exhibition and Lab Demonstrations 10:00-17:00	Engineering Reception	Engineering (Sciences)	E5	
Introduction to Degrees in the School of Engineering 11:15-12:30	MS.02	Zeeman	F6	✓
Introduction to Degrees in the School of Engineering 13:15-14:30	R0.21	Ramphal	D5	✓
ENGLISH LITERATURE				
English Drop-In 10:00-17:00	FAB Student Hub, Floor 5	Faculty of Arts (FAB)	D6	
English Intro Talk 11:30-12:15	OC0.03	Oculus	D6	✓
English Taster Lecture 12:30-13:00	OC0.03	Oculus	D6	✓
English Intro Talk 14:30-15:15	FAB0.03	Faculty of Arts (FAB)	D6	✓
English Taster Lecture 15:30-16:00	FAB0.03	Faculty of Arts (FAB)	D6	✓

Sessions and times	Room	Location	Map reference	Booking required
FILM AND TELEVISION STUDIES				
Film: Overview of degree and sample lecture 10:45-11:45 / 12:00-13:00 / 14:00-15:00	FABM0.21 (Cinema)	Faculty of Arts (FAB)	D6	✓
Film Drop-In 11:45-16:15	1st Floor Social Space	Faculty of Arts (FAB)	D6	
Film Sample Seminar 13:00-13:30 / 15:00-15:30	FABM0.09 (Screening Room 2)	Faculty of Arts (FAB)	D6	✓
Film: Careers and Employability 13:30-14:00 / 15:30-16:00	FABM0.10 (Screening Room 3)	Faculty of Arts (FAB)	D6	✓
GLOBAL SUSTAINABLE DEVELOPMENT (GSD)				
GSD Overview Session 11:00-12:00 / 13:00-14:00	R0.03	Ramphal	D5	✓
GSD Drop-In 12:00-15:30	R1.13	Ramphal	D5	
GSD Taster Session 12:00-13:00 / 14:00-15:00	R0.14	Ramphal	D5	✓
HISTORY				
Welcome to Warwick History 10:15-11:15	OC0.03	Oculus	D6	✓
History Drop-In with Refreshments (Meet our Students) 10:30-16:30	FAB3.57	Faculty of Arts (FAB)	D6	
Welcome to Warwick History 12:00-13:00	OC1.05	Oculus	D6	✓
History Taster Lecture 1 13:45-14:45	OC0.03	Oculus	D6	✓
History Taster Lecture 2 15:15-16:15	FAB0.08	Faculty of Arts (FAB)	D6	✓
HISTORY OF ART				
Introduction to History of Art and Module Showcase 11:00-12:00 / 14:00-15:00	FAB2.43 5 Oct FAB2.32 19 Oct	Faculty of Arts (FAB)	D6	✓
History of Art: Lunch And Drop-In 12:30-14:00	FAB2.47	Faculty of Arts (FAB)	D6	
History of Art Careers Session 14:00 15:00	FAB2.31	Faculty of Arts (FAB)	D6	✓
History of Art Student Led Tour 15:15-15:45	Agora	Faculty of Arts (FAB)	D6	✓

Sessions and times	Room	Location	Map reference	Booking required
LAW				
Law 11:00-12:00	R0.21	Ramphal	D5	✓
Law Drop-In 12:00-15:30	Student Hub	Social Sciences	D5	
Law (repeated session) 14:30-15:30	OC1.05	Oculus	D6	✓
LIBERAL ARTS				
Liberal Arts Drop-In 10:00-16:00	R0.12	Ramphal	D5	
Liberal Arts Overview Session 10:00-11:00	R0.03	Ramphal	D5	✓
Liberal Arts Taster Session 13:00-14:00	R1.03	Ramphal	D5	✓
Liberal Arts Overview Session 14:00-15:00	R1.03	Ramphal	D5	✓
LIFE SCIENCES				
Life Sciences: Demos Drop-In 10:00-15:30	GLT3	Life Sciences	A8	
Life Sciences Research: Drop-In Video Screening 10:00-16:00	GLT4	Life Sciences	A8	
Life Sciences: Tours Drop-In 10:00-15:30	Atrium	Life Sciences	A8	
Life Sciences: Degrees in the School of Life Sciences 10:30-11:15 / 12:00-12:45 / 14:00-14:45	IBR0.01	IBRB	A8	✓
MATHEMATICS, STATISTICS, DATA SCIENCE AND MORSE				
MathStat, MORSE and Data Science: Department Tour (Student-Led) 09:30-11:45 (running every 15 mins) 12:45-15:45 (running every 15 mins)		Mathematical Sciences Building	F6	✓
Maths at Warwick with Q&A 10:00-10:45 / 15:30-16:15	MS.02	Zeeman	F6	✓
MORSE: Informal Talk and Q&A 11:00-11:30	MS.04	Zeeman	F6	✓
MathStat, MORSE and Data Science: Course Overview 11:45-12:15 / 15:00-15:30	MS.01	Zeeman	F6	✓

Sessions and times	Room	Location	Map reference	Booking required
MATHEMATICS, STATISTICS, DATA SCIENCE AND MORSE (continued)				
MathStat, MORSE and Data Science: Taster Lecture 12:15-12:50	MS.01	Zeeman	F6	✓
Mathematics: Beautiful and Useful 13:00-13:45	MS.02	Zeeman	F6	✓
MathStat, MORSE and Data Science: Student Talk and Panel Q&A 13:45-14:15	MS.04	Zeeman	F6	✓
Mathematics Admissions Test Workshop 14:15-15:00	MS.02	Zeeman	F6	✓
MEDIA AND CREATIVE INDUSTRIES				
Introduction to Media and Creative Industries 11:30-12:30 / 15:00-16:00	FAB1.01	Faculty of Arts (FAB)	D6	✓
Media Lab Taster Session 12:45-13:45	FAB1.16	Faculty of Arts (FAB)	D6	✓
Media and Creative Industries Drop-In Q&A 14:00-15:00	FAB1.01	Faculty of Arts (FAB)	D6	
PHILOSOPHY				
Welcome to Philosophy Talk 10:15-11:15	FAB0.03	Faculty of Arts (FAB)	D6	✓
Philosophy Taster Lecture 11:30-12:30	FAB0.03	Faculty of Arts (FAB)	D6	✓
Philosophy Drop-In 12:45-13:30 / 15:15-16:00	S2.73	Social Sciences	D5	
Welcome to Philosophy Talk 14:00-15:00	FAB0.08	Faculty of Arts (FAB)	D6	✓
PHILOSOPHY, POLITICS AND ECONOMICS (PPE)				
PPE Overview 10:00-11:00	Woods-Scawen Room	Arts Centre	C5/6	✓
PPE Taster Lecture 12:00-12:45	Studio	Arts Centre	C5/6	✓
PPE Drop-In and Lunch 12:30-13:45	OC1.06	Oculus	D6	
PPE Overview 14:30-15:30	Studio	Arts Centre	C5/6	✓

Sessions and times	Room	Location	Map reference	Booking required
PHILOSOPHY, POLITICS AND LAW (PPL)				
PPL at Warwick: An Overview 10:15-11:15	S0.21	Social Sciences	D5	✓
PPL at Warwick: Taster Lecture 11:45-12:30	S0.21	Social Sciences	D5	✓
PPL Drop-In and Lunch 12:30-13:45	OC1.07	Oculus	D6	
PPL at Warwick: An Overview 14:30-15:30	OC0.04	Oculus	D6	✓
PHYSICS				
Physics Demonstrations 11:00-15:30	Physics Concourse	Chemistry and Physics	E5	
Why do Maths and Physics? 11:15-11:45	L4	Chemistry and Physics	E5	✓
Why do Physics? 11:15-11:45 / 12:15-12:45	PLT	Chemistry and Physics	E5	✓
Why do Physics with Astrophysics? 12:15-12:45	L3	Chemistry and Physics	E5	✓
Physics Taster Lecture 13:15-13:45	L3	Chemistry and Physics	E5	✓
Why do Maths and Physics? 14:15-14:45	PLT	Chemistry and Physics	E5	✓
POLITICS AND INTERNATIONAL STUDIES (PAIS)				
Politics and International Studies 11:30-12:30 / 14:30-15:30	Woods-Scawen Room	Arts Centre	C5/6	✓
Politics and International Studies Drop-In 12:30-16:15	D2.04 (PAIS Common Room)	Social Sciences	D5	
Politics and International Studies - Question Time 13:00-14:00	Woods-Scawen Room	Arts Centre	C5/6	✓
Politics and Modern Languages 14:00-15:00	FAB5.03	Faculty of Arts (FAB)	D6	✓
PSYCHOLOGY				
Psychology at Warwick 10:30-11:45	OC1.05	Oculus	D6	✓
Psychology Drop-In 13:00-14:30	OC1.04	Oculus	D6	

Sessions and times	Room	Location	Map reference	Booking required
SCHOOL OF MODERN LANGUAGES AND CULTURES (SMLC)				
Welcome to Warwick SMLC 10:00-11:00	FAB0.08	Faculty of Arts (FAB)	D6	✓
SMLC Drop-In and Refreshments 11:00-16:00	OC0.01	Oculus	D6	
German Taster (for Languages degrees) 11:15-12:00	OC1.01	Oculus	D6	✓
Translation and Transcultural Studies Taster 11:15-12:00	OC1.09	Oculus	D6	✓
Italian Taster (for Languages degrees) 12:00-12:45	OC1.09	Oculus	D6	✓
German Taster (for Languages degrees) 12:00-12:45	OC1.01	Oculus	D6	✓
Where Can Languages Take You? 13:00-13:30	FAB0.03	Faculty of Arts (FAB)	D6	✓
French Taster (for Languages degrees) 13:45-14:30	OC1.01	Oculus	D6	✓
Hispanic Studies Taster (for Languages degrees) 13:45-14:30	OC1.09	Oculus	D6	✓
Chinese Taster (for Languages degrees) 14:30-15:15	OC1.07	Oculus	D6	✓
French Taster (for Languages degrees) 14:30-15:15	OC1.01	Oculus	D6	✓
Hispanic Studies Taster (for Languages degrees) 14:30-15:15	OC1.09	Oculus	D6	✓
Arabic Taster (for Languages degrees) 15:15-16:00	OC1.07	Oculus	D6	✓
Portuguese Taster (for Languages degrees) 15:15-16:00	OC1.09	Oculus	D6	✓
Russian Taster (for Languages degrees) 15:15-16:00	OC1.01	Oculus	D6	✓
Japanese Taster (for Languages degrees) 16:00-16:45	OC1.01	Oculus	D6	✓
Korean Taster (for Languages degrees) 16:00-16:45	OC1.09	Oculus	D6	✓
SOCIOLOGY				
Sociology 12:45-13:45 / 14:00-15:00 / 15:15-16:15	S0.21	Social Sciences	D5	✓

Sessions and times	Room	Location	Map reference	Booking required
THEATRE AND PERFORMANCE STUDIES				
Theatre and Performance Studies: Intro from Staff and Students 11:00-12:00 / 13:00-14:00	FAB0.20 (Studio 2)	Faculty of Arts (FAB)	D6	✓
Theatre and Performance Studies: Taster Practical Workshop 12:00-13:00 / 14:00-15:00	FAB0.16	Faculty of Arts (FAB)	D6	✓
Theatre and Performance Studies: Drop-In 12:00-13:00 / 14:00-15:00	FAB0.20 (Studio 2)	Faculty of Arts (FAB)	D6	
WARWICK BUSINESS SCHOOL (WBS)				
Intro to Business and Management 10:15-11:15 / 13:30-14:30	Lecture Theatre 0.004	Warwick Business School (WBS)	D4-E4	✓
WBS Drop-In Session 11:00-16:00	UG Learning Space	Warwick Business School (WBS)	D4-E4	
Intro to Accounting and Finance 11:30-12:30 / 14:45-15:45	Lecture Theatre 0.004	Warwick Business School (WBS)	D4-E4	✓
WBS Careers Talk 12:45-13:15	Lecture Theatre 0.004	Warwick Business School (WBS)	D4-E4	✓
WARWICK MEDICAL SCHOOL (WMS)				
BSc Health and Medical Sciences Drop-In and demos 10:00-16:00	Education Hub	Medical School	A8	
MSci Integrated Natural Sciences Drop-In, demos and lab tours 10:00-16:00	Education Hub	Medical School	A8	
BSc Health and Medical Sciences / MSci Integrated Natural Sciences Overview Talk 11:00-11:45 / 12:30-13:15 / 14:00-14:45	Education Hub	Medical School	A8	✓
Destination Medicine 13:30-14:00	GLT2	Medical School	A8	✓
WARWICK WRITING PROGRAMME				
Warwick Writing Programme Drop-In 11:30-12:30	FAB5.01	Faculty of Arts (FAB)	D6	
Warwick Writing Programme 12:30-13:30 / 14:30-15:30	FAB5.01	Faculty of Arts (FAB)	D6	✓
Warwick Writing Programme Taster Session 13:30-14:00 / 15:30-16:00	FAB5.01	Faculty of Arts (FAB)	D6	✓

What's next?

- // Visit our website for details on how to apply
- // Speak to our students on Unibuddy
- // Follow us @uniofwarwick
X @ unibuddy YouTube Unibuddy
- // Ask us your questions on a live chat

Undergraduate Open Days



The University of Warwick
Coventry
CV4 7AL
+44 (0)24 7652 3523
warwick.ac.uk/ug

Open Days team:
opendays@warwick.ac.uk

Emergencies:
024 7652 2222



Please recycle this guide at the end of your visit