



SUSTAINABILITY AT WARWICK

Welcome Week 2024



WARWICK'S SUSTAINABILITY STRATEGY

Professor Stéphanie Panichelli-Batalla
Academic Director (Sustainability)

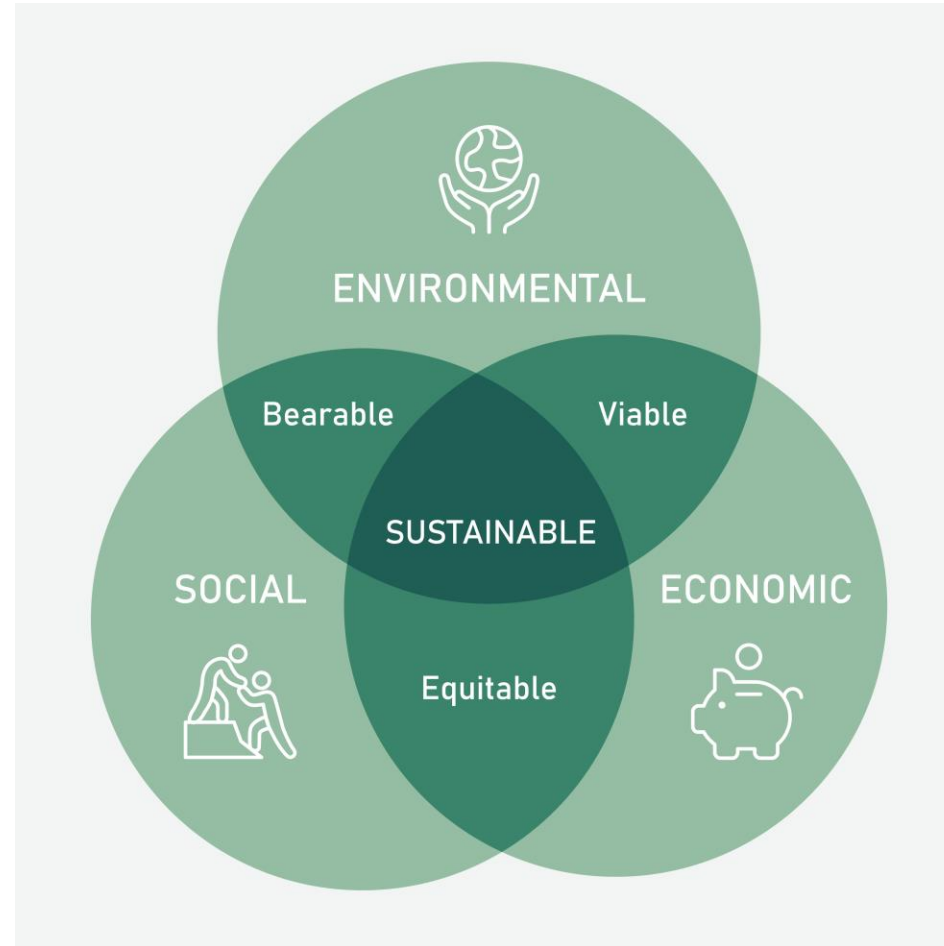
Tuesday 24 September 2024



What is Sustainability?

“Meeting the needs of the present without compromising the ability of future generations to meet their own needs”

(United Nations Brundtland Commission, 1987)





How many can you name?



SUSTAINABLE DEVELOPMENT GOALS

1 NO POVERTY 	2 ZERO HUNGER 	3 GOOD HEALTH AND WELL-BEING 	4 QUALITY EDUCATION 	5 GENDER EQUALITY 	6 CLEAN WATER AND SANITATION
7 AFFORDABLE AND CLEAN ENERGY 	8 DECENT WORK AND ECONOMIC GROWTH 	9 INDUSTRY, INNOVATION AND INFRASTRUCTURE 	10 REDUCED INEQUALITIES 	11 SUSTAINABLE CITIES AND COMMUNITIES 	12 RESPONSIBLE CONSUMPTION AND PRODUCTION
13 CLIMATE ACTION 	14 LIFE BELOW WATER 	15 LIFE ON LAND 	16 PEACE, JUSTICE AND STRONG INSTITUTIONS 	17 PARTNERSHIPS FOR THE GOALS 	 SUSTAINABLE DEVELOPMENT GOALS

Sustainability at Warwick

- Signatory of the the SDG Accord
- The Way to Sustainable
- 4 Paths
 - Research
 - Education
 - Engagement
 - Operations



Research

What?

- Wide ranging research with impact
- Numerous research centres
- Sustainability Spotlight

How?

- Research Impact Services
- LEAF accreditations



Education

- QAA and Advance HE
- Unique interdisciplinary sustainability programmes
- Warwick ESD Network
- Warwick Awards
- Climate Literacy Certificate

Don't worry
about the future.
Change it.

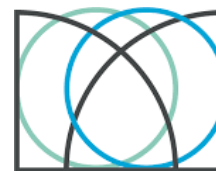


AdvanceHE QAA

Education for Sustainable Development Guidance

Executive Summary

March 2021



WARWICK
AWARD
STUDENT OPPORTUNITY



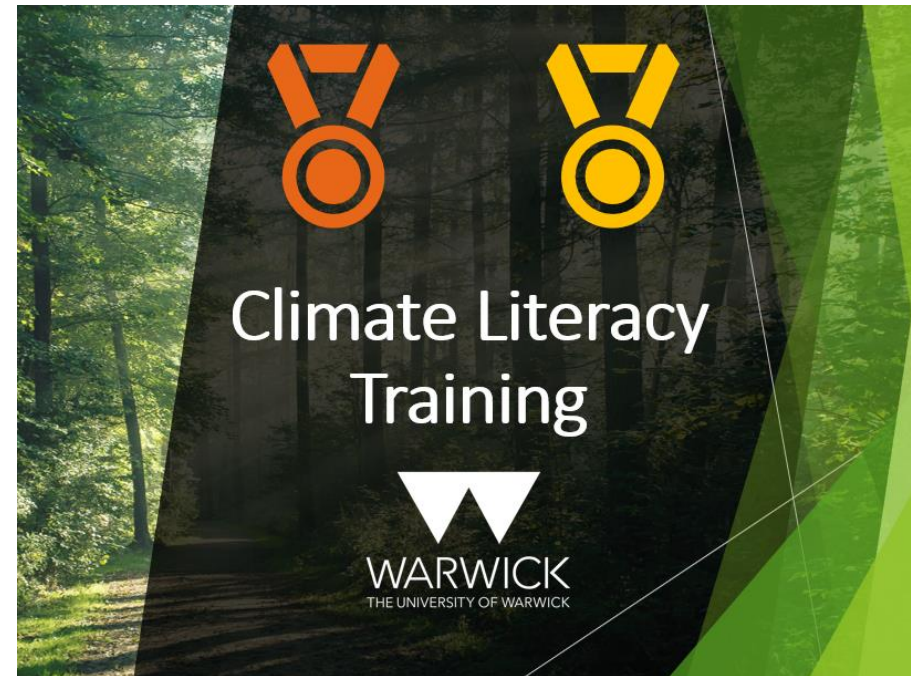
Climate Literacy Training

Launching on Monday the 30th of September!

- Training course developed in collaboration with GSD
- Available for all staff and students
- Focus on climate change, carbon footprints and how you can make a difference to reduce your impact
- Two certificates available:

Classic – an online training delivered via Moodle (10-15 hours)

Gold – an in person session (2 hours)



Engagement

- WIE - Work with the local community
- Energy Youth Summit (October 2024)
- Warwick delegation at COP26 in Glasgow
- Museum of Climate Stories
- Sustainability related volunteering opportunities



Warwick
Volunteers 





Energy and Sustainability Team

Our focus



Carbon
Reporting



Sustainable
Procurement



Energy &
Utilities
Monitoring



Ecology &
Biodiversity



Engagement &
Behaviour
Change



Circular
Economy



ENERGY AND CARBON

Andrew Thomas
Senior Carbon Manager

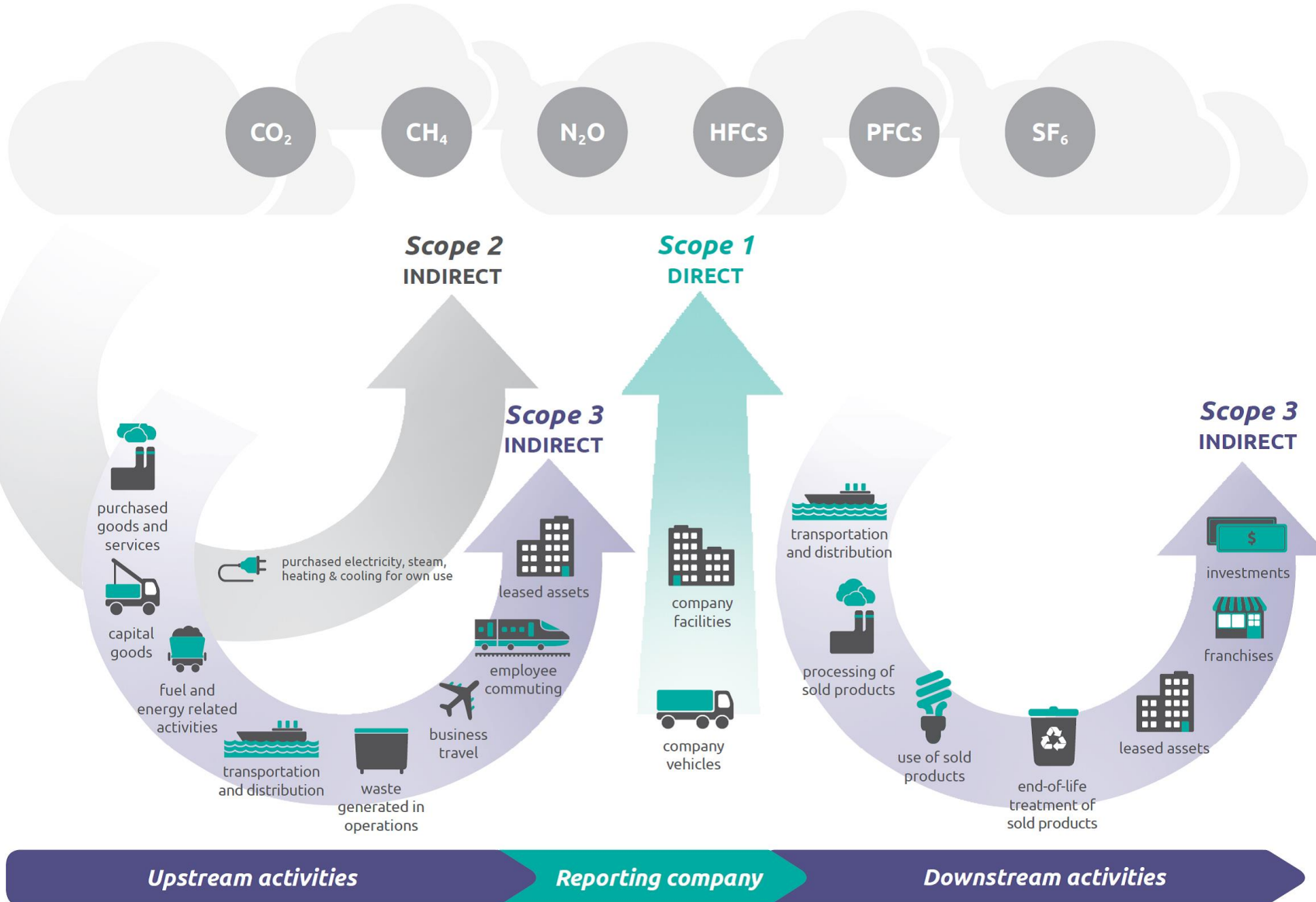


Overview



- 01** The Scopes and our Targets
- 02** Our Strategy
- 03** What We've done, What We're Doing and What We're Planning.

The Scopes and Our Targets



c.25%

Get to Net Zero carbon emissions from direct emissions and the energy we buy by 2030 (Scope 1 and 2)



c.75%

Reach Net Zero carbon for both direct and indirect emissions by 2050 (Scope 1, 2 and 3)

Scope 1 and 2 (Energy) – Our Strategy

Reduce the Energy we Use

Decarbonise Our Sources of Energy

Be **SMART** about how, when and where we use Energy

Reduce Workstream

Reduce the Energy We Consume

What we've Done

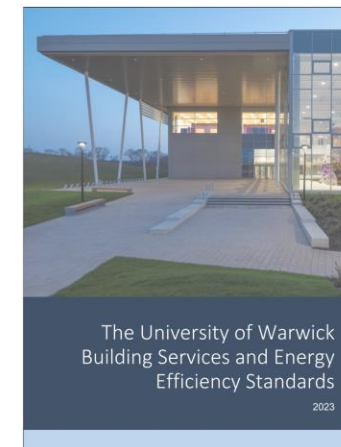
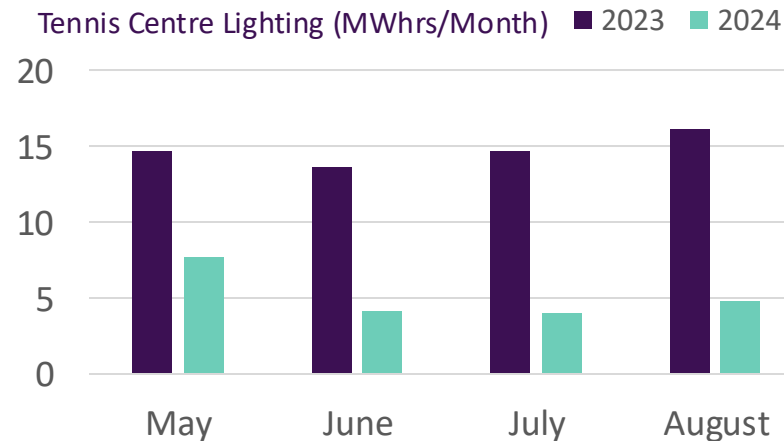
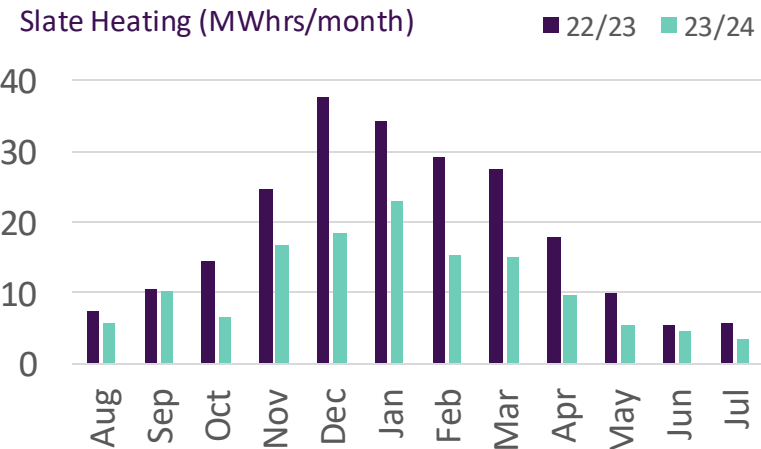
- Building Standards – ahead of National Standards
- Converted c.50% of the Campus to LED Lighting
- Implementing Energy Policy -
- re-set heating and cooling
>100 buildings

What we're Doing

- Increasing the Standards for our Next Buildings
- More Lighting Upgrades
- Increasing the capabilities of our building management systems

What we're Planning

- Creating Standards for Building Operations



Decarbonise Workstream

Change our Sources of Energy

What we've Done

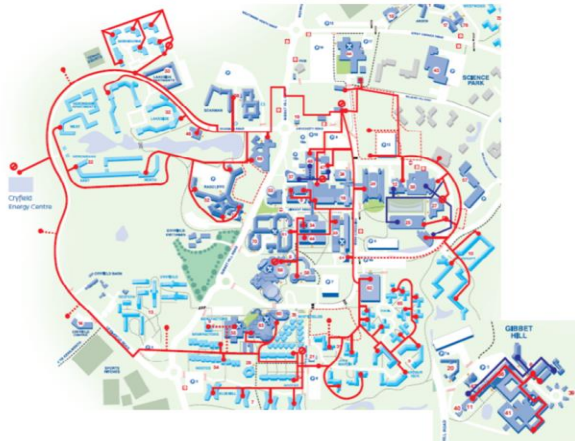
- All purchased Elec from renewable Sources
- Solar PV on all new large buildings for >10yrs
- Heat networks
- Building standards that do not allow gas heating in new build

What we're Doing

- More rooftop solar PV
- Turning off Gas Fired electricity generation
- Selecting the Heat Pumps that will allow us to switch off gas boilers

What we're Planning

- Large Scale (multi-mega Watt) Ground Mount Array
- Transferring our heat load from gas to heat pumps powered by renewable electricity
- Strategic Partnerships to Accelerate Change

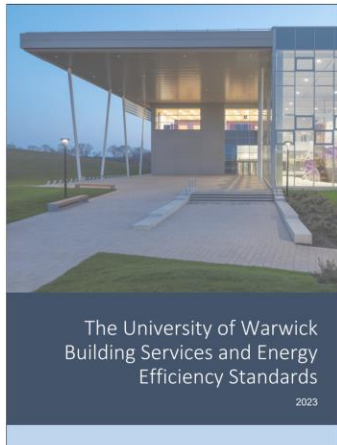


SMART Workstream

Reduce the Energy We Consume

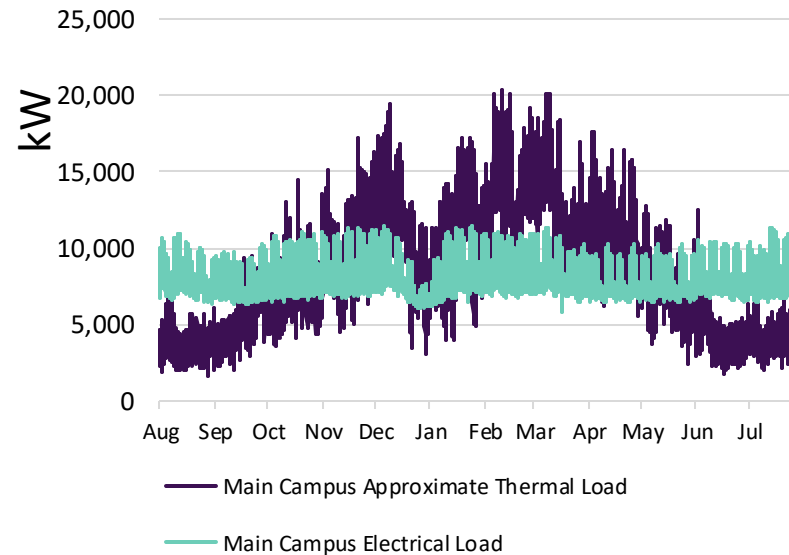
What we've Done

- Written the Standards for Smart Building Controls



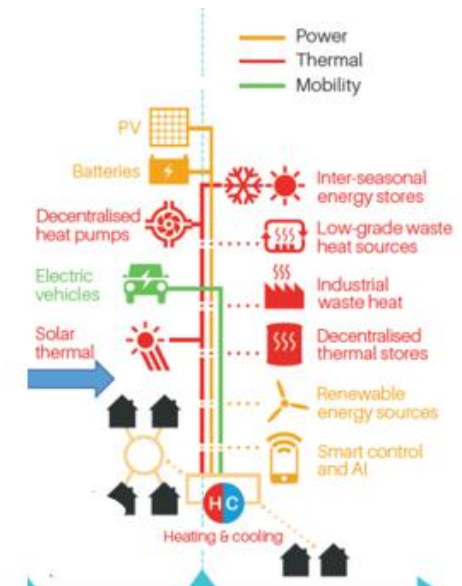
What we're Doing

- Assessing what technologies can help us manage our peak energy demands



What we're Planning

- An integrated, smart local energy system where buildings and transport interact with fluctuating sources of supply to maximise renewable energy use



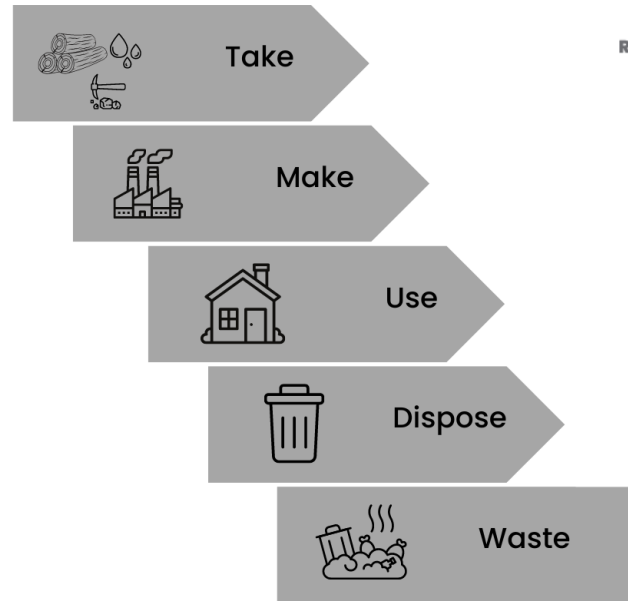
CIRCULAR ECONOMY

Hayley Lambert
Sustainability Champion (Circular Economy)

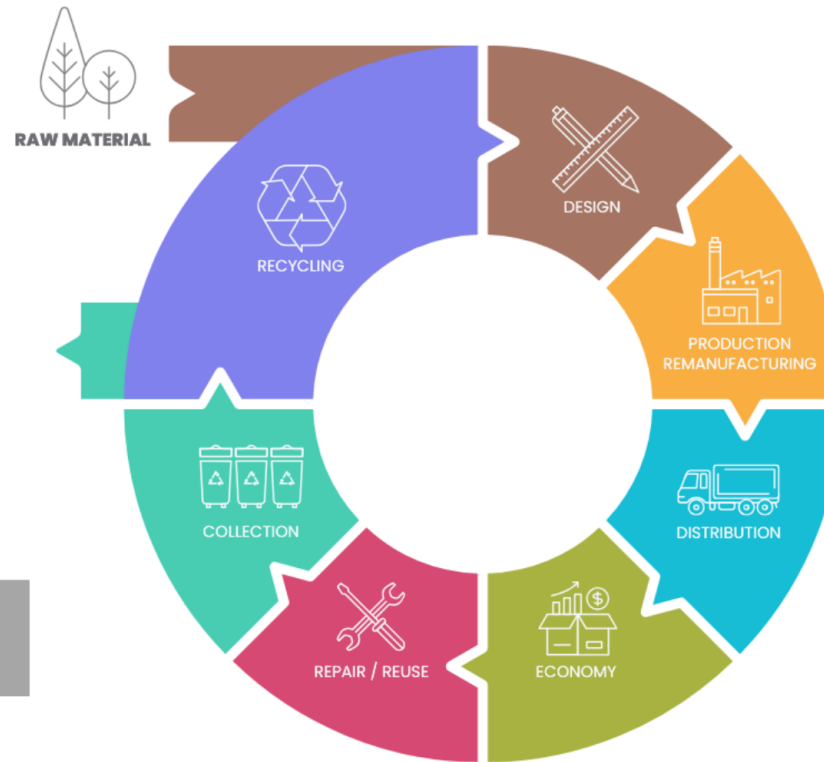


What is Circular Economy?

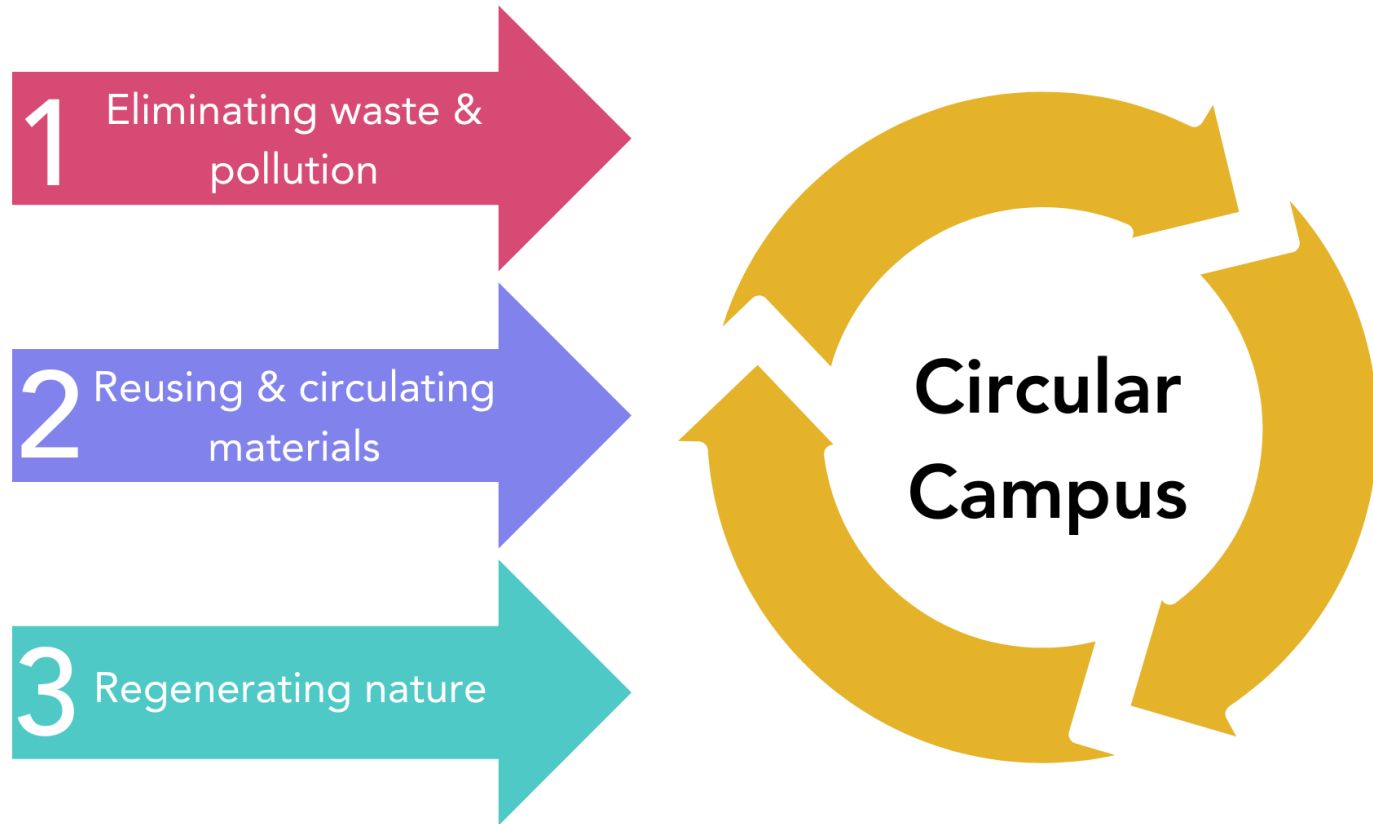
Linear economy



Circular economy



What is Circular Economy?





Today, the world produces over 2.1 billion tonnes of solid waste, and that's expected to grow to 3.8 billion tonnes by 2050. Only 7.2% of materials cycled back into economy globally.



Warwick Swap



Workwear Wardrobe



Bike Sales & Maintenance



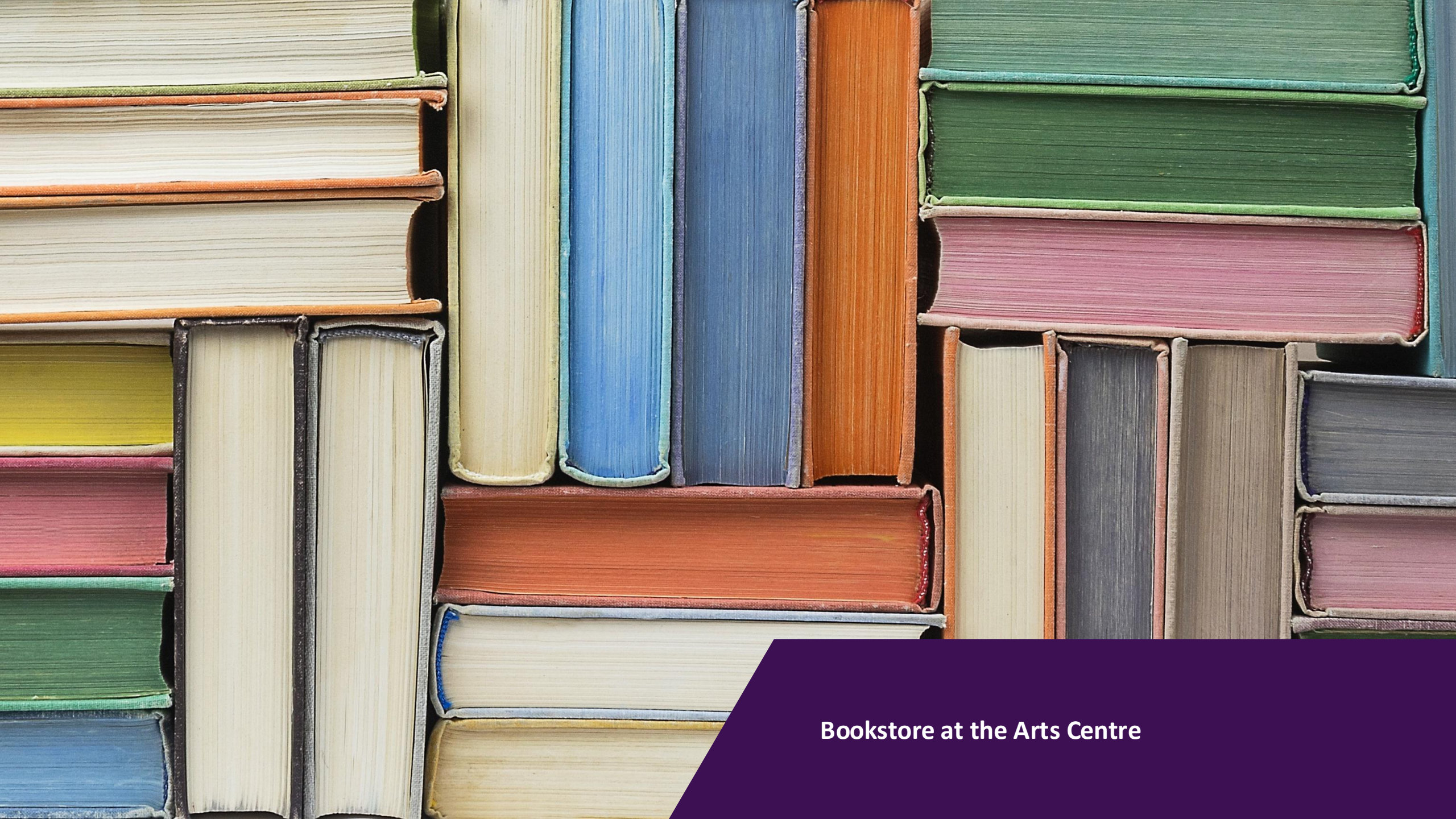
Coffee Grounds Composting



Donation Drive



Kitchen Kit Market



Bookstore at the Arts Centre

Q: How many tonnes of items do you think we collected during our Donation Drive in the 2023/24 academic year?

A: 4 tonnes

B: 8 tonnes

C: 17 tonnes



Over 8 tonnes

Being More Circular in Our Everyday Lives

What can we do?

Have a 'Buy Less' mindset...

- Do we really need all of the items that we buy?
- Think about how and where things are made.

Swap the Way You Shop...

- Go for second hand and refurbished before purchasing brand new.
- Reduce the impact of tech by keeping it for longer (phones & laptops).

Keep using your reusables...

- Keep things in use for as long as possible.
- Be good at using your water bottle, coffee cup and lunch box.



Being More Circular in Our Everyday Lives

Use It Again, and Again...and Again

Repair & Refurbish

- Many household appliances can be repaired, they often don't need to be replaced.
- Consider purchasing refurbished products. They often still have a warranty and can save you a fortune!


Repurpose

- Get creative and give something a second life.
- Pass your unwanted item onto someone else who can use it.



Be a Recycling Hero!

- Dry Mixed Recycling
- Glass Recycling
- Cardboard Recycling
- Food Waste Recycling (coming soon)
- General Waste

An illustration of a woman with dark hair and a pink top, looking thoughtful with her hand on her chin. She is holding a pizza box with the word 'PIZZA' written on it. A large thought bubble above her contains text. The background is yellow with a white diagonal stripe.

Am I really going to put this greasy, sauce-covered box in the recycling in the hope of lessening my eco guilt?! Well, it can't hurt to try...

Don't forget – all items must be clean!



**DO I REALLY MAKE A
DIFFERENCE?**

Bike Sale



Bike Sale

25/9 & 2/10

QUALITY REFURBISHED
BICYCLES

Where?

WARWICK UNIVERSITY
UNIVERSITY ROAD
(OUTSIDE THE HUMANITIES BUILDING)
W3W.CO/STACK.BECOME.SINCE

When?

WED. 25TH SEPT & 2ND OCT
STARTS 11AM, FINISH 2PM

ADULT BIKES PRICES FROM £60.00

All bikes have been refurbished and come with a 1 month warranty excluding wear and tear

 @RECYCLE_YOURCYCLE

BIODIVERSITY

Katherine Mayfield
Sustainability Champion (Ecology & Biodiversity)



Credit: Paul Thompson, Grounds and Gardens

Campus background

- Two campuses – 505 hectares of land
- Wealth of habitats – woodland, mature trees, hedgerows, lakes, ponds, brooks, meadows and open farmland



What species have not been recorded on campus?

A = Kingfisher

B = Hedgehog

C = Green woodpecker

All of them!



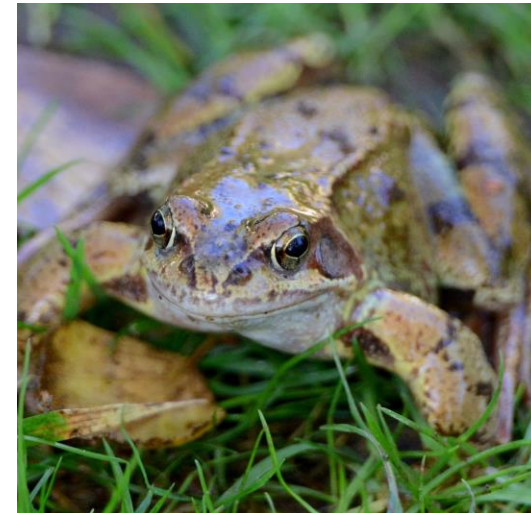
Biodiversity strategy

- Protect, create and enhance campus biodiversity including through:
 - Woodland and hedgerow creation and tree planting
 - Biodiverse planting and wildflower meadow creation
 - Green infrastructure such as roofs and walls
 - Wetland management
- Ensure a minimum of 10% increase in biodiversity for all projects
- Encourage everyone to engage with the nature environment



Habitat creation – the benefits

- Provide shelter for a wealth of wildlife
- Link up habitats creating wildlife corridors
- Provide food source – berries for birds, nectar for pollinators
- Water quality and flood management
- Carbon storage
- Supports health and wellbeing



Credit: Paul Thompson, Grounds and Gardens

Habitat creation

Projects undertaken by the Grounds team and volunteer sessions

- Hedgerows planted = 1,500 metres
- Hedgerows layed = 1,500 metres
- Trees planted = 2,200
- Wildflower areas created = 10,500 square metres
- Bug hotels = 15 made and installed
- Hedgehog homes = 5 made and installed



**How many square metres of
wildflower turf was planted on
campus last academic year?**

$$A = 3,000\text{m}^2$$

$$B = 4,000\text{m}^2$$

$$C = 5,000\text{m}^2$$

$C = 5,000\text{m}^2$



Species surveys and recording

Opportunities to get involved

- Small mammals – Warwickshire Mammal Group
- Hedgehogs
- Moths
- Birds – RSPB group
- Wildflowers
- Fungi
- Pond and riverfly – Warwickshire Wildlife Trust
- Reptile and Amphibians – Warwickshire Amphibian and Reptile Team
- Record sightings and learn ID on iNaturalist



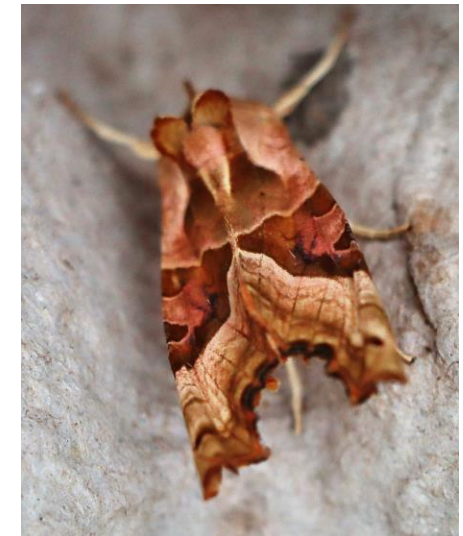
**How many species of moth have
been recorded on campus in the
past year?**

A = 30

B = 50

C = 80

C = Over 80, across five surveys in one location



Future events

A great way to explore campus and meet new people – it's great for your wellbeing!

Moth survey – 2nd October

Attend the moth trap reveal to find out what species are using campus.

Biodiversity walk (fungi) – 9th October

Explore campus and use the iNaturalist app to identify fungi species on campus.

Litter pick – 16th October

Help make campus safe for wildlife and meet new people .

Small mammal survey – TBC

See the small mammals that are living on campus with members of the Warwickshire Mammal Group.

Coppicing – 27th November

Gain practical conservation in coppicing, an ancient form of woodland management, which boosts biodiversity.

Hedgerow planting – 4th December

Take part in the CPRE Hedgerow Hero Campaign and get involved in a local hedgerow planting session



Get involved!

SUSTAINABLE TRANSPORT

Graham Hine – Senior Transport Services Manager

Daniel Sanchez – Transport Experience Coordinator



Transport & Mobility Strategy

The vision for Transport and Future Mobility at Warwick is based on the following themes:

- **Reduce Solo Car Trips:** Decrease the number of solo car journeys to and from campus
- **Enhance Accessibility for everyone:** Ensure easy campus navigation for all, especially those using sustainable transport
- **Improve Campus Mobility:** Develop infrastructure for efficient movement and better wayfinding
- **Promote Behavioural Change:** Encourage and incentivise changes in travel behaviour to support mobility transformation
- **Offer Diverse and Sustainable Transport Choices:** Provide alternatives to private car dependency for all users
- **Support Innovative Mobility Solutions:** Develop and introduce creative and integrated solutions for future mobility
- **Enhance Environmental Sustainability:** Prioritise sustainable transport to improve the campus environmental impact

Knowledge check

What percentage of Warwick's total Carbon Emissions is produced by Transport?

- a) 18%**
- b) 29%**
- c) 47%**

What percentage of all staff and students drive to the University on a regular basis?

- a) 30%**
- b) 50%**
- c) 70%**

How many buses arrive to the University in a weekday during a term time?

- a) Less than 100**
- b) Between 100-200**
- c) More than 200**

West Midlands Cycle Hire

- A regional bike hire scheme operated by Transport for West Midlands introduced at Warwick in 2021
- We have 18 stations across campus
- The Cycle Hire scheme supports our promotion of **active travel**



Since launch...

- 148,019 rides completed on campus
- 230,608 miles travelled
- 88,321Kg CO2 saved

Local Bus Services

- **Main bus operators:** National Express and Stagecoach
- **Key bus services from Coventry:** 11, 12x and 14
- **Key bus services from Leamington Spa:** U1, U2 and 11
- **Fares and passes:** Both operators offer various fares and payment options, with bus passes available for students and staff

The University engages with both operators regularly to review and improve bus travel and develop new services to and from campus.



353 buses arrive to the University in a weekday during a term time

West Midlands Bus Scheme

Special offer for students and staff

Free 4-Week Regional nBus ticket, which allows to travel on **any bus in the West Midlands bus network.**

Students

- Sign up before midnight of Tuesday 24th September



Staff

- Sign up before midnight of Sunday 6th October



West Midlands Bus on Demand

- **A scheme launched in 2021** operating in Coventry by Transport for West Midlands
- **A flexible bus service** which doesn't follow a specific route or timetable
- **Ride passes** are available as either 12 or 30 bundles
- **The service uses the West Midlands Bus On demand app** which enables you to book a ride, check availability, pay and track the bus
- **One free ride using promo code WELCOMEWEEK24**



You can add up to 9 people to your journey for £1 each





Mode of travel

We understand that getting to and from campus efficiently and sustainably is essential for our students, staff and visitors. Whether you're a seasoned commuter or exploring new sustainable transportation options, you'll find everything here to help you navigate your campus journey.



Pedestrians

Pedestrians →



Cycling

Cycling →



Buses

Buses →



Cars

Cars →



Taxis

Taxis →



Motorcycles

Motorcycles →



Coaches

Coaches →



E-Scooter

E-Scooters →



Trains

Trains →



Planes

Planes →



Scan the QR code for the latest transport information at The University of Warwick



If we are to be credible global citizens and leaders, we need to be prepared to roll up our sleeves, get involved and prove that change can happen.

Professor Stuart Croft (Vice-Chancellor), *The Way to Sustainable*

We need your support!





THANK YOU!

ANY QUESTIONS?