

Environmental Sustainability

WARWICK



@WarwickUniSust

Become one of our Green Champions [here](#).

Mini Series #13
19/06/20

LEAMINGTON SPA HAS IMPLEMENTED MEASURES TO ENABLE SOCIAL DISTANCING, CYCLING AND WALKING.

Find out about changes to road layouts in Warwickshire [here](#)



Via Adam Tranter (Twitter)

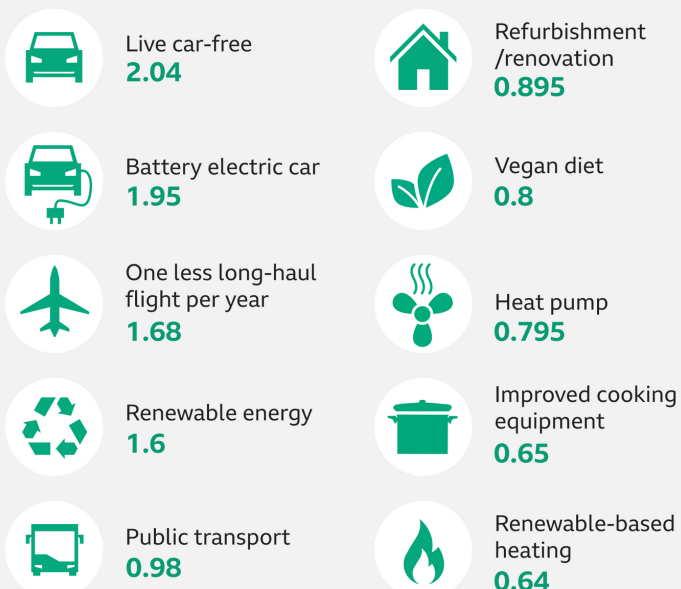


WWF and Google Partner on Fashion Sustainability Platform

Google and WWF Sweden have partnered up to enable more responsible sourcing decisions for businesses in the industry. The focus is on the raw materials that designers and businesses use to make clothes such as cotton and viscose, drawing on the work WWF Sweden has done with Ikea on a project analysing the risk and impact of various textiles raw materials. This platform will analyse the materials and their sources, taking into account factors such as water scarcity and pollution, as well as estimating impacts on greenhouse gas emissions,

TOP OPTIONS FOR REDUCING YOUR CARBON FOOTPRINT

Average reduction per person per year in tonnes of CO2 equivalent



Your carbon footprint is the amount of greenhouse gases that you produce as you live your life.

Electricity and heat generation is the largest single source of emissions globally.

Find out how big your environmental footprint is using the [WWF calculator](#).

What can you do to reduce your footprint? By doing an energy audit in your home you will be able to identify how you use or waste energy and how you can be more energy efficient. Learn about what else you can do [here](#).