



SUSTAINABLE WAY TO SUSTAINABLE

A circular graphic with the text 'SUSTAINABLE WAY TO SUSTAINABLE' arranged in a circle. The words are in a bold, black, sans-serif font. Small chevrons in blue, green, and red are interspersed between the words. The background features large, stylized chevrons in green, blue, and red.

Our approach to addressing sustainability and the UN SDGs

THE WAY TO SUSTAINABLE

How to get to a truly sustainable future

The University of Warwick is playing its part in tackling the climate emergency. Building on our existing research and education programmes and our connections to industry and society, we're focusing on The Way to Sustainable – the real-life implications of creating a sustainable future and the practical challenges of getting there.

“Meeting the needs of the present without compromising the ability of future generations to meet their own needs.”

UN World Commission on Environment and Development



Key Facts



- In 2021, for the first time ever, Warwick achieved the official ‘**Non-governmental Observer Status**’ and sent a delegation of over 20 to **COP26**
- Since October 2021, **100%** of the electricity purchased by the University has been from green sources
- In 2020/21 we generated **50%** of our electricity and **100%** of our own heat on campus through an efficient Combined Heating and Power system
- Warwick’s Scope 1 and 2 carbon emissions, relative to income, reduced by **52%** between the academic years 2005/06 and 2020/21
- Over **1,000** Green Champions giving our community a voice on how we embed sustainability
- Since 2014, **100%** of our major campus new builds have **photovoltaic arrays** installed on them to support the generation of electricity from the Sun
- Our renewable energy sources generate enough power to run **263 homes for a year** (based on 3,900kWh/household annually). The area they cover is equivalent to 46 tennis courts or 1,048 parking spaces
- In 2021, we **planted 1200 new trees**. In 2022, we **sowed 500m2 of wildflower meadows**

Our approach on a page

Frames: the way we think



Lead by Example:

Be the change we want to see



Guided by insight:

Harness expertise and knowledge



Going further than Net Zero:

Address broader challenges



Powered by the economy:

Develop viable solutions to ensure permanency



Embraced by people and communities:

Enable everyone to be more sustainable

Goals: what we will achieve



Progress our contribution to the UN Sustainable Development Goals through research



Embed sustainability into the Warwick curriculum



Realise ecology & biodiversity net gain



Get to Net Zero carbon emissions from direct emissions and the energy we buy by 2030 (Scope 1 and 2)



Reach Net Zero carbon for both direct and indirect emissions by 2050 (Scope 1, 2 and 3)

Paths: how we achieve it



Research

Truly interdisciplinary and innovative research across the social sciences, arts and humanities, and science, engineering and medicine.



Education

The Warwick education will enable current and future generations to lead efforts to tackle climate change, ensuring Warwick students are able to develop themselves and effectively influence others.



Engagement

Work with local, regional, national, and international partners, as well as communities to have an impact on planetary sustainability.



Operations

Improve and evolve our own operational activities to become a more sustainable university over time, taking our learnings into the wider world.

Our emissions explained

Direct

- Warwick's **Scope 1** carbon emissions arise from **direct consumption of fossil fuels and greenhouse gases** escaping from our operations. These fuels include natural gas, liquid propane gas, petrol, and diesel.
- >95% of our Scope 1 emissions come from burning natural gas to provide heat and generate electricity

Indirect

- **Scope 2** indirect, carbon emissions arise from the **fossil fuels burnt by others to supply us with energy**. Historically, all our Scope 2 emissions arise from our purchased electricity.
- **Scope 3** emissions are not produced by Warwick directly and are not the result of activities from assets owned or controlled by the University. Instead, they are **emissions connected to our value chain** such as business travel, commuting, purchased goods and waste.



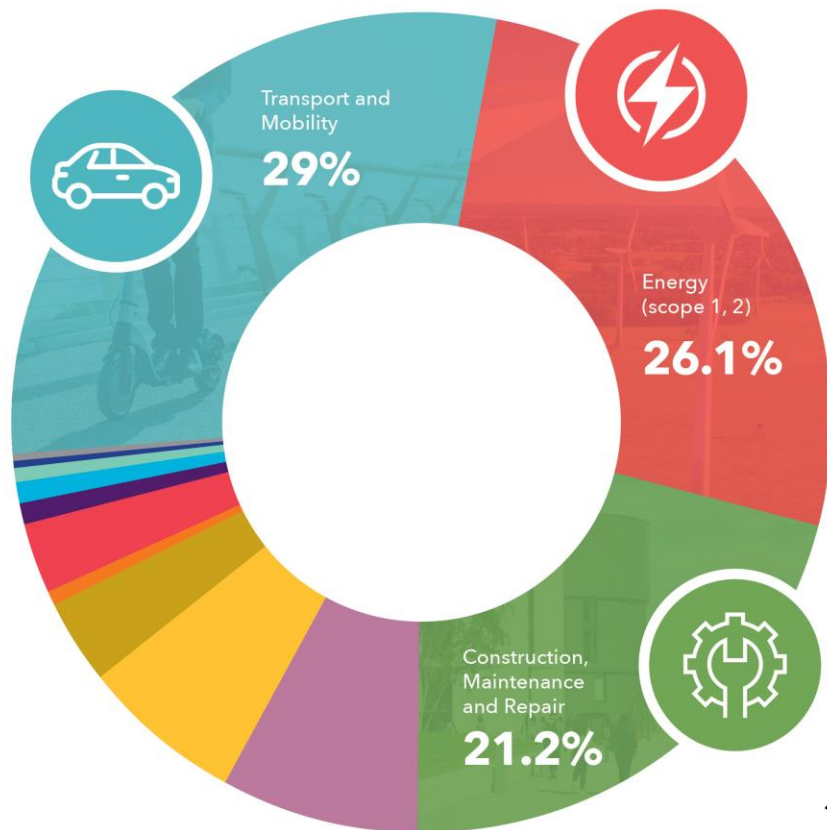
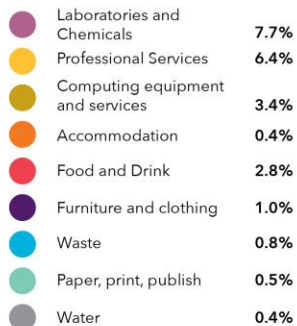
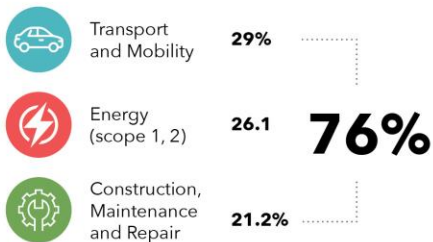


Get to Net Zero carbon emissions from direct emissions and the energy we buy by 2030 (Scope 1 and 2)



Reach Net Zero carbon for both direct and indirect emissions by 2050 (Scope 1, 2 and 3)

University of Warwick Emissions (scopes 1, 2 & 3)



WAY TO SUSTAINABLE

Carbon

Goal

Net zero carbon from direct emissions and the energy we buy by 2030

Target

Reduce Scope 1 (direct) emissions by 20% by 2025 and by 80% by 2030 based on a 2018/19 baseline year

KPI

- % of renewable energy we generate ourselves on campus
- Reduction in overall energy use
- Amount of gas purchased by the University as a % of total energy purchased

Current

Energy is 26.1% of the University's total carbon emissions

Since October 2021, 100% of our purchased electricity has come from green sources (Scope 2)

Net zero carbon from direct and indirect emissions by 2050 (Scope 1, 2 and 3)

Transport & Mobility to achieve Net Zero by 2050 (Scope 3)

- % change in use of sustainable modes of transport for commuters to/from campus
- Reduced business air miles

Transport & Mobility forms 29% of total university carbon emissions

Net Zero carbon developments for all new builds

- Embodied carbon intensity of new developments
- Thermal performance of buildings
- Overall % reduction in energy use
- Overall % reduction in space footprints

Building construction, maintenance and repairs contribute to 21.2% of the University's total carbon emissions

Build and refurbish our stock in an environmentally responsible manner, considering the whole life cycle carbon emissions from our real estate

Biodiversity

Goal

Enhance campus biodiversity

Target

Minimum 10% net gain compared with pre-development

KPI

- 10% biodiversity net gain on all future projects within the campus

Current

Natural England Biodiversity Metric is currently being developed and once fully adopted will become our principal calculation tool

Water

Goal

Reduce total water consumption

- Continuous improvement in our water use efficiency per annum
- Performance in relation to relevant sections of ISO4001

Between 2015 and 20/21, Warwick's average annual water consumption was 563,000m3. Of this total 40% was used in residential estate and 60% was used in non-residential estate

Waste

Goal

Reduce the total volume of waste produced and, if that's not possible, reuse and recycle

0% to landfill

- Progress against a target of doubling the volume of donations by 2025 (reuse)
- Progress against a 50% target increase in recycling by 2025 and 65% by 2035 (Recycling/General waste) (recycle) the % recovery of secure access to waste to energy and maintenance of 0%

We have over 130 waste streams which include glass, cardboard, plastic, food, pots & pans, and clothing

Goal

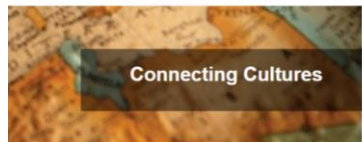
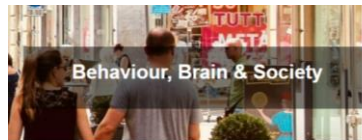
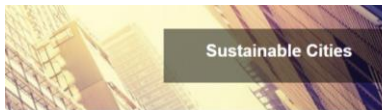
Progress the University's contributions to the UN SDGs

KPI

- Number and range of staff, and PhD students, engaged with sustainability related research
- Increase in research income for challenge-led research with transformative sustainability impact (UN SDGs)
- Indicators of sustainability research impacting on policy, business, and government
- LEAF accreditation for research facilities

Current

2nd SDG report produced
Preparing for THE Impact Rankings
Mapping research and baselining data



Goal

Enable current and future students to lead efforts in tackling environmental, social, and economic challenges as reflected in the UN SDGs

Enable the development of entrepreneurial skills in students, nurturing new ideas and innovations that boost sustainability in action

KPI

- Student uptake of sustainability related programmes and modules
- Student uptake to skills and co-curricular offers
- Scale of sustainability-related volunteering amongst student community
- Growth in virtual mobility
- Student feedback about our offer

Current

Mapping and baselining

LEVERHULME
TRUST

Are you one of the next generation of transdisciplinary sustainability researchers?



WARWICK
AWARD
STUDENT OPPORTUNITY

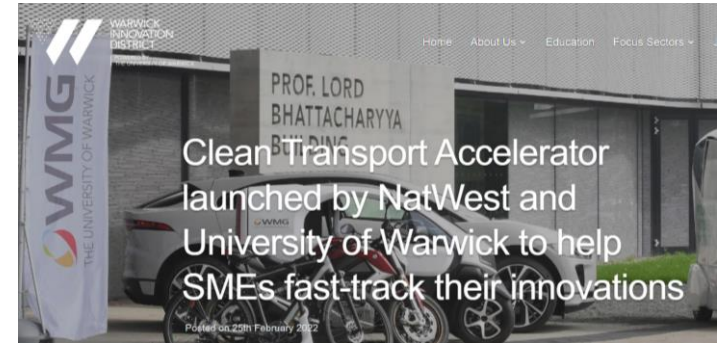


Goal

Broaden and deepen relationships with different partners and communities locally, regionally, nationally and internationally to achieve positive sustainability outcomes

KPI

- Real-world change and influence realised through Warwick's engagement with audiences and stakeholders
- Reach and impact of our sustainability focused engagement events amongst communities and stakeholders
- Range, quality, and outcome of the partnerships we form and maintain to address issues of sustainability in our region, country and globally
- Value of opportunities brought to Warwick through new or extended operational or commercial partnerships



SUSTAINABLE >>>>>>>>>>>>
COVENTRY AND WARWICKSHIRE
 RESEARCH FOR TRANSFORMATIVE CHANGE

Embraced by People and Communities

To support embedding and enabling sustainability at Warwick we believe that:



positive sustainable behaviour needs to be an established norm



we should be adopting a '**global citizenship**' attitude, accepting we all have a role to play in working together



communicate well with each other matters, as does being supportive of each other



we need to **explain** when and why we can't take, what feels like, the immediate sustainable solution in front of us



we need to **reduce our impact on the planet** and make efficient use of natural resources, taking responsibility and accountability for ourselves



we need to **be smart, efficient, agile, flexible,** and just in our approach



SUSTAINABLE WAY TO SUSTAINABLE

A circular graphic with the text "SUSTAINABLE WAY TO SUSTAINABLE" arranged in a circle. The word "SUSTAINABLE" is at the top, "WAY" is on the right, "TO" is at the bottom, and "SUSTAINABLE" is on the left. Small chevrons in blue, green, and red are placed between the words. The background features large, stylized chevrons in green, blue, and red.

Our approach to addressing sustainability and the UN SDGs