

WARWICK INSTITUTE OF ENGAGEMENT

warwick.ac.uk/wie

REPORT
November 2020 - February 2022

WARWICK
THE UNIVERSITY OF WARWICK



CONTENTS

Message from the WIE Directors	4	IV. WIE Creating the Right Opportunities for Collaboration with the Public	37
I. Introduction	6	A. Promoting Collaboration.....	39
A. Overview of the Aims of WIE.....	7	1. Building Community Partnerships.....	39
B. The WIE Team	8	2. Further funding opportunities in collaboration with Connecting Cultures GRP	41
II. WIE Acting as a Pan-University Hub for Public Engagement	11	3. Collaboration and Co-Production Fund 2021-2.....	42
A. Overview of Fellowship.....	12	B. Public Engagement Events Organised by WIE....	44
B. Learning Circles.....	15	1. ESRC Festival of Social Sciences 2020.....	44
III. WIE Building Capacity and Expertise for Engaging with the Public.....	29	2. Resonate Festival 2021-2022.....	45
A. Building Staff Capacity	31	3. Coming soon in April 2022: the Resonate Campus Festival.....	48
1. Online Training - The WIE Skills Festival	32	V. Plans for the Future	49
2. Embedding Engagement into Existing Training	32	VI. WIE Fellowship	50
3. What's next for staff training?.....	33		
B. Building Student Capacity	34		
1. Student Training.....	34		
2. Online Training - The WIE Skills Festival	34		
3. Embedding Engagement into Teaching.....	34		
4. Placements in WIE	35		
5. URSS, ICUR and Engagement.....	35		
6. What's next for student training?.....	35		
C. Warwick Award for Public and Community Engagement	36		



MESSAGE FROM THE WARWICK INSTITUTE OF ENGAGEMENT DIRECTORS

Warwick - since its inception in 1965 - has always been an outward-looking university, and the Warwick Institute of Engagement (WIE) is the latest development in that outward-looking philosophy. The Institute works both to improve how the university involves the public, communities, key influencers and decision makers in our pursuit of knowledge and understanding and to improve the ways the university communicates its story and value to these groups. In so doing, the Institute enables the university to engage more profoundly and sustainably locally, regionally and nationally, and thus contributes to the achievement of the university's 2030 strategic goals, its Grand Challenges and its ongoing success in response to the Government's Knowledge Exchange agenda.

In its first 12 months of operation (against a background of the Covid pandemic, home working and digital engagement), working with staff, students and community partners, the Institute achieved an incredible amount as the infographics shown on page 5 demonstrate.

In the 4 months since its first anniversary, the Institute has continued to work with more staff and students as we have appointed our 2nd round of Institute Fellows; as well as with a greater number of regional partners to support an ever-widening range of public and community engagement projects, collaborations and co-production ventures; as well as championing the development and recognition of public and community engagement expertise within the university. At the same time, we have also been working hard to develop plans for an ambitious new STEM Public Engagement hub at the heart of the university's new campus Science Precinct as part of the university's Grand Challenge to take its STEM research, teaching and engagement to the next level.

As a result of all this activity, we are delighted to see emerging, particularly from our public engagement

Resonate Festival programme in association with Coventry City of Culture celebrations, clear evidence for the impact of our work.

37% of Resonate Festival attendees commented in feedback that Resonate events have improved how they feel about living in Coventry and over two thirds of attendees commented that they feel more positive about the university and the impact that our work has on society as a result of attending Resonate.

We are delighted to offer here the Institute Report covering in detail the first 16 months of the Institute's activities that have contributed towards these important statistics, as well as an outline of our plans for the future. More detail can we found about all our activities on our website: www.warwick.ac.uk/wie.

Finally we would like to offer our sincerest thanks to the Institute core team and Fellowship for their hard work and enthusiasm, as well as to our wider university and regional partners for their collaboration and encouragement, who together have made all of this possible.



Prof Michael Scott and Andrew Todd
Warwick Institute of Engagement Directors



**CELEBRATING ONE YEAR OF THE
WARWICK INSTITUTE OF ENGAGEMENT**



84
live events delivered locally

2,500
live audience members

3,446
online event views and growing!

170+
staff and students making it happen

20
digital activities and resources created

40
collaborations with professional artists and creatives

57
partnerships with local organisations

£10,000
given to

11
community groups to build new working relationships

99
Fellows appointed working across

48
hours of live training events

700+
visits to our digital training pages

63
student URSS projects featuring public engagement

416
staff / students took part in WIE training

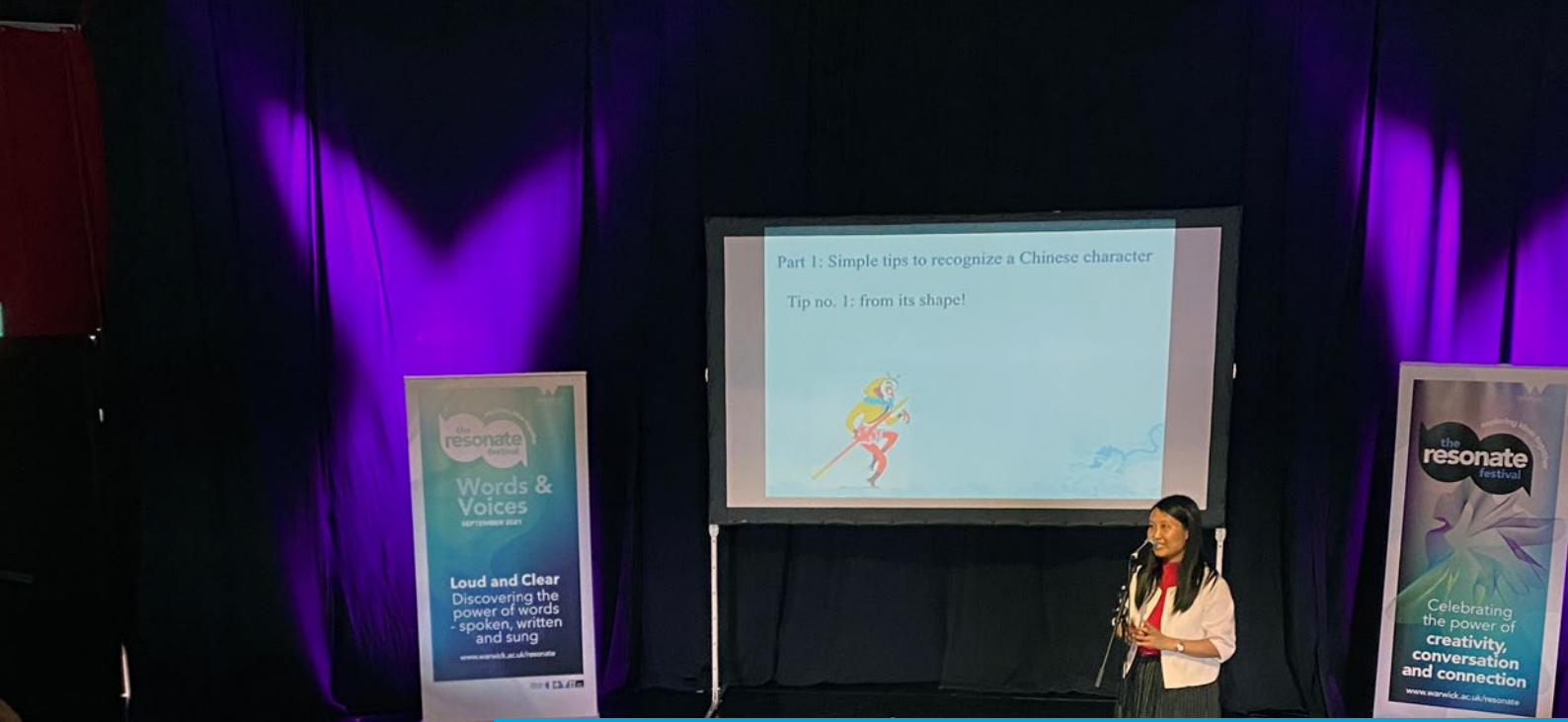
19
digital learning resources developed

23
students took our "Public Engagement: Connecting Communities to Research" IATL module

14
learning circles

[FIND OUT MORE WARWICK.AC.UK/ONEYEAROFWIE](https://www.warwick.ac.uk/oneyearofwie)





INTRODUCTION



OVERVIEW OF THE AIMS OF WIE

WIE was soft launched in November 2020, and formally instituted in August 2021, as part of the university's Strategy Group, reporting to the Registrar. As such, WIE exists to help ensure that the university can meet its **2030 Strategic core purposes of Research and Education as well as its strategic priorities of Innovation, Inclusion, Internationalisation and Regional Leadership**.



"I'm thrilled to see the launch of the Warwick Institute of Engagement and want to offer my thanks and support to all the staff and students who get involved.

"The Institute supports the university's 2030 strategy in a number of important ways.

"It helps us play a regional and national leadership role as a modern university working with local communities to deliver place-based and people-focused results; it helps us drive innovation through maximising the exchange of knowledge between the university and society to enrich learning and innovation, stimulate innovation and partnerships; it gives us a stronger role in championing inclusion - through public discussion,

knowledge curation and generation; it enhances the teaching experience we offer Warwick students, as well as contributing towards skills and employability; it informs our research and sharpens our impact, and it gives us a genuine platform for Warwick to play our part even more strongly in national and international debate, social, economic and policy development.

"Working hand in hand with our communities is strategically critical for Warwick. Now, in 2020, it is more important than ever for universities to look to nurture future generations passionate about research and innovation, and to listen to public concerns and aspirations."

Sir David Normington, Chair of university Council, November 2020

WIE achieves its goals by working in three main ways:

- ▶ **WIE acts as a pan-university hub for joined-up discussion and co-ordination of public engagement activities to align with the university's strategic priorities, Grand Challenges, and response to the Government's Knowledge Exchange agenda.**
- ▶ **WIE builds capacity and expertise amongst Warwick staff and students to ensure they can communicate and collaborate with the wider world in the most compelling and effective way possible.**
- ▶ **WIE creates the right public and community engagement opportunities for university staff and students to collaborate with the public, communities, key influencers, and decision makers.**

The Report is organised around these three key strands of WIE activity.



THE WIE TEAM



The initial composition of the WIE team included the pre-existing university public engagement Team and its Director, Jane Furze, alongside Prof Michael Scott, from the Classics and Ancient History Department, as Co-Director, and Dr Rachel Edwards, from the Physics Department, as Associate Academic Director. This core team has since grown and adapted: Jane has now been replaced by Andrew Todd, who is Co-Director of WIE as well as Director of the Regional and Community Engagement teams; Prof Michael Scott and Dr Rachel Edwards have now been officially bought out from their Departments into their WIE roles; a new full time Associate Director on the Professional services side is about to start and a new full time WIE Administrator now underpins all our activities. We were also delighted to be selected as a placement for the first round of the new Warwick Graduate Intern scheme, with Beth Russell joining us from October 2021-May 2022.

The need to combine both Academic and Professional services personnel within the core team was a key driver behind the initial creation of the Institute, reflecting our belief that delivering good public engagement requires both kinds

of skills sets and experience. At the same time, we recognised that a small core team could only achieve so much and so, at the outset, we also envisaged the Institute recruiting a wider group of Fellows from across Professional services and Academic staff within the university who had experience in, and passion for, public engagement, to work with us. Our first call for Fellows in January 2021 resulted in over 70 staff being appointed - underlining the desire and need for the Institute within the university. That number, as a result of our 2nd call for Fellows in February 2022, has now grown to over 110.

In addition to our staff Fellows the Institute has also appointed, as of February 2022, over 15 Warwick Undergraduate and Postgraduate student Fellows. The vision for the Institute stemmed from a belief that public and community engagement is a matter for the whole university community, and that, in addition, such activities - and the skills gained from them - should be an important part of the Warwick student education. As such, our students, as much as our staff, have been at the heart of WIE activities since day one. Here you can read a little more about the core WIE team, and in the next section of the report, hear more about our Fellows and the work they do.





Michael Scott - Director of the Institute

Michael is the Academic Director of the Institute and a Professor in the Department of Classics and Ancient History at Warwick and an Honorary Citizen of Delphi, Greece. He is a National Teaching Fellow and Principal Fellow of Advance HE and believes passionately in making the ancient world as accessible as possible, acting as Director and Trustee of Classics for All, and as President of the largest regional branch of the UK Classics Association. He regularly talks in schools around the country, writes articles for national and international newspapers and magazines, participates in BBC radio shows and podcasts, and facilitates engagement with the ancient world via a suite of social media channels. He is the author of several successful popular history books and has written and presented over a dozen TV series about the ancient world for History Channel, National Geographic, BBC and ITV. In recognition of his engagement work, Michael was delighted to be reincarnated as a Lego Classicist figure in 2018. Michael's commitment to, and passion for, engagement has been a key driver for the creation for the Institute.



Andrew Todd - Director of the Institute

Andrew is the Professional Services Director of the Institute as part of his role as Director for Regional Engagement. He leads the university's local growth, civic and community activities in the West Midlands. His role includes strengthening partnerships across the West Midlands and ensuring university is embedded in its region. It also includes engaging in the development of local economic and community strategies so the university can contribute fully to local economic, social, and cultural growth. Andrew has nearly 20 years' experience working between universities, business and the public sector and his career includes secondments to Advantage West Midlands and the West Midlands Combined Authority focused on bringing the strengths of regional universities to support the West Midlands.



Rachel Edwards - Associate Academic Director of the Institute

Rachel is a Reader in the Department of Physics. She is passionate about engagement with schools, and the need to reach out to children of all ages to show them what a scientist does, and the wide range of people who are scientists. She loves giving public lectures and has been involved in many of the Warwick Christmas lectures - any excuse to play with liquid nitrogen on stage! She also engages with school teaching bodies, helping to give new teachers different examples of where science and engineering knowledge is used in active research.



Helen Wheatley - Director of the Institute City of Culture Programme

Helen is Director of the Warwick Institute of Engagement's City of Culture Programme. She is Professor of **Film and Television Studies** and is also co-founder and current director of the **Centre for Television Histories** and co-lead of the **Connecting Cultures GRP**. She works collaboratively with archives and curators to engage the public with the history of British broadcasting, and has twice been awarded the university's prizes for impact/community engagement for this work. Her most recent book, **Spectacular Television: Exploring Televisual Pleasure** (IB Tauris, 2016) won the BAFTSS Award for Monograph of the Year in 2017.





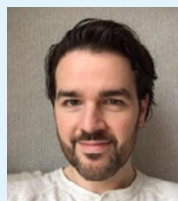
Naomi Kay - Engagement Officer

Naomi is an experienced engagement professional with a background in event and project management. She has delivered a number of university festivals, including the Science Family Day held to celebrate Warwick's hosting of the British Science Festival in 2019. She works on a range of strategic projects for the team, including leading on the creation and launch of our first student facing public engagement module through IATL. She is passionate about empowering staff and students to develop their engagement expertise and ensuring Warwick activities are enjoyable and accessible for a wide range of people.



James Brown - Public Engagement Project Officer

James works on supporting large scale public engagement projects which stretch across the university, helping to coordinate between internal and external stakeholders, and project managing a variety of events and activities. He has experience of running national public engagement campaigns, producing educational resources for a variety of audiences, and engaging varied publics through a range of approaches including festivals, artist collaborations, blogs, online content, performances, workshops, and debates. At Warwick he has worked on delivering the British Science Festival and is currently helping to deliver the Institute's Resonate Festival.



Josh Oakes - Administrator

Josh is an experienced administrator with a background in business governance, project management and people development. He is passionate about people and creating inclusive teams. He enjoys enabling productivity through streamlined systems that ensure we can focus on what matters.



Beth Russell - Graduate Management Trainee

Beth is a Graduate Management Trainee on Warwick's three-year Project Management Graduate Scheme. She began her first eight-month placement, in the Institute of Engagement, in October 2021 and is primarily focused on the organisation of the Resonate three-day campus festival in April 2022. When Beth leaves the WIE team in May 2022, she will continue her connection with the Institute in her role as a Fellow.





WIE ACTING AS A PAN-UNIVERSITY HUB FOR PUBLIC ENGAGEMENT



Many individuals across the university have undertaken successful public engagement work within their particular disciplines for many years. However, they often did so unaware of the work of others across the university, and as such there was no mechanism by which our public engagement work could be more than the sum of its individual parts. The Warwick Institute of Engagement offers a pan-university forum in which academics, professional services staff and students who are passionate about public engagement can come together as Fellows of the Institute to share best practice and discuss and collaborate on joint projects and ideas. As a result, the Institute provides a mechanism whereby the collective experience and knowledge of our university's public engagers, in conjunction with that of the WIE Core team, can be focussed both in response to the increasing number of ways in which this university has chosen to embed public and community engagement at the heart of what it does, as well as in response to the increasing number of ways in which the UK and International Higher Education environment is shifting to prioritise public engagement and the wider 'Knowledge Exchange' agenda.

Below you can read more about our Institute Fellows and our different categories of Fellowship, as well as about some of their exceptional individual achievements (and a complete list of our Fellows is available at the end of this report). Together, our Fellows work across 14 Learning Circles. Each Learning Circle is dedicated to a particular aspect of the Institute's public engagement work, is chaired by a senior Institute Fellow and has an Institute Core team member assigned as its 'link officer'. The Learning Circles work and meet in different ways in response to their particular areas of focus, and you can read more about the work and achievements of each Learning Circle to date below. The Institute Core team supports across the Learning Circles and works particularly closely with them to ensure that the outcomes of the Learning Circles are then presented and embedded within the university's practices.

A key example of this is the review by Learning Circle 9 (on public engagement and Promotion) of the university's promotions criteria related to Impact, Outreach and Engagement, which has now already been accepted by the university and has gone live as part of the current 21-22 Promotions cycle, with the Learning Circle now supporting applicants to make their promotions case as effectively as possible through a series of workshops and 1-1 support.

Another great example is Learning Circle 5, which brings together a wide range of public engagement with research experience from across the university and now acts as a peer review group for research grant applications which require details plans for public engagement. In so doing, this Learning Circle is now supporting the Faculties of Arts, Social Sciences and Science, Engineering and Medicine to improve grant capture.

The Institute is also working closely with the university's STEM Grand Challenge, leading the development of a dedicated STEM Public Engagement hub within the new Science Precinct, which, when operational, will also be run by the Institute. The development of the plans for the hub, its financing and associated fundraising, is achieved again through a collaboration between a dedicated Institute Learning Circle and Core team members, working in conjunction with the wider STEM Grand Challenge team - and there is more on this particular project below in the report of Learning Circle 14.

Most recently, the Institute has also moved to appoint a series of Regional Fellows: people embedded in our region and communities with considerable experience of, and enthusiasm for, the sharing of knowledge, culture, and opportunity. They work across a wide range of fields (you can find out more below) and are united by their desire to work more closely with the university as a key player within the region. As Regional Fellows, they will be able to work with the Institute and contribute to the development of its thinking, strategies, and events programmes so that crucially the voice of our region will be at the heart of the development of our plans for working with the region.

As such, the Institute acts as a powerful enabler not only for the university's 2030 strategic goals and Grand Challenges, but also supports the university to respond proactively to the Government's increasingly important Knowledge Exchange agenda as seen through the Knowledge Exchange Framework (KEF) and the new Knowledge Exchange Concordat (KE-



Concordat). In the first iteration of the KEF, Warwick ranked in the top 10% of Universities for Public and Community Engagement, and the Institute is an important part of the university's submitted action plan going forward in response to the KE-Concordat.



OVERVIEW OF FELLOWSHIP

Back in January 2021 we opened the first call for Fellowship of WIE. We were hoping that we could appoint around 20 Foundation Fellows for two years each, to start building the Institute and get the wider university interested in what we were doing. We were overjoyed to receive so many applications, all of which were amazing and gave us a difficult decision in who to appoint. The result was the appointment of a total of 99 staff and student fellows! In the 2021-23 cohort we had;

- ▶ 32 Honorary Fellows, who were invited to join us as long-term appointments to help us to build long-term strategic relationships across the university. Some of these were members of staff who do excellent work in outreach and public engagement and had applied for fellowship, but we knew we needed them to be part of the Institute over a longer term, while others came from different areas of the university's senior management;
- ▶ 36 Foundation Fellows, who joined us for two years to drive our work forward and contribute to the growth of WIE and appreciation of engagement across the university;
- ▶ 31 Associate Fellows, who form our wider support network, joining in with Institute activities such as the Learning Circles, and who we hope will apply for full-Fellow status after their two years of Associate Fellowship is completed.

The Fellowship attracted people from across the university, with about 10% student representation split evenly across undergraduate and postgraduates. The Fellowship also reflected a good mix of the different areas of the university, with approximately 37% STEM, 16% Social Sciences, 20% Arts Faculty, 14% Cross-Faculty, and 12% Professional Services.

The Fellows are a fundamental part of the Institute. Many of them have joined our Learning Circles, looking at key issues for engagement and outreach across the university. The diverse backgrounds and career stages / paths of our

different Fellows - from Undergraduate through to Senior Professor, Laboratory Technician through to Deputy Pro Vice Chancellors - provide an essential ingredient for the success of the discussions taking place in these Learning Circles, enabling us to generate a well-rounded approach to how public engagement should fit into the university's work as well as into people's individual career paths and passions.

The Fellows and WIE team are building a community across the whole university which can support each other in their engagement activities, and then go out and support other people in Faculties and Departments who are interested in doing public engagement. We have been sharing best practice and expertise, devising new support and training for both staff and students, encouraging recognition and reward for public engagement, supporting the development of public engagement within our international networks, and pushing the boundaries of public engagement work in relation to collaboration and co-production and inclusion. Each individual Learning Circles reports on its activities and outcome below.

Our Fellows are all amazing! But there are two very clear Fellows highlights from the last year. Professor Margaret Low (WMG) was awarded an MBE for her services to public engagement and widening participation, and Naomi de la Tour (IATL) won a WATE award and was nominated for a 2021 Student Union Transforming Education Award in the Inspiration Category, for her work in part around building public engagement into her teaching and taught curriculum.

In February 2022, we welcomed our 2nd cohort of Fellows, who will serve from 2022-24. A review of Learning Circles, after their first year and a half of operation, will start in summer 2022, taking on board feedback from everyone who has been a part of WIE so far to improve what we are doing. In December 2022 we will open a new call for Fellows for 2023-25 and hope to welcome more Warwick staff and students into the WIE family.





With the addition of our new fellows, and having waved goodbye to some colleagues who have moved on to other institutions and to a number of our student Fellows who have graduated, the WIE fellowship, as of February 2022, is now made up of 146 Fellows, including:

- ▶ **41 Honorary Fellows**
- ▶ **34 Foundation Fellows**
- ▶ **23 Fellows**
- ▶ **36 Associate Fellows**

A full list of our Fellows by Faculty is available at the end of this report.

As a part of our 2022 call to Fellows we were also delighted to appoint **12 Regional Fellows** who help broaden our reach and bring perspective and expertise from outside of the university. Our first cohort of Regional Fellows are:

- ▶ **Abbie Vlahakis**, CEO of Millenium Point in Birmingham
- ▶ **Clare Wightman**, CEO of Grapevine, Coventry
- ▶ **Eilis O'Donnell**, Assistant Director of Operations for Intouniversity partnership across the Midlands
- ▶ **Francis Nielsen**, Director of Audience Engagement at Culture Coventry
- ▶ **Hardish Virk**, Communications and Development Consultant, championing diversity in cultural engagement in Coventry
- ▶ **Jonathan Branson**, Warwick District Creative Compact Manager
- ▶ **Laura Elliot**, CEO and Creative Director of the Belgrade Theatre, Coventry
- ▶ **Nor Aziz**, Member of the Board of Directors for Coventry Culture Trust and Founder of Uniting Communities
- ▶ **Paul Edmondson**, Head of Research at The Shakespeare Birthplace Trust
- ▶ **Sarah Windrum**, Board Director for the Coventry & Warwickshire Local Enterprise Partnership, Leamington Spa
- ▶ **Siobhan Harrison** - Senior Journalist, Communities and Culture BBC CWR
- ▶ **Sue Frossell**, Public Health Consultant, Coventry City Council



LEARNING CIRCLES

Learning Circle 1 - Staff Engagement Training

Chair: Des Hewitt, Foundation Fellow - Faculty of Social Sciences

WIE Team Link: Naomi Kay

Members: Rachel Edwards, Phil Jemmett, Paul Barlow, Florian Reiche, Ian Hands-Portman, Claire Rocks, Nicholas Jackson, Christopher Strelluf, Kate Astbury.

Learning circle goals/remit

- ▶ Finalise criteria / principles for recognising good quality training and public engagement exemplars for WIE training
- ▶ Encourage creativity and innovation in public engagement training
- ▶ Provide feedback and advice to develop WIE training
- ▶ Provide mentoring for other LC members where they are new to designing public engagement training
- ▶ Support development of public engagement mentoring in WIE and more broadly across the university
- ▶ Advise on how WIE training can contribute to wider university training
- ▶ Advise WIE of 'direction of travel' for training at a strategic and operational level, as appropriate

Reflections on first year of activity

Our Learning Circle meets every other month. Initial meetings were spent examining the existing state of training provision from WIE and deciding where our group could add the most value. We also supported the team in the development of the new **WIE Skills Festival** (an online interactive map that forms the new home page for training) by shaping what areas of training should be available and inputting on how online resources can be most useful for staff. Our focus over the autumn term was on developing criteria and a process for reviewing new training materials/ sessions being developed by WIE, other Learning Circles, or other contributors. This system is currently in a pilot stage before being rolled out more widely in the spring. A key role for our Learning Circle moving forward will be contributing time to reviewing resources and providing guidance/ feedback to those producing them.

We are also working on developing a mentoring programme for staff and students to be paired with mentors to support their public engagement practice development. This will be initially launched amongst WIE Fellows before being rolled out more widely later in 2022.

Our role for Warwick and the future

We believe having high quality, creative training and development opportunities available for staff is essential. The work we are doing alongside WIE is ensuring that there are a range of resources, training sessions, and one on one development opportunities that suit staff at all levels across all Faculties and Professional Services. We are excited to have the following as our three key ongoing priorities:

- ▶ Deliver a mentoring programme to support engagement practice
- ▶ Act as reviewers to support the development of new resources and training sessions
- ▶ Continue to support WIE through providing advice about the future direction of training for staff at Warwick



Learning Circle 2 - Developing the New Skills of Engagement

Chair: Chloe Agg, Foundation Fellow - Faculty of Science, Engineering and Medicine

WIE Team Link: Rachel Edwards

Members: Martine Barons, Phil Jemmett, Ian Hands-Portman, Lisa Harding, Anthony Avery, Mark Udall, Dave Harvey, Saskia Bakker, Anne-Marie Broomhall, Deborah Smith, Ross Forman, Deepak Parashar, Cansu Kuey, Elisabeth Blagrove, Rachael Kirwan, Susie Car, Graeme Currie, Jo Clark.

Learning circle goals/ remit

To find and share current good practice in new methods of engagement, and to inspire and enthuse others to undertake engagement that is new to them.

Reflections on first year of activity

One of the items our group identified early on in our meetings that we felt was important to us was addressing the confidence barrier to carrying out public engagement. This theme has continued the run throughout our work, with our focus for the conference we are currently organising on 'The New Skills of Engagement' being that of inspiring and encouraging the Warwick community to try something new to them in engagement. Our work is about getting the inexperienced to "dip a toe" and the experienced to push their comfort zones a little further. We demonstrate this in the creation of resources which show the behind-the-scenes reality of engagement, in the creation of safe practice spaces for our conference and by being a supportive community ourselves. Post-pandemic building confidence has become increasingly important as many have lost it over the months of reduced social interaction. We hope to help everyone find their confidence and grow their skills.

Some of our outcomes include:

- ▶ The creation of a map of LC1/2/3/8 interactions
- ▶ Creation of exemplar risk assessments & policies
- ▶ The creation of video editing & alumni support guidance

Plans for the year ahead

We will host our first conference on March 29th 2022. The conference will be a half day hybrid event which is aims to inspire people to get started with public engagement, or to up their engagement game by showcasing current good practice. As such our interpretation of "new" in "new skills of engagement" for this conference is that the skill is new to the participants, not necessarily cutting edge. We are building confidence, not innovations. Beyond March, we plan to host rolling monthly masterclasses to share skills and ideas.

Learning Circle 3: Guide to Promoting Events and Event Management

Chair: Anthony Avery, Foundation Fellow - Warwick Events

WIE Team Link: Naomi Kay

Members: Amanda Bishop, Kayleigh Buckingham-Pegg, Lisa Harding, Ally Caldecote, Mark Udall, Dave Harvey, Caroline Rushingwa, Cansu Kuey, Rachael Kirwan, Jo Clark.

Learning circle goals/ remit

Our Learning Circle looks to help staff promote and manage their public engagement events. We also continue to work with WIE staff on equipment, platforms and production processes for videos and events. We also collaborate with areas of media production across the university so that we know where to point people in need of assistance.

Reflections on first year of activity

Guiding colleagues in how to manage and promote events in this new age of remote working has proved challenging due to the incredible pace that technology in this area has been updated and adopted in the last few years. It is hard to be definitive about best practice when the ground is shifting month by month. However, drawing on expertise from across the university where lots of virtual and hybrid events have been recently run, we are building up to an event of our own on 29th March 2022 in collaboration with Learning Circle 2. We intend to preach what we practice and provide useful content in the very form that we are advising on.

Plans for the year ahead

We will be leading on analysis and feedback from the March 2022 Conference hosted by Learning Circle 2 and ourselves as to what content colleagues found to be the most useful and to look to generate more (with potential closer collaboration with Learning Circle 2 on a permanent basis going forward). We will also be maintaining close relations with ITS to keep abreast of any upcoming changes to digital platforms.



Learning Circle 4: Evaluation and Assessment of Public Engagement Projects

Chair: Vishalakshi Roy, Foundation Fellow - Faculty of Arts

WIE Team Link: James Brown

Members: Sophie Staniszewska, Freya Harrison, Phil Jemmett, Florian Reiche, Claire Rocks, Becky Morris, Jack Jones, Yasmin Rahman, David Coates

Learning circle goals/ remit

- ▶ Explore the possibility of shared metrics and models for evaluation of public engagement across the university
- ▶ Identify techniques, templates, methods for evaluation for different audiences
- ▶ Explore the viability of a repository - where evaluation reports are stored and can be accessed
- ▶ Influence the culture of using evaluation evidence base to impact on future public engagement projects and activities - and personal development
- ▶ Identify and if necessary, devise training for evaluation across the university

Reflections on first year of activity

It has been interesting to identify different evaluation practices across the university through conversations with learning group members including similarities and differences across departments. The Learning Circle has also identified gaps relating to the need for sharing good practice, finding a space where staff and students can find information related to impact and learning derived from past evaluations, and access training in evaluation at the university. Overall, it's heartening to note how much the team members of this Learning Circle advocate for good evaluation practices and use of information derived from evaluation of engagement work delivered across the university.

Plans for the year ahead

In the second year of the Learning Circle, we hope to work toward meeting the objectives set out above including exploring the possibilities of learning from the work of external bodies (such as National Coordinating Centre for public engagement) and experts.



Learning Circle 5 - Supporting Public Engagement Elements of Staff Research/Teaching Funding bids

Chair: Kate Astbury, Foundation Fellow - Faculty of Arts

WIE Team Link: Naomi Kay/Michael Scott

Members: Des Hewitt, Martine Barons, Emma Griffiths, Aruni Fonseka, Ross Forman, Deepak Parashar, James Hodgkinson, Rachael Kirwan, Graeme Currie.

Learning circle goals/ remit

To work in conjunction with the WIE team to act as a 'surgery' where staff members seeking to submit research/teaching funding bids including elements of public engagement can come for advice and feedback on draft applications. It will also contribute to the development of a comprehensive guide to help staff apply for both external and internal funding for public engagement with Research projects.

Reflections on first year of activity

- ▶ we have met to revise the guide to how to get funding for public engagement
- ▶ we have offered advice on application drafts when sent to us
- ▶ we have supported the reviewing of applications to the Co-production and Collaboration fund
- ▶ we identified a need for those supporting research bids to be aware of the support Learning Circle members can provide in offering feedback on applications. As a result, we have worked with WIE Core team to set up a list of research funds with public engagement elements overseen by Research and Impact Services. Faculty Research Support Development Managers and Impact managers will going forward automatically offer to applicants the option of consulting WIE at an early stage to develop ideas and of working with the Peer Review group to review their drafts.



Learning Circle 6 - Student Training in Public Engagement

Chairs: Jack Jones (UG Student), Associate Fellow, Faculty of Social Sciences and Kevin Moffat, Honorary Fellow - Faculty of Science, Engineering and Medicine

WIE Team Link: Naomi Kay

Members: Ally Caldecote, Kate Owen, Jerry Yu, Phil Jemmett, Kayleigh Buckingham-Pegg, Florian Reiche, Felicity Boardman, Anna Tranter, Martha McGill, Paul Grigsby, Nick Barker, Celine Nithila-George, Tishtrya Mehta, Cansu Kuey, Elisabeth Blagrove.

Learning circle goals/remit

To help develop WIE Introduction to public engagement courses for UG and PhD students; as well as work with the WIE Team to develop and deliver live sessions for Student Opportunity and Skills events; contribute to WIE's IATL 'Connecting Cultures: public engagement with Research' module; as well as occasional contributions where appropriate to UG modules across the faculties.

Reflections on first year of activity

So far, we have met on three occasions to review potential support we can offer to WIE and students (undergraduate and postgraduate) across Warwick. We have agreed on our remit as a group and put into place plans for a student focus group on public engagement training, which members of the Learning Circle will provide support and advice to, informing our strategy going forward. Additionally, we fed extensively into the development of the **WIE Skills Festival**, in particular the UG and PG versions of this. We are also supporting and collaborating with other Learning Circles where appropriate, including Learning Circle 2's plans for a WIE network conference.

Plans for the year ahead

The Learning Circle will actively contribute to the work of a student focus group, which we established this year. The purpose of the group is to allow our members to hear students' views on the form our public engagement offerings should take. Once the focus group sessions have concluded, we will review the outcomes and integrate the findings into our plans going forward.

An important remit of our Learning Circle is to gather information on the public engagement support currently available to students. By creating a committee of Learning Circle members to take on this task, we hope to gain a clearer idea of where we should focus our efforts. We will also promote and publicise the public engagement initiatives that already exist within the university.

Our Learning Circle is valued for the wide range of experience and expertise of our members, and as such have been approached to provide advice and feedback on proposed projects relating to the field of public engagement and the student voice. We will continue to perform this role for anyone who seeks our support.



Learning Circle 7 - Developing a Pedagogy of Public Engagement

Chair: Kevin Moffat, Honorary Fellow - Faculty of Science, Engineering and Medicine

WIE Team Link: Rachel Edwards/ Naomi Kay (and Lisa Drummond for WIHEA)

Members: Jerry Yu, Gavin Schwartz-Leeper, Alex Baker, Anna Tranter, Martha McGill, Stefania Paredes Fuentes, Paul Grigsby, Mark Hinton, Ross Forman (WIE/WIHEA), Elisabeth Blagrove, Gioia Panzarella, Kate Astbury, Lewis Beer (WIHEA), Pierre Louis Botcherby (WIHEA), Celine Martin (WIHEA), Mairi Macintyre (WIHEA), Freeha Azmat (WIHEA), Lory Barille (WIHEA), Dani Pearson (WIHEA), Zeina Rihawi (WIHEA), Evelin Sanderson-Nichols (WIHEA), Richard Smith (WIHEA), Gill Frigerio, Bo Kelestyn, Debbi Marais

Learning circle goals/ remit

To discuss, explore and reflect on current activities in the university and to offer advice on future methodologies. This would be both in terms of immediate engagement and delivery as well as assessment practices. To consider the needs of engaging students, to consider their voice and aspirations as to the importance of PE courses, to compile the relevant modules, or components thereof, across the university. To output web based and training advice where appropriate for other staff to consider introductions into their own modules.

This Learning Circle is run jointly between WIE and WIHEA (the Warwick International Higher Education Academy).

Reflections on first year of activity

The group has now met three times since January 2021, all online. We have considered the deliveries of PE UG activities in terms of the IATL course led by the WIE Core Team alongside WIE Fellows, public engagement in Classics and Ancient History led by Paul Grigsby in Classics and Science Communication in Life Sciences led by Kevin Moffat. A compilation of over 25 modules from across the university that are or contain substantial public engagement teaching has now been compiled for us by all WIE/WIHEA members. A subgroup has also produced material for APP TE (Training course for all university staff engaged in Teaching).

Plans for the year ahead

We intend to continue to catalogue modules featuring public engagement, and work on a process for including this in the module approval process. As we gather these examples, we will also do more to examine in detail those we have already discovered and begin to understand what we can learn from them and how it can be effectively shared. Work is also underway to consider several alternative pedagogical approaches which might be of interest for those teaching engagement. We will be working to produce resources for the WIE Skills Festival which can support those looking to embed public engagement into their teaching. Live F2F training sessions are also being considered.



Learning Circle 8 - Development of Best Practices for Different Audiences

Chair: Amanda Bishop, Foundation Fellow - Faculty of Science, Engineering and Medicine

WIE Team Link: James Brown

Members: Des Hewitt, Martine Barons, Kate Owen, Helen Wheatley, Freya Harrison, Rachel Edwards, Kayleigh Buckingham-Pegg, Paul Barlow, Felicity Boardman, Ian Tuersley, Damien Homer, Amy Stickels, Anne-Marie Broomhall, Oksana Trushkevych, Aruni Fonseka, Nicholas Jackson, Jacqui Butler, Emma Langley, Jo Clark, Tishtrya Mehta, Andrew Fletcher, James Hodgkinson, Vishalakshi Roy, Paul Blagburn, Nick Barker.

Learning circle goals/ remit

To identify who we believe our 'audiences' are and how we can share best practice around these. To create a bank of support and resources that will allow people to understand the barriers, challenges and rewards of working with different audience types and to gain a greater depth of understanding about how to translate our work to these audiences.

Reflections on first year of activity

We have been able to make some brilliant progress in identifying who are audiences are and how we might start to move forward with creating some resources to enable the sharing of best practice. Within the circle there are members who have some fantastic expertise, and it is also about thinking how we can show case and utilise this. We want to look at how we create a pool of experts so that anyone wanting to work with these different audience types has a link to someone who has done this type of work. We have also been collaborating closely with other Learning Circles where appropriate.

Plans for the year ahead

We want to focus now on creating our resources, guides and possible mentoring elements of our Learning Circle. We want to think about how we can add to the WIE Skills Festival pages and use these to act as a signpost to helpful resources. We want to create an area where if you are new or wanting to try out public engagement work, you can reach out to someone who has worked with this audience before. We are going to link in closely with Learning Circles 1,2 and 3 as well to identify shared practice and ideas.



Learning Circle 9: Promotion and Impact, Outreach and Engagement Review

Chair: Sarah Richardson, Foundation Fellow - Faculty of Arts, and Ian Tuersley, Foundation Fellow - Faculty of Science, Engineering and Medicine

WIE Team Link: Michael Scott

Members: Rachel Edwards, Lisa Harding, David Lees, Maureen McLaughlin, Amy Stickels, Anne-Marie Broomhall, Stefania Paredes Fuentes, Nicholas Jackson, Deepak Parashar, Kerry Kirwan, Letizia Gramaglia, Christopher Strelluf, Naomi de la Tour, Paul Blagburn (WIE/WP), Sarah Hall (WIE/ R&IS), Jackie Hodgson, Beccy Freeman, Peter Scott, Oliver Walmsley.

Learning circle goals/ remit

To support a project commissioned by the Provost to revisit and update examples of evidence for Impact, Outreach and Engagement (IOE) cited in the university's Promotions Criteria. In turn it will also produce recommendations for expansion of the IOE banding in Promotions Criteria, and lead in due course on the development of an IOE workshop to support staff applying for promotion.

Reflections on your first year

Under the terms of its remit, the Learning Circle is not directly focused on the provision of Impact, Outreach and Engagement (IOE) activity. Rather, it provides motivation, encouragement, and support for colleagues throughout our Institution to engage with such work more effectively and to ensure that it is appropriately recognised as an essential strand to their career development and more widely, as a crucial contribution to the university's contribution to society and the regional environment.

In this regard, the achievements of the Learning Circle over the year since its establishment have been significant. The early intention to be able to provide additional advice regarding the IOE criteria for applicants to the 2021-22 promotions round required a particularly swift response to the review of practices and the development of additional guidance, examples, and other resources. Nonetheless, these aims have been met, with additions to the promotions process guidance and further clarification of the IOE criteria successfully implemented, the publishing of specific examples of such work and the running of two workshops to provide guidance and advice to this year's applicants. As a result, further goals have been developed within the Learning Circle, notably around addressing the institutional culture of IOE recognition, and the consistency with which the criteria are applied across various Departments.

Plans for the year ahead

- ▶ To prepare a repeat of the successful workshops/support in IOE for those seeking promotion in the 2022-23 promotion round.
- ▶ Evaluate the impact of the criteria for IOE for those on different contracts (Research-focused/ Teaching-focused / Research and Teaching).
- ▶ Address university/departmental culture on IOE activities.
- ▶ Look at further recognition for participation in IOE activities (awards, merit pay, study leave etc).
- ▶ Consider what role students may play in the process.

Learning Circle 10: EUTOPIA Public Engagement Strategy Development

Co-Chairs: Mike Haymes, Honorary Fellow - Strategy Group and Kerry Kirwan, Honorary Fellow - Faculty of Science, Engineering and Medicine

WIE Team Link: Michael Scott

Members: Alex Baker, Felicity Boardman, Claire Rocks, Kevin Moffat, Aruni Fonseka, Celine Nithila-George, Caroline Rushingwa, Cansu Kuey, Elisabeth Blagrove, Christopher Strelluf.

Learning circle goals/ remit

The EUTOPIA public engagement Strategy Development Learning Circle connects the work of the Institute of Engagement with the EUTOPIA alliance, a network of ten European Universities co-founded by Warwick in 2019. EUTOPIA is committed to delivering open, innovative, and inclusive higher education in Europe through the sharing of expertise and the development of new initiatives related to education, research, and innovation. The Learning Circle contributes to the development of a public engagement Strategy for EUTOPIA and supports the delivery of several initiatives related to the Institute's remit.

Reflections on first year of activity

Our Learning Circle has supported a EUTOPIA call for projects to join a 'Knowledge Bazaar,' a virtual showcase to demonstrate both the world-leading research and the innovative approaches to public engagement that take place at Warwick. We have contributed to training sessions open to participants from across the EUTOPIA alliance, including a session aimed at early career researchers on identifying different audiences for public engagement and developing strategies to overcome them, delivered with the Institute of Advanced Studies. We have also worked with colleagues from the library to develop a EUTOPIA workshop on Citizen Science and Co-Production. It has been fantastic to connect with so many colleagues at Warwick and within the wider alliance.

Plans for the year ahead

We will build on and consolidate our work so far, working with researchers to contribute to the Knowledge Bazaar, with colleagues to assess where we can contribute to additional EUTOPIA events, and with our partners to discuss our approaches to public engagement more broadly. EUTOPIA gives us the opportunity to highlight good practice at Warwick, but also to learn from what others are doing and bring that back to campus.



Learning Circle 11 - Co-Producing Research and Collaborating with Communities

Chair: Sophie Staniszewska, Foundation Fellow - Faculty of Science, Engineering and Medicine

WIE Team Link: Andrew Todd

Members: Kate Owen, Helen Wheatley, Eric Holub, Jerry Yu, Mark Knights, Paul Barlow, Ian Hands-Portman, Rebecca Morris, Damien Homer, Dave Harvey, Jacqui Butler, Emma Langley, Mark Hinton, Eleanor Hoverd, Andrew Fletcher, James Hodgkinson, Margaret Low, Naomi de la Tour, Yasmin Rahman.

Learning circle goals/ remit

The Co-production Learning Circle is interested in developing an understanding of best practice; co-production in teaching and research; having a place for knowledge and support in the field of co-production; promoting the practice of co-production across the university; identifying and celebrating the diversity of work going on in this area. We are also interested in exploring funding opportunities for co-production. We are aware of the need to develop long-term high-quality relationships with communities in a strategic way.

Reflections on first year of activity

We undertook a survey to find out what our Learning Circle members want us to focus on and this has helped us shape our remit.

We have launched the Collaboration and Co-production Fund and had two funding calls to build relationships. The fund awards up to £3,000 to support activities to build new, or strengthen existing, relationships with local, regional, and national community partners, groups, and organisations. We have awarded four awards in the first round and congratulate the successful applicants! For more information on these awards see: [Warwick - Collaboration & Co-production fund awards - 2021](#)

We have participated in the UNICA / EUTOPIA Train webinar & workshop: How to engage citizens in your research in February 2022. UNICA are the Network of Universities from the Capitals of Europe, with many universities involved also as part of Warwick's EUTOPIA alliance. Our session highlighted the work of the Institute and considered how we build strong citizen engagement in research.

Plans for the year ahead

We want to continue supporting the development of public and community partnerships. We will also undertake a review of the new Collaboration and Co-production fund, following its first two rounds of awards, to see how well it is meeting its goals and how it can be improved. We want to learn more about the range of co-production work at Warwick and show-case examples through short case studies that demonstrate the diversity of our work. We want to look for opportunities where we can work in an interdisciplinary way to strengthen our co-production activity.



Learning Circle 12: Developing an Inclusive Engagement approach

Chair: Kulbir Shergill, Honorary Fellow - Professional Services, Andy Johnson, Honorary Fellow - Professional Services

WIE Team Link: Josh Oakes

Members: Helen Wheatley, Freya Harrison, Amanda Bishop, Alex Baker, Michele Aaron, Damien Homer, Oksana Trushkevych, Stefania Paredes Fuentes, Mark Hinton, Eleanor Hoverd, Caroline Rushingwa, Tishtrya Mehta, Vishalakshi Roy, Beth Russell

Learning circle goals/ remit

Our goals are to:

- ▶ Champion the university's inclusion strategy and support its implementation in our approach to engagement
- ▶ Produce a set of guiding principles for Inclusive engagement
- ▶ Create a safer space for difficult/challenging conversations to take place that challenge assumptions, provide dilemmas, introduce case studies and work through problems.
- ▶ Highlight the value of early and equal partnerships
- ▶ Invite in external voices and support early-stage external partner inclusion into projects
- ▶ Work and collaborate with different audiences, at all levels to look at how we model inclusivity - student societies, beginners, senior staff, leaders, global partners, etc.
- ▶ Share best practice in developing inclusive partnerships and highlight areas of exclusivity
- ▶ Work collaboratively with other WIE Learning Circles

Reflections on first year of activity

Based on our goals, this year we have formed three workstreams to look at:

- ▶ Developing a set of principles for inclusive engagement
- ▶ Designing a listening framework
- ▶ Creating a repository of case studies, dilemmas, and assumptions to question

Through these workstreams:

- ▶ We have developed a set of guiding principles for inclusive practice, based on current knowledge, and have been refining these as we explore best practice further.
- ▶ We are drafting an inclusion statement for WIE for addition to our promotional media (websites, etc.).
- ▶ We have engaged with several speakers and have developed and piloted a workshop on listening skills.
- ▶ We are researching and compiling examples of case studies that demonstrate best practice, learning and solution development around Inclusive engagement.

Plans for the year ahead

Over this coming year, we will further develop our current workstreams, explore new workstream ideas for inclusive engagement practice and collaborate more widely with our other WIE Learning Circles for reciprocal knowledge transfer, learning and development.

We will be sharing our draft guiding principles and inclusion statement for wider consultation with WIE shortly and are looking to launch these more widely within the institution later this year.

We will continue to seek out more speakers to further enhance our understanding of inclusive engagement, we will be looking to roll out our Listening Skills workshop more widely and we are thinking about how to best compile good practice and learning into a repository that can be shared across WIE.



Learning Circle 13: The Future of Engagement in Higher Education

Co - Chairs: Margaret Low, Honorary Fellow - Faculty of Science, Engineering and Medicine and Naomi de la Tour, Foundation Fellow - Cross Faculty

WIE Team Link: Andrew Todd

Members: Mark Udall, Chloe Agg, Sarah Richardson, Michele Aaron, Martha McGill, Oksana Trushkevych, Jack Jones, Rachel Davis, Andrew Fletcher, James Hodgkinson, Kerry Kirwan, Susie Carr, Christopher Strelluf, Paul Blagburn.

Learning circle goals/ remit

The Learning Circle was tasked with a broad remit; to consider and influence the future of engagement at Warwick and more broadly, through policy, culture, and strategy.

Reflections on first year of activity

The Learning Circle has met four times in 2020-2021 and twice in 2021-2022 (to Feb 2022). Additionally, subgroups have met to work on specific areas. The first nine months have been focused on understanding the current landscape within Warwick and more broadly within the sector regarding institutional and national policy, existing frameworks, and drivers, as well as the current state of practice within Warwick. In addition, we have engaged with the work of the NCCPE, and conducted a survey of the IOE work of some of other HE institutions, through their KEF returns, and their public facing websites. These were then gathered and summarized in a single document. A second activity was the creation of the Quick Wins and Future Wishes document - which summarized the Learning Circle views and thoughts. Both these documents were used to produce the Initial Recommendations report in July 2021. An agreed action list was produced in November 2021, after discussions with Michael Scott and Naomi Kay from the WIE Core Team.

Plans of the LC for the future

The next phase of work is understanding what Warwick can do to become sector leading and to develop cultures, procedures, and practices to support and develop this work. This will include research and enquiries of various kinds, into the drivers and obstacles to the development of engagement at Warwick. The Learning Circle has identified key areas of activity and has formed working groups to map out next steps. Working group one is exploring the structures and strategies of Warwick and how they might support the development of the future of engagement at Warwick. Working group two is looking to understand the climate of engagement more broadly and how it might develop, including through looking at the work of other institutions and current best practice at Warwick.



Learning Circle 14: STEM Grand Challenge (STEM GC) and Public Engagement

Chairs: Rachel Edwards, WIE Associate Academic Director, and Michael Scott, WIE Academic Director

WIE Team Link: James Brown

Members: Alex Baker, Ian Tuersley, Anthony Avery, Susie Carr, Saskia Bakker, Roberta Wooldridge Smith, Ian Hands-Portman, Sophie Staniszewska, Chloe Agg, Amanda Bishop, Ally Caldecote, Martine Barons, David Coates, plus representatives from the STEM GC central team.

Learning Circles Goals/Remit:

The STEM Grand Challenge (GC) reflects the fact that STEM research and teaching are a key priority for the university. The STEM GC team identified that one essential component of transforming STEM is effective and supported public engagement, particularly outreach to encourage the next generation of scientists, and particularly a next generation from as wider range of backgrounds as possible. As such, public engagement will be an integral part of both the physical redevelopment of STEM space on the university campus, as well as a crucial part of the relaunch of its research and teaching offerings. This Learning Circle acts as the public engagement workstream for the STEM Grand Challenge project, overseeing the development of the new STEM Public Engagement Hub space, contributing to plans for its funding, and looking at how public engagement can be interlinked with STEM Research and Teaching.

Reflections on first year of activity

The LC was set up in March 2021, and rapidly got up to speed. We contributed to the STEM GC report produced at the end of 2021 and presented to Council, ensuring that one of the key vision items was to have “excellent facilities where innovation and ground-breaking scientific endeavour will flourish and be shared with the public to encourage future generations of scientists from all backgrounds”. Engaging the public will be delivered by providing

- ▶ Inclusive and inviting public atrium with visible research;
- ▶ Accessible ground floors with retail, discovery, and exhibition space;
- ▶ The STEM Public Engagement Hub (with dedicated lab and discovery spaces for school groups, community events, hands-on exhibits etc.) and a permanent home for the Warwick Institute of Engagement (WIE).

The STEM Public Engagement hub is currently planned as part of the new Education building (Phase 1a of the Science Precinct build process), scheduled for build in 2025-6. We are producing plans which will include a hands-on discovery zone where research in STEM can be highlighted; classrooms and laboratories for use by visiting school groups and for other events, and external spaces offering further opportunities for engaging the public with science. Whilst it has a STEM focus, it will be available to all departments and cross-faculty researchers to help with events.

As part of our studies, we have commissioned two reports:

- ▶ Penny Fidler was appointed to undertake research and market mapping to obtain an overview of the best UK and international engagement spaces;
- ▶ Decision House has done a demographic mapping of the hyperlocal (within 45 minutes’ walk), local (20 minutes drive / 45 minutes public transport) and regional (45 minutes drive / 75 minutes public transport) areas.

Where is this going?

In 2022 we are contributing towards more detailed planning for the STEM Public Engagement hub as the Science Precinct design moves through RIBA Stage 2, as well as contributing towards a costing model for its construction, outfit and operation. We are working with the Development Office to create an attractive fundraising prospect in the STEM Grand Challenge public engagement Hub. We are also providing support for the development of the university’s Eco-park, feeding into the exhibits that could form part of the Discovery Zone.





WIE BUILDING CAPACITY AND EXPERTISE FOR ENGAGING WITH THE PUBLIC



The Institute recognises that public engagement skills can be very different from those traditionally picked up by people working within a university, whether in an academic or professional services role, or indeed as a student. As such, we recognise that we need to be proactive in helping our staff and students develop the skills required to engage successfully with the wider public and with our communities, in order for them to then be able to make the most of the opportunities the Institute, and the wider university, provide to do so. We do this in a number of different ways as outlined below, with the Institute Core team working to develop the Institute's own coherent system of Public and Community Engagement training (the WIE Skills Festival) for staff and students (both Undergraduate and Postgraduate), as well as contributing to established staff training schemes and student skills and careers fairs.

The Institute is also dedicated to embedding public engagement as part of the taught experience of students at Warwick. We believe that thinking and discussing about public engagement, as well as learning the skills to do it effectively, are an important part of student learning in every discipline, and an important skill set to take forward into every type of career. As such, the Institute runs its own Undergraduate public engagement module through IATL (more on this below), and works closely with departments and faculties, as well as with WIHEA and ADC (Academic Development Centre), to develop public engagement teaching and assessment as part of the regular taught curriculum. The Institute also works closely with the Student Opportunity Team within the university to expand the current Undergraduate Research Scholarship Scheme (URSS) to include public engagement. As you can read about more below, this opportunity was enthusiastically taken up in 20-21 when it was piloted, with the result that, for the first time, in 21-22, students have the option of URSS projects which are entirely focused on public engagement.

A crucial part of building capacity and expertise is rewarding great practice and achievement. This is in part achieved for staff of course through the university promotions framework, with the Institute, through one of its Learning Circles, now supporting candidates

especially with their Impact, Outreach and Engagement cases for promotion. But the Institute has also moved to create a new university-wide award for both staff and students to recognise and celebrate great public and community engagement: the Warwick Award for Public and Community Engagement (WAPCE), which you can read more about below.

All our efforts to build capacity and expertise, as well as recognise skill and achievement, would be impossible without the combined expertise of our Institute Core Team and wider Fellowship through our Learning Circles. The WIE Academic Director, Associate Academic Director and Naomi Kay as Engagement Officer with responsibility for building capacity and expertise programmes, work closely with a number of Learning Circles focused on staff training, student involvement in public engagement, the Pedagogy of public engagement, as well as Promotions and public engagement, to develop best practices standards for our training and to support both staff and students across the university. And not only just within the university. Two of our Learning Circles are actively involved in the EUTOPIA network and Warwick is swiftly emerging as a leader in public and community engagement, collaboration, and co-production (better known on the continent as 'citizen science'), delivering training sessions to the entire EUTOPIA (and UNICA) European university networks on these topics.

This is a crucial part of the way in which the Institute – as a pan-university hub – not only enables the achievement of the university's 2030 Strategic goals and the delivery of real value to our international networks, but also delivers for the university's Knowledge Exchange-Concordat action plan; how we continue to ensure in the long term that we retain our strong top 10% position in the Government's Knowledge Exchange Framework; as well as how we grow our pool of researchers comfortable with public engagement as part of our future REF Impact case-study pipeline. And in terms of our students, it is an important part of how we ensure we continue to prepare students with the skills they will need for careers in the 21st century.



BUILDING STAFF CAPACITY

Since the launch of WIE in November 2020 we have delivered 11 training sessions for staff, with 180 attendees from across all faculties and professional services. Our most popular sessions have been exploring how we run events online, and two sessions on using your public engagement experience as part of your promotion case - led by our **Promotion and Impact, Outreach and Engagement Review** Learning Circle. Additionally, 14 members of staff have received free places to study an online course in **Storytelling for Research**.

Quote from an Online Engagement training attendee:

"The event was great and I think the content was up-to-date and relevant with what tools are out there currently. The whole group was engaged and I would even think about joining again after delivering outreach for refresher/self-evaluation."

We have also supported five WIE Fellows to attend the National Coordinating Centre for public engagement (NCCPE) **Engage Conference** and supported a further Fellow to undertake the NCCPE **Engage Academy** - a nine-month development programme for engagement professionals.



Quote from Dr Phil Jemmett on taking part in the Engage Academy:

"Through the Engage Academy I have met many people who aim to build a culture of public engagement across all staff in academic departments. Meeting these people and discussing the barriers, motivations, successes and failures we all have while working on engagement projects is inspiring and comforting in equal measure.

So far we have examined logic models and we are starting to look into making strategic plans for establishing a culture of engagement. One particularly useful concept has been to challenge every assumption: "do you definitely know your audience want this activity?", or that staff actually want the training session you're thinking of putting together.

Taking a far more formal approach to activities and projects will support the design, recruitment, and crucially the post-event reporting that can be so valuable to our staff who get involved with activities as this can be where the positive impacts on their careers can be materialised. I am having a really interesting and enjoyable time on this course and I am sure that by the end of it I will be in a far stronger position to nurture a culture of public engagement throughout my department and beyond."



Online Training - The WIE Skills Festival

As well as encouraging people to take part in organised training events/ courses we have also worked with our Learning Circles to produce the **WIE Skills Festival**. This interactive festival map is the home page for 19 different online resources covering everything from how to run events online, how to make a podcast, and how to make and use zines for engagement, to how to find an audience, get funding and plan your evaluation. **Between its launch in August 2021 and January 2022 the Staff Skills Festival received 654 views.**

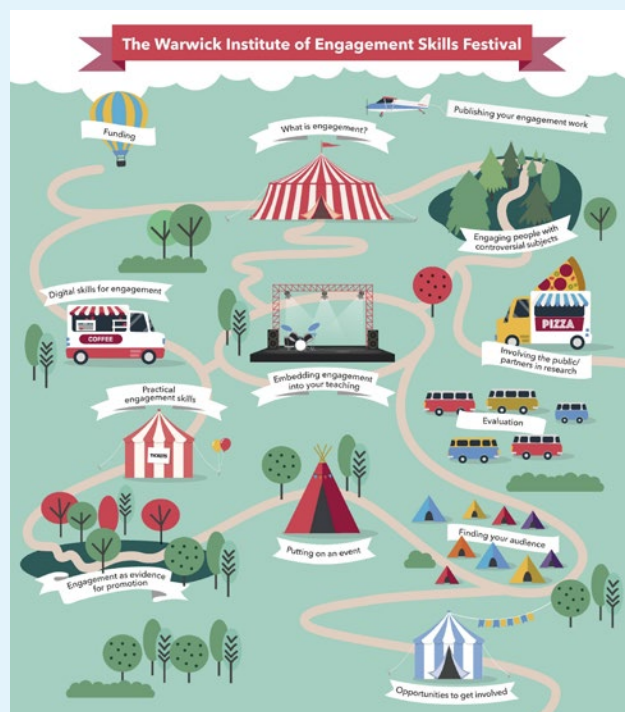
A key priority for 2022 is to continue the work to upgrade and develop new resources for the festival. We've been working with Staff Training Learning Circle (Learning Circle 1) to produce a **review process** for training materials and sessions. This process invites contributors developing training on behalf of WIE to (such as other Learning Circles) to submit a draft version to member of Learning Circle 1 who will review it and provide feedback before it's published.

Embedding Engagement into Existing Training

Alongside our own programme of event activities we've also been supporting existing professional development programmes targeted at staff. For example we delivered sessions on "Principles of Public and Community Engagement" and "Finding your Audience" (supported by colleagues from the Community Engagement Team, and the Audiences Focussed Learning Circle respectively) for the **Institute of Advanced Studies Accolade Programme** and EUTOPIA post-doctoral Fellows.

Dr Sarah Penny, Early Career Programme Manager, IAS

"Naomi Kay and members of the WIE facilitated an online staff training event in November as part of IAS's Academic Careers and Leadership Development Programme (Accolade). It was an enjoyable experience collaborating with Naomi to ensure that this event on 'public engagement: Finding Your Audience' aligned with our programme aims for the term and met the needs of our fellows. This was the first time that many contributors and participants alike used Gathertown which was a really useful learning experience for all. I thought Gathertown was a good choice of programme that provided more agency for participants, enabling a choice of rooms to enter and multiple conversations to engage with on the topic within the one virtual space. Thank you WIE for contributing to our programme!"





Another key focus for us is ensuring people are recognised for their engagement work. As such we've been looking for ways teaching staff applying for **HEA Fellowship** to map their engagement practice onto the UKPSF Framework. So far we've targeted **The Academic and Professional Pathway for Teaching Excellence (APP TE)** programme and **The Academic and Professional Pathway for Experienced Staff (APP EXP)** programme. These two routes to Fellowship work in different ways and we've tailored our approach accordingly. Working with the Pedagogy of Engagement Learning Circle we produced an activity for staff going through the APP TE Framework to work through as part of their structured learning. For APP EXP we instead chose to work with programme Mentors to highlight the potential areas engagement could feature in the UKPSF and encourage them to discuss this further with their students.

What's next for staff training?

- ▶ Continue to plan and promote a diverse training programme to all staff, ensuring this ties in with the upcoming plans for events such as the Resonate Campus Festival and Pint of Science.
- ▶ Develop more high-quality resources for the Skills Festival - rolling out our review process that ensures this is high quality and relevance to the wider context of public engagement at Warwick.
- ▶ Build pathways through the Skills Festival that result in formal certificates of recognition for those looking for a more structured online learning experience.
- ▶ Continue to grow our presence in existing development programmes, ensuring public engagement is a built in and natural part of an academic's professional development programme.
- ▶ Work with the Staff Training Learning Circle to launch an engagement focused mentoring programme for staff and students.



BUILDING STUDENT CAPACITY

Student Training

Prior to the creation of WIE there was little in the way of provision of engagement training for students so this has been a large area of development for us.

Quote from student who attended our Spring Festival of Careers session:

"It made me reflect on how my communication skills by being altered slightly could result in having a greater impact. I really enjoyed this session and hope to attend more."

Since November 2020 we've run 29 hours of training open to students. Over 17 different sessions, some exclusively designed for UG or PG students and others open to both staff and students, we've seen 265 attendees. This includes our own sessions, such as contributions to Student Opportunity's "Festival of Careers" event, and delivering 3 guest lectures for modules in psychology, humanitarian engineering, and design thinking.

Online Training - The WIE Skills Festival

We've also developed tailored versions of the WIE Skills Festival - an interactive festival map forming the home page for 19 different online resources covering everything from how to run events online, how to make a podcast, and how to make and use zines for engagement, to how to find an audience, get funding and plan your evaluation. The **PG** and **UG** versions have been adapted to only feature the areas relevant to those students, and plans for the future include tailoring the content and the examples showcased to suit these audiences specifically. Since their launch in August 2021 the UG map has had 340 views, and the PG map 178 views.

Embedding Engagement into Teaching

Our **first taught UG module, public engagement: Connecting Communities to Research**, ran for the first time in 2020 after 3 years of work to develop it by colleagues from the public engagement Team and the public engagement Steering Group which WIE has replaced. The module is interdisciplinary in nature and hosted by IATL. Working with a small group of students each year we have delivered a curriculum exploring themes such as the role of a public engagement for a university and society, the future of digital engagement methods, and a wide range of different methods of engagement. There is also a highly practical nature to the course, with students having to run and evaluate their own public engagement events, produce videos and write blogs to engage the public. 12 students took the course in 20/21 and a further 11 in 21/22.

Quote from student taking the UG public engagement module

"My overall experience on the module was very interesting and rewarding. The module allowed me to learn and enhance various skills including presentation, teamwork, blog writing, storytelling, and, of course, public engagement!"

We have also supported colleagues across the university to embed public engagement within their own programmes. As such we've seen new modules in Psychology and Classics launched this year that both heavily feature public engagement and encourage students to get involved. Our Pedagogy of Engagement Learning Circle is working to map modules that feature public engagement and develop resources that can support staff to embed engagement into their existing modules.

WIE are currently in the process of creating a Post Graduate IATL public engagement Module. This will be



available for students to study over a 4-week intensive block from Spring 2023. We're working with colleagues across various departments to embed this interdisciplinary module into their course digests, ensuring it's available to a wide range of students. Longer term plans include developing this into a stand-alone Post Graduate Award that could be taken by PGR students and staff who want to do a for credit public engagement qualification.

Working with the Student Training Learning Circle we are currently organising focus groups with UG and PG students. These will focus on understanding the student journey at Warwick and how we can embed public engagement within it. We'll also be exploring how we can best tailor resources and sessions to support students better.

Placements in WIE

This year we've hosted four placement students in the Institute. Two PhD level students from the Midlands Integrative Biosciences Training Partnership (MIBTP), and two UG students from the Psychology module "Placement, Outreach and Engagement". We've loved working closely with the students and hearing their thoughts and ideas on how we can do more to support the student population. You can read more about their experiences on our [website](#).

URSS, ICUR and Engagement

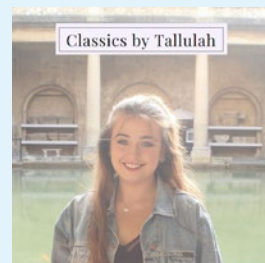
The Undergraduate Research Support Scheme (URSS) is a fantastic development opportunity for all UG students at Warwick. Students can receive a Bursary of up to £1,500 to carry out their own research project over the summer. In 2021 we were hugely pleased to support an option for students to undertake an element of public engagement as part of their URSS project. 63 students (roughly ¼ of the total number) chose to do some public engagement in the first year it launched. You can read about some of the project from 2021 on [our website](#).

We're continuing to work with the URSS team and we're really pleased that it's now a requirement for all students to undertake a public engagement element alongside their URSS project from 2022 onwards and student can also now opt to do a stand alone URSS public engagement project.

To support the call for applications we've been running sessions to support students and project supervisors to understand what public engagement is and the kind of activity they could do.

Tallulah George created the blog "Classics by Tallulah" for her URSS Engagement Project

"I travelled the country, interviewing experts at museums and ancient sites, producing Youtube and Tiktok videos as well as blogs discussing their favourite object that they think should have more attention from the public."
classicsbytallulah.co.uk



We're also working with the IATL team who organise ICUR (International Conference of Undergraduate Research). This conference takes place at Warwick each September as part of Welcome Week and is a popular forum for students to share their URSS outputs. We're adding a new element of the conference with a dedicated public engagement event. This will be an ideal forum for students who produce public engagement outputs as part of their URSS project to share them with a public audience. We've also been able to create a Student Director Role to help organise this event that will give a student the opportunity for part time paid work helping to develop public engagement activities.

What's next for student training?

- ▶ Continue to grow and develop our offer for students - informed by our planned focus groups
- ▶ Launch our PG public engagement Module
- ▶ Develop more tools and resources to help staff embed public engagement into their teaching - and ensure they're recognised for this work
- ▶ Support 100% of students to carry out public engagement alongside their URSS projects
- ▶ Develop a new public engagement event as part of ICUR



WARWICK AWARD FOR PUBLIC AND COMMUNITY ENGAGEMENT

Recognising and rewarding hard work and success is one of the most important roles of a university - and that does not only apply to its students or indeed only to their degree studies. Staff and students should feel that their efforts across the spectrum of roles they perform and projects they undertake are recognised and rewarded. This is particularly important for public and community engagement, which has historically been seen as a beneficial 'add-on' to be done in one's 'spare time.' Even with the introduction of REF Impact case-studies from 2013-4, vast swathes of public engagement activity, which would never fit in the strict template of REF impact, would often lack recognition, direction and purpose within university systems of recognition and reward. This has been addressed in recent years by a review of the university's central promotion criteria, recognising an independent category for Impact, Outreach and Engagement work, which was updated in early 2021 following a review conducted by the WIE Promotions Learning Circle (see their report above). The Learning Circle also act to ensure there is support for staff in the development of the Impact, Outreach and Engagement elements of promotion cases.

At the same time, WIE has also moved to create a new university wide award for both staff and students: the Warwick Award for Public and Community Engagement (WAPCE). This award is aligned with other established university awards like the Warwick Award for Teaching Excellence (WATE) and the Warwick Award for Personal Tutoring Excellence (WAPTE). The WAPCE awards in particular seek to recognise the vital contributions Warwick staff and students make in engaging the public - on an international and national level as well as crucially within our region and local communities - in our learning and discovery, with the goals of sharing and co-producing knowledge, strengthening the role we play in the region and showcasing the role Warwick plays nationally and internationally in making the world a better place.

Applications opened for WAPCE in January 2022, and a review panel composed of WIE Fellows and Core Team members, senior university leadership and independent external reviewers, will be reviewing applications in a two-step process leading to a series of Team, Individual Staff, UG and PG Students awards in Summer 2022. Winners will have access to a cash award, which they can spend on activities to help further improve their public and community engagement work, through training and CPD, support for developing collaborations and the organisation of public-facing events.

Prof Chris Ennew, Provost

"The launch of WAPCE is a welcome addition to the portfolio of awards for Warwick staff and students - rightly underlining the importance this university attaches to our staff and students engaging and collaborating with those outside of the university both regionally, nationally and internationally."

Prof Caroline Meyer, Pro-Vice-Chancellor for Research

"The launch of WAPCE marks an important moment in the development of our research culture and environment at Warwick, recognising the importance of collaboration and co-production in the production of our research, as well as the importance of engaging communities both near and far outside of the university in our research outcomes."





WE ARE CREATING THE RIGHT OPPORTUNITIES FOR COLLABORATION WITH THE PUBLIC



Prior to the establishment of the Institute, the university of course had a rich and varied programme of public engagement events. But with the organization of the British Science Festival (BSF) at Warwick in 2019, and the advent of Coventry as City of Culture, it became clear that there was a need to streamline and organize ‘the university’s offering’ in order that it could become more than the sum of its parts to take advantage of opportunities like BSF, and also offer a coherent commitment from the university to the City of Culture celebrations. The Institute was formed as preparations for City of Culture year were in full flow, and has developed as the natural home for the organizing team of the university’s Resonate Festival – a year-long festival dedicated to celebrating Coventry as City of Culture, which you can read more about below.

The Institute now offers a diverse annual programme of public engagement events covering a wide range of disciplines and communities of interest, hosted both digitally and in different geographical areas of our region. This is the natural ‘other side of the coin’ of our building capacity and expertise work: to give those staff and students who have developed their skills sets in public and community engagement a great set of opportunities to discuss, collaborate and co-produce ideas and research with a wide variety of publics. Some of these opportunities are hosted in collaboration with particular faculties and research projects (like our annual Festival of Social Sciences) or as part of national campaigns (like Pint of Science). Others are more local to our region (like this year’s City of Culture celebrations) and others are particular to the university of Warwick (see projects we have funded below).

The Institute seeks both to organize a programme of events, which staff and students can contribute to, as well as financially support individuals and groups throughout the university to develop their own projects. In the past year we have funded projects in conjunction with the Connecting Cultures GRP, as well as funding community groups directly to work with partners inside the university. And we have been delighted to launch our own Collaboration and Co-Production fund to support the development of new relationships (as well as the strengthening of existing ones) between university staff and community groups, with the

express aim of helping them develop co-produced research grant applications and public engagement activities (read more about all of this on the following pages).

Going forward post City of Culture year, the Institute has a clear strategy for developing its programme of public events each year, which will ensure that we continue to develop relationships with community partners we have worked with in the past; develop new relationships with geographical communities and communities of interest in collaboration with other 2030 Strategic goal teams (e.g. Regional and Community Engagement, Innovation and Inclusion); as well as speak out on the national stage as part of a series of university priority debates and topics (e.g. Sustainability).

As such the Institute is not only enabling wider discussion and debate about crucial topics within our region and more widely, but working to permanently lower the ‘invisible force field’ between the university and its communities by hosting public events both on campus and in our region and by supporting ongoing collaboration between our staff and community groups. In so doing, not only is the Institute enabling the university’s 2030 strategic goals, but also playing a crucial part in ensuring the university has a proactive role in its region and within important national debates.



PROMOTING COLLABORATION

Building Community Partnerships

In the three years after being announced as the UK City of Culture, Warwick researchers carried out more than **60 new research projects** related to City of Culture - working in diverse ways and settings with a wide range of organisations, artists and communities. Alongside the City of Culture Trust's aims and objectives, Warwick has always been committed to creatively engaging with people across the local region with the aim of improving the social and economic prosperity of the city, to contribute to Coventry's Cultural Strategy, and to improve health and reduce inequalities.

As we approached the start of 2021, placed yet again in a UK-wide lockdown, WIE was focussed on developing our public programme of events and activity for City of Culture: the **Resonate Festival**. As part of this process, we developed a 'Theory of Change' - outlining the Impacts and Outcomes that we wanted to achieve. Central to this were the following guiding principles:

- ▶ The people of Coventry positively influence and shape the city they want to live in
- ▶ Community led production and programming increases cultural participation and activism
- ▶ Our programme reflects, represents, and involves the people of the city

The importance of co-creation of events and activities with diverse groups from across the city led WIE to announce a new funding stream to support Coventry based organisations. The funding helps these organisations to work with Warwick to put on cultural events during 2021 and 2022. Unlike previous collaborative funding calls, all the funding went directly to the partner organisation, thereby shifting the power dynamics that are usually in place with civic-university partnership working. By providing a more direct access to the money, we believe that community groups were able to spend the funds

where it will make the biggest difference to them, support their work and provide the foundations for a longer-lasting sustainable relationship with Warwick.

In 2021, as part of our Community Partnerships Fund, we were able to provide £10,000 to support community partnership building with a range of organisations from across Coventry. The 10 recipients of this funding have been able to develop activity contributing to Coventry UK City of Culture and to work with Warwick staff and students.

The projects carried out by these community partners are listed below:

- ▶ **United Nations Association Coventry Branch** - developing a project focussing on issues of mental health and wellbeing in Coventry's Muslim community and working with Warwick staff and students to develop workshops and an exhibition.
- ▶ **Coventry Restorative Justice Forum** - an event on restorative justice and the launch of the Coventry Stories, an online listening project.
- ▶ **Coventry Lord Mayor's Committee for Peace and Reconciliation (LMPC)** - a project focusing on Diversity, Identity and Peace engaging young people from Coventry College, Hereward College, Coventry Refugee and Migrant Centre and students from adult education. Participants will engage in four workshops on 'What Peace Means to Me'
- ▶ **The Coventry Society** - the 'Coventry Grotesques' project - creative workshops and walking trails exploring Coventry's heritage and culture with Warwick staff and students, Coventry Society members and local citizens.
- ▶ **Open Theatre Company** - Developing the River City Detectives programme: working with local heritage organisations, and a group of young people with learning difficulties from special schools to explore Coventry's rivers, canals and waterways.



- ▶ **Together in Action Trust** - A Festival of Sacred Music at Warwick Arts Centre with Coventry artist Mandip Singh Seehra. The event will bring together different faiths within Coventry to share the music/voice of their communities and collectively tell the story of music in our city and celebrate the rich tapestry of sounds around us.
- ▶ **Howes Primary School** (in partnership with the Lord Mayor's Peace Community and Sense) - developing sensory elements for the Coventry Peace Trail to support those with sensory impairments.
- ▶ **The Highlife Centre** - Unity Through Sports, part of the 'This is Africa 2021' events programme
- ▶ **Medieval Coventry charity** - "Celebrations and Communities" event showcasing festival occasions in Coventry and their legacy from the 15th to the 17th centuries and their legacy. The event covers subjects including street drama (e.g. mystery plays and Corpus Christi processions), early Godiva processions,

royal entries to the city, community festivals, links with Shakespeare and the guildhall.

- ▶ **FRIDAYS COVENTRY** - developing mentoring with Warwick staff and students, support for their electric Go-Kart project and implement a new collaborative awards scheme for their members.

Friday's Youth group - part of our Invention programme led by the IMFM GRP

"At Fridays we're really excited to be working with Warwick Racing and the wider university of Warwick team on the exciting Fridays Go Karting Project. Electric battery technology is the future and providing those skills for young people in this area is crucial. Thank you, university of Warwick, for your support."



Further funding opportunities in collaboration with Connecting Cultures GRP

In addition to our Community Partnerships Fund, we were also able to work with the university's Connecting Cultures GRP to fund a series of projects working with the regional creative sector and grass-roots organizations. The following six projects were able to integrate academic research with creative practitioners to present work through a different lens, both with and for new audiences.

Alan Chalmers	Professor, WMG	Showcasing Coventry's medieval weaving within Coventry's City of Culture Built Environment exhibition	A high-fidelity virtual reconstruction of medieval weaving in Upper Spon Street, Coventry in 1540 is created including weaving reenactors captured in 3D. The resulting animation formed an important part of Coventry City of Culture Built Environment exhibition at Metropolis.
Jo Trowsdale	Associate Professor, Sociology	Art-making: Coventry's past, present and future	This project gathered the views of the city's people, sharing them at CoC21 events at the Daimler Powerhouse Creation centre opening.
Karen Simecek	Associate Professor, Philosophy	Re-voicing words: Embodying voices through poetry	Designing and delivering a series of workshops for the poetry community focusing on voice, embodiment and performance space for its potential to empower those who have been unjustly marginalized in society. Was part of the Words and Voices Roadshow in Sept 2021.
Louise Campbell	Emeritus Professor, History of Art	Modern Mercia: Post-war art and design in Coventry and Warwickshire, 1945-70 exhibition at Leamington Spa Art Gallery & Museum	Modern Mercia: Post-war art and design in Coventry and Warwickshire 1945-1970 is an exhibition showcasing paintings, sculpture, architectural designs and homeware owned by LSAG&M, Coventry Cathedral, the Herbert Art Gallery & Museum, Warwick university's Art Collection and private collectors. This project pools expertise in order to create an exhibition examining post-war art and design in a regional (rather than national) context. It lends a valuable historical dimension to the City of Culture's programme and provides a model for cooperation between different cultural organisations in the region.
Margaret Low	Professor, WMG	Stitch in Time and Place	An ongoing project which connects groups of young people in different parts of the world, to create designs through coding and stitching, to explore aspects of their own cultural heritage. Photographs of the final pieces of work will be exhibited as part of the Resonate Campus Festival. Turtlestitch is freely available software that enables the generation and stitching of patterns using a digital embroidery machine, giving programmatic control of the machine.
Meleisa Ono-George	Associate Professor, History	Coventry's Windrush Stories	Using digital storytelling technique, this project worked with community participants in the curation and telling of their own 'Windrush Stories'. This project used a community-engaged approach and centred the authority of members of the Windrush generation in the telling of their own experiences and histories.





Collaboration and Co-Production Fund 2021-2

One of the most important - and growing - areas of public and community engagement is co-production: the involvement of members of the public, community groups and those with specialist expertise in the development of research questions and goals, the application for funding and the conduct of the research itself, as well as of course the communication of research outcomes. In this, the public, interested groups and specialists become not the receivers of knowledge but participants in the generation of it from the outset of the process and are empowered to be co-producers of new understanding. This has in the past been a more common approach for particular areas of research, particularly in Warwick Medical School, but has now grown dramatically to become a growing template for research across all Faculties, encouraged in part by the Government's Knowledge Exchange agenda and the wider European call for the increase in what it terms 'citizen science.' WIE has been responding on this wider European stage through its EUTOPIA Learning Circle (see the report above) and by delivering training through the EUTOPIA and UNICA networks on Co-Production/ Citizen

Science. But it has also moved to address a particular gap in the support for such approaches: namely the very start of the process. How do academics initially develop the relationships with key community groups, organisations and specialists that can lead to the creation of joint research ideas and projects, which can then be developed into full co-produced research grant applications, especially when most grant funders in this area expect those relationships to already exist?

WIE's Collaboration and Co-Production Fund was thus developed in collaboration between the WIE Core team and WIE's Collaboration and Co-Production Learning Circle to fill this gap of early relationship building. It launched in September 2021 to provide seed-funding for the development of new relationships and/or the strengthening of relationships recently created, with community groups and individuals at the regional and national level. Applications to the fund are reviewed by a panel of WIE Fellows and paid external independent assessors.





We have two calls a year for funding of up to £3000 per project and our first call closed in November 2021, leading to four projects being awarded funding. These projects will be monitored over the next 3 years so that we can gain real insight into how these relationships develop and how this fund helps to improve co-production initiatives.

Dr Karen Simecek, Associate Professor, Department of Philosophy & Dr Andrew Cooper, Assistant Professor, Department of Philosophy. Karen and Andrew will arrange a poetry performance evening at both local youth centres **Fridays** and **Coventry Boys and Girls club** with students at Warwick who write poetry.

This will strengthen the relationship with the two partner organisations to support a successful programme. It will also improve dissemination of research and improve wider engagement with youth workers and youth organisations in Coventry and beyond.

Dr Vishalakshi Roy Assistant Professor, Cultural & Media Policy

Vishalakshi is bringing together a one-day symposium on 15 February 2021 in partnership with Warwick Art Centre to explore inclusion and to show that by investing in people with different and intersectional vantage points and perspectives, one can drive new thinking and innovation in the cultural and heritage sectors.

The symposium will include up to 100 attendees including able bodied and disabled creative practitioners, leaders of local cultural venues, academics working in cultural work and leadership and funders such as **Arts Council England** and **Coventry City Council**. The symposium will include provocations and learning unearthed from the evaluation study for **ADVantage**.

Dr Paul Grigsby, Research Fellow in Outreach and Impact in the Department of Classics and Ancient History.

Paul will work in partnership with **Warwickshire Museum's** Market Hall Museum to showcase two Roman coin hoards and bring out their multi-layered stories to the public. The aim will be to create a new exhibition, published research, and form the base and model for future collaborative public-facing research projects. Teaching resources will be created for local schools including the creation of "lessons in a box" based on actual artefacts found on display at the Warwickshire Museums.

Prof Thijs Van Rens is Professor of Economics and academic co-lead of the university's Global Research Priority on Food. In partnership with **Oyinlola Oyebode, Associate Professor at WMS**, they aim to develop a "mobile healthy food market" that will serve neighbourhoods in Coventry where access to healthy food is low. The van will also be used as a platform for "field experiments", to better understand the barriers to healthy diets with the aim of informing similar local interventions elsewhere, as well as national policy.



PUBLIC ENGAGEMENT EVENTS ORGANISED BY WIE

ESRC Festival of Social Sciences 2020

The ESRC Festival of Social Science was held as a digital, online only event from 7th-15th November 2020. As this was a new venture for the festival organisers, those Universities with an Impact Accelerator Account grouped together to share some of the administrative burden. This included shared training in online engagement, a shared website and common evaluation questionnaires.

We were able to host

- ▶ 16 Live online Events
- ▶ 5 pre-recorded videos
- ▶ 2 Podcasts
- ▶ 1 Audio play
- ▶ 1 Digital Art Exhibition
- ▶ 1 Online art installation
- ▶ 1 online school workshop

Bespoke Training in online engagement

All event organisers were offered the opportunity to attend a 3-hour workshop on online engagement run by external consultant Jamie Gallagher. We had six event leads take us up on the opportunity. All reported that they had found it useful, both from a technical point of view and also conceptually in terms of deciding their event format.

Audience Totals

Registered	Watched Live	Watched within one week	Website hits (across duration of festival)	Twitter engagement (@warwickengages)
747	425	2784	1,713	27 tweets / 30 retweets / 89 likes / 75 link clicks

Running events online gives a greater opportunity to re-imagine the format of how we present materials. The 2020 festival showcased some good examples of this including:

- ▶ Mapping Women's Suffrage hosted a kick-off event at the start of the week to introduce the project. They then released new resources and content every day of the week online before hosting a live 'closing event' to present the work and answer audience questions.
- ▶ 'Cracking' launched their audio play at the start of the week giving the audience time to listen before hosting a live Q&A later in the week.
- ▶ i:DNA online had an intro video and asked for pre-submitted questions for a live event later in the week
- ▶ 'Deprescribing medicines' ran an interactive event including quizzes and breakout rooms for small group conversations
- ▶ 'Looking through other eyes' ran an interactive word cloud throughout the event
- ▶ 'Global challenges...' had speakers from 5+ different countries around the world.



Resonate Festival 2021-2022

To celebrate Coventry's year as UK City of Culture, the university of Warwick – a principal partner of City of Culture – is hosting The Resonate Festival. We are bringing a 12-month programme of inspiring and interactive free events to Coventry and Warwickshire for all ages to spark ideas, curiosity and creativity, with a grand finale of a multi-day live festival on campus in April 2022. The entire programme and festival is linked with the themes and timings of the City of Culture year, and our events form part of the City of Culture's event programme. It's our most ambitious set of public engagement projects ever delivered in the city.

- ▶ May: INVENTION – Sounding it out: Building a better future together
- ▶ June: SANCTUARY – Safe and sound: We are a city that is open and welcoming
- ▶ July: COMMUNITY – Share the same voice: The power of working together
- ▶ August: FREEDOM – Speak your truth: Freedom of ideas, speech and expression
- ▶ September: WORDS AND VOICES – The power of words spoken, written and sung
- ▶ October: FUTURES – Sounds of the future: We imagine the Coventry of tomorrow
- ▶ November: COVENTRY IN THE WORLD – A global symphony: Diverse cultures coming together
- ▶ December: FEAST! Food for the soul: Together around the table
- ▶ January: BEING HUMAN – Anthem of humanity: Understanding what it means to be human
- ▶ February: HEALTH – Mind and body in harmony: The journey towards better health and mental wellbeing
- ▶ March: AMAZING WOMEN – Sing her praises: Celebrating all women – past, present and future
- ▶ April: FESTIVAL!

Headline Figures

Since the Resonate Festival launched in May 2021, **we have organised 94 events. We've engaged with 3152 people face-to-face and 5627 people online; the ethnic diversity of our attendees roughly reflects that of the**

city of Coventry. We've built relationships with over 62 local organisations and worked with about 120 staff and 60 students from all three faculties on developing and delivering our programme. We've also launched a new website (<https://www.resonatefestival.co.uk/>) and developed around 50 online activities and resources so that people can engage with the festival at home, something which has been particularly important during this difficult year of restrictions and lockdowns. These figures are important as they show that we're on track to achieve much of what we set out to achieve, but they are only part of the story of Resonate.

Quote from Yanal Armanazi, a participant on the Re/Making Home events led by Prof Vicki Squire

"It's my pleasure to be involved in any work with you. Many thanks for giving me this opportunity. The event was amazing, it worked very well. Special thanks to Vicki, her message made me feel proud of myself!"

Our theory of change – what we set out to achieve....

Based on the City of Culture Trust theory of change and work carried out by the Monitoring and Evaluation team here at Warwick (led by Professor Jonothan Neelands), we produced a theory of change to map out the impacts, outcomes and outputs that we are aiming for through the Resonate Festival.

The Impacts we're aiming for via the Resonate festival:

- ▶ Warwick is recognised & embedded as a valued contributor to Coventry lives and a legacy of engagement is established
- ▶ Warwick is recognised as a leader in civic engagement
- ▶ Warwick is recognised for research that changes lives locally, nationally, globally
- ▶ Culture is valued as essential part of staff & student experience



Quote from Shahnaz Akhter, Research Fellow, Politics and International Studies:

"Thanks so much and for providing some of my favourite moments of the year. They seem like magical moments of togetherness and learning and I hope we can have some more of them next year!"

Outputs: the kind of programme we wanted to put together:

- ▶ Programme, planning and production of activities co-created with Coventry communities
- ▶ A programme which includes all levels of Warwick staff, students and alumni as well as local partners
- ▶ Events and activities which showcase publicly engaged research and provide opportunities for two-way dialogue
- ▶ New and existing partnerships allowing Warwick to contribute academic expertise and cutting-edge research to cultural activity
- ▶ Warwick activities at a series of city-wide events including activities in the community (predominantly Canley and Foleshill)
- ▶ A range of cultural events targeted at under-represented groups (including staff), through co-curation, to increase participation
- ▶ Arts and cultural events which enable engagement with research on economic, environmental, social and health and wellbeing topics
- ▶ Exceptional cultural experiences, events and activities on Warwick Campus
- ▶ Events or activities which inspire national conversations on the things that matter...

Audience member at our Words and Voices event held at Assembly Festival Gardens in September.

"To see part of my culture celebrated that is often overlooked was amazing - and people (older Asian women) have a moment in the spotlight!"



In summary:

The real achievements of the festival so far are found in the new partnerships we've forged across the city, reaching new communities and working with new people in and around Coventry. Through collaboration with local charities and organisations, artists and their networks, business leaders and local businesses, and others, we have made connections across the city. We are making sure that Warwick is recognised and embedded as a valued contributor to Coventry lives and we remain committed to establishing new ways of working and securing lasting relationships that will deliver a legacy of engagement in our region and beyond. We've learned, through the process of putting on the Resonate Festival, new ways to convey, interpret, challenge and co-produce research with our neighbours here in the city and the region, and have engaged and enthused people with the work being undertaken by colleagues across campus. We still have some more work to do to convince more of our student body that engaging with cultural activities can be an important part of their lives here at Warwick, though we've been delighted with the wide participation of Warwick staff in the festival. We'd also like to 'widen our net' in the community (only a quarter of our attendees hadn't attended a university of Warwick event before, and we'd like that number to be a bit higher). **37% of our attendees commented in feedback that Resonate events have improved how they feel about living in Coventry and over two thirds of our attendees feel more positive about the university and the impact that our work has on society as a result of attending Resonate.** These are important impacts for the university.



Month	Live Events	Tickets Booked	Live Attendees	Post event online views*	Key Partners
May - Invention	15	1003	990	1486	Foleshill Creates, Herbert, Highly Sprung, Pint of Science, Fridays
June - Sanctuary	17	506	226	835	Coventry Welcomes, Belgrade Theatre, Central England Law School, Ephemeral Theatre Company
July - Community	3	250	110	N/A	Flatpack Film Festival, Coventry Cathedral, Leamington Spa Art Gallery
August - Freedom	8	260	250	N/A	Flatpack, Coventry university, The Tin Arts and Music Venue
September - Words and Voices	5	85	1154**	N/A	Flatpack, Coventry Cathedral, Assembly Festival Gardens, Theatre Absolute, Lunt Fort, ORT Gallery, CARAG, Imagineer
October - Futures	7	167	132	N/A	City Hosts, Goldsmith's university, Warwick Arts Centre, FarGo Village
November - Coventry in the World	38	1006	235	1199	ESRC Festival of Social Sciences, Warwick Arts Centre, Jane Austen Museum, Screening Rights Film Festival
December - Feast!	1 (+ 2 postponed to Spring)	45	55	2107	City of Culture Trust, Tales from Coventry Tables, Shopfront Theatre, Berkswell Parish Council, Coventry BID, local restaurants sector
Totals	94	3322	3152	5627	

*After 30 days (or less if 30 days haven't elapsed at time of writing)

**Includes attendance at Canley workshops in preceding months leading up to the Carnival

[View the full report on the first 6 months of the Resonate Festival here](#)

Attendee at 2Tone: *Lives and Legacies - Rock Against Racism*

"We are lucky to have someone locally with the vision and the skills to put on events like these...It was great to be reminded of old times and great to discover details I never knew, but the most vital part...is...that these are not purely historical movements of archive and nostalgic interest but live and ongoing ones and to help raise awareness among younger music lovers..."



Coming soon in April 2022: the Resonate Campus Festival

Over 50 individual events and many more drop-in activities, games and experiences - something for all the family to enjoy.

Bringing Coventry's tenure as UK City of Culture towards its conclusion and celebrating a full 12 months of roadshows, Resonate 2022 is a three-day extravaganza on the university of Warwick campus between 19-21 April.

Revisiting many of the projects, partners and associations which have developed over the year, Resonate 2022 showcases the best of Warwick research from staff and students based in each of the university's faculties alongside a whole host of regional and national partners,

collaborators, performers, artists, community groups, and special guests.

Across three evenings, discover a varied programme encompassing the arts, sciences and humanities; performances, talks and public conversations, exhibitions, film screenings, walking tours, activities and so much more, generating a diverse festival for the creative and the curious across all our local communities.

Wednesday 20th April is a full day of events and activities for the whole family, with arts, crafts, games, experiences and some very special guests.

Celebrating and exploring ideas that resonate - the festival is open to all and free!



PLANS FOR THE FUTURE

The Institute has managed to accomplish a huge amount in its first year and a bit of operation. That is testament to the incredible hard work of the Institute core team, the enthusiasm and effort of our Fellows, the commitment and energy of our community partners, as well as of course the support and encouragement of the wider university and particularly its senior leadership.

We are committed to building on these strong foundations going forward. As we publish this our first annual report, we are welcoming our new cohort of Fellows and bringing the entire Institute family together for the first time in the same room to celebrate our achievements so far. We are also reviewing applications for the 2nd round of our new Collaboration and Co-Production Fund; beginning our journey of supporting students who have been successful in their 2021-2 URSS public engagement project applications; reviewing the 1st stage of applicants for our new Warwick Award for Public and Community Engagement; as well as making final preparations for welcoming circa 5000 people to campus as part of our Resonate Campus Festival event at the end of April 2022.

We are also full of plans for new initiatives in the near future. In March our new Associate Director, Dr Kerry Baker, will begin with us full time and will lead on developing the Institute's events programme for 22-23 and beyond. The Institute has also recently been successful in securing further Higher Education Innovation Funding (HEIF) to develop new initiatives particularly aimed at encouraging students to participate in public and community engagement projects and develop their associate skill sets, for which we will be recruiting a new Engagement Officer to join the team. Alongside this, we are delighted that Prof Helen Wheatley, who has directed the Resonate Festival, will join the Institute core team to champion our Regional Relationships, and that we

will also be able to bring into the team additional event organisation support to develop a programme of events focused on Health and Wellbeing over the next two years.

As we continue to roll out our Skills Festival and Training programme for staff and students, we are also busy developing a new post-graduate taught module in public engagement to be delivered through IATL, which will be an interdisciplinary module linked in the first instance to a variety of Departmental PG offerings, including Warwick Manufacturing Group. We are also delighted to be collaborating with the Liberal Arts Department and School of Cross-Faculty Studies in the development of a new Masters course in Community Engagement. At the same time, now that the world is once again opening up, we hope to bring forward a new International public engagement Visiting Fellowship scheme to bring inspirational public engagers from across the globe to Warwick to take part in events and share their expertise. Additionally, we also hope to develop short-term Institute Fellowships for those in our region with whom we collaborate so that they can benefit from access to the university's knowledge-base and continue, as a result, to embed the university in our community and our region.

We are also of course working to support the development of the STEM Grand Challenge public engagement hub through RIBA Stage 2, alongside developing its financing and fundraising case, and also taking up a new role in supporting the development of the Discovery Zone in the university's new Eco-Park project. At the same time, we are developing new ways to 'plug-in' to all the university's different Faculties to support their public engagement activities, programmes and nascent Grand Challenges.

We look forward to the challenge, and most importantly, to working collaboratively with you all.



WIE FELLOWSHIP

Faculty of Arts

Fellow Name	Role	Job Title	Department	Date appointed
Celine Nithila-George	Associate Fellow	Undergraduate Student	Liberal Arts	01/02/2021
David Lees	Associate Fellow	Associate Professor, French (SMLC)	SMLC	01/02/2021
Gavin Schwartz Leeper	Associate Fellow	Senior Teaching Fellow	Liberal Arts	01/02/2021
Gioia Panzarella	Associate Fellow	Teaching Fellow	GSD	01/02/2021
Jacqui Butler	Associate Fellow	M/Phil/PhD Candidate, Classics & Ancient History	Classics	01/02/2021
Mark Knights	Associate Fellow	Professor	History	01/02/2021
Paul Grigsby	Associate Fellow	Research Fellow	Classics	01/02/2021
Ross Forman	Associate Fellow	Associate Professor	English	01/02/2021
Georgia- May Brown	Fellow	Undergraduate student	Classics & Ancient History	01/03/2022
James Poskett	Fellow	Associate Professor in the History of Science	History	01/03/2022
Katie Tipple	Fellow	Undergraduate Student	Classics & Ancient History	01/03/2022
Luke Degun	Fellow	Undergraduate Student	Classics & Ancient History	01/03/2022
Mark Scott	Fellow	PhD Candidate - Theatre and Performance Studies	SCAPVC - Theatre and Performance Studies	01/03/2022
Rhianna Pike	Fellow	Undergraduate Student	Classics & Ancient History	01/03/2022
Zhiyan Guo	Fellow	Associate Professor (Chinese subject leader)	School of Modern Languages and Cultures	01/03/2022
Damien Homer	Foundation Fellow	Widening Participation Faculty Coordinator - Arts	Outreach/ WP	01/02/2021
James Hodkinson	Foundation Fellow	Reader	SMLC	01/02/2021



Faculty of Arts (continued)

Kate Astbury	Foundation Fellow	Head of School of Modern Languages and Cultures	SMLC	01/02/2021
Martha McGill	Foundation Fellow	British Academy Postdoctoral Fellow	History	01/02/2021
Michele Aaron	Foundation Fellow	Reader	Film and TV	01/02/2021
Sarah Richardson	Foundation Fellow	Professor of British History	History	01/02/2021
Vish Roy	Foundation Fellow	Assistant Professor	Centre for Media, Culture and Policy Studies	01/02/2021
David Coates	Honorary Fellow	Curator	Faculty of Arts	01/02/2021
David Morley	Honorary Fellow	Professor	Warwick Writing Programme	01/02/2021
Gemma Wright	Honorary Fellow	Head of Creative Learning	Warwick Arts Centre	01/03/2022
Penny Roberts	Honorary Fellow	Head of Faculty of Arts	Faculty of Arts	01/02/2021
Sarah Shalgosky	Honorary Fellow	Curator	Warwick Arts Centre	01/03/2022

Faculty of Science, Engineering and Medicine

Fellow Name	Role	Job Title	Department	Date appointed
Aruni Fonseka	Associate Fellow	Research Fellow	Physics	01/02/2021
Dave Harvey	Associate Fellow	Senior Teaching Fellow in Marketing	WMG	01/02/2021
Deepak Parashar	Associate Fellow	Associate Professor in Systems Biology & Oncology	WMS	01/02/2021
Eleanor Hoverd	Associate Fellow	NIHR Pre-doctoral Clinical Academic Fellow	WMS	01/02/2021
Eric Holub	Associate Fellow	Professor of Translational Genetics	Life Sciences	01/02/2021



Faculty of Science, Engineering and Medicine (continued)

Freya Harrison	Associate Fellow	Associate Professor	Life Sciences	01/02/2021
Katy Angliss	Associate Fellow	Assistant Professor	Warwick Manufacturing Group	01/03/2022
Lazaros Andronis	Associate Fellow	Reader in Health Economics	Warwick Medical School	01/03/2022
Mark Williams	Associate Fellow	Professor	WMG	01/02/2021
Minhyong Kim	Associate Fellow	Zeeman Professor	Maths	01/02/2021
Oksana Trushkevych	Associate Fellow	Senior Research Fellow	Physics	01/02/2021
Rejmana Fardosh-Aki	Associate Fellow	Undergraduate Student	Life Sciences	01/03/2022
Saskia Bakker	Associate Fellow	Manager	Advanced Bioimaging	01/02/2021
Shirley Struzaker	Associate Fellow	Marketing & Communications Manager	WMG/WMS	01/03/2022
Tishtrya Mehta	Associate Fellow	PhD Student	Physics	01/02/2021
Yasmin Rahman	Associate Fellow	Undergraduate Student	WMS	01/02/2021
Gala Dalgety	Fellow	PhD student, RLT member, Lab demonstrator	Physics	01/03/2022
Penny Kechagioglou	Fellow	CCIO, dep CMO, Oncologist, Trustee, DBA candidate	Cancer services	01/03/2022
Rohin Titmarsh	Fellow	Lead Engineer	Warwick Manufacturing Group	01/03/2022
Saba Alhagagi	Fellow	Undergraduate Student	Life Sciences	01/03/2022
Trudy Spencer	Fellow	Associate Professor, Head of Work-based Education	Warwick Manufacturing Group	01/03/2022
Alex Baker	Foundation Fellow	PhD Chemist	Chemistry	01/02/2021
Ally Caldecote	Foundation Fellow	Outreach in Physics	Physics	01/02/2021
Amanda Bishop	Foundation Fellow	WP Fac Co-ordinator	SEM	01/02/2021
Anne-Marie Broomhall	Foundation Fellow	Senior Research Fellow	Physics	01/02/2021
Cansu Kuey	Foundation Fellow	PhD Candidate	Life Sciences	01/02/2021



Faculty of Science, Engineering and Medicine (continued)

Chloe Agg	Foundation Fellow	Senior Lecturer	Engineering	01/02/2021
Claire Rocks	Foundation Fellow	Associate Professor/ Outreach Lead	Computer Science	01/02/2021
Elisabeth Balgrove	Foundation Fellow	Senior Teaching Fellow	Psychology	01/02/2021
Felicity Boardman	Foundation Fellow	Professor	WMS	01/02/2021
Ian Hands-Portman	Foundation Fellow	Imaging Manager	Life Sciences	01/02/2021
Ian Tuersley	Foundation Fellow	Professor	WMG	01/02/2021
Jerry Yu	Foundation Fellow	Undergraduate Student (Biochemistry)	Life Sciences	01/02/2021
Phil Jemmett	Foundation Fellow	Project Officer (Outreach)	WMG	01/02/2021
Sophie Staniszewska	Foundation Fellow	Professor of Public Involvement and Engagement	WMS	01/02/2021
Caroline Meyer	Honorary Fellow	Head of Faculty of Science, Engineering and Medicine	Faculty of Science, Engineering and Medicine	01/02/2021
Don Pollacco	Honorary Fellow	Professor of Astrophysics	Physics	01/02/2021
Kate Owen	Honorary Fellow	Director of Medical Studies	WMS	01/02/2021
Kerry Kirwan	Honorary Fellow	DPVC Knowledge Exchange	WMG	01/02/2021
Kevin Moffat	Honorary Fellow	Professor/ Director of Life Sciences Outreach	Life Sciences	01/02/2021
Lawrence Young	Honorary Fellow	Professor of Molecular Oncology	WMS	01/02/2021
Lisa Harding	Honorary Fellow	Head of Communications and Marketing	WMG	01/02/2021
Lorenzo Frigerio	Honorary Fellow	Vice Provost/ Chair	Life Sciences	01/02/2021
Margaret Low	Honorary Fellow	Director of Outreach & Widening Participation	WMG	01/02/2021
Martine Barons	Honorary Fellow	Director of Applied Statistics and Risk Unit	Applied Statistics	01/02/2021



Faculty of Science, Engineering and Medicine (continued)

Rebecca Freeman	Honorary Fellow	Dean of Students	Life Sciences	01/02/2021
-----------------	-----------------	------------------	---------------	------------

Faculty of Social Sciences

Fellow Name	Role	Job Title	Department	Date appointed
Amy Stickels	Associate Fellow	Course Director/ Senior Teaching Fellow	Warwick Foundation Studies	01/02/2021
Anna Tranter	Associate Fellow	Teaching Fellow	Warwick Foundation Studies	01/02/2021
Christopher Strelluf	Associate Fellow	Assistant Professor	Applied Linguistics	01/02/2021
Emil Kostadinov	Associate Fellow	Teaching Fellow	Economics	01/03/2022
Jack Jones	Associate Fellow	Undergraduate Student	Politics	01/02/2021
Massimiliano Lacertosa	Associate Fellow	Teaching Fellow	Philosophy	01/03/2022
Stefania Paredes Fuentes	Associate Fellow	Associate Professor	Economics	01/02/2021
Angharad Butler-Rees	Fellow	Research Fellow	Sociology	01/03/2022
Jane Bryan	Fellow	Reader	School of Law	01/03/2022
Laura Lammasniemi	Fellow	Associate Professor	School of Law	01/03/2022
Nalita James	Fellow	Associate Professor/ Director of Academic Studies	Centre for Lifelong Learning	01/03/2022
Shahnaz Akhter	Fellow	Research Fellow	Politics	01/03/2022
Tom Perry	Fellow	Assistant Professor	Education Studies	01/03/2022
Des Hewitt	Foundation Fellow	Head of Primary and Early Years' Teacher Education	Centre for Teacher Education	01/02/2021
Emma Langley	Foundation Fellow	Assistant Professor	Centre for Educational Development, Appraisal & Research	01/02/2021
Florian Reiche	Foundation Fellow	Senior Teaching Fellow	PAIS	01/02/2021



Faculty of Social Sciences (continued)

Mark Hinton	Foundation Fellow	Community Engagement Development Manager	Centre for Lifelong Learning	01/02/2021
Nicholas Jackson	Foundation Fellow	Senior Teaching Fellow	Maths/ Economics	01/02/2021
Rebecca Morris	Foundation Fellow	Assistant Professor	Education Studies	01/02/2021
Anil Awesti	Honorary Fellow	Assistant Professor, Chair of Warwick Race Equality Task Force	Centre for Lifelong Learning	01/03/2022
Graeme Currie	Honorary Fellow	Professor of Public Management	WBS	01/02/2021
Jackie Hodgson	Honorary Fellow	DPVC Research	Law	01/02/2021
Jonothan Neelands	Honorary Fellow	DPVC / WBS	WBS	01/02/2021
Nick Vaughan-Williams	Honorary Fellow	Professor	Politics & International Studies	01/02/2021
Nigel Driffield	Honorary Fellow	Professor	WBS	01/03/2022

Professional Services

Fellow Name	Role	Job Title	Department	Date appointed
Caroline Rushingwa	Associate Fellow	Recruitment Lead, Africa	Student Recruitment Office	01/02/2021
Emma Griffiths	Associate Fellow	Trusts and Foundations Manager	Development	01/02/2021
Katie Anderson	Associate Fellow	Marketing Director, Warwick Arts Centre	Warwick Arts Centre	01/03/2022
Kayleigh Buckingham-Pegg	Associate Fellow	Student Recruitment Officer	Student Recruitment Office	01/02/2021
Susan Louise Carr	Associate Fellow	Senior Development Manager	Development	01/02/2021
Beth Russell	Fellow	Graduate Management Trainee	university Executive Office	01/03/2022



Professional Services (continued)

Giulia Boggiano	Fellow	Development Executive	Development & Alumni Engagement	01/03/2022
Parmjit Dhugga	Fellow	Warwick Core Skills Award Manager	Student Opportunity, Education Directorate	01/03/2022
Anthony Avery	Foundation Fellow	Senior Production Manager	Warwick Events	01/02/2021
Debbie Smith	Foundation Fellow	Development Officer	Warwick Enterprise	01/02/2021
Jo Clark	Foundation Fellow	Senior Donor Relations Officer	Development	01/02/2021
Mark Udall	Foundation Fellow	Design Manager, Warwick Print	Warwick Print	01/02/2021
Nicholas Barker	Foundation Fellow	Schools Outreach Fellow in Residence	Strategy/ Chemistry	01/02/2021
Andy Johnson	Honorary Fellow	Social Inclusion Manager	Strategy Group	01/01/2022
Charlotte Ridley	Honorary Fellow	Director of Brand and Marketing	Chief Communications Officer's Group	01/03/2022
Dan Derricott	Honorary Fellow	Director of Education Policy and Quality	Education Policy and quality	01/03/2022
David Plumb	Honorary Fellow	Director	Innovation group	01/02/2022
James Alexander	Honorary Fellow	Digital Strategy and Transformation Director	Digital Strategy	01/02/2021
Jane Furze	Honorary Fellow	Director of MCI	Engagement Group	01/03/2022
Kulbir Shergill	Honorary Fellow	Director of Social Inclusion	Strategy Group	01/02/2021
Mike Haymes	Honorary Fellow	International Partnerships Manager	Strategy	01/02/2021
Paul Barlow	Honorary Fellow	Manager of Warwick Volunteers	Warwick Volunteers	01/02/2021
Paul Blagburn	Honorary Fellow	Head of WP/ Outreach	WP/ Outreach	01/02/2021
Rachel Sandby-Thomas	Honorary Fellow	Registrar	Strategy	01/03/2022



Professional Services (continued)

Roberta Wooldridge Smith	Honorary Fellow	Director of Student Opportunity	Student Opportunity	01/02/2021
Sam Roseveare	Honorary Fellow	Head of Government Affairs	Engagement Group	01/03/2022
Sarah Hall	Honorary Fellow	Head of R&IS	R&IS	01/02/2021

Cross Faculty

Fellow Name	Role	Job Title	Department	Date appointed
Tom Goodman	Fellow	Postdoctoral Researcher	Warwick Manufacturing Group	01/03/2022
Kerry Dobbins	Fellow	Senior Teaching Fellow	Academic Development Centre	01/03/2022
Andrew Fletcher	Foundation Fellow	Programme Manager, Warwick Arts Centre	Warwick Arts Centre	01/02/2021
Rachael Kirwan	Foundation Fellow	Administrator (Global Research Priorities)	Life Sciences	01/02/2021
Naomi de la Tour	Foundation Fellow	Academic	IATL	01/02/2021
Doreen Foster	Honorary Fellow	Director	Warwick Arts Centre	01/02/2021
Gwen van der Velden	Honorary Fellow	Deputy Pro Vice Chancellor (Student Learning Experience) and Academic Director, Warwick International Higher Education Academy	WIHEA	01/02/2021
Jonny Heron	Honorary Fellow	IATL Director	IATL	01/02/2021
Leti Gramaglia	Honorary Fellow	Principal Fellow	WIHEA	01/02/2021
Peter Scott	Honorary Fellow	Director of the Warwick Institute of Advanced Study	IAS	01/02/2021







Contact Information
University of Warwick
Coventry, CV4 8UW

wie@warwick.ac.uk
warwick.ac.uk/wie

WARWICK
INSTITUTE OF
ENGAGEMENT