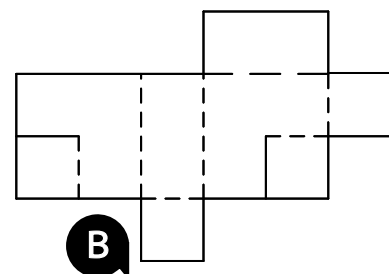
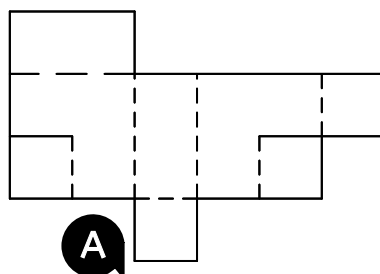
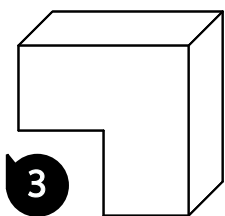
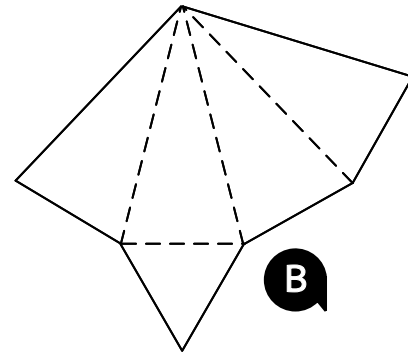
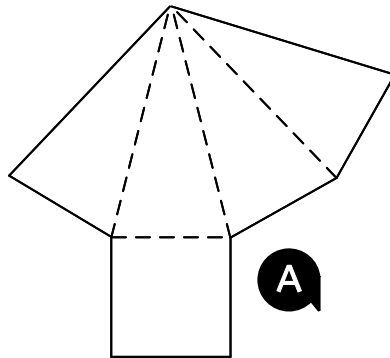
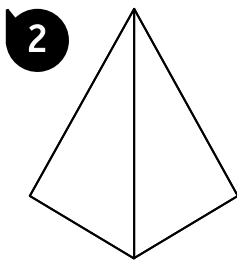
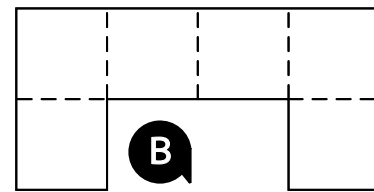
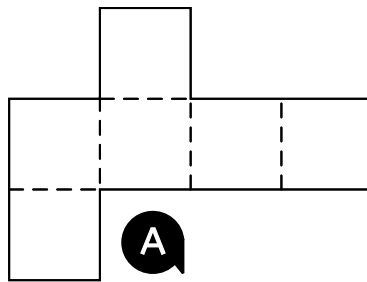
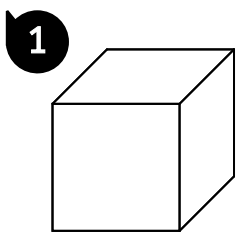


3 Paper Engineering

Engineers and designers often use a computer programme, or paper and pencil, to create solutions to problems we have, but some of these ideas are actually 3D (three-dimensions) solutions instead of 2D (two-dimensions) as they are on paper or a screen.

YOUR CHALLENGE: For each of the 3D shapes below, can you work out which of the 2D designs would make it, if you were to cut and fold as instructed?

Cut Line —————
Fold Line - - - - -



Margaret works in WMG and designs hands-on activities that make it easier to see how technology and engineering shape the world around us, from the things we use to the systems we rely on.

Margaret's work helps people to build confidence, inspire creative thinking, and show that engineering is something everyone can explore and enjoy, as well as helping people to appreciate how important it is and how much it contributes to our everyday lives